

## GRAFLITE Version 1.0

May 1, 1995

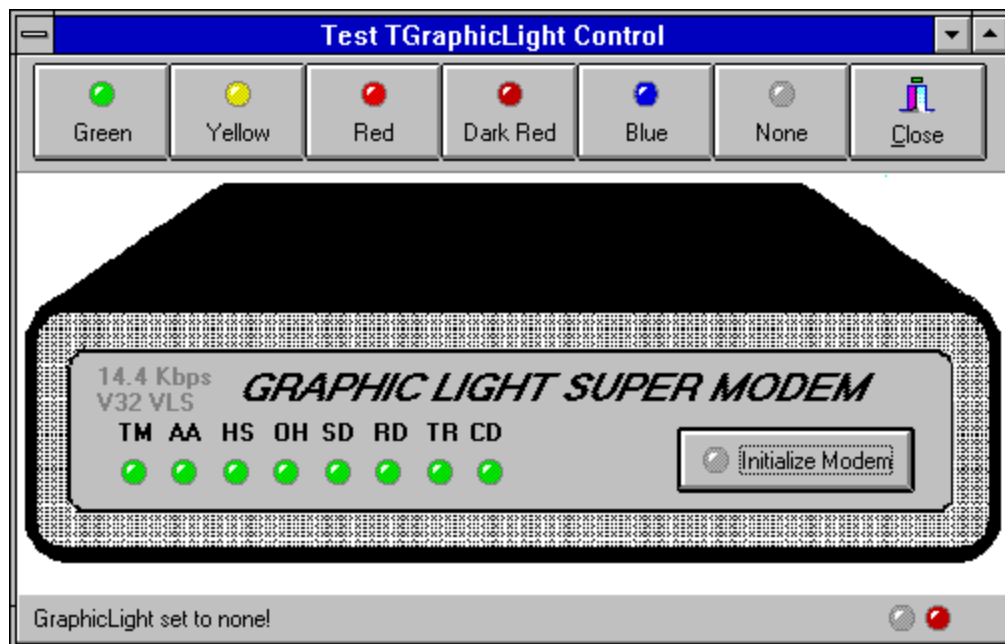
### What is GrafLight

GrafLite is a Delphi component that serves as a graphic light indicator to provide feed back to the operator of a Delphi program. GrafLight is a descendent of a TImage component. The color of a GrafLight may be set at design time or at runtime.

Two GrafLites on a statusbar. The first has an alNone ActiveLight property, the second has an alDarkRed ActiveLight property.



Use of GrafLight in a statusbar is about the same as using the hourglass cursor to let end users know that they should wait is the light is red, to proceed with caution if the light is yellow, or to proceed if the graflight is red.



Other uses of GrafLight could include displaying modem-like lights on a status line for programs that use modem communications components. The GrafLites in the above form are the modem indicator lights and the two lights on the statusbar. Run the Testlite demo program to see how the lights work.

### Properties - at design time

GrafLight has the same image component properties with one simple additional property... ActiveLight.

The ActiveLight component can be set to the following in the Object Inspector Dialog at design time:

alNone - gray or inactive light  
alGreen - green or go active light  
alYellow - yellow or use caution light  
alRed - red or complete or warning light  
alBlue - blue active light  
alDarkRed - a dark red light

The graflight component may be sized to any size at design time, but it looks the best at about 24 pixels square or smaller. The actual picture size is 17x17 pixels.

The graflight may be place on a panel or statusline or on a form.

#### Using Graflight - at run time

---

The color of a graflight component may be changed at run time by setting the graflight components ActiveLight property to any of the following:

alNone - gray or inactive light  
alGreen - green or go active light  
alYellow - yellow or use caution light  
alRed - red or complete or warning light  
alBlue - blue active light  
alDarkRed - a dark red light

#### Installing GrafLight in the Delphi Component Library

---

GrafLight may be installed into the Delphi Component Library by:

1. Selecting Options\Install Components.
2. Select GRAFLIGHT.PAS

After GRAFLIGHT has been installed it may be used just like any other Delphi component.

#### GrafLight Registration

---

The source code is included in the shareware release. The source code may not be modified without permission of the author.

GrafLight may be used free of charge in any non-commercial programs. GRAFLIGHT is (c) 1995 copyright by Adirondack Software & Graphics

The author may be contacted on Compuserve Mail 70530,2166.

#### **WARNING**

---

Although Graflight functions flawlessly on my computer systems the

author assumes no responsibility for the use or misuse of the component  
or source code.

Released June 11, 1995.  
Enjoy!