

# Morphile 1.6

## Quick Start Guide

---

Morphile and the Morphile Quick Start Guide are Copyright ©2000, Software Perspectives. All Rights Reserved Worldwide. Unauthorized duplication and/or distribution of this software is a violation of applicable copyright laws.

### SOFTWARE WARRANTY

This software is provided "AS IS" and without warranty of any kind and Software Perspectives and Software Perspectives's licensor(s) EXPRESSLY DISCLAIM ALL WARRANTIES AND/OR CONDITIONS, EXPRESS OR IMPLIED, INCLUDING, BUT NOT LIMITED TO, THE IMPLIED WARRANTIES AND/OR CONDITIONS OF MERCHANTABILITY OR SATISFACTORY QUALITY AND FITNESS FOR A PARTICULAR PURPOSE AND NONINFRINGEMENT OF THIRD PARTY RIGHTS. Software Perspectives DOES NOT WARRANT THAT THE FUNCTIONS CONTAINED IN THE SOFTWARE WILL MEET YOUR REQUIREMENTS, OR THAT THE OPERATION OF THE SOFTWARE WILL BE UNINTERRUPTED OR ERROR-FREE, OR THAT DEFECTS IN THE SOFTWARE WILL BE CORRECTED. FURTHERMORE, DOES NOT WARRANT OR MAKE ANY REPRESENTATIONS REGARDING THE USE OR THE RESULTS OF THE USE OF THE SOFTWARE OR RELATED DOCUMENTATION IN TERMS OF THEIR CORRECTNESS, ACCURACY, RELIABILITY, OR OTHERWISE. NO ORAL OR WRITTEN INFORMATION OR ADVICE GIVEN BY OR AN Software Perspectives AUTHORIZED REPRESENTATIVE SHALL CREATE A WARRANTY OR IN ANY WAY INCREASE THE SCOPE OF THIS WARRANTY. SHOULD THE SOFTWARE PROVE DEFECTIVE, YOU (AND NOT Software Perspectives OR AN Software Perspectives AUTHORIZED REPRESENTATIVE) ASSUME THE ENTIRE COST OF ALL NECESSARY SERVICING, REPAIR OR CORRECTION. SOME JURISDICTIONS DO NOT ALLOW THE EXCLUSION OF IMPLIED WARRANTIES, SO THE ABOVE EXCLUSION MAY NOT APPLY TO YOU. THE TERMS OF THIS DISCLAIMER DO NOT AFFECT OR PREJUDICE THE STATUTORY RIGHTS OF A CONSUMER ACQUIRING Software Perspectives PRODUCTS OTHERWISE THAN IN THE COURSE OF A BUSINESS.

# 1 Welcome to Morphile

---

Welcome to Morphile 1.6! Morphile is a powerful, yet simple, program that allows you to take foreign files and turn them into something your Macintosh can possibly use. It is also useful for editing files which have lost their creator and type codes. Included in the software's capabilities is a text conversion feature which can remove unwanted control characters from UNIX or Windows ASCII Text files.

This quick start guide will guide you with a typical setup and configuration of the software, outlining the various features available to you. Please note that some features may be unavailable if Morphile is being run in Demo mode.

## What's New in Version 1.6?

Morphile 1.6 adds more flexibility than ever before. Here's what we've added:

- A new popup menu containing Application Presets.
- A new Favorite creator/type setting, to make it even faster to convert files.
- Improved user interface.
- Compatibility with Mac OS 9.
- Faster and more efficient processing of 50 or more files.

## Requirements

- 68030-68040 equipped Macintosh
- or-
- PowerPC equipped Macintosh (ie. Power Macintosh)
- Mac OS 8.0 or later, including Mac OS 9.

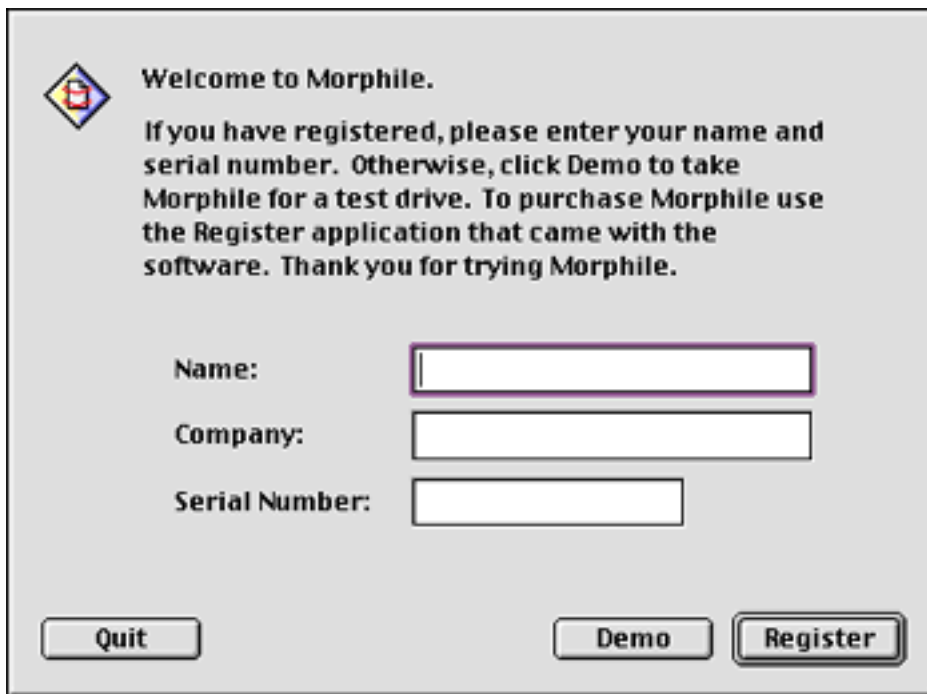
## Let's Get Started 2

---

Now it's time to walk through your first launch of Morphile and then we'll take you through a typical session with the software.

When you run Morphile for the first time, the software has not been serialized yet. The software will ask you to enter your registration information, which includes a product serial number. This serial number is usually e-mailed to you when you purchase the software. If you purchased the software and do not have your serial number handy, please refer to the Support chapter at the end of this guide for assistance.

The first thing you will see, when running a non-registered version of Morphile is the Registration window (figure 1). If you have a product serial number, enter the requested information in the window's fields.

The image shows a registration window for Morphile. It has a light gray background and a black border. In the top-left corner is a small icon of a diamond with a red 'E' inside. To the right of the icon, the text reads: "Welcome to Morphile. If you have registered, please enter your name and serial number. Otherwise, click Demo to take Morphile for a test drive. To purchase Morphile use the Register application that came with the software. Thank you for trying Morphile." Below this text are three input fields: "Name:", "Company:", and "Serial Number:". Each label is followed by a white rectangular text box with a thin black border. At the bottom of the window are three buttons: "Quit", "Demo", and "Register". The "Quit" button is on the left, and the "Demo" and "Register" buttons are on the right, with "Demo" to the left of "Register".

**Welcome to Morphile.**

If you have registered, please enter your name and serial number. Otherwise, click Demo to take Morphile for a test drive. To purchase Morphile use the Register application that came with the software. Thank you for trying Morphile.

Name:

Company:

Serial Number:

**Figure 1 - Morphile Registration Window**

Once you have entered your registration information, click the Register button. If you get an error indicating your serial number is incorrect, try entering it again, making sure to enter it exactly as it was sent to you. If you continue to have problems, please refer to the Support chapter.

## A Typical Session

Now that you have registered Morphile, the program will start up.

Let's begin by looking at Morphile's Preferences window. Using your mouse, choose **Preferences** from the **File** menu. The **Morphile Preferences** window (figure 2) will open.

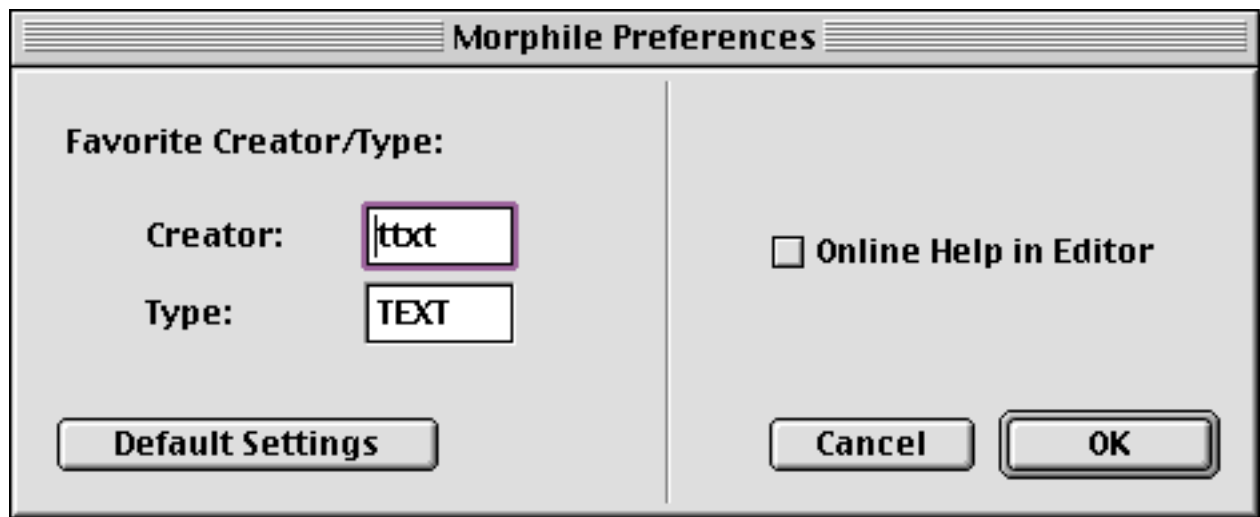


Figure 2 - Morphile Preferences Window

The Morphile Preferences window is very simple and contains only two preferences: your Favorite creator/type and whether or not to display help in Morphile's editor window. Your favorite creator/type is a set of two, four digit, codes which represent an application and its document.

On the Macintosh, all files, applications, folders, etc. have a unique identifier code which tells the operating system what kind of file it is. In the case of applications, the type code would be 'APPL'. The creator of an application is determined by the company or individual who wrote the application. Any files that may be created by the application would have a creator code identical to the application. For example, the Preferences file created by Morphile has a creator of 'µR00'. If you look at the Morphile application itself, you will see it also has a creator of 'µR00'. This means the Preferences file is kind of like a "child" of the Morphile application. Similarly, files created by SimpleText will have a creator of 'ttxx' and depending on the kind of document, it will have a type of 'TEXT' or 'PICT' or any other type of file that SimpleText is capable of reading. However, assigning a type of '8BIM' to a SimpleText document will result in the Mac OS asking you who the file belongs to, because it knows that SimpleText does not have the ability to create that kind of document.

Click Cancel and let's take a look at the rest of the program.

Let's start by opening a file. Choose **Open...** from the **File** menu. Locate the file, "Sample File", which is located in the Tutorial folder (see figure 3), and open it.

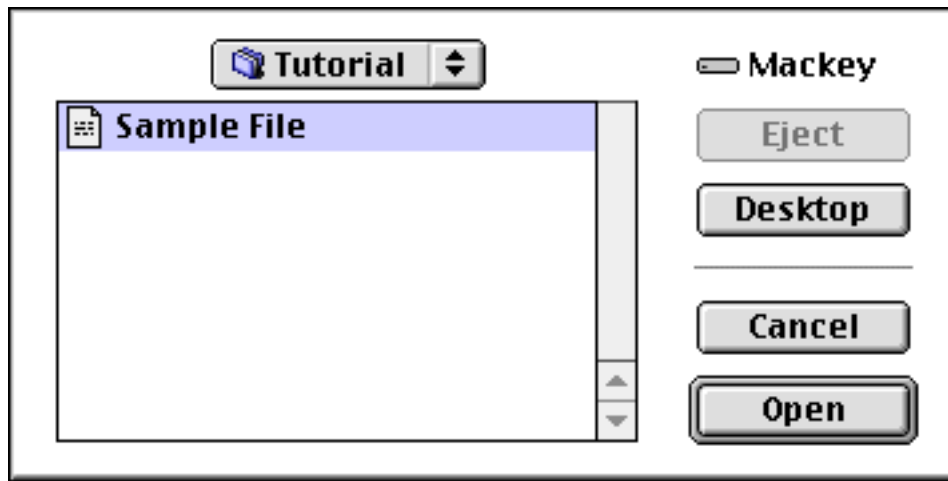


Figure 3 - Sample File in Tutorial Folder

As soon as you click Open, the main Morphile Editor window will appear (figure 4).

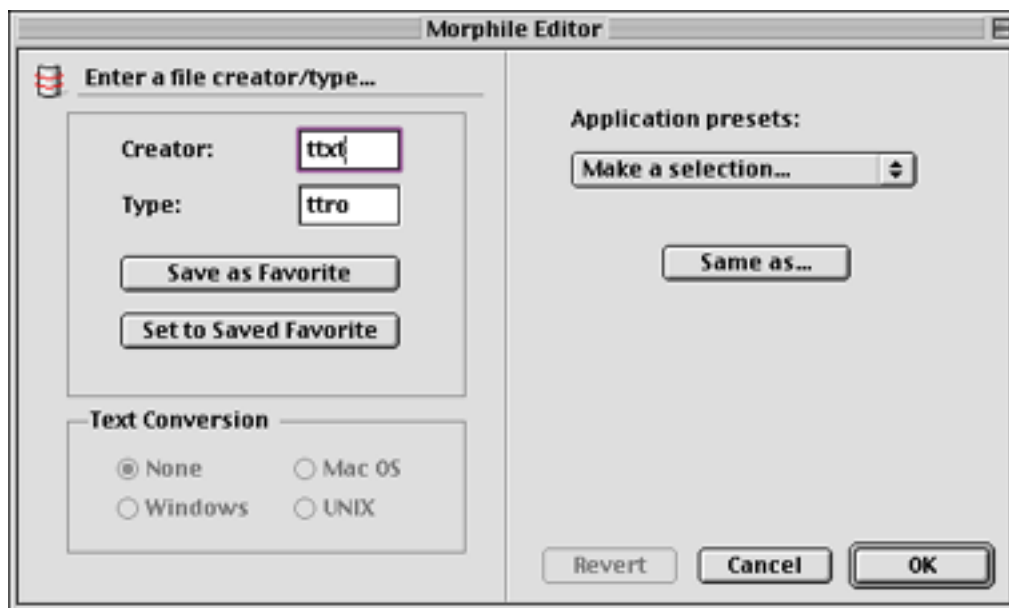
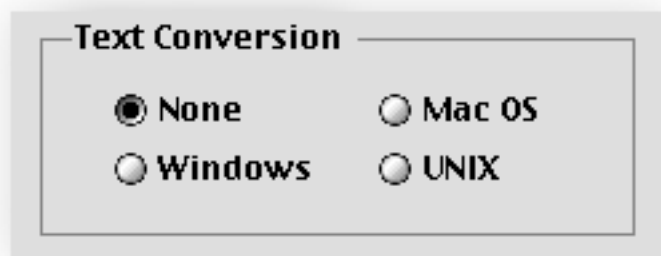


Figure 3 - Morphile Editor Window

It is in this window that all the magic happens. At the top left side of the window, you see two fields. The creator field contains the creator code for the file you just opened.

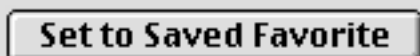
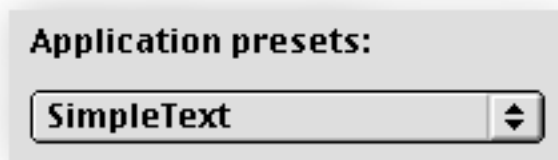
We'll look at the window in depth on the next page.

Now let's take a detailed look at the other components of the Morphile Editor window.



Below the two fields are a series of radio buttons. These buttons control the Text Conversion feature. They are only available when the file or files you have opened with Morphile are of the type 'TEXT'. Each of these radio buttons will place the correct control characters into a file respective to the one selected.

Across from the Creator and Type fields is a popup menu which provides a quick and easy way to set the creator and type of a file or group of files. You can select one of the items in the popup and the proper creator and type code is automatically entered for you. Then all you have to do is click OK and you're done.



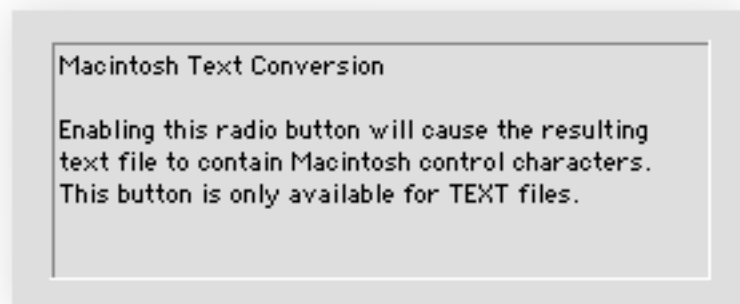
the same way that the Application Presets popup provides quick access to a number of application types, you can use the "Save as Favorite" button to make a single creator and type a Favorite. You can then recall this Favorite at any time by clicking on the "Set to Saved Favorite" button, which will automatically insert your Favorite creator and type into the Creator and Type fields.

Sometimes you may not know what the creator and/or type codes are for a given application. In that case, you will want to rely on the "Same as..." button. Clicking "Same as..." will bring up an Open File dialog. All you need to do is find a file that is the kind you want the current file or files being edited to be. Open that file and the creator and type codes will be read in and entered into the Creator and Type fields automatically.



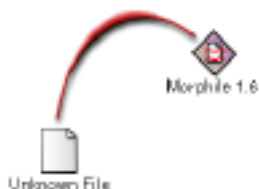
If you ever choose from one of the automatic entry options (ie. Application presets popup, Set to Favorite, or Same as, and you don't want what you get you can always go back to the original creator and type for the file or files being edited by clicking the "Revert" button. This will revert ALL settings to their original values.

And if you ever need help, just hover over any of these controls and help will appear in the Help Text box.



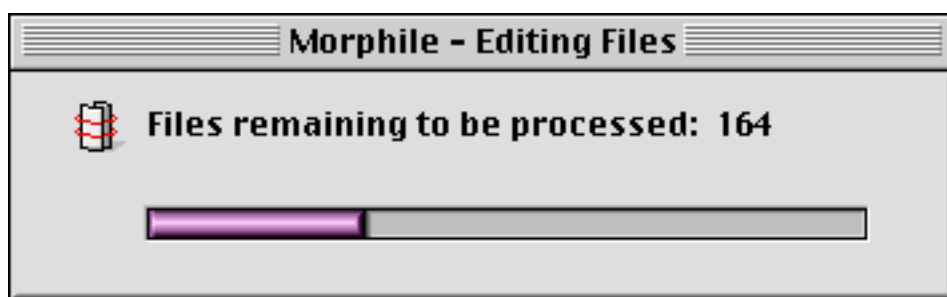
And that is a quick run through all of the features of Morphile.

Additionally, here are a couple of quick tips and troubleshooting help for using Morphile more effectively.



## Drag and Drop

You can drag and drop one, two, fifty, a hundred or more files onto Morphile. If you drag more than twenty files, the software will automatically display a progress window after you click the OK button when editing the files. This is to help show that Morphile is busy working on the files. You may, however, notice a small delay afterward as the Finder makes the adjustment to the file icons. This is normal.



## Q&A

If you ever run into a problem using Morphile, try some of these frequently asked questions first. If the situation you are encountering is not here, please refer to the Support chapter.

**Q: When I try to drag and drop a file or files to Morphile, it won't allow me to do it.**

**A: Sometimes it is necessary to rebuild your desktop in order for Morphile to work. Restart your computer and wait until the last of the extensions icons has appeared at the bottom of your screen, then quickly hold down Command-Option. The Command key is the one with the Apple logo on it, right next to the Option key.**

**Q: I can't find my serial number, where is it?**

**A: If you purchased Morphile, the serial number will usually be e-mailed to you (if you purchased it through Kagi or Beyond.com). If you still can't find it, please refer to the Support chapter.**

**Q: I can't drag and drop my folder, filled with my files, to Morphile?**

**A: Morphile does not presently support the ability to accept a folder for file editing. We do plan to address this in a future version.**

# Support 3

---

Now that you have purchased the Morphile software, there may come a time when you need assistance with it. This chapter contains some useful information on who to contact for help and information on where to go for updates.

## Help!

If you ever run into a situation where you're not sure what to do, or you are having a problem with Morphile, our support team is ready to assist. You can get help in several ways. The first thing to do is to visit our web site and consult our online support forum. There you will find a Frequently Asked Questions listing and access to software updates. You can contact our support staff directly in two ways. The first, and speedier, method is via e-mail. The second is via our toll free phone number.

**Technical Support Web Page:** Go to <http://www.sperspect.com>, then click on Support.

**Technical Support E-Mail:** [techsupport@sperspect.com](mailto:techsupport@sperspect.com)

**Technical Support Phone:** 1 (877) 591-6086

## Morphile Updates

Updates to Morphile are usually free to all Morphile 1.x customers. You can check our web site for the latest news and information regarding Morphile.

**Software Perspectives Web Site:** <http://www.sperspect.com>

Updates are available by clicking Support and then clicking the link in Step 3: Updates.