



Description of Extractlcon

The program **Extractlcon** is intended for scanning the directories and extracting icons from files of various types.

The program Extractlcon has the following features:

- Scanning is carried out both in the directories and in subdirectories.
- Scanning files is possible both on the given extension and all files in succession. The extensions of files can be combined.
- Saving extracted icons in formats ICO and BMP. At saving an icon the name of a file is saved automatically.
- Converting files ICO into BMP format.
- Viewing through extracted icons is possible in modes LargeIcon and List.
- Copying found icons into the clipboard and subsequent insert into any program.
- Display of the selected directory and masks of search on the main screen.
- The number of found icons is shown.
- While choosing any found icon in the status line, the path, and the name of a file from which it was extracted are displayed, besides, the icon is drawn in a special window.
- Possibility to choose the screen color of extracted icons.
- All the changes you make are saved and restored with the next program starting.

See also:

[Copyright](#)
[Registration](#)



Copyright

ExtractIcon,

Copyright (c) 2000, DuskLine, Inc.

Author:

DuskLine, Inc.

E-mail:

info@duskline.com

WebSite:

<http://www.duskline.com/>

See also:

[Registration](#)

[License Agreement](#)



Registration

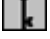
Extractlcon is not freeware.

You may install this program to test and evaluate for **15 days**; after that time you MUST either BUY the license for the use of this program or delete the program from your computer hard drive.

Current prices and payment methods may be found at <http://www.duskline.com/>. You may also send a message with your request sales@duskline.com.

After purchasing a license for Extractlcon, an E-mail message with a registration key and registration file will be sent to your E-mail address. You should enter this key in the line of input:



and press the "Register" button. If the entered code is correct, after some time the button  will disappear from the panel of the main menu and you will be able work with registered Extractlcon. All the questions about registration of the program send to E-Mail: support@duskline.com.

All future versions for registered users - with the discount!

See also:

[License Agreement](#)



License Agreement

SOFTWARE LICENSE AGREEMENT

Extractlcon

LICENSE:

- **Extractlcon** is not freeware. You may install this program to test and evaluate for 15 days; after that time you MUST either BUY the license for the use of this program or delete the program from your computer hard drive.
- Once registered, the user is granted a non-exclusive license to use **Extractlcon** on one computer at a time for any legal purpose. The registered **Extractlcon** software may not be rented or leased, but may be permanently transferred, if the person receiving it agrees to terms of this license.
- You may not alter this software in any way, including changing help and text files.
- **Extractlcon** IS DISTRIBUTED "AS IS". NO WARRANTY OF ANY KIND IS EXPRESSED OR IMPLIED. YOU USE IT AT YOUR OWN RISK. **DuskLine, INC.** WILL NOT BE LIABLE FOR DATA LOSS, DAMAGES, LOSS OF PROFITS OR ANY OTHER KIND OF LOSS WHILE USING OR MISUSING THIS SOFTWARE.
- You are hereby licensed to make as many copies of the shareware version of this software and documentation as you wish; give exact copies of the original shareware version to anyone; and distribute the shareware version of the software and documentation in its unmodified form via means. There is no charge for any of the above.
- All copyrights to **Extractlcon** are exclusively owned by **DuskLine, Inc.**
- Installing and using **Extractlcon** signifies acceptance of these terms and conditions of the license. If you do not agree with the terms of this license you must remove **Extractlcon** files from your storage devices and cease to use the product.

Copyright (c) 2000, DuskLine, Inc., All rights reserved.

Internet: <http://www.duskline.com/>

E-mail: info@duskline.com



Introduction

The program consists of two parts: converting files ICO into format BMP (first part) and scanning files for extraction of icons (second part).

These two buttons concern the first part of the program:

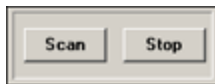


- Look for details [Main menu](#).

All the other settings concern the second part of the program:



- **"Select Dir"**. The button of choosing the directory, where scanning and extracting of icons will be carried out. If there is a tick opposite **"Search in SubDirectories"** search will be made also in subdirectories.



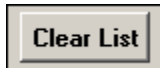
- **"Scan/Stop"**. Buttons to begin scanning and stop.



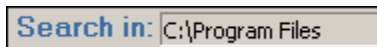
- **"View"**. Looking through icons in the following way: LargeIcon and List.



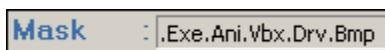
- **"Icon view"**. On this panel current extracted icon, or one selected from the list of extracted icons is displayed.



- **"Clear List"**. Clearing of the list of extracted icons.



- **"Search in.."**. On this panel the selected directory is shown, where scanning files is carried out.

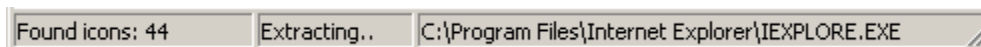


- **"Mask"**. On the panel the list of extensions of files is displayed, according to which the search and extraction of icons will be carried out. To set extension is possible in a [window of settings](#).



- **"Color of a background"**. By pressing this button, you can set color of the screen, where extracted icons are displayed.

In the bottom part of the program there is the status line:



In the first part of the status line the number of extracted icons is shown. In the second part - mode of operations. In the third part of the status line the name of a file is shown, from which icons are extracted and the path to it.

See also:

[Main menu](#)

The window of settings



Main menu

The panel of the main menu looks as follows:



On the panel there are following buttons:



- **"Open file"**. The button of opening a file ICO (*.ico) for transformation into format BMP (*.bmp).



- **"Conversion"**. The button of converting a file ICO. By pressing this button a file is converted and the window offering to save the transformed file opens.



- **"Settings"**. A call of settings of the given program. Look for details [the window of settings](#).



- **"Registration"**. The button of opening the registration window of the program. After correct registration this button disappears from the panel, (look for details [registration](#)).



- **"Help"**. Call of the Help system. A very useful button.



- **"About.."**. The button of opening the window with the information on the authors and version of the program.



- **"Exit"**. By pressing the button the program is closed, saving all the data.

See also:

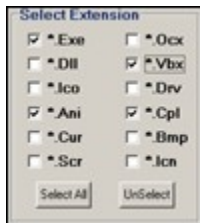
[The window of settings](#)
[PopUp menu](#)



The window of settings

The window of settings consists of two sections.

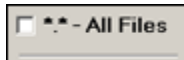
The first section



-represents the list of extensions of files. Extracting icons will be made only among those files, which extensions were marked. For example, you have chosen the following types of files: EXE, DLL, VBX. During scanning and extracting icons only files with these extensions will be viewed.

The buttons **"Select All"** and **"UnSelect"** serve for your convenience and select /unselect all specified types of files.

Second section



- consists of the switch **"*. * - All Files"**. Choosing it, icons will be extracted from files with any extensions.

See also:

[PopUp menu](#)



PopUp Menu

The PopUp menu occurs while choosing an icon from the list of extracted icons, and looks as follows:



"Save as *.ico" - save selected icon in ICO format.

"Save as *.bmp" - save selected icon in BMP format.

"Copy" - copy a selected icon into the clipboard.

