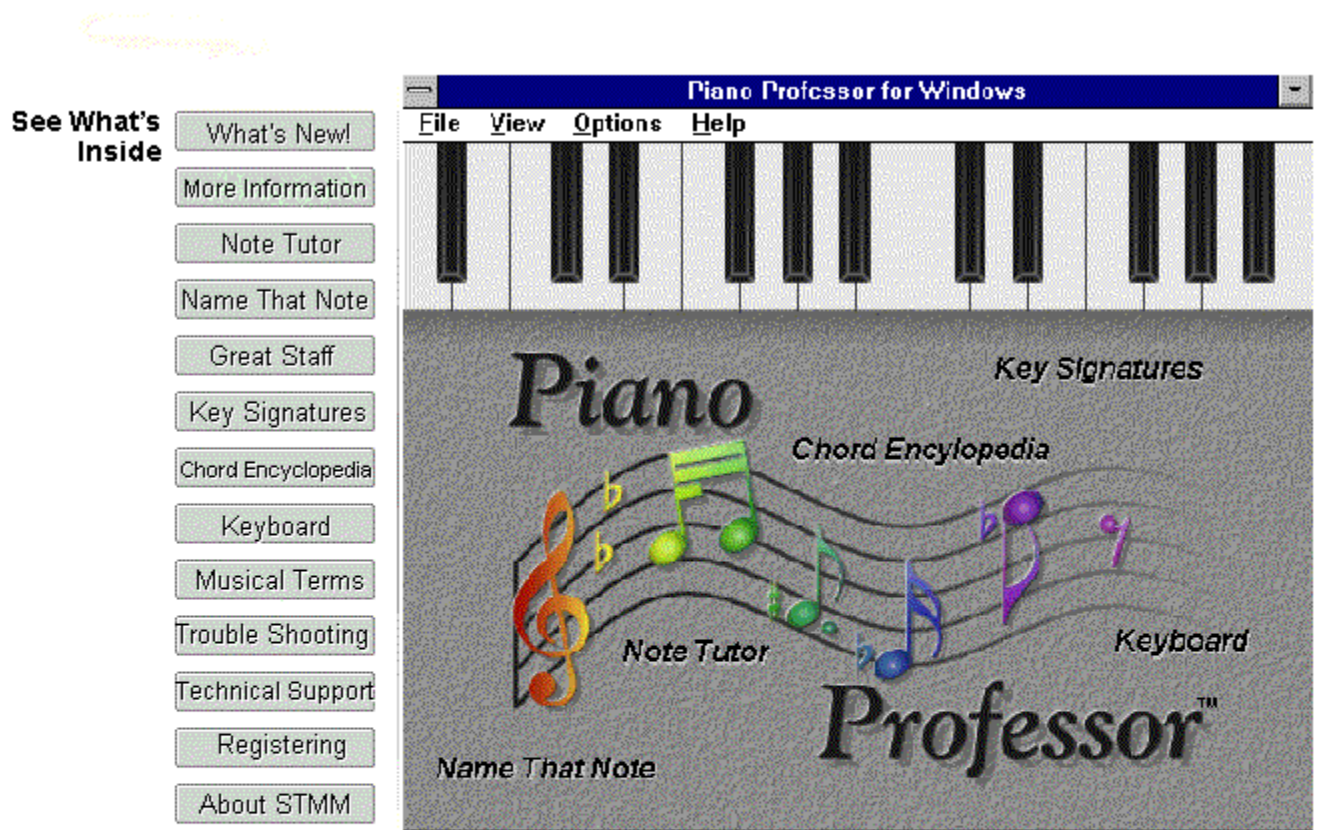
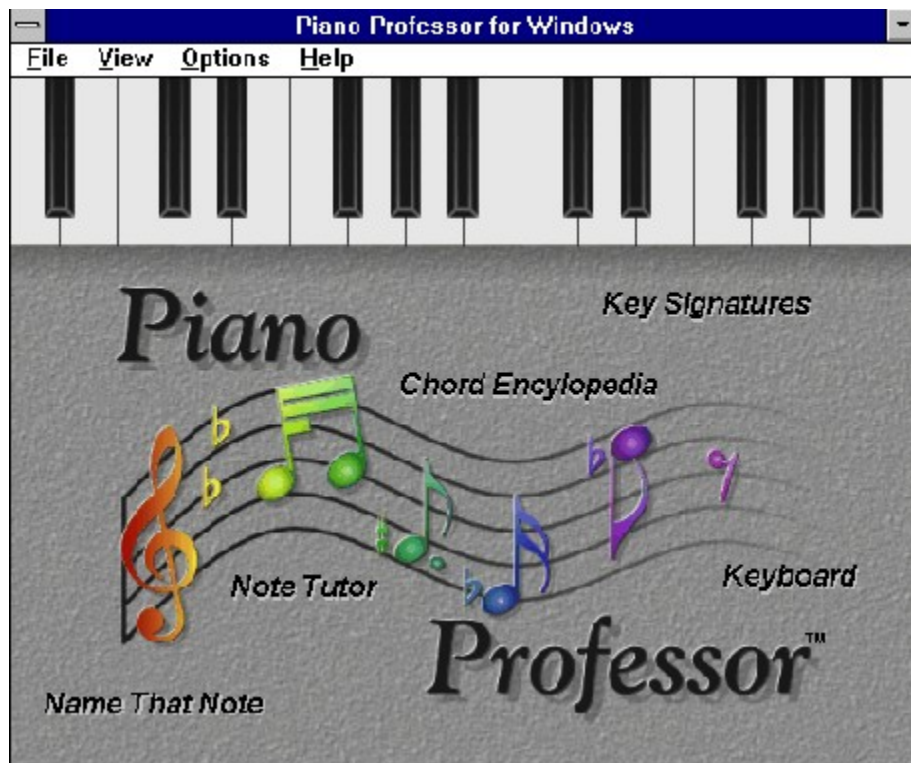


Piano Professor 2.5 Help Contents





This is the Main Menu screen of Piano Professor. From this screen you can navigate through the entire program. You simply move the mouse cursor over the selected topic on the Main Screen and when your choice appears lit in red simply double click the mouse and you will be in that section of the classroom and Piano Professor will be ready to begin teaching you.

You may also make selections and other choices from the menu options.



Whats New In Version 2.5!

With the overwhelming response we have received in orders and new suggestions and ideas we have dramatically improved Piano Professor with version 2.5. This new release is because of all the honest users who have registered their copy of the product. Keep sending in those ideas and orders as we will continue to pursue an even better product that meets your learning needs. We would like to thank those users who have taken the time to register their product and all those registered users will receive the free upgrade to this new version 2.5 of the Piano Professor.

We chose to release this as a new version simply because of the many changes and additions that were instituted. The enhancements include the following:

- ◆ Our artist has been hard at work to make the virtual keyboard appear as realistic as possible. You will see this change in the Note Tutor and Name that Note.
- ◆ Hands Free Interaction on Note Tutor and Name That Note. Now your hands don't have to leave your MIDI Keyboard. Generate a new note by simply pressing Middle C on your keyboard. Also there are no more annoying message boxes, now information is displayed right on the screen.
- ◆ Note Tutor now has the option of sticky keys or not, play with it see which you like better.
- ◆ The Key Signature screen has undergone a facelift and now looks a lot better plus it reduced the size of Piano Professor.
- ◆ We added 3 new chords to the Chord Encyclopedia, Major 7 Flat 5, 9 and Major 9. If you want even more, let us know!
- ◆ Name that Note has a cool new feature. Let's face it guessing a note by ear is hard enough (for those of us without perfect pitch). Now you learn to progressively identify notes. That is you can choose the notes you want to randomly generate. For example you can concentrate on being able to hear say F# and C without the sounds of other notes interfering. Then once you have mastered C and F#, you can add A, etc. This method of progressive learning should be a great help!
- ◆ We fixed the security screen so that it is not such a pain to type in the registration number (hint, hint).

Added in Version 2.0 (Just so you know!)

- ◆ Ability to play sound through the PC speaker. This allows those of you without sound cards to still hear and enjoy the Piano Professor.
- ◆ Some people had problems with the MIDI Mapper being a requirement. This was fixed so that the Piano Professor will now correctly identify and use other ports.
- ◆ We added the ability to RECORD and PLAY your lessons in the Note Tutor.
- ◆ The Note Tutor has some new game fun added. You can race against the clock in your attempt to identify or guess the notes.

- ◆ At the request of our European users we have added the ability to see the Solfeggio notation in the Piano Professor.
- ◆ The problems that occurred in the installation program are now completely resolved.

What is Next?

- ◆ Goodbye 16 bit, Hello 32 but...Look for speed and enhancements...any ideas out there?

Other Information

In case you would like to get the shareware version of the product on diskette or tell others where to pick up a shareware copy of the product, you may contact any of the shareware distributors out there. In particular a great shareware vendor with lots of other way cool products in their catalog is Reasonable Solutions. You may reach them at:

Reasonable Solutions
1535 E. University Drive
Mesa, AZ 85203-8132
Phone: (602) 668-0017
Orders: (800) 876-3475
Fax: (602) 668-9429

Comments

This product would not be possible without the effort of our team. We would like to take the time to thank both the Author and the team of people who helped bring this product to reality and the continuous effort of Daryl Pietrocarlo to keep taking his vision further. To see just why this program was created please see the Authors Note. We would also like to thank all our registered users out there for their help and new ideas. Please keep sending them in and we will continue to enhance the product and try to make it do the most for you.

We are currently working out arrangements with distributors in the various countries around the world since Piano Professor has made its way to over 20 countries. We would like to say Thank You to our friends in Europe, Asia, and way down under in Australia. Also a big hello and Thank You to our friends in far off places we have never heard of before, but now recognize. You are all on our giant world map that shows just how far and how widely received Piano Professor has been. Look for some new fun and exciting products to arrive January 1996. We have some way cool games and other goodies getting ready to launch! The best place to see what is happening is to check out our World Wide Web Page located at:

<http://www.servtech.com/public/stmm/>

Note Tutor

The Note Tutor was designed to help the user learn how to identify notes on the musical staves in relation to their position on the keyboard. The screen employs several different methods to help the user obtain this goal. The Note Tutor screen is comprised of several controls that allow easy operation by individuals of all ages and skill levels. The Top half of the screen contains the musical staves with both Treble and Bass levels. The lower portion of the screen contains the keyboard and the controls for different learning experiences.

The user opens the screen and selects the new note button which will randomly display different notes on the graphical staves without giving the note name to the user. The notes will only be displayed for the staff that is active. The user can attempt to guess the note without the help of the computer, but if it becomes necessary, the Eye/Ear button can be pressed and the name of the note will be displayed in the box next to the **Eye/Ear** button. The note will also be displayed in red on the graphical keyboard below the staves. As you keep practicing, the recognition of notes will become easier and easier until you are able to identify the notes without using the help button. Once you have mastered this concept, the ability to read music and play the notes on the real keyboard will be much easier. This concept can also be reversed, in so far as the user can press the keys on the graphical keyboard, and the note will be displayed on the proper staff. You will visually see the cursor change when a keyboard note is playable. Any note above and including middle C will be displayed on the Treble clef, and any note below middle C will be displayed on the bass clef.

The Controls for Note Tutor



You will have complete control of your learning experience by simply using the controls illustrated here. These controls allow you to switch between Treble and Bass; toggle Play mode or Guess mode; generate a new note; and hear and see the note illustrated both on the keyboard and the music sheet.



New Note button

This button will randomly generate notes on the currently selected staff. This allows the user to guess the note in his or her head, or to try and guess the note by pressing keys on the keyboard. If you have trouble guessing the note, you can press the **Eye/Ear** button at any time to receive the answer. By using this method, the user will become more and more proficient at reading and identifying the notes.



Eye/Ear button (Show and Hear)

This button allows the user to obtain help, by sight and sound, on the note shown on the currently selected staff. The selected staff is shown by the Staff button. If the user cannot identify the note and wishes to use the computer for help, this button will display the key on the graphical keyboard below the staff in red that corresponds to the note. The name of the note will also be displayed in the Note Information box. If sound is available, the note will be played.



Staff button

This button identifies the active staff. When you press the **New Note** button, or the **Eye/Ear** Button, the information displayed, whether it be a new note or information on that note, will be related to the note on the staff displayed on this button.

The Staff button is a toggle button. When the button says Bass on it, and has the Bass clef symbol, the New Note button (shown above) will only produce notes that fall into the Bass range (middle C and lower). Pressing the button once will toggle you into Treble mode. This allows you quick access between the two modes.



Play/Guess button

This set of buttons allow the user to switch between attempting to guess a note on the staff and playing the keyboard and seeing the notes appear on the staff. In Play Piano mode the notes pressed on the keyboard on the screen or a MIDI keyboard attached to the computer are displayed on the staves. In Guess Note mode a note will appear on the staves and the user is expected to press the appropriate key on the screen or with the MIDI keyboard.

In addition to all of this, the user can press any of the white keys on the keyboard to simulate playing the keyboard. When the key is pressed, the note is lit up in red, the musical note is played (if there is sound) and the note name is displayed in the Note Information box.

The Option Menu

The option menu contains a few entries that are explained below.

Record/Play - allows you to record a sequence of keys, and then play them back.

Sticky Keys - The default behavior when a key is pressed is to see the key lit in red, this is what is considered a sticky key. By deselecting this option, the key will remain red only as long as you hold the mouse button down on that key.

Demo Fur Elise - This option will cause Piano Professor to play a rendition of Beethovens Fur Elise.

Guess Timer - Will bring up a dialog box that allows you to set an option to attempt to beat the professor. By setting this option to a certain number of seconds and putting the Note Tutor in *Guess Note* mode, you will have to guess the new note in under the number seconds you entered. For example, if you entered 7 seconds and put Note Tutor in *Guess Note* mode, after pressing the *New Note* button, you will have seven seconds to guess the note before Piano Professor guesses it for you!

Chord Encyclopedia

The chord encyclopedia is a reference to different chords. It allows the user to pick the key, chord name and inversion. Once the user chooses all the options, the View Key will enable them to see and hear the chord (if sound is available). The keys will be highlighted in red. The user will also hear the chord played if a sound device has been installed.

A small rectangular control box with a light gray background. It has two sections. The left section is titled 'Key' in blue text and contains a dropdown menu with 'C' selected. The right section is titled 'Chord' in blue text and contains a dropdown menu with 'Major' selected. Both dropdown menus have a small downward-pointing arrow on the right side.

Chord Selection box

By using the above control box the user can drop down a menu of the available keys to select the chord from. The user can also change the chord that is to be displayed in the same manner. The available keys are: C, D flat, D, E flat, E, F, F sharp, G, A flat, A, B flat, B. The available chords are: Major, Minor, 6, 7, Major 7, Minor 7, Dim, Dim 7, Aug, Aug 7, Sus 4, Minor 7 Flat 5, 9, Major 9.

Explanation of Chords

A **major chord** is a three key chord called a triad. The triad contains the first, third and fifth notes of the scale that the chord is in. For the key of C, these notes would be C, E and G (at root position).

A **minor chord** is similar to a major chord, but with the third note of the scale lowered a half step. In the case of C, the third note of the scale is E, therefore if you lower this note a half step it will result in E Flat. So the a C Minor chord would be C, E Flat, G.

A **seventh chord** is comprised of the major chord and the seventh note of the scale one half step lower. As an example, the seventh note of the C scale is B. To get the seventh chord play the triad plus the seventh note minus a half step. In this case, a half step lower would be a B flat. Thus the notes for a C7 would (root position) would be C, E, G and B Flat.

For further information on types of chords, refer to any book on musical theory.

A small rectangular control box with a light gray background. It has a title 'Chord Inversion' in blue text. Below the title are four radio button options: 'Root Position', 'First Inversion', 'Second Inversion', and 'Third Inversion'. The 'Root Position' option is selected.

Chord Inversion box

Chord Inversions are simply a different way to represent a given chord. The root position has as the first key, the first note, the name of the key corresponding to the chord. So for the chord C major, the key C on the piano would be in the root position. The first inversion has the third note of the scale as the first position, and the second inversion has the fifth note of the scale in the first position. For C major - First Inversion, the first key in the triad would be E followed by G and C, and for the second inversion, the first key in the triad would be G followed by E and C.



Eye/Ear button (Show and Hear)

This button allows the user to obtain help, by sight and sound, on the chord and key combination shown in the Chord Selection box. The selected Chord, Key and Inversion are shown on the graphical keyboard with a red highlight. Below the graphical keyboard the chord name will be identified. If sound is available, the chord will be played.

Key Signatures

The Key Signature screen will help the user to identify all the different key signatures. A key signature is shown at the beginning of each bar of music. It tells the musician what key the music is in.

The key is determined by the composer, when she or he decides that a particular note will be flatted or sharped throughout the entire piece without further instruction. The symbols may be either flats or sharps., they are never mixed. This tells the reader of the music what to do when they see that note in the music. If the symbol is on that note in the key signature, and the user is now playing that note, the musician must play that note either flatted or sharped, depending on the symbol.

A flat implies that the player lowers the note a half step. Therefore, if the key signature shown is in the key of F, that is, there is a flat symbol on the B note of the staff, every time the player sees a B in the music he/she should play a B Flat.

The same goes for sharps, except that you must raise the note a half step. Therefore, if the key signature shown is in the key of G, that is, a sharp symbol appears on the F note of the staff, every time the user sees an F in the music, they should play F sharp. It is very useful to the musician to be able to recognize the keys at a glance, and be able to comfortably play in these keys without much thought. By learning to recognize these keys quickly the player will be able to play more music with more proficiency.

Name That Note

This screen can be used to train your ear to recognize notes based solely on their sound. The computer will play a note for you, it up to you to guess the correct note. By Pressing the **New Note** button, the user can have the computer play a new note. The computer will play a note in the range designated by the **Range of Notes to Generate** selection. The **Ear** button will allow you to hear the last note played by the computer. The **Generate Only** listbox allows you to choose only those notes you wish to generate. This is an excellent option because it allows you to limit the notes generated by the program, thus enabling your ear to distinguish between the sounds of only specific notes. In this way you can concentrate on being able to hear say F# and C without the sounds of other notes interfering. Then once you have mastered C and F#, you can add A, etc. This method of progressive learning should be a great help!

As you continue to try and guess different notes, the computer will keep track of your progress by displaying your current statistics. It will tell the number of notes you have guessed since you entered the Piano Professor, or since the last time you cleared the score by using the **Reset Score** menu option. The computer will also record the number of times you have tried to guess the current note. The **Average Number of Guesses** is a running average which is computed by the total number of guesses divided by the number of correct notes guessed.

HINT:

If you are really struggling trying to guess the note, you can obtain the answer by placing the mouse cursor over the ear button and pressing the **RIGHT** mouse button. Remember that this method does not contribute to your overall statistics.

The Controls for Name that Note



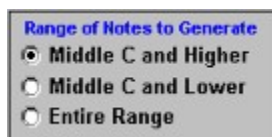
New Note button

This button will randomly generate notes over the selected note range. The user will then attempt to guess the note by pressing keys on the keyboard. The computer will then keep a record of incorrect guesses and average out the number of guesses per note. If you have trouble guessing the note, you can press the **Ear** button, with the right mouse button, at any time to receive the answer.



Ear Button

The Ear button will allow the user to hear the current note again. This button may be pressed as many times as necessary. If you should get stuck on a given note then you can click the Ear button with the right mouse button to receive the answer.



Range button

The Range button will allow you to decrease the number of notes that Name that Note can randomly pick. If the Range button is set to Middle C and Higher then the note that is generated is within the range of Middle C and Higher. If the Range button is set to Middle C and Lower then the note that is generated is within the range of Middle C and Lower. The last option, Entire Range, will not limit the scope of notes that can be picked. It is advisable to choose a limited range of notes before trying to use notes from the entire range.

Great Staff

The Great Staff is a reference screen designed to show the user the notes names at the positions on both the Treble and Bass clefs. It is used to help the user identify what note is a specific position on either of the staves. What is nice about this screen is that it gives a pictorial and full representation of both staves, and the user can see all the note names on one screen.

This screen can be brought up from any other screen in the product. It comes up as a reference screen. What this means is that the screen is no meant to have interactive capabilities. When the user is done using this screen, he or she should press the Done button to close the screen and return to the base screen from which they brought up the Great Staff screen.

Keyboard Screen

The Keyboard screen explains the different parts of the piano keyboard, as well as some of the notation used on a piano keyboard. If you ever wondered what a sharp or flat was, or why there are white and black keys, this is the screen for you to use!

Using the Piano Professor™

Using the Piano Professor is simple and easy. Descriptive pull down menus allow you to navigate your way through the product quickly and easily.

The File menu option

The **File** option contains the following sub options:

Music On will allow you to turn the music on or off system wide. If there is a check mark next to the option, the music will be turned on throughout the product. If there is no check mark next to the option, the music will be turned off throughout the system.

Register Software will allow you to register this product with SofTech Multimedia Inc. Registering the software has many advantages, see the section on Product Registration. This option will not appear if the product is registered.

The View menu option

The **View** option allows you to change to any screen on demand, simply pull down the menu and select the screen that you wish to go to. The Great Staff screen will come up in a view only mode. This means that the user uses the screen as a reference, and closes it when he/she is done using it. There is help for all the screens contained in the product. The help will aid the user in using the screen he/she is on.

The Help menu option

Under the **Help** menu option, you will find the different help options that allow you access different types of help.

Help on this Screen will give you access to help that pertains to the specific screen that you are on. This will enable you to quickly access help about the screen that will give you help and tips on how to use the screen.

Contents will take you to the Help Table of Contents which includes all the major topics in the help file. From here you can just click on the highlighted topics and you will jump directly to the help topic that you just pressed.

Search for Help on... will allow you to search for help on any of the specific topics in the help file. You can search for topics by typing the key words into the search box that comes up. When you have found the topic that you wish to go to, you can press the **Show Topics** button, from there you can press the **Go to** button to go to the help screen for that topic.

About Piano Professor explains what version of the Piano Professor you are running, how to contact SofTech Multimedia Inc. , as well as registration and system information. The system information is a useful tool that will determine you system hardware as well as you currently installed multimedia devices.

Technical Support is an easy way for you to find out how to contact SofTech Multimedia Inc. for any technical support, registration information or orders for new products.



Reference Information

The chord encyclopedia is a reference to different chords. It allows the user to pick the key, chord name and inversion. Once the user chooses all the options, the **View Key** will enable them to see and hear the chord (if sound is available). The keys will be highlighted in red. The user will also hear the chord played if a sound device has been installed.

Explanation of Chords

A **major chord** is a three key chord called a triad. The triad contains the first, third and fifth notes of the scale that the chord is in. For the key of C, these notes would be C, E and G (at root position).

A **minor chord** is similar to a major chord, but with the third note of the scale lowered a half step. In the case of C, the third note of the scale is E, therefore if you lower this note a half step it will result in E Flat. So the a C Minor chord would be C, E Flat, G.

A **seventh chord** is comprised of the major chord and the seventh note of the scale one half step lower. As an example, the seventh note of the C scale is B. To get the seventh chord play the triad plus the seventh note minus a half step. In this case, a half step lower would be a B flat. Thus the notes for a C7 would (root position) would be C, E, G and B Flat.

Chord Inversions are simply a different way to represent a given chord. The root position has as the first key, the first note, the name of the key corresponding to the chord. So for the chord C major, the key C on the piano would be in the root position. The first inversion has the third note of the scale as the first position, and the second inversion has the fifth note of the scale in the first position. For C major - First Inversion, the first key in the triad would be E followed by G and C, and for the second inversion, the first key in the triad would be G followed by E and C.



Registration



[Registering via U.S. Mail](#)



[Registering via CompuServe](#)

[Registering via World Wide Web](#)



[Registering via Telephone](#)



[Benefits of Registering](#)



U.S. Mail Registration

You may register your copy of Piano Professor for Windows by printing the registration form. If you do not have a printer you may copy the information from the screen.

The cost of Piano Proferssor is \$24.95 and New York State residents please add 8% sales tax. There is a shipping and handling fee of \$4.00 for U.S. and Canadian residents and \$6.00 outside the U.S. Enclose your check or money order (drawn on U.S. funds) for the computed sum on the registration form and made payable to SofTech Multimedia, Inc. Mail your order to:

SofTech Multimedia, Inc.
79 Springfield Avenue
Rochester, NY 14609-3607
Phone: (716) 288-5830
Fax: (716) 482-7105

The day we receive your order we will ship your 3.5 diskette(s).

You will also receive your registration serial number that will make your copy of Piano Professor for Windows a registered copy. You will also be eligible for a free update on the next version of the product.



Registering via CompuServe

Electronic orders may be placed with CompuServe Information Services. The amount of \$34.95 will be billed directly to your CompuServe statement for your convenience. This covers all shipping and handling charges as well as applicable sales tax. Just type **GO SWREG** and request SofTech Multimedia, Inc. Our SWREG ID is **2862**.

We receive confirmation of your order from CompuServe within a couple of hours. We will process your letter of authorization, official diskettes, and security ID and place it in the U.S. Mail within 1 day of your order. We will mail you, via CIS mail, your security ID, within 24 hours, so that you can remove the end registration reminder and gain access to all of the programs features.



Registering via Telephone



You may register your copy of Piano Professor for Windows using MasterCard, Visa, American Express, and Discover Card. This is a service provided by Public (software) Library which we will be using as our distributor for credit card orders. You may contact PsL at (800) 242-4775. You will need to specify the Product Number: **11334** for Piano Professor. PsL operates from 9:00am - 6:00pm Pacific Time Monday through Friday. For residents outside of the United States or for those that cannot reach PsL at the 800 number, here are some alternative numbers:

Toll Number: 713-524-6394

Fax Number: 713-524-6398

You may print the Credit Card [registration form](#) if you desire to mail or fax in your credit card order.

Please note that the above numbers are for credit card orders only. Any questions about the status of the shipment of the order, refunds, registration options, product details, [Technical Support](#), volume discounts, educational discounts, dealer pricing, or site licenses should be directed to SofTech Multimedia, Inc. PsL cannot provide you with order status or any of the other aforementioned items.

To insure that you get the latest version, PsL will notify us the day of your order and we will ship the product directly to you.



Benefits of Registering

You may have noticed that the *Piano Professor* has certain limitations built into it for non-registered users. By registering the product, you can unleash its full potential. We have tried only to limit the more advanced features while still providing you enough opportunity to explore and use the product and *try before you buy*. The following will illustrate what you will gain from registration:



You will receive a registration serial number and password along with 2 official diskettes with the latest version of Piano Professor. You will also be eligible for a free upgrade to the next revision.



The Note Tutor screen will allow you to play the entire piano, instead of just one octave.



You will be able to access all the chords on the Chord Encyclopedia rather than just Major, Minor and Sixth chords.



On Name that Note you will get the benefit of reducing the notes generated by the computer to only half of the keyboard instead of the entire range.



Another advantage of registration will be the ability to see all the key signatures instead of a restricted set on the Key Signature screen.



You will receive 90 days of free technical support.



Finally, registration of the product will help all of us at SofTech Multimedia Inc. pay our bills, eat, and bring you more great software at affordable prices.

Order Form for Piano Professor for Windows (latest version). (Check or Money Order)

If you have a printer you may print this form by selecting Print Topic from the File menu. For those without a printer you may copy this information on a sheet of paper.

Enclose your check or money order (drawn on U.S. funds) for the amount of \$24.95 per copy and made payable to SofTech Multimedia, Inc. New York State residents please add 8% sales tax (\$26.95 sub-total). There is a shipping and handling fee of \$4.00 for U.S. and Canadian residents and \$6.00 outside the U.S. Please Mail to:

SofTech Multimedia, Inc.
79 Springfield Avenue
Rochester, NY 14609-3607
Phone: (716) 288-5830
Product Code for Piano Professor for Windows is: 11334

Your Name: _____

Address: _____

Address: _____

City: _____

State/Province: _____

Zip/Postal Code: _____

Telephone: _____

E-Mail Address:(if applicable): _____

Desired Features, Questions, Comments: _____

Number of Copies: _____ X \$24.95 = _____

NY Sales Tax(if applicable) @8.00% = _____

Shipping & Handling (see above) = _____

Total: _____

Thank you for your support!

Order Form for Piano Professor for Windows (latest version)

(Credit Cards Only)

If you have a printer you may print this form by selecting Print Topic from the File menu. For those without a printer you may copy this information on a sheet of paper.

The amount of \$24.95 and made payable to SofTech Multimedia, Inc. New York State residents please add 8% sales tax (\$26.95 total). There is a shipping and handling fee of \$4.00 for U.S. and Canadian residents and \$6.00 outside the U.S.

This form is for credit card orders such as MasterCard, Visa, American Express, or Discover Card. You may Email this completed form by CIS Email to 71355,470. You may also FAX or Mail this completed form as well. Please fill out the form completely and be sure to sign the signature line. Please Fax(24 Hours a day/7 days a week) or Mail to:

**Public (software) Library
P.O. Box 35705
Houston, TX 77235-5705
FAX: (713) 524-6398**

Product Code for Piano Professor for Windows is: 11334

Your Name: _____

Address: _____

Address: _____

City: _____

State/Province: _____

Zip/Postal Code: _____

Telephone: _____

E-Mail Address:(if applicable): _____

Credit Card Type: _____

Name as it appears on Credit Card: _____

Expiration Date of Credit Card: _____

Credit Card Number: _____

Signature of Card Holder: _____

Desired Features, Questions,Comments: _____

Number of Copies: _____ X \$24.95 = _____
NY Sales Tax(if applicable) @8.00% = _____
Shipping & Handling (see above) = _____
Total: _____

Thank you for your support!

Registering via World Wide Web



You may register your copy of Piano Professor for Windows using MasterCard, Visa, American Express, and Discover Card on the World Wide Web. This is a service provided by Public (software) Library which we will be using as our distributor for credit card orders. You can get to the Web Registration form by setting your Web Browser to:

<http://www.servtech.com/public/stmm/>

Once there look for the link that says REGISTER NOW. This will give you the order entry screen that you simply fill out and submit. PsL will notify us of your order and your product will ship in 24-hours. If you want your passcode issued via electronic mail, please put your email address on the order form.

You may print the Credit Card [registration form](#) if you desire to mail or fax in your credit card order.

Please note that the is for credit card orders only. Any questions about the status of the shipment of the order, refunds, registration options, product details, [Technical Support](#), volume discounts, educational discounts, dealer pricing, or site licenses should be directed to SofTech Multimedia, Inc. PsL cannot provide you with order status or any of the other aforementioned items.

To insure that you get the latest version, PsL will notify us the day of your order and we will ship the product directly to you.



Trouble Shooting Guide

The following section should be consulted before calling SofTech Multimedia, Inc. for technical support. This section is intended to provide questions and answers to the most common problems with Piano Professor for Windows. If you are having a problem with the software that is not covered in this section then see the section titled **Technical Support**.

Q: When first starting Piano Professor for Windows I receive a MIDI Sequencer error message like the following:



A: The above message is not an error message but an informational message. The message is stating that your sound card may not be able to correctly sequence MIDI sounds. You can disable the message by clicking on the box: *Don't display this warning in future.*

Q: Why do the colors in the Piano Professor look funny?

A: The Piano Professor for Windows uses 256 color graphics. If the colors are funny on your system then you are using a video resolution with less than 256 colors. The Piano Professor will run correctly with less than 256 colors but the color graphics on the opening screen and in other places will look funny. The way to fix this is to use Windows Setup to change the current video resolution to one with at least 256 colors. Please refer to your Windows manual for information on how to change the video resolution with Windows Setup.

Q: Why doesn't the sound play on my system?

A: Sound may not play on your system for a number of reasons. The first and most obvious is do you have a sound card installed on your system. If there is a sound card in your system then check to see that the sound drivers (supplied by the card's manufacturer) are installed correctly. If both of the above things are checked and OK then attempt to play the file OPENING.MID from the PIANPROF\SOUND directory using the media player. If the sound does not play with the media player then you do not have your MIDI mapper set correctly for your sound card. Check the MIDI Mapper in the control panels to see that your MIDI settings are valid and are not set to *NONE*.

General Sound Info and Helping Us to Help You

Your sound card must have MIDI capabilities. Most of the sound cards on the market (ie. Soundblaster and Sound/FX) are able to support MIDI. If you are unsure, please check your owner's manual.

If your sound card meets the above specifications and the Piano Professor is still not playing sound, or is presenting the MIDI error message...

A. Make sure that the MIDI Mapper drivers are installed

correctly. This can be checked easily by using the Media Player shipped with Windows, and attempting to play a MIDI file through the MIDI Sequencer. A Valid MIDI file was shipped with Piano Professor. It can be found in the "sounds" directory under the directory in which you installed Piano Professor. The file name is "opening.mid".

If Method A does not work, consult the Windows documentation, or your sound card manual for proper configuration.

If the file plays through the Media Player as in Method A...

B. Check the MIDI Mapper Setup as follows:

1. Go into Control Panel
2. Click on MIDI Mapper
3. Press the "Edit" button

You should see the following heading:

Src Chan	Dest Chan	Port Name	Patch Map Name	Active
1	1	(Sound Card Dependent)	[None -or- User selected patches]	[X]
2	2	"	"	"
.	.	"	"	"
.	.	"	"	"
16	16	"	"	"

Make sure that all of the "Port Names" are filled with the appropriate port (ie. mine says "SB Pro 2 Synth"). Especially channels 10-16, since these are the channels that seem not to get configured properly during setup.

The program checks to see if there are MIDI OUT devices present in the Windows system configuration. If it finds them, it attempts to open this device for reading so that the MIDI keyboard can be read in. If NO MIDI OUT DEVICES are found, the system does not attempt to open the port.

It is helpful if we have what Piano Professor beleives to be your system configuration. Here is an easy way to obtain your system configuration.

1. Click on the "Help" menu at the top of your Piano Professor Screen.
2. Choose "About Piano Professor". The Piano Professor "About" screen should appear.
3. Click on the button that says "System Info"
4. Choose "Multimedia Information" from the drop down list above the information area.
5. Click on the "Save" button.
6. Send this information back to SofTech Multimedia, Inc.



Musical Terms

Used to Indicate Tempo

Used to Indicate Change in Tempo

Used to Indicate Volume of Sound

Used to Indicate Change in Volume of Sound

Used to Indicate Simultaneous reduction of Tempo & Volume

Used to indicate Mood, Degree, Intensity, or Style

Musical Terms that Indicate Tempo

Slow

<i>Lento</i>	Slow
<i>Largo</i>	Broad
<i>Adagio</i>	At ease, slow, drawn out
<i>Grave</i>	Heavy, serious
<i>Larghetto</i>	Not so broad as <i>Largo</i>

Medium

<i>Andante</i>	Medium slow
<i>Moderato</i>	Moderate
<i>Allegretto</i>	Less fast than <i>Allegro</i>
<i>Andantino</i>	Less slow than <i>Andante</i>

Fast

<i>Allegro</i>	Fast
<i>Vivace</i>	Lively
<i>Presto</i>	Very fast
<i>Vivacissimo</i>	Livinglier than <i>Vivace</i>
<i>Prestissimo</i>	Even faster than <i>Presto</i>

-ino, -etto: The suffix, *-ino* or *-etto*, added to one of the tempo indications weakens or implies less quality of the original term.

-issimo: The suffix, *-issimo*, added to one of the tempo indications intensifies the quality of the original term.

non troppo Not too _____ (fast or slow)

Musical Terms that Indicate a Change in Tempo

<i>Accerlerando</i>	Getting faster
<i>Stringendo</i>	Rushing
<i>Ritardando</i>	Slow down, hold back
<i>Rallentando</i>	Slowing down
<i>Allargando</i>	Getting broader
<i>Ritenuto</i>	Held back
<i>Piu</i>	More
<i>Meno</i>	Less
<i>Piu mosso</i>	Faster
<i>Meno mosso</i>	Slower
<i>A tempo</i>	In tempo
<i>Tempo Primo</i>	First tempo
<i>Listesso tempo</i>	The same tempo

Musical Terms that Indicate Volume of Sound

<i>Forte (f)</i>	Loud
<i>Piano (P)</i>	Soft
<i>Fortissimo (ff)</i>	Very loud
<i>Pianissimo (pp)</i>	Very soft
<i>Mezzo forte (mf)</i>	Medium loud
<i>Mezzo piano (mp)</i>	Medium soft

Levels louder than **ff** are indicated by adding additional **f** s:
fff **ffff**

Levels softer than **pp** are indicated by adding additional **p** s:
ppp **pppp**

Musical Terms that Indicates a Chnage in Volume of Sound

<i>Crescendo</i>	Growing louder
<i>Decrescendo</i>	Growing softer
<i>Dimenuendo</i>	Growing softer
<i>Forte piano (fp)</i>	Begin the note loud, but drop it to soft immediately
<i>Sforazando, sforzato (sf, fs, sfz)</i>	Forced, accented

Musical Terms for simultaneous reduction of Tempo & Volume

<i>Calando</i>	Decreasing
<i>Smorzando</i>	Dying away
<i>Morendo</i>	Dying down

Qualifying Terms used to indicate Mood, Degree, Intensity, or Style

<i>Molto</i>	Very, much
<i>Poco</i>	A little
<i>Un poco</i>	A little
<i>Poco a poco</i>	Little by little
<i>Piu</i>	More
<i>Meno</i>	Less
_____ <i>non troppo</i>	Not too _____
<i>Non troppo</i> _____	Not too _____
_____ <i>ma non troppo</i>	Not too _____
<i>Agitato</i>	Agitated
<i>Amabile</i>	Affectionately
<i>Animato</i>	Spirited, animated
<i>Appassionato</i>	Passionately
<i>Cantabile</i>	Singing
<i>Con anima</i>	With spirit
<i>Con brio</i>	With brilliance
<i>con dolore</i>	With grief
<i>Con forza</i>	With strength
<i>Con fuoco</i>	Fiery, with fire
<i>Con moto</i>	With movement
<i>Dolce</i>	Sweetly
<i>Dolente</i>	Grieving
<i>Energico</i>	Energetically
<i>Espressivo</i>	Expressively
<i>Giocoso</i>	Jestingly, playfully
<i>Grazioso</i>	Gracefully
<i>Legato</i>	Smoothly, slurred
<i>Leggiero</i>	Lightly
<i>Lusingando</i>	Cajolingly, alluringly
<i>Maestoso</i>	Majestically
<i>Marziale</i>	Martially
<i>Misterioso</i>	Mysteriously
<i>Perdendosi</i>	Dying away
<i>Pesante</i>	Heavily
<i>Piacevole</i>	Pleasingly, agreeably
<i>Portamento</i>	Sliding of the voice
<i>Risoluto</i>	Resolutely
<i>Scherzando</i>	Playfully, jokingly
<i>Sostenuto</i>	Sustained
<i>Staccato</i>	Short and detached
<i>Teneramente</i>	Tenderly

Tenuto

Held

Shareware Trade Association and Resources(STAR)



SofTech Multimedia, Inc. is also a member of the STAR. The following is the Mission Statement of STAR. This statement was extracted from STAR.

STAR is a trade association established to provide the shareware community with a vehicle for networking, resource-sharing, publicity, and marketing assistance. STAR will promote the free and open exchange of information, creative expression, and quality and ethics in shareware. STAR will heighten the public's awareness of shareware, and will advance the state of the shareware industry.

Shareware Trade Association & Resources

P.O. Box 13408

Las Vegas, NV 89112

Voice: (702) 735-1980

Fax: (702) 735-4603

Educational Software Cooperative



SofTech Multimedia, Inc. is working to produce educational multimedia titles and we are now members of the Educational Software Cooperative. The goals and agenda of the ESC fit into the realms of our vision for future software titles. We hope that as members, we will be one of the driving forces into the era of educational software.

Educational software is one of the most popular and fastest-growing categories of software. In 1992, the Educational Software Cooperative (ESC) was founded by Andy Motes, author of the award-winning "School Mom" program.

Incorporated in 1994, ESC is a nonprofit organization whose purposes are to advance the mutual benefit of authors, publishers, dealers and distributors of educational software; to voluntarily cooperate formally and informally with each other to better develop, advertise, distribute and sell educational software; and to provide the public with information regarding the benefits, uses, and availability of educational software.

Software users, educators, developers, publishers, distributors, and others work together to promote these goals.

A wide variety of educational software titles for both children and adults are available on a CD-ROM which can be purchased through many of the Author and Vendor members. We expect to produce a new CD approximately every six months.

We currently publish a bimonthly newsletter containing articles written by ESC members and associates, along with product reviews, tips and suggestions for better ways to write and market software and discussions of educational issues. In this newsletter, you'll also find a list of new program additions and updates.

Since June 1993, the ESC has had its own section on CompuServe where its members can communicate directly with each other and the public. You can participate in this section whether or not you are a member of ESC. Just enter GO EDFORUM at any CompuServe prompt, and join us in Section 2.

Our activities have included participation in trade association events in Indianapolis and Atlanta. We work with other organizations on issues, such as software ratings, that affect the industry as a whole.

You may contact the Educational Software Cooperative at:

Educational Software Cooperative
11846 Balboa Blvd, Suite 226
Granada Hills CA 91344

Registration Benefits

By registering Piano Professor for Windows, you gain the following:

- 1.** Set of registered diskettes - You will receive the latest and greatest release of Piano Professor for Windows, on your choice of either a 3.5" (the default), or 5.25" diskettes.
- 2.** A registration number - which will remove the annoying "SHAREWARE NOTICE" reminder screens.
- 3.** Peace of mind - you have fulfilled your obligation, and have made the Shareware concept work. You are not breaking the law, at least in this particular case!
- 4.** Access to support - If you have problems using Piano Professor for Windows, we are here to help you. Support is guaranteed for 90 days from the date of registration. If we can't resolve your problem to our mutual satisfaction, we will refund your money, as long as the problem is brought to our attention within the 90 day time frame.



Technical Support

Registered users of Piano Professor can obtain technical support through either CompuServe or the Internet by sending mail to our technical support department. We will provide all registered users 90 days of free technical support. Technical support questions should be addressed with the subject heading: ***Piano Professor Support Needed***. You should mail these to CompuServe Account 74043,1703. For those mailing us from the internet, the address would be 74043.1703@compuserve.com. You will receive a reply within 24 hours addressing your questions, problems, ideas, and even criticisms.

In order to answer your technical questions you will need to provide us with the following:



Your full name.



Your address.



Your telephone number or e-mail address so we can contact you.



The name of the product.



The product version number.



Your product serial number.

You can obtain the last three items by doing a Help/About in the program and the information will be provided to you.

While we have instituted quality control and software engineering practices, those little nasty critters called bugs may have wandered in at some point. If you happen to locate and bugs, major problems, etc. you may submit bug reports to us through CompuServe, internet, voice mail, or regular mail.

We have also attempted to test this product on a variety of computers and under various conditions, but we cant possibly try every combination, so please feel free to inform us of any difficulties that you may encounter, registered or non-registered. If you are reporting a bug, please include the following:



An exact description of the problem.



A list of your system's hardware and software.



What you were last doing when the bug occurred



Can you reproduce the bug more then once

In terms of the content. We have worked with professionals in the music arena for their input

and suggestions on this product. If you have any questions or concerns regarding the content aspect, such as disagreeing with something as it is stated or presented, please feel free to let us know that as well.

We welcome any suggestion, criticism, and/or grand ideas that could help make this product better. We promise to take into consideration any reasonable ideas that you may provide. As long as there is enough support and ideas, you can be sure to continue to see new and improved versions.

Contact information:

SofTech Multimedia, Inc.

79 Springfield Avenue

Rochester, NY 14609-3607

Phone: (716) 288-5830

Sales: (800) 624-3197

Fax: (716) 482-7105

Compuserve: 74043,1703

World Wide Web: <http://www.servtech.com/public/stmm>

Internet: 74043.1703@compuserve.com



End-User License Agreement

Shareware. This product is being released as Shareware. You may use it for a 30 day trial period. If you use it for more then 30 days then you are required to [register](#) this product. You may distribute the Shareware version of this product to anyone you wish, so long as all files remain and nothing is altered in anyway. The registered version of this product **MAY NOT** be distributed freely and you must comply with the following Licensing Agreement stated below. If at the end of 30 days you choose not to register the product it must be removed from your hard drive.

Sysops and Shareware Distributors. You may upload, post, or otherwise redistribute this product so long as you distribute all files that are in the Packing List; you only redistribute only the Shareware(UNREGISTERED) version of this product; that you do not charge a fee except for that of a handling and preparation fee which should not exceed more then \$5.00 (U.S. Currency) per disk.

License. You may use the Registered Product and Disks on any computer, provided that the software is used on only one computer and by one user at a time.

Restrictions. You may not commercially distribute the Registered Product Disks or Programs or otherwise reproduce, publish, or distribute or otherwise use the Disks or Programs in any manner that may infringe any copyright or other proprietary right of SofTech Multimedia, Inc., the Suppliers, or any other party or assign, sublicense, or otherwise transfer the Disks or this agreement to any other party unless such party agrees to accept the terms and conditions of this agreement. This license and your right to use the Disks and the Programs automatically terminates if you fail to comply with any provision of this agreement. You may not transfer, publish, or distribute your product registration information, nor replicate registered copies of this product. Only the Shareware (UNREGISTERED) version may be distributed freely.

U.S. GOVERNMENT RESTRICTED RIGHTS. The disks and the programs are provided with RESTRICTED RIGHTS. Use, duplication, or disclosure by the Government is subject to restrictions as set forth in subparagraph (c)(1)(ii) of the Rights in Technical Data and Computer Software Clause at DFARS (48 CFR 252.277-7013). The Proprietor of the compilation of the Programs and the Disks is SofTech Multimedia, Inc., 79 Springfield Avenue, Rochester, NY 14609-3607.



Product Warranty

Limited Warranty. SofTech Multimedia, Inc. warrants the physical Disks to be free of defects in materials and workmanship under normal use for a period of 30 days from the purchase date. If SofTech Multimedia, Inc. receives written notification within the warranty period of defects in materials or workmanship in the physical Disks, and such notification is determined by SofTech Multimedia, Inc. to be correct, SofTech Multimedia, Inc. will, at its option, replace the defective Disks or refund a prorata portion of the purchase price of the software, this does not include any charges incurred in obtaining or downloading this product nor any shareware distributor fees, nor disks obtained from a distributor. **THESE ARE YOUR SOLE REMEDIES FOR ANY BREACH OF WARRANTY.**

EXCEPT AS SPECIFICALLY PROVIDED ABOVE, THE DISKS AND THE PROGRAMS ARE PROVIDED AS IS WITHOUT ANY WARRANTY OF ANY KIND. NEITHER SOFTECH MULTIMEDIA, INC. NOR THE SUPPLIERS SHALL BE RESPONSIBLE FOR ANY CLAIMS ATTRIBUTABLE TO ERRORS, OMISSIONS, OR OTHER INACCURACIES IN THE DISKS OR PROGRAMS. THE ENTIRE RISK AS TO THE RESULTS AND PERFORMANCE OF THE DISKS AND THE PROGRAMS IS ASSUMED BY THE USER. FURTHER, NEITHER SOFTECH MULTIMEDIA, INC. NOR THE SUPPLIERS MAKE ANY REPRESENTATIONS OR WARRANTIES, EITHER EXPRESSED OR IMPLIED, WITH RESPECT TO THE DISKS OR THE PROGRAMS, INCLUDING BUT NOT LIMITED TO, THE QUALITY, PERFORMANCE, MERCHANTABILITY, OR FITNESS FOR A PARTICULAR PURPOSE OF THE DISKS OR THE PROGRAMS. IN NO EVENT SHALL SOFTECH MULTIMEDIA, INC. OR THE SUPPLIERS BE LIABLE FOR DIRECT, INDIRECT, SPECIAL, INCIDENTAL, OR CONSEQUENTIAL DAMAGES ARISING OUT THE USE OF OR INABILITY TO USE THE DISKS OR PROGRAMS FOR ANY LOSS OR DAMAGE OF ANY NATURE CAUSED TO ANY PERSON OR PROPERTY AS A RESULT OF THE USE OF THE DISKS OR THE PROGRAMS, EVEN IF SOFTECH MULTIMEDIA, INC. OR THE SUPPLIERS HAVE BEEN SPECIFICALLY ADVISED OF THE POSSIBILITY OF SUCH DAMAGES. NEITHER SOFTECH MULTIMEDIA, INC. NOR THE SUPPLIERS ARE RESPONSIBLE FOR ANY COSTS INCLUDING, BUT NOT LIMITED TO, THOSE INCURRED AS A RESULT OF LOST PROFITS OR REVENUE, LOSS OF USE OF THE DISKS OR THE PROGRAMS, LOSS OF DATA, THE COSTS OF RECOVERING SOFTWARE OR DATA, OR THIRD PARTY CLAIMS. IN NO EVENT WILL SOFTECH MULTIMEDIA, INC. OR THE SUPPLIERS LIABILITY FOR ANY DAMAGES TO YOU OR ANY OTHER PARTY EVER EXCEED THE PRICE OF THE SOFTWARE. NO SALES PERSON OR OTHER REPRESENTATIVE OF ANY PARTY INVOLVED IN DISTRIBUTION OF THE DISKS IS AUTHORIZED TO MAKE ANY MODIFICATIONS OR ADDITIONS TO THIS LIMITED WARRANTY.

Some states do not allow the exclusion or limitation of implied warranties or limitation of liability for incidental or consequential damages, so the above limitation or exclusion may not apply to you.

SofTech Multimedia, Inc. retains all rights not expressly granted. Nothing in this license constitutes a waiver of the rights of SofTech Multimedia, Inc. under the U.S. Copyright Act or any other Federal or State law, international treaty, or foreign law.



Credits and Contributions

We would like to thank the following individuals for their help and expertise in getting this product together. Without their contributions this product would not have been possible:



Daryl Pietrocarlo- For his constant devotion as the senior software engineer and lead programmer and implementing new and challenging ideas.



Robert H. Mowery III- Making numerous revisions, development suggestions, the newly revised help, and marketing efforts.



Sten McKenzie- The great job with our Piano Professor(tm) Logo and for the Main Menu graphics.



Fred Costello- For reviewing the product and providing his music expertise, advice, and guidance.



Edith Lawson- For her devotion in writing the users manual and other behind the scene efforts.



Todd Foster- For his art skills in developing the registration control.



Melissa Rados- For her help and flair with the red pen in correcting our mistakes in all our documentation and the other behind the scenes efforts.



Kevin Brinsmaid- for his dedication to developing a full proof installation and the other behind the scenes efforts.

We use **INSTALLShield** to build all of our installation programs and thank the people at Stirling Technologies, Inc. for all their help. Stirling has made a very fine product and we recommend **INSTALLShield** to anyone producing software. **INSTALLShield** has made our lives easier by providing a complete setup for building installation programs and hopefully makes your life easier by providing a simple and intuitive means of getting your software up and running. Stirling Technologies, Inc. may be reached at (800) 374-4353.



About SofTech Multimedia, Inc.

You are probably wondering a little about our company and the history of our company. We are a small, privately owned software development and consulting company. We have been developing applications for clients on a customized basis for about two years now. Our team of programming experience dates back about 10 years. We are in no way a large software house, but do hope to grow with your continued support. We are hoping to continue expanding our product lines and offering you quality software and low cost. We have made a commitment to produce software and sell it for less than \$25.00. We feel that properly engineered software products should not cost above that price range. Most of today's commercial applications are priced ridiculously high due to the large overhead involved in the marketing and advertising. We believe in the shareware concept and hope that you do too. Shareware allows programmers such as ourselves to bring quality products to you at the low costs simply because there is no overhead in advertising and marketing. Thus we can spend more of the money on hiring more talent in the areas of art and programming. We are members of two trade organizations that also believe in the shareware concept. The organizations are STAR and ESC. These trade organizations help us to help you through their efforts in promoting the shareware concept.

SofTech Multimediass mission is to help usher in the Multimedia technologies in the professional, educational, and entertainment areas. We are achieving these goals by consulting and developing software for other companies that will be marketed by those companies and developing titles under our own label.

We do provide custom programming services and consulting services both locally, nationally, and internationally. We have consulted to small business and fortune 500 companies. Should you be interested in having software developed please feel free to contact us. If you have any suggestions for future product enhancements, new ideas, or anything else that we may be able to help with, please feel free to drop us a line.



Authors Note

I am writing this section in an attempt to explain in a non-technical way the reason why I wrote this piece of software, and how I think it can help you learn to play the piano.

When I was younger I took piano lessons for approximately 3 months. During this period I was taught to play scales, scales and even more scales. I was then taught to play a few songs that were not very interesting as far as I was concerned. Shortly afterward, my piano lessons ceased, but my interest and admiration for those that could play music (especially on the piano) increased more and more.

During the end of my college years, I was fortunate enough to cross paths with a friend of mine who could play the piano exceptionally well. He showed me how to play a few songs that I actually recognized, one of which was the beginning of Fur Elise by Ludwig Van Beethoven. I was hooked. The catch was that in order to play the song I would have to either drive my friend crazy with nagging questions or learn how to read music. Obviously, I took the latter path.

I went to a music store and bought the sheet music to Fur Elise. The problem was that the only note I could recognize in the sheet music and actually find on the piano was middle C. Armed with this knowledge, I started counting up or down from middle C to figure out the notes I didn't know, and quickly forgot the next time I saw them in the music. Attempting to make my fingers play the keys was one problem that I knew could be overcome with practice, but I figured that there had to be a better way to teach myself how to recognize notes. Herein lies the beginning of the *Piano Professor*.

I started with an extremely simple DOS based program that made notes randomly hop around on the staves without giving the note name. The only way to reveal the name of note was to press a special key on the computer keyboard. So, I would guess the name of the note I saw in my head and use the computer as the confirmation. If I didn't know the name, the computer had the answer! I could sit at my computer and teach myself to read music. Each time I sat down and used the program, I would become more and more proficient at guessing the notes. I noticed a great improvement in my playing because I was no longer trying to figure out the note while trying to play it. Now I could concentrate solely on making my fingers play the note. The *Note Tutor* is a representation of this first program, albeit a lot more elegant. Adding the functionality to plug in a MIDI capable keyboard was almost left out of the first version, but after seeing it work, I just couldn't leave it out.

As my playing became better I found (as did many other musicians) that I could pick up a piece of popular music, play the melody with my right hand and play the guitar chords shown above the music with my left hand. This is easier than attempting to read and play all the notes usually required in the bass with your left hand. Once you know a chord, it becomes a position rather than 3 or 4 notes. Even though there is a theory behind the creation of chords, I could not always remember the theory or I just wasn't sure if what I was playing was correct. So I wrote the *Chord Encyclopedia*, which includes most of the major chords found in music, and I refer to it often.

Name that Note was written because I wasn't born with the gift of being able to name a note simply by hearing the sound. I wrote this screen to help those of us who would like to get better at being able to recognize notes just by the sound. I think this screen has already helped

me, I hope it can help you.

The *Key Signature* screen will help you to recognize the different keys that music is written in. By knowing what key a piece of music is in, playing along with music or playing by ear definitely comes easier.

The *Keyboard* screen was written to guide those that have never had any real experience with a piano, and hopefully, will be enough to get you started with the *Piano Professor*.

If you have read this far, I am grateful. I hope that this program can be of some use to you or someone you know. I wrote it because I love to play the piano and would like to take some of the fear out of learning to play it. Playing the piano does not come easy, you still have to practice. I am by no means an expert in the area, most are better than I. For those who can play the piano, I hope this proves a useful tool. For those just learning, it is my desire that the *Piano Professor* can help you to learn faster and ease the discouragement that can be accompanied when learning to play. Enjoy.

Daryl Pietrocarlo -- Rochester, New York USA

