



# The Sound-Trecker V2.2: User Manual

07/03/93

Copyright © 1991-1994 by

Frank Seide • Wirichsbongardstr. 43 • D-52062 Aachen • Germany

## Table of Contents

<b>1</b>	<b>Introduction</b>	<b>2</b>
<b>2</b>	<b>Basic Operation</b>	<b>5</b>
2.1	Starting the Sound-Trecker	5
2.2	Screen Display	5
2.3	Playing a song	6
2.4	The Control Buttons	6
<b>3</b>	<b>Extended View</b>	<b>8</b>
3.1	The Display	8
3.2	The Mixing Console	9
3.3	Total Volume	10
3.4	Play Back Options	10
<b>4</b>	<b>Compiling Programs of Music</b>	<b>12</b>
4.1	Operations in the Song List	12
4.2	Loading and Saving a Song List	13
<b>5</b>	<b>Other Functions</b>	<b>15</b>
5.1	Detailed Description of the Play Back Options	15
5.3	Saving the Settings	17
5.4	Special Functions	17
<b>Appendix A: Transferring '.MOD' files to Your Mac</b>		<b>20</b>
A.1	Bulletin Boards	20
A.2	Transferring from PC Disks	20
A.3	Altering the File Type	20
<b>Appendix B: Technical Details</b>		<b>22</b>
B.1	What are '.MOD' files ???	22
B.2	Mixing the Sound Channels	22
B.3	Sampling Rate Conversion	23

Many thanks to Jan Maas of SoftWerk Hamburg and to Marc Holstein for their extensive tests, critical remarks, and their encouraged assistance. Thanks to Olaf Höhmann for the idea and for supplying an Amiga SoundTracker routine, thanks to Mr. Jonathan Cloud of Timebox, Inc. for reviewing the V1.0 documentation. Many thanks to Jamal Hannah for tons of information, intense testing, and everything else I forgot.



# ***The Sound-Trecker V2.2: User Manual***

## **1 Introduction**

Discover the musical talents sleeping in your Macintosh, and experience a whole new world of music with the Sound-Trecker V2.2! With the Sound-Trecker, you can listen to the huge library of songs stored in the platform-independent '.MOD' format, in a brilliant quality with a crystal clear sound!


The Sound-Trecker has a intuitive user interface, that you can use immediately, if you have ever used a CD player before. Compile your favorite songs to whole programs of music, which can then be played back in sequentially or randomly. Use the mixing console to mix the sound channels individually. Place each single channel at arbitrary positions in the stereo triangle. Or at the “surround” position, in which the sound will appear to come from everywhere around you, especially, if your HiFi set contains one of the famous surround processors (due to the surround capabilities, someone called the Sound-Trecker “Surround-Trecker”).

If you are interested in the principles of digital audio processing, you can experiment with several signal processing parameters. Find out, how the quality of sound is affected, e.g., by the sampling rate or the type of sound filtering. *See* the sound on the display as an oscillogram, or as a realtime spectrum (either as a line spectrum, as you will find on a professional spectrum analyzer, or as a band spectrum, like that on your equalizer).

The Sound-Trecker fully utilizes the multitasking capabilities of System 7. Music will continue even if you switch the Sound-Trecker in the background, so you can work with your Macintosh while listening to '.MOD' music. Now it will be even more fun to use your favorite computer! Playing back music in the background requires, depending on the sound quality and your Mac's power, between 10% (Mac Quadra, cache on) and 76% (Mac LC in best quality) of the CPU time.

The Sound-Trecker runs on any Macintosh with a M68020 processor or higher, or on the PowerBook, the Macintosh Portable, and on the new Macintosh “av” and “Power Macintosh” series. By using the “Sound-Trecker PowerPlug”, Sound-Trecker can be made run more than 10 times faster on a Power Macintosh. At least System 6.0.7 is required, System 7 is preferred.

## **Balloon-Help**

Sound-Trecker V2.2 uses “Balloon Help” of System 7. Switch Balloon Help on or off with the help menu (-Symbol). To get help about an object, switch Balloon Help on and simply move the mouse pointer over the object. A help balloon will appear and show information about the object.



# ***The Sound-Trecker V2.2: User Manual***

## **'MOD' files**

The '.MOD' file format is a compact, platform independent file format for storing songs. This format was introduced by the program “SoundTracker” written for computers of the Commodore-Amiga family. In addition to several Amiga versions, implementations of '.MOD' file players are available for the Atari-ST/TT family, PC/AT-compatibles, Acorn Archimedes, Apple IIgs, and even for UNIX workstations, e.g. SUN. The Sound-Trecker makes the whole '.MOD' music library accessible to Macintosh users.

With the '.MOD' format, many minutes of music can be stored in an extremely space saving way, usually requiring less than 150K. For example, the famous “Axel F.”-MOD takes up only 114K of disk space at a total playing time of over 10 minutes. A normal Macintosh sound file of 114K could store only about 5 seconds of sound (22 kHz, 8 bit, mono, no compression)! The gain is obtained by storing the *notes* of a song rather than the sampled song directly. To play such a song, the Sound-Trecker simulates a synthesizer. The sound synthesis is based on digitized instruments and thus has a very high quality.

The music files are often called “Modules” or '.MOD' files; we will call them simply “songs”. During the last years, many excellent '.MOD' songs have been created. Usually, they are in the *public domain* and available through bulletin boards, for example.

When the Sound-Trecker V1.0 was published in 1992, it used to be difficult to get '.MOD' files on Macintosh formatted disks, because at that time, the '.MOD' format was completely unknown in the Macintosh world. The files had to be transferred to the Mac, i.e. via telephone with a MODEM from a non-Macintosh bulletin board. Now, this has changed thoroughly: hundreds of '.MOD' files are available on Macintosh disks, on the famous public-domain collections and CDs, and through many Macintosh user groups.

## **Other music file formats**

Sound-Trecker V2.0 introduced the Amiga Oktalyzer format to the Macintosh world, which supports up to 8 voices, and an extended '.MOD' format permitting up to 32 polyphonic voices. With Sound-Trecker V2.2, the famous “MED/OctaMED” format is also supported. A new plug-in concept permits adding new file formats to Sound-Trecker V2.2 by only copying a short file.



# ***The Sound-Trecker V2.2: User Manual***

## **Plugs**

Sound-Trecker's capabilities can be enhanced with so-called plugs. Plugs are external files which are loaded by Sound-Trecker ("plugged in") at startup. Sound-Trecker can be easily extended by adding new plugs. The typical size of a plug is about 5K.



# ***The Sound-Trecker V2.2: User Manual***

To be in effect, the plugs must be stored in the Sound-Trecker folder, or in a folder named “Sound-Trecker Plugs”. The “Sound-Trecker Plugs” folder itself can be put in the Sound-Trecker folder, the system extensions folder, or the preferences folder.

To install a new plug-in converter, just copy it into the “Sound-Trecker Plugs” folder and restart Sound-Trecker.

Plugs can contain different extensions to Sound-Trecker:

- music file converters (Sound-Trecker's capability of reading Oktalyzer and MED/OctaMED files is realized with plugs)
- RISC code to speed up Sound-Trecker on non 68k machines (currently available for Power Macintosh)
- a new version of the Sound-Trecker music playing code
- instrument kits (in future versions)

## **Structure of this manual**

In the following chapters, basic operation (chapter 2) and the functions of the extended view (chapter 3) are covered. Chapter 4 describes how to compile programs of music from songs. All remaining functions are explained in chapter 5. Appendix A contains hints, where to get '.MOD' files for your Macintosh. Appendix B describes some technical detail and the basics of the '.MOD' file format.

Those who are interested in using the Sound-Trecker's music capabilities from within their own programs and presentations, please refer to “The Sound-Trecker V2.2: Programmer's Guide” and to “The Sound-Trecker V2.2: 'XFCN' Manual”.

## **Shareware**

“Sound-Trecker V2.2” is a shareware product. This means, you may copy it freely and try it out thoroughly. As soon as you decide to use the program, you are requested to send a modest amount of money.



## ***The Sound-Trecker V2.2: User Manual***

You will find the exact conditions for using the Sound-Trecker in the “Licence Agreement” file, that should have accompanied your copy of the Sound-Trecker. You might copy the Sound-Trecker application program freely to anyone, but only in its entire, including this user manual and the licence agreement file. This is to make sure anyone gets the chance to fully exploit the Sound-Trecker's capabilities. If the licence agreement file is missing, you are not permitted to use the program (sorry!).



## ***The Sound-Trecker V2.2: User Manual***

The programmer's manual, the sample source codes, and the code libraries, that you need for playing back '.MOD' files from within your own programs, should be copied along with the Sound-Trecker. If you did not get those files, I will send them to you, if you send me a disk, a self-addressed envelope, and the money for the postage.

If you have any questions, contact me via mail (please don't forget the return postage) or via e-mail at `seide@pfa.philips.de`. Please: always give your e-mail address if you have one.

### **Compatibility**

Sound-Trecker should be compatible with all software written according to the rules given in "Inside Macintosh". Problems may arise, however, when it is used together with older software which uses the "Sound Driver" instead of the new "Sound Manager". As soon as a program uses the old Sound Driver, the Sound Manager switches into compatibility mode and stops *all* sound output generated through Sound Manager calls, including Sound-Trecker's. When you quit the old program, the Sound Manager immediately restarts sound. I.e., old versions of the "SoundMaster" may cause the Finder to issue a Sound Driver call, and you usually can't quit the Finder!

One special problem arises in conjunction with the another '.MOD' player, "Player Pro" by Antoine Rosset and Mike Venturi. In some versions, e.g. 4.15, each '.MOD' file is converted to a "Player Pro" file without warning whenever you open it. Such a file can be recognized from the changed icon. Although the Sound-Trecker can still open such a file, double clicking the icon will now automatically start "Player Pro". The modification can be undone only with special tools like "ResEdit". So, only open *copies* of '.MOD' files with "Player Pro".




# The Sound-Trecker V2.2: User Manual

## 2 Basic Operation

In this chapter, basic operation of the Sound-Trecker is described, e.g., how to load and play songs, and how to use the control buttons.

### 2.1 Starting the Sound-Trecker

Sound-Trecker can be started by double clicking on the program icon () , just like any other Macintosh application. The symbol is a tractor (German “Trecker”) with notes coming out of its exhaust pipe. Alternatively, the Sound-Trecker may be started by selecting one or more sound tracks in the Finder, and opening them by double clicking. Under System 7, '.MOD' files may be dragged and dropped onto the Sound-Trecker icon. Sound-Trecker may also be started by opening a song list (see chapter 4).

### 2.2 Screen Display

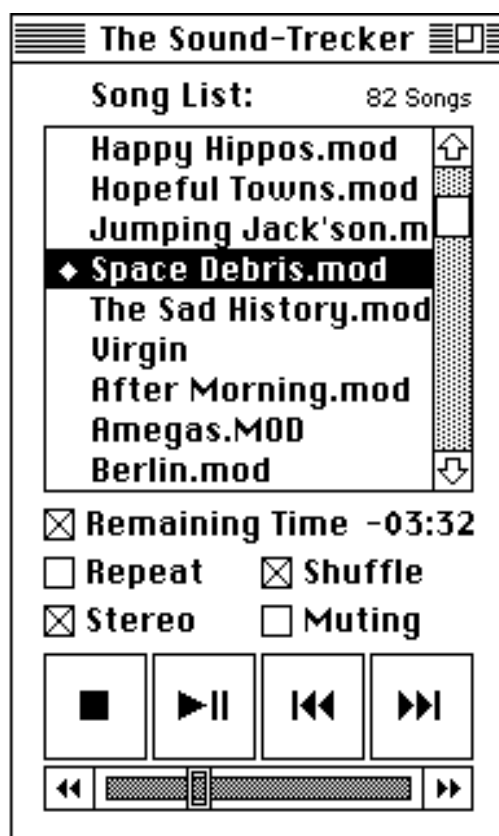


Figure 2.1: collapsed view of the Sound-Trecker





## ***The Sound-Trecker V2.2: User Manual***

Figure 2.1 shows the “collapsed” view of the Sound-Trecker. Clicking the “zoom box” in the upper right corner will activate the extended view. Sound-Trecker usually starts up with the extended view; in this chapter, however, only the functions of the collapsed view are discussed.



# *The Sound-Trecker V2.2: User Manual*

Above the playing time display you find the **song list**. In the song list, you can compile your own individual selection of songs (as shown in chapter 4). The song being played is marked by a preceding 8 symbol, in the above example the song “Space Debris”. The slider at the bottom shows the current position within the song.

At the bottom, there are four large and two small buttons to control the playing back of songs in a way similar to your CD player.

## 2.3 Playing a song

To play a song, you must first put it into the song list. To do this, select the menu command “Open...” in the “File” menu (shortcut:  $\mathbb{H}$ -O, i.e., hold down the  $\mathbb{H}$  key and press O). After choosing “Open...”, you will see a standard file dialog box, in which you should, as usual, choose the track to play.

When you open a song, it will be appended to the song list. If nothing is being played, the new song will be loaded and started automatically. To start a song that is already in the song list, just double click on it.

By the way, in addition to actual '.MOD' files, the file dialog shows ordinary text files, because after downloading a '.MOD' file from a bulletin board or copying it from a PC diskette, the Macintosh often regards those files formally as text files, although they are in fact '.MOD' files (see also appendix A). When such a file is opened, the Sound-Trecker program asks automatically, whether the file type should be set correctly. Normally you will accept this. If you open a *real* text file by mistake, the Sound-Trecker will notice this and reject the file as being no '.MOD' file.

## 2.4 The Control Buttons

The control buttons at the bottom of the window are behaving just as the respective keys on your CD player. Their functions are:



**Play / Pause:** to play a song, select it in the song list and click here (if the song list is empty, the “Open...” command will be executed automatically). If a song is currently being played, it will be paused. Clicking again resumes playing;



**Stop:** clicking here fades out and stops the song which is currently being played. It will then be unloaded from memory (but not from the song list);



# ***The Sound-Trecker V2.2: User Manual***



**Next Song:** click here to start the next song in the song list. If “Shuffle” is active (see below), a song will be randomly selected;




# The Sound-Trecker V2.2: User Manual



**Back:** clicking here once will restart the current song. Clicking twice or within the first second of the song, the *previous* song in the song list will be started (unless “Shuffle” is active);



**Fast Forward / Rewind:** hold down these keys to “wind” forward or back with high speed (speed is even higher, if the option key () is also held down).

The large buttons can also be activated by menu commands in the “Control” menu. This provides the following keyboard equivalents: Press  $\mathbb{H}$ - for the “Stop” button;  $\mathbb{H}$ -P for “Play / Pause”,  $\mathbb{H}$ -+ to start the “Next Song”, and  $\mathbb{H}$ -- (  $\mathbb{H}$ -key and minus sign) for “Back”.

## Moving to an Arbitrary Position

You can use the “Fast Forward” and “Rewind” buttons to move to a certain position in a song. However, this might take a lot of time. With the slider between those two buttons, you can move to any arbitrary position directly. The slider behaves like in QuickTime™ movies. Either grab the slider with the mouse pointer and *drag* it to the desired position (as shown in figure 2.2), or simply *click* on the desired position.



Figure 2.2: Dragging the slider to move to an arbitrary position

## More Control Functions

**Remaining Time ( $\mathbb{H}$ -T):** here, you can choose between the display of the current playing time that has elapsed since the beginning of the song, and the remaining playing time to the end of the song. The remaining time is displayed as a negative number (as in figure 2.1).

**Repeat ( $\mathbb{H}$ -R):** when repeat is activated, the song list will automatically be played over again, when the last song has finished.

**Shuffle:** with the shuffle option activated, the songs in the song list will be played in random order rather than sequentially.

**Stereo ( $\mathbb{H}$ -M):** if your Mac has a stereo sound output, you can choose between stereo and mono. Switching the mode might cause a short pause (or click) in the sound.

Commodore-Amiga is a registered trademark of Commodore-Amiga, Inc.; Atari ST and Atari TT are a registered trademark of Atari Computers; Acorn Archimedes is a registered trademark of Acorn Electronics Ltd.; Apple, Apple IIgs, Macintosh, and QuickTime are registered trademarks of Apple Computer, Inc.; Finder is a trademark of Apple Computer, Inc.; DOS-2-DOS is a registered trademark of Central Coast Software; AccessPC is a registered trademark of Insignia Solutions; MS-DOS is a registered trademark of Microsoft Corporation; SUN is a registered trademark of SUN Microsystems, UNIX is a registered trademark of AT&T Corporation, Think C is a registered trademark of Symantec Corporation. You may not conclude from the absence of a special trademark indication that a name may be used freely. Although all efforts have been made to ensure the quality of the program and the accuracy of this documentation, the author assumes no responsibility for direct, indirect, special, incidental or consequential damages resulting from any errors contained in this text or in the program, even if advised of the possibility of such damages.



# ***The Sound-Trecker V2.2: User Manual***

**Muting:** click here to suppress sound output (i.e. set the volume to zero). Unlike the “Play / Pause” button, the song is *not* paused.



# The Sound-Trecker V2.2: User Manual

## 3 Extended View

Sound-Trecker usually starts up with an extended view of the window. The extended and collapsed view can be toggled by clicking on the “zoom box”.

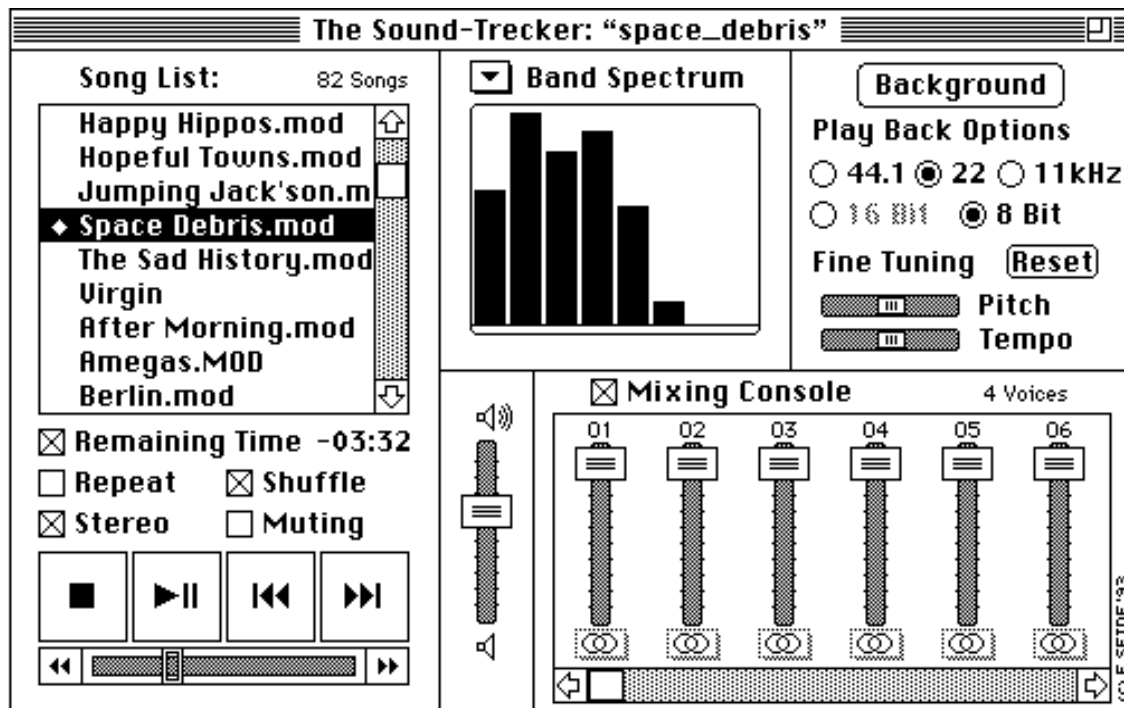



Figure 3.1: extended view of the Sound-Trecker

Die extended view contains four additional areas: the *display*, the *mixing console*, the *total volume* control, and the *play back options* field.

### 3.1 The Display

With the Sound-Trecker, you can not only listen to songs, you can also “watch” them: one of four graphical representations of the sound signal can be shown in the displa. Clicking on the  symbol and holding down the mouse button will open a pop-up menu to choose the desired kind of display or to switch it off, respectively. Figure 3.2 shows an example for each of the four graphical representations.

**Oscillogram:** the audio signal is shown over time. The signal shown in figure 3.2a appears to be periodic (at a period of about 70% of the display width).



## ***The Sound-Trecker V2.2: User Manual***

**Channel volumes:** the volumes (signal power) of each single sound channel (voice) ist shown. Obviously, the song in figure 3.2b has four voices.



# The Sound-Trecker V2.2: User Manual

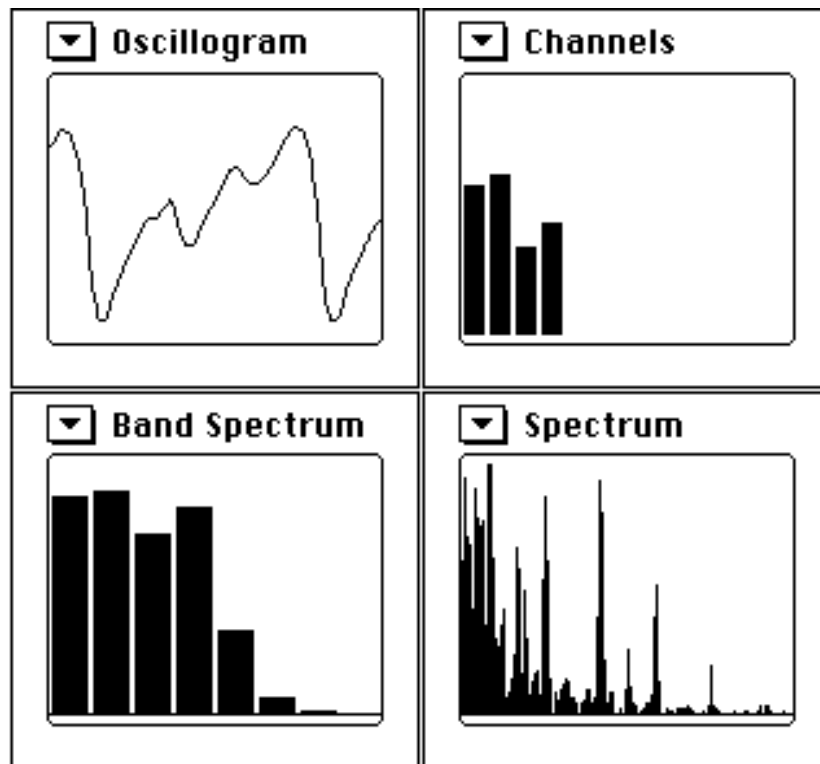


Figure 3.2: the four graphical representations of the sound signal: (a) oscillogram, (b) channel volumes, (c) equalizer-style band-spectrum, (d) real frequency spectrum

**Equalizer-style band-spectrum:** this is a spectrum display which is often found on equalizers. Each bar shows the volume (power) of a certian frequency range (or frequency band). A typical property of audio signal can be seen in the example of figure 3.2c: the power decreases from the basses (on the left) towards the high frequencies (right hand side).

**Real frequency spectrum:** the audio signal is shown over a linear frequency axis rather than over the time axis. The longest line in figure 3.2d represents the base frequency of a tone, the long lines to the right are the odd harmonics. The even harmonics are also present, but to a smaller extent.

## 3.2 The Mixing Console

With the mixing console, you can remix the voices (or sound channels) of a song. For each voice, you can control the volume and, on Macintoshes with a stereo output, the position in the stereo triangle individually. For example, you can listen to a single voice by turning all others off.






## ***The Sound-Trecker V2.2: User Manual***

The mixing console can be deactivated. In that case, the volume and stereo controls are ignored. Instead, the default settings stored with the song in the '.MOD' files will be used.



## ***The Sound-Trecker V2.2: User Manual***

To change the stereo position, move the mouse to the corresponding stereo symbol (  ) and hold the mouse button down. A pop-up menu as shown in figure 3.3 will open. You can select any stereo position between the left (L) and the right (R) speaker. The back speaker (S) denotes the “surround” position, in which the listener has the impression of being surrounded by sound. The surround-effect is most impressive, when the audio signal is played back on a HiFi set containing a surround processor.

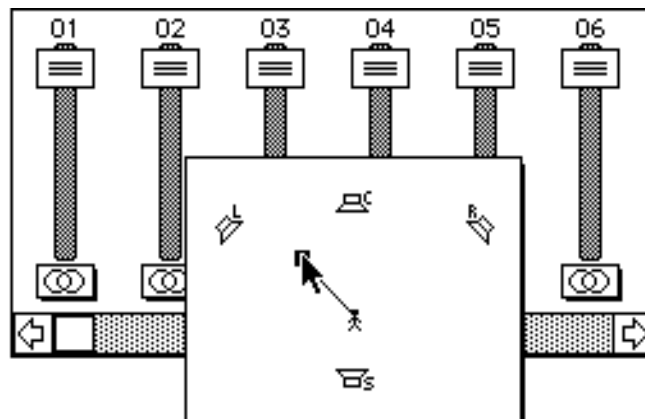


Figure 3.3: Pop-up menu to choose the stereo position. The letters denote the extreme positions left (L) and right (R), the center position (C), and the surround-effekt (S)

### **3.3 Total Volume**

Choose the total volume with this control. Normally, you should set the total volume to around 50% (as in figure 3.1). A greater value could lead to numerical overflow, resulting in clipping and a significant loss of quality.

On the other hand, with a low volume, the dynamic range will not be used optimally any more, especially if your Mac is not capable of generating 16 bit sound. Then, the noise distortions will become unnecessarily dominant. If you choose a low total volume and turn your HiFi set up accordingly, and you will notice an increased noise level.

### **3.4 Play Back Options**

In this field, you can set the most important play back options (you will find more options in the “Options” menu). You can also change the tempo and pitch independently.



## ***The Sound-Trecker V2.2: User Manual***

The background button is only available in System 7 or later. It has the same functionality as the menu command “Background” in the “Extras” menu: to switch the Sound-Trecker into the background to listen to '.MOD' files while working on with other programs. For details, see the description of the “Extras” menu in chapter 5.

### **Sampling Rate**

Here you can select the output sampling rate. You can choose between 11 and 22 (Mac) and 44.1 kHz (CD) here. The same rates, as well as 32 and 48 kHz (common in digital recording facilities), can be selected in the “Options” menu. For a detailed description of the sampling rates, see the description of the play back options in chapter 5.

### **Accuracy**

Here you can choose the accuracy (quantization) used when computing the audio signal. Most current Macs only support 8 bit signals (standard Mac quality). 16 bit signals (CD quality) are available only on Macs with 16 bit output, like “av” Macs and, hopefully, PowerPC Macs. See also chapter 5.

### **Fine Tuning**

You can use the two fine tuning sliders to adjust the playing **tempo** and **pitch** *independently* by about  $\pm 50\%$ . Click the reset button to revert to the standard settings of the two sliders.



# The Sound-Trecker V2.2: User Manual

## 4 Compiling Programs of Music

In the song list, you can compile your favorite songs to programs of music. Song lists can be saved. Optionally, you can save the current settings like sampling rate, mon / stereo, total volume etc. with them.

### 4.1 Operations in the Song List

#### Adding a Song to the Song List

As described in section 3.2, a song is added to the song list by selecting the “Open...” command in the “File” menu (short cut: ⌘-O). The dialog box has been extended by the “Add” button, see figure 4.1. Use “Add” instead of “Open” to add the selected song to the song list *without* leaving the dialog box. This way, you can add more than one song to the song list very quickly. You can also use the “Add” button on folders and song list files; in this case, the whole contents of the folder or the song list file, respectively, will be added to the song list.

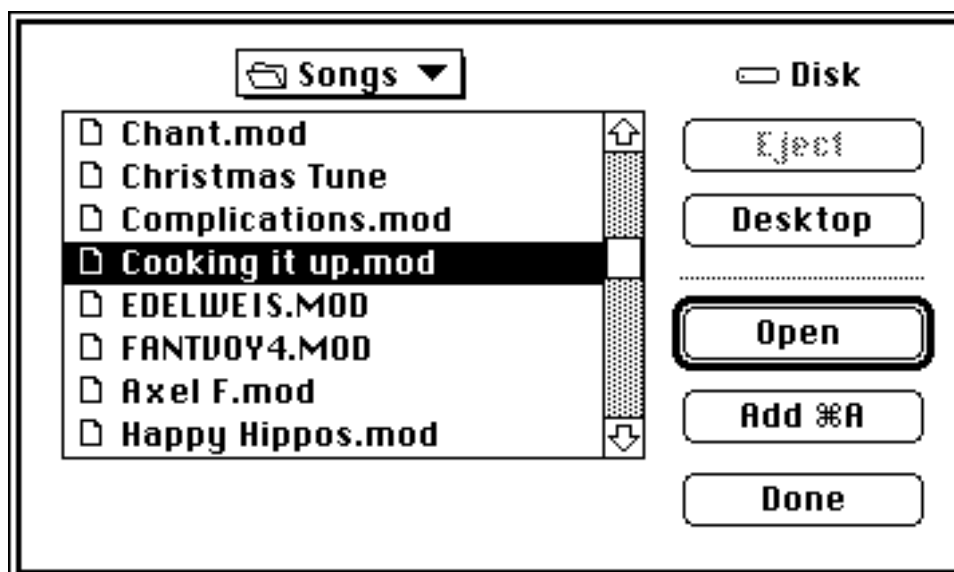


Figure 4.1: The dialog box extended by the “Add” button

Alternatively, you can drag and drop '.MOD' files onto the Sound-Trecker icon in the Finder. With System 7 or higher, this works even if the Sound-Trecker is already running. However, you should avoid dragging files with a wrong file type onto the Sound-Trecker icon, especially '.MOD' files, whose file type has not been corrected, yet (see section 2.3).



# The Sound-Trecker V2.2: User Manual

## Seclecting a Song

To select a song in the song list, simply click on it. The name of the selected song will be highlighted, as shown in figure 4.2 (the selected song is “Happy Hippos”).

## Removing an Item from the Song List

To remove a song from the song list, first select it. Then press the delete key (usually labelled with “←”). Of course, the song is *not* removed from the Mac's disk, only from the song list.

## Changing the Sequence of Items in the Song List

To move a song in the song list to a new position, simply drag and drop it at the desired position. While the item is being dragged, a dotted frame indicates the new position, see figure 4.2.



Figure 4.2: Dragging a song in the song list

## Duplicating an Item

If you want a song to appear more than once in the song list, you can duplicate the list entry with the menu command “Duplicate” in the “Edit” menu (shortcut ⌘-D). A copy of the name will appear just below the original entry. Now drag and drop it to the desired position.

## 4.2 Loading and Saving a Song List

The current song list can be *saved* with the menu commands “Save Song List” and “Save Song List As...”. As usual, the file dialog box will appear. The dialog box has been extended (see figure 4.3): you can choose, whether the current settings like sampling rate, mono / stereo, shuffle etc. should be saved along with the song list, or not. On loading a song list, those settings will be restored automatically.



# ***The Sound-Trecker V2.2: User Manual***

To *load* a song list, use the menu command “Load Song List” (⌘-L). You can also use “Open...” (⌘-O). In this case, the first song in the song list will be loaded and started automatically.



## ***The Sound-Trecker V2.2: User Manual***

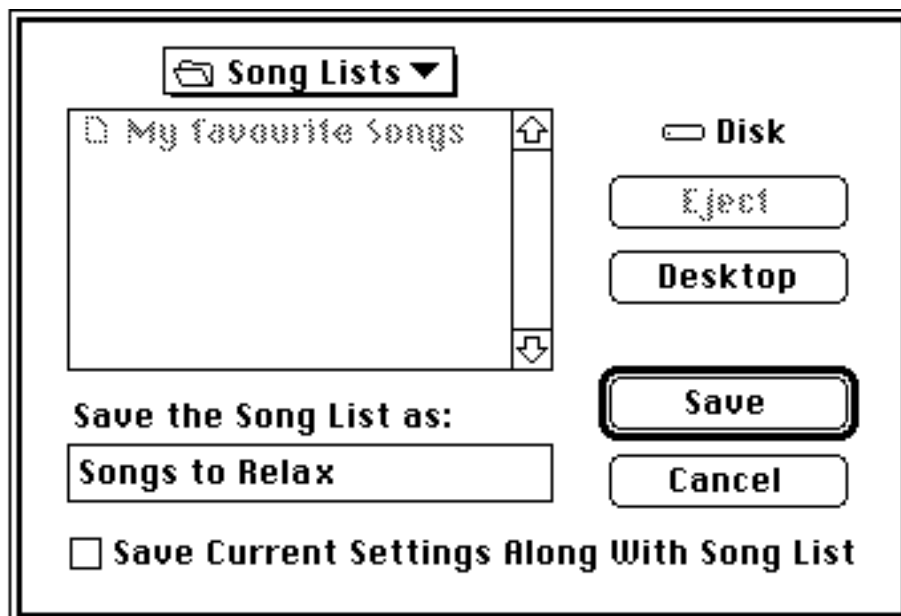


Figure 4.3: Extended file dialog box for saving a song list

You can also start the Sound-Trecker by double-clicking a song list file in the Finder. The Sound-Trecker will read the song list and, if stored along with it in the file, the settings, and play the song list, starting with the first song. Under System 7, you may place a song list (or an alias) in the “Startup items” folder (in the System folder). This will start up the Sound-Trecker in the background every time you boot or restart your Macintosh.



# The Sound-Trecker V2.2: User Manual

## 5 Other Functions

In this chapter, all functions that have not yet been covered thoroughly or not at all are described.

### 5.1 Detailed Description of the Play Back Options

#### Stereo / Surround Effects

With the **stereo** button, you can choose between mono and stereo sound, if your machine is equipped with a stereo output. Alternatively, you can use the menu command “Stereo” in the “Options” menu. The pop-up menus for selecting the stereo position can only be opened in stereo mode.

With V2.0, the Sound-Trecker has become capable of producing surround effects. Note that, if your HiFi set is set to mono, or if the distance between the two speakers is less than about 50 cm (20 inches), the two stereo channels could interfere with each other, leading to undesired side effects. That's why you can disable the generation of surround effects with the menu option “**Surround Effects**”.

#### Sound Filter

When playing back '.MOD' files using a HiFi set, you might notice some distortions. The Sound-Trecker can filter those distortions out. Use the menu option “**Realtime Sound Filter**” to switch the filter on and off. The realtime filter can be toggled at any time, and takes effect immediately.

However, with the realtime filter on, sound generation requires about three times the CPU time. On fast Macs, like the Quadras, you will hardly notice this additional computation time. However, on the slower machines, like the Mac LC, the performance might decrease significantly. To avoid this, you can perform a limited pre-filtering at load time, which doubles the memory required by the song. In most cases, the realtime filter can be omitted. Use the menu option “**Pre-Filter at Load Time**” to toggle the pre-filter. Since filtering is performed at load time, changing this option will take effect when the next song is loaded and started.

#### Sampling Rates

When digitizing a sound, it will be *sampled* at a certain rate, the *sampling rate* or *sampling frequency*. The chosen sampling rate determines the highest frequency component contained in the audio signal: it is identical to the half of the sampling frequency (in digital signal processing





## ***The Sound-Trecker V2.2: User Manual***

theory, this relation is called the *sampling theorem* or the *Nyquist theorem*). At a sampling rate of 11 kHz, the maximal frequency component is 5.5 kHz (a little more than on a standard phone



## ***The Sound-Trecker V2.2: User Manual***

line), while at 44.1 kHz, the frequencies up to 22 kHz are possible (the human ear is only sensitive up to about 20 kHz).

The required computation time is “proportional” to the sampling rate. For example, playing back at 22 kHz requires twice the CPU time than at 11 kHz. The optimal choice of the sampling rate depends on your Macintosh's speed and the quality of your HiFi set (if used). Please note, that sampling rates above 22 kHz can only be played back on Macintoshes equipped with a *Digital Signal Processor* (DSP), currently only on the Macs of the “av” series, and, hopefully, on the PowerPC Macs. The following list is intended to aid you in choosing a sampling rate suitable to your needs.

**11 kHz:** this is the *lowest sampling rate* possible. It requires the least CPU time, but the sound quality is only a little better than telephony. Usually, 11 kHz is suitable if you play back your '.MOD' files using the built-in speaker.

**22 kHz:** this is the *standard sampling rate* of the Macintosh and the highest one you can use on Macintosh models without a Digital Signal Processor (DSP). You should use 22 kHz when playing back over a HiFi set. The quality is slightly less than standard FM radio.

**32 kHz:** this sampling rate is common in *professional digital recording studios* and is also used for *digital satellite radio* (DSR). The quality is comparable with standard FM radio. For '.MOD' files composed on Commodore-Amiga computers, this is the optimal sampling rate, because the maximum sampling rate available on the Amiga is about 32 kHz. Note, that Macintosh models without a Digital Signal Processor cannot use this sampling rate; use 22 kHz instead.

**44.1 kHz:** this sampling rate is used by every *CD player* and by Philips' digital compact cassette (DCC). The rate was chosen to be just high enough to provide all frequencies that the human ear can hear. However, most '.MOD' files do not contain such high frequency components. When playing back in 8 bit mode, selecting 44.1 kHz could result in expanding the unavoidable noise distortion to a larger frequency range, without really improving the sound quality. On some '.MOD' files, the improvement is noticable. For 44.1 kHz, your Macintosh requires a Digital Signal Processor (DSP).

**48 kHz:** this is the standard rate for the *digital audio tape* (DAT). The remarks for 44.1 kHz also apply here.



# ***The Sound-Trecker V2.2: User Manual***

## **Accuracy**

On standard Macs, the Sound-Trecker produces digital audio data at a precision of 8 Bit. Each sample value must be represented by only 8 bits. This inaccuracy leads to an audible “hiss” called “quantization noise”. The intensity of those noise distortions is comparable with that found on a standard, analog compact cassette. Since the Macintosh models without a Digital Signal Processor are not capable of handling audio data with more than 8 bits, the noise distortions are unavoidable on those machines.



# ***The Sound-Trecker V2.2: User Manual***

At a precision of at least 16 bits, the inaccuracy is no more noticable to the human ear. That's why, on a CD music is stored at a precision of 16 bits. The hardware required for playing back 16 bit samples has been built into all Macintosh models equipped with a Digital Signal Processor (DSP), and, hopefully, on the PowerPC Macs. On those machines, 16 bit mode is set by default.

## **5.2 Control Options**

The order in which songs are played can be controlled with the following commands in the “Control” menu: “Repeat”, “Shuffle”, and “Loop-Suppression”.

**Repeat:** if active, the whole song list will be played over again, when the last song of the song list has finished.

**Shuffle:** if active, the songs in the song list will be played in a random order rather than sequentially.

**Loop-Suppression:** for some '.MOD' files, the end point has not been defined. They run into an endless loop, which repeats the same bars over and over again. If loop-suppression is activated, any song falling into an endless loop will be faded out and stopped immediately. Then, the Sound-Trecker will continue with the next song.

## **5.3 Saving the Settings**

You can save the current settings (sampling rate, total volume, mixing console settings etc.) as your *default settings* with the menu command “**Save Default Settings**” of the “Extras” menu. The settings will be saved in the file “Sound-Trecker-Settings” in the standard “Preferences” folder of System 7, which is located in the System folder.

Everytime the Sound-Trecker is started, it reads and restores these default settings. In case you have modified some options, you can restore your default settings at any time with the menu command “**Default Settings**”.

## **5.4 Special Functions**

In this section, four special menu commands are to be described, which have not been mentioned, yet, because they did not really fit into any of the sections above.



## ***The Sound-Trecker V2.2: User Manual***

**Record to File...** (“File” menu): with this menu command, you can “record” a '.MOD' song to a standard audio file, either as an 'AIFF' file or a standard Sytem 7 sound. The 'AIFF' format is Apple's standard interchange format for audio data; 'AIFF' files can be read by any of the major



## The Sound-Trecker V2.2: User Manual

sound or multimedia programs. System 7 sounds can be listened to directly from within the Finder by just double-clicking on them, if they are not too long.

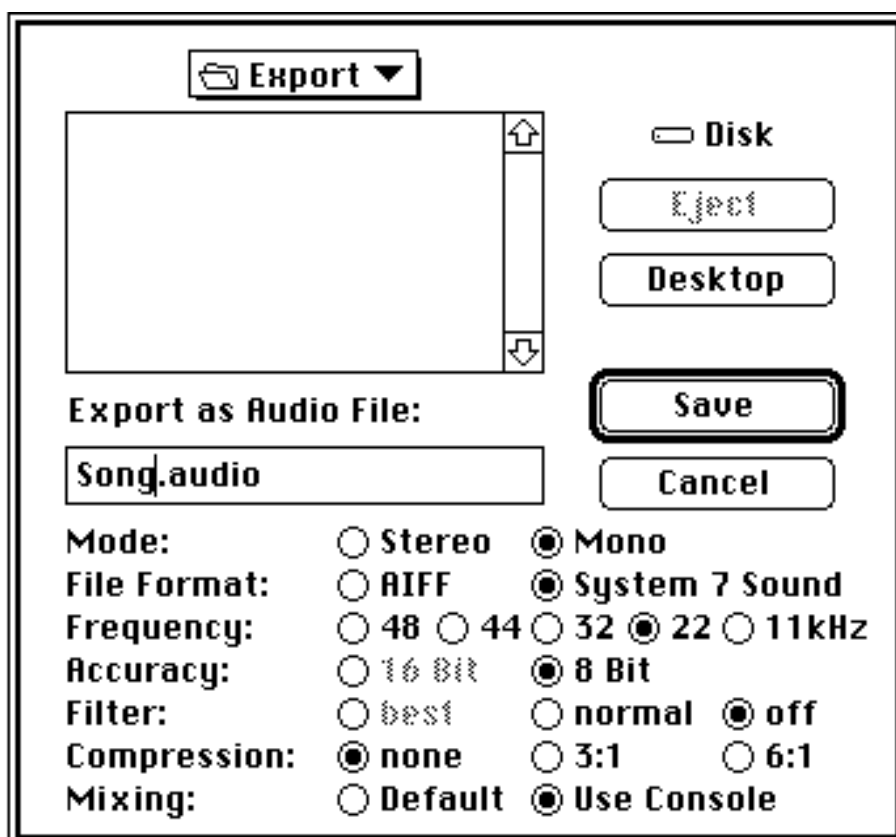



Figure 5.1: Extended file dialog box for recording a '.MOD' to an audio file

After selecting “Record to File...”, the extended file dialog box shown in figure 5.1 will appear. Here, you can change all audio-settings for the file to be recorded, independent of the normal settings that the Sound-Trecker uses for normal play back. Please note, that an audio file usually requires a lot of disk space. Recording at 22 kHz in stereo requires 44 kByte per second, which is more than 2.6 MByte per minute!

**Information...** (“Edit” menu): use this command to obtain information about the selected song in the song list. You can test-play the instruments of the song with the Macintosh keyboard, when no other song is currently being played. This effectively turns your Macintosh into a synthesizer! Figure 5.2 shows a typical information window.



# The Sound-Trecker V2.2: User Manual



Information about:  
Axel F.mod

Title: axel.f

File format: Amiga NoiseTracker

Time: 10:37

Positions: 83

BPM: 125

Voices: 4

Patterns: 33

Key: n/a

Author: n/a

Arranged by: n/a

Copyright: n/a

Comment: n/a

Instruments: 15

st-01:nice

st-01:synbrass

st-01:popsnare2

st-01:bassdrum2

st-01:dxtom

st-01:hihat2

st-01:soundtrack

st-01:blast

st-01:hallbrass

↑

↓

Instrument No. 11

Length: 9396

Bytes

Loop from

to

Volume: 46.5% (-6 dB)

Position: -

OK

Figure 5.2: Information window

**Speed Measurement** (“Extras” menu): this command determines, how much processing time is currently used for sound generation. The result is expressed as a percentage.

**Background** (“Extras” menu): closes the Sound-Trecker window and activates one of the other open applications (for example, the Finder). The music will now be generated in the background, while you can work on with another application.

This function requires the multitasking capabilities of System 7, it is not available under system 6.0.7. Under system 6.0.7 you can send the Sound-Trecker to the background by clicking into a window of another application (or the Finder) while holding down the option key (⌥). The music will be played on.



# ***The Sound-Trecker V2.2: User Manual***

## **Appendix A: Transferring '.MOD' files to Your Mac**

'.MOD' files are widely available for the Macintosh. Those times, when you had to transfer every '.MOD' file from other computer worlds to the Mac, are fortunately over. Now you can get '.MOD' files in any major collection of public-domain software, at Macintosh clubs, in Mac Bulletin Board Systems, and certainly from other Macintosh users.

The following hints are intended for those occasions when you want to get '.MOD' files from non-Macintosh Bulletin Boards or from other computer worlds.

### **A.1 Bulletin Boards**

Many Bulletin Board Systems (BBSs) for the Macintosh already have sections for '.MOD' files. In non-Mac-BBSs, '.MOD' files are often found in the Amiga section (if present). Many BBSs also have special '.MOD' file sections. After downloading and, if necessary, unpacking, '.MOD' files can be played directly on the Macintosh by the Sound-Trecker.

### **A.2 Transferring from PC Disks**

If the '.MOD' file is stored on an accessible alien computer, the easiest way of transferring is to copy the file to a 3.5" MS-DOS-formatted diskette (720 kByte oder 1.4 MByte). These diskettes are used by all PC/AT compatibles as well as by Atari ST/TT computers; special conversion programs are not necessary.

The Amiga's native diskette format is different. However, part of the newer versions of the Amiga Workbench is a special filing-system for reading and writing MS-DOS disks. You could also use the commercial program "Dos-2-Dos" or the filing-systems "Cross-Dos" and "MSH" (shareware).

Once the '.MOD' file is available on a 3.5" MS-DOS diskette, the Macintosh can read it. A file conversion program to read DOS disks called "Apple File Exchange" is part of your system software. Alternatively, you can use the system extensions "AccessPC" by Insignia Solutions or Apple's "Macintosh PC Exchange".

### **A.3 Altering the File Type**

As opposed to the Macintosh, most other operating systems have no way of marking a file as a '.MOD' file. That's why the file types 'TEXT' or '????' are by default assigned to newly





## ***The Sound-Trecker V2.2: User Manual***

transferred '.MOD' files. You should not try to start such a '.MOD' file by double-clicking on it in the Finder, because TeachText will try to display the '.MOD' file as ASCII text. However, '.MOD' files *do not*



## ***The Sound-Trecker V2.2: User Manual***

*contain* ASCII text. Instead, you should start the Sound-Trecker and open the song using the menu command “Open...” from the “File” menu, as described in chapter 2. The file type and the file's icon will then be altered automatically.

If you use “AccessPC” to read '.MOD' files from a DOS disk, you can define an automatic type conversion in the “AccessPC” control panel. You just have to specify the MS-DOS extension “.MOD” and assign it the file type 'STrk' of the application “The Sound-Trecker V2.2”.



# ***The Sound-Trecker V2.2: User Manual***

## **Appendix B: Technical Details**

In this appendix, the basics of the '.MOD' file format are described, and how the Sound-Trecker works in principal. Those of you who want to use the Sound-Trecker's playing capabilities from within your own programs and presentations might want to refer to “The Sound-Trecker V2.2: Programmer's Guide” and to “The Sound-Trecker V2.2: 'XFCN' Manual”.

### **B.1 What are '.MOD' files !?!**

'.MOD' files do not contain simply digitized music. This would waste too much space on your hard disk. At a sampling rate of 22 kHz, digitizing sound directly would require 22 KByte per second, about 1.3 MByte per minute! Current compression schemes for reducing the immense amount of data usually can't “compress away” more than 50%.

When the Sound-Trecker plays a '.MOD' file, one half of the software can be imagined as a simulator of a polyphonic synthesizer, which is “played” by the other half of the software it. Thus, '.MOD' files contain two different kinds of data:

- data for the simulation of a synthesizer. These data are basically the digitized sounds of real instruments. Only one tone per instrument is stored, which can played back at different pitches (in the new extended '.MOD' file format introduced by the Sound-Trecker V2.0, multi-sample instruments are possible);
- the “notes” that are used to play the synthesizer. Compared to the instrument data, the note data use up only a small portion of the file. That's why even long songs are often shorter than 100 KByte, as long as they don't use too many instruments.

### **B.2 Mixing the Sound Channels**

The Sound-Trecker simulates a polyphonic synthesizer, i.e. it mixes digitized sound at different pitches and volumes together and sends them to the speaker and the headphone jack. A part of the system software, the “Sound Manager” of system 7 (also contained in system 6.0.7), can perform the same operation. Unfortunately, Apples Sound Manager requires that much processing time, that a Mac LC cannot play more than three channels at the same time. Music in '.MOD' files usually has *four* channels (the new version 3.0 of the Sound Manager, is a little faster now).



## ***The Sound-Trecker V2.2: User Manual***

Since each sound channel managed by the Sound Manager eats up unnecessarily much CPU time, the Sound-Trecker uses only *one* sound channel from the operating system with a constant sampling rate (which may be chosen between 11 and 48 kHz by the user). The Sound-Trecker does all the mixing itself and creates one common data stream. This completely prepared data



## ***The Sound-Trecker V2.2: User Manual***

stream is then handed over to the operating system. By using hand-optimized M680x0 assembly language, the processing time was reduced to approximately one third of the original. With the Sound-Trecker Sound System, even a Mac LC can play back up to 12 voices at the same time.

### **B.3 Sampling Rate Conversion**

Simulating a synthesizer is basically a simple task: first, capture the sound of the desired instrument by digitizing one tone at a certain pitch. To play the instrument at a different pitch, the sampled tone is simply played back at a different speed. Everyone has experienced this effect when playing an LP to be played at 33 rpm at 45 rpm instead. In digital signal processing, changing the speed means changing the sampling rate: *sampling rate conversion*. This process requires the most CPU time in the Sound-Trecker.

An example. Assume we have digitized a “C” from a piano at a sampling rate of 11 kHz. Now, if we want to play a piano “D”, the digitized “C” is to be played back at a slightly higher sampling rate, just like a tape recorder running a little too fast. The sampling rate has to be increased by  $2^{1/12}$  per semitone, which is about 5.946%. “D” is two semitones higher than “C”, so the output sampling rate has to be approximately  $11 \text{ kHz} \cdot 1.05946 \cdot 1.05946 \approx 12.347 \text{ kHz}$ .

So, how do we play back a sample at 12.347 Hz, although the Sound-Trecker generates its output using a fixed sampling rate (e.g. 22 kHz), instead of the desired 12.347 kHz? The problem is that we have sample values at every 12347th of a second, but we need sample values at every 22000th of a second. Thus, we need sample values at times for which we don't have sample values for. How do we get them?

A simple way of “estimating” the unknown sample values from the known ones is to use the closest one known (the “nearest neighbor”). This scheme is very quick, but it produces distortions that may be apparent with some instruments (because the “sampling theorem” mentioned in section 5.1 is violated). These distortions are called “aliasing distortions”.

To improve output quality, the aliasing distortions must be filtered out. The filter can be switched on with the menu option “Realtime Sound Filter” in the “Options” menu. Then, the unknown sample values are computed by linear interpolation from the left and right neighbor. The distortions are reduced significantly, although they don't disappear entirely. For this, the filter algorithm would be too complex to be performed on the current M680x0 Macs in realtime.

The new Macintosh models of the “av” series are equipped with a Digital Signal Processor (DSP), which are perfect for this filtering task. Future versions of the Sound-Trecker may use the DSP directly to significantly improve sound quality. Furthermore, the new PowerPC Macintoshes might be fast enough for the filtering.