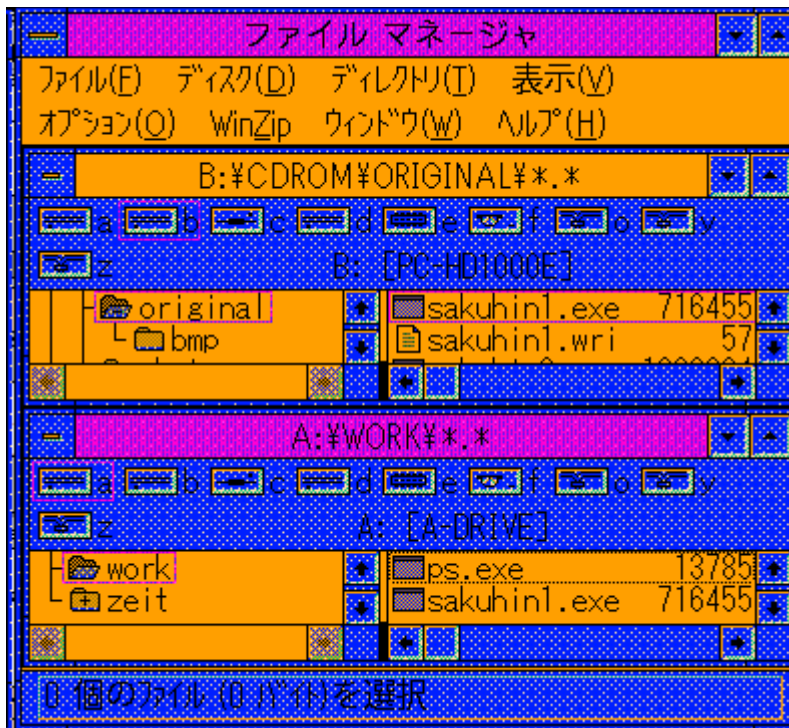


yf{fN,ì”P—,Íf_fCf,,f,f“fh,a—Ç,Ž—‡,ꜣzŽg—p•û-@

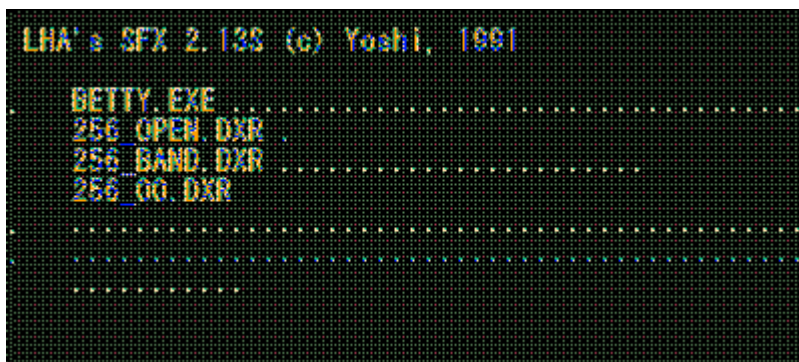
,PD“@ìŠÂ«
@@>Windows3.1AWindows95,a“@ì,.,é,±,ÆB
@@>640~480fsfNfZf<A256F^Èã,ì%œ—Ê%ð‘œ“x(32,000F^Èã,ð,,s)B
@@>fn[fhfffBfXfN,ìó,«—e—Ê 30MB^ÈãARAM 11.6MB^Èã(16MB^Èã,ð,,s)B
@@>Video for Windows,a fCf“fXfg[f<,³,ê,Ä,¢,é,±,ÆB(Windows95,É,Ífof“fhf<İ,Y)
! Windows95,Ä,İí,É“@ì,μ,È,¢ê‡,ª, ,è,Ü,·B

,QDfCf“fXfg[f<•û-@

@@1)ftf@fCf<f}fI[fWff(*1),ðŽg—p,μ,ÄCD-ROM,ìoriginal“à,É, ,é~³kff[f^
"sakuhin1.exe",ðfn[fhfffBfXfNã,ì"C^Ó,ìffBf¢fNfgfŠ[(*2),ÉfRfs[,μ,Ü,·B



@@2)fn[fhfffBfXfN,ÉfRfs[,μ,½"sakuhin1.exe",ðŽÀs,.,é,ÆA
ŽÀsftf@fCf<"betty.exe",ðŠÜ,ß,½i•iftf@fCf<,ªŽ©“@%ð“€(“WŠJ),³,ê,Ü,·B



@@3)ì•iftf@fCf<%ð“€I—¹ÆãAfn[fhfffBfXfNã,ì"sakuhin1.exe",ðíœ,μ,Ü,·B

,RDŽÀs•û-@

@@fvffOf%of€f}fllfWff,lfjff...[(3),©,çfAfCfRf“,đ'l'đ,μ
uftf@fCf<-¼,đŽw'è,μ,ÄŽÀsv,đ'l,ŇA"betty.exe",đŽw'è,μŽÀs,μ,Ü,·B



,SDfAfCfRf““o~^,đ,μ,ÄŽÀs,·,é•û-@

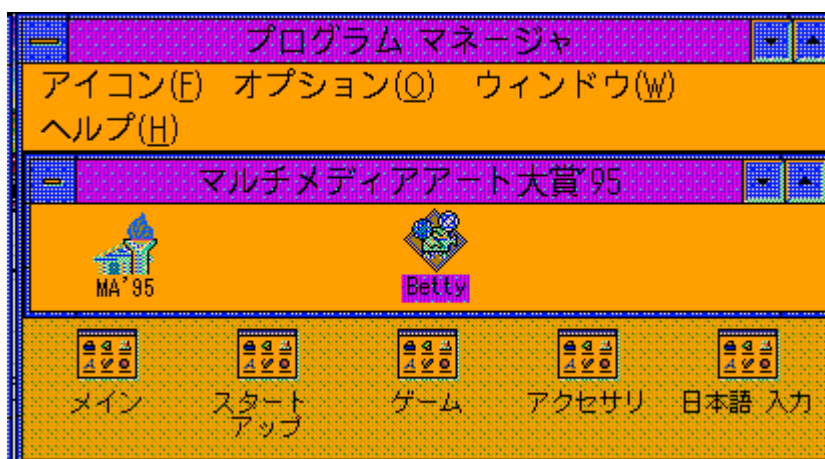
1)"f}f<f`ffffBfAfA[fg'âÜ'95",lfOf<[fvfEfCf“fhfE,đfAfNfefBfu,É,μ,Ü,·B

2)fvffOf%of€f}fllfWff,lfjff...[,©,çfAfCfRf“,đ'l'đ,μ
u“o~^,ÆfOf<[fv,li~v,đ'l,Ň,Ü,·B

3)ufAfCfRf“,l“o~^v(*4),đf`fFfbfN,μ,Ü,·B

4)ŽQÆf{f^f“,đfNfŠfbfN,μfCf“fXfg[f<æ,lfBfÆfNfgfŠ[“à,l
"betty.exe",đ'l'đ,μAu,n,jvf{f^f“,đfNfŠfbfN,μ,Ü,·B

5)fRf}f“fhf%ofCf“,É“(Žw'èfffBfÆfNfgfŠ)\BETTY.EXE",Æ“ü—Í,³,ê,Ä,¢,é,ì,đ
Šm“F,μu,n,jvf{f^f“,đfNfŠfbfN,·,é,Æ“f}f<f`ffffBfAfA[fg'âÜ'95",l
fOf<[fvfEfCf“fhfE,li†,É"betty"fAfCfRf“,ai~³,ê,Ü,·B



!,' Windows95,Ä,îÈ%°,l-¼l,É,È,è,Ü,·B

(*1) = fGfNfXfvf[f%o
(*2) = ftfHf<f_
(*3) = fXf^[fgffjf...[
(*4) = fVf‡[fgfJfbfg,li¬