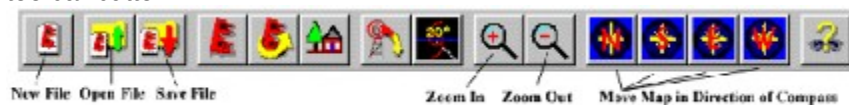


## Eye of the Storm Help Index

### Introduction...

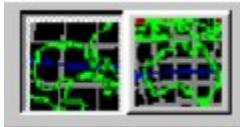
*Eye of the Storm*™ allows you to collect data on any number of Hurricanes, Typhoons, or Cyclones and store them in a single 'storm' file. These files have an .STM extension. You may put as many storms and coordinates in a storm file as you wish. For example, you might save all the storms for the 1997 season in the file 1997.STM.

When you first start *Eye of the Storm*™, it creates an empty storm file for you to use. After entering data, or loading an existing storm file, you can start over at anytime by creating a new empty storm file. To create an empty storm file, simply select 'New' on the 'File' menu, or click on the first toolbar button '**New File**' shown below. After entering coordinates and storm information, you can save your storm file with the 'Save' command on the 'File' menu. You may also save your storm file by clicking on the '**Save File**' toolbar button. To retrieve saved storm files, select 'Open' on the 'File' menu, or click on the '**Open File**' toolbar button.

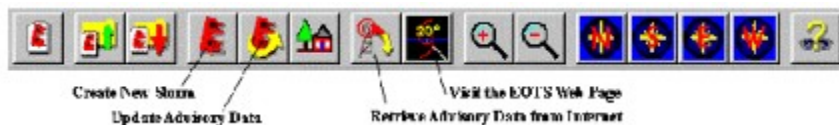


Storms are displayed on a three-dimensional globe showing world coastlines. You can use the arrow keys to spin the globe back and forth and up and down, and the '+' and '-' keys to zoom in and out. These functions are also available from the toolbar. You can also move the globe around by clicking on it with the left mouse button and dragging it into the desired orientation.

Two new buttons on the toolbar added for the year 2000 edition allow you to quickly orient the globe to display either the Australian/Indian Ocean storm regions, or the US/Caribbean storm regions. These settings are also used to determine the default view when *Eye of the Storm*™ is first started.



You will notice as you zoom in closer that the larger labels (Gulf of Mexico, etc.) disappear, and smaller labels (city names such as Tampa, Miami, etc.) appear. The current position and zoom factor on the globe are saved with the storm file, and are restored when the storm file is reloaded. To see how to modify the list of cities shown, see the section [Modifying the List of Displayed Cities](#) below.



You can use *Eye of the Storm*™ to create interactive Hurricane tracking maps without having to be on the Internet. Click on the '**Create New Storm**' button to add a new storm to the map. Clicking on the '**Update Advisory Data**' toolbar button allows you to edit the coordinates and other advisory information for the storm. These functions are also available via the program menu.

*Eye of the Storm*™ is best used when your computer is connected to the Internet. Toolbar buttons and menu choices allow you to automatically download and plot the coordinates for any active storms. A shortcut is also available to take you directly to the Starstone *Eye of the Storm*™ Web site. Both of these features require Internet Access from your Internet Service Provider.

**Additional Help is Available on these Topics:**

[Adding Storms](#)

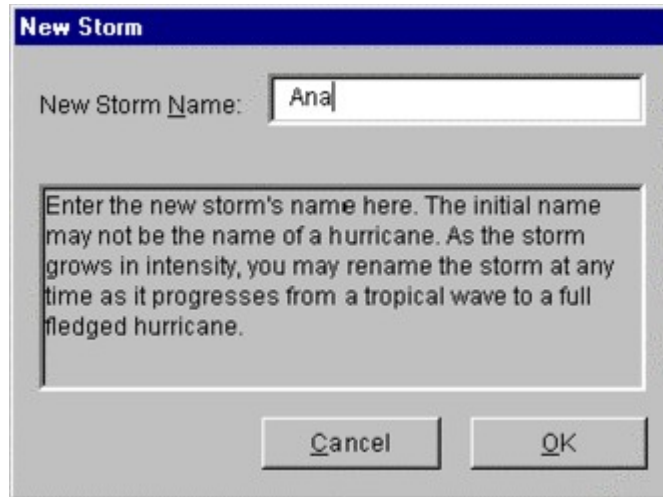
[Updating Coordinates](#)

[Setting a Home Location](#)

[Modifying the List of Displayed Cities](#)

## Adding Storms

To add a new storm to the storm file, you may select '**New Storm**' on the Edit menu, right click on the desktop and select '**New Storm**' on the Popup menu, or select the '**New Storm**' toolbar button. The program will then ask you for the name of the new storm. You may at any time later change the name of the storm, so do not feel required to give the storm an official hurricane name yet. If you like you can start tracking storms when they are say 'Tropical Depression #6'. You can change the name of the storm later from the '**Update Coordinates**' dialog.



After you've entered the name of the storm, the '**Update Coordinates**' dialog is then presented. To add or modify coordinates for a specific storm, see the Updating Coordinates section.

## Updating Coordinates

You may update the coordinates for any storm, by selecting the '**Update Coordinates**' menu item under '**Edit**', clicking on the '**Update Coordinates**' toolbar button, or selecting '**Update Coordinates**' from the popup menu that appears by clicking the right mouse button in the map area. One dialog box handles all input regarding storm positions and other information.

The screenshot shows the 'Storm Data' dialog box with the 'Denny' tab selected. The 'Storm' field is set to 'Denny'. The 'Date' field shows '18/08/1997'. The 'Time (GMT)' field shows '20:18'. The 'N. Latitude' field shows '0.00'. The 'W. Long' field shows '0.00'. The 'Tnd Spd. (mph)' field shows '0'. The 'Direction' field is set to 'Stationary'. The 'Wind Speed (mph)' gauge shows '0'. The 'Pressure (mb)' gauge shows '0'. The 'Observation Notes' field is empty. The 'Active Storm' checkbox is checked. The 'Hide on Map' checkbox is unchecked. The 'Classification' dropdown is set to 'Tropical Depression'. The 'Close' button is visible.

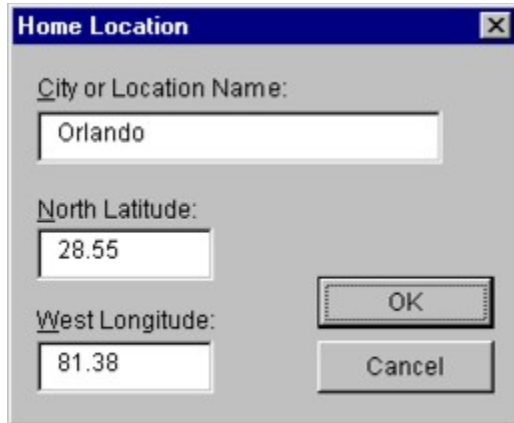
Across the top of the dialog box, you'll see one tab displayed for every storm in the current storm file. At the bottom of the dialog are a series of buttons (First, Next, Back, Last, and New) for navigating through all the coordinates that have been entered for the selected storm.

When you click '**New**' a new "Observation" is created for the storm. The values in the edit fields are left empty for you to fill in. You may delete an Observation at any time by clicking '**Delete**'.

You may also change the name of the storm by simply replacing the text in the '**Storm**' field. You may wish to do this when upgrading a Tropical Storm or Depression to a named storm. When you do this, the program will prompt you to make sure you want to make the change. The new storm name will be reflected on the tabs the next time this dialog box is displayed.

## Setting a Home Location

You may add a home location by clicking on the '**Set Home Location**' toolbar button or menu item under the '**Edit**' menu. Coordinates should be entered as decimal values, as *Eye of the Storm*™ does not work with minutes and seconds of longitude or latitude. A sample is shown below:




The image shows a Windows-style dialog box titled "Home Location" with a close button (X) in the top right corner. The dialog has a light gray background. It contains three input fields: "City or Location Name:" with the text "Orlando" entered, "North Latitude:" with the value "28.55", and "West Longitude:" with the value "81.38". To the right of these fields are two buttons: "OK" and "Cancel".

When a Home Location is specified, the approximate distance to the storm from the home location is displayed along with the storm on the screen. The Home Location may also be selected from among the list of cities displayed on the map. See [Modifying the List of Displayed Cities](#) for details.

## Modifying the List of Displayed Cities

The list of cities displayed on the map can be changed at any time by selecting '**Modify City List**' from the '**Edit**' menu. The following dialog box allows you to add new cities, remove cities from the list, change a city location or name, and finally it also allows you to quickly flag a particular city as the Home Location. Note that only one city can be flagged as the Home Location. Whenever you check this box, the city displayed becomes the Home Location.



The dialog box, titled "City List 1 of 21", contains the following elements:

- Name:** A text input field containing "Baton Rouge".
- North Latitude:** A text input field containing "30.45" followed by the label "Degrees".
- West Longitude:** A text input field containing "91.18" followed by the label "Degrees".
- Home Location:** An unchecked checkbox.
- Instructions:** A text box stating "Enter Latitude and Longitude as decimal values (i.e. 45.2 degrees)".
- Navigation Buttons:** A vertical column of buttons on the right side: "First", "Next", "Previous", "Last", "New", and "Remove".
- Close Button:** A "Close" button at the bottom right.

The buttons along the right side of the dialog box are used to navigate through the list of cities. If you change any of the cities characteristics (name, location) then that cities entry is changed regardless of whether or not you move off that city. When adding a new city, you should click on '**New**' first. If you overwrite a city, then that city is essentially replaced by your entry. The list of cities is sorted and saved each time you exit Eye of the Storm.

## **\$kNew Global Features**

Now *Eye of the Storm*™, supports global tracking of Hurricanes, Typhoons, and Cyclones.

**No Help Available**

No help is available for this message box.



