

Welcome

Welcome to SMS4All, a product from Pitron Systems that helps you send text messages to mobile phones from your personal computer.

SMS4All is a simple, friendly and easy to use tool that holds the following advantages:

Standard user interface

- Same user interface to all cellular service providers.
- Bypasses the need to enter the cellular service provider's Internet site and getting familiar with different user interfaces.

Built-in Phone book

- Built-in easy to use phone book.
- Seamless integration with Microsoft® Outlook™ contacts list.
- Updates the Microsoft® Outlook™ contacts list.
- Manages one addressee list for e-mails and mobile phone messages.

Multi- addressee message

- Sends one message to a number of addressees from different cellular service providers in one action.

Updates

- Diminishes the need for new versions due to the continual data updates in the server.
- Updates changes made in the cellular service provider's Internet sites.
- Future update of new cellular service providers that enable text messages.

My first message

Writing and sending a message

In the Message details section of the main window type the Sender name: your name.

Type your message in the Message text box.

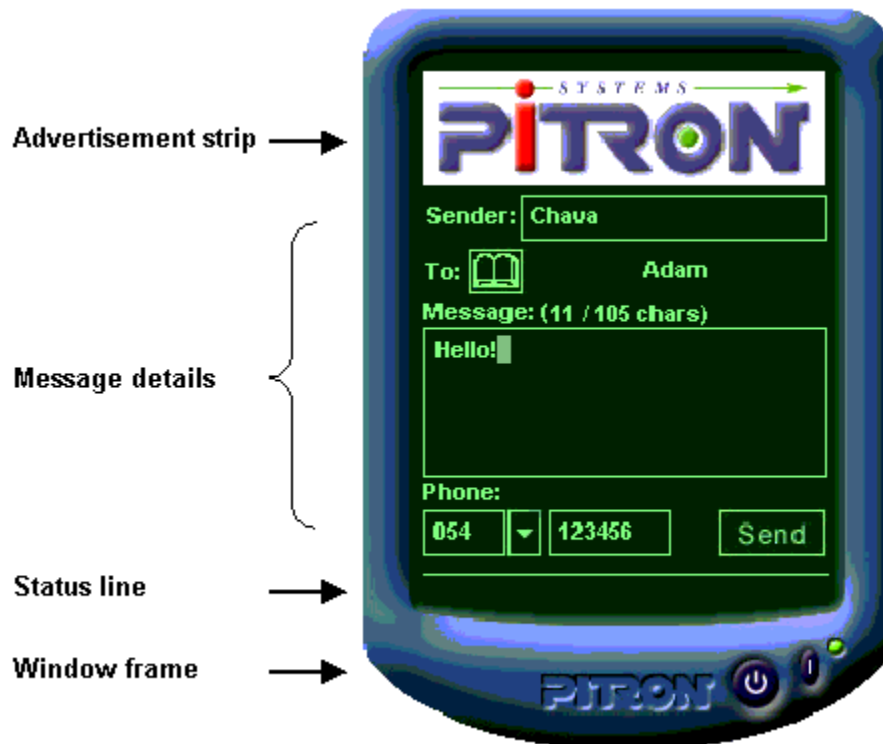
Choose the area code and type the phone number to which you would like to send your message.

Click the Send button.

In case the definitions window opens during the message sending, see “[Receiving identification settings](#)” and “[Preferences](#)”.

If you are using the phone book for the first time, see “[Phone book – Construction](#)” and “[Phone book - Daily use](#)”.

Main window



The main window consist of four sections, advertisement strip, message details, status line and the window frame:

Advertisement strip

The advertisement strip shows advertisement messages, “Banners”. The advertisements change every constant period of time.

Double clicking the strip will open the Advertising Company’s Internet site.

SMS4All was designed to prevent communication pressure by taking the advertisement from a local advertisement pool and prevents advertisement showing when the advertisement strip is hidden or the main window minimized.

Message details section

Sender: The name of the message sender. Usually this will require a ‘one-time-only’ typing of your name. The last typed name will be kept also after closing SMS4All. To mobile phones that support Hebrew messages you can send a Hebrew name. Attempting to send a Hebrew name to mobile phone that does not support Hebrew, will cause a message failure. A suitable message will appear in the status line.

To: The name of the message addressee. Click the phone bok symbol and choose the desired addressee. When choosing more then one addressee the line <Recipient List> will appear and when pointing to it with the mouse a list of all addressees names will popup.

Message: The message content. “11/108 char” indicates the current number of characters in the message, including the sender name, out of the maximum possible number of characters – 108. To mobile phones that support Hebrew you can send a Hebrew message. Attempting to send a Hebrew message to mobile phones that do not support Hebrew will cause a message failure. A suitable message will appear in the status line.

Phone: The addressee phone number. Updates automatically when choosing an addressee from the phone book. Can be also directly typed in the main window. Choose the area code and type the phone number to which you would like your message to be sent. When choosing more than one addressee, no phone number will appear.

Send: Activates the message sending.

Status line

A text line, at the bottom of the main window, that holds different status messages about the program and the sent messages.

Window frame



Indicator light: The colors of the indicator light indicate the status of communication with the server and the presence of identification definitions for connecting to the different cellular service providers' servers:

Red - There is no connection with the server. Continue attempt to connect.

Yellow - There is no connection with the server, but local identification settings were found for temporary use.

Green – Proper connection to the server.

Main menu button: clicking the Main menu button will show the following menu options:

Cancel message – Cancels the current message. The cancellation is from this moment on. Message actions that took place before the cancellation click won't get canceled. For example: a multi-addressee message that was canceled after clicking the send button will be sent to the addressees for whom all message sending stages were performed until the cancellation click and will be canceled to the rest of the addressees list.

Phone book – Opens the SMS4All phone book. See "[Phone book - Daily use](#)".

Preferences – Opens the General definitions and cellular service providers identification settings window. See "[Preferences](#)".

Tell friends! – Opens a new e-mail message with subject and message content. All you have to do is address it to your friends to update them about the new personal computer – to – mobile phone text messages sender SMS4All.

Home page - Opens Pitron Systems home page.

Help – Local Help: English/Hebrew Help

Online Help: Not active.

About: Program version details.

Languages – Opens a dialog box for choosing Interface language. Available languages: English(USA) and Hebrew.

Terminate – Exits the program.

Close/Cancel message button: Cancels the message and minimizes the main window.

Status

Active: Connected to the server and has identification definitions. Ready to send messages.

Connecting: Trying to connect to the server.

Logging on: Sending the user name and password to the cellular service provider server.

Logged on: User name and password were identified at the cellular service provider site.

Sending: Sending the message.

Timed out: while waiting for the next message send attempt.

Failure: The message was unable to reach the cellular service provider server.

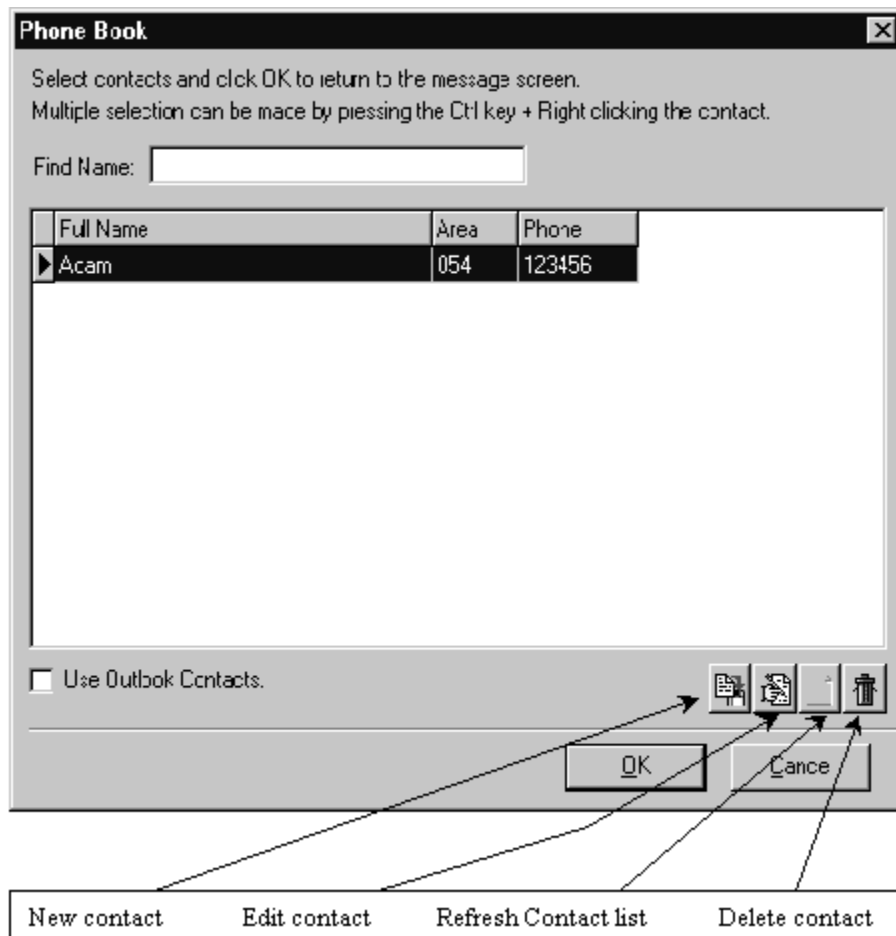
Cancel: the current message was canceled.

Message sent: The message was sent.

Message rejected: The cellular service provider server rejected the message.

Rejection can be caused from several reasons. Sending a Hebrew text message to a mobile phone of a cellular service provider that does not support Hebrew, sending a message beyond the maximum number of messages per day, etc.

Phone book - Daily use



Choosing one addressee: In order to choose one addressee you need to mark his details line in the phone book and click the "OK" button.

Multi-addressee choosing: In order to choose more than one addressee you need to click Ctrl and choose each addressee by clicking his details line in the phone book with the right mouse button. Click "OK" to confirm.

Edit:

New Contact – In order to add a new contact to the addressee list you need to click the "New Contact" button. An edit window will open. In the edit window you can enter the name, area code and phone number. You must confirm or cancel the editing by clicking the "OK" or "Cancel" buttons respectively.

Edit - In order to Edit a contact in the phone book list you need to click the "Edit Contact Details" button. An edit window will open. In the edit window you can update the name, area code and phone number. You must confirm or cancel the editing by clicking the "OK" or "Cancel" buttons respectively.

When editing records from the Microsoft® Outlook™ contact list the addressee name cannot be edited.

Refresh List – In order to refresh the Microsoft® Outlook™ contact list after editing it in the

SMS4All, you need to click the “Refresh Contacts List” button.

Delete Contact – In order to delete a contact from the addressee list you need to mark the specific detail’s line and click the “Delete Contact” button.

Find Name – In order to find a specific contact you need to type a character combination from the beginning of the addname or the entire name’s characters at the “Find Name” text box and the sorted list will appear instantly.

Use the Microsoft® Outlook™ Contact list: Marking the “Use Outlook Contact” box enables the use of the Microsoft® Outlook™ contact list details. The phone book edit tools (Find, Add, Edit, Delete) are valid on this list and any change made will be updated also in the original Microsoft® Outlook™ contact list.

Unrecognized number: In case the number in the Microsoft® Outlook™ “Mobile phone” field is not in a certain format (area code separated from the phone number with hyphen or space), the number will show up under “Unrecognized number”. You need to enter the Edit window and decompose the number to an area code number and a phone number in the suitable fields and confirm the addressee choose by clicking the “OK” button. The unknown number will be automatically deleted and the edit will also update the Microsoft® Outlook™ contact list.

OK: Confirms the choice of an addressee or a list of addressees and passes the details to the main window message details section.

Cancel: Cancels the chosen addressee or list of addressees and returns the user to the main window with an empty message details section.

Remark – When the phone book window is hidden SMS4All will automatically minimize itself after a period of time.

Phone book – Construction

Click the phone book symbol or choose “Phone book” from the menu. Choose whether you want to build a new SMS4All addressee list or use the Microsoft® Outlook™ contact list (you can use both options). Mark your choice in the appropriate box. Update the Addressees list by clicking the suitable button (Add, Edit, Delete) and making the desired changes. For sending a message, an area number and a phone number is sufficient. For daily use of the Phone book see “[Phone book – daily use](#)”.

Receiving identification settings

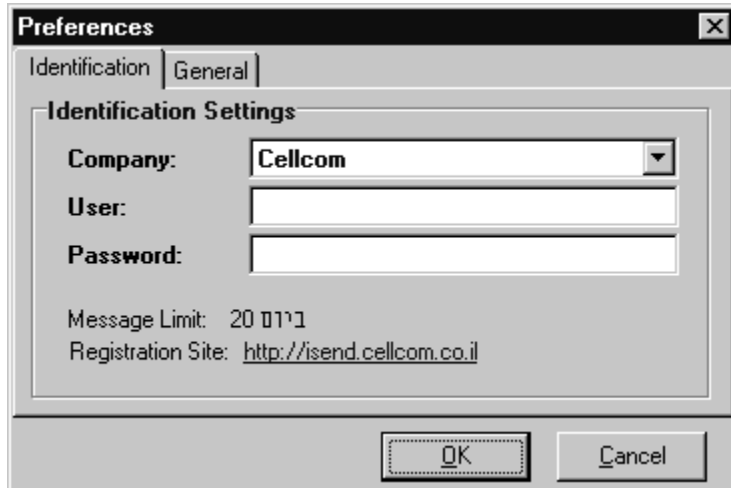
When sending a message to a mobile phone from one of the cellular service providers that demand user name and password at the entrance to their messages site, the “[Preferences](#)” window will automatically open or you should click in advance the Main menu button and choose the option “Preferences”. Enter the company site, register and receive the identification settings. Type the user name and password in the Preferences window and confirm the details by clicking the “OK” button.

Preferences

In order to enter the Preferences screen you need to click the Main menu button in the main window frame and choose the option “Preferences”.

General

General system settings:



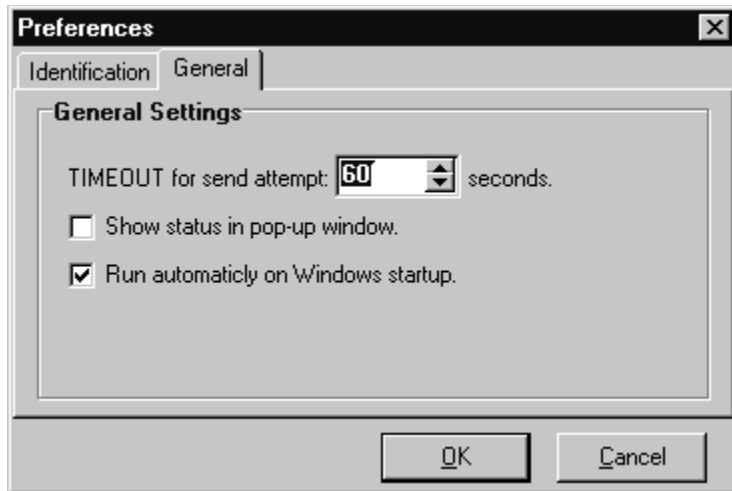
The screenshot shows a 'Preferences' dialog box with a title bar containing a close button. Inside, there are two tabs: 'Identification' and 'General', with 'General' being the active tab. The 'General' tab contains a section titled 'Identification Settings'. This section includes three input fields: 'Company' (a dropdown menu currently showing 'Cellcom'), 'User' (a text box), and 'Password' (a text box). Below these fields, there are two lines of text: 'Message Limit: 20 01'1' and 'Registration Site: <http://send.cellcom.co.il>'. At the bottom of the dialog box, there are two buttons: 'OK' and 'Cancel'.

TIMEOUT for send attempt: Setting the period of time between one message-sending attempt and another.

Show status in pop-up window: Marking the box will show the status line in a separate pop-up window.

Run automatically on Windows startup: Marking the box will run SMS4All automatically on Windows startup.

Identification settings



The identification settings are required only for cellular service providers that demand a user name and password on entry to their messages site. The entry to the cellular service provider site to register and receive the identification settings will take place only once for each cellular service provider and the definitions will be kept in the SMS4All system. If no identification settings were obtained before sending the first message to a mobile phone from one of those cellular service providers, the Preferences window will open automatically and will direct the user to the cellular service providers' site for registration.

Company: The name of the cellular service provider. Can be chosen out of an existing list.

User Name: The user name as it was registered in the current cellular service provider messages site.

Password: The user entrance password to the current cellular service provider messages site.

Registration site: The cellular service provider registration site address. The address is necessary for receiving the user name and entrance password to the site. The entrance to the site and the registration process will take place only once.

Messages limit: An automatically filled field. Indicates the maximum number of messages per day for the current cellular service provider.

OK: Confirms the settings and operates them on SMS4All.

Cancel: Cancels the settings change and returns to the prior state.

