

Expert Fun Clips for Windows

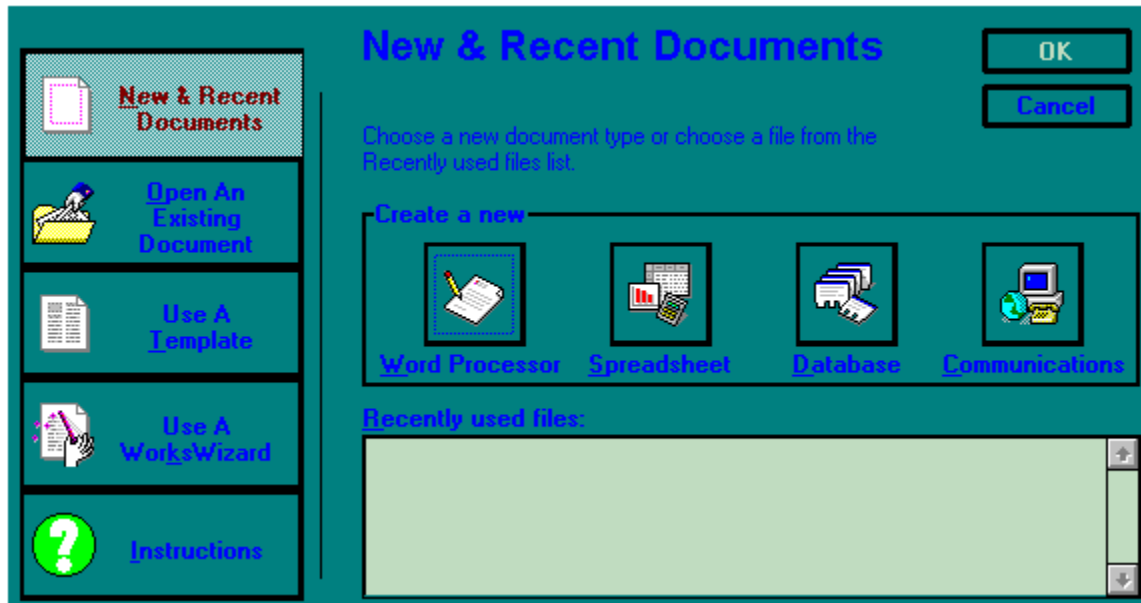
Expert Fun Clips for Windows is not an executable program. The installation program installs the *.PCX files to your hard drive. Fun Clips images are used to enhance documents, flyers, and desk top publishing files. To use Fun Clips you must open the images from within another application. This help file provides you with instructions on importing images into Microsoft Word for Windows 6.0, Microsoft Works for Windows 3.0, MS Windows Paintbrush, Wordperfect for Windows 6.0, and Expert Power Publisher. To open Fun Clips in other applications please consult the user guides for those applications.

- ▶ [MICROSOFT WORD FOR WINDOWS 6.0](#)
- ▶ [MICROSOFT WORKS FOR WINDOWS 3.0](#)
- ▶ [PC PAINTBRUSH](#)
- ▶ [WORDPERFECT FOR WINDOWS 6.0](#)
- ▶ [EXPERT POWER PUBLISHER](#)

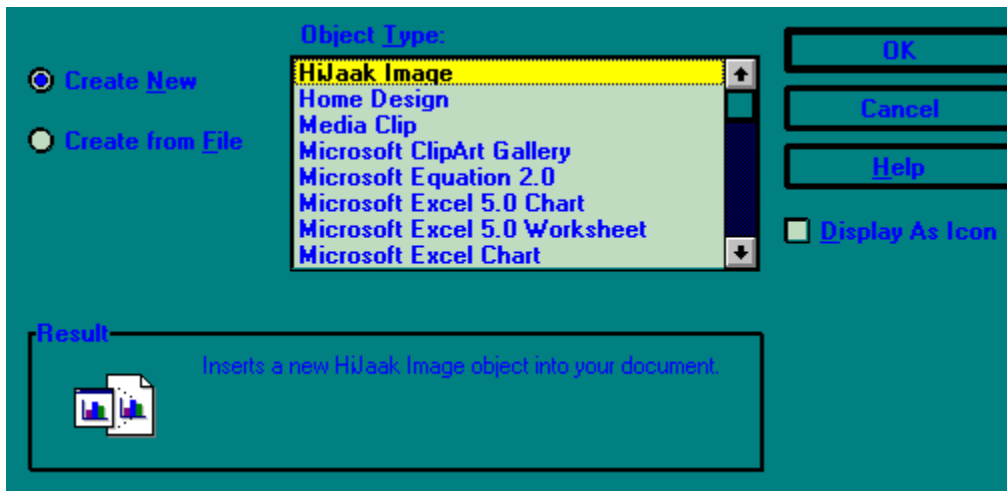
Graphic Images in Expert Fun Clips for Windows © 1995 by Elfring Soft Fonts, Inc. and Gary Cooper.

MICROSOFT WORKS FOR WINDOWS 3.0

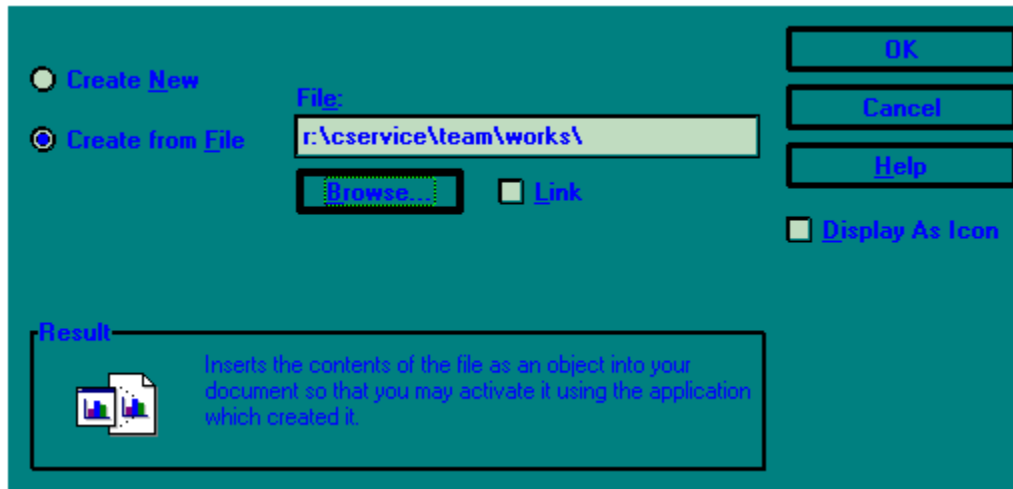
Step 1 Choose **New & Recent Documents**. Then choose **Word Processor** to open a new document.



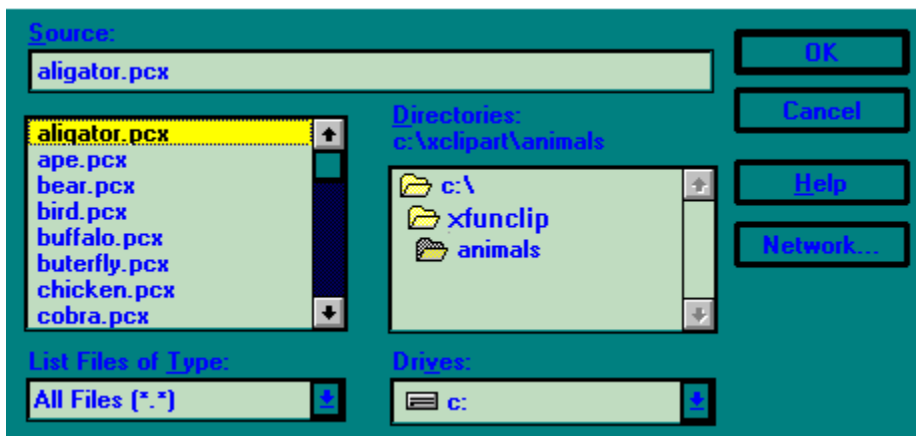
Step 2 Choose **InsertObject** from the Menubar and then choose **Create from File**.



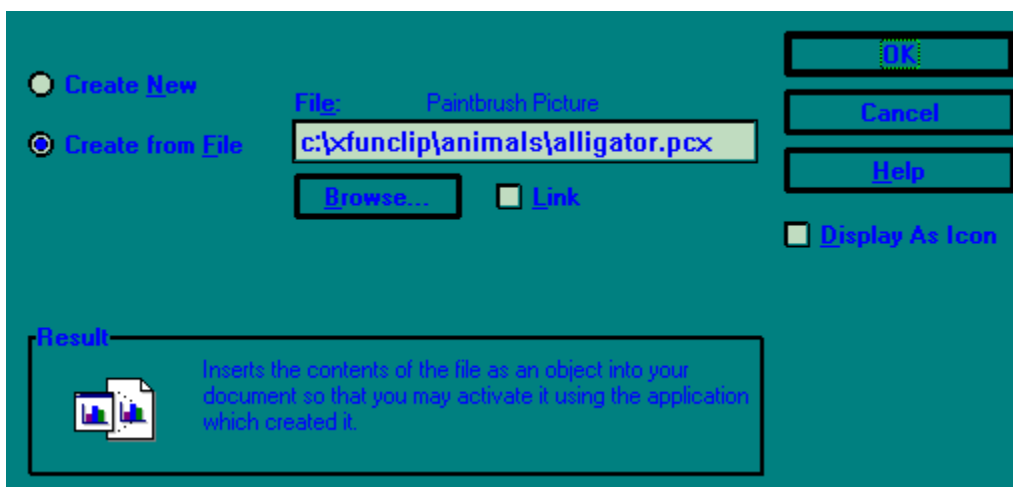
Step 3 Choose **Browse**.



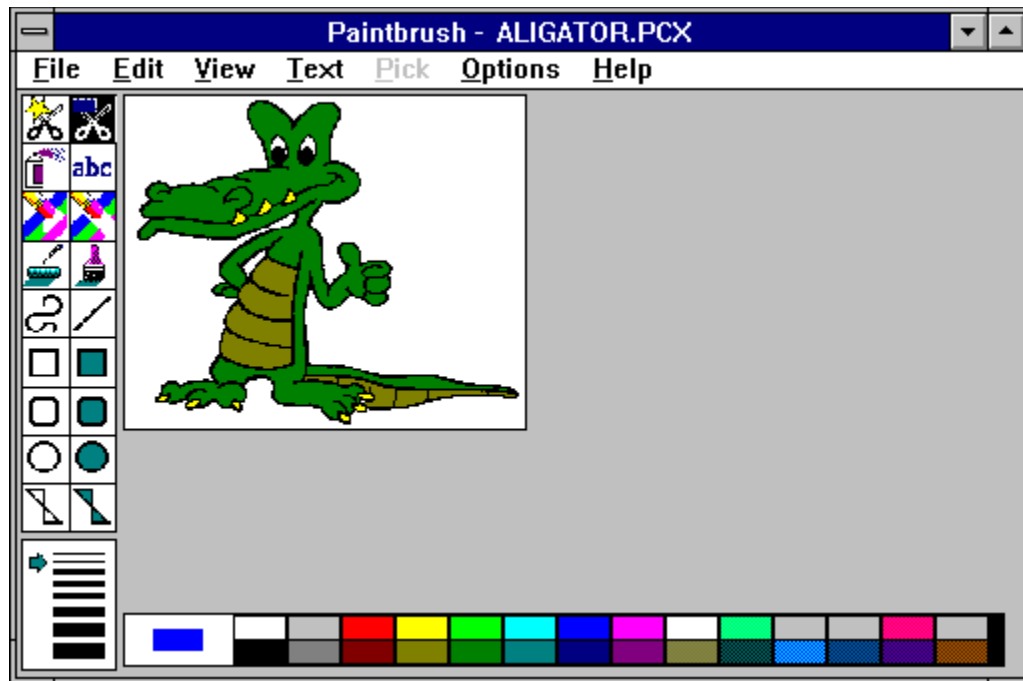
Step 4 Double-click on **Xfuncclip** and then double-click on the **Animals** category.



Step 5 Double-click on the **Aligator.PCX** image(all images have the .PCX file extension), and then click on **OK**.



Step 6 Click on **OK**.



Step 7 Choose **Exit & Return to Word** and the picture will be in your document.

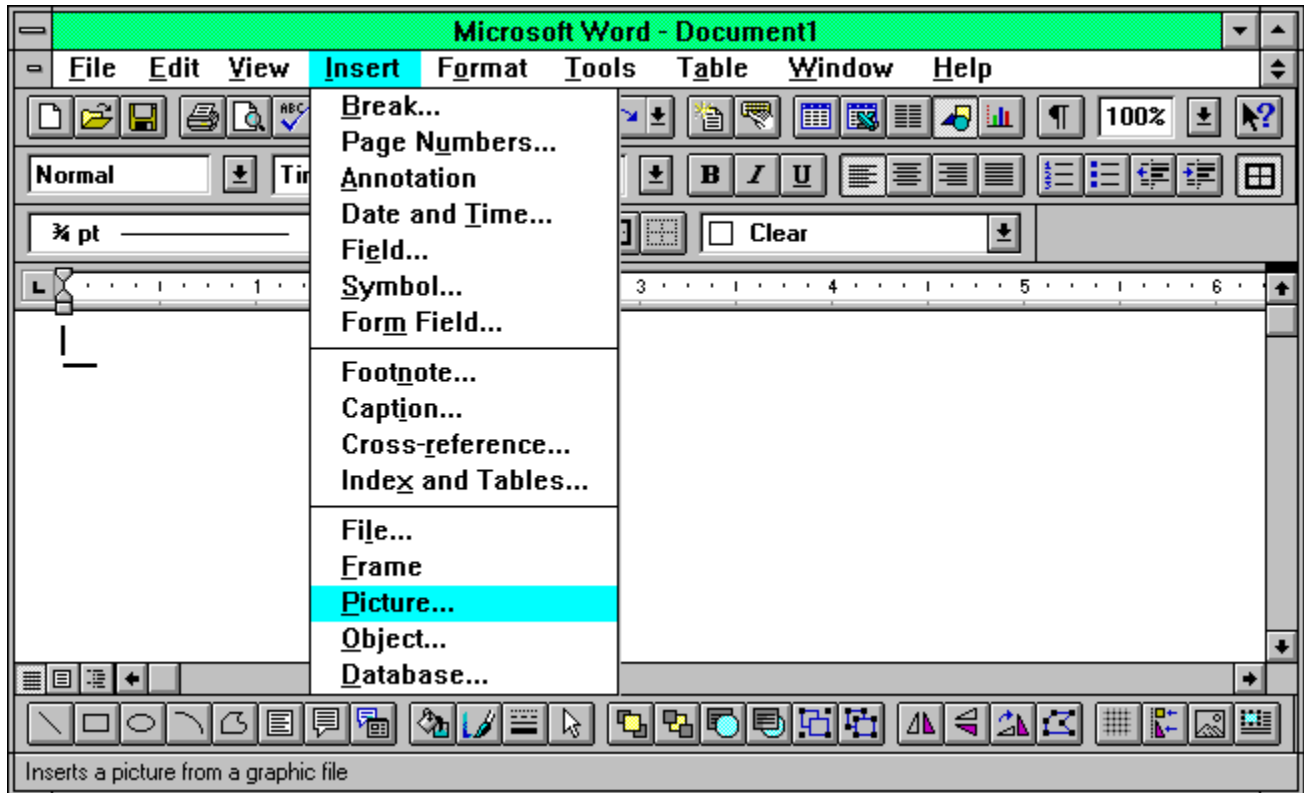
See Also:

[Contents](#)

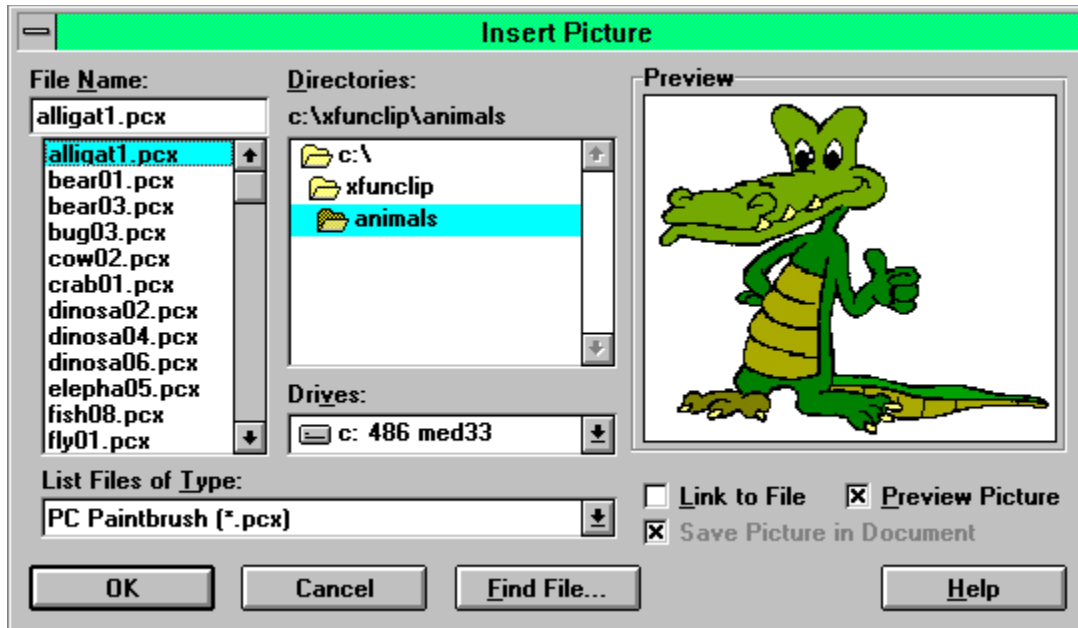
MICROSOFT WORD FOR WINDOWS 6.0

Step 1 Choose **F**ile\New.

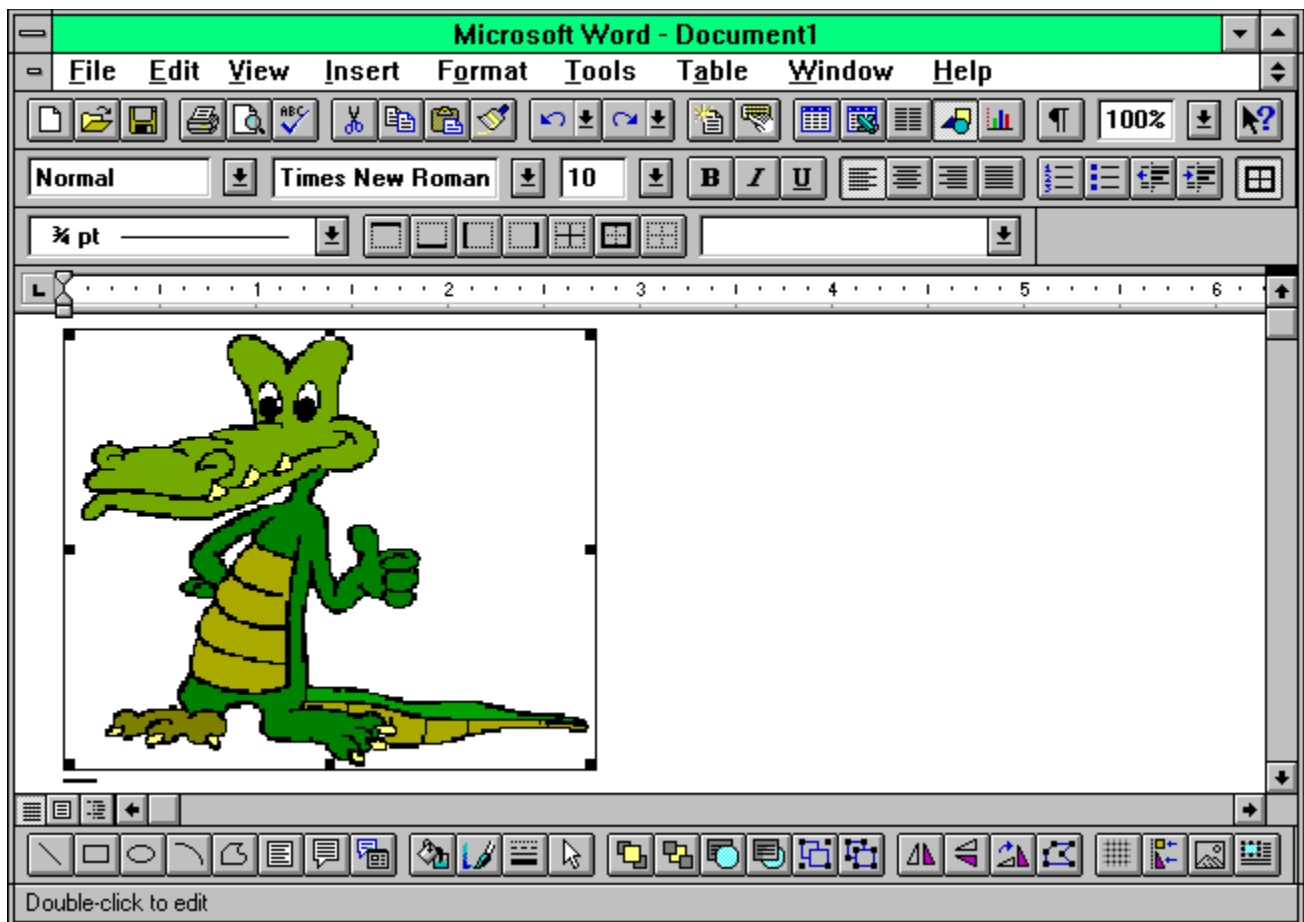
Step 2 Choose **I**nsert\Picture from the Menubar.



Step 3 Find the **Xfunclip\Animals** directory. Change the **List Files of Type** to **PC Paintbrush (*.PCX)**. Select and highlight the **Aligat1.PCX** file and click on **OK**.



Step 4 The image will now be placed in your document.



See Also:

Contents

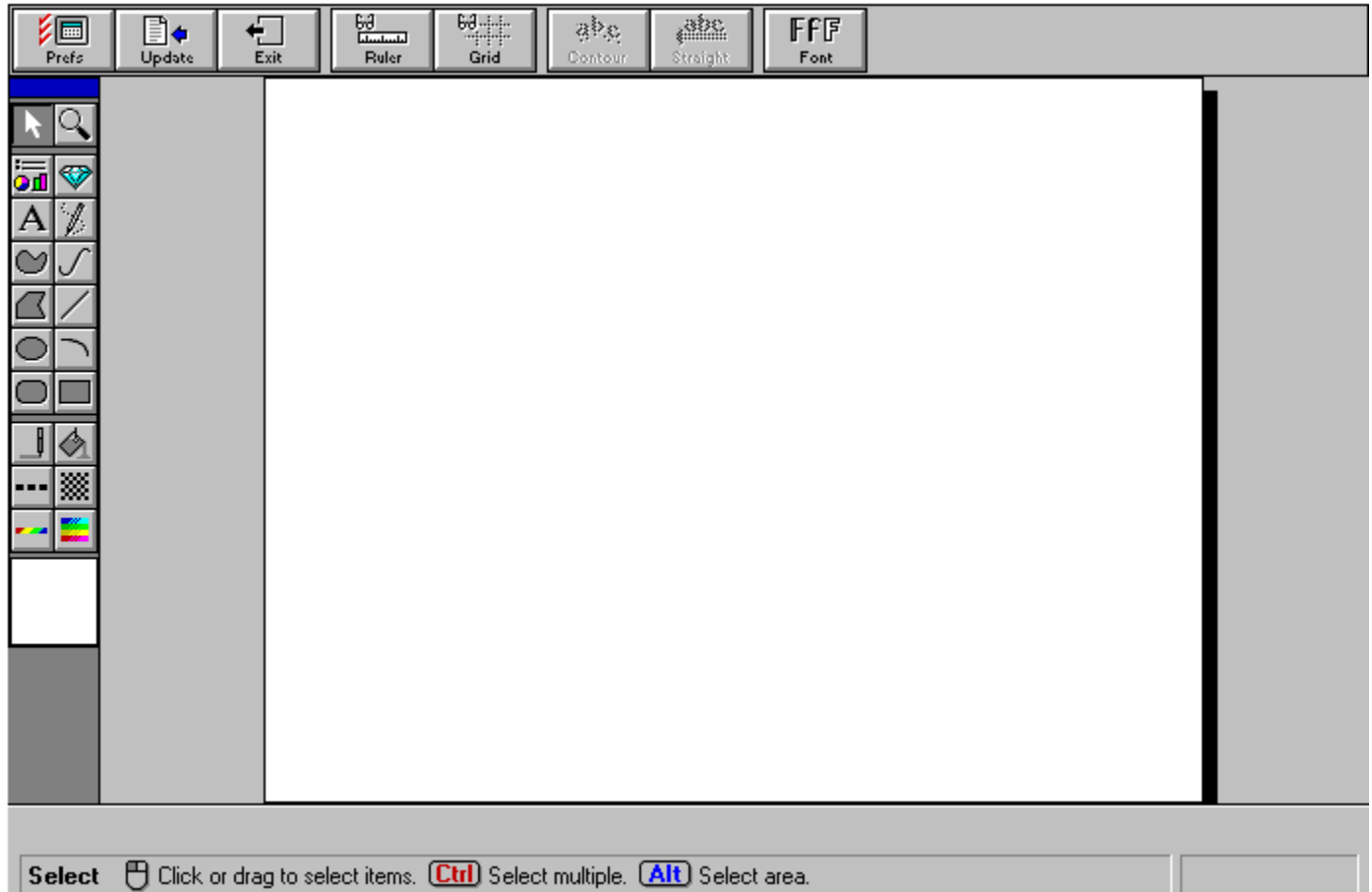
WORDPERFECT FOR WINDOWS 6.0

Step 1 Choose File\New.

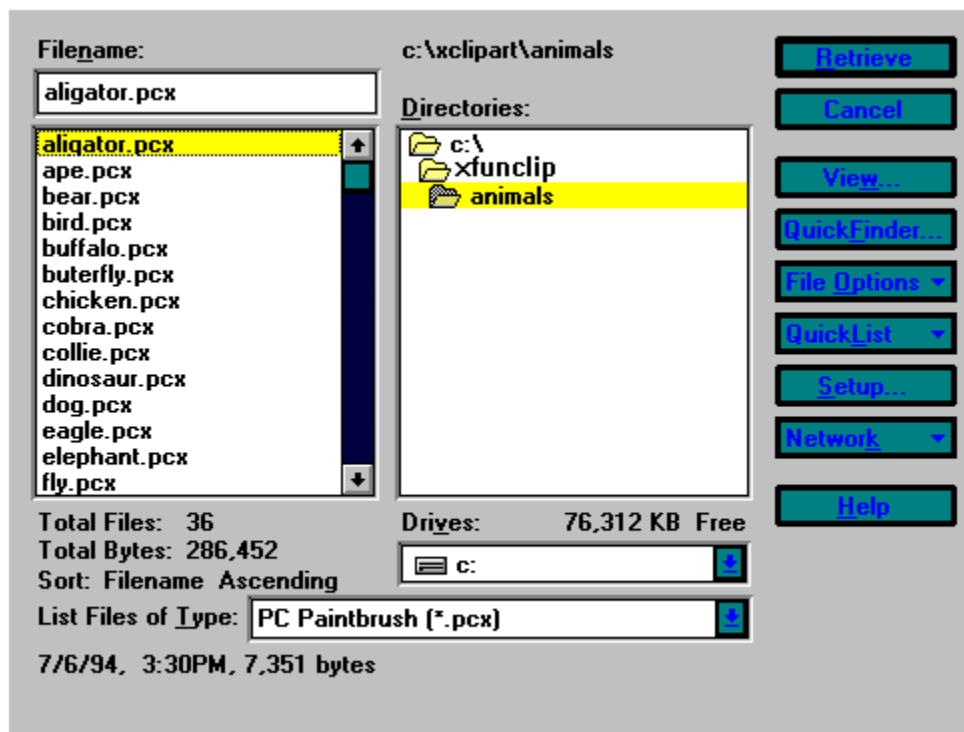
Step 2 Click on the **Draw** icon.



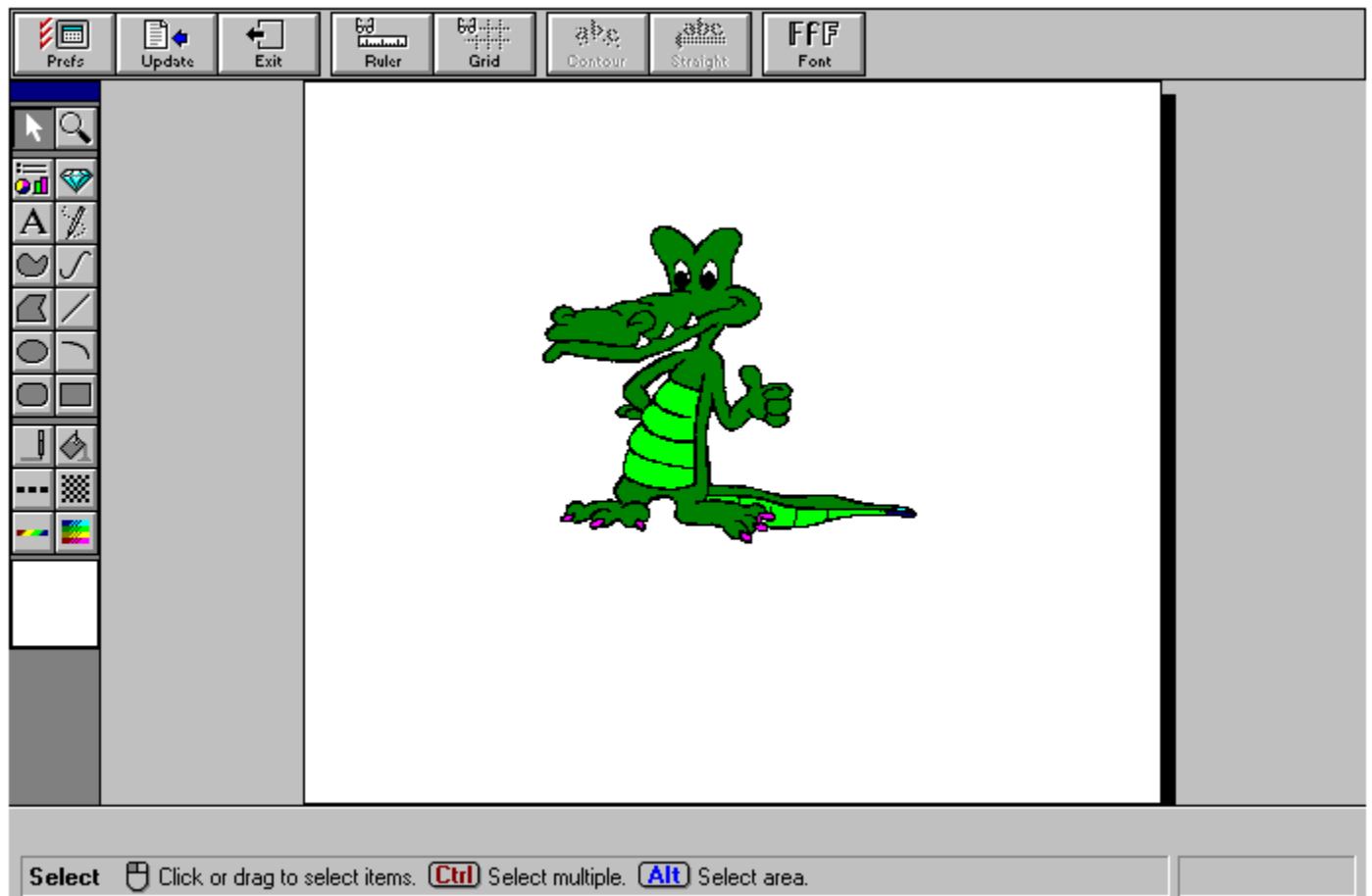
Step 3 Choose File\Insert File.



Step 4 Find the **Xfunclip\Animals** directory. Change the **List Files of Type** to **PC Paintbrush (*.PCX)**. Select and highlight the **Aligator.PCX** file and click **Retrieve**. The picture will now appear in **Draw**.



Step 5 Choose **Update** to put the image in your document.

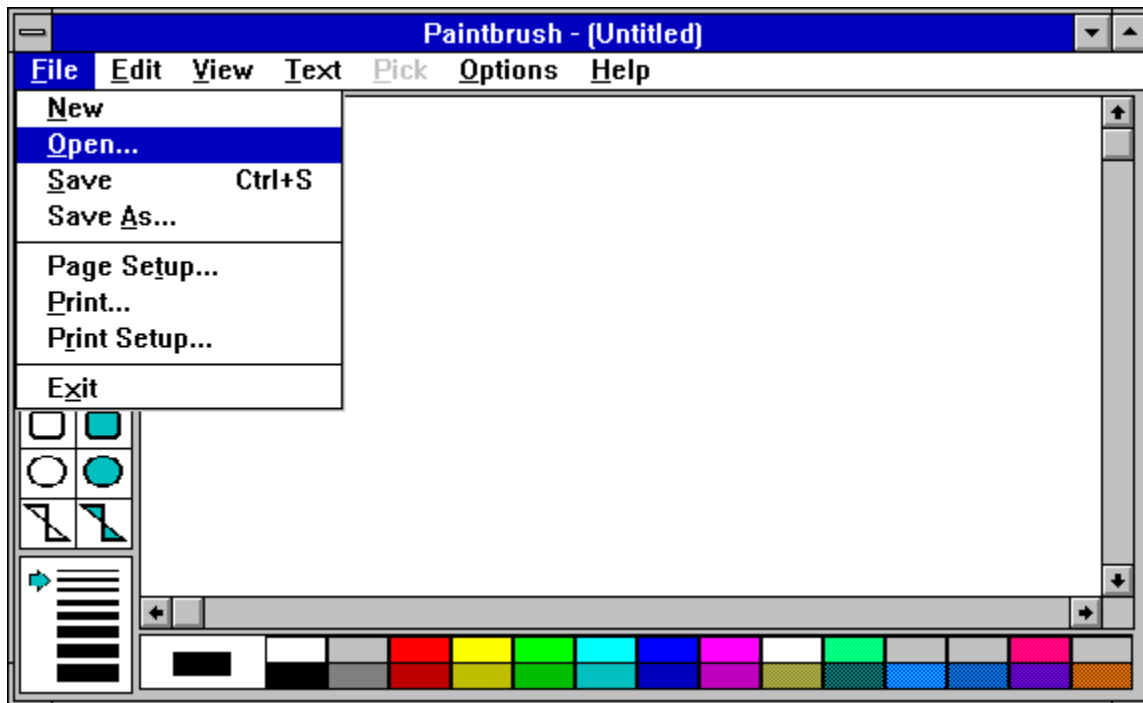


Step 5 Close **Draw**.

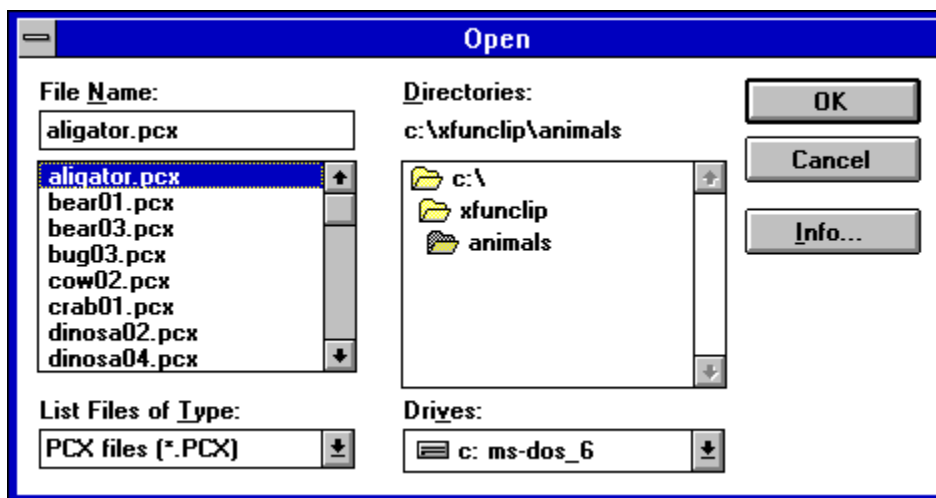
See Also:
[Contents](#)

PC PAINTBRUSH

Step 1 Choose **F**ile\Open.



Step 2 Find the **Xfunc**lip\Animals directory. Change the **List Files of Type** to **PC Paintbrush (*.PCX)**. Select and highlight the **Aligator.PCX** file and click **OK**. This will place the picture in **PC Paintbrush**.

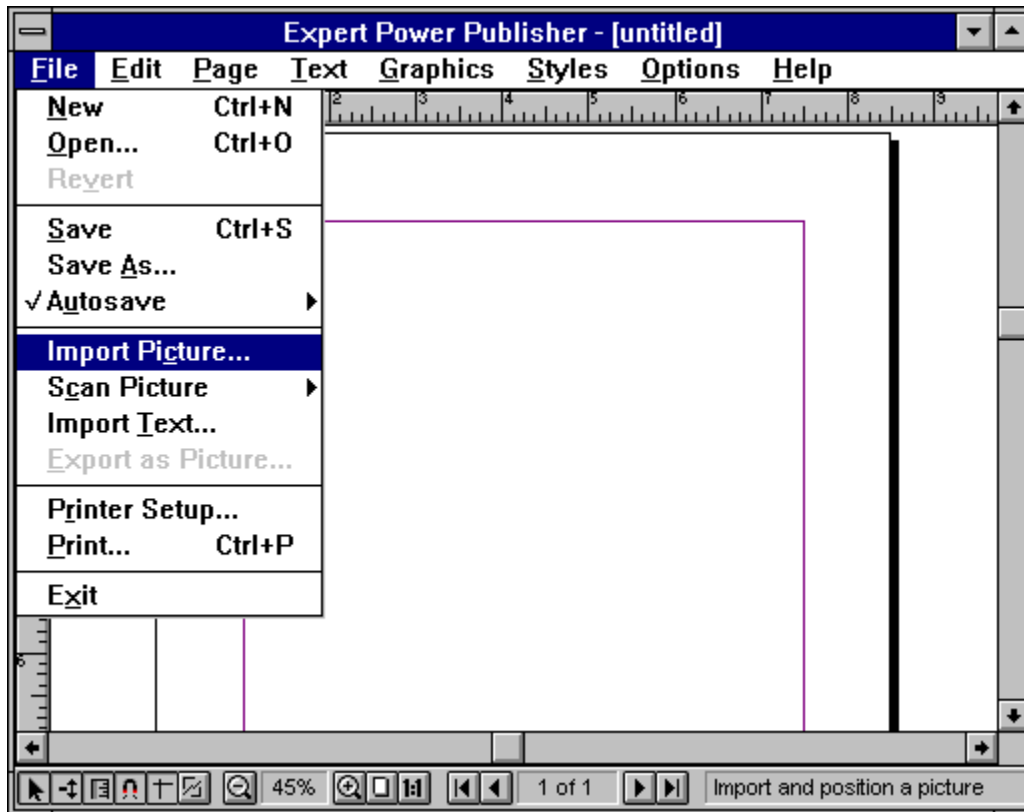


See Also:

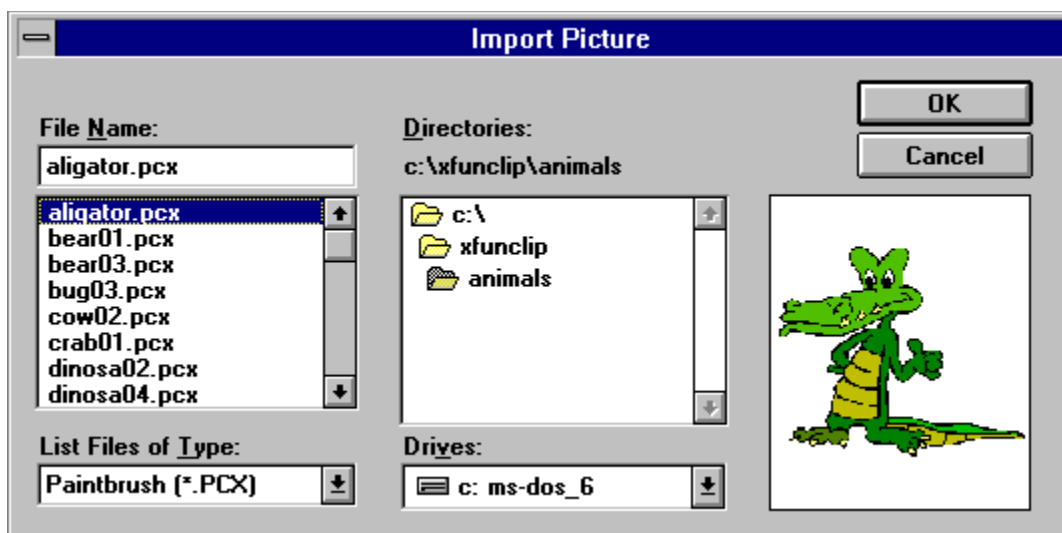
[Contents](#)

Expert Power Publisher

Step 1 Choose **File\Import Picture**

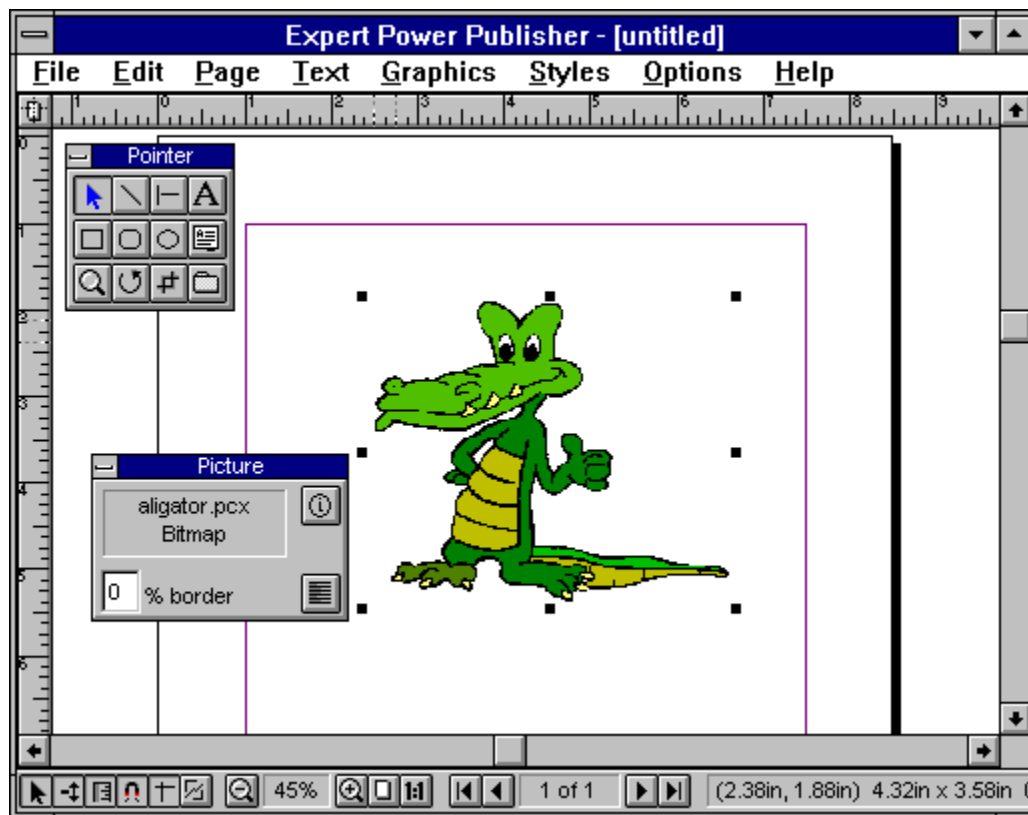


Step 2 Find the **Xfunc\clip\Animals** directory. Change the **List Files of Type** to **PC Paintbrush (*.PCX)**. Select and highlight the **Aligator.PCX** file and click on **OK**. This will bring the picture into the Expert Power Publisher document.



Step 3 Place the marker where you wish the image to appear and click on the left mouse button.

The image will now be placed in your document.



See Also:

[Contents](#)

