



# Just Tabs Help File

Are your customers missing key areas of your site? Tired of the same old looking web site? Need to organize your site, but don't have the time to work on all that HTML code? Introducing the most powerful new tool on the web for creating custom tabbed interfaces.....Just Tabs!!! Click the links below to find out how you can vastly enhance your web site's appearance and make it easy for your customers to find important areas of your site!

Look at what Just Tabs will do for you:

- Makes your site easier to navigate.
- Highlights important areas for your visitors.
- Create tab images on the fly for each caption.
- Create either vertical or horizontal tab views.
- Gives you many ways to customize your tabs.
- Create new HTML documents using the internal template.
- Search existing documents for Just Tabs tag definitions and replace source code automatically!

Show me more!

- [Visually designing your tabs](#)
- [Specifying your captions](#)
- [Inserting interface code](#) into your existing HTML documents.
- [Using the placement wizard](#)
- [HTML Tabbed Interface options](#)

Order your own copy now!

- Order online by going to <http://www.lincolnbeach.com/order.asp> now!
- [Ordering Just Tabs](#)

## Useful Tips:

To get your text to force a line break use a pipe symbol '|' between the words instead of a space.

To use the & symbol in your text enter it twice, such as: This && That

**EVALUATION COPY USERS:** The evaluation copy is fully functional, it does however watermark any output with a "Created by" link. This is not done with the full version. You are also limited to 20 uses of the program. In the full version the HTML templates used to generate the tab interfaces are external files and may be edited. To order [click here](#).

# HTML Interface Template Info

There are currently two templates that ship with Just Tabs, one for horizontal tabs and one for vertical. These templates contain all the instructions for generating the tabbed interface desired.

Along with the general HTML layout instructions there are several macro names that can be used to insert various options where desired. They are:

BACKGROUNDCOLOR

TABLEWIDTH

TABWIDTHSIZE

ACTIVETABCOLOR

ACTIVETABFONTCOLOR

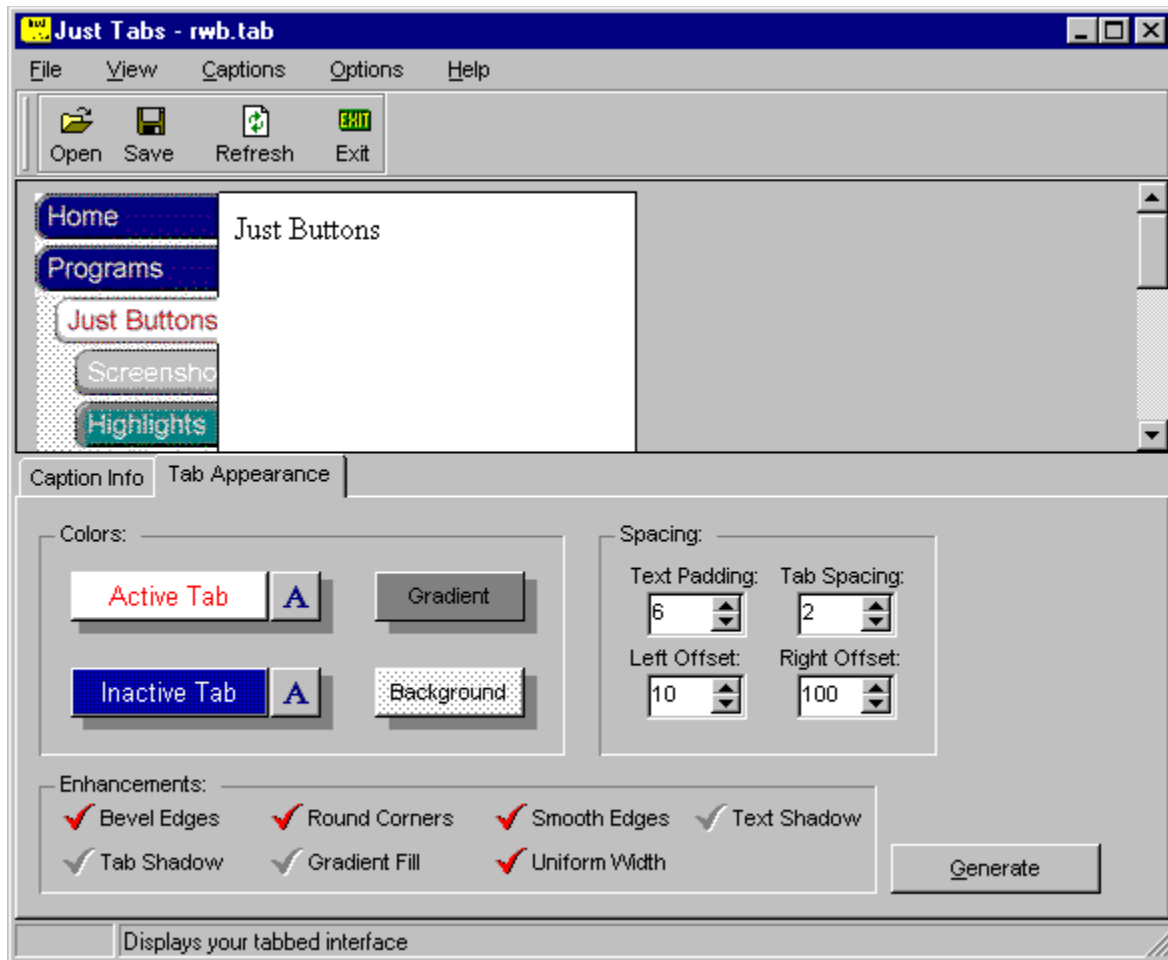
LEFTSPACING(used mainly for horizontal tab template)

RIGHTSPACING(used mainly for horizontal tab template)

MAXTABWIDTH(used mainly for vertical tab template)

Note: With the TABLEWIDTH setting the RIGHTSPACING option is not really necessary.

# Tab Appearance

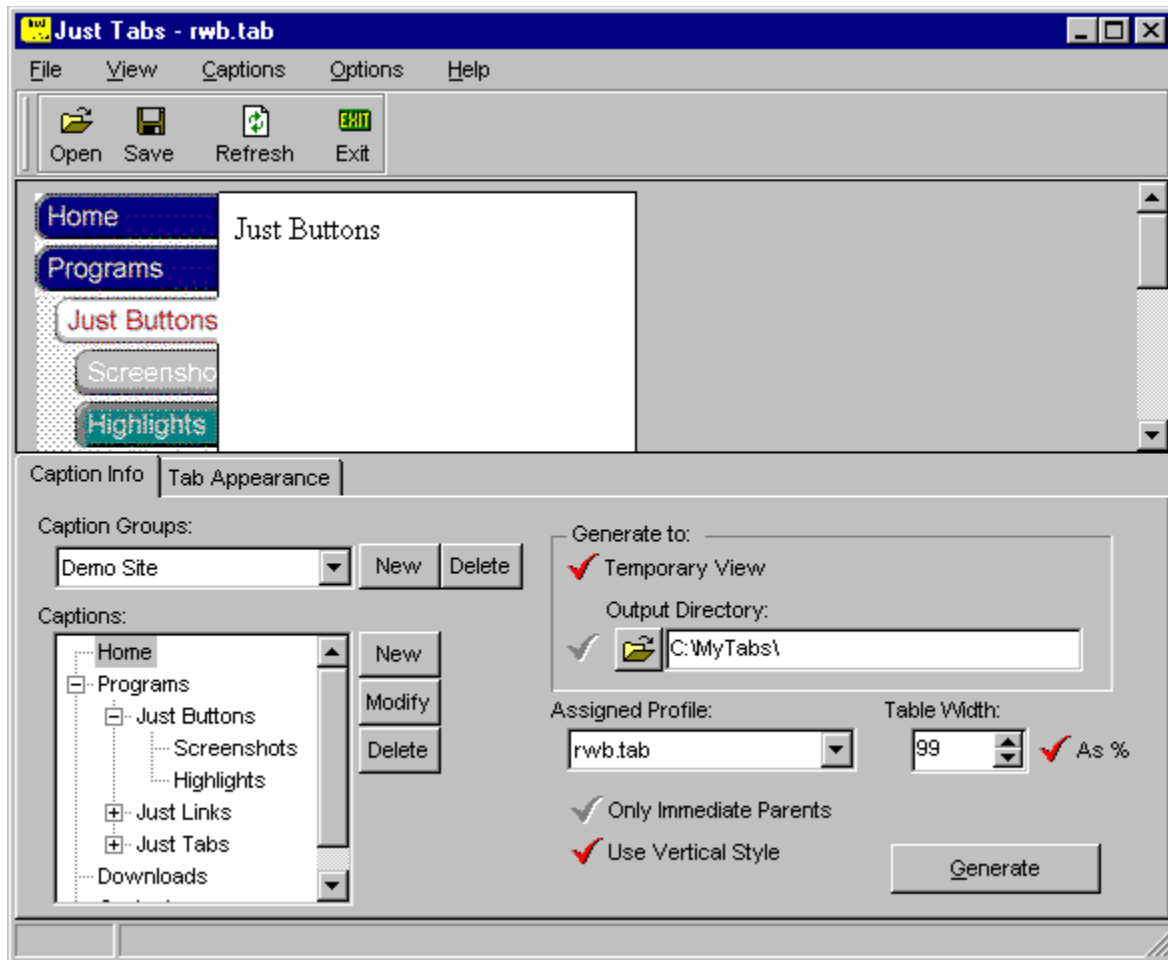


You can change the appearance of your tabs by adjusting the options shown above. Click on the Tab buttons in the **Colors** area to adjust the colors and fonts of the given tab. You may also change the background color and gradient color as well. The gradient color is only used if the **Gradient Fill** checkbox is checked and only inactive tabs utilize the gradient scheme. Active tabs will remain as a solid color. This can make for some nice shadowing effects in your tabs.

The **Enhancements** section lets you change various visual aspects of your tab. Click on the image above to find out what each option effects.

The **Spacing** area lets you adjust the spacing factors with each tab.

# Tab Captions



## Group Captions

To **create** a new group, click on the **New** button next to the **Group Captions** dropdown list. In the displayed edit dialog, enter your new group name, and click the OK button.

To **delete** a complete Caption group, and all tab settings in that group, click the **Delete** button next to the **Group Captions** dropdown list.

## Adding Captions to a Group

Click the **New** button next to the **Captions** listbox. An edit dialog box will be displayed for entering additional information for each tab. If a caption is currently select the new caption will be added as a child tab, otherwise it will be a root level tab. To make it so that no tab is selected click in the empty area or press the CONTROL key and click on the selected tab. This will set the tab view so that no tab is selected and any new item will be added as a root level item.

- **Text Caption** -This is the text that appears on the tab. If you would like to break the caption text into two lines, insert the pipe symbol, | , where the first line of text should end.

- **Local Filename** - This is the file on your hard drive that is either created or modified when generating the tab interface.
- **URL** - This is the URL that will be displayed by the browser when the tab is clicked. Most of the time, this URL is identical to the Local Filename.
- **Bitmap Filename** - This is the filename of the bitmap from your hard drive that you want to appear on the tab. Bitmaps have a maximum size of 16 pixels wide by 16 pixels high.

You can drag and drop your tabs to put them in different locations if you like. Dropping them on another tab will make it a child tab, dropping it in the left margin will make place it above the selected tab in that level.

### Use Vertical Style

Usually the tabs are displayed as a horizontal row. If you want the tabs to be displayed vertically, check the Use Vertical Style checkbox.

### Only Immediate parents

If you start getting to many levels in your tab layout it could get to overwhelming for your visitors to stare at all those tabs. This option will only display the selected node's parent node and it's siblings. In the screenshot above only "Just Buttons" and it's siblings would be displayed if the "Screenshot" tab was selected. The "Home" and "Programs" tabs would not appear. Clicking on the "Just Buttons" tab would bring these back up.

### Generate To

When you are experimenting with the visual appearance of your new web pages, you do not want to prematurely change your existing pages. By clicking the **Temporary View** radio button, new web pages generated by the program are placed in a temporary folder, so your existing pages are not overwritten. When you are satisfied with the new appearance, then click the **Output Directory** radio button, and set the folder location for new web pages that will be generated.

### Tab Profiles

A tab profile is a preselected base set of color and font settings that may be used for caption groups. To assign a tab profile to a group of tab captions, select the profile from the dropdown list. When the **Generate** button is clicked, your current group of tabs will be assigned the colors and fonts of the selected profile.

Check to have tab interface appear as vertical tabs.

Check this option to have only the parent level nodes displayed for a selected tab.

Create and modify caption groups here.

Pick a profile to use as a default profile for this tab set.

Select the area you wish to generate your interface to. Select Temporary if you do not wish to update your web pages directly.

Sets the width of the right side of the tabs. This is not needed if you specify a width in the table width setting.

Adds a small bevel to the edges of your tabs.

Sets the width of your table. Check the **As %** option to have your table's width appear as a percentage.

Click this button to select the background color for your table area.

Sets the distance that the tabs appear from the left edge of the table.

Adds a slight shadow to the caption text.

Sets the tab to appear with rounded corners.

Click this button to set the color of the active tab.

Click this button to set the color of the inactive tab.

Defines the space around the text from the edge of the tab.

Click to set the font of the active tab.

Click to set the font of the inactive tab.

Lets you quickly access several features within the program.

Specifies the distance between each tab.

Click the Generate button to refresh the preview panel with your tab design. You can click the Refresh button or press F5 as well.

Lets you see what your tabbed interface will look like.

Sets the color to merge to when the fill style is set to use a gradient fill.

Create the interfaces width option as a percent instead of a flat pixel count. So you will see `WIDTH="70%"` instead of `WIDTH="70"`.

Performs font and edge smoothing on the tabs that are generated.

Draws each tab with a slight shadow.

Sets all the tabs to the width of the largest tab.

Fills each tab with a gradient color specified by the gradient color button.

# HTML Insertion

You can easily insert your new tab interface by manually adding the comments below to your web page or by using the [Placement Wizard](#).

```
<html>  
<head></head>  
<body>
```

Some HTML text code here.....

```
<!-- JUSTTABS TOP OPEN -->  
<!-- JUSTTABS TOP CLOSE -->
```

The page content you wish to appear in the tabbed interface appears here

```
<!-- JUSTTABS BOTTOM OPEN -->  
<!-- JUSTTABS BOTTOM CLOSE -->
```

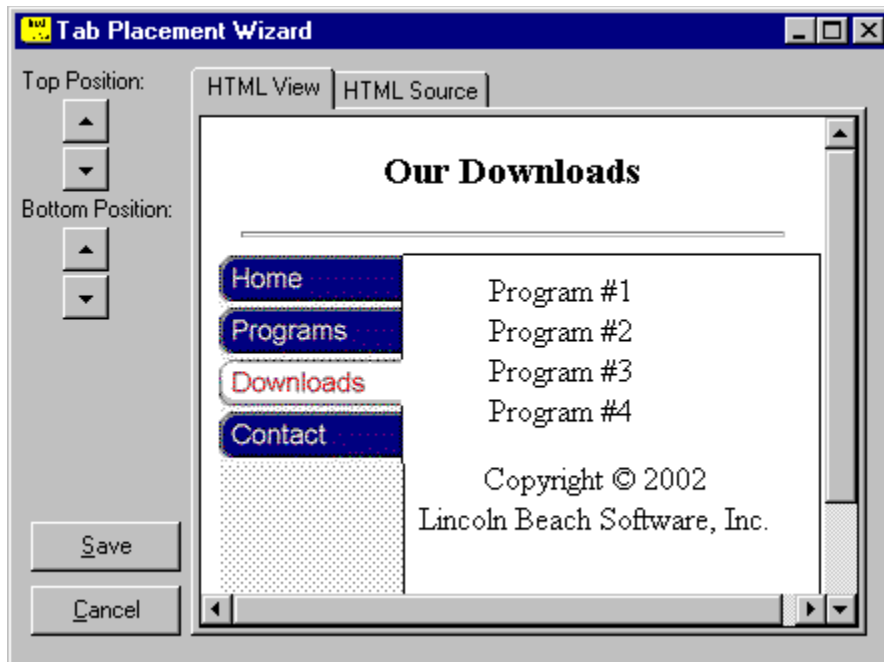
More HTML text code here.....

```
</body>  
</html>
```

The newly adjust template will be inserted into the appropriate areas in your web page.

**NOTE:** Each comment **MUST** appear as above to work correctly. The reason is that these comments are searched for when replacing sections of HTML code in your pages. If they are not found then the code can be altered appropriately.

# Tab Placement Wizard



When you choose to generate your tabset to your live pages by checking the checkbox by the "Output Directory" and the expected HTML comment tags are not found you will be prompted to insert them using the Placement Wizard. When you go this route the wizard gives you a general visual display of your page with the new tabs. Click on the arrows at the top to adjust what is to appear either inside or outside of the notebook.

Using the above screenshot as an example, click the up arrow beneath the Top Position caption will cause the top of the tabbed table to be moved up, in this can the <HR> tag would now appear inside the table. Clicking it again would bring the Our Downloads heading inside as well.

Likewise clicking the up arrow beneath the Bottom Position caption would cause the lower lines of text to be moved outside of the table.

To view the changes in the HTML source click on the HTML Source tab.

After you adjust it to your liking click the Save button to resume processing the remaining pages.

Use these arrows to adjust the start position of the notebook.

Use these arrows to adjust the ending position of the notebook.

# Icon Information

Just Tabs

Written by:

Lincoln Beach Software, Inc.

Copyright © 1999,2002

ALL RIGHTS RESERVED

<http://www.lincolnbeach.com>

Other Programs:

**Just Buttons:** Create stunning buttons for your website without needing any artistic ability!

<http://www.lincolnbeach.com/justbuttons.asp>

**Just Screenshots:** Bring your screenshots to life by giving them a 3D effect.

<http://www.lincolnbeach.com/justscreenshots.asp>

**Just Tabs:** Easily create tabbed interfaces for your website.

<http://www.lincolnbeach.com/justtabs.asp>

**Black Hole Organizer:** A great "web enabled" organizer to keep all your notes

<http://www.lincolnbeach.com/blackhole.asp>

**StarGate Link Boss:** Awesome tool for organizing all of your links, both local and web related!

<http://www.lincolnbeach.com/stargate.asp>

**Download Butler:** Manage and schedule your downloads with ease.

<http://www.lincolnbeach.com/butler.asp>

# Order Form - General

Just Tabs

Please answer the registration questionnaire below and return this form with your cash, check or money order to :

In The USA:

Lincoln Beach Software  
P.O. Box 1554  
Ballwin, MO 63022  
Phone: (636) 861-1500

Firm \_\_\_\_\_  
Cust. Name \_\_\_\_\_  
Address \_\_\_\_\_  
\_\_\_\_\_

Phone (\_\_\_\_) \_\_\_\_ - \_\_\_\_ Occupation \_\_\_\_\_  
Internet ID: \_\_\_\_\_  
Windows version \_\_\_\_\_  
Where did you get Just Tabs from:  
BBS Name \_\_\_\_\_ Number (\_\_\_\_) \_\_\_\_ - \_\_\_\_  
WWW location \_\_\_\_\_

Single User License..\_\_\_\_\_ QTY X ... \$ 19.95 ea \$ \_\_\_\_\_

Multiple User License.....\$CALL FOR QUANTITY PRICING

Email Address to send information to:\_\_\_\_\_

Total Enclosed ..... \$ \_\_\_\_\_  
Checks and money orders must be drawn on a U.S. bank. Please send all payments payable in U.S. Dollars.

If you could add something to Just Tabs what would it be?

\_\_\_\_\_  
\_\_\_\_\_

\*\*\*\*\*  
\*

VISA/MC/AMEX/DISCOVER ORDERS ONLY

This is an order service ONLY, for tech support or order confirmation please call 636-861-1500. THEY WILL NOT BE ABLE TO HELP YOU!!!

Order online by going to <http://www.lincolnbeach.com/order.asp> or call the following numbers. When ordering reference Product #42783-Just Tabs

Please note that these numbers are for ordering only and not for technical support. All order status inquiries should be phoned in to 636-861-1500.

To Order

Toll-Free Order Lines: 877-734-7638 Product #42783

International Calls: 770-497-9126 Product #42783  
FAX Orders: 770-497-9234 Product #42783



