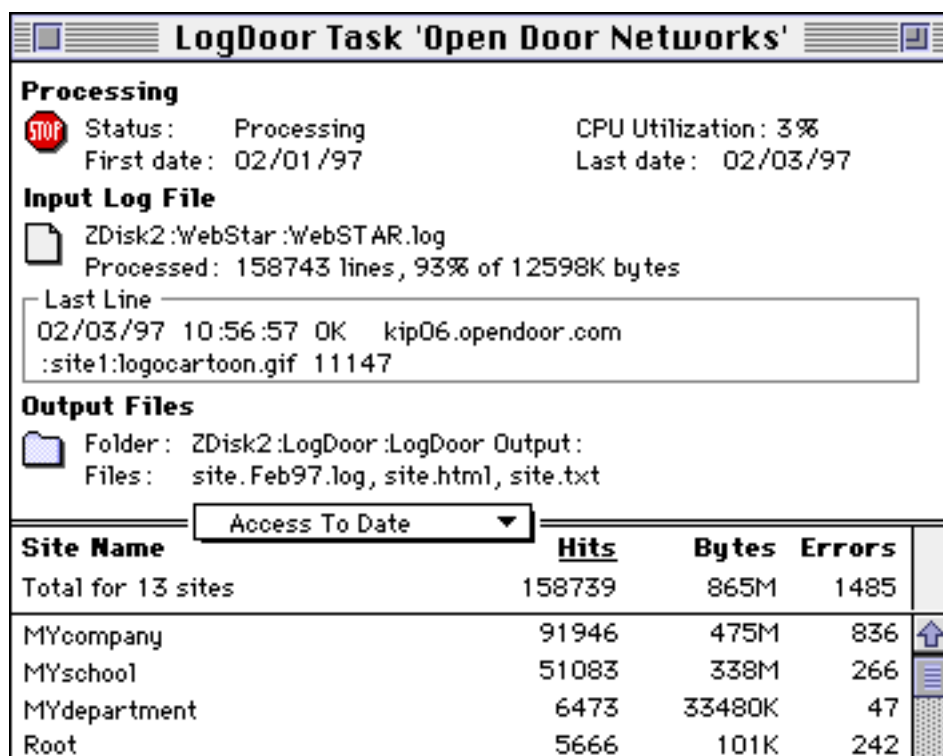


LogDoor User's Guide

LogDoor Windows

LogDoor's Task Status Window

A LogDoor task displays its current configuration and processing state in a task status window. This section describes the details of that window.



The upper part of the task status window consists of three sections displaying overall configuration and processing information.

Processing - this section displays the current processing state of the task (waiting, processing, writing summaries, etc.), an approximation as to the percent of CPU cycles which the task has used, and the earliest and latest dates which the task has encountered in log entries which it has processed.

- **NOTE:** the CPU Utilization field is a very rough approximation as to the amount of CPU cycles being used by LogDoor while processing. It is intended only as basis for comparison as to how busy LogDoor is, not as an exact measure of LogDoor's CPU usage.

Input Log File - this section displays the pathname of the log file which the task has been configured to process, how much of that file has been processed to date, and the last line of the file which has been processed.

Output Files - this section displays the pathname of the folder into which the task will write its output files, plus the name format (including the suffix) and types of the files which the task is currently configured to write.

The bottom part of the task status window provides an overall summary of the access information a task has

processed. This display lists the number of hits, bytes transferred and errors for each individual site that the task has encountered (within a particular date range), plus totals for the task as a whole. The date range of the display can be configured using the popup menu at the top of that display. Access information can be displayed for the current day, week (starting with Monday) or month, for the last 7, 10, 15 or 30 days, or to date since the task was started.

The bottom part of the task status window can also be sorted by site name, hits, bytes transferred or errors. To sort the display, either click on the desired column or select the sort order using the Sort menu item of the Windows menu. To view a particular site's entry, type the first letter of the site name. The first entry beginning with that letter will be selected.

Double-clicking on a site, or on the "Totals" line, in the task status window, will bring up a window displaying that site's day-by-day processing totals, essentially equivalent to what would be written to the summary reports at that time. The window also displays a bar graph of total number of hits to the site on a day-by-day basis, and the last several lines of the log file for that site (if log files are being written on a site-by-site basis).

The task status window display is based upon the task's processing state information, as stored in the task file. Although this information is generally derived from the input log the task is currently processing, this will not always be the case. For instance, if you use one task to process a series of input files, and do not reset the processing summary data between each input file, the display will represent the summation of the data from all the input files. Alternately, if you reset the summary data in the middle of processing a log file, then the display will no longer represent the information from the entirety of that file.

- **IMPORTANT:** the information written to the overall and site summary files is derived from this state information. Resetting the summary data resets all site-by-site state information and the hence summary files.

To remove an old site from the task status window, and from the state information associated with the task, select the site in the task status window and choose "Remove Site" from the Task menu. The site will be removed from the window, and no future log files or reports for the site will be written (unless a valid access to the site is encountered during subsequent processing).

- **NOTE:** Previous accesses to the site will continue to be included in overall totals for your server.

The task status window is refreshed on a periodic basis. If you wish to be sure that this window is up to date, choose "Refresh Status Window" from the Windows menu. If you do not want the task status window to be displayed at all, choose "Hide Task Status Window" from the Windows menu or click the window's close box. The task will continue processing regardless of whether the task status window is displayed or not.

- **NOTE:** the task status window is generally not updated while a task's processing is suspended. To be sure this window is up to date, either start the task running or select "Refresh Status Window".

LogDoor's Activity Window

LogDoor maintains a window displaying its recent processing activity. This window contains useful information about the LogDoor task's processing. This window can be hidden by choosing "Hide Activity Log" from the Windows menu.

