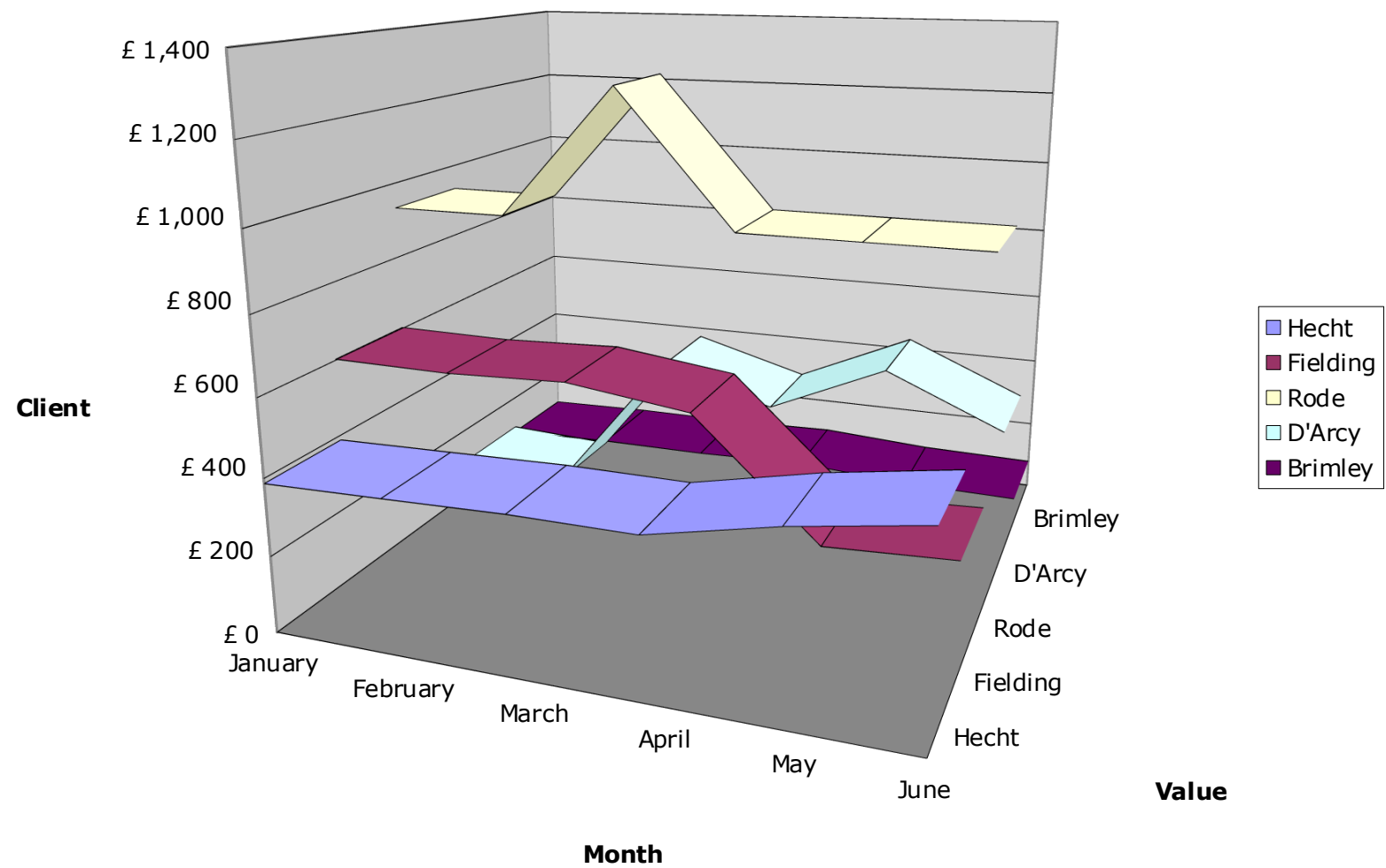


Client value Q1-2



Client/sales analysis

January-June 2002

	January	February	March	April	May	June
Hecht	£ 387	£ 394	£ 402	£ 401	£ 468	£ 518
Fielding	£ 603	£ 600	£ 612	£ 573	£ 288	£ 303
Rode	£ 934	£ 934	£ 1,280	£ 934	£ 934	£ 934
D'Arcy	£ 103	£ 88	£ 469	£ 383	£ 522	£ 388
Brimley	£ 87	£ 94	£ 94	£ 102	£ 83	£ 78
Total	£ 2,114	£ 2,110	£ 2,857	£ 2,393	£ 2,295	£ 2,221
Mean	£ 423	£ 422	£ 571	£ 479	£ 459	£ 444
SD	£ 357	£ 358	£ 439	£ 305	£ 316	£ 317





Total	Mean	SD
£ 2,570	£ 428	£ 53
£ 2,979	£ 497	£ 156
£ 5,950	£ 992	£ 141
£ 1,953	£ 326	£ 186
£ 538	£ 90	£ 9

