

CompuServe CD File Finder

CompuServe's File Finder allows you to search for files across a number of CompuServe Forum libraries. This CD edition of the File Finder is full-text searchable and contains two useful views. The first will provide you with a quick reference to the thousands of graphic images available in our Graphics Forums. The second contains tens of thousands of IBM compatible software.

With this utility, you can perform all of your searching OffLine and save. Mark the files that interest you, then use the CompuServe CD Outbasket to retrieve them all at once. You will be billed standard CompuServe connect rates for these downloads.

When you run the CompuServe CD File Finder, the following dialog box will appear. Click on any region in the graphic below for specific information about specific File Finder features.

CompuServeCD File Finder

File Edit Options Help

CompuServe File Finder

Search: IBM File Finder Forum: All Forums

Any Text:

Filename: Submit Date: After

Contributor: Accesses: Over

Search Clear All Help Exit

Marked: 0 files

[Click Here to find out what's new and improved](#)

Select File Finder

This control allows you to select whether you wish to search the IBM File Finder or the Graphics File Finder. The list of Forums searched will change depending upon your selection.

Which Forum

This control will allow you to narrow your search to a specific forum -or- specify that the search should cut across all of the forums in this list.

Full Text Search

If you wish to search for a word that appears anywhere in that files description, you should use this full text search option. This field supports simple Boolean logic, so you may enter that one word separated by AND or OR.

Filename

This field is used to search for text appearing anywhere in the file's name or extension. If you know the exact filename that you are looking for, you may enter it here as well. This field does not support DOS wildcards (like the * and ? characters).

Date

If you wish to narrow your search by including a date range, this is where you would specify that information. First, enter a date in the field on the right, then use the list on the left to specify whether you want to list files before or after date in question.

Contributor

If you know the User ID number of the person who submitted the file(s) to the CompuServe forum libraries, then you may enter that ID number in this field. If this field is used, it must contain a valid CompuServe ID number -and- not a personal name.

Message

As your mouse cursor passes over controls on the File Finder dialog, additional information will be displayed on this line.

Accesses

You can use this field to narrow files based upon the number of times others have accessed it. For example, you might only want to list files that have been downloaded by over 1000 other people.

Include Descriptions

When this control is checked, the File Finder will include the complete descriptions of each file in the resulting printout. If it is not checked, only the file's one-line titles will be used.

Help Button

The Help button brings you here, to this screen.

Cancel Button

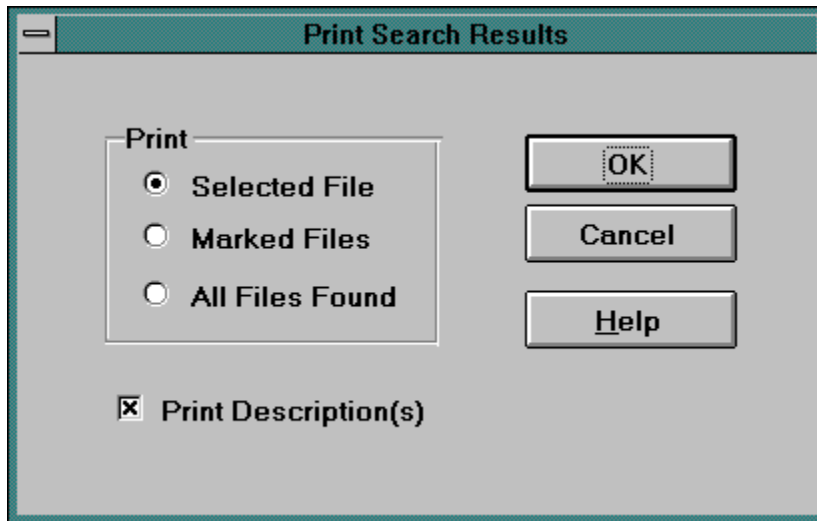
Use this button to return to the previous screen.

Return Button

Use this button to return to the main File Finder search screen.

Print

Use this button to print the results of your search. Click on a region in the following dialog for additional details.



Use these options to select what you want the File Finder to print. Be forewarned that you will be using a lot of paper if you opt to print all of the files in the File Finder database. It is recommended that you use this option to print the details of a single selected file -or- the files you have marked for downloading.

List of Marked Files

This is a list of your marked files (including the forum name, file title, and file size).

Retrieve All Button

Use this button to begin downloading your marked files.

Unmark Button

Use this button to remove an item from the list of marked files.

Close Button

Use this button to return to the Search Results screen.

Retrieve Marked

This dialog will display all of the files that you have marked for downloading. Click on a region in the following dialog for additional details.

Retrieve Marked Files			
Forum	Title	Filename	Size
OS2SUPPORT	Summary of files in OS2SUP LIB 12 as of 11/02/94	SUPL12.SUM	1,033
NTDEV	How to Correct Floppy Install Problems	INSTAL	4,100
DTPBVEN	PagePlus Intro from Serif	PPINTR.ZIP	1,295,186
WINAPF	WinZip 5.5 with Built-in ZIP & UNZIP; Drag & Drop	WINZIP.EXE	275,324
WINAPD	Typecase Font Fix for Windows	FIXTC.ZIP	856,253
WINAPD	MetaDesign 4.0 MR2 Patch Kit	DESMR2.ZIP	273,791

Retrieve All

Save

Load

Unmark

Close

Retrieve Button

Use this button to retrieve the selected file immediately.

Mark/Unmark Button

Use this button to add or remove an item from the list of files marked for later retrieval. Another way to accomplish this would be to click in the small square to the left of the title with your mouse -or- select the file with the arrow keys on your keyboard and press the <SPACEBAR>.

Total File Size

This is where the File Finder will display to total number of bytes marked for retrieval. You may use this information to determine how long it will take (and how much it will cost) to download the marked files.

Number of Files Found

This is where the File Finder will display the number of files that have been found to meet your search criteria.

Description

This is the complete file description offered by the person who contributed this file to the CompuServe Information Service.

Keywords

The OnLine version of CompuServes File Finder is not full-test searchable. These are the keywords that you could use to search for the file if you were to visit the OnLine forum or File Finder.

File Details

This is where the nitty-gritty details of each file are displayed, including in what forum the file can be found, the file's exact file name, the number of times that this file has been accessed (i.e. downloaded) by other CompuServe members, who contributed the file, the file's size (in bytes) and the date that the file was submitted/uploaded to CompuServe.

Search Results

This window contains the results of your search. If you click on a file title with your mouse (or select the file with the arrow keys and press the <ENTER> key), a complete description will appear in the description window below. If you wish to mark the file for later retrieval, click within the small square to the left of the file's title (or press the <SPACEBAR> on your keyboard).

Search Button

The following dialog will appear after a search has been successfully completed. Click on a region in the following dialog for additional details.

CompuServeCD - Search Results

File Edit Options Help

Search Results:

- ☐ MailCheck Version 2 Demo
- ☐ MailBot: Personal E-Mail Agent (Word 6.0)
- ☐ Summary of files in OS2SUP LIB 12 as of 11/02/94
- ☒ WinZip 5.5 with Built-in ZIP & UNZIP; Drag & Drop
- ☐ How to Correct Floppy Install Problems
- ☐ EVA: sample newspaper front page, German text
- ☐ First bitmap graphic for EVA.ZIP sample
- ☐ Second bitmap graphic for EVA.ZIP sample
- ☐ PagePlus Intro from Serif
- ☐ Information on PagePlus 3.0 patch file

Selected File:

Forum: WINAPF	File Name: WINZIP.EXE	Accesses: 211
Contributor: 70056,241	File Size: 275,324	Submit Date: 08/22/94

Keywords: ASP ZIP UNZIP INSTALL UNINSTALL WINZIP DRAG DROP Phase3 Software

WinZip 5.5 ZIP Utility

New: Install, try, & UNINSTALL software in ZIPs!

Brings the convenience of Windows to Zipping
PKZIP is not needed for basic ZIP operations

Found: 3022 files Marked: 0 files

Clear Button


Use this button to begin a new search. It will clear all of the search criteria on the screen and reset the search to the maximum number of files available.

Exit Button

Press this button to exit the CompuServe CD File Finder.

Save Button

This allows you to save the marked files for later retrieval. Enter a name for the set of marked files you are going to save in this box.



A screenshot of a Windows-style dialog box titled "CompuServeCD File Finder". The dialog has a light gray background and a dark green title bar. Inside, there is a label "Enter a name for this set of marked files:" followed by a text input field. The input field contains the text "Saved on 2/1/95" in blue. To the right of the input field are two buttons: "OK" and "Cancel".

CompuServeCD File Finder

Enter a name for this set of marked files:

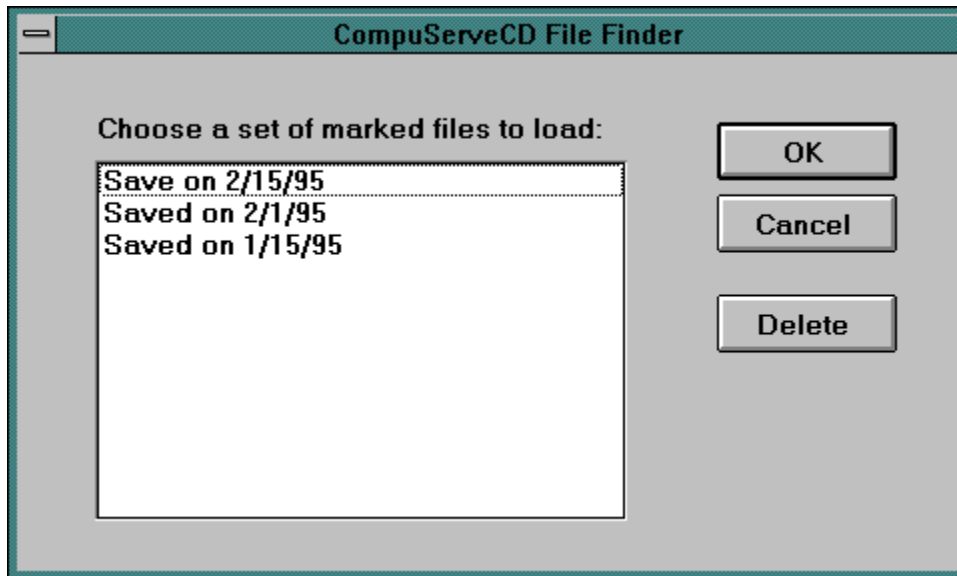
Saved on 2/1/95

OK

Cancel

Load Button

This allows you to load a set of MARKED FILES that you have saved. Click on a region in the following dialog for additional details.



Delete

Use this button to delete a set of marked files that had been saved.

Print All

Select this option when you want to print ALL of the files that were found.

Print Selected File

Choose this option when you would like to print only the file that is currently selected.

Print Marked Files

Choose this option when you would like to print all of the files that are marked.

OK Button

This button will begin printing the files you have choosen.

Load Marked Files

These are sets of files that have been saved. Click on the set you wish to load.

OK Button

This button loads the selected set of marked files.

What's New and Improved

Here are the enhancements that we've made to the File Finder:

- New Communications Routines

In order to improve communications between CompuServe and the CompuServeCD File Finder several changes were made to the program. These changes should result in improved file transmissions by improving reliability and efficiency. The changes were made in such a way that they should not look different at all.

- Load and Save Marked Files

We have added the ability to save a set of marked files. This set can then be loaded and retrieved later. To use this feature you must access the FILE menu and choose to Save or Load a set of marked files

Thanks to the input of our subscribers we have been able to implement some of the changes that you asked for. Please continue to supply us with your comment, concerns, and suggestions and we will continue to add those ideas to the CompuServeCD.

[Click here to find out how to contact Customer Service](#)

Contacting Customer Service

CompuServeCD Support Forum

If you have any questions or need assistance, try CompuServeCD's free Support Forum (GO CCDSUPP) on CompuServe. Post your question or problem to the message board and we'll get back to you with an answer in 24 hours or less.

Customer Service Telephone Numbers

800.848.8990	USA
614.529.1340	Canada
0130.86.4643	Germany
0800.289458	UK
Azur: 36.63.81.31	France

Subscriptions

Get online with CompuServe and type GO CCD for the ordering menu.

