

# Chapter 1

## INSTALLATION

This chapter discusses the system requirements and installation of the Readiris software.

### SYSTEM REQUIREMENTS

---

This is the minimal system configuration required to use Readiris:

- ☐ a 486 based Intel PC or compatible. A Pentium based PC is recommended.
- ☐ 16 MB RAM. 32 MB RAM is recommended under Windows NT and to make use of the “Connect” capability.
- ☐ 30 MB free disk space. 40 MB of disk space is needed if you install the electronic manual on the hard disk.
- ☐ the Windows 98, Windows 95 or Windows NT 4.0 operating system.

Note that some **scanner drivers** may not work under Windows NT! Refer to the documentation supplied with your scanner to see which platforms are supported.

### INSTALLING THE READIRIS SOFTWARE

---

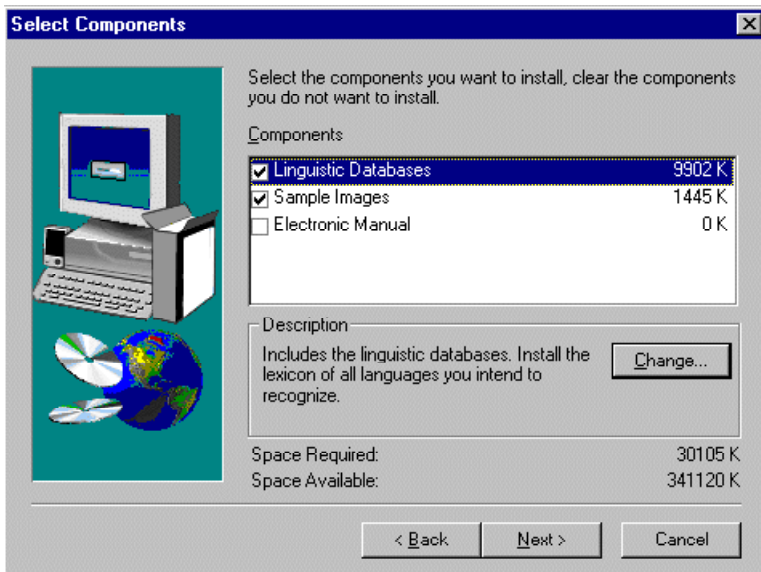
The Readiris software is delivered exclusively on an **autorunning CD-ROM**. To install, simply insert the CD-ROM in your CD-ROM drive and wait for the installation program to start running. Follow the on-screen instructions.

Should the installation not begin to run when the CD-ROM is inserted in your CD-ROM drive, run the setup program *setup.exe* to install the software.

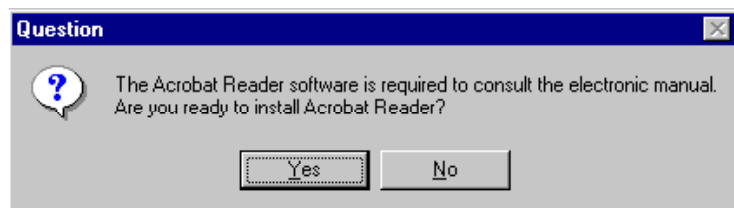


Users of Windows NT must ensure that they have the necessary **access rights** - contact the system administrator if necessary.

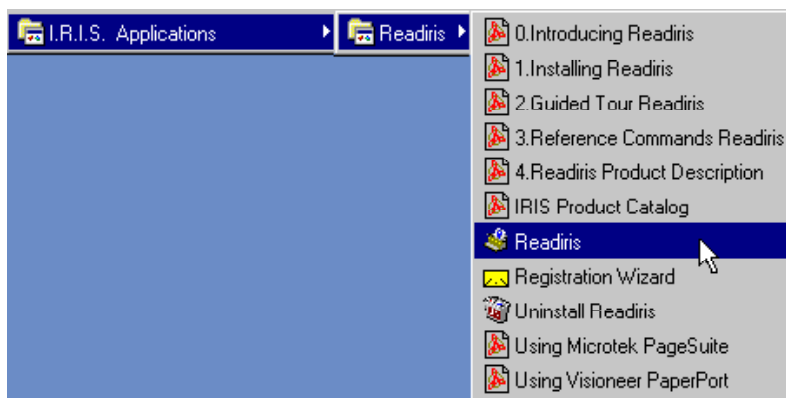
Some installation options are offered. Be sure to install the **linguistic databases** of all languages you intend to read. By default, all lexicons are installed. You are recommended to install the **sample images** which are used in the tutorials of this manual.



By default, the **electronic manual** remains on the CD-ROM but the necessary shortcuts are created. You can also copy it to your hard disk. It is supplied in the Adobe Acrobat PDF format. Be sure to install the Acrobat Reader software required to access the software documentation, should this be necessary.



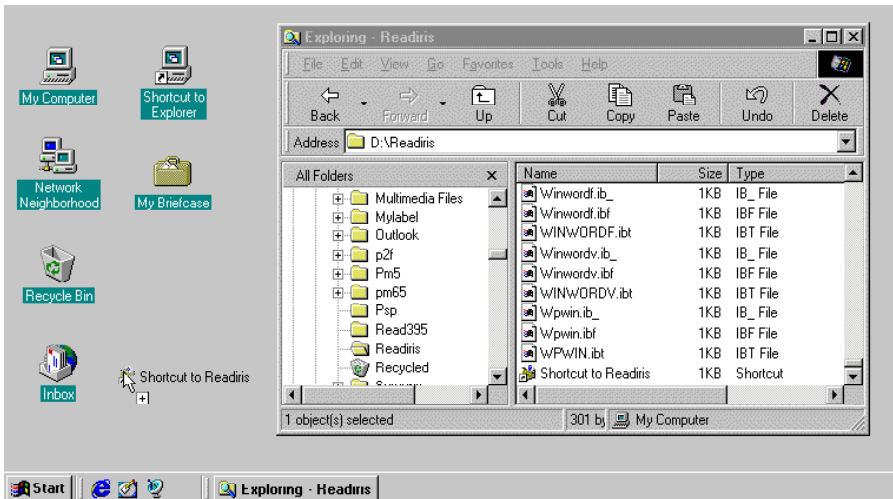
The submenu "I.R.I.S. Applications - Readiris" under the "Programs" menu is created automatically by the installation program.



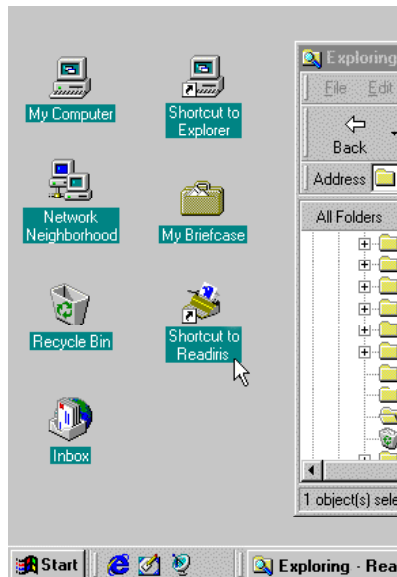
## COMFORT ISN'T LAZINESS!

Some additional steps can be completed for maximal ease of use of Readiris.

It may be useful to create a **shortcut**. The Windows documentation and on-line help discuss several methods of creating shortcuts. One easy way of proceeding is by dragging the Readiris application from the Windows Explorer to your desktop.



As a result, you'll be able to start the Readiris software directly from your desktop.



## INSTALLING THE “CONNECT” CAPABILITY

Installing the “Connect” capability implies some **manual steps** which no installation program can take care of.

The information needed to install the “Connect” capability can be found in the Readiris on-line help system and in the file CONNREAD.DOC.



For optimal comfort, the “Read Me” file on the “Connect” capability is displayed automatically at the end of the installation program, otherwise it is available under the Readiris folder.

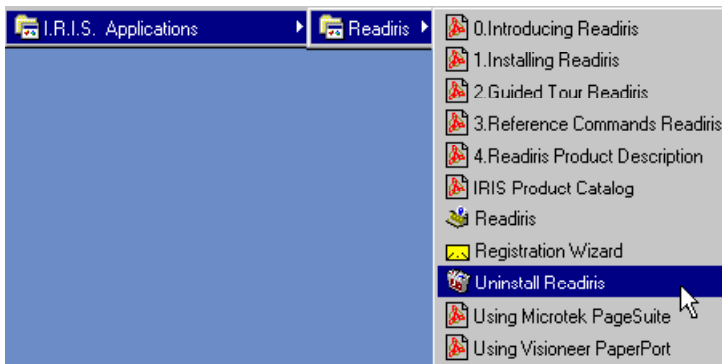
## **UNINSTALLING THE READIRIS SOFTWARE**

---

There are only two correct ways of uninstalling Readiris: using the Readiris “uninstall” program and using the Windows (un)install wizard. You are strongly recommended *not* to uninstall Readiris or its software modules by manually erasing the program files.

### **Readiris “uninstall” program**

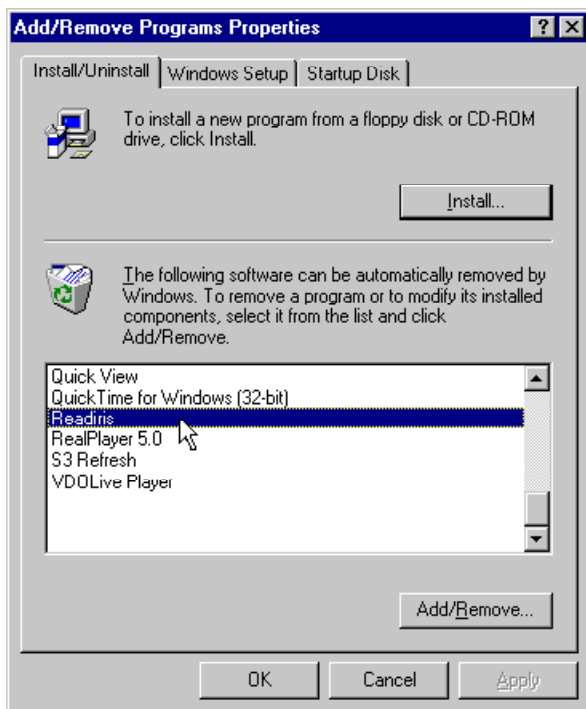
Select "Uninstall Readiris" under the submenu "I.R.I.S. Applications - Readiris" to start the Readiris “uninstall” program and follow the on-screen instructions.



### **Windows (un)install wizard**

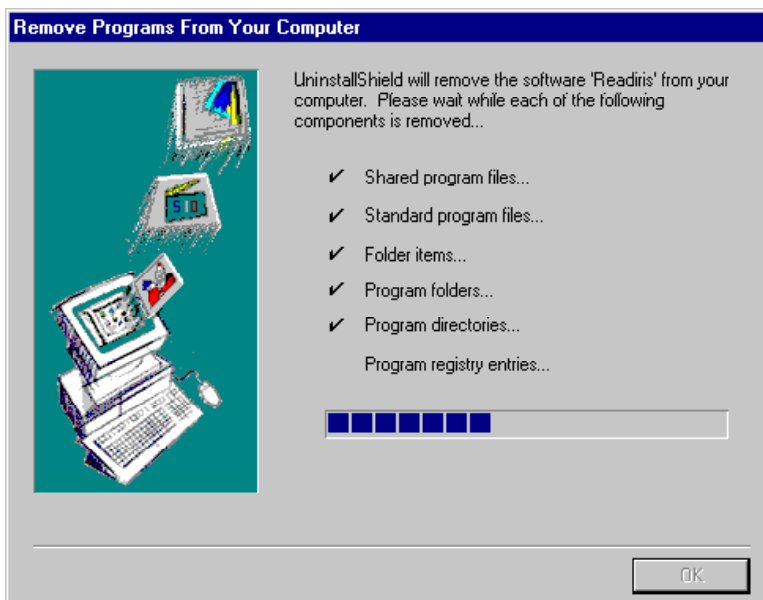
Execute the following steps to make use of the Windows (un)install wizard.

- ☐ Click "Settings" under the "Start" menu of Windows and go to the "Control Panel".
- ☐ Click the icon "Add/Remove Programs" under the control panel.
- ☐ Readiris is listed under the "Install/Uninstall" tab.



- ☐ Select Readiris and click the "Add/Remove" button to remove the Readiris software.
- ☐ Follow the on-screen instructions.



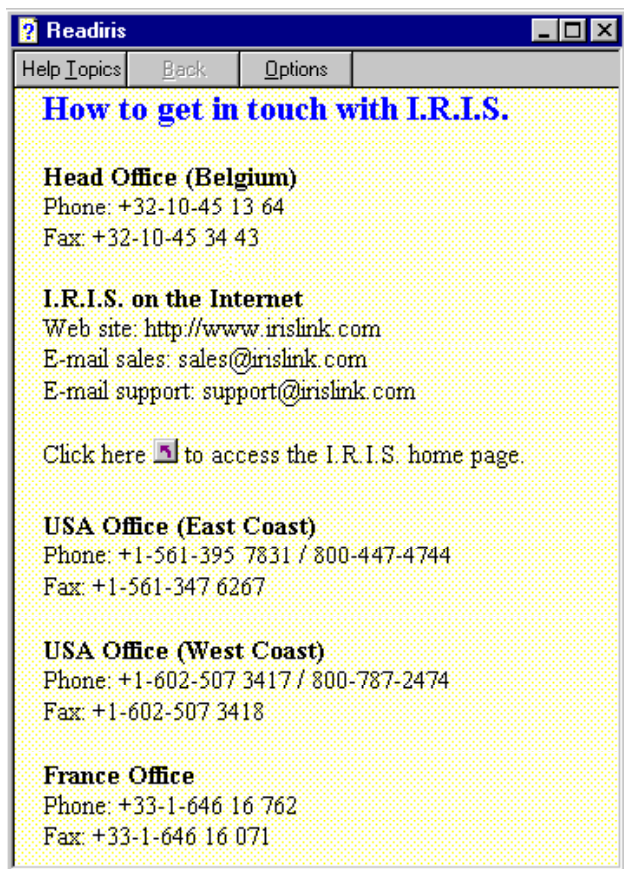


## INSTALLING RELATED PRODUCTS

Depending on the software bundle you acquired, Readiris may be supplied with an evaluation version of the related products Cardiris, a **card organizer**, and the **archiving software** Paper2File.

If these free software packages are included on your Readiris CD-ROM, they are equally installed using the autorunning CD-ROM and following the on-screen instructions.

Contact I.R.I.S. to learn more about these complementary software packages; the command "Contact I.R.I.S." under the "Help" menu of Readiris details in which ways you can get in touch with I.R.I.S.



## **INSTALLED FILES**

---

The installation program has created a folder where the Readiris files are located. Never try to uninstall Readiris or some of its modules by manually erasing the program files, use the Readiris “uninstall” program or the Windows (un)install wizard instead. See above.

### **Read Me files and documentation**

README.DOC	General “Read Me” file
CONNREAD.DOC	“Read Me” file on “Connect” capability

Depending on the software bundle you acquired, the Readiris CD-ROM may contain some additional “Read Me” and Acrobat PDF files - these files are *not* installed on your hard disk!

They discuss how to set up the multilanguage support of Windows - this Windows “service pack” is mandatory to recognize “exotic” languages such as Greek and the Cyrillic languages - and the “Twunk” (“Twain thunk”) software utility to solve some problems with Twain drivers.

You may also find specialized manuals concerning the scanning platforms Visioneer PaperPort and Microtek PageSuite on the CD-ROM.

### **User files**

The user can create font dictionaries, zoning layouts and settings files.

*.DUS	Font dictionaries
*.WDW	Windowing templates
*.IBT	Readiris settings

## **REGISTER TO VOTE!**

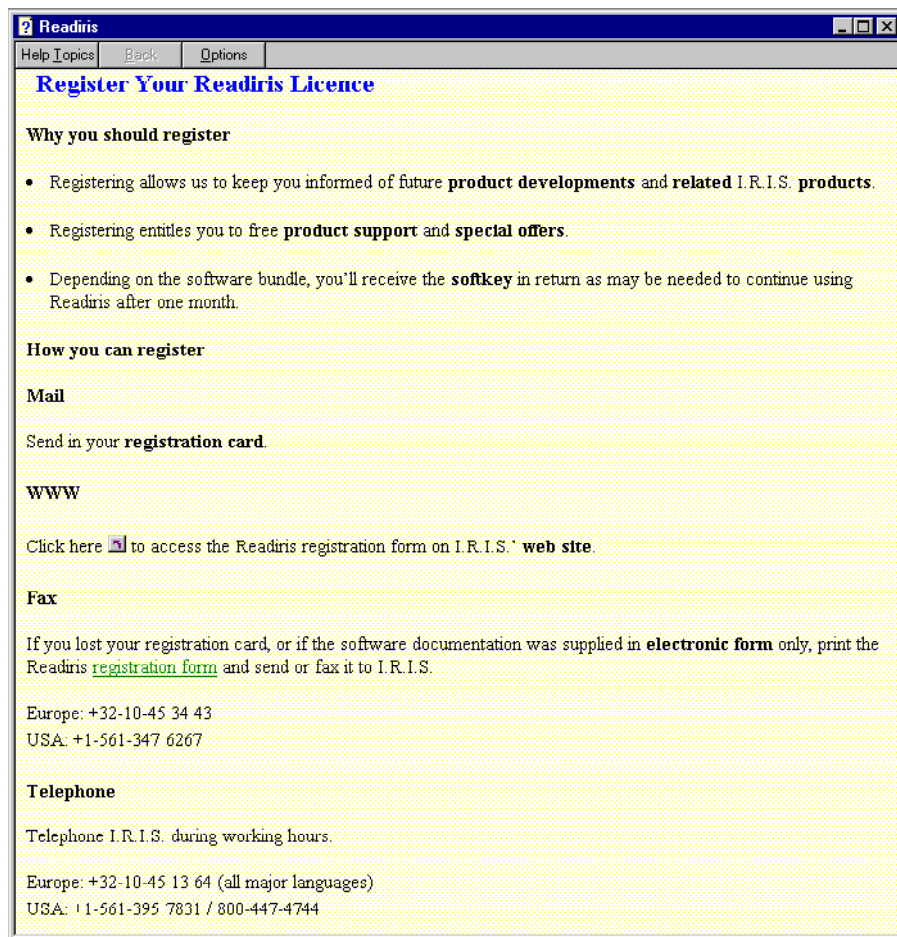
---

Don’t forget to register your Readiris licence! Doing so will allow us to keep you informed of future product developments and related I.R.I.S. products. The



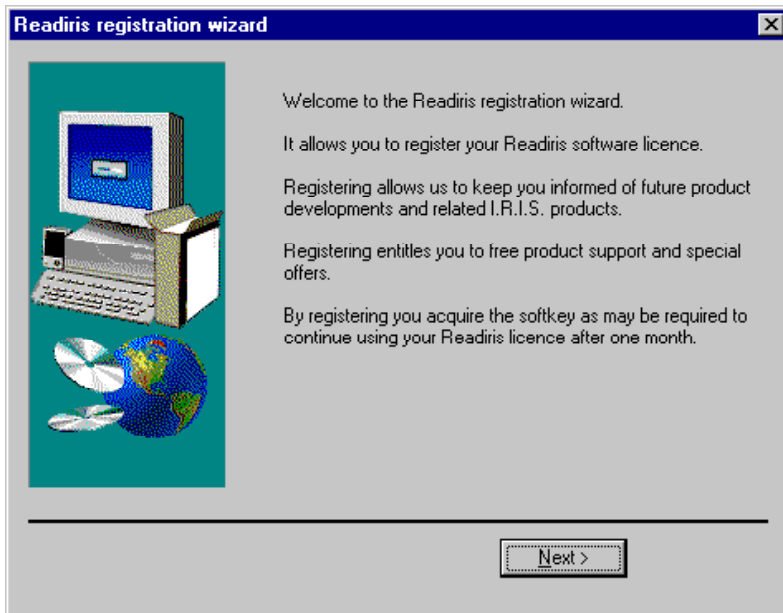
registration benefits, including free product support and special offers, are strictly limited to registered users.

You can register in many ways: by sending in your registration card or faxing its electronic counterpart, by calling I.R.I.S. during working hours and by filling out a registration form on the I.R.I.S. home page!





The Readiris **registration wizard** as you'll find under the submenu "I.R.I.S. Applications - Readiris" can guide you through the registration process comfortably.



Depending on the software version you acquired, you'll receive the **softkey** in return as may be needed to continue using the Readiris software after one month.

## GETTING PRODUCT SUPPORT

---

The command "Product Support" under the "Help" menu of Readiris details how you can get technical support. Please describe the phenomenon you experi-

ence clearly and include all relevant data concerning Readiris, your scanner and your computer system.

