

Help Groups



[Color](#)



[Paper](#)



[Set Up](#)



[Application Notes](#)



[Printer Notes](#)



[Miscellaneous](#)



[Troubleshooting](#)



[Readme.txt](#)



[Index](#)

Help index

A

- [Aldus Applications](#)
- [ANSI](#)
- [Architectural](#)
- [AutoCAD for Windows](#)
- [Automatic](#)

C

- [Calibrate Screen](#)
- [Canceling a print from your application](#)
- [Cluster](#)
- [Color as grayscale](#)
- [ColorSmart](#)
- [Configuration name](#)
- [Convert colors to pure Black](#)
- [Copies](#)
- [CorelDRAW/PHOTO-PAINT users](#)
- [Custom paper size](#)
- [Custom paper size limits](#)
- [Customer Support](#)
- [Custom size](#)

D

- [DIN](#)
- [Driver margins table](#)

E

- [Examples of halftoning](#)
- [Excel users](#)

F

- [Font support and recommendations](#)

G

- [General Information - Software Applications](#)
- [General Troubleshooting](#)

H

- [Halftoning](#)
- [How to calculate a printable area](#)
- [HP DesignJet 200, 220, 230 and 250C printer notes](#)
- [HP DesignJet 600, 650C, 750C and 755CM printer notes](#)
- [HP DesignJet printer notes](#)
- [HP DesignJet series printers](#)

I

- [ISO](#)

J

- [JIS](#)

L

- [Loading sheet paper](#)
- [Long-axis prints](#)

[Lotus Applications](#)

M

[Manual Color](#)

[Margins table](#)

[Match Screen](#)

[Memory Problems](#)

[Micrografx Designer \(v4.0 & v4.1\) users](#)

[Microsoft Application users](#)

[More sizes](#)

N

[No Adjustment](#)

[Normal](#)

[Notes to ATM font users](#)

O

[Orientation](#)

[Oversize](#)

P

[PANTONE®* Colors](#)

[Paper Size List](#)

[Paper Source](#)

[Paper Type](#)

[Pattern](#)

[Print Quality](#)

[Printable areas](#)

[Printed Color Control](#)

[Printer Notes](#)

[Printer Type](#)

[Printing areas](#)

[Process document in the computer](#)

Q

[QuarkXPress users](#)

R

[Readme.txt](#)

S

[Scatter](#)

[Screen Calibration](#)

[Software Application notes](#)

[Software Publishing Corporation Harvard Graphics \(v2.0 & v3.0\) users](#)

[Supported Printers](#)

T

[Troubleshooting - General](#)

[Troubleshooting printer problems](#)

U

[Used standards](#)

[User-defined Size](#)

[User configurations](#)

[Users of paint and image-processing applications](#)

V

Vivid Color

**** Help groups start here**

Color topics

Click on any of the following topics to know more about that subject:



- [Automatic](#)
- [Calibrate Screen](#)
- [Color as grayscale](#)
- [ColorSmart](#)
- [Convert colors to pure Black](#)
- [Halftoning](#)
- [Match Screen](#)
- [Manual Color Control](#)
- [No Adjustment](#)
- [Normal](#)
- [PANTONE®* Colors](#)
- [Printed Color Control](#)
- [Vivid Color](#)

To return to the **Help Groups Index** click on **Contents**.

Media topics

Click on any of the following topics to know more about that subject:



- [Custom paper size](#)
- [Custom paper size limits](#)
- [How to calculate a printable area](#)
- [Loading sheet paper](#)
- [More sizes](#)
- [Orientation](#)
- [Oversize](#)
- [Paper Size List](#)
- [Paper Source](#)
- [Paper Type List](#)
- [Printable areas](#)
- [Used standards](#)
- [User-defined Size](#)

To return to the **Help Groups Index** click on **Contents**.

Setup topics

Click on any of the following topics to know more about that subject:



- [Copies](#)
- [Defaults - Color Control dialog box](#)
- [Defaults - Options dialog box](#)
- [In printer/computer](#)
- [Long-axis prints](#)
- [Orientation](#)
- [Paper Sizes dialog box](#)
- [Paper Type](#)
- [Print Quality](#)
- [Setup dialog box](#)
- [Supported Printers](#)
- [User configurations](#)

To return to the **Help Groups Index** click on **Contents**.

Miscellaneous topics

Click on any of the following topics to know more about that subject:



[What is ANSI?](#)

[What is Architectural?](#)

[What is DIN?](#)

[What is ISO?](#)

[What is JIS?](#)

To return to the **Help Groups Index** click on **Contents**.

Troubleshooting topics

Click on any of the following topics to know more about that subject:



[General Information](#)

[General Troubleshooting](#)

[Canceling a print from your application](#)

[Customer Support](#)

[Memory Problems](#)

[Readme.txt](#)

[Software Application notes](#)

[Troubleshooting printer problems](#)

To return to the **Help Groups Index** click on **Contents**.

**** Dialog box descriptions start here.**

Setup dialog box help

The contents of the **Options** dialog box match the capabilities of the currently selected printer, for help specific to the **Options** dialog box for your printer, click the **Options** button in the **Setup** dialog box, then click the **Help** button.

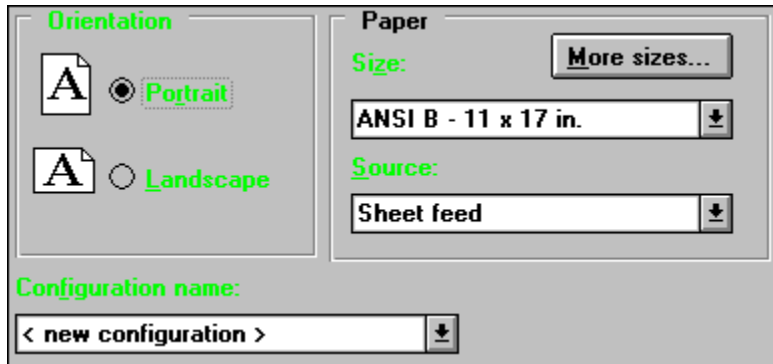
To access the **Print setup** dialog box in Windows 3.1:-

from the **Program Manager** window open the **Main** window and double click **Control Panel**, double click **Printers**, and with your output device selected, then click the **Setup...** button.

To access the **Print Setup** dialog box in Windows 95:-

from the desktop click on **Start**, and select **Settings** and then click on **Printers**. In the **Printers** dialog box click on your HP DesignJet printer icon with the *right mouse button*, and select **Properties** from the pop-up menu. Click on the **Details** tab and click on the **Setup** button.

Choose one of the highlighted **text fields** for more information:



Notes: 1) Please note that the settings in this **Setup** dialog box may have a *global* effect. Depending on the behavior of your application, the settings may be valid for all your applications.
2) The appearance of the print setup dialog box may vary from the example shown above, however the behavior of the settings you enter is the same.

Associated topics:

[Custom paper size](#)

[More sizes...](#)

[Options - HP DesignJet 250C, 650C \(B-series\), 750C & 755CM](#)

[Options - HP DesignJet 200, 220, 230, 600, & 650C \(A-series\)](#)

Color Control dialog box help

Click on any of the following topics for information on color options.

Help Topics

[Calibrate Screen](#)
[Cluster](#)
[Defaults](#)
[Halftoning](#)
[Lightness](#)
[Match Screen](#)
[No Adjustment](#)
[PANTONE®* Colors](#)
[Pattern](#)
[Printed Color Control](#)
[Scatter](#)
[Vivid Color](#)

PANTONE Color simulations are only available with this driver when driven by qualified Pantone-licensed software packages. Contact Pantone, Inc. for a current list of qualified licensees.

* Pantone, Inc.'s check-standard trademark for color. Pantone, Inc., 1988

ATM users should note that the color of text sent to the printer as graphics will be enhanced using the settings in the **Graphics** column. The recommended setting in the ATM Control Panel is "Use pre-built or resident fonts" this will avoid differences in text color and improve performance.

Text which is rotated is sometimes sent to the printer as graphics and will be enhanced according to the **Graphics** setting.

For More Information

For information on printer setup, click **Help...** in the **Setup** dialog box.

For late-breaking information on using your printer in a Windows environment, check the [README.TXT](#) file.

For information on your printer, refer to the printer's user documentation.

To print this or any other help topic, choose **Print Topic** from the **File** menu in the Help window.

Help Screen Text Copyright 1995 by Hewlett-Packard Company. Fifth Edition, June 1995.

Color Control dialog box help

Click on any of the following topics for information on color options.

Help Topics

[Calibrate Screen](#)
[Cluster](#)
[Defaults](#)
[Halftoning](#)
[Lightness](#)
[Match Screen](#)
[No Adjustment](#)
[Pattern](#)
[Printed Color Control](#)
[Scatter](#)
[Vivid Color](#)

ATM users should note that the color of text sent to the printer as graphics will be enhanced using the settings in the **Graphics** column. The recommended setting in the ATM Control Panel is "Use pre-built or resident fonts" this will avoid differences in text color and improve performance.

Text which is rotated is sometimes sent to the printer as graphics and will be enhanced according to the **Graphics** setting.

For More Information

For information on printer setup, click **Help...** in the **Setup** dialog box.

For late-breaking information on using your printer in a Windows environment, check the [README.TXT](#) file.

For information on your printer, refer to the printer's user documentation.

To print this or any other help topic, choose **Print Topic** from the **File** menu in the Help window.

Help Screen Text Copyright 1995 by Hewlett-Packard Company. Fifth Edition, June 1995.

Color Control dialog box help

Click on any of the following topics for information on color options.

Help Topics

[Convert colors to pure Black](#)

[Defaults](#)

[Halftoning](#)

[Lightness](#)

[Pattern](#)

[Scatter](#)

Color Control dialog box help

Click on any of the following topics for information on color options.

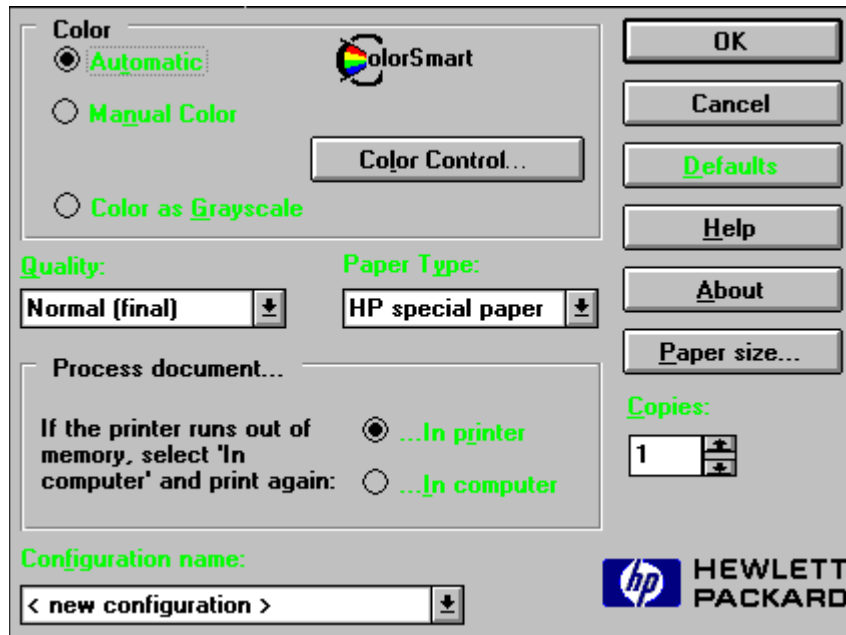
Help Topics

[Defaults](#)
[Halftoning](#)
[Lightness](#)
[Pattern](#)

Help Screen Text Copyright 1995 by Hewlett-Packard Company. Fifth Edition, June 1995.

Options dialog box help

Click on any of the following topics for information on setting up the **HP Printer Driver (HP-GL/2 and HP RTL) for Microsoft Windows 3.1**. Use the scroll bar to see text not currently visible in the Help window.



Help Topics:

[Automatic](#)
[Color as Grayscale](#)
[Configuration name](#)
[Copies](#)
[Defaults](#)
[In printer/In computer](#)
[Manual Color](#)
[Paper Type](#)
[Print Quality](#)

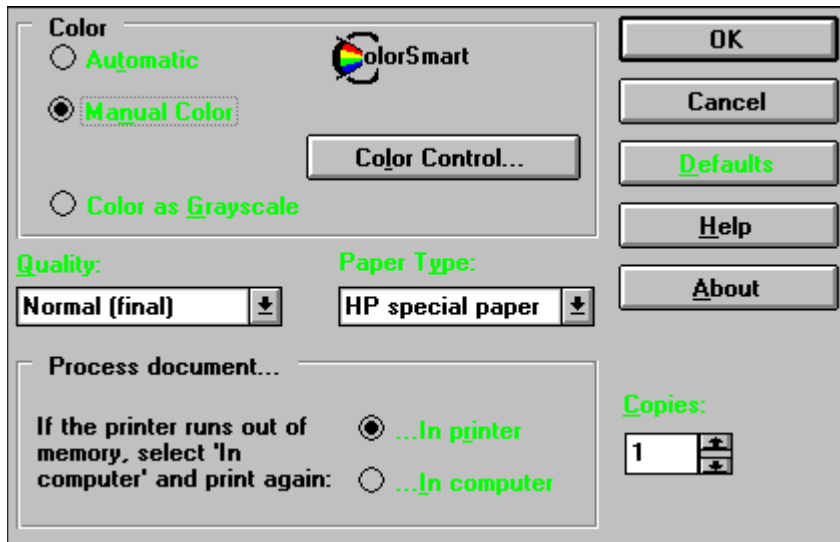
Click on any one of the above to see an explanation of the effect that the setting will have on your printed drawing.

Associated topics:

[Color Control - Manual color selected](#)
[Color Control - Color as Grayscale selected](#)
[Paper size](#)

Options dialog box help

Click on any of the following topics for information on setting up the **HP Printer Driver (HP-GL/2 and HP RTL) for Microsoft Windows 3.1**. Use the scroll bar to see text not currently visible in the Help window.



Help Topics:

[Automatic](#)
[Color as Grayscale](#)
[Copies](#)
[Defaults](#)
[In printer/In computer](#)
[Manual Color](#)
[Paper Type](#)
[Print Quality](#)

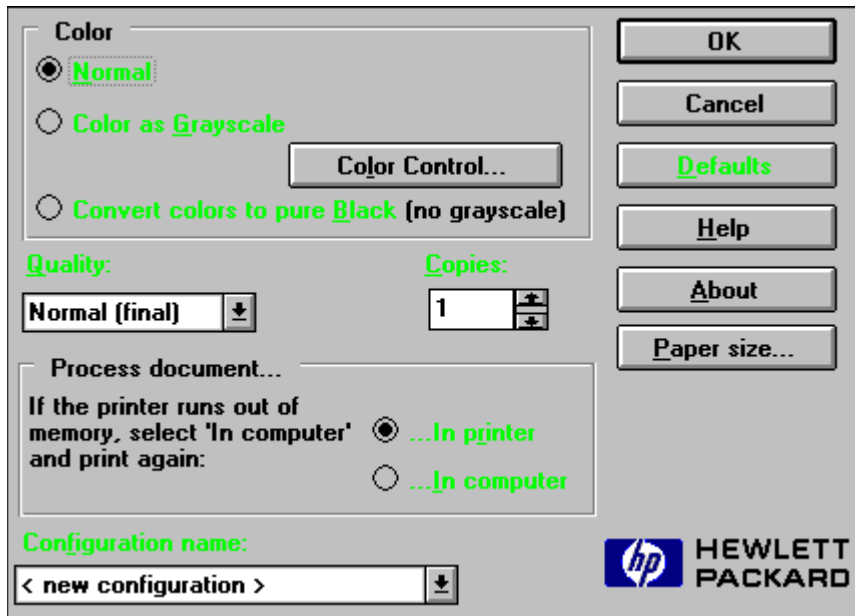
Click on any one of the above to see an explanation of the effect that the setting will have on your printed drawing.

Associated topics:

[Color Control - Manual Color selected](#)
[Color Control - Color as Grayscale selected](#)
[Paper size](#)

Options dialog box help

Click on any of the following topics for information on setting up the **HP Printer Driver (HP-GL/2 and HP RTL) for Microsoft Windows 3.1**. Use the scroll bar to see text not currently visible in the Help window.



Help Topics:

[Convert colors to pure Black](#)
[Color as Grayscale](#)
[Configuration name](#)
[Copies](#)
[Defaults](#)
[In printer/In computer](#)
[Normal](#)
[Print Quality](#)

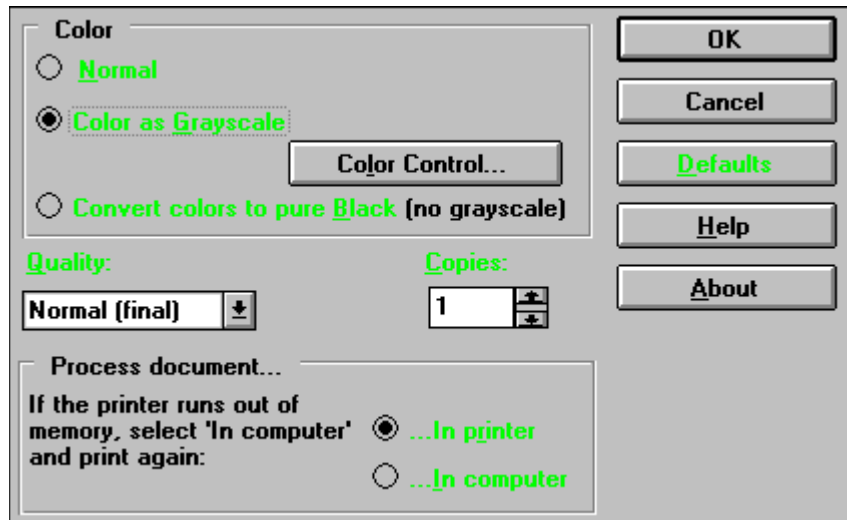
Click on any one of the above to see an explanation of the effect that the setting will have on your printed drawing.

Associated topics:

[Color Control](#)
[Lightness](#)
[Paper size](#)
[Pattern](#)

Options dialog box help

Click on any of the following topics for information on setting up the **HP Printer Driver (HP-GL/2 and HP RTL) for Microsoft Windows 3.1**. Use the scroll bar to see text not currently visible in the Help window.



Help Topics:

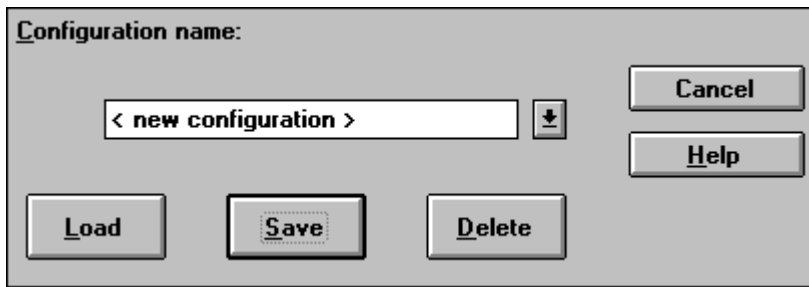
[Convert colors to Black](#)
[Color as Grayscale](#)
[Color Control](#)
[Copies](#)
[Defaults](#)
[In printer/In computer](#)
[Normal](#)
[Print Quality](#)

Click on any one of the above to see an explanation of the effect that the setting will have on your printed drawing.

Associated topics:

[Lightness](#)
[Paper size](#)
[Pattern](#)

User configurations dialog box



The dialog box is titled "User configurations dialog box". It features a label "Configuration name:" followed by a text input field containing "< new configuration >". To the right of the input field is a small square button with a downward-pointing arrow. Below the input field are three buttons: "Load", "Save", and "Delete". To the right of these buttons are two more buttons: "Cancel" and "Help".

The User configurations dialog box allows you to save, re-load and delete pre-set driver configurations. All your currently chosen settings for Color, Paper Type, Print Quality, Copies etc. can be saved using a 'configuration' name, and loaded later for re-use whenever you want to repeat the same type of print job.

Paper Sizes Dialog box

Click on any of the following topics to find out more about the parameter settings in this dialog box.

[Custom paper size](#)

[Oversize](#)

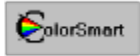
[Units](#)

[Used standards - Paper sizes](#)

Help Screen Text Copyright 1995 by Hewlett-Packard Company. Fifth Edition, June 1995.

**** Topics start here**

Automatic



IMPORTANT !!

HP DesignJet 250C, 650C (C2858B and C2859B only), 750C and 755CM

NOTE: Because of the diversity of printing requirements and color options, Hewlett-Packard has provided **Automatic**, an option which utilizes ColorSmart technology to pre-set all the printed color control options. **Automatic** is a one-button solution to high-quality color output.

Automatic provides an easy solution to consistent and intelligent color management in your printed output. It analyzes your output for you, identifies the component objects as text, graphics and images, and then automatically maximizes the vibrancy, clarity and color-matching capabilities of your printer. High-quality color output, all at the touch of a button.

Manual Color is an alternative to Automatic, select **Manual Color** and then **Color Control...** to open the **Color Control** dialog box. The features in the Color Control dialog box allow you to control the colors of your printed output according to your particular needs.

Calibrate Screen

Screen calibration provides the characteristics of your monitor, and the lighting around it, to the printer driver. The printer driver uses this information to better match the printer output to what you see on your screen. Screen calibration has an effect only when **Printed Color Control** in the **Color Control** dialog box is set to **Match Screen**.

Click the **Calibrate Screen...** button to open the dialog box which offers you the choice of three methods of screen calibration. All three types of calibration directly affect the **Match Screen** options under the **Printed Color Control** section.

Click the **Help** button in the **Hewlett-Packard Screen Calibration** dialog box to display the help topics on the different methods of screen calibration.

Canceling a print from your application

Take care when you cancel a print which has been sent to the printer. You may not always get the desired result, i.e. the printer may have already received part of your drawing at the time you chose to cancel, and the next time you send a print the printer will begin to draw the print you canceled. To help you cancel a print satisfactorily we have provided a recommended method, this is as follows:

- a) Find the window which shows you that your document is being sent to the printer, as illustrated below. (If you cannot see this window try an ALT-TAB sequence to display other active windows)



- b) Click the **Cancel** button.
- c) Wait for some time to allow your application to stop sending data.
- d) You should be returned to your application.

In the event that you are not returned to your application click the **Cancel** button in your application but you may experience problems. This type of problem can be overcome by pressing the "Cancel" button on the front panel of your printer, *however you should make sure that the printer is processing the plot you want to cancel.*

Color as Grayscale

Using this setting the colors in your drawing are converted to shades of gray. Use **Color as Grayscale** when you want the colors in a drawing to be printed using shades of gray.

Color as Grayscale is the default setting with a monochrome printer.

You may find the [Lightness](#) setting to be particularly useful when you use this setting.

Color intensity using the print "Color as Grayscale" setting

When using the driver's "Color as Grayscale" setting you may see that some colors are printed as black and not as a shade of gray. Some applications send a black color value for some objects when they detect a non-color device driver.

Convert colors to pure Black

Your drawing will be printed using only black and white. All the non-white colors in your drawing will be printed using black. This setting is not recommended if you drawing has color photographs or images in it.

Copies

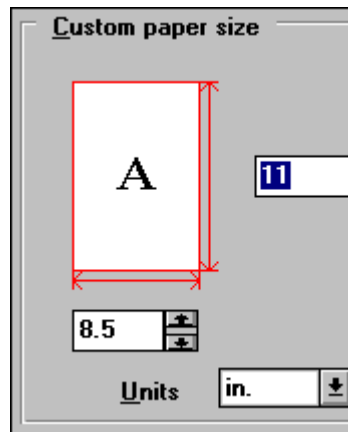
The **Copies** setting in the **Options** dialog box lets you make up to 99 copies of each drawing. To change the **Copies** setting, type in a new number between 1 and 99, inclusive.

Custom paper size

If the paper size you have chosen in your software application is not listed in the **Setup** dialog box, or if you're producing a long-axis print, you should use the **Custom paper size** box to enter its dimensions.

The dimensions you enter should be the same as those used by your application.*

The **Units** drop-down list allows you to choose between 'inch' and 'mm' to allow you to enter dimensions in the measuring system of your choice.



Use **Width** to specify the width (shorter dimension) of your custom-size paper *or* the width of the paper for your long-axis print.

NOTE: *Always enter the smaller dimension for **Width**.*

Use **Length** to specify the length (longer dimension) of your custom-size paper *or* the length of the paper for your long-axis print.

NOTE: *Always enter the larger dimension for **Length**.*

The **Custom** option in the **Paper Size** drop-down list will display the dimensions of the custom size you enter here.

*If the **Paper Size** option you select in the **Setup** dialog box does not match the size of the paper you have chosen in your software application, your printed drawing may be incorrectly placed on the paper.

Associated topics:

[Custom paper size limits](#)

[How to calculate a printable area](#)

[Long-axis prints](#)

[Printer margin settings using this driver](#)

To print this or any other help topic, choose **Print Topic** from the **File** menu in the Help window.

Custom paper size limits

When entering **Width** and **Length** values for a **Custom paper size**, refer to the following table for the range of acceptable values (inclusive), which are based on the printer type you selected in this driver.

<u>Driver-selected/Printer Type</u>	<u>Width Range</u>	<u>Length Range*</u>
HP DesignJet 200 Printer (C3180A)	8.3 to 24.6 in (211 to 625 mm)	8.3 to 64.0 in (211 to 1625 mm)
HP DesignJet 220 Printer (C3187A)		
HP DesignJet 230 Printer (C4694A)		
HP DesignJet 250C Printer (C3190A)		
HP DesignJet 200 Printer (C3181A)	8.3 to 36.1 in (211 to 917 mm)	8.3 to 64.0 in (211 to 1625 mm)
HP DesignJet 220 Printer (C3188A)		
HP DesignJet 230 Printer (C4695A)		
HP DesignJet 250C Printer (C3191A)		
HP DesignJet 600 Printer (C2847A)	8.3 to 24.6 in (211 to 625 mm)	8.3 to 109.2 in (211 to 2773 mm)
HP DesignJet 650C Printer (C2858A/B)		
HP DesignJet 750C Printer (C3195A)		
HP DesignJet Printer (C1633A/B)	8.3 to 36.1 in (211 to 917 mm)	8.3 to 109.2 in (211 to 2773 mm)
HP DesignJet 600 Printer (C2848A)		
HP DesignJet 650C Printer (C2859A/B)		
HP DesignJet 750C Printer (C3196A)		
HP DesignJet 755CM Printer (C3198A)		

* If your application has a maximum length value, your prints will be limited to that value even if you enter a larger "Length" value in the driver.

Associated topics:

[How to calculate a printable area](#)

To print this or any other help topic, choose **Print Topic** from the **File** menu in the Help window.

Custom Size

The **Custom** option in the **Paper Size** drop-down list box allows you to enter a paper size that is not listed among the other **Paper Size** options.

Associated topics:

[Custom paper size](#)

[Long-axis prints](#)

[Paper Sizes dialog box](#)

Customer Support

If you need help while configuring this driver and your questions are not answered by this online help system, you can either contact your local authorized HewlettPackard dealer, or customer support organisation for help. See below for details.

US Support Resources

<u>Resource</u>	<u>Support provided</u>	<u>Phone number</u>	<u>Hours of operation.</u>
HP Customer Support Center	Technical support with setup, operation and repair information.	(208) 323-2551	M/Tu/Th/F: 7 a.m. - 6 p.m. (MST) Wednesday: 7 a.m. - 4 p.m. (MST)

European Support Resources

<u>Resource</u>	<u>Support provided</u>	<u>Phone number*</u>	<u>Hours of operation.</u>
European Customer Support Center (ECSC)	Language spoken:	+31	M/Tu/Th/F:
	English	/20-682 8291	8:30 a.m. -
	Dutch	/20-681 6473	6 p.m. (CET)
	French	/20-681 8260	
	German	/20-681 7174	Wednesday:
	Norwegian	/20-682 0094	8:30 a.m. -
	Danish	/20-681 6171	4 p.m.
	Finnish	/20-681 1214	(CET)
	Swedish	/20-681 8025	
	Italian	/20-581 3318	
	Spanish	/20-581 3319	

* In some countries calls can be made at a domestic rate, contact your local authorized HewlettPackard dealer for these special numbers.

Asia-Pacific Support Resources

<u>Resource</u>	<u>Support provided</u>	<u>Phone/Fax number</u>	<u>Hours of operation.</u>
HP Fulfilment Service	Latest drivers.	Australia: Tel: (612) 565 6099 Fax: (612) 519 5631 Singapore: Tel: (65) 740 4477 Fax: (65) 740	Normal office hours in the applicable country.

For telephone support in the AsiaPacific region other than the service listed above, initially refer to your printers documentation then contact your local HP dealer.

To print this or any other help topic, choose **Print Topic** from the **File** menu in the Help window.

Defaults - Color Control dialog box

The **Defaults** button brings all settings back to the original factory defaults.

- 1) HP DesignJet 250C, 650C (B-series), 750C & 755CM with **Color as grayscale** selected:

Defaults:	
Convert colors to pure Black	Off
Halftoning	Scatter
Lightness	Mid setting

- 2) HP DesignJet 250C, 650C (B-series), 750C & 755CM with **Manual color** selected:

Defaults:	
Printed Color Control	
Text:	Vivid Color
Graphics:	Vivid Color
Photos:	Vivid Color
Halftoning	
Text:	Scatter
Graphics:	Scatter
Photos:	Scatter
Lightness	Mid setting
PANTONE®* Colors	Off

* Pantone, Inc.'s check-standard trademark for color.

- 3) HP DesignJet 230

Lightness	Mid setting
Halftoning	Scatter

- 4) HP DesignJet 200, 220, 600 & 650C (A-series)

Lightness	Mid setting
Halftoning	Pattern

Defaults - Options dialog box

- 1) HP DesignJet 750C & 755CM

Color	Automatic
Print Quality	Normal (final)
Paper Type	Coated Paper
Copies	1
Process document...	...In printer

- 2) HP DesignJet 250C & 650C (B-series)

Color	Automatic
Print Quality	Normal (final)
Paper Type	HP special paper
Copies	1
Process document...	...In printer

3) HP DesignJet 650 (A-series)

Color	Normal
Print Quality	Normal (final)
Copies	1
Process document...	...In printer

4) HP DesignJet 200, 220, 230, & 600

Color	Color as Grayscale
Print Quality	Normal (final)
Copies	1
Process document...	...In printer

Font support and recommendations

The method of font generation the printer uses depends on which font you've selected in your document or drawing.

The following table summarizes this driver's font support and recommendations.

WINDOWS 3.1 FONT SUPPORT

<u>Font Type Selected in Document/Drawing</u>	<u>All HP DesignJet printers:</u>
Any standard Windows vector font (Modern, Roman, Script)	Supported
Any standard Windows raster font (Courier, Helv, Symbol, System, Terminal, Tms Rmn)	Supported/ Not recommended
Adobe Type Manager (ATM) fonts	Supported
TrueType fonts	Supported/ Recommended
Intellifont Type fonts (TypeDirector, Intellifont-for-Windows)	Not supported
Any other type of font	Not supported

To print this or any other help topic, choose **Print Topic** from the **File** menu in the Help window.

General Information

The following topics are not specific to a particular application. If your specific application is not covered by this help system, this information may be useful to help you understand its behavior.

[Canceling a print from your application](#)

[Color intensity using the print "Color as Grayscale" setting](#)

[Long-axis printing](#)

[Printing areas with gradient shading](#)

[Printing lines](#)

[Some applications do not work with large paper sizes](#)

[Some applications have an overriding orientation setting](#)

[Users of paint and image-processing applications](#)

Using the "Process document in computer" option

Halftoning

Primary printer colors are **cyan**, **magenta**, **yellow**, **red**, **green**, **blue** and **black**. All other colors are produced by using these primary colors and white space. The eye mixes these to produce other colors and shades. The method used by your printer to produce non-primary colors is user selectable through the **Halftoning** setting, which is either: [Scatter, Pattern or Cluster](#).

The choice is usually a matter of personal preference. (See Associated topics below.)

Scatter produces a smooth appearance by randomly distributing the ink.
(Scatter is not available with some devices.)

Use the Scatter setting for:

- Complex graphic images.
- Photographic images.
- Scanned images.
- Images with gradient fills.
- Business graphics.

Pattern will give a uniform distribution of ink. Sometimes it will produce a noticeable geometric pattern. Pattern was the only halftoning option in older versions of this driver. You could select **Pattern** in order to retain consistency with drawings produced using one of these older versions of the driver.

Use the Pattern setting for:

- Colored text.
- Line graphics.
- Free-hand images.
- Clip art images.
- Desktop publishing images.

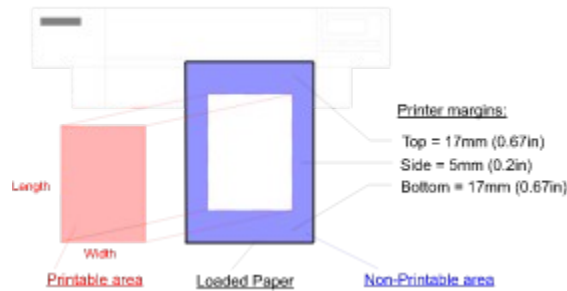
Cluster halftoning places dots of ink in clusters to produce complex graphics and documents which are to be photocopied.
(Cluster is not available with some devices.)

NOTE: Thin lines and small type sizes (less than 18 points) in non-primary colors may not print well. If your output is unsatisfactory, choose primary colors for these objects and be sure to set **Printed Color Control of Graphics** to '**No Adjustment**' otherwise your chosen primary color may again be printed as a non-primary color.

Associated topics:

[Examples of halftoning](#)

How to calculate a printable area



The dimensions of the **printable area** of a particular sheet of paper can only be calculated when you know how it will be loaded into the printer, in either **portrait** or **landscape** orientation. You can then apply the printer margin dimensions to calculate the printable area's length and width.

Note: that the paper's orientation does not necessarily correspond to the orientation of the drawing in your application, there are occasions when your drawing will be rotated by 90 degrees before it is printed, hence the width of the drawing in your application is printed along the length of your loaded paper. See special case topic listed below.

The dimensions of the **printable area** can be calculated as follows:

Printable area **length**:

- = Loaded Paper length - (Top + Bottom margins)
- = Loaded Paper length - (17mm + 17mm)
- = Loaded Paper length - (.67in + .67in)

Printable area **width** :

- = Loaded Paper width - the two side margins
- = Loaded Paper width - (5mm + 5mm)
- = Loaded Paper width - (.20in + .20in)

Associated topics:

[Printable areas for some standard paper sizes](#)
[Special case](#)

HP DesignJet printer notes

When using one of these printers, please keep the following notes in mind:

- * **Always select pen parameter source = "Software."**

Be sure to set the front panel's source of pen parameters to "Software" to ensure that this driver will work correctly.

To check the printer's front panel setting, select "Source" from the Pen Parameters menu. If the front panel says, "Source=Software," you don't need to change anything. If it says anything else, press Enter, use Down Arrow to scroll to "Software," then press Enter.

- * **Colored objects are printed with gray values.**

Because the "source of pen parameters" is always set to "Software" when using this driver, the printer's front panel pen settings are ignored. The driver will convert a colored object to black or to one of the printer's shades of gray.

- * **Rasterized drawings can't be rotated from the printer's front panel.**

Due to rotate buffer memory limitations, rasterized drawings (e.g., drawings with heavy area fill and shading that you've scanned into your application) can't be rotated using the front panel Rotate feature. If you want to rotate a print that contains rasterized data, we recommend rotating it from within your application.

Note: Your drawing contains rasterized data if, it contains a bitmap, if you have used raster fill patterns, or if it contains text.

HP DesignJet 200, 220, 230 and 250C printer notes

When using one of these printers, please keep the following notes in mind:

- * **ATM text is not printed as expected (HP DesignJet 250C only).**

The color of ATM text sent as graphics is enhanced according to the **Graphics** setting in the driver and not as **Text**. This driver no longer requires the ATM Control Panel to be set as "Print ATM fonts as graphics", instead you are recommended to select "Use pre-built or resident fonts". This setting will avoid any differences in text color and will provide performance benefits.

- * **Always select pen setting source = "from software."**

Be sure to set the printer's source of pen parameters to "from software" to ensure that this driver will work correctly.

To check the printer's setting, load a sheet of printing paper and print a setup sheet. The current pen settings source is indicated on this sheet. If "from software" is already the current setting you don't need to change anything. If "from these tables" is the current setting, you need to fill in the "from software" oval and load the setup sheet back into the printer as indicated on the sheet itself.

- * **Colored objects are printed with gray values when "Color as grayscale" is selected (HP DesignJet 200 and 220 default setting)**

Because the "source of pen parameters" is always set to "Software" when using this driver, the printer's front panel pen settings are ignored. The driver will convert a colored object to black or to one of the printer's shades of gray.

- * **Rasterized drawings can't be rotated using the set up sheet.**

Due to rotate buffer memory limitations, rasterized drawings (e.g., drawings with heavy area fill and shading that you've scanned into your application) can't be rotated using the setup sheet "Rotate" feature. If you want to rotate a print that contains rasterized data, do not use the printer's rotate feature and rotate it from within your application.

Note: Your drawing contains rasterized data if: it contains a bitmap, you have used raster fill patterns, or it contains text.

HP DesignJet 600, 650C, 750C & 755CM printer notes

When using one of these printers, please keep the following notes in mind:

- * **ATM text is not printed as expected (HP DesignJet 650C (C2858B and C2859B), 750C and 755CM).**

The color of ATM text sent as graphics is enhanced according to the **Graphics** setting in the driver and not as **Text**. This driver no longer requires the ATM Control Panel to be set as "Print ATM fonts as graphics", instead you are recommended to select "Use pre-built or resident fonts". This setting will avoid any differences in text color and will provide performance benefits.

- * **Always select pen parameter source = "Software."**

Be sure to set the front panel's source of pen parameters to "Software" to ensure that this driver will work correctly.

To check the printer's front panel setting, select "Palette" from the Pen Settings menu. If the front panel says, "Palette=Software," you don't need to change anything. If it says anything else, press Enter, use Down Arrow to scroll to "Software," then press Enter.

- * **Colored objects are printed with gray values (DesignJet 600 only).**

Because the "source of pen parameters" is always set to "Software" when using this driver, the printer's front panel pen settings are ignored. The driver will convert a colored object to black or to one of the printer's shades of gray.

- * **Rasterized drawings can't be rotated from the printer's front panel.**

Due to rotate buffer memory limitations, rasterized drawings (e.g., drawings with heavy area fill and shading that you've scanned into your application) can't be rotated using the front panel Rotate feature. If you want to rotate a print that contains rasterized data, we recommend rotating it from within your application.

Note: Your drawing contains rasterized data: if it contains a bitmap, if you have used raster fill patterns, or if it contains text.

- * **The autorotate feature is disabled.**

The HP DesignJet 600, 650C, 750C and 755CM printers have an automatic rotation feature that rotates prints on roll paper when rotating will conserve paper. The autorotate feature is disabled when you use this printer driver.

- * **Expanded margins are not available.**

The HP DesignJet 600, 650C, 750C and 755CM printers have an Expanded margin feature that increases the printable area. When you use this driver, the Expanded margin feature is not available.

Lightness

The Lightness setting allows you to control the lightness or darkness of your printed output. You might find this control useful if you're working with a scanned image in your application.

To change the Lightness setting slide the button along the scale in the direction required.

Clicking on the **Defaults** button resets all the settings in the **Color Control** dialog box to their default setting; the Lightness setting is reset to the middle box.

To print this or any other topic, choose **Print Topic** from the **File** menu in the Help window.

Lightness

The **Lightness** (gamma) adjustment lightens or darkens the printed output. Use this to control the overall intensity of your image - lightest (on the left) darkest (on the right).

To change the Lightness setting slide the button along the scale in the direction required. For no **Lightness** adjustment select the darkest setting.

The **Lightness** (lightness/darkness) adjustment interacts with all three **Printed Color Control** options.

NOTE: When **Printed Color Control** is set to 'No adjustment', **Lightness** has no effect on the pure primary printer colors (red, green, blue, cyan, magenta, yellow, black), but will still affect non-primary colors. To remove the effect of the Lightness control completely, set it to its darkest setting.

To print this or any other help topic, choose **Print Topic** from the **File** menu in the Help window.

Loading sheet paper into your printer

You should load sheet paper into your printer in whatever orientation you have selected in the driver and your application, if your application has such a setting. Where it is possible to enter an orientation setting in your application make sure that it agrees with the driver orientation setting. However if your paper size is so large that it is only possible to load it in portrait orientation you must pay special attention to the margin settings. See the 'Special Case' section in the 'Printer margins' settings' topic for advice on the necessary steps.

Associated topic:

[Orientation](#)
[Printer margins](#)
[Special Case](#)

Long-axis prints

The long-axis feature allows you to produce prints up to 109.2 inches (2773 mm) long with this driver. Long-axis printing is possible if both the printer and the application support this feature.

All the [Supported Printers](#) support long-axis printing.

Note: The HP DesignJet 200, 220, 230 and 250C support long-axis printing, but long-axis prints are limited to 64.0 inches (1625 mm).

Below is a list of some commonly-used Windows applications that support long-axis printing. If your application isn't in this list, refer to your application's user guide to find out if long-axis printing is supported.

Some applications that support long-axis printing:

Arts & Letters
CADvance
Micrografx Picture Publisher
Microsoft Project*

- * Version 3.0 of Microsoft Project supports long-axis printing, however print length is limited to 62 inches (1575 mm).

To produce a long-axis print, you must enter the long-axis print Length in the **Paper sizes** dialog box.

Note: Your application may require other setting changes as well; refer to your application user's guide for more information.

To access the **Paper sizes** dialog box in Windows 3.1 -

from the **Program Manager** window:

open the **Main** window and double click **Control Panel**, double click **Printers**, and with your output device selected, click the **Setup...** button, then select **More sizes...**. This will open the **Paper Sizes** dialog box, you can enter your long-axis print dimensions in the **Custom paper size** section of this dialog box.

from your application:

select the **Print setup**, or similarly named option, probably in the **File** menu. Check that your output device is selected, click the **Options...** button and then **Paper size...** in the **Options** dialog box. This will open the **Paper Sizes** dialog box, you can enter your long-axis print dimensions in the **Custom paper size** section of this dialog box.

To access the **Paper sizes** dialog box in Windows 95 -

from the desktop:

click on **Start**, and select **Settings** and then click on **Printers**. In the **Printers** dialog box click on your HP DesignJet printer icon with the **right mouse button**, and select **Properties** from the pop-up menu. Click on the **Details** tab and click on the **Setup** button. Click on the **More sizes** button.

from your application:

select the **Print setup**, or similarly named option, probably in the **File** menu. Check that your output device is selected, click the **Properties...** button and then **More sizes...**. This will open the **Paper Sizes** dialog box, you can enter your long-axis print dimensions in the **Custom paper size** section of this dialog box.

To print this or any other help topic, choose **Print Topic** from the **File** menu in the Help window.

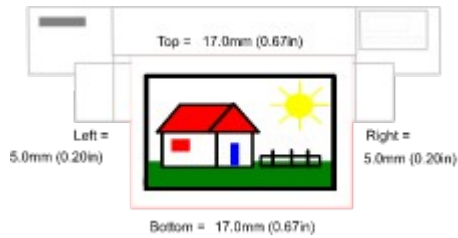
Manual Color

Manual Color is an alternative to Automatic, by using the settings in the **Color Control** dialog box you can control the colors of your printed output according to your particular needs.

Select **Manual Color** and then **Color Control...** to open the Color Control dialog box.

Margins - Landscape image/Landscape paper

For landscape paper and a landscape drawing, the margins are:



The above values are as you should enter them in your application.

They are the absolute minimum, you should not enter values less than these even if your application allows you to.

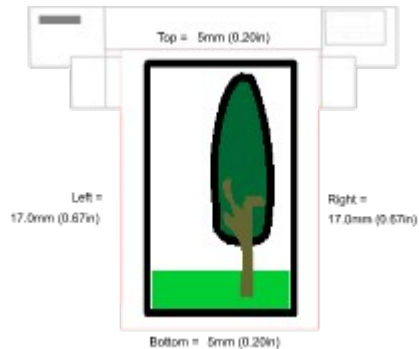
Associated topics:

[How to calculate a printable area](#)

[Printable areas](#)

Margins - Portrait image/Portrait paper

For portrait paper and a portrait drawing, the margins are:



The above values are as you should enter them in your application. They are the absolute minimum, you should not enter values less than these even if your application allows you to.

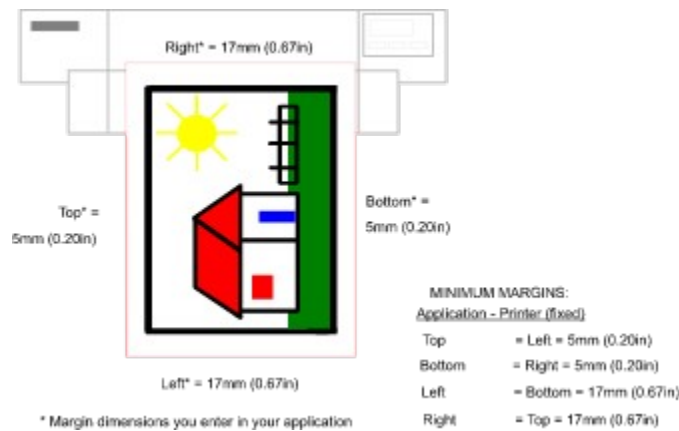
Associated topics:

[How to calculate a printable area](#)

[Printable areas for some standard paper sizes](#)

Margins - Landscape image/Portrait paper

Special case: for portrait paper and a landscape drawing, the margins are:



For users who want to produce a landscape drawing with the largest paper size the printer supports.

This special case requires that you transpose the margins, as shown above: the margin dimension which you enter in your application as the "Top margin" should correspond to the printer's left margin and, the "Bottom margin" dimension entered in your application should correspond to the printer's right margin etc, etc see table above.

For example, if you have an E-size DesignJet 600 printer and you want to produce an E-size print in landscape orientation, you would enter the following margin settings in your application:

Top = 5.0 mm (.20 in) Bottom = 5.0 mm (.20 in)
Left = 17.0 mm (.67 in) Right = 17 mm (.67 in)

They are the absolute minimum, you should not enter values less than these even if your application allows you to do so.

Associated topics:

[How to calculate a printable area](#)
[Printable areas](#)

Match Screen

Match Screen provides the closest printer-to-screen color matching. If selected, you should have performed screen calibration by clicking the **Calibrate Screen...** button.

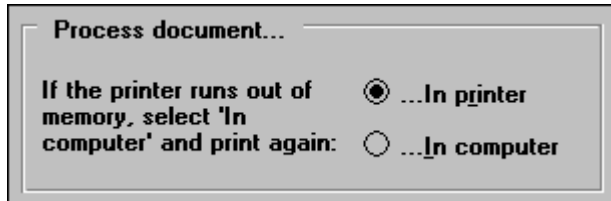
Associated topics:

[Calibrate Screen](#)

In printer/computer...

You are recommended to always print using the 'In printer' setting whenever it is possible.

Only if you see an 'Out of memory' message on the printer for a particular print should you return to this dialog box and enable the 'In computer' option. By doing so you can ensure that your drawing will always be printed by the printer, however the time taken may be considerably longer than that if it were possible to print using the 'In printer' option.



DON'T FORGET if you use the 'In computer' option to re-select 'In printer' when you print a different drawing, your printer may have enough memory to print it and you will make a saving in time by disabling 'In computer'.

More sizes

This button opens the [Paper Sizes dialog box](#).

No Adjustment

Select **No Adjustment** if you want the colors selected in your software application passed through to the printer without adjustment*.

*For no **Lightness** (gamma) adjustment select the darkest setting.

Normal

Available only on the HP DesignJet 650C (A-series) printers.

Use this setting to get printed output using the colors in your drawing.

Notes to ATM font users

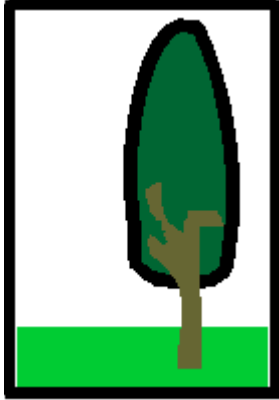
HP DesignJet 250C, 650C (C2858B and C2859B only), 750C, 755CM.

- 1) ATM fonts can be sent to the printer as graphics. Which means that the settings you have selected for **Graphics** in the **Color Control** dialog box i.e. **Printed Color Control** and **Halftoning**, will be used to control its appearance and not those selected for **Text**. As a result you may see a difference in your printed output between text and text using ATM fonts.
- 2) You are recommended to select "Use pre-built or resident fonts" from the ATM Control Panel, this setting will avoid differences in text color and improve performance.
- 3) If your document uses vector fonts (i.e. Modern, Roman, Script) and you have Adobe Type Manager switched on, you may see that some of the fonts in your document will be substituted using ATM fonts.
- 4) If your document uses a font that is not installed on your system it will be substituted using a similar one, as follows:
 - if ATM is on, using an ATM font.
 - if ATM is off, using a TrueType font.

Orientation

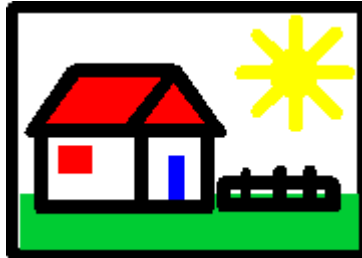
The **Orientation** setting indicates which way the paper you selected in **Paper Size** will be oriented:

Portrait



Portrait means the paper is taller than it is wide when you view the printed drawing upright.

Landscape



Landscape means the paper is wider than it is tall when you view the printed drawing upright.

To change the **Orientation** setting, click the option button representing the orientation you want. The icon to the left of the option buttons illustrates the selected **Orientation**.

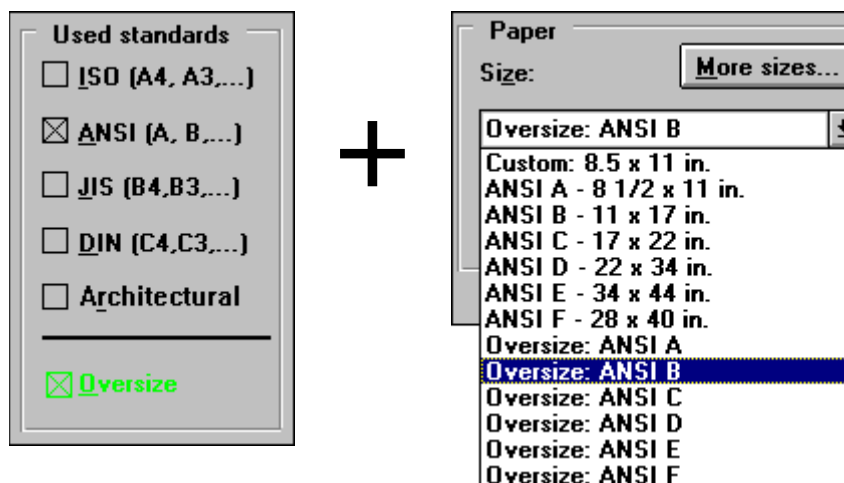
Associated topics:

[General Information](#)

[Printer margin settings using this driver](#)

To print this or any other help topic, choose **Print Topic** from the **File** menu in the Help window.

Oversize



Select **Oversize**, **AND** select an oversize option here.

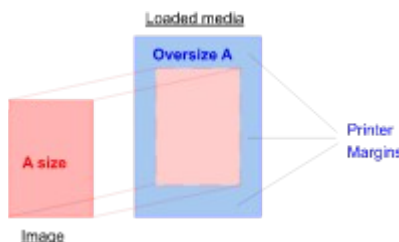
Using the 'oversize' feature you can print images which have the same dimensions as a standard size, hence the printer requires an 'oversized' piece of paper to print the required results. The examples below illustrate the results when printing an image which is 11 x 17 ins (the same dimensions as ANSI B.)

Image size in application	Loaded paper size and 'Paper Size' setting in Print Setup dialog box.	Result
11 x 17 ins	ANSI B (11 x 17 ins)	<i>Clipped image surrounded by printer margins - printer unable to print all of image due to the printers need to leave margins blank.</i>
11 x 17 ins	Oversize: ANSI B (11 x 17 ins + either <u>Landscape or Portrait margins.</u>)	<i>All of image printed, surrounded by printer margins.</i>
11 x 17 ins	Roll or sheet equal to or larger than Oversize: ANSI B.(11 x 17 ins + either <u>Landscape or Portrait margins.</u>)	<i>All of image printed, surrounded by printer margins - depending on size of paper loaded in printer, there will be unused blank paper.</i>

Ensure that your loaded paper has dimensions which are at least equal to the standard size + printer margins.

For example:

to print an ANSI A sized image your loaded paper needs to be *at least* ANSI A sized *plus* the margins required by the printer. See opposite:



A size + printer margins = Oversize: ANSI A

Pantone

Available only with the HP DesignJet 650C (B-series), 750C and 755CM.

If you want to have simulated Pantone colors in your printer output you must select **Pantone Colors**. By selecting **Pantone Colors** you ensure that colors, which are designated as Pantone colors by your application, are not passed through the Printed Color Control and Halftoning color enhancement processes. They will instead be sent directly to your printer using color co-ordinates which will simulate the selected Pantone color.

For further information regarding the use of PANTONE simulated colors refer to the application note which was packaged with your printer*.

* HP DesignJet 650C (B-series) - *"Using PANTONE Simulated Colors with your HP Plotter"*
or
HP DesignJet 750C and 755CM - *"HP Color Management Kit - User's Guide"*.

* Pantone, Inc.'s check-standard trademark for color © Pantone, Inc., 1988

Paper Size list

The sizes listed in this drop-down list are controlled in three ways:

- the currently selected **Paper Source**,
- options selected in the **Paper sizes** dialog box and,
- by the type of printer you are using
(i.e. 'E' size paper will not be listed if you have a 'D' size printer.)

If the size you want is not listed, use the **More sizes...** button to open the **Paper Sizes** dialog box and 'check' the appropriate paper standards option.

Associated topics:

[Custom paper size](#)

[Long-axis prints](#)

[More sizes...](#)

[Paper sizes dialog box](#)

Paper Source

The **Paper Source** setting refers to the source of the paper you've loaded in your printer. It is either a single sheet or a roll.

The list of roll size options is based on your selected printer type.

If you've loaded a single sheet, select **Sheet Feed**.

If you've loaded a roll, be sure to select the roll size you've loaded. If your roll size isn't listed, choose **Sheet Feed**.

Paper Type List

Depending on the printer you are configuring, the **Paper Type** drop-down list lets you select from the following paper types:

**HP DesignJet 750C & 755CM
Paper Type options:**

Coated Paper^(2, 6)
Opaque Bond
High-Gloss Film⁽²⁾
Semi-Gloss Photo
High-Gloss Photo⁽⁷⁾

**HP DesignJet 250 & 650 (B-series)
Paper Type options:**

HP Special Paper
Other⁽⁵⁾

The appearance of the colors which are printed are dependent on the type of paper they are printed on and the color options⁽¹⁾ you have selected. If you are using **PANTONE®* Colors**⁽³⁾ in your image or you want your printed colors to closely match those you see on-screen⁽⁴⁾, we recommend that you load one of the Pantone certified medias and set the driver **Paper Type** setting to match.

Note:

- 1) The default color option **Vivid color** will enhance the appearance of printed colors.
- 2) This media is Pantone certified.
- 3) PANTONE Colors generated by the HP DesignJet 650C, 750C and 755CM are four-color process simulations and may not match PANTONE-identified solid color standards.
- 4) Use the **Match Screen** setting in the **Color Control** dialog box.
- 5) If you are not using HP Special Inkjet Paper we recommend that you select **Other** as your paper type. Using this setting: a) the **PANTONE Colors** and **Printed Color Control** settings, in the **Color Control** dialog box assume generic paper characteristics, and b) the recommended drying times will not be valid.
- 6) If you are using "HP Heavyweight Coated Paper", select this Paper Type list option.
- 7) If you are using "HP Premium-Gloss Photo Paper", select this Paper Type list option.

* Pantone, Inc.'s check-standard trademark for color.

You should always select the type of paper that you have loaded in the printer in order to get the best printed quality and the best color characteristics. If the paper type setting does not correspond to the type of paper you have loaded the quality of the printed image may be degraded and the color fidelity may be impaired.

Printable areas

Click on any of the listed paper standards to see a list of printable areas for the most common paper sizes.

Paper standards:

[ANSI](#)

[Architectural](#)

[DIN](#)

[ISO](#)

[JIS](#)

Associated topics:

[Custom paper size limits](#)

[How to calculate a printable area](#)

[Printer margin settings using this driver](#)

To print this or any other help topic, choose **Print Topic** from the **File** menu in the Help window.

Printable Areas - Architectural

Printable area (width x height) by orientation of drawing					
HP DesignJet series printers only	Size (orientation) of loaded paper	Inches:		millimeters:	
		landscape	portrait	landscape	portrait
Architectural	A (portrait)	-	8.61 x 10.66	-	219 x 271
	A (landscape)	11.61 x 7.66	-	295 x 195	-
	B (portrait)	-	11.61 x 16.66	-	295 x 423
	B (landscape)	17.61 x 10.66	-	447 x 271	-
	C (portrait)	-	17.61 x 22.66	-	447 x 576
	C (landscape)	23.61 x 16.66	-	600 x 423	-
	D (portrait)	34.66 x 23.61 ⁽¹⁾	23.61 x 34.66	880 x 600 ⁽¹⁾	600 x 880
	D (landscape) ⁽²⁾	35.61 x 22.66	-	904 x 576	-
	E1 (portrait)	40.66 x 29.61 ⁽³⁾	29.61 x 40.66	1033 x 752 ⁽³⁾	752 x 1033
	E (portrait)	46.66 x 35.61 ⁽³⁾	35.61 x 46.66	1185 x 904 ⁽³⁾	904 x 1185

(1) For D/A1-size devices only, requires the use of the [Special case](#) circumstances.

(2) For E/A0-size devices only.

(3) For E/A0-size devices only, requires the use of the [Special case](#) circumstances.

Printable Areas - ANSI

		Printable area (width x height) by orientation of drawing			
HP DesignJet series printers only	Size (orientation) of loaded paper	Inches:		millimeters:	
		landscape	portrait	landscape	portrait
ANSI	A (portrait)	-	8.11 x 9.66	-	206 x 245
	A (landscape)	10.61 x 7.16	-	269 x 182	-
	B (portrait)	-	10.61 x 15.66	-	269 x 398
	B (landscape)	16.61 x 9.66	-	422 x 245	-
	C (portrait)	-	16.61 x 20.66	-	422 x 525
	C (landscape)	20.61 x 15.66	-	549 x 398	-
	D (portrait)	32.66 x 21.61 ⁽¹⁾	21.61 x 32.66	830 x 549 ⁽¹⁾	549x 830
	D (landscape) ⁽²⁾	33.61 x 20.66	-	854 x 525	-
	E (portrait)	42.66 x 33.61 ⁽³⁾	33.61 x 42.66	1084 x 854 ⁽³⁾	854 x 1084

* not DesignJet 2xx series

(1) For D/A1-size devices only, requires the use of the [Special case](#) circumstances.

(2) For E/A0-size devices only.

(3) For E/A0-size devices only, requires the use of the [Special case](#) circumstances.

Printable Areas - DIN

		Printable area (width x height) by orientation of drawing			
HP DesignJet series printers only	Size/orientation of loaded paper)	Inches:		millimeters:	
		landscape	portrait	landscape	portrait
DIN	C4 (portrait)	-	8.62 x 11.41	-	219 x 290
	C4 (landscape)	12.36 x 7.68	7.68 x 12.36	314 x 195	-
	C3 (portrait)	-	12.36 x 16.70	-	314 x 424
	C3 (landscape)	17.64 x 11.42	-	448 x 290	-
	C2 (portrait)	24.7 x 17.64 ⁽¹⁾	17.64 x 24.17	614 x 448 ⁽¹⁾	448 x 614
	C2 (landscape) ⁽²⁾	25.12 x 16.70	-	638 x 424	-
	C1 (portrait) ⁽²⁾	-	25.12 x 34.76	-	638 x 883
	C1 (landscape)	35.71 x 24.17	-	907 x 614	-
	C0 (portrait)	49.72 x 35.71 ⁽³⁾	35.71 x 49.72	1263 x 907 ⁽³⁾	907 x 1263

(1) For D/A1-size devices only, requires the use of the [Special case](#) circumstances.

(2) For E/A0-size devices only.

(3) For E/A0-size devices only, requires the use of the [Special case](#) circumstances.

Printable Areas - JIS

HP DesignJet series printers only		Printable area (width x height) by orientation of drawing			
		Inches:		millimeters:	
		landscape	portrait	landscape	portrait
JIS	B4 (portrait)	-	9.72 x 12.99	-	247 x 330
	B4 (landscape)	13.94 x 8.78	-	354 x 223	-
	B3 (portrait)	-	13.94 x 18.94	-	354 x 418
	B3 (landscape)	19.88 x 12.99	-	505 x 330	-
	B2 (portrait)	27.32 x 19.88 ⁽¹⁾	19.88 x 27.32	694 x 505 ⁽¹⁾	505 x 694
	B2 (landscape) ⁽²⁾	28.27 x 18.94	-	718 x 481	-
	B1 (portrait)	39.21 x 28.27 ⁽³⁾	28.27 x 39.21	996 x 718 ⁽³⁾	718 x 996

(1) For D/A1-size devices only, requires the use of the [Special case](#) circumstances.

(2) For E/A0-size devices only.

(3) For E/A0-size devices only, requires the use of the [Special case](#) circumstances.

Printable Areas - ISO

		Printable area (width x height) by orientation of drawing			
HP DesignJet series printers only	Size (orientation) of loaded paper	Inches:		millimeters:	
		landscape	portrait	landscape	portrait
ISO	A4 (portrait)	-	7.87 x 10.35	-	200 x 263
	A4 (landscape)	11.30 x 6.93	-	287 x 176	-
	A3 (portrait)	-	11.30 x 15.20	-	287 x 386
	A3 (landscape)	16.14 x 10.35	-	410 x 263	-
	A2 (portrait)	-	16.14 x 22.05	-	410 x 560
	A2 (landscape)	23.00 x 15.20	-	584 x 386	-
	A1 (portrait)	31.77 x 23.00 ⁽¹⁾	23.00 x 31.77	807 x 584 ⁽¹⁾	584 x 807
	A1 (landscape) ⁽²⁾	32.72 x 22.05	-	831 x 560	-
	A0 (portrait)	45.47 x 32.72 ⁽³⁾	32.72 x 45.47	1155 x 831 ⁽³⁾	831 x 1155
	B4 (portrait)	-	9.45 x 12.56	-	240 x 319
	B4 (landscape)	13.50 x 8.50	-	343 x 216	-
	B3 (portrait)	-	13.50 x 18.35	-	343 x 466
	B3 (landscape)	19.29 x 12.56	12.56 x 19.29	490 x 319	319 x 490
	B2 (portrait)	26.50 x 19.29 ⁽¹⁾	19.29 x 26.50	673 x 490 ⁽¹⁾	490 x 673
	B2 (landscape) ⁽²⁾	27.45 x 18.35	18.35 x 27.45	697 x 466	466 x 697
	B1 (portrait)	38.03 x 27.45 ⁽³⁾	27.45 x 38.03	966 x 697 ⁽³⁾	697 x 966

(1) For D/A1-size devices only, requires the use of the [Special case](#) circumstances.

(2) For E/A0-size devices only.

(3) For E/A0-size devices only, requires the use of the [Special case](#) circumstances.

Notes on the HP DesignJet printer series

After reading the topics about font support and margin settings (which apply to [all printer types supported by this driver](#)), please read one of the subsequent sections about your specific printer type.



All printers:

[Font support and recommendations](#)
[Printer margin settings using this driver](#)
[Supported Printers](#)

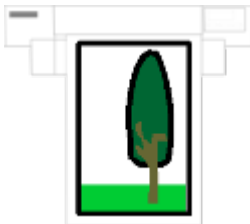
Specific printers:

[HP DesignJet printer notes](#)
[HP DesignJet 200, 220, 230 and 250C printer notes](#)
[HP DesignJet 600, 650C, 750C and 755CM printer notes](#)

Printer margin settings using this driver

Select the diagram which matches your circumstances and click on "Margins" to see an explanation of the margin settings *when using this driver*. (Some of the margin settings are different when you're not using this driver.) For best printing results, make sure the margin settings in your application match the driver's margin settings for the selected printer type. Also, be sure to read the "Special Case" topic.

Portrait image/Paper loaded
in portrait:
[Margins](#)



Landscape image/Paper
loaded in landscape:
[Margins](#)



Landscape image/Paper
loaded in portrait:
[Margins*](#)



****SPECIAL CASE:*** For users who want to produce a landscape print with the largest paper size their printer supports.

Associated topics:

[How to calculate a printable area](#)
[Printable areas for some standard paper sizes](#)

To print this or any other help topic, choose **Print Topic** from the **File** menu in the Help window.

Printer Type

During the installation of this printer driver you were asked to choose from a list of printer types. Each printer type that you chose has been added to the list of printer types that Windows can use. This list of installed printer types is displayed in several dialog boxes; in many cases the list box is called: **Installed Printers** or **Specific Printer**. If you want to use a printer type that isn't listed in these boxes, you'll need to install it from the driver installation disk (installation instructions are on the disk label).

To change the selected printer type (displayed in the title bar of the **Setup** dialog box), go to the **File** menu and select the menu item used to configure printers; in most cases this menu item will be **Printer Setup**. This dialog box contains a list of printer types. Simply click on the name of the printer type you want to use. This dialog box will include only those you selected at installation time.

Associated topics:

[Supported printers](#)

To print this or any other help topic, choose **Print Topic** from the **File** menu in the Help window.

Printed Color Control

Printed Color Control lets you individually control the appearance of: colored text, business graphics and photographs (scanned images) in one of three ways:

Vivid Color provides clear and vivid color output. There may be a slight sacrifice in hue on some images. This is the default setting.

Match Screen provides the closest printer-to-screen color matching. If selected, you should have performed screen calibration by clicking the **Calibrate Screen...** button.

Select **No Adjustment** if you want the colors selected in your software application passed through to the printer without adjustment*.

The **Lightness** (lightness/darkness) control enables you to adjust the overall lightness and darkness of the image.

* For no **Lightness** (gamma) adjustment select the darkest setting.

If you decide to select your own **Printed Color Control** settings you may find it necessary to experiment with different color-option combinations to find the settings you need for different printing situations.

Associated topics:

[Automatic](#)

[Calibrate Screen](#)

To print this or any other help topic, choose **Print Topic** from the **File** menu in the Help window.

Printing areas with gradient shading

Problem: Black lines appear in areas filled with gradient shading.

If you see this problem use the driver's "Process document in computer" setting.

Printing lines

Potential problems:

- a) The number of dashes that make up a dashed line changes with the angle of the line. If you see this problem and would like to avoid it use the driver's "Process document in computer" setting.
- b) Lines which are composed of dots and/or dashes may display the background color in the foreground area. To solve this problem use the driver's "Process document in computer" setting.

Print Quality

The **Print Quality** drop-down list box offers the following three quality levels:

Enhanced (best) produces the highest print quality. It's available with all of the HP DesignJet series except the HP DesignJet and HP DesignJet 200.

Final (normal) produces very good print quality. Its printing speed is a little faster than that of the Enhanced mode. Final is the highest quality available for the HP DesignJet and HP DesignJet 200.

Draft (fast) has the fastest printing speed, but has the lowest quality. Use it when speed is more important than quality.

All HP DesignJet printers (except HP DesignJet 230, 250C, 750C and 755CM)

Please note that each time you send a print, the printer's quality level setting is changed to match this **Print Quality** setting. This means that anyone who 1) is networked to your printer and 2) doesn't have a printer driver with a print quality setting will be affected by the change caused by your print.

Readme.txt

Readme File for the Hewlett-Packard HP-GL/2 Windows Driver

Product name:

HP Printer Driver
(HP-GL/2 and HP RTL)
for Microsoft Windows.

Version number: v2.1

Language(s) supported: English, French, Italian, German, Spanish

Products supported:

HP DesignJet
HP DesignJet 200
HP DesignJet 220
HP DesignJet 230
HP DesignJet 250C
HP DesignJet 600
HP DesignJet 650C
HP DesignJet 750C
HP DesignJet 755CM

Installation instructions: See detailed instructions at the end of this file.

Platform requirements: MS Windows 3.1 or later. MS Windows 95

SOFTWARE APPLICATION NOTES:

The following section details late-breaking news regarding the use of this driver with some popular software applications.

Aldus Freehand 4.0 users

If the user works with another application while Freehand is printing, the printing may be aborted. To avoid this problem, do not use Windows until the Freehand printing has finished.

Aldus PageMaker version 5.0

Problem: The colors for some area fills are converted to solid colors.

Solution: Update to version 5.0a of the program.

Corel application users

In CorelDraw 5.00.D1 and earlier versions, a floating point division by 0 exception can occur if you try to plot 5EFFECTS.CDR and others drawings with A1 and landscape settings. This problem has been fixed in any newer version of CorelDraw. Upgrade to CorelDraw! 5.00.E2 or any later version (if you are unsure about your current CorelDraw! version, click on "About" in "Help").

Lotus 123 users

When using this application you may see characters which overlap each other on the right side of the page. Try using the 'Process document in computer' option. It may fix the problem.

Micrografx Picture Publisher 5.0

When printing from this application, set the checkbox 'Use printer screening' in the print dialog box in

order to get maximum quality color reproduction from your HP DesignJet printer. If you don't select this option and you print a long axis plot, you may see a black rectangle covering all, or part, of your drawing.

Non-application-specific information:

(1) Using 'Process document in computer' option

If this processing mode is used with the printer connected to a local PC port, using the Print Manager spooler is strongly recommended.

(2) TRUE TYPE FONTS: problems with italic, rotated characters

If you use italicized and rotated text in your document and your printed output is not the same as you can see on your screen, check that you are using a font which is an actual TrueType font.

Workaround (a): choose an TrueType Italic Font which is listed in the Control Panel's "Fonts" dialog box.

Workaround (b): use the 'Process document in computer' option when you print.

(3) Excessive "Application lock-out" time (Win 95)

If you find that you are locked out of your application for an excessive amount of time when you send a file to be printed, it could be because "Enhanced MetaFile spooling" has been disabled. This problem can be caused by an old version of Adobe Type Manager (ATM), even if it is disabled. We recommend that you upgrade to the latest version of ATM.

INSTALLATION INSTRUCTIONS

IMPORTANT

No other applications should be running when you install this driver.

Quick Installation from Windows 3.1

1. Insert the driver disk into the A (or other) drive of your computer.
2. In the Program Manager, select File and then Run...
3. On the Command Line, type a:\install and click on OK.
4. Select the desired configuration in the Installation dialog box and click on OK.

Quick Installation from DOS (Windows not running)

1. Insert the driver disk into the A (or other) drive of your computer.
2. Type: win a:\install.
3. Select the desired configuration in the Installation dialog box and click on OK.

Standard Windows 3.1 Installation

1. Insert the driver disk into the A (or other) drive of your computer.
2. Open the Program Manager in MS Windows.
3. In the Program Manager, select Main.
4. In Main, select Control Panel.
5. In Control Panel, select Printers.
6. In the Printers dialog box, click on Add Printer >>.
7. In the List of Printers list box, double click on the Unlisted Printer entry.
8. In the Add unlisted printer dialog box, double click on the A: (or other) drive in the Directories list box.
9. Double click on the model name of the printer you want to install in the "Printer model" list box.
10. Click on Use Print Manager.
11. In the Printers dialog box, click on Connect.
12. In the Printers - Connect dialog box, click on the desired port.
13. In the Printers - Connect dialog box, change both the Device Not Selected and Transmission Retry

timeouts to 900 and click on Fast Printing Direct to Port. Click on OK

14. Double click on the desired installed printer so it appears in the Default Printer box. Click on Close.

Standard Windows 95 Installation

The driver you have received was written for a pre-release version of Windows 95. For this reason you are recommended to contact customer support to ensure that you have the latest version of the driver. Refer to the Customer Support section on page 7 of this driver's "Installation Guide" for details.

Note that, unless stated otherwise, all mouse clicks in the following procedure assume you are using the left mouse-button.

1. With the "HP Printer Driver (HP-GL/2 and HP RTL) for Microsoft Windows 3.1 and Windows 95" disk inserted in your floppy drive and with Windows 95 running, click on Start, select Settings and then Printers to open the Printers dialog box.

2. Double-click on the Add Printer icon to open the Add Printer Wizard dialog box.

3. Follow the steps displayed on your screen. Below is a series of questions which, depending on your system configuration, you may be requested to answer.

How is this printer attached to your computer?

Select:

Local printer if the printer is connected to your computer by a cable running directly between them.

Network printer if the printer has a network option installed, such as "The HP JetDirect Network Interface", and you will use it to communicate with your printer.

Do you print from MS-DOS-based programs?

We recommend that you select No, select Yes only in the case where you have an MS-DOS driver which can print to a HP DesignJet series printer.

Would you like to print a test page?

We recommend that you select Yes.

By printing a test page you will test the communications link between your system and the printer.

4. At the end of the installation procedure you will see the Software Application Notes section of the driver's help system. You are recommended to read the sections which apply to the applications which you use, after which you can close the help file and you will be returned to the Windows' 95 "Add Printer Wizard" dialog box.

5. Remove the driver installation disk.

Some applications have an overriding orientation setting

The following table lists some commonly-used applications with their own orientation setting that overrides the driver's Orientation setting. (In applications, the orientation setting can usually be found by selecting Page Setup, Print, or a similarly-named command from the File menu.) For predictable results in all cases check to see if the application has an orientation setting, if so you should match its setting to the driver's Orientation setting.

Some applications with an overriding orientation setting:

- CorelDRAW
- Lotus Freelance Graphics
- Microsoft Excel for Windows
- Microsoft Word for Windows

Some applications do not work with large paper sizes.

Some applications generate internal errors when the paper size is too large. Depending on the behavior of the application you may see one or more of the following symptoms:

- missing objects,
- mis-shaped objects,
- corrupted output,
- no output,
- General Protection Faults (GPFs).

Some applications try to limit the reported paper size to an acceptable size. This however does not ensure that the above problems will be avoided, the reported paper size may still, in some cases, cause problems.

The applications exhibiting this problem are listed below with their maximum supported paper sizes:

Application:	Max paper size:
Aldus PageMaker 5.0	40" x 40" (101 x 101cm)
Corel Ventura 4.2	A2, C
CorelDRAW 5.0	30" x 30" (76 x 76cm)
QuarkXPress 3.3	26" x 26" (66 x 66cm)

Supported Printers

This driver supports the following printers:

Printer Name	Model Number
HP DesignJet Printers	C1633A, C1633B
HP DesignJet 200 Printers	C3180A, C3181A
HP DesignJet 220 Printers	C3187A, C3188A
HP DesignJet 230 Printers	C4694A, C4695A
HP DesignJet 250C Printers	C3190A, C3191A
HP DesignJet 600 Printers	C2847A, C2848A
HP DesignJet 650C Printers	C2858A, C2859A C2858B, C2859B
HP DesignJet 750C Printers	C3195A, C3196A
HP DesignJet 755CM Printers	C3198A

Although there are older printer drivers with similar names to this one, please note that in the Windows operating environment you should use only *this* driver to print with the devices listed above (read the notes below). Older drivers use a less-efficient graphics language and have limited features and settings.

Note to AutoCAD Release 12 & 13 for Windows users

The exception to the above paragraph is that we don't recommend using this Hewlett-Packard driver when you're running AutoCAD Windows. Instead, use the Hewlett-Packard driver that was shipped with AutoCAD.

To print this or any other help topic, choose **Print Topic** from the **File** menu in the Help window.

Used standards

The list of standard paper sizes has the following options:

[ANSI](#)
[Architectural](#)
[DIN](#)
[ISO](#)
[JIS](#)
[Oversize](#)

Only when an option from the **Used standard** list is enabled will the sizes it defines be available in the **Paper Size:** drop-down list in the setup dialog box.

Users of paint and image-processing applications

(such as Aldus PhotoStyler, Publisher's Paintbrush)

Because of the large amount of data involved, printing large-format raster images (such as scanned images) will proceed slowly.

Using the "Process document in computer" option

If this processing mode is used with the printer connected to a local port, use of the "Print Manager" spooler is highly recommended.

Using the Oversize feature

In order to use the **Oversize** feature you must:

a) select **Oversize** in this **Used standards** dialog box

AND

b) select the appropriate 'oversize' option from the **Paper Sizes** list.

Vivid Color

Vivid Color provides clear and vivid color output. There may be a slight sacrifice in hue on some images. This is the default setting.

**** Application notes start here**

Software application notes

This topic contains general information to help you use this driver. The information will help you to better understand how the driver interacts with software applications.

The [README.TXT](#) file contains late breaking information relating to popular software applications. If you are having problems working with a particular application, this file may contain information to help you find a solution.

[General information](#)

Application specific information:

[Aldus Applications](#)

[AutoCAD for Windows users](#)

[CorelDRAW/PHOTO-PAINT users](#)

[Lotus Applications](#)

[Micrografx Designer \(v4.0 & v4.1\) users](#)

[Microsoft Applications](#)

[QuarkXPress users](#)

[Software Publishing Corporation Harvard Graphics \(v2.0 & v3.0\) users](#)

Aldus Applications

Aldus FreeHand (v3.1) users

Problems exist with gradient fills in documents imported from the Macintosh version of FreeHand. If you see black lines in areas where you expect a gradient fill, we recommend that you replace the gradient fill area done on the Macintosh with a gradient fill done with Windows.

Aldus FreeHand (v4.0) users

If you use another application while Freehand is printing, the printing may be aborted.

To avoid this problem, do not use Windows applications while Freehand is printing.

Aldus PageMaker (v5.0) users

a) We recommend that you do not use the "Double-sided", "Facing pages", or "Letterhalf" options under "Page Setup". This is because our driver has different right, left, top, and bottom margins.

b) You should also be aware that some PageMaker line attributes are not printed properly when using our driver.

c) Maximum page size = 40 x 40 inches (1016 x 1016 mm)

d) While printing, you will be locked out of the computer and you will not be able to use other applications.

e) Colors for some area fills are converted to solid colors. You are recommended to upgrade to PageMaker version 5.0a.

Aldus Persuasion (v2.1) users

The slide dimension specified in the "Slide Setup" menu should not exceed 17 x 22 inches (431.8 x 558.8 mm).

Associated topics:

[Some applications do not work with large paper sizes](#)

[Color intensity using the print "Color as Grayscale" setting](#)

[Printing lines](#)

[Printing areas with gradient shading](#)

Micrografx Designer (v4.0 & v4.1) users

- 1) Problems exist which cause objects (such as a line) to be clipped to 55 inches in length.
- 2) Plots with curved objects may be printed in a different perspective to that shown on your screen. This version of the application has a problem with Bezier curves, Micrografx Designer v4.1 has fixed this problem.
To solve this problem you can either upgrade, or use the driver's "Process document in computer" setting.

Software Publishing Corporation Harvard Graphics (v2.0 & v3.0) users

a) Problems exist that cause some pattern fills to be printed incorrectly.
We recommend using a hatch fill if you see this problem.

b) You cannot change the **Custom Paper Size** from the **Print Setup** dialog box of the application, it will not be accepted.

You are recommended to set the **Custom Paper size** from the **Control Panel** before you start the application.

QuarkXPress users

QuarkXPress (v3.12) users:

When used with our driver, there is a limitation on image width of approx. 26 inches.

Tiff files are printed with poor quality. The "Using QuarkXPress" manual (page 7.21) states the following:

"When you print a document containing an EPS or TIFF picture to a non-PostScript printer, QuarkXPress prints the low-resolution image stored in the document. Non-PostScript printers cannot print the information contained in an EPS file."

QuarkXPress (v3.3) users:

a) If you configure to print to "File:", and you do not type the destination file name in the "Print to file" dialog box, you will not be able to print again until you restart the application.

b) If you try to print the sample file WORLD.CUP.QXD on a HP DesignJet 650C or 250C, you may see a "General Protection Fault". This problem is caused by the position of the map of America which covers the left half of the background. By moving this map by a small distance inwards direction you will find that you are able to print this drawing.

Associated topics:

[Some applications do not work with large paper sizes](#)

[Color intensity using the print "Color as Grayscale" setting](#)

[Printing lines](#)

[Printing areas with gradient shading](#)

AutoCAD for Windows

Releases 12 and 13 for Windows

IMPORTANT

AutoCAD Release 12 and 13 users should refer to the document "AutoCAD Drivers for HP Plotters" supplied with your printer, for important information.

Paper size selection - Print Configuration dialog box

From AutoCAD's "Print Configuration" dialog box it is possible to view the available paper sizes by using two different methods:

- i) via "Print Setup" - by clicking on the "Device and Default Selection" button to display its dialog box and subsequently the "Change Device Requirements" button to display the "Print Setup" dialog box, then clicking on the "Size" button.
- ii) via "Paper Size" - by clicking on the "Size" button to display the "Paper Sizes" dialog box.

If you select a paper size from the "Size" drop-down menu of the "Print Setup" dialog box it will affect the menu of paper sizes you see when you display the "Paper Sizes" dialog box. The list of paper sizes will be limited to all known sizes smaller than or equal to the size currently selected in the "Print Setup" dialog box and this size is renamed here to "MAX" and adjusted to take into account the margins used by AutoCAD.

Recommendation: When you have decided to use a particular paper size ensure that it is currently selected in the "Print Setup" dialog box and then you should always select the size called MAX in the "Paper sizes" dialog box.

Release 11 for Windows: use the Autodesk driver instead of this one

When using AutoCAD Release 11 for Windows, we recommend printing with the Autodesk driver that was automatically loaded when you installed AutoCAD. Follow the steps below to ensure that you've selected the recommended driver in AutoCAD.

Step 1. From the AutoCAD main menu, choose "Configure AutoCAD" from the utilities menu.

Step 2. Read the text to the right of "Printer." If it says,

"Hewlett-Packard HP-GL/2 V1.0 ADI 4.1 - By Autodesk,"

the printer configuration is correct and you don't need to do anything else; if it says something different, continue with the next step.

Step 3. Press Enter and type 5 to select "Configure printer."

Step 4. Type Y to the question, "Do you want to select a different one?," and type 6 to select

"Hewlett-Packard HP-GL/2 V1.0 ADI 4.1 - By Autodesk."

Step 5. Answer any remaining questions and return to the main menu. Be sure to save the configuration changes you just made.

CorelDRAW/PHOTO-PAINT users

General notes:

- 1) If you are trying to print a drawing that needs rotation i.e. an A1 drawing on a 24" plotter AND the drawing contains Corel pattern fills we recommend that you use the driver's "Process document in computer" setting. The area fills generate large output files which obviously take a long time to send to the printer and may generate an "Out of memory" error which prevents printing. Using the suggested driver setting you can avoid the memory problem and your drawing will be printed.
- 2) If you're using CorelDRAW with this driver, you can only produce A- and B-size prints from a TIFF drawing.

Version specific notes:

CorelDRAW (3.0 Rev. B and later) slow printing

To speed the printing of gradient filled objects, add the following line to the [CDrawConfig] section of the coreldrw.ini file:

```
UseClippingForFills=0
```

For more information on locating and modifying this file, please contact Corel Corporation Software Support.

CorelDRAW (v3.0/v4.0) users

Corel 3.0 maximum page size = 20 x 20 inches (508 x 508 mm)
Corel 4.0 maximum page size = 30 x 30 inches (762 x 762 mm)

When canceling a drawing from CorelDRAW follow the procedure provided in the "Canceling print from your application" topic in the driver's help system. Immediately following a print cancel your computer may be slow to respond until CorelDRAW has performing a screen re-paint operation.

CorelDRAW (v5.00D1) and earlier versions

A floating point division by 0 exception can occur if you try to plot 5EFFECTS.CDR and other drawings with A1 landscape settings. This problem has been fixed in later versions, you are recommended to upgrade (if you are unsure about your version number, click on "About" in "Help".)

Corel PHOTO-PAINT (v4.0) users

We recommend the free upgrade from Corel to v4.00.b3 for better performance with our driver.

Associated topics:

[Some applications do not work with large paper sizes](#)
[Color intensity using the print "Color as Grayscale" setting](#)
[Printing lines](#)
[Printing areas with gradient shading](#)

Microsoft Application users

Microsoft Project users

Margins

The default margins in Microsoft Project's Page Setup dialog box are too small for the printers this driver supports. To remedy this problem, we recommend that you refer to the [driver margins table](#) and enter the margins for your printer type into Microsoft Project's Page Setup dialog box.

Print length limit

You are recommended not to attempt to print a drawing which is 1524 mm (60 in) or longer, it may cause Microsoft Project v3.0 to hang. Microsoft Project v4.0 seems to have solved this problem.

Microsoft Word for Windows (v2.0/v6.0) users

a) Problems exist in v2.0 that cause the bottom line of double underlines for ATM (PostScript Type 1) fonts to be clipped. For v6.0, the problem seems to only occur if the double underline text is also a subscript.

b) When printing "To file" make sure that the characters used to specify the path and filename do not exceed 31 characters. If you have used a path/filename which exceeded 31 characters only the first 31 characters will have been used to specify a path and a filename.

Microsoft Works version 3.0 users

When using large size paper (i.e. A0 and E size) you may see a 'Divide By Zero' error message when you choose: Print Preview, or Print, AND your system is configured for one of the following devices:

HP DesignJet 200 (C3181A)
HP DesignJet 220 (C3188A)
HP DesignJet 230 (C4695A)
HP DesignJet 250C (C3191A)
HP DesignJet 600 (C2848A)
HP DesignJet 650C (C2859A)
HP DesignJet 650C (C2859B)
HP DesignJet 750C (C3196A)
HP DesignJet 755CM (C3198A)

There is a work-around solution for the above problem (Microsoft and Hewlett-Packard are working on a permanent solution). Please repeat the driver installation procedure and choose an alternative printer, see below, from the drop-down list box of the Installer dialog box.

If you were configured for:

HP DesignJet 200 (C3181A)
HP DesignJet 220 (C3188A)
HP DesignJet 230 (C4695A)
HP DesignJet 250C (C3191A)
HP DesignJet 600 (C2848A).
HP DesignJet 650C (C2859A)
HP DesignJet 650C (C2859B)
HP DesignJet 750C (C3196A)
HP DesignJet 755CM (C3198A)

Choose this alternative:

HP DesignJet 200 (C3180A)
HP DesignJet 220 (C3187A)
HP DesignJet 230 (C4694A)
HP DesignJet 250C (C3190A)
HP DesignJet 600 (C2847A)
HP DesignJet 650C (C2858A)
HP DesignJet 650C (C2858B)
HP DesignJet 750C (C3195A)
HP DesignJet 750C (C3195A)

Remember to re-configure your system to use this new device, i.e. via Print Setup..., or Control Panel etc.

Note that for landscape images which are D/A1 sized, or just smaller, the 'alternative' driver, which should also be set to landscape, will work best with paper loaded in portrait orientation. This is because for large images the driver automatically re-orientates the image to portrait orientation in order

to avoid image clipping.

For example if your landscape image is D/A1 sized you should set the orientation setting in the driver to landscape and load the D/A1 sized paper in portrait orientation.

For further information see [Margins Portrait paper/Landscape image](#) .

Microsoft Excel users with DesignJet Series printers

Excel 4.0 has its own Copies setting in its **Page Setup** dialog box and may cause problems with this driver. We recommend that you use Excel as a means of requesting multiple copies of a print and set the **Copies** field in the **Setup** dialog box in the driver to 1.

Microsoft Excel (v4.0 and v5.0) users

We recommend using the driver control panel for page setup rather than using the **Page Setup** menu within the application.

Problems also exist that prevent printing of some border patterns that appear on the screen. Excel V5.0 seems to have fixed these problems.

Some light fill patterns in Excel 5.0 may not come out as shown on the screen. If you are having this problem, we recommend using **Manual Color** and selecting **No Adjustment**.

Associated topics:

[Some applications do not work with large paper sizes](#)
[Color intensity using the print "Color as Grayscale" setting](#)
[Printing lines](#)
[Printing areas with gradient shading](#)

Lotus Applications

Lotus 1-2-3 (4.0) users

- a) The "Preview" feature of Lotus 1-2-3 with the following page formats and sizes:
594 x 841 mm (ISO A1) or larger, or
22 x 34 in (ANSI D) or larger
- b) You cannot print nor preview Lotus 1-2-3 files with the following page formats and sizes:
841 x 1188 mm (ISO A0) or larger, or
34 x 44 in (ANSI E) or larger
- c) There is a difference between Lotus 1-2-3 and your printer driver in the way they handle certain colors. When these colors are used for solid area fills they are reported to the printer driver as a mix of colors to be mixed by the printer using a process known as 'dithering.' When these colors are printed they are not solid and appear to have a very fine pattern.
- d) Problems exist that cause the orientation of some patterns to be printed differently than shown on the screen. Also, page sizes larger than ANSI-C may not print.

Lotus Ami Pro (v3.0 & v3.1) users

- a) To improve printing of hatch patterns, add the following line to the [AmiPro] section in the C:\WINDOWS\AMIPRO.INI file.

DefOptions1=2
- b) If your document uses vector fonts (i.e. Modern, Roman, Script) you may see a difference in the printed fonts if you change between the Print document... "In printer" and "In computer" settings.

To avoid these differences of font use only TrueType fonts.
- c) Windows 95 only - If your documents are printed using the wrong pattern fills, check the "Print in background" setting. If it is selected, this could be the cause of the problem. We recommend that you de-select this setting. To access the setting go to the **Tools** menu and select **User setup** then **Options**. The "Print in background" setting is in the "User Setup Options" dialog box.

Lotus FreeLance Graphics (v2.0 & v2.1) users

To prevent unexpected results when printing in color, make sure the "Adjust color library for color printing" switch is disabled when doing a 'Print'.

Problems exist that prevent the background from being printed on a DesignJet 600.

Associated topics:

[Some applications do not work with large paper sizes](#)
[Color intensity using the print "Color as Grayscale" setting](#)
[Printing lines](#)
[Printing areas with gradient shading](#)

General Troubleshooting

More troubleshooting hints which are specific to printer types are available at the end of this list.

Click on the symptom to view the possible solution.

[If the printer you want to use isn't displayed in the Control Panel \(Printers dialog box\)](#)

[If the top and/or bottom of your print is missing \(clipped\)](#)

[If the driver's Orientation setting seems to have no effect on prints](#)

[If printing text produces unexpected results](#)

[If your printer is unusually slow or appears to be "hung".](#)

[If your computer displays a time-out message before all print data has been received by the printer](#)

[If the printed drawing size is smaller than the driver's Paper Size setting](#)

[If you have disk space problems or misplaced objects when you print a drawing \(Windows 95 only\)](#)

Further information

[Font support and recommendations](#)

[HP DesignJet series printers](#)

Alternatively, refer to the following documents for help.

The user's guide for your printer, and

The user's guide for your software application.

To print this or any other help topic, choose **Print Topic** from the **File** menu in the Help window.

Troubleshooting HP DesignJet series printers

- * **If the color of printed ATM text is not what you expect**

The color of ATM text sent as graphics is enhanced according to the **Graphics** setting in the driver and not as **Text**. This driver no longer requires the ATM Control Panel to be set as "Print ATM fonts as graphics", instead you are recommended to select "Use pre-built or resident fonts". This setting will avoid any differences in text color and will improve performance.

- * **If prints won't rotate using the printer's front panel Rotate feature (HP DesignJet and HP DesignJet 600 printer users only).**

Your print may have rasterized data in it. Due to rotate buffer memory limitations, rasterized drawings (e.g., drawings with heavy area fill and shading that you've scanned into your application) can't be rotated from the printer's front panel. Try using your application's rotate feature.

- * **If filled and overlapping objects are printed incorrectly.**

The HP DesignJet 200, 220, 230, 250C, 600, 650C printers are capable of printing both rasterized data and overlapping objects correctly. The HP DesignJet printers are raster-capable, but they can't print overlapping objects correctly and they have more raster limitations than the later DesignJet models.

- * **If printed gray shades look different than expected.**

Make sure that your application software, and not your printer, is set to be the source of pen parameters. For instructions refer to one of the following:

[HP DesignJet printer notes](#)

[HP DesignJet 200, 220, 230 and 250C printer notes](#)

[HP DesignJet 600, 650C, 750C and 755CM printer notes](#)

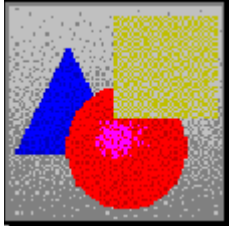
- * **If the printer's expanded margin feature doesn't work.**

This driver doesn't support the Expanded margin feature.

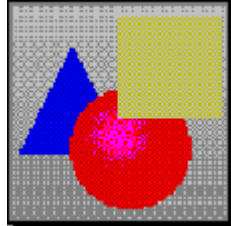
****Pop-up box texts start here**

Examples of halftoning

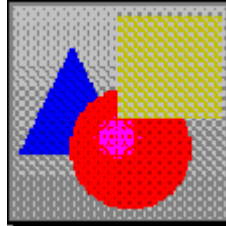
Scatter



Pattern



Cluster



Try this:

Run the driver's install program again and select the new Printer type.

For instructions refer to "Installing with the driver's quick "install" program (recommended method)," in the guide that came with this driver.

Try this:

- 1) Make sure the driver's Paper Size setting is exactly the same as the Page Size you've specified in your application.

OR

- 2) Do one of the following:
 - a) Adjust the margin settings in your application to match the driver's margin settings for the selected printer type, see [Printer margin settings using this driver](#), or
 - b) scale down the size of the drawing in your application, or
 - c) increase the Paper Size setting in the driver and ensure that your loaded paper is large enough for the new Paper Size setting

Try this:

Your application may have an orientation setting that overrides the Orientation setting in this driver's Set up dialog box. We know that the following applications work in this way, and there may be others as well:

Lotus Freelance Graphics,
Microsoft Excel for Windows, and
Microsoft Word for Windows.

For predictable results in all cases you should match the driver's Orientation setting to the application's orientation setting.

Try this:

If:

- * text is not printed, or
- * objects are misplaced

Refer to [Font support and recommendations](#), to learn about this driver's font support for each printer type.

Try this:

- 1) Make sure you're using the recommended font type. Refer to "Font support and recommendations," for more information. Multi-page documents print very slowly and the printer may appear to be "hung." If this happens, try using one of the TrueType fonts or one of the standard Windows vector fonts instead.

AND

- 2) Check the Orientation and Paper Size settings in the driver. If you're printing in landscape mode on the largest paper size of your printer, printing may be very slow. If you want to print faster, change the driver's Orientation setting to *portrait*, and rotate the drawing 90 degrees in your application.

Try this:

Try increasing the Transmission Retry value to 900 seconds. To access this setting choose Control Panel, Printers, then Connect.

Try this:

- 1) Make sure that the driver's Paper Size setting is exactly the same as the Page Size you've specified in your application.

AND

- 2) Your application may have a maximum print size limit. If so, your drawing will be truncated at the limiting dimensions. For example, some applications limit drawings to 18.0 x 18.0 inches (457 x 457 mm); if you specify a larger Paper Size in the driver - "ANSI E 34 x 44 in," for example - your 18.0 x 18.0-inch drawing will be printed in one corner of the E-size paper.

Try this:

For Windows 95 users, the default spooling format is **EMF** (Enhanced Metafile). By using this format, the application is freed from printing sooner. However, under some circumstances the EMF format can cause problems such as disk space or misplaced objects. If you encounter such problems, choose the **RAW** spool format and try to print again. To change the spool format go to **Printer properties**, choose the **Details** tab and click the **Spool Settings** button.

length

Enter the largest dimension of your paper in this field, regardless of its axis relative to the printer.

This driver supports the following printers:

Printer Name	Model Number
HP DesignJet Printers	C1633A, C1633B
HP DesignJet 200 Printers	C3180A, C3181A
HP DesignJet 220 Printers	C3187A, C3188A
HP DesignJet 230 Printers	C4694A, C4695A
HP DesignJet 250C Printers	C3190A, C3191A
HP DesignJet 600 Printers	C2847A, C2848A
HP DesignJet 650C Printers	C2858A, C2859A, C2858B, C2859B
HP DesignJet 750C Printers	C3195A, C3196A
HP DesignJet 755CM Printer	C3198A

Units

Using this button you can switch between 'inch' and 'mm' to select the units of measurement.

What is ANSI?

ANSI is an abbreviation for American National Standards Institute.

What is Architectural?

"Architectural" represents a series of media sizes which have been created to suit the needs of the construction industry, stated in inches.

What is DIN?

DIN is an abbreviation for Deutsche Industrie Norm.

What is ISO?

ISO is an abbreviation for International Standardization Organization.

What is JIS?

JIS is an abbreviation for Japanese Industrial Standard.

width

Enter the smallest dimension of your paper in this field.

