



Welcome

[The RIP Family](#)

[Introducing RipBAR](#)

[Credits & Thanks](#)

[License & Distribution Information](#)

[About The Author & Registration](#)

[New In This Version](#)

[Getting Help](#)

[Monochrome Support](#)

[Tips, Tricks & Things](#)

[Installation](#)



RipBAR Pro

[About RipBAR Pro](#)



Procedures

[Adding Items To The Bar](#)

[Adding And Managing Groups](#)

[Reordering ToolBar Items](#)

[Reordering ToolBar Groups & Tabs](#)

[Group & Tab Management](#)

[Moving ToolBar Items Between Groups](#)

[Copying ToolBar Items To Other Groups](#)

[Launching Applications](#)

[Launching Applications With A Document](#)

[Launching Applications With The RUN Tool](#)

[Customizing RipBAR \(Preferences\)](#)

[Customizing RipBAR's Background](#)

[Popout Groups & Changing A Group's View Mode](#)

[Minimizing RipBAR](#)

[RipBAR Item Menu Popups](#)

[Customizing RipBAR Items](#)

[Deleting RipBAR Items](#)

[Changing The Way RipBAR Looks](#)

[Importing Items From Program Manager](#)

[Exporting Groups To The Program Manager](#)

RipBAR Tools



[System Information Tool](#)

04:33
SEP 26

[Clock Tool](#)



[Resource Tool](#)



[Memory Tool](#)



[Task Manager Tool](#)



[Resource Tracker](#)



[Notes Tool](#)



[Exit Tool](#)



[RUN Tool](#)



[Print Tool](#)



[Preferences Tool](#)



[Performance Tool](#)



[ASCII Tool](#)



[Disk Tool](#)

Other / Miscellaneous

[Sound Support](#)

[RipBAR As Windows Shell](#)

Keyboard Usage

The RipBAR Menu

Separate Memory Space

Performance Tool Problems



Troubleshooting

Introduction To Troubleshooting

The RIP Family



The RIP family of applications / utilities is a collection of shareware programs written for Windows and Windows NT. Each is designed to fulfill a purpose in an elegant, easy-to-use fashion.

What you have now is RipBAR. Others include RipSPACE and the soon-to-be-released, RipFIND. All RIP applications have a registration fee which you are expected to pay if you continue to use them. The amounts asked for are reasonable and I ask that you think twice about continuing to use something you haven't paid for. None of the RIP applications have disabled functions, or annoying "Register Me" reminders-- so I leave it up to you. In return for your registration, I'll keep you up-to-date on news about new releases, new products etc.

To learn more about RipBAR proceed on to the introductory sections of this help file. Short advertisements for RipSPACE and RipFIND are presented below:

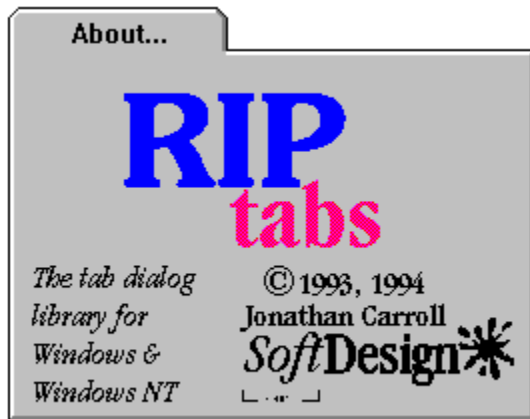
RipSPACE



RipSPACE is an application written for Windows & Windows NT that analyzes a drive and the space that each sub directory on it, consumes. In other words, you'll now be able to find out how much space your Windows installation is taking up, or how much drive space you'll gain if you delete the WordPounder word processor you installed but never use.

RipSPACE also allows you to define file types that are to be included in a file report. You can then tell how much total space is being taken up by certain file types-- i.e. Bitmaps, Dynamic Link Libraries and executable files.

RipTABS



This programmer's library takes most of the work out of creating and maintaining tab dialogs in your application. Versions exist for Windows 3.1X and Windows NT. Available as either a static library for Microsoft Foundation Classes users, or as a DLL for use in many Windows development environments.

Features include variable size tabs, bitmaps in tabs, custom font handling, keyboard navigation and more!

Jonathan Carroll

Introducing RipBAR



RipBAR is in some ways, the Swiss Army knife of utilities. It combines an application toolbar, command line launching, Drag & Drop server, memory and system information display, Post-It style notes, hot key support and more in a package that remains unobtrusive on your screen.

What you have now is Version 7.0 -- the most recent update to RipBAR. It is the culmination of many months worth of work and updates-- I hope you enjoy it and find a permanent place for it on your system.

RipBAR is available in separate files for Windows 3.1, Windows 95 and Windows NT. While the three versions are similar in most respects, differences between them will be pointed out whenever necessary. In some cases, pictures in this help file may differ slightly from what you actually see on the screen.

(Note: When we refer to Windows NT 4.0 in this manual, we are referring to Windows NT V3.51 with the Windows 95 Shell Preview package.)

RipBAR is an icon toolbar that you may set up with applications of your choice. Configuration options include the ability to set up startup directory, and command line parameters. Additionally, files may be dropped onto the application icons sitting on the bar-- causing the application to launch and open that file automatically.

The Windows 3.1 version displays the time, memory information, and the remaining resources available to the system. The *Resource Tracker* (Windows 3.1 only) is included to allow you to monitor an application's use of memory and resources.

The Windows NT version displays the time, along with available physical and paged RAM.

In addition, RipBAR supports attaching sound to certain types of events, HotKey activation, program groups and much more. Be sure to take some time to review this entire Help file so that you don't miss out on features!

Credits & Thanks

First off, thanks to all those who have registered RipBAR-- and there are more of you every day. Your contribution to this project is greatly appreciated!

A second set of thank-you's go out to those who have sent me email messages (to the point that answering is almost a full-time job) either pointing out problems or proposing enhancements-- these don't go unnoticed as many of you have found out. The continuing improvement and evolution of RipBAR is as much a product of your time as it is mine.

Finally, the following people are owed special thanks for one reason or another:

Naomi-- for watching patiently many a night as I was busy getting something "just right". There were a couple of times she rescued the keyboard before I propelled it through a window.

Pierre-- who nagged (and nagged again) until I did RipTABS-- the product that eventually transformed RipBAR's dialogs into tab dialogs.

Rob & Phil-- the "Van Down By The River" boys who have yet to register RipBAR but who have been invaluable in beta-testing RipBAR. Rob provided the types of suggestions for enhancements that the average user could appreciate, while Phil provided the types of suggestions that only someone in a straight jacket would understand. They were both there with the "Moose Call" when things weren't right.

License & Distribution Information

RipBAR

(RipBAR Pro License Follows)

© 1993- 1995, Jonathan Carroll.

All Rights Reserved.

RipBAR is **not** public domain software. It is a Shareware application for which the author (the copyright holder) reserves all rights exclusively.

RipBAR is provided free-of-charge for an evaluation period that is not to exceed thirty (30) days. After this period, you are expected to register the software (see [About The Author & Registration](#)) if you intend to continue using it, or destroy all copies of it should you decided that RipBAR is not worth the registration. Note that Shareware (and thus RipBAR), like any other commercial software, is protected by copyright law.

The Author encourages the re-distribution of RipBAR in a number of forms including:

- Bulletin Board Systems (BBS services)
- Disks that accompany magazines
- Shareware collections (with certain restrictions outlined below)

Restrictions

- RipBAR **may not be distributed with any commercial software product without the prior, express, written permission of the author.**
- RipBAR **may not be used for promotional purposes regardless of what the promotion is for, without the prior, express, written permission of the author.**

RipBAR Pro

© 1993- 1995, Jonathan Carroll.

All Rights Reserved.

RipBAR Pro is **not** public domain software. It is a commercially-sold application for which the author (the copyright holder) reserves all rights exclusively.

Restrictions

- You may make one copy of RipBAR Pro for backup purposes. You may install RipBAR Pro on any number of computers *personally owned by you* provided no two (or more) copies are in use at any one time.
- You may transfer your RipBAR Pro license to somebody else provided you destroy all copies of the software in your possession.

About The Author & Registration

I want to thank you for trying RipBAR. It is designed to provide the most convenient access possible to applications without having to remember hot keys and the like. Even for those who own Norton Desktop or some similar enhanced shell, the resource and memory displays, Post-It style notes, command-line utility etc., are invaluable.

RipBAR is one of a number of applications written for the sheer pleasure of programming. It was originally designed on Windows NT, where I missed my Norton Desktop!

If you try RipBAR and like it, the registration cost is U.S. \$34.95 (plus U.S. \$5 Shipping). In return for your registration, I'll provide you with support, I'll keep you notified of new releases and best of all, I'll send you **RipBAR Pro** for free! RipBAR Pro is the "completely loaded" version of RipBAR-- available exclusively for registered users and available for Windows, Windows 95 and Windows NT. For more information on the features and extra software included with RipBAR Pro, see [About RipBAR Pro](#).

Registered users of RipBAR V6.X / RipBAR Pro V1.X or earlier can upgrade to RipBAR Pro V2.0 for U.S. \$14.95 (plus U.S. \$5 Shipping).

We've made it easy to register. You can either use CompuServe's on-line registration service (see instructions below) or you can mail a cheque (in US funds) to the postal address listed below.

Registering On-line

You may register your copy of RipBAR via CompuServe. Simply type GO SWREG at any CompuServe prompt and follow instructions. You may search for RipBAR there by using the word RIPBAR as a keyword.

Registering and feedback via conventional mail

(If you need a copy of RipBAR mailed to you because you don't have access to CompuServe, contact us about the possibility of having RipBAR sent to you via the Internet, or include U.S. \$5 to have it mailed to you via conventional mail.)

Conventional Mail

Jonathan Carroll
28 Parkland
Pointe Claire, Quebec
CANADA H9R 2E8

Support via electronic mail

CompuServe

user id : 74777,2357

E-Mail (Internet)

74777.2357@compuserve.com

CompuServe Support

(The perfect place to ask questions etc.)

SoftDesign Support Forum

GO SOFTDESIGN

New In This Version



NEW
in this version

Please read the following update notices because there is much that is new or changed. Taking the time to read about changes now, will free you from frustration later!

Related Topics:

[RipBAR Pro V2.0](#)

[New In Version 6.14 / Pro Version 1.4](#)

[New In Version 6.13 / Pro Version 1.3](#)

[New In Version 6.12 / Pro Version 1.2](#)

[New In Version 6.11 / Pro Version 1.1](#)

[New In Version 6.1 / Pro Version 1](#)

[New In Version 6.02 \(Windows 3.1 Only\)](#)

[New In Version 6.01 \(Windows NT Only\)](#)

[New In Version 6.0](#)

[New In Version 5.5B](#)

[New In Version 5.5](#)

[New In Version 5.1](#)

[New In Version 5.0](#)

[New In Version 4.2](#)

[New In Version 4.1](#)

[New In Version 4.0](#)

[New In Version 3.0](#)

[New In Version 2.0](#)

[New In Version 1.6](#)

[New In Version 1.5](#)

[New In Version 1.2](#)

RipBAR Pro V2.0

This version includes the following enhancements:

- Group tabs now automatically arrange themselves in multiple rows if there isn't enough room for them in a single row on the bar.
- RipBAR can now "pop out" groups into separate bars -- so that you can see a number of groups open at once. For more information, see [Popout Groups & Changing A Group's View Mode](#).
- Items on separate group popout bars can be configured for display in RipBAR's normal mode (icons) or list mode -- ideal for groups that contain documents and the like. For more information, see [Popout Groups & Changing A Group's View Mode](#).
- RipBAR includes a Preferences settings on a per-group basis so that clicking on a group's tab causes that group to "pop out" into a separate bar. For more information, see [Customizing RipBAR Items](#).
- You can define a customized background for RipBAR -- select the bitmap of your choice. For more information, see [Customizing RipBAR's Background](#).
- Dragging items on the bar has gotten easier: you no longer need to hold down the CTRL key to perform the drag. See [Moving ToolBar Items Between Groups](#) and [Reordering ToolBar Items](#) for more information.
- (Windows 95, NT V4.0) RipBAR includes a new tool called "My Computer" that works much like the Windows 95 one -- use it to browse the various resources (disks, control panel etc.) on your computer.
- (Windows 95, NT V4.0) RipBAR includes a new tool called the Settings Folder -- it will create a group on the bar with all of your Control Panel items in it.
- (Windows 95, NT V4.0) RipBAR includes a new tool called the Printers Folder -- it will create a group on the bar with all of your printers in it.
- (Windows 95, NT V4.0) Double Clicking a drive tool will now open a browse window for the drive specified. (You can still access the Drive Space dialog from the RipBAR menu).
- (Windows, NT) If RipBAR is the Windows shell, you can disable the loading of applications in the Startup group by holding down the SHIFT key while RipBAR loads.
- RipBAR's drawing engine has been improved so that it consumes even fewer resources than previous versions.
- Groups can be hidden so that they don't appear as tabs on the bar. You can still get to them via RipBAR's *Groups* dialog or via the group's shortcut key. This is perfect for groups that are infrequently used. For more information, see [Group & Tab Management](#).
- Group tabs can now be reordered from RipBAR's enhanced *Groups* dialog. For more information, see [Group & Tab Management](#).
- If you have Tuck-Away enabled, and the bar pops onto the screen after you pass the mouse over it, it will automatically hide again if your mouse leaves the bar.
- Right-clicking on a group tab causes a menu to pop up that now includes a list of all groups on the bar. You can disable this option if you like -- see [Customizing RipBAR \(Preferences\)](#) for

more information.

- RipBAR will automatically prompt you for the name of a new group when you add it to the bar.
- (Windows NT) The ability to launch documents from the RUN Tool is functional again. (This feature was non-functional in the last release.)
- (Windows 95, NT) RipBAR now supports the use of environment variables in item paths and in the RUN tool.

New In Version 6.14 / Pro Version 1.4

- *(RipBAR Pro Windows NT version only)* RipTASK For Windows NT is now included in the RipBAR Pro package-- please see the separate RipBAR Pro tools help file for more information.
- *(RipBAR Pro Windows version only)* The Exit Tool's dialog is once again navigable from the keyboard and the type of exit option you choose is saved between sessions.
- *(RipBAR Pro Windows version only)* Items on the bar have a new popup menu option: *Stop Tracking*. See [RipBAR Item Menu Popups](#).

New In Version 6.13 / Pro Version 1.3

- *(RipBAR Pro Windows version only)* The way RipBAR gets launched as the Windows shell has changed. If you are running RipBAR as the Windows shell, please see the release notes (in Write format) provided with your RipBAR package.
- *(RipBAR Pro Windows version only)* Some people experienced problems with system sounds when running RipBAR Pro as the shell. This has been fixed.
- *(RipBAR Pro Windows version only)* Some people experienced problems running certain DOS programs-- and got a "Startup Directory Not Found" message. This problem has been fixed.
- *(RipBAR Windows version only)* If you go to the Icon tab on the customizer dialog for an item on the bar, and that item is a DOS program with no icons, rather than displaying an empty list of icons, RipBAR will load all the icons for Program Manager.
- *(RipBAR Windows version only)* Under certain circumstances, previous versions of RipBAR and RipBAR Pro were not saving their settings prior to exiting Windows-- this has been fixed.

New In Version 6.12 / Pro Version 1.2

- *(RipBAR Pro Windows version only)* RipTASK is now included in the RipBAR package.
- *(RipBAR Windows version only)* Full support for Microsoft Mouse utilities-- V6.11 had problems coexisting with some versions of the Microsoft Mouse software.
- *(RipBAR Windows version only)* There was a bug in RipBAR that caused problems with older applications with monochrome icons-- this has been fixed.
- Multiple document drags - If you drag many documents to an application on the bar from something like File Manager, RipBAR will attempt to launch the application so that all documents open in it. (Previously, only one document was supported.)
- Fixed help file – Some versions of RipBAR V6.11 went out with a faulty help file that occasionally generated "Routine Not Found" messages.

New In Version 6.11 / Pro Version 1.1

- (*RipBAR Pro for Windows only*) When you run a DOS from the bar, RipBAR will ensure that icon you chose for the application will be the one you see when you minimize the console window, or use the Windows Alt-Tab feature to switch between applications. Additionally, the text you type for the title of the application, will be set as the title of the window that your console application runs in.
- Clock text AutoSizing problems have been fixed.
- *Double-Click Creates Group* now works for those using RipBAR in horizontal mode.
- Problems with RipBAR staying *tucked away* (If Tuck-Away was enabled) are fixed.
- RipBAR's means of watching for application hot keys has changed. This means that things like *Move* on the system menu work properly and alternate Task Managers (like Microsoft's Natural Keyboard task manager) should now work properly.
- RipBAR's method for becoming the system shell has changed somewhat. There is now a new utility (RipShell) that takes over launching RipBAR. See [RipBAR As Windows Shell](#) for more information.
- All menus in RipBAR now behave consistently-- i.e. menus appear as you click down on the mouse.
- A problem in Adobe Type Manager used to create problems for RipBAR when it was run as the Windows shell. RipBAR now contains a workaround that solves this problem.
- (*Windows NT only*) When an item is launched in Separate Memory Space, the Clock turns green instead of red.
- (*Windows NT only*) The Run Tool now contains an option to launch the requested item in Separate Memory Space.

New In Version 6.1 / Pro Version 1

- Thanks to a completely new icon drawing engine, RipBAR uses far fewer resources for those who store many things on the bar.
- (*RipBAR Pro*) Preferences includes a new *Track Running Apps* setting that will provide a visual cue for running applications.
- Preferences includes a new *AutoSize Clock Text* setting in the Time & Date section.
- Interface change: tabs are drawn around *all* group tabs, not just the active one.
- You can now copy items between groups in addition to the previous ability to *move* them.
- Improved *Tuck-Away* : If you're bar is set to hide at the bottom of the screen, you'll have no trouble activating it after it has been hidden.
- Improved *Single Left Click* : Dragging items to re-arrange them or move them no longer results in launching the item.
- The *Move* and *Size* menu item on the RipBAR menu now work correctly.
- (*Windows NT*) This version of RipBAR is now designed to run on NT V3.5-- older versions had a problem on the newer version of NT. *Note that this version of RipBAR will **not** run on earlier releases of Windows NT.*
- (*Windows NT & RipBAR PRO*) The customizer dialog for 16 bit Windows applications now include a new option: *Run In Separate Memory Space* which takes advantage of NT's new separate VDM feature.
- (*Windows NT & RipBAR PRO*) You may also conveniently decide to run any 16 bit Windows application in Separate Memory Space at any time by holding down the **Alt** key while launching the item.
- (*Windows NT & RipBAR PRO*) The Application customizer dialog now includes settings to determine the priority you'd like the application set to when you launch it.
- (*Windows NT & RipBAR PRO*) RipBAR now supports being the shell in Windows NT and includes the usual support for a startup group.
- (*Windows NT*) Improved *Performance Tool* : now more compatible with all systems.

New In Version 6.02 (Windows 3.1 Only)

- *(Windows 3.1)* A few users experienced a Windows GPF when RipBAR was in the process of saving settings (after rearranging something on the bar)-- this problem should not appear in V6.02
- *(Windows 3.1)* RipBAR no longer requires CTL3DV2.DLL which will eliminate the problem of other applications installing older versions of this DLL.

New In Version 6.01 (Windows NT Only)

- *(Windows NT)* A problem with RipBAR's icon caching scheme and certain video modes has been fixed.
- *(Windows NT)* The *Disable Icon Caching* option in the General section of Preferences was accidentally disabled in the NT version of RipBAR-- this has been corrected.
- *(Windows NT)* The RipBAR Task Manager which should normally appear in a popup menu, never popped-up. It is now functional again.

New In Version 6.0

- (*Windows NT*) RipBAR loads up to 400% faster because RipBAR now stores all icon images on the bar in a cache file. The file the icons get stored to is titled "RIP_BAR.BCF" and it is stored in the same directory as your Notes files. This feature was implemented in the Windows version of RipBAR in version 5.5.
- (*Windows NT*) The setting that used to be known as the **Notes File Path** is now known as the **Data Path** as this directory path is now used to store both Notes and the icon cache file. You specify this path when you first install RipBAR and it can be changed by going to the *Directories* section of Preferences. (See [Customizing RipBAR \(Preferences\)](#))
- (*Windows NT*) Applications launched from the bar that are console (i.e. non-Windows apps) programs now have the window title set to whatever name you have stored for that item.
- Icons on the bar may now be set to one of three sizes : Normal, Small & Very Small. (See the Sizing Section of [Customizing RipBAR \(Preferences\)](#)).
- Icon / Item popups are gone and have been replaced with Bubble Help.
- For those who display resource and memory information as graphs, Bubble Help provides quick access to this information in more a more detailed numerical view.
- What would a new version of RipBAR be without a new tool? The new Disk Tool may now be installed for individual drives on the bar. They display information about total and free space on the bar. Summary information for all drives is available by double-clicking on a Disk Tool item, or by choosing *Disk Information* from the RipBAR menu.
- For those using RipBAR as a shell, you'll be pleased to know that RipBAR now supports a Startup Group. See the notes in [RipBAR As Windows Shell](#).
- (*Windows 3.1 only*) A number of people experienced problems with RipBAR's caching scheme--resulting in icons that appeared either blank or garbled. RipBAR's cache icon cache procedure has been improved, but as a last resort measure, a *Disable Icon Cache* option has been added to the General section of [Customizing RipBAR \(Preferences\)](#).
- Icons on the bar now push in/out like real buttons. An active button is no longer displayed as a pushed button, but rather has a highlight border around it.
- Preferences sports a new option : Confirm on exit from RipBAR.
- Preferences sports a new option : Auto Return To Top-- RipBAR can be set so that each time you run something on the bar, RipBAR switches the bar back to the top group automatically.
- Drag items between groups by dragging an icon to a Group Tab. See [Copying ToolBar Items To Other Groups](#).
- You may now set the title of a note. The title will display in the Note's title bar and will be visible if you minimize the Note.
- A new Preference option allows you to tell RipBAR to automatically assign the first line of a Note to that Note's title.
- RipBAR has a new "Tuck-Away" feature that keeps RipBAR handy but lessens screen clutter.
- RipBAR's menu can be popped up by right-clicking on the Clock-- previously this displayed

Preferences.

- RipBAR's Tab Dialog have been enhanced. You can now access any tab group in a tab dialog by typing the first letter of the tab group you want to go to. See **Error! Reference source not found.** on page **Error! Bookmark not defined.**

New In Version 5.5B

- On occasion, dragging documents (rather than applications) to the bar resulted in a startup directory that contained "garbage" characters. Fixed.
- (*Windows NT*) One source of incompatibility with the Performance Tool was found : the NWLINK network protocol. The Performance Tool now runs properly with this protocol loaded.

New In Version 5.5

- The ability to import items from Program Manager and to export RipBAR groups to Program Manager, has been added.
- (*Windows 3.1*) RipBAR can now start up in less than half the time of previous versions because it caches the icons on the bar in a new file-- **RIP_BAR.ICF** in the WINDOWS directory. (This feature is discussed in the *Troubleshooting*, and *Installation* sections of this help file.
- This help file now includes a Troubleshooting section.
- The RipBAR Task Manager (normally available by right-clicking on the Memory Tool or by pressing Alt-T) is now also available by right-clicking on the Resource Tool.
- (*Windows NT*) RipBAR's Performance Tool may run into incompatibility problems that previously led to a crash. RipBAR can now detect the problem, and warns the user. For more information, see [Performance Tool Problems](#).
- Help is now available by pressing F1 anywhere in RipBAR. Many dialogs now include a context-sensitive Help button.
- The behavior of the *Single Left Click Activates* option has changed. (Apps are launched when the mouse button is released rather than when it's first pressed down.)
- When you create a new Note or otherwise switch to a Notes window, the cursor is automatically activated in the edit window.
- Under certain circumstances (such as when RipBAR was placed at the bottom of the screen) activating Single-Left-Click could lead to launching an application *twice* if clicked on. This had to do with the placement of popup menus and has been fixed.
- AutoSize feature has been totally revamped. Horizontal AutoSize (for those who keep RipBAR in horizontal position) is now fully functional.
- (*Windows NT*) Under certain circumstances the graphical/numerical state of the Performance Tool was not saved from session to session. Fixed.

New In Version 5.1

- A sizing / re-sizing problem was fixed.
- Memory graph display is improved and easier to read.
- Group icons may be set to hide themselves-- great if you have the Group Tabs enabled.
- Double Clicking on the bar to create a new group is now an option that you must enable in the Preferences dialog. The default behavior is that a double-click does *not* create a group.
- Right-clicking on a group tab will bring up the popup menu or customizer dialog for that group.
- The "Main" or top group may now be renamed via the *Titles and Tabs* section in Preferences.
- Right-clicking on the bar (somewhere other than an item icon, a group tab or the title bar) will pop up the RipBAR menu-- you don't have to click the System Menu.
- Users with monochrome screens will appreciate the improvement in RipBAR when it is started with the /mono option : memory and resource graphs are black on white. (Thanks Michael for reminding me a million times! Better late than never huh?...)

New In Version 5.0

- Folder Tabs on the bar display group titles. You can toggle this feature on and off from Preferences. (Groups may be configured individually to *not* appear in the tabs.)
- Dialogs like Preferences and ToolBar Item Info sport the new Folder Tab interface-- allowing a lot of settings to fit nicely into one place.
- Windows NT users get a new tool -- the Performance Tool. This tool will display either CPU usage or "CPU Throttle".
- Windows NT users : the Exit Tool now offers choices to *Shut Down* or *Logoff*.
- Windows NT users can now specify their Notes directory anytime by choosing the *Directories* option in Preferences..
- RipBAR may now be set to automatically size the bar to adjust for the number of items in a group. If you set this option on in Preferences, drag new items to RipBAR's title bar.
- Items on the bar may be set to display in all groups-- so you might have something important like a text editor appear in all groups.
- Items may be set to always prompt for a command line, or parameters before being launched..
- At long last : there is no limit to the number of icons RipBAR can read from a file. You can now browse for an icon much more easily-- the icon browser has been improved quite dramatically.
- The RUN Tool now contains a BROWSE button to go looking for the file you want to run.
- The RUN Tool may now be used to "run" documents. See the RUN Tool section for more information.
- Memory Warnings previously worked only if the Memory Tool was set up to display in graphical form-- this has been fixed.
- Under rare circumstances, RipBAR reported errors switching to a particular directory-- this has been fixed.
- A number of people requested that the Escape key would back out of a group--just like the PageUp key did. This has been implemented.

New In Version 4.2

- In addition to applications, documents may now be stored on the bar. Launching a document automatically launches the application that document belongs to.
- A new tool is now added to RipBAR's growing arsenal-- the Print Tool.
- Icon Titles may now be longer -- about 40 characters in length.
- Support for long directory names and directory names with embedded spaces in Windows NT.



Please see the notes concerning this feature in [RUN Tool](#).

- An ASCII chart is available from the RipBAR [system menu](#). Double clicking on a character in this chart, copies it to the clipboard for use in other applications.
- RipBAR's consumption of memory is more modest than that of previous versions-- following a trend set last version.
- Under certain circumstances, RipBAR didn't always delete all of a group's contents when that group was deleted-- this is fixed.
- RipBAR no longer forces file and directory names in an icon's Properties dialog to upper case.

New In Version 4.1

- New Task Manager Tool. Right-click on the memory display to access a list of all open windows.
- Popup menus are available for all ToolBar items that allow for more customization and access to features.
- ToolBar items may now be added manually by typing path name etc. without having to drag files from the File Manager.
- RipBAR may now be configured to display the name of applications as you click on them.
- Whether RipBAR's title bar appears half-height or full-height is now an option.
- ToolBar items may now be moved between groups conveniently.
- Limited support for monochrome screens.
- The Preferences Dialog is now available with a *single* right-click on the Clock Tool.
- The RipBAR System Menu is more convenient to access for people who use a keyboard rather than the mouse.
- There was a problem when the startup path of an application was the root directory of a drive -- fixed.
- Icons for the RUN and Exit tools may now be changed.
- Some difficulties RipBAR had when trying to read the WIN.INI file (for people using RipBAR as the Windows shell) under certain circumstances have been corrected.
- RipBAR makes better use of memory-- freeing up more for the other applications you run.

New In Version 4.0

- RipBAR now supports *groups*. You can now install groups as well as applications on the bar. Groups hold applications or other groups.
- RipBAR now supports keyboard navigation. Navigation of the bar, application setup, application launching and other operations now have keyboard equivalents.
- New tool : The *Exit* tool. Double clicking on this, permits the user to either quit or restart Windows-- can be installed on the ToolBar.
- New tool : The *Notes* tool. Double clicking on this, displays a new "Notes" window-- a little editor permitting the user to type and edit notes. Notes Tool includes the ability to choose fonts, auto-arrange Notes Windows and, File Open and Save operations.
- New RipBAR Activation HotKey. User can now select a HotKey combination that can be used anywhere in Windows to activate RipBAR.
- New Application Hot keys. User can now select a key that will activate a particular application.
- RipBAR supports Sound!. Use Preferences to assign customized sound (requires sound card or Windows IBM PC Speaker Driver) to various types of events.
- RipBAR icons now operate like real buttons-- displaying the active or inactive state of each icon.
- New customization option for each application installed on the ToolBar allow for initial display state to either be normal, maximized or minimized.
- A single right mouse button click on an icon on the bar will now display information for the icon-- this used to require a *double* click on the right mouse button.
- (Windows 3.1 *only*) If RipBAR is the windows shell (instead of Program Manager), it will run and load whatever applications are on the RUN= and LOAD= lines in your WIN.INI file.
- If you occasionally switch video modes in Windows, you'll appreciate that RipBAR always ensures that it doesn't display itself off the screen. (i.e. if you switch from 1024 X 768 to 640 X 480)
- (Windows NT *only*) System Information dialog shows more information. The two memory tools have been consolidated into one, which may be displayed as a gauge.

New In Version 3.0

- RipBAR has a new tool : The *RUN* tool. Double clicking on this, permits the user to type an application name on a command line along with any command line options and run the application.
- RipBAR includes new options to display both memory and resource statistics as graphs.
- (Windows 3.1 *only*) RipBAR now includes support for those who want it to run as a shell-- instead of Program Manager.
- RipBAR can now load icons from .ICO files, Norton .NIL icon library files and PC Tools For Windows icon files.
- RipBAR now sports a new *Customized Minimize* option that permits the user to determine *how* RipBAR gets minimized and *where* it gets minimized to.
- RipBAR now allows the user to customize the fonts that RipBAR uses for display purposes.
- RipBAR 's System Info dialog now includes an option to exit or restart Windows.
- RipBAR occasionally neglected to save settings when a user exited Windows-- this is fixed.

New In Version 2.0

- RipBAR may now be resized horizontally and vertically, allowing you to place icons in columns.
- RipBAR items may be reordered according to user's taste.
- *Preferences* now include a new option that lets you tell RipBAR to either show or hide icon titles.
- *Preferences* now include a new option that lets you set the date format displayed in the Clock/Date pane.
- *Preferences* now include a new option that lets you determine alternate means of activating applications.
- *Preferences* now include a new option that lets you determine whether RipBAR displays some, all, or none of its tools (memory, clock etc.).
- *Preferences* now include a new option that lets you format the time display for either 24hr or 12hr display.

New In Version 1.6

- When running under Windows NT, RipBAR now saves and loads its setting from the Registry rather than an .INI file.
- When running under Windows NT, RipBAR will now read .ICO files in addition to the .EXE and .DLL files already supported when browsing icons for an application.
- Minor display problem that occurred when adding an application to the bar that didn't have an icon is fixed.

New In Version 1.5

- RipBAR now includes *preference* or option settings that allow you to determine whether RipBAR stays on top of all other windows, and whether RipBAR minimizes itself when you run an application from it.
- RipBAR now reports memory statistics in a more reliable fashion -- it will no longer be fooled by virtual memory.
- RipBAR no longer has a *minimize* button.
- RipBAR is able to load up to 120 icons from icon files (EXEs & DLLs) -- up from 40 in previous versions.

New In Version 1.2

- RipBAR now makes use of threaded processes under Windows NT. If you're using RipBAR under Windows NT, executing an application will no longer make RipBAR "busy". In other words, you'll be able to launch many applications from the bar in quick succession.
- RipBAR now sports a minimize box so that you can quickly and conveniently get it "out of the way".
- Double clicking on the memory display will now cause a dialog to appear with more system information.
- The *Resource Tracker* is now available by double-clicking on the Resource Display pane.

Getting Help



The first time you use RipBAR, a Help icon is installed. (The one with the yellow question mark.) If you remove this icon, you can display help at any time by double-clicking with the *left* mouse button on the clock pane, or by typing F1 anywhere in RipBAR.

Monochrome Support

RipBAR provides limited support for monochrome screens. Sometimes it can be hard to make out text and pictures against a gray background on monochrome screens. RipBAR can optionally set the background colour of the ToolBar to white instead of gray.

To activate this monochrome support, you must start RipBAR and pass it **/mono** as an argument. If you set up RipBAR in Program Manager or some other Desktop shell, a typical command line might look like

C:\RIPBAR\RIPBAR16.EXE /mono

If RipBAR is to be your Windows shell, edit the SYSTEM.INI file so that the SHELL= line so that the **/mono** option appears there-- likewise the LOAD or RUN lines in your WIN.INI file if that is where RipBAR is being started from.

Tips, Tricks & Things

Even if you never read manuals, read this!

RipBAR offers a vast array of features and customization possibilities. You should really take the time to peruse the entire Help guide, but if nothing else, read this section to get an overview of things you should know about. Also, be sure to go through the many options in RipBAR's Preferences dialog.

If you have trouble working with RipBAR, see the Troubleshooting section of this help guide.

RipBAR HotKey

One of the first things you might want to do is set up your preferred activation hot key for RipBAR-- this let's you use a key sequence to bring RipBAR to the front of your screen. (This assumes RipBAR is actually running) That way, you don't need to always have RipBAR on top of other windows-- a plus for people with smaller screens. See [HotKey](#).

Group Tabs

By default RipBAR displays tabs for Groups on the bar in a column down the left side of the bar. Should you want the bar to extend horizontally across the screen, you can re-position the Tabs to also be horizontal-- from the *Titles & Tabs* section of Preferences. Also, tabs can be rearranged or hidden -- for more information, see [Group & Tab Management](#).

Drive Tools

In addition to application & document icons, you can place *Drive Tool* icons on the bar-- icons that display information about the free space on a particular disk on your system. Create Drive Tools from the *Show Tools* section of Preferences.

Bringing Stuff Over From Program Manager

If your Program Manager is already set up with items or groups of items that you frequently use, use RipBAR's *Import* feature (see [Importing Items From Program Manager](#)) to quickly bring these items over to RipBAR.

Icon Sizing

Depending on the size and resolution of your screen, you may want to take advantage of RipBAR's ability to display icons in one of three sizes on the bar. See the *Sizing* section of [Customizing RipBAR \(Preferences\)](#) for information on how to do this.

Application HotKeys

As you add applications to the bar, remember that you can add an application hot key sequence for them too-- this goes for any icon tool on the bar. You can get one-key access to things like the RUN Tool for quick access to apps not installed on the bar. (The Notes Tool is the one exception-- the hot key is CONTROL -N and can't be modified.) You can also assign hot keys to group icons. (See [RipBAR Item Menu Popups](#)) You'll be pleased to note that the application key works whether the icon is visible or not-- i.e. you can be in any group and quickly access an application from another group.

Choose your own RipBAR background!

You can select your own background for the bar -- for more information, see [Customizing RipBAR's Background](#).

Set groups up so that they appear in their own separate Popout bar!

RipBAR Groups can be set to appear in their own bar and items in these groups can be configured to appear as icons or as a list -- for more information, see [Popout Groups & Changing A Group's View](#)

Mode.

And Other Great Stuff...

Remember, there is a lot that may be configured-- so go ahead and set your default Notes font, whether memory and resource tools display in numerical or graphical form, and the shape and size of RipBAR's bar.

If you don't have a mouse, be sure to see Keyboard Usage.

Does RipBAR look a little boring when it's minimized? Turn on the Customized Minimize setting in Preferences. General) You can determine where RipBAR will minimize to and what gets displayed when it's minimized. (*Note, this feature not supported in Windows 95 and Windows NT V4.0*)

Go ahead and fool with RipBAR-- but be sure to come back and read the rest of the documentation-- there's a lot here in a small package!

Jonathan

Installation

By now, you probably have RipBAR installed. This section is provided as a reference should you ever want to un-install RipBAR or otherwise need to know what files RipBAR needs on your system. The setup details for Windows 3.1 and Windows NT / Windows 95 are provided separately.

Related Topics:

[Windows 3.1](#)

[Windows NT 3.5 / Windows 95](#)

Windows 3.1

The following files should be installed in a separate directory, perhaps something called "RIPBAR" or the like.

RIPBAR16.EXE The main application file.

RIP_BAR.HLP The on-line help facility.

The following file should reside in \WINDOWS\SYSTEM. It is essential to the proper running of RipBAR.

RIPKHOOK.DLL HotKey library.

Finally, RipBAR creates and maintains the following files in your \WINDOWS directory.

RIP_BAR.INI RipBAR settings file.

RIP_BAR.NOT RipBAR Notes file.

Windows NT 3.5 / Windows 95

The following files should be installed in a separate directory, perhaps something called "RIPBAR" or the like.

RIPBARNT.EXE	The main application file.
RIP_BAR.HLP	The on-line help facility.
RIPBAR.TPS	The Tips-Of-The-Day file.
RSHELLNT.EXE	(Windows NT only) The shell file.

The RipBAR settings are stored in the System Registry database under SOFTWARE\RIP APPLICATIONS\RIPBAR. Use REGEDIT to view or remove these settings.

Finally, RipBAR creates and maintains a file called RIP_BAR.NOT in whatever directory you specified when you first installed RipBAR. You can change the location where the Notes file is stored from Preferences in the **Directories** section.

About RipBAR Pro

RipBAR Pro is the most advanced version of RipBAR available. Think of it as the "loaded" version of RipBAR. RipBAR Pro is available exclusively to registered users as our way to say "thank you" for your support and it includes advanced features that offer a higher degree of flexibility than the standard RipBAR V7.X

RipBAR Pro includes these features that aren't available in the shareware version:

- Support for an unlimited number of groups on the bar-- the regular version of RipBAR supports a maximum of three groups.
- A *Track Running Applications* feature. For more information, see [Customizing RipBAR \(Preferences\)](#).
- DOS applications are displayed with the icon used on the bar when they are minimized in Windows 3.1.
- The ability to replace Program Manager as the Windows shell. (Windows NT & Windows 3.1 only)
- Support for a "startup group" and to load items on the LOAD and RUN lines of Windows' WIN.INI.
- The ability to launch applications in Separate Memory Space in Windows NT V3.5.
- The ability to set the priority of applications at launch time in Windows 95 and Windows NT.
- Support for customized backgrounds on the bar.

RipBAR Pro also includes the following extra software:

RipTASK is included with Windows 3.1 version of RipBAR Pro. It is a replacement Task Manager with the usual task switching features as well as support for shutting down "rogue" applications that won't let you exit in the usual fashion, a command line interface for launching applications on the fly, and a system information screen.

RipBAR Administrator is included with Windows NT and Windows 95 versions of RipBAR Pro for easy backing and restoring of RipBAR settings.



RipBAR and RipBAR Pro share the same documentation (this help file). Where a particular feature is applicable to only RipBAR Pro, you'll see the above icon.

Adding Items To The Bar

There are two ways to add items to the bar. The first involves dragging items to the bar and the second involves specifying the file name and path manually. Both are discussed separately below.

The Dragging Method

You can add applications or documents to the bar by dragging files to the bar from the File Manager or other programs that allow you to perform drag operations. (Such as Norton Desktop) Simply drag an application file on top of an empty space on the bar (or RipBAR's title bar if there is no empty space on the bar), and let go. The new application or document will appear. If there is no icon associated with the application (because perhaps it is a DOS app), RipBAR will place a generic Windows icon which you can customize-- see Customizing RipBAR Items for more information.

In Windows 95 and Windows NT with the Win95 shell, you can drag program groups from Explorer to the bar. RipBAR will create the corresponding groups and fill them with the appropriate application and document items.

It is possible that you won't see the new icon or application if there wasn't extra room on the bar before you added the new application-- Just re-size the bar so that you can see what you just added. (See Changing The Way RipBAR Looks if you don't know how to re-size RipBAR.)

The Manual Method

Choose **Add New Application** from RipBAR's Menu. (If you don't know how to get RipBAR's menu, see The RipBAR Menu.) or type the **INS** key. RipBAR will display a dialog allowing you to fill various pieces of information-- see Customizing RipBAR Items for more information.

For documents, the command line field should contain the path of the document name and the application field should contain the name of the application you want to use to launch the document.

Adding And Managing Groups

RipBAR supports *Groups* on the toolbar. Groups are a collection of applications and possibly other Groups. Use Groups if you are running out of room on the bar, or want to collect similar applications in one area.

Adding A Group On The Bar

To add a new Group on the bar, simply choose *Add New Group* from RipBAR's Menu. (If you don't know how to get RipBAR's menu, see [The RipBAR Menu](#).) or type **CTRL+INS**. (Or you can double-click on an empty portion of the bar if you have this option set in Preferences.) An icon will appear with a default "Group picture". Double-clicking on this Group icon will display all applications in that Group, on the bar. (If you're creating a Group, the bar will initially be empty.) You can add applications to the Group as you normally would.

Note that the regular version of RipBAR supports only four groups. RipBAR Pro supports an unlimited number of groups-- for more information on RipBAR Pro, see [About RipBAR Pro](#).

Navigating Between Groups

After moving to a particular Group, you may move back by single-clicking with the right mouse button, on RipBAR's title bar. For very fast navigation, give each group an Application HotKey ([Customizing RipBAR Items](#)). Using hot keys for groups will move you around faster than an OS/2 screen redraw.

As well, if you have the Group Tabs turned on, you may simply click on a Group Tab to move to that group. To turn Group Tabs on, see [Customizing RipBAR \(Preferences\)](#).

Displaying Groups On Their Own Bar

To pop out a group into its own bar, hold down the CTRL key while clicking on a group tab or right-click on a group tab and select *Popout* from the group menu. If you'd like for a group to always appear in a separate Popout bar, set the *Popup Group ToolBar When Active* from the item customizer dialog -- see [Customizing RipBAR Items](#) for more information.

Modifying A Group Name

To change the name of a group, right click on the Group Icon and select *Properties*. Or, if you have Group Tabs enabled, simply right-click on the Group Tab you want to modify.

Deleting Groups

Delete Groups as you would any other icon on the bar-- .i.e. right-click on a Group icon, and choose Delete. Or, if you have Group Tabs enabled, you can right-click on a Group Tab and choose Delete.

Hiding Group Icons

If you have Group Tabs enabled, then you don't need to see the icons for Groups on the bar. From Preferences, go to the *General* section and select the *Hide Group Icons* option.

Hiding Individual Group Tabs

If you have Group Tabs enabled, you can hide individual tabs by choosing *Groups* from the RipBAR menu. A dialog will come up that will allow you to select a group and hide or show it. For more information, see [Group & Tab Management](#).

Changing The Order Of Group Tabs

You can rearrange the order of the tabs on the bar -- for more information, see [Group & Tab Management](#).

Making Groups Appear In Their Own Popout Bar

Groups may be configured to appear in their own bars -- for more information, see [Popout Groups & Changing A Group's View Mode](#).

Reordering ToolBar Items

You can change the position of items on the bar by dragging the icon representing the application, document or group you want to move, to a new location on the bar-- i.e. drop it on top of the icon in the location you want to move the application to.

- ▽ To perform the drag, click and hold the left mouse button down on the item you want to move and drag to the new location on the bar.

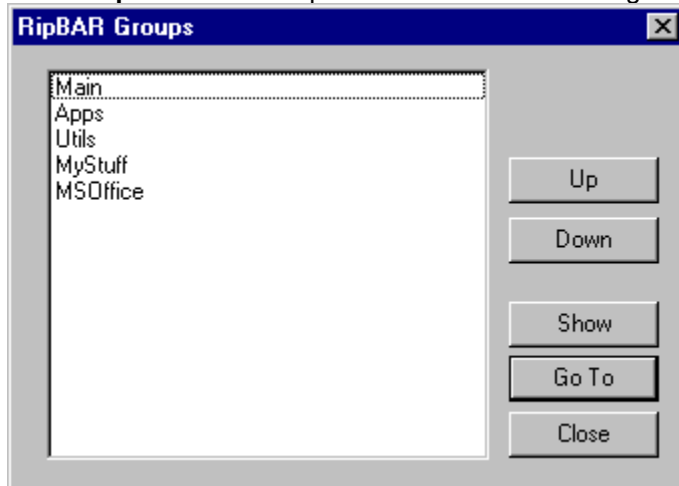
This way, you can organize icons such that your most-used applications are on top and others below etc. If you want to move the item to a new group rather than just change its position on the bar, see [Copying ToolBar Items To Other Groups](#).

Reordering ToolBar Groups & Tabs

For information on how to reorder Groups & Tabs, see the section titled Group & Tab Management.

Group & Tab Management

Some of the customization that can be done with respect to Groups on Tabs in RipBAR are accessed via the **Groups** item in the RipBAR menu. The following dialog will appear:



Reordering Tabs On The ToolBar

Highlight the group you'd like to change the position of, and use either the **Up** or **Down** buttons... click them until the group is in the position you like. As you do this, you'll see the tabs on the bar reorder themselves.

Hiding & Showing Groups

There may be some groups (or tabs) that you don't access very often. You can set certain tabs so that they don't display on the bar -- though you'll still be able to access them from the **Groups** dialog. To hide a group, simply highlight the group you want, and click on **Hide** --the group will be hidden, and the Hide button will display **Show** so that if you click it again, the group will once again appear on the bar.

To Go To A Particular Group

While you can simply click on a Group Tab on the bar to go to a group, if you are using the keyboard or the group you want to go to is hidden, you can use the **Groups** command from the RipBAR menu. Highlight the group you want to access and then click **Go To**.

Moving ToolBar Items Between Groups

Applications and Groups may be moved to other locations on the bar. You might for instance add a group after having installed a number of things on the bar. You then realize that you'd like to move existing items and/or groups to that new group.

If you have Group Tabs enabled

Simply drag the item you want to move, to the Group Tab you want to move the item to.

- ▽ To perform the drag, click and hold the left mouse button down on the item you want to copy and move the mouse so that it's on top of the group tab you want to copy to. Then let go of the key and the mouse button.

If you don't have Group Tabs enabled

Simply activate the item you want to move, and choose **Move Item** from RipBAR's menu, from the item's menu Popup, or type **Control-M**. A dialog will appear asking you what group you want to move the item to. The "top" of the bar is known as the **Main Group**-- the other groups appear according to whatever icon title you assigned them. (If many groups show up as "Group", it's because you never changed their icon title. See [Customizing RipBAR Items](#) to learn how to change the title.)

If you want to copy the item to a new group, see [Copying ToolBar Items To Other Groups](#).

If you want to just change the position of an item rather than move it to a new group, see [Reordering ToolBar Items](#).

Copying ToolBar Items To Other Groups

Applications and Groups may be copied to other locations on the bar.

If you have Group Tabs enabled

Simply drag the item you want to move, to the Group Tab you want to copy the item to.

- ▽ To perform the drag, hold down the SHIFT key and click and hold the left mouse button down on the item you want to copy and move the mouse so that it's on top of the group tab you want to copy to. Then let go of the SHIFT key and the mouse button.

If you don't have Group Tabs enabled

Simply activate the item you want to move, and choose **Copy Item** from RipBAR's menu, from the item's menu Popup, or type **Control-C**. A dialog will appear asking you what group you want to copy the item to. The "top" of the bar is known as the **Main Group**-- the other groups appear according to whatever icon title you assigned them. (If many groups show up as "Group", it's because you never changed their icon title. See [Customizing RipBAR Items](#) to learn how to change the title.)

Launching Applications

To run or launch an application on the bar, simply double click on it with the left mouse button. (Or use the ENTER key) You can eliminate the need to double-click and start applications with a single-click instead by choosing this option in Preferences. (See [Customizing RipBAR \(Preferences\)](#))

Optionally, you can run the application so that it starts in the minimized state, by holding down the SHIFT key while double-clicking the mouse. To set up an icon so that the application always runs minimized, see [Customizing RipBAR Items](#).

To start the application on the bar so that it automatically opens a document, see [Launching Applications With A Document](#). You can set up an item to always open a particular document or perform a particular action by supplying a *Command Line* -- see [Customizing RipBAR Items](#).

RipBAR's clock pane will turn red to let you know it has begun launching the application.



If you are running Windows and the application you are running is a DOS program, then RipBAR will display the icon that you chose for the item on the bar whenever you minimize the application.



If you are running Windows NT and the application you are launching is a 16 bit Windows application, you can choose to run it in Separate Memory Space-- a feature provided by Windows NT and used by RipBAR. When you run 16 bit Windows applications in separate memory space, they enjoy full crash protection (i.e. if the crash, they affect no other running Windows programs) and they are preemptively multi-tasked vis-a-vis other running Windows applications. You can set an application to always start in Separate Memory Space by setting this option in the customizing dialog for the item. (See [Customizing RipBAR Items](#)) Alternatively, you can choose to occasionally run an application in separate memory space by holding down the **Alt** key as you perform the launch.



If you are running the Windows NT 3.5 version of RipBAR, you can hold down the **Alt** key while double-clicking on a toolbar item to launch it in Separate Memory space.

Launching Applications With A Document

To execute or launch an application with a document, simply drag a document from the File Manager, a *drop* it onto one of the application icons. The application will launch and open the document you dragged to the bar-- if the application supports this kind of operation.

You can set up an item to always open a particular document or perform a particular action by supplying a *Command Line* -- see [Customizing RipBAR Items](#).

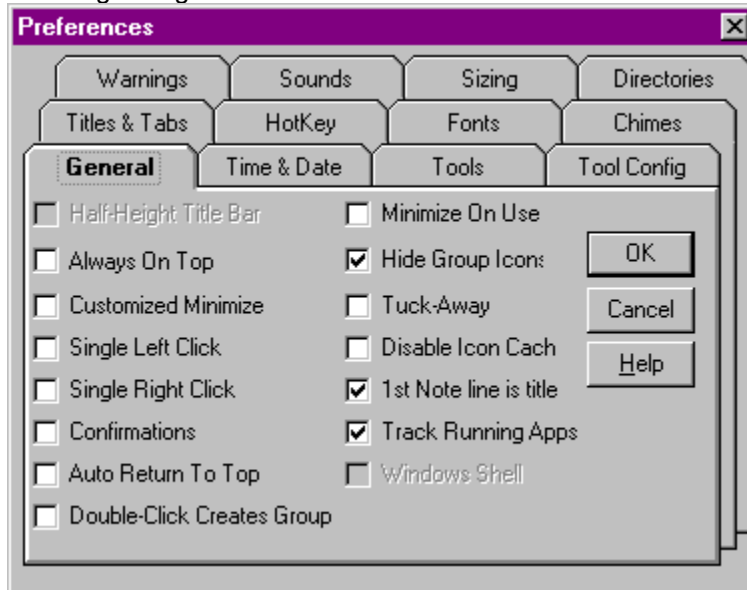
Launching Applications With The RUN Tool

When you want to run an application that isn't installed on the bar, you can use the RUN Tool. For more

information, see  RUN Tool.

Customizing RipBAR (Preferences)

Choosing *Preferences* from RipBAR's menu or clicking on the Preferences Tool on the bar, brings up the following dialog :



Options in Preferences are arranged in folders and are grouped logically according to function. Titles for these various groups appear in folder tabs. To activate a group of options (and bring that group to the front), simply click on the appropriate tab, or type CTRL-TAB to cycle through the folders. Help on the various settings is presented in groups as they appear in the dialog.

Related Topics:

[General](#)

[Tools](#)

[Tool Configuration](#)

[Titles & Tabs](#)

[Fonts](#)

[HotKey](#)

[Sounds](#)

[Chimes](#)

[Warnings](#)

[Time & Date](#)

[Sizing](#)

[Directories](#)

General

Always On Top(default is Yes)

When selected, this option causes RipBAR to always remain on top of any other windows on the screen.

Half-Height Title Bar (default is Yes) (Windows 31, Windows 3.5 only)

When selected, this option causes RipBAR's title bar to be half the height of the standard Windows title bar height. It also means that RipBAR uses its own customized version of the System Menu. See The RipBAR Menu for more information on this feature.

Minimize On Use (default is No)

When selected, this option causes RipBAR to minimize itself when you launch an application off of the bar.

Single Left Click Activates App (default is No)

When selected, you can run an application from the bar by clicking *once with the left mouse button*. (Normally you must *double click* the left mouse button)

Single Right Click Activates App (default is No)

When selected, you can run an application from the bar by clicking *once with the right mouse button*. (Normally you must *double click* the left mouse button) Note that if you do this, you will have to press the **CONTROL** key and click on the right mouse button to display the Properties dialog for the item.

Customized Minimize (default is No) (Windows 31, Windows 3.5 only)

Normally, when you minimize an application, the window turns into an icon and goes to the bottom of the screen. You can tell RipBAR to handle this default behavior differently-- by turning this option on, you are able to determine how small RipBAR shrinks, and what location the bar moves to when you minimize it. For more details, see Minimizing RipBAR.

Double Click Creates Group (default is No)

With this option enabled, double-clicking on an empty portion of the bar will create a new group-- normally you select *Add New Group* from the menu to do this.

Hide Group Icons (default is No)

With this option enabled, group icons will not be visible on the bar. To navigate between groups, use Group Tabs or the **Move To** option from the menu.

Confirm On Exit (default is Yes)

With this option enabled, RipBAR will ask you to confirm your choice to exit after you've chosen *Close* from RipBAR's menu.

Tuck-Away (default is No)

RipBAR can be set to "hide itself" every time you switch away to another window. With this option enabled, RipBAR will move itself almost completely off the screen-- past whatever edge of the screen it is closest to. Afterwards, whenever you pass your mouse over the edge of the bar, RipBAR will pop back into view again. Note that with this option enabled, it can become difficult to drag items to the bar.

Disable Icon Cache (default is No)

RipBAR can load and start up far more quickly when it is able to store all icon images on the bar to a cache file. (Stored as RIP_BAR.ICF) in your Windows' directory. Normally, you will **not** want to enable this option. However, if you experience trouble with garbled icon images or the like, use this option as a last resort.

1st Note Line Is Title (default is No)

With this option set, RipBAR automatically takes the first line of a Note, and makes it the title of that Note.



For more information, see [Notes Tool](#).

Auto Return To Top (default is No)

With this option set, RipBAR automatically switches the bar back to the top group after you launch a document or application.

List Groups In Popups (default is No)

With this option set, RipBAR will list all groups on the bar when you right-click on a group tab-- select a group to switch to it quickly.



Track Running Apps (default is No)

With this option set, RipBAR will display applications on the bar that you have launched from the bar (and are still running) with their corner "turned up". When you exit the application, the icon on the bar will return to its normal picture.

If you are running Windows and have *Track Running Apps* enabled, then whenever you double-click on an item that is already running, RipBAR will bring the application to the front of the screen rather than launch a new copy of it.



Windows Shell (default is No) (Windows 31, Windows NT 3.5 only)

When selected, this option causes RipBAR to configure itself as the primary Windows shell-- the replacement for Program Manager. See [RipBAR As Windows Shell](#) for special notes about this feature.

Tools

Check marks next to items indicate that RipBAR will display the tool. Uncheck any items you *don't* want displayed.

In addition, there are a number of buttons at the bottom of the dialog.


- *Drive Tool*
When pressed will add new Drive Tool items to the bar into whatever Group is currently displayed on the bar.
- *Control Panel Group (NT V4.0, Windows 95)*
When pressed will add a new group on the bar that will contain one icon for each Control Panel item.
- *Printers Group (NT V4.0, Windows 95)*
When pressed will add a new group on the bar that will contain one icon for each printer configured on your system.


Some tools are available only in a particular operating system-- i.e. the Resource Tool is available only in Windows and the Performance Tool is available only in Windows NT.

For more information about what the various tools do, see the applicable section in this help file. All tools are described separately -- see **Tools** in the Table Of Contents.

Tool Configuration

These options let you choose whether Memory and Resource displays will be in numerical or graphical

format. For more information, see  Memory Tool and

 Resource Tool.

Titles & Tabs

Check marks next to items indicate that RipBAR will display the tool. Uncheck any items you *don't* want displayed. If you uncheck the Clock tool, you can still invoke Setups

Show Item Names (default is *In Popups*)

This option can be selected via listbox-- there are four values : None, in Bubbles, Under Icons and both in Bubbles and under icons.

If you choose *In Bubbles*, you'll see the title of an icon appear in a yellow bubble as you move a mouse over an icon on the bar.

If you choose under icons, the icon's title will be printed right below the icon.

Show Group Tabs (default is *Left*)

This option selects whether group names will be visible on the bar in folder tabs. These tabs may be set to appear on the left or top of the bar.

Main Group Name (default is *"Main"*)

This option determines the name of the top-level group-- it shows up as first in the list of Folder Tabs. Change this to whatever you like.

Fonts

This brings up a dialog allowing you to set various types of RipBAR fonts. *Large Tool Font* is the font that RipBAR uses to display the time in the Clock pane. *Small Tool Font* is the font that RipBAR uses to display the date, memory stats in the Memory Tool, and Resources stats in the Resource Tool. *Icon Titles Font* is the font that RipBAR uses to display the icon titles if you have this option set (see above). Finally, *Notes Font* allows you to set the default Notes font. Finally, *Tab Font* is the font used to display group names in tabs on the bar.

Note: If you want to set a specific font size for either of the Clock fonts (Large Tool Font and Small Tool Font, you should disable the AutoSize Clock text feature in the Time & Date tab of Preferences)

HotKey

RipBAR lets you select a key combination that will activate RipBAR, and bring it on top of all other windows on your screen. Click the **HotKey** button and you'll be prompted to type the HotKey you want to use. After you click the **Install** button, the HotKey is enabled. Either the **Control** or **Alt** key must be used as part of the HotKey sequence.

Because RipBAR is so easy to activate, you don't have to have the *Always On Top* option set if your screen is often cluttered.

Sounds

See the section titled [Sound Support](#) for more information.

Chimes

Choose where a Chime plays every hour, half hour, or quarter hour. To disable the Chime entirely, go to the *Sounds* option and clear the file name for *Chime*.

Warnings

Choose levels for memory and resources below which, a warning sounds. To disable the Warning sound entirely, go to the *Sounds* option and clear the file name for *Warnings* or set the levels to 0.

Time & Date

RipBAR lets you select from one of three different date formats to be displayed on the Clock/Date pane and whether time is displayed in 12 hour or 24 hour format.

RipBAR will also allow you to choose the *Auto-Size Clock Text* feature so that as you change the size of the icons on the bar (normal, small & very small), the text in the clock is always displayed in the largest possible font that will fit.

Sizing

Two types of sizing options are available-- Bar Sizing and Icon Sizing. Both are explained below:

Bar Sizing

RipBAR can be set to resize the bar automatically as you switch between groups-- so that the bar is only big enough to fit the items in a particular group.

Please note that RipBAR has a big enough variety of options (AutoSize, Group Tabs etc.) that you'll have to see what combination of settings works for you.

Three AutoSize options are available-- No AutoSize, Vertical AutoSize, and Horizontal AutoSize. The three are explained below :

No AutoSize

RipBAR will not automatically resize the bar as you switch between groups. This means that if a group has more items in it than can currently fit on the bar, some items will be hidden and you'll have to size the bar yourself to see them.

Vertical AutoSize

RipBAR will resize the bar automatically as you switch between groups. It is called Vertical AutoSize because RipBAR will adjust the bar size by lowering or raising the bottom of the bar to make sure all group items fit on the screen. Two items to note :

- In groups with many items, RipBAR may be forced to extend the bottom of the bar past the bottom of your screen.
- In groups with few items, RipBAR may raise the bottom of the bar enough so that not all Group Tabs (if you have Group Tabs enabled) may be visible.

Horizontal AutoSize

RipBAR will resize the bar automatically as you switch between groups. It is called Horizontal AutoSize because RipBAR will adjust the bar size by adjust the right hand side of the bar (moving it right or left) to make sure all group items fit on the screen. Two items to note :

- In groups with many items, RipBAR may be forced to extend the right hand side of the bar beyond the right hand side of your screen.
- In groups with few items, RipBAR may shrink the width of the bar enough so that not all Group Tabs (if you have Group Tabs enabled) may be visible.

Icon Sizing

Depending on the size of your display and its resolution, you may want to instruct RipBAR to scale the icons that get displayed on the bar. Three sizes are available-- *Normal*, *Small*, and *Very Small*.

Note that when you change the icon size, the bar itself changes size too. This means that text in the clock or other tools may no longer fit or look right and so you should go to the *Fonts* section of Preferences and adjust the font size accordingly. Display gauges for resources, memory, Drive Tools etc., scale properly as you switch icon sizes.

Directories

Windows NT only. In this section, you may specify the directory where Notes and the RipBAR icon cache file are stored. You set this path when you initially installed RipBAR, but you can change this should the need arise.

Customizing RipBAR's Background



You can select a picture (bitmap) that RipBAR will display as the background on the bar. To do this, drag a bitmap file from File Manager or Explorer to an empty space on the bar while holding down the CONTROL (CTRL on some keyboards) key. To restore the default RipBAR background, simply select "*Clear Background*" from RipBAR's menu.

Popout Groups & Changing A Group's View Mode

RipBAR groups can be configured to "Popout" into separate bars. Items in Popout bars may be configured in icon view (the default) or in list view-- simply select "*List Mode*" from a popout bar's menu.

Tips

- To access a Popout group's menu, right-click on an empty space on the bar.
- To pop a group out into a separate bar, right-click on a group tab and select *Popup*.
- To have a group *always* Popout into a separate bar, turn this option on in the Customizer dialog for that group. For more information, see [Customizing RipBAR Items](#).

Minimizing RipBAR

To Minimize RipBAR, simply double-click with the *left* mouse button on the title bar.

What happens after you do this depends on how the *Customized Minimize* option was set in Preferences.

If you *don't* have *Customized Minimize* set :

When you minimize RipBAR, the window turns into an icon and goes to the bottom of the screen beside all other minimized programs-- just like any other Windows application.

If you *do* have *Customized Minimize* set :

By setting the *Customized Minimize* option on, you are able to determine how small RipBAR shrinks, and what location the bar moves to when you minimize it. The first time you minimize RipBAR after it has been installed on your computer, RipBAR will minimize to the top left corner of your screen so that only the Clock Tool is visible. You can now move RipBAR to wherever you like-- and resize it to display any additional information you want. Double-Click with the *left* mouse button on the title bar, and RipBAR is restored to its full size and original location. Hereafter, RipBAR will remember where it was when it was minimized.

(Note this feature not supported in Windows 95 & Windows NT V4.0)

RipBAR Item Menu Popups

Click once with the *right* mouse button to display the menu Popup for a RipBAR item (either application or group).

The menu provides the following options:

(Item Name) (Launch)

This runs the selected application, or opens the selected group. It is equivalent to double-clicking with the left mouse button on an item.

Launch With Parameters

This runs the selected application, but first opens a dialog allowing you to specify a command line to pass to the application-- i.e. to specify a document to load etc. You can permanently set a command line to pass to an application in that item's Properties dialog.

Launch Minimized

This runs the selected application as minimized-- i.e. appears as an icon. You can permanently set this option in the Properties dialog for an item (see [Customizing RipBAR Items](#)) but this is good for a once-in-a-while situation.

Properties...

This opens an application's Properties dialog. (See [Customizing RipBAR Items](#)) You can also get to the Properties dialog by typing ALT-ENTER with an item selected.

Move...

This opens the Move dialog-- allowing you to move the selected item to another group on the bar. (See [Copying ToolBar Items To Other Groups](#))

Delete From Bar...

This allows you to remove an item from the bar. RipBAR will request a confirmation.

Stop Tracking

(RipBAR Pro only) Selecting this option will mark the item on the bar as no longer running. Use this option if an application previously being tracked shut down (or crashed) and is still showing up as running on the bar.

Popup

(Option only available for Group items) Will cause the group in question to appear in its own popup bar. If you would like a particular group to always appear in its own popup bar, set this option in [Customizing RipBAR Items](#).

Export...

(Option only available for Group items) This allows you to export a RipBAR group to the Program Manager. (See [Exporting Groups To The Program Manager](#).)

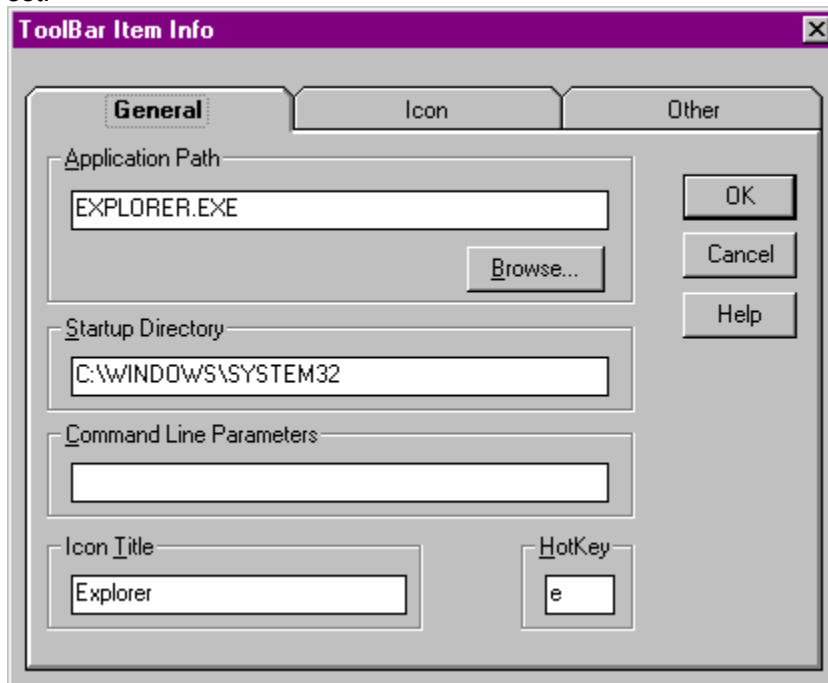
Cancel

Closes the menu Popup.

Also, if you have right-clicked on a group tab, RipBAR will add the names of all groups on the bar to the menu. Select one to proceed directly to that group.

Customizing RipBAR Items

Both icon items and groups (displayed as tabs on the bar) may be customized. To customize certain properties of an item on the bar, right click on it with the *right* mouse button and select **Properties** from the item's popup menu. (Or use the keyboard and type **ALT-ENTER** with an item selected) This will result in a dialog box that lets you set the startup directory, and any command line options you want to set.



The dialog contains three groups of options. See the following sections for more information.

Related Topics:

[General Options](#)

[Icons](#)

[Other](#)

General Options

Application Name (Full Path)

Specify the executable file name along with the drive letter and path. In Windows 95 and Windows NT, this path can include environment variables like %systemroot%.

Startup Directory

This is the path that RipBAR will launch the application from. Some applications need to be started from whatever directory the executable file is in because they need access to custom files or DLL files there. Other times, you can set the startup directory to be whatever directory you want the application to save and retrieve documents to/from. For instance, if your word processing documents are stored in E:\DOCUMENT, you might want to set this as your startup path. If your application does not launch correctly from RipBAR, try setting the startup path to whatever directory the executable file is in.

Command Line Parameters

Use this field to store any arguments you want to pass to an application. Consult the documentation that accompanies your application to see what type of arguments you can pass to it.

Icon Title

If you have set RipBAR to display icon names (see [Customizing RipBAR \(Preferences\)](#)) then whatever text is entered in this field shows up as the name. If you have "Menu Popups" set in Preferences, the name will show up there too. When adding new applications to the bar, the name defaults to the application's file name.

HotKey

Select a HotKey sequence -- Typing this combination from anywhere in Windows, will launch this application. If the icon you're setting up is a group, then typing this combination will open the group.

Icons

There are times that you will want to change the icon RipBAR places on the bar when you add an application because you like something else better, or because the application has no icon.

Bring up the Item Customizer, by double clicking with the *right* mouse button (or by right clicking and choosing *Properties* from the popup menu) on an item icon. Click on the *Icon* tab in the dialog.

All icons for the current application are displayed. To choose one, just click on it. If you'd like to select an icon from another file, click on *Browse*. This will allow you to choose either an EXE , DLL or most any other icon library file from which to display icons.

RipBAR will save the icon you choose so that the application on the bar will always come up with the icon you choose.

Other

Run State

Determines how the application will start up. Either minimized, maximized or "normal". (Note : If you only occasionally want to run an application minimized, -so don't want to permanently set it here- see [RipBAR Item Menu Popups](#))

Show This Item In All Groups

When selected, this toolbar item will be shown in all groups. When selected, try to keep the item near the top of the bar-- this will ensure that it is displayed in the same location in all groups.

Always Prompt For Parameters

When selected, RipBAR will always pop up a dialog asking you for command line parameters whenever you run this item.

Don't Show This Group In Group Tabs

When selected, this group's name won't be displayed in the Group Tabs on the toolbar.

Popup Group Tool When Activated

When selected, the group will always appear in a separate popup bar when you try to switch to the group in question.



Pro Run In Separate Memory Space (Windows NT only)

If the application you are launching is a 16 bit Windows application, you can choose to run it in Separate Memory Space-- a feature provided by Windows NT and used by RipBAR. When you run 16 bit Windows applications in Separate Memory Space, they enjoy full crash protection (i.e. if the crash, they affect no other running Windows programs) and they are preemptively multi-tasked vis-a-vis other running Windows applications. You can set an application to always start in Separate Memory Space by setting this option here. Alternatively, you can choose to occasionally run an application in separate memory space by holding down the **Alt** key as you perform the launch.



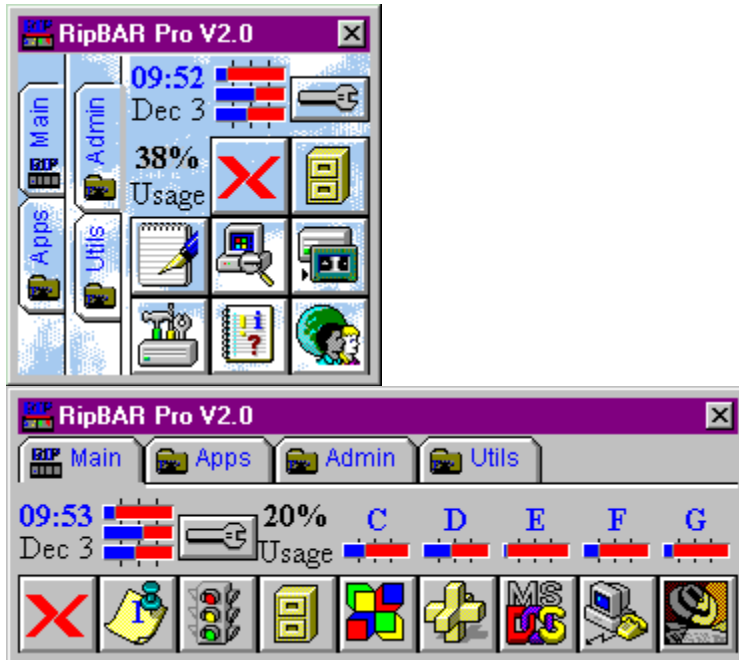
Pro Priority (Windows NT & Windows 95 only)

Use this group of settings to determine the priority with which Windows will run the application. Setting the priority to *High* will mean that this application will get most of Windows' processing time, while setting the priority to *Low* means that the application won't get much processing time at all.

Deleting RipBAR Items

To delete an item on the bar, bring up the popup menu for it and select *Delete From The Bar*. Alternatively, you can press the *Delete* key on your keyboard.

Changing The Way RipBAR Looks

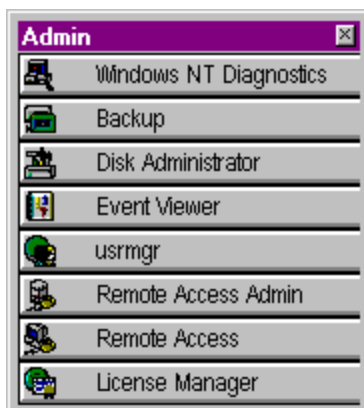


Changing RipBAR's Size

Upon installation, RipBAR is displayed by default, in a vertical fashion with one column of icons. You may resize RipBAR by dragging one of the bar's borders with the mouse. This way, RipBAR can be positioned horizontally, or widened so that icons appear in columns. RipBAR will automatically arrange the icons so that icons fit properly. If the size of RipBAR's window is too small, you won't see all of the icons. See the pictures above for sample RipBAR layouts. If this becomes a problem, set the Auto-Size feature in Preferences. (See [Customizing RipBAR \(Preferences\)](#).)

Changing RipBAR's Background

To learn how to customize RipBAR's background so that it displays the picture of your choice, see [Customizing RipBAR's Background](#) for more information.

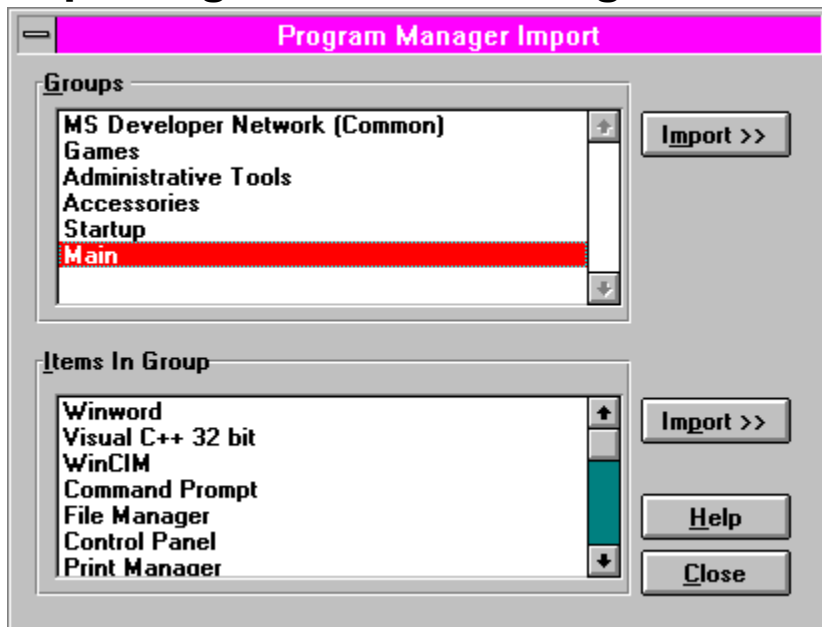


Changing How Popout Groups Are Displayed

Items in Popout groups can be set to display as icons (the default view) or as a list of items. To learn

how to do this,

Importing Items From Program Manager



*Note: Importing from Program Manager is not supported in Windows NT V4.0 or Windows 95. When using these operating systems, you can simply drag an item or an entire folder from your **Programs** folder on to the bar.*

RipBAR provides the ability to import Program Manager items and groups to the bar. Choose **Import...** from the RipBAR menu.

A dialog gets displayed that shows two lists-- one of all Program Manager groups, and one that shows all items in the selected group.

To Import A Program Manager Group

Choose a group and click the **Import** button next to the groups list. You will be prompted for the new name of the group that will be created in RipBAR. The default is for the group name as it appears in Program Manager. If you select **OK**, RipBAR will create a new group on the bar and place all imported items into it.

To Import A Single Program Manager Item

Choose the Program Manager group that contains the item you want to import and select the item from the second list. Click on the **Import** button next to the item list. RipBAR will import the item to the group currently being displayed on the bar.

Importing From Something Other Than Program Manager

RipBAR's *Import* feature is meant to work exclusively with Program Manager. However alternate Windows shell programs (like Norton Desktop and PC Tools for Windows) attempt to emulate the "dynamic conversations" (the means by which RipBAR communicates with Program Manager) that Program Manager supports.

To date, RipBAR has been tested with PC Tools for Windows. RipBAR's *Import* feature **does not function at all** with PC Tools for Windows **V1.0**, but **does work with the latest V2.0**.

RipBAR's *Import* feature has *not* been tested with Norton Desktop or any other alternate Windows shells.

Exporting Groups To The Program Manager



(In Windows 3.1 and Windows NT 3.5 only)

RipBAR allows you to export a RipBAR group to Program Manager. To do this, you must have *Item Popups* (see RipBAR Item Menu Popups) enabled.

Right-Click on a group (or group tab) on the bar to display the item's menu. Select the *Export* option. RipBAR will ask you to confirm that you want to create a new group in Program Manager and export all group items there. If you confirm the action, the items that got exported will be available in Program Manager for launching.



System Information Tool

Whether you are running RipBAR on Windows 3.1 or Windows NT, an overview of your system is presented. You gain access to this information by double-clicking on the Memory Display pane.

The information presented depends on the operating system you are running. We start with Windows 3.1 and Windows NT information follows.

Windows 3.1 System Info

On the left of this dialog, there are important pieces of information concerning memory. In Windows Enhanced Mode, these readings include both physical and virtual RAM. You get **Physical Memory** (the amount of RAM Windows recognized at startup time), **Virtual Memory** (the amount of hard disk space Windows is using for virtual RAM), the **currently available RAM** (*Free Memory*), and the **total memory currently being used** by applications.

At the bottom on the right, the number of currently loaded/running tasks being serviced by Windows is displayed, with a list of these tasks, immediately above.

Tasks are running applications. This list will be different from what you see in the Windows Task Manager-- which displays a list of open windows on your desktop. Some applications spawn multiple tasks.

RipBAR lets you shut down a task simply by highlighting it, and clicking on the *Kill* button. This can be useful in situations where a program is crashed and has closed its window but has left remnants of itself in memory. Be careful shutting down tasks, it can sometimes lead to unpredictable behavior on Windows' part.

Exiting And Restarting Windows

Finally, you may choose to exit Windows (back to DOS) or restart Windows by clicking on the *Exit Win* or *Restart Win* buttons. RipBAR will ask you to confirm your choice.

Windows NT System Info

On the top left and right, you have the computer name and user name. The computer name was set when Windows NT was installed. The user name reflects who you are logged in as.

Next, total and available levels of Physical, PageFile, and Virtual memory are displayed. Physical memory is the RAM you have installed in your computer. PageFile memory is the amount of disk space you've set aside for this purpose in the Control Panel and Virtual memory is the total virtual addressing space available to an application.



Clock Tool

The Clock Tool displays the time and date. RipBAR lets you choose between a number of date formats (see [Time & Date](#)) and the fonts that will be used to display the information (see [Fonts](#)).

You may choose to not have the Clock Tool displayed on the bar. To do this, see [Tools](#).

Double Clicking on the Clock with the left mouse button brings up RipBAR Help.

Clicking once with the right mouse button on the Clock, brings up RipBAR's menu.



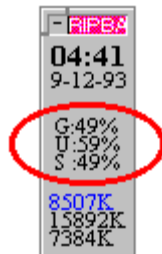
Resource Tool

Windows 3.1 and Windows 95 Only

The Resource Tool displays information about Windows resources. Resources are used by programs for storing information about icons, bitmaps and other data. This space is limited and as you have more applications loaded, there is less available resources.

The Resource Tool in RipBAR can display information in one of two ways : either in numerical form, or in graphical form. To select the type of display, see [Tool Configuration](#).

You may choose to not have the Resource Tool displayed on the bar. To do this, see [Tools](#).



Numerical Form

These numbers represent GDI, User, and System resources (in this order). The numbers are presented as *percentage remaining* -- i.e. when these hit 0, you're out of resources. Windows will begin displaying odd behavior when these numbers fall too far below 10%.

You can track an application's use of resources with the Resource Tracker



Graphical Form

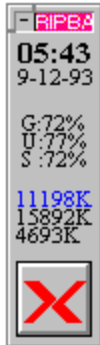


As you can see, the pane is split into quarters. Normally, the bars are drawn in blue, but if a resource falls below 25% free, the bar turns red. In the picture on the left, all resources are somewhere between 50% and 75% free. In the picture on the right, all resources are below 25% free.



Memory Tool

Windows 3.1 Windows NT



You may choose to not have the Memory Tool displayed on the bar. See [Tools](#) for information on how to do this.



Double-clicking with the *Left* mouse button on the Memory Display brings up the [System Information Tool](#). Alternatively, clicking with the *right* mouse button brings up the



[Task Manager Tool](#).

The Display

The Memory Tool in RipBAR can display information in one of two ways : either in numerical form, or in graphical form. To select the type of display, see [Tool Configuration](#).

The types of displays depend on whether you are running the Windows 3.1 or Windows NT version of RipBAR. Both are presented below:

Windows 3.1

Relevant memory information is displayed in one of two ways-- either in numerical form or in graphical form.

Numerical Form (picture above)

At the top (in highlighted colour) is the remaining free memory, still available for use by Windows. Second, is the total amount of memory in your machine Windows recognizes *plus* virtual memory. (Some memory, like that used by SmartDrive, is not included in this number.) Third, the amount of memory currently being used by Windows and running applications. (This number is the difference between the first two numbers.)



Graphical Form

The pane is divided from left to right, in quarters. Your total memory is the entire length of the graph bar. The memory in use is displayed in red, while the remaining (unused) memory is displayed in blue. In the graph above, a little over 25% of our memory is in use.

You may track an application's use of memory with the Resource Tracker.

Windows NT

Numerical Form (picture above)

Three numbers are displayed. In order from top to bottom, they are *Free Physical Memory*, *Free*

PageFile Memory, and *Total Free Memory* (both Physical and PageFile). This last number is displayed in highlighted colour.



For a description of these memory types, see [System Information Tool](#).



Graphical Form

The pane is divided from left to right, in quarters. Your total memory is the entire length of the graph bar. The memory in use is displayed in red, while the remaining (unused) is displayed in blue. Three bars are displayed -- *Free Physical Memory*, *Free PageFile Memory*, and *Total Free Memory* (both Physical and PageFile).



For a description of these memory types, see [System Information Tool](#).



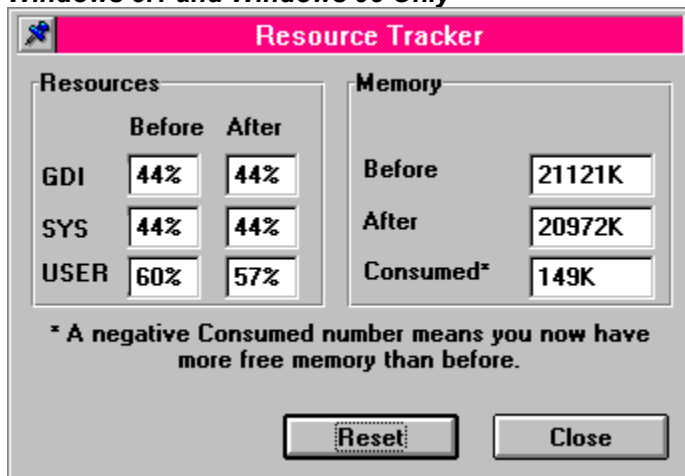
Task Manager Tool

Access the Task Manager by clicking with the right mouse button on the Memory Display pane. This pops up a menu that lists all open windows on your desktop. Simply click on whichever one you want to bring to the front. Keyboard users may type **ALT-T** to activate the Task Manager.



Resource Tracker

Windows 3.1 and Windows 95 Only



The Resource Tracker dialog box has a pink title bar with the text "Resource Tracker". It contains two main sections: "Resources" and "Memory".

	Before	After
GDI	44%	44%
SYS	44%	44%
USER	60%	57%

Memory section:

Before	21121K
After	20972K
Consumed*	149K

* A negative Consumed number means you now have more free memory than before.

Buttons: Reset, Close

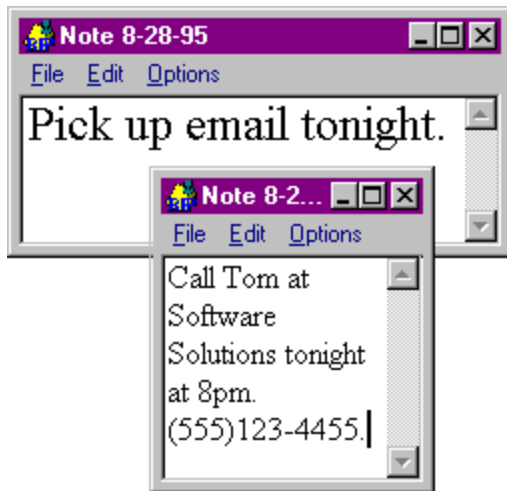
You can access the Resource Tracker by double-clicking on the Resource Display pane. Use this feature to track memory and resource consumption by a single or multiple applications.

To use this utility, invoke the dialog whenever you want to begin tracking. Click on the *Reset* button so that resources and memory are updated to reflect current system information. Close the dialog, and start / finish whatever applications you're interested in tracking. Invoke the Resource Tracker dialog again and you'll get an immediate picture of the resources and memory used by the application(s) you just used.

Many applications are sources of memory and/or resource leaks-- in other words they don't always free up the resources and memory they used. To check for this, start tracking prior to launching one of these applications. Launch the application a number of times and then go back to the Resource Tracking dialog to verify that all resource and memory readings match. If they don't, you've found your leak.



Notes Tool



What's It For Anyway?

RipBAR provides the *Notes* tool for those times that you wish you had a place to jot down a quick note about something that you can't afford to forget. You may create as many Notes as you like.

To use Notes, you must first make sure the feature is enabled. To find out how to either add the Notes to the bar, or remove it, see *Tools*.



Notes Tool Display

The Notes Tool is pictured above. It will always display the number of Notes currently opened on the screen.

Creating New Notes

To create a new Note, simply double-click on the Notes Tool. A window appears and you may type whatever you want into it. Standard editing functions like Undo, Copy, Cut, Paste etc., are available.

Notes Windows

Notes windows are displayed independently of RipBAR's toolbar. This means that RipBAR can be on top of the screen with other Notes hidden from view. (See the special notice at the end of this section for information about RipBAR's *Always On Top* feature.) They each have menus allowing you set the font the particular Note will be displayed in, read in a text file, save the contents of the note to a file, exit the note, and display information about the note.

Notes As Reminders

Notes windows are perfect for making sure you don't forget something. All Note windows left open when RipBAR is shut down, are automatically restored in their exact locations, and font settings as before.

Arranging Notes

To quickly bring all Notes to the front of the screen, and to arrange them in cascading fashion, use the *Arrange All* option from within one the Note windows. Optionally, you can click with the *right* mouse button on the Notes Tool and choose *Arrange All* from the dialog that appears. You can quickly close all Note windows by choosing *Close All* from either of these two places as well.

Setting Default Font For Use With Notes

Bring up the Notes Configurator by clicking with the *right* mouse button and choosing *Font* from the

dialog. All future Notes will use the font you just selected. To set the font for a particular Note window, use that Note window's menu.

Setting The Title Of A Note

To set the title of a note, choose *Set Title* from the Options menu of a Note. You'll be prompted for the title.

Or, let RipBAR do some of the work for you. You can enable *1st Note Line Is Note Title* in Preferences. (See [Customizing RipBAR \(Preferences\)](#).) When you start a Note, choosing *Set Title* or using the **CTRL-E** menu shortcut key, will cause RipBAR to assign the first line of your note to the title-- rather than having to type it in yourself.

Note titles are saved along with Notes so that you'll see them the next time you run RipBAR.

Notes And RipBAR's Always On Top Feature

RipBAR supports the ability to always remain on top of all other windows on the screen so that it remains in view at all times. (See [General](#) for more information on this feature.) This option however, automatically disables itself when you start creating Notes. This is because if RipBAR remained on top while you had Notes on the screen, all the Notes would stay on top as well-- cluttering your screen. You can still ensure that RipBAR remains accessible by selecting an activation hot key. (See [HotKey](#).)



Exit Tool

The Exit Tool appears as one of the default tools when you first install RipBAR.

You may choose to not have the Exit Tool displayed on the bar. To do this, see [Tools](#).

The Exit Tool behavior depends on whether you're running RipBAR from Windows, or Windows NT. Both are explained below.

Windows

Double clicking on the tool will present you with the choice to either Exit Windows, Restart Windows or Reboot your computer. It is handy when you need to quickly exit, or reload the Windows environment.

Should you choose to delete this tool from the bar, you may still exit or restart windows from the System Information Dialog.

Windows NT

Double clicking on the tool will present you with the choice to either Logoff, Restart, or Shutdown. It is handy when you need to quickly exit, or reload the Windows environment.

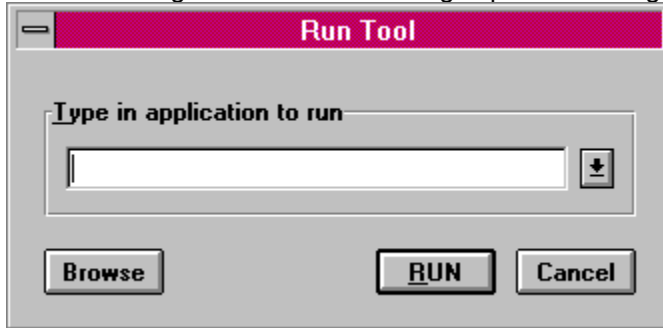


RUN Tool

The RUN Tool is displayed by default when you first install RipBAR. After that, it can be activated or deactivated by selecting the *RUN Tool* option in Preferences (Tool Display Options).

The RUN Tool may be used to launch applications, batch files and documents.

Double clicking on the RUN Tool brings up the following dialog :



You may type in the name of an application you want to run. If you neglect to include the program's file extension, RipBAR will automatically add .EXE for you. If the program needs to run from a particular directory and/or drive, include the entire path.

RipBAR will store the 20 most recent applications you have run in this fashion. You can view these by clicking on the button to the right of the command line.

(Windows only)

Also, you can "run" a document from the RUN Tool-- as long as Windows recognizes the file type. For instance, if you want to edit a particular text file, just type the path of the file and Windows will launch NotePad (or whatever you've set up) and open the document. This applies to pictures, sound files etc. If you get an error running a document in this fashion, it is probably because there is no association for this file type. For help on creating an association so that you *can* launch the document, see on page **Error! Bookmark not defined..**

Note For Windows NT Users

Should you want to run an application that resides in a directory that has embedded spaces in it's name, you should surround the path with quotation marks. Any command line arguments (i.e. file names etc.) should not be surrounded with quotation marks. An example might be :

RUN:

"THIS IS A TEST DIRECTORY\nOTEPAD.EXE" C:\AUTOEXEC.BAT

If there are no spaces in any of the directory names included in the path to the application you want to run, you need not type quotation marks.



Print Tool

The Print Tool is used to print documents that you have saved to disk. Simply drag a document to the Print Tool (pictured above) and drop it. The document will be printed by whatever application created it.

When It Doesn't Work

If RipBAR is unable to print the document, it will display a dialog box with an error message. If you get an error number, chances are you have either run out of memory, resources, or Windows can't locate all of the files necessary to start the application.

If on the other hand, RipBAR claims there is no **Association** for the file, it is because Windows doesn't recognize the file type of the document you have selected to print. This kind of problem can be corrected by creating an *Association* for the document type. For more information on creating an Association, see the section titled **Creating An Association** in **Error! Reference source not found.** on page **Error! Bookmark not defined.**



Preferences Tool

This tool is enabled in the Preferences dialog. It installs a button (pictured above) on the bar that when clicked, opens the Preferences dialog. By default, it is enabled when RipBAR is first installed.



Performance Tool

Windows NT Only

Overview

This tool is enabled in the Preferences dialog. It displays the amount of time your CPU is spending running tasks in Windows NT. The display is in percentage form and may be configured to present the data in numerical format or graphical format-- we'll discuss these shortly.

Note

RipBAR needs to access information from the Windows NT Registry database in order to gather performance data. ***At the time of the release of this version of RipBAR, the gathering of performance data was not possible while certain applications were loaded.*** For more information on problems regarding the Performance Tool, see Performance Tool Problems.

Just what is the Performance Tool measuring?

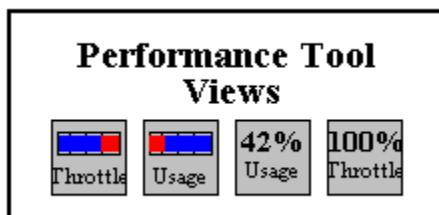
Windows NT is a multitasking environment that can run many different applications and tasks at one time. It gives a small slice of processing time to each running task in round-robin style.

Many applications however, don't require a whole lot of processing power-- take a word processor for instance. Most of the time, the word processor simply sits idle waiting for keypresses and commands. This kind of idle waiting doesn't require much processing time. On the other hand, there are some services that Windows NT is always running-- things like networking services (if these are enabled), security services and the like.

The Performance Tool is thus useful in displaying how much of the total power your CPU has to offer Windows NT is using. This gets displayed as a percentage. If the CPU usage is 100%, the CPU and Windows NT is always busy and there is a lot of activity going on. If it is something closer to 0%, then not much is going on and Windows NT is spending most of its time idle-- waiting for messages or other things to process.

Configuring the Performance Tool

The Performance Tool may be customized and configured in a number of ways. Click on the Performance Tool with the *right* mouse button to bring up the configuration dialog.



The Display - Usage Or Throttle

The display may be set to record the CPU usage percentage in two different ways. When in *Usage Mode*, the Performance Tool expresses the total percentage of time the CPU is "busy". Thus 100% means always busy and 0% means never busy. When in *Throttle Mode*, the Performance Tool expresses the total percentage of time the CPU has left to do something else-- i.e. the percentage of time the CPU is *not* busy. In this case, 100% means never busy, and 0% means always busy. *Usage Mode* and *Throttle Mode* display inverse numbers.

The Display - Numerical or Graphical

The display may also be set to show the CPU usage percentage in numerical or graphical format. (See above)

Examples

If you look at the picture above (with the four views of the Performance Tool), they represent the following in order : (1) CPU is busy 25% of the time, (2) CPU is busy 25% of the time, (3) CPU is busy 42% of the time, (4) CPU is not busy at all.

Sample Timing

Finally, you can set the frequency at which RipBAR samples the processor statistics-- expressed in milliseconds. (so that 5000 milliseconds = 5 seconds) By default, the Performance Tool is installed to sample every 2 seconds (or 2000 milliseconds). You can change this number to be anything from 500 milliseconds (every half-second) to 60000 milliseconds (every minute). In practice though, your sample time should be set no lower than 1000 (one second) or any higher than 10000 (10 seconds) milliseconds-- otherwise the readings won't make much sense. Unless you have a good reason, leave the sampling rate at the default 2000 milliseconds.



ASCII Tool

This tool is available only from the RipBAR system menu. You can bring up RipBAR's menu by clicking at the top left of RipBAR's window or by right-clicking in an empty space on the bar.

A dialog is presented that lists all of the ASCII character set along with their Decimal and Hex values.

Double-clicking on an item in the list, copies that item to the clipboard. Also, you may change the font / character set displayed in the list by choosing the **Font** button.

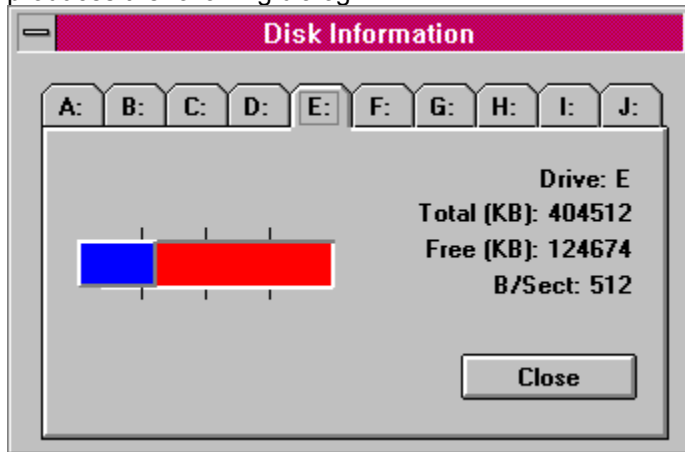


Disk Tool

Overview

This tool may be enabled in the Preferences dialog. It displays the free space for a designated drive. You can install as many of these as you like on the bar. In the picture above, Drive C is about 25% used with almost 75% remaining free space.

Double-clicking on the Disk Tool (in Windows 3.1) or choosing *Disk Information* from the RipBAR menu, produces the following dialog:



One tab will appear for each drive on your system. A graph of total/free space appears on the left, while detailed information appears on the right.

In Windows NT V4.0 or Windows 95, double-clicking on a drive tool brings up Explorer in the "Browse" mode for that particular drive.

To Modify A Drive Tool Item

If you have a Drive Tool item on the bar and you'd like to change the drive for which the information being displayed, you can do this in one of two ways:

- Delete the current Drive Tool item from the bar, and add a new one.
- Bring up the Customizer dialog for the item and modify the Command Line for that item-- the Command Line should be set to the drive letter you want to display information for.

Sound Support



About Sounds

RipBAR supports attaching sounds to certain events. To use sound, you must have installed a Windows-compatible sound card and software driver (If you don't have a sound card, you may use the Windows Speaker Driver-- allowing your PC's internal speaker to play sound. This is available from Microsoft.) Though more complete support will evolve in future versions of RipBAR, the following events may be configured to "trigger" sounds.

- Running an application on the bar.
- Warning situations like low available memory.
- Clock trigger-- every hour, half hour, or quarter hour.

Enabling & Setting Up Sounds

To enable sound, you must first tell RipBAR what sounds to use for each type of event. In this case, sounds are files on your hard disk that have the .WAV extension. To tell RipBAR what sounds to use, select the *Sounds* button from the Preferences dialog.

RipBAR presents a dialog allowing you to tell it what sound (WAV) file to play when a type of event takes place. *Chime* is a sound played either every hour, half hour, or quarter hour. *RUN Sound* is the sound played every time you run an application on the bar. *Warnings* are sounds played when memory falls below a pre-set level etc.

Clicking on any of these buttons brings up a standard file dialog allowing you to choose a sound file. Use the *Clear* button on the right of the *Sounds* dialog to clear the file name for a particular sound type-- thereby disabling that sound.

If you have selected sound files and you want to set how often the Clock chimes, or what types of warning situations will trigger a sound, use the *Chimes* or *Warnings* respectively from the Preferences dialog.

RipBAR As Windows Shell



Note: At this time, RipBAR does not support being the shell in Windows NT V4.0 or Windows 95.

You can use RipBAR *instead* of Program Manager. To do this, enable *Windows Shell* in the *General* section of Preferences.

When you do this, RipBAR will load and run each time you start Windows *instead* of Program Manager. Thus, when you close RipBAR, you also exit from Windows.

(Windows only) When RipBAR loads, it will read and process all items on the LOAD and RUN lines of WIN.INI.

Also, you can create a Group on the bar called *Startup* -- whatever items you place in this group will automatically start when RipBAR has finished loading.

Technical Notes

When you set RipBAR to be the shell in Windows NT, it sets up Windows NT so that **RSHELLNT.EXE** is launched which in turn runs the RipBAR executable. In short, make sure you don't delete the shell executable!

RSHELL16.EXE is a special bootloader program provided with the Windows version of RipBAR for those who are running Adobe Type Manager and who experience a problem with RipBAR (blank bubble help popups or other strange behaviour). If you are experiencing such problems and want to run RipBAR as the Windows shell, you can try the following fix:

- ▽ Edit SYSTEM.INI so that the SHELL= line contains the path to RSHELL16.EXE instead of RIPBAR16.EXE.

Keyboard Usage



RipBAR provides enhanced keyboard access to features for people who find the mouse inconvenient or who don't have a mouse at all.

Getting Help

Type **F1** (Function Key #1) anywhere in RipBAR.

Selecting Items On The Bar

Use the **cursor** keys (Left, Right, Up, and Down) to move from icon to icon. Press the **ENTER** key on an icon to launch it if it's an application or to open it if it's a *Group* icon. If you move past the last icon on the bar, RipBAR will wrap back to the top of the bar. (Note that if you move past the last icon and RipBAR doesn't immediately wrap back to the top, it may be because you have hidden icons that don't fit on the bar because the bar isn't big enough.)

Accessing Icon Item Popups

Type **HOME** or **SPACE** while an icon is activated to bring up an item's Popup menu.

Accessing Icon Item Properties

Type **ALT-ENTER** while an icon is activated to get to the customization dialog for that application or Group.

Running Applications via HotKey

Every application on the bar may be set up so that it launches when you type a particular key. See [Customizing RipBAR Items](#) for more information.

Moving Items On The Bar

Moving RipBAR items to different groups, is possible by typing **CONTROL-M**. See [Copying ToolBar Items To Other Groups](#) for more information.

Copying Items On The Bar

Copying RipBAR items to different groups, is possible by typing **CONTROL-C**. See [Copying ToolBar Items To Other Groups](#) for more information.

Adding Items To The Bar

Add items to RipBAR by typing **INS**.

Adding Groups To The Bar

Add a new Group to the bar by typing **CONTROL-INS**.

Creating A New Note

Creating a new Note is possible by typing **CONTROL-N**

Getting To RipBAR Preferences

Press the **CONTROL** and **HOME** keys together to bring up the Preferences dialog.

Quitting RipBAR

To quit RipBAR, press the **ALT** and **F4** keys together to close RipBAR.

Moving RipBAR on the screen

To move the RipBAR bar around on the screen, press the **ALT** and **M** keys together.

Minimizing RipBAR

To minimize RipBAR, press the **ALT** and **cursor DOWN** keys together.

Restoring RipBAR

To restore RipBAR after it's been minimized, press the **ALT** and **cursor UP** keys together.

Navigating Groups

To open a group, move to the icon for that group and press the **ENTER** key. To move back out of a group, press the **PageUp** or **ESC** key.

RipBAR TaskManager

To obtain a quick list of running applications, type **Alt-T**. (*Note : for this to work, either the Resource or Memory Tool must be active on the bar.*)

The RipBAR Menu

The RipBAR menu is accessible from the left upper corner of the bar, or by right-clicking on an empty space on the bar (or on the clock).

In this menu, you'll find the following options:

Move

Use this command to move the bar around the screen with the cursor keys on your keyboard.

Close

Exit RipBAR.

Add New Item

Add a new program or document to the active group on the bar (see [Adding Items To The Bar](#) or **Error! Reference source not found.** on page **Error! Bookmark not defined.**)

Add New Group

Add a new group to the active group on the bar (see [Adding And Managing Groups](#))

Import

Import items from Program Manager (see [Importing Items From Program Manager](#)).

Copy Item

Use this command to move the bar around the screen with the cursor keys on your keyboard (see [Copying ToolBar Items To Other Groups](#)).

Move Item

Use this command to move the currently selected item to another group or position on the bar (see [Reordering ToolBar Items](#)).


Goto Group

Use this command to activate another group on the bar.

Preferences

Displays the Preferences dialog (see [Customizing RipBAR \(Preferences\)](#)).

ASCII Chart

Displays the ASCII Tool (see  [ASCII Tool](#))

Disk Information

Use this command to activate the Disk Information Tool (see  [Disk Tool](#)).

Separate Memory Space



(Windows NT only)

Windows NT V3.5 and later provides the powerful capability to run Windows Programs in something called Separate Memory Space. Before we discuss what this means, let's take a look at how Windows NT normally runs programs.

As you probably know, Windows NT is a preemptive multitasking operating system. This means that you can run many applications at once and Windows NT guarantees that no one program can "hog" the system. The one exception to this is 16 bit Windows programs-- as a *group* these programs are run preemptively against other 32 bit Windows programs and DOS programs, but they aren't preemptively multitasked amongst themselves. This means that one 16 bit Windows program can hog system time from all other 16 bit Windows programs that are running. Perhaps more serious, a fatal error in one 16 bit Windows program under Windows NT can bring the rest of the 16 bit Windows subsystem down.

With Windows NT 3.5, this has changed. Windows NT can be told to run 16 bit Windows programs separately-- in their own *memory space*. This means that you can have 16 bit Windows programs running preemptively *and* insure that an errant application can't harm any other running ones.

RipBAR allows you set whether individual 16 bit Windows programs will be run in Separate Memory Space or not-- by setting this option in the customizer dialog for a toolbar item (see [Customizing RipBAR Items](#)) or by pressing the **Alt** key while launching an item (see [Launching Applications](#)).

Performance Tool Problems

Windows NT only.



The Performance Tool in RipBAR (see [Disk Tool](#)) displays the percentage of time that the CPU is busy running active tasks in Windows NT.

To accomplish this, RipBAR must gather performance data from the Windows NT Registry database on a continual basis (up to twice a second).

As this version of RipBAR was being readied for release, incompatibilities were noted with a few applications. It is not known at this time what the exact root of the problem is. It is known for instance, that there is a problem running the Performance Tool while Microsoft SQL Server's SQL Monitor application is running. (SQL Monitor also serves to gather performance data)

Under normal circumstances, this incompatibility would lead to an access violation in Windows NT and would result a crash-- However RipBAR can now detect the problem before it happens.

When RipBAR senses that an incompatibility with its Performance Tool is about to cause a problem, it will display a dialog box that displays a warning and notifies you that it will shut down the Performance Tool. (A **Help** button is available that takes you here in the help file) At this point, you'll no longer be able to monitor Windows NT performance from within RipBAR.

If you shut down the application that RipBAR is conflicting with (SQL Monitor for instance) you may attempt to turn back on the Performance Tool.

Future versions of RipBAR will address this problem, so check CompuServe and other locations for newer releases of RipBAR. Registered users of course, will receive notification of any future releases.

Introduction To Troubleshooting

RipBAR is updated frequently -- more than 6 times in the last twelve months alone. Every effort is made to ensure that the product you receive is bug-free.

No program is ever perfect. In some cases, there is an error in the program code that provides for unexpected results as you use the software and in other cases, it may *appear* that there is a problem, when in fact, there is a reasonable explanation and work-around.

The following sections will serve to provide insight and work-arounds for problems you may encounter. The content of these sections are derived in part from user-feedback. If you run into trouble, please contact me (the author) at one of the address listed in [About The Author & Registration](#).

Thank you,

Jonathan Carroll

Related Topics:

[Icons on the bar look strange \(Windows\)](#)

[Icons on the bar look strange \(Windows NT\)](#)

[I click on an icon and two copies of an item launch](#)

[RipBAR no longer loads properly](#)

[RipBAR Task Manager isn't available](#)

[Problems running an item on the bar](#)

[I can't see all the items in a group](#)

[RipBAR menu is missing choices](#)

[Error importing from Program Manager](#)

Icons on the bar look strange (Windows)

Problem:

RipBAR keeps all the icons images that appear on the bar, in a file called **RIP_BAR.ICF** in your WINDOWS directory.

It is likely that either this file has become corrupted or that RipBAR has incorrectly determined the video resolution that your Windows' configuration is running.

Fix:

Quit RipBAR. Locate the **RIP_BAR.ICF** file in your WINDOWS directory and delete it. Now go ahead and run RipBAR-- this will force RipBAR to rebuild the icon cache file.

Fix:

If the above doesn't work, then you may disable the icon cache process as a last resort. To do this, enable the *Disable Icon Cache* option in Preferences.

Icons on the bar look strange (Windows NT)

Problem:

RipBAR keeps all the icons images that appear on the bar, in a file called **RIP_BAR.BCF** in whatever directory you specified as your data directory.

It is likely that either this file has become corrupted or that RipBAR has incorrectly determined the video resolution that your Windows' configuration is running.

Fix:

Quit RipBAR. Locate the **RIP_BAR.BCF** file in your data directory and delete it. Now go ahead and run RipBAR-- this will force RipBAR to rebuild the icon cache file.

Fix:

If the above doesn't work, then you may disable the icon cache process as a last resort. To do this, enable the *Disable Icon Cache* option in Preferences.

I click on an icon and two copies of an item launch

Problem:

The problem may be caused by the Activation option you've chosen--i.e. you have *Single Click Activates* enabled in Preferences (in which case double-clicking starts an application twice). If you are double-clicking an item, it will launch twice.

Fix :

Disable *Single Left Click* or *Single Right Click* in Preferences.

RipBAR no longer loads properly

Problem:

RipBAR no longer loads properly-- either you get a system crash, or something about the bar configuration or display is wrong.

If all of a sudden, RipBAR ceases to operate properly, you may try three fixes-- try the following in order. (If the first fix doesn't solve your problem, try the second and then the third)

Fix :

Your RipBAR Notes file has become corrupted. The beginning of this file contains the number of notes in the file. If this information was corrupted, RipBAR may be trying endlessly to load the notes. Delete the **RIP_BAR.NOT** file from your WINDOWS directory (if you're running Windows) or from whatever directory you set (if you're running Windows NT.)

Fix :

Your RipBAR settings file has become corrupted-- RipBAR uses this file to decide what to place on the bar and something in the file is causing RipBAR to misbehave. If you are running Windows 3.1, delete both the **RIP_BAR.INI**, **RIP_BAR.NOT**, and **RIP_BAR.ICF** files from your Windows directory. If you are running Windows NT, delete **RIP_BAR.NOT** from whatever directory you told RipBAR to store its Notes in and then start REGEDT32.EXE. (You can do this from the File|Run menu item in Program Manager or File Manager) Once in REGEDIT, go to the CURRENT_USER window and double click the *Software* folder, and next the *RIP Applications* folder. Now highlight the *RipBAR* folder and type the *Delete* key (DEL). This clears the RipBAR settings. Now go ahead and try restarting RipBAR.

Fix:

The RipBAR program files have been corrupted. Re-install the files that you originally downloaded or otherwise received for RipBAR.

RipBAR Task Manager isn't available

Problem:

When you use the RipBAR Task Manager HotKey (alt-T), the Task List doesn't come up. There are two possible causes:

- First, RipBAR wasn't the active window on the screen when you tried to type Alt-T.
- Second, you don't have either the Memory Tool or the Resource Tool active on the bar.

Fix:

For the first case, make sure RipBAR is the active window on the screen (use your RipBAR HotKey to activate RipBAR and *then* try the Task Manager HotKey. For the second case, enable either the Resource Tool or Memory Tool-- one of these must be active on the bar for the Task Manager to work.

Problems running an item on the bar

Problem:

RipBAR reports an error when you try to run an application.

Fix:

- Ensure that the path and file name for the item is correct-- check in that item's *Property Dialog*.
- Some applications need to have the *Startup Directory* set to be the same as the directory that contains that application's .EXE file. Go to the *Properties Dialog* for the item and make the Startup Directory the same as the directory listed for the application's path.

I can't see all the items in a group

Problem:

A group on the bar is so large that you can't see all the items in that group.

Fix:

Try some of the following:

- Make the bar larger.
- Turn on *Auto-Sizing* in Preferences so that the bar automatically enlarges when it needs to.
- To save space, enable *Hide Group Icons* in Preferences-- if you have *Group Tabs* enabled, the Group Icons are redundant and waste space.
- Break up a large group into smaller ones, or nest some groups inside of others.

RipBAR menu is missing choices

Problem:

The RipBAR menu doesn't contain the options listed here in this help guide.

Fix:

To get all of the menu options, you need to enable *Half-Height Title Bar* in Preferences or, if you have the full-height title bar, bring up RipBAR's custom menu by right-clicking on an empty space on the bar, or by right-clicking on the clock.

Error importing from Program Manager

Problem:

RipBAR reports an error while trying to import groups or items.

Fix:

You may be running an alternate shell program-- like Norton Desktop or PC Tools for Windows. RipBAR cannot import from PC Tools for Windows V1.0 at all, it has been tested with V2.0 and works. It is untested with Norton Desktop. Try running Program Manager before doing the import (if it isn't already running).

Glossary of Terms

Tabs

Registry

Setup File

executable file

DLL

title bar

System Menu

Tabs

Used to contain a title that may be clicked on for further action. In RipBAR, these are used in dialogs to group settings, and are used on the bar itself to denote groupings of items.

Registry

This is the database used by all versions of Windows to store system information. In Windows NT, RipBAR uses the Registry database to store its settings.

Setup File

In Windows 3.1, this refers to the RIP_BAR.INI file that RipBAR uses to save its settings. In Windows NT, RipBAR writes entries to the system registry database.

executable file

The application's main program file. Usually has an .EXE file name extension.

DLL

Dynamic Link Library. These are files that belong to applications. Sometimes much of an application's functionality is contained in Dynamic Link Libraries.

title bar

The top portion of a window that displays the window's title.

System Menu

Sometimes called the Control Menu. It is accessed in most windows by clicking on the button in the top left hand corner of the window. Provides access to options like Close, Move etc.

