

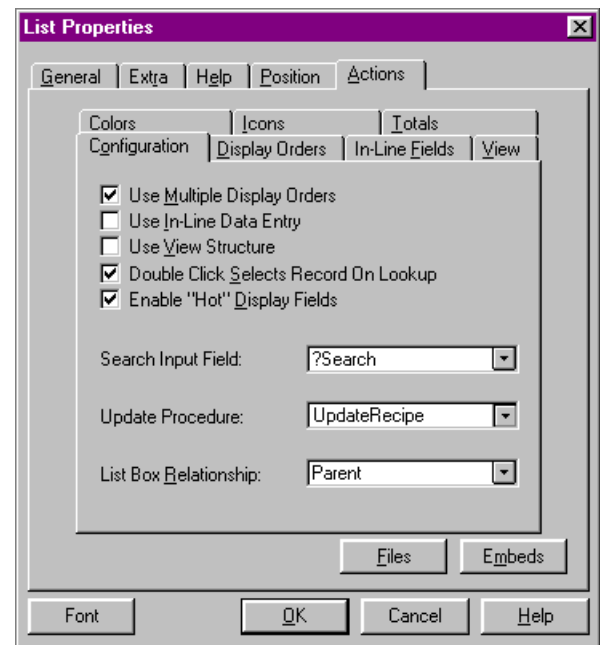
Power Browse

The Ultimate Browse Template

Building advanced power into your Clarion for Windows applications is easy if you start with the right templates. Power Browse lets you create feature-rich browse procedures effortlessly. Whether you're a novice or advanced user you'll be creating page-loaded list boxes with all the advanced features your users are demanding in no time at all. Take a look at the features below to see what's made Power Browse so popular.

Power Browse Features:

- Uses a generic browse library for at least a 50% reduction in code size over the standard CW templates.
- Support for multiple sort order displays (allows you to specify a different key order and a different list box format for each display order). Allows the standard CW tabs, a drop down list box, option box, or various VBX* tab controls to be used for selecting sort orders.
- In place editing feature with batch entry mode capability. Both form and in-line updates can be used on the same list box so your users can quickly edit a few key fields or edit the entire record.
- Allows you to choose whether you want to use a view or not.
- Full support for color and icons in the list box including different colors and icons for each display order.
- Browse windows can be resized and the main list box will expand automatically.
- Mark records using a memory queue. Included extension template lets you easily print or process these records.
- Reverse sort order feature allows you to display browses in reverse key order. Also, use the reverse order control template to populate a button that allows your user to switch between normal and reverse orders.
- Page-Loaded Drop Combo Browse control that utilizes the Power Browse library.
- Wizards included to create Power Browse procedures.
- Full on-line help facility and printed manual with step-by-step tutorial.
- Neat, readable and fully commented royalty free source code is generated.
- and more...



Power Browse 1.5 Template Interface



"I know the quality of work this company does, it is surpassed by none. I have used other Power products for years, and there is nothing else on the market as comprehensive and tightly coded as these templates." - **Ross Santos**

Power Popup

The easy way to do popup menus!

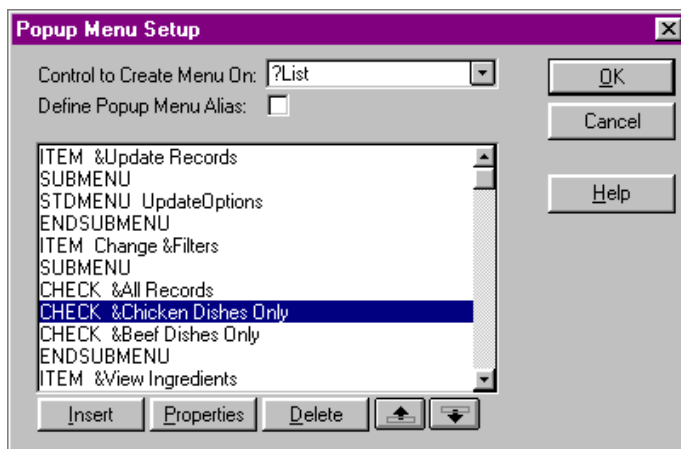
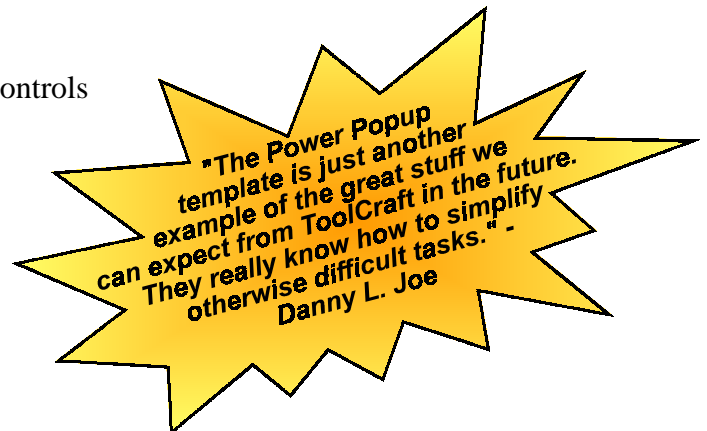
Popup menus are a feature that your users will greatly appreciate. They allow users to quickly access common features with a simple click of the right mouse button. With the CW Popup function, you can certainly add this feature, however you still have to write the code to call the function and then manage all the menus yourself. Why go to all that extra effort?

The Power Popup template will let you add full-featured popup menus to your own applications just by answering a few prompts, that's right--no programming required. Power Popup even lets you define global popup menus that can be used throughout your entire application. That means you only have to define a menu once instead of every time you want to use it in a different procedure. The Power Popup template provides you with an extensive popup menu library that is fully integrated into the application generator. In a matter of minutes you can register Power Popup and be creating full-featured popup menus without any coding.

Clarion Popup vs. Power Popup Functions:

Clarion for Windows 1.5 provides you with only one rudimentary function that leaves all the work of managing your popup menus up to you. However, Power Popup gives you a fully integrated template along with the following functions that make it easy to manage sophisticated popup menus:

- CreatePopup - create a new popup menu
- AliasPopup - use the same popup menu on multiple controls
- DisablePopup - disable a popup menu or menu item
- EnablePopup - enable a popup menu or menu item
- HidePopup - hide a popup menu or menu item
- UnhidePopup - unhide a popup menu or menu item
- PopupIsChecked - check to see if an item is checked
- SetPopupChecked - set a check item's status
- SetPopupText - set a menu items text string



Power Popup Template Screen



Screen generated from menu setup shown on left.

Query Wizard

Add powerful user friendly queries to any application in minutes!

Providing your users with customizable access to their data is something they will thank you for over and over. Query Wizard, the newest template in the Power Templates product line, makes it possible for you to add these capabilities to your applications without any coding. Query Wizard provides a wizard interface for your end-users that will allow them to create and save their own queries and then use those queries to view data in a browse (standard Clarion browse or a Power Browse), print a report, or process records. This interface can be accessed through a set of query buttons or through a drop down list control which displays a list of saved queries. Query Wizard utilizes the PROP:Filter condition giving your end-user's optimal performance.

The image displays four sequential screenshots of the Query Wizard end-user interface:

- Query Wizard Field Selection:** A dialog box titled "Query Wizard Field Selection" with the instruction "Select a field from the list below." It features a list box labeled "Fields to Evaluate" containing fields like AUT.Make, AUT.Model, AUT.Vehicle Identification Number, etc.
- Query Wizard Operation Selection:** A dialog box titled "Query Wizard Operation Selection" with the instruction "Select a query operation to perform on the selected field." It shows a list of operations like "Is Equal To", "Is NOT Equal To", etc., with "AUT.Make" selected.
- Query Wizard Value Entry:** A dialog box titled "Query Wizard Value Entry" with the instruction "Enter a value to complete your expression." It has radio buttons for "Constant Value", "Another Field", and "Expression". The "Constant Value" option is selected, and the text "Mustang" is entered in the input field.
- Query Wizard:** A final dialog box titled "Query Wizard" showing the constructed query: "DLR Name Contains FORD AND DLR State Is Equal To CA AND AUT.Make Is Equal To Mustang". It includes buttons for "AND", "OR", "Change", "Delete", "Finish", and "Cancel".

Query Wizard End-User Interface

The Query Wizard end-user interface is very easy for users to understand. It leads them through building their queries step-by-step just like the Clarion Wizards lead you through building an application. In no time the user will be able to build and save a set of queries tailored just for them.

You, as the developer, provide your end-user with a list of fields that you want them to have access to and the Query Wizard lets them do the rest. This list can include fields from multiple files as well as local data variables and/or expressions that you define.

The image shows the "Query Wizard Setup" dialog box with the following configuration options:

- Files to Exclude:** A list box.
- Field Overrides:** A list box.
- Configuration:** A tabbed interface with "Wizard Behavior" and "Expressions" tabs.
- Query Classification:** A text field containing "AutosWithDealerInfo".
- Query Description Field:** A text field with a browse button (...).
- Query List Box Control:** A dropdown menu showing "?Browse:1".
- Disable Query Wizard Update Options:** A checkbox with the note "(limits a query droplist to pre-defined queries only)".
- Buttons:** "OK", "Cancel", and "Help".

Query Wizard Template Interface

The Query Wizard template interface is also very easy to use. To add the Query Wizard features to an application you simply add a new extension to your app. Then for each browse, report or process that will use the query you add the local extension and populate a control that calls Query Wizard.

You can then customize the Query Wizard interface by answering the prompts in the template. These options will allow you to easily customize the list of available fields, add your own runtime variables or expressions, relabel field names and much more.

Query Wizard's flexibility and ease of use make it the ideal Clarion for Windows query template.

See next page for details on how you can try our templates for FREE!

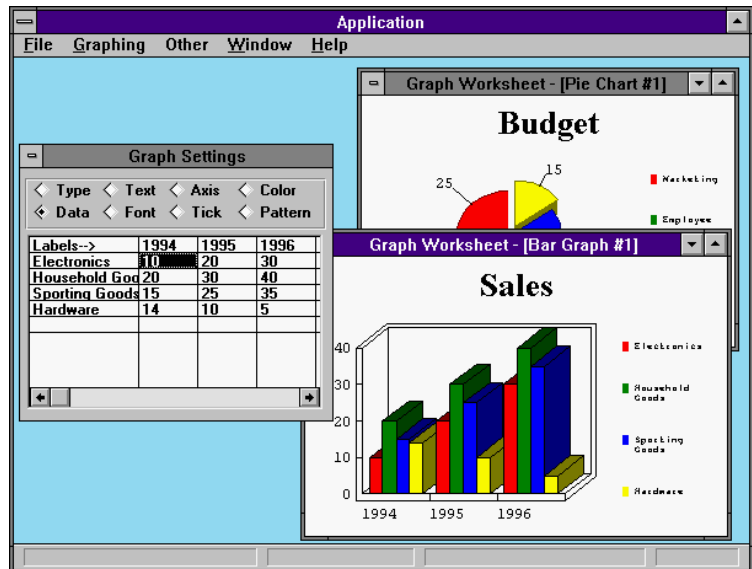
Chart Wrapper

for owners of ChartBuilder Graph.VBX*

ChartWrapper allows you to add a full end-user interface for the Pinnacle ChartBuilder VBX to your application without any coding at all. In addition, it provides you with a full set of functions to assist you in developing customized graphs with your own data.

Library Functions Include:

- CB_Add Data
- CB_DisplayGraph
- CB_LoadGraph
- CB_SaveGraph
- CB_DeleteGraph
- CB_SaveImage
- CB_CreatePrintImage
- CB_CopyToClipboard
- CB_OpenToolBox
- and more...



NOTE: Designed for use with version 2.0 and 2.51. Also works with the graph control in Graphics Server 2.51 and 4.0, however only 2.51 level custom control features are supported. Template only supports 16-bit development at this time.

30 Day Money Back Guarantee

If for any reason you are not completely satisfied with your purchase simply return it within 30 days to receive a full refund (less shipping and handling).



21040 Homestead Road
Suite 202
Cupertino, CA 95014

To Order Call Toll-Free
1-888-732-4300

Phone (408) 732-4300 Fax (408) 732-4372
E-Mail: 75244.2146@compuserve.com

Get a FREE Trial Version of Power Templates

The trial pack versions of the Power Templates are fully-functioning versions of each product except for a splash screen and a time-out limit.

Visit our WEB site at <http://www.toolcraft.com> and you can download our latest trial versions and see Power Templates in action. You may also download them from the TopSpeed forum on CompuServe. Search for the keyword ToolCraft in the 3rd party library for the current listing of available Power Template demos and trial packs.

Attention Power Template 1.5 Users!

The latest details on upgrades for our new 2.0 versions, including pricing, availability and beta versions will be available on our Internet site. Beta versions for all 2.0 products not yet shipping are available for download at www.toolcraft.com. All betas are free of charge so you won't be paying to help us test our software. When the final version is ready, simply give us a call and place your upgrade order.