



---

## Installation and User's Guide

TERABYTE UNLIMITED

1350 Town Center Dr #1049

Las Vegas, NV 89144

<http://www.TeraByteUnlimited.com>

ASP Member

Copyright © 1996-2004 by TeraByte Unlimited, All Rights Reserved.

Trademarks

BootIt and PHYLock are trademarks of TeraByte Unlimited.

Microsoft, MS, MS-DOS and Windows are registered trademarks of Microsoft Corporation.

IBM, PC-DOS and OS/2 are registered trademarks of the International Business Machines Corporation.

All other trademarks and copyrights referred to are the property of their respective owners.

Manual design and content designed by:  
Technical Standards (TSI)  
760 N. West El Norte Pkwy  
Suite 491  
Escondido, CA 92026  
760-233-7570

## Technical Support Policy

Technical support is provided on-line. The most current version of software and documentation is available at <http://www.terabyteunlimited.com>.

Registered users should email their questions to: [support@terabyteunlimited.com](mailto:support@terabyteunlimited.com)  
If the issue is not resolved, telephone support will be provided.

Unregistered users will be provided technical support and product information through e-mail only.

In all cases TeraByte Unlimited reserves the right to refuse any communication method that would incur a cost.

## Ombudsman Statement

This program is produced by a member of the Association of Shareware Professionals (ASP). ASP wants to make sure that the shareware principle works for you. If you are unable to resolve a shareware-related problem with an ASP member by contacting the member directly, ASP may be able to help. The ASP Ombudsman can help you resolve a dispute or problem with an ASP member, but does not provide technical support for members' products. Please contact the ASP Ombudsman online at <http://www.asp-shareware.com/omb>.

## Table of Contents

Technical Support Policy .....	3
Ombudsman Statement .....	3
Table of Contents .....	4
What Is Image for Windows? .....	5
System Requirements.....	5
Installing the Software .....	6
Extracting the CDBOOT.F35 File .....	6
Starting Image for Windows.....	7
Configuring Image for Windows Settings.....	8
Backing Up Your System.....	10
Backing Up the System Partition.....	12
Deploying Your Image .....	12
Windows XP: .....	12
Windows 2000: .....	12
Windows NT: .....	12
Restoring Your System from a Backup.....	13
Running Image from the Command Line.....	15
Environment Variables .....	15
Command line options.....	15
Writing a compressed image to a file:.....	16
Writing an uncompressed image to a file: .....	16
Writing a compressed image to a CD drive: .....	16
Writing an uncompressed image to a CD drive: .....	16
Restoring an image from a file:.....	17
Restoring an image from a CD:.....	17
Limiting the file size on creation:.....	17
Running the Program from a batch file:.....	17
Creating a bootable CD.....	17
What is Shareware.....	19
TeraByte Unlimited (Trial-Use) License Agreement .....	20
TeraByte Unlimited (Full-Use) License Agreement.....	23
Image for Windows – Order Form.....	27

## What Is Image for Windows?

Image for Windows is a Win32-based backup/restore program. It protects your system by creating a compressed or uncompressed “snapshot” of all used areas of your FAT, FAT32, NTFS, Ext2/3, ReiserFS partition or volume. For other file systems, it saves and restores a compressed or uncompressed snapshot of all sectors in the partition or volume. Content is written to a set of files or directly to a writable DVD or CD. Your computer is protected from a crash or malicious invasion by allowing you to restore the snapshot image.

When you create the image, the file system and files are backed up as they were on your drive at the time of the backup. Image for Windows does not skip files or assume that some files, such as swap files, don’t need to be backed up. If you are using PHYLock, the swap file will not be backed up.

If you need to restore a single file, you can use TBIView.

Image for Windows is compatible with the image files created by BootIt NG or Image for DOS.

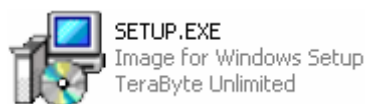
### System Requirements

If you will be restoring outside of Windows, or are running Win9x/ME, your computer BIOS must provide access to the hard drive.

Hardware	<ul style="list-style-type: none"><li>• IBM-compatible personal computer.</li><li>• 32 MB RAM minimum</li><li>• Writable CD or DVD drive (optional)</li></ul>
Operating System	<ul style="list-style-type: none"><li>• Windows NT (requires Administrator privileges)</li><li>• Windows 2000 (requires Administrator privileges)</li><li>• Windows 2003 (requires Administrator privileges)</li><li>• Windows XP (requires Administrator privileges)</li><li>• Windows 95 (using Int 13h extensions)</li><li>• Windows 98 (using Int 13h extensions)</li><li>• Windows ME (using Int 13h extensions)</li></ul>

## Installing the Software

1. From the [www.terabyteunlimited.com](http://www.terabyteunlimited.com) web site, click the **Image for Windows** link under Downloads.
2. When the **File Download** window displays, click **Save**.
3. Select a location to save the zipped file, imagew.zip.
4. Once the download completes, locate the imagew.zip file you saved and double click it to unzip the files. If you don't have an unzip program installed on your computer you'll be asked which program should be used to open the file. In this case, click cancel; you'll need to locate, download and install an unzip utility such as winzip. Once you have opened the zip file and see the setup program icon you can continue to the next step.
5. Close open programs and then double-click Setup.exe.
6. The setup wizard will guide you to installation.  
Simply follow the instructions given to you. At some point you may be asked if you want to replace CDBOOT.F35. If you have already extracted the CDBOOT.F35 file from the registered version of Image for DOS to the Image for Windows program directory, or have created your own custom file, reply "NO." Otherwise, answer "YES" to use the shareware version included with Image for Windows.
7. Follow the remaining instructions in the installation program.



### Extracting the CDBOOT.F35 File

This section only applies if you have purchased Image for Windows. CDBOOT.F35 is the file that creates a bootable CD/DVD. When using a registered copy of Image for Windows you must use a full-use version of CDBOOT.F35, otherwise when booting the CD/DVD it will not allow you to restore the image; the full-use version can be found in the purchased version of Image for DOS (imagereg.zip).

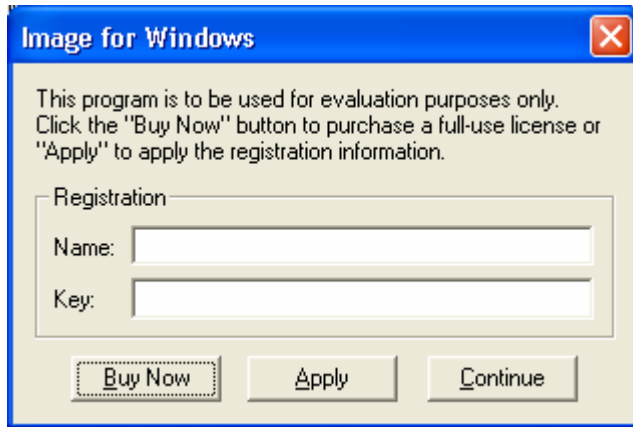
If you fail to perform the extraction, you will need to run a registered copy of Image for Windows or Image for DOS from diskette or CD/DVD to restore the image from the CD/DVDs.

1. The link to download the full-use version of Image for DOS is included in the email you received when you purchased the software. Click the link to begin the download.
2. Save the file to your drive.
3. Locate the imagereg.zip file you downloaded and saved then double-click it.
4. Choose the Extract All Files option from the unzip utility.

Extract the files to the Image for Windows program folder. By default it would be "C:\Program Files\Image for Windows". If during the extraction it finds files that already exist and asks if you want to replace them, choose "YES".

## Starting Image for Windows

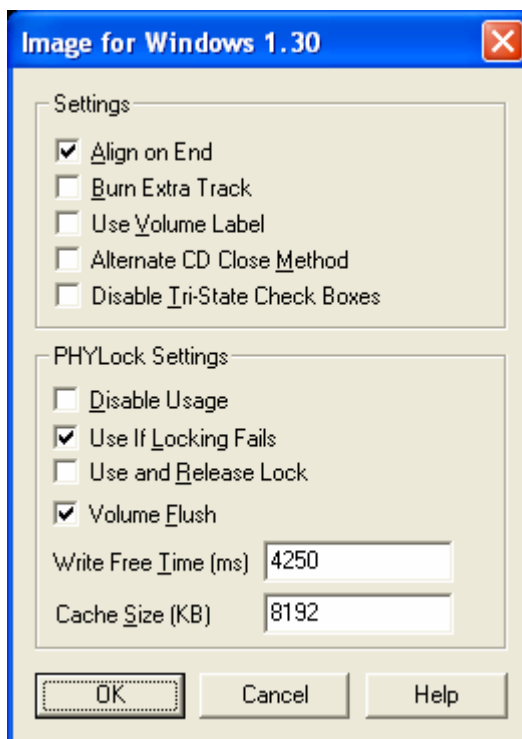
1. The first time you start Image for Windows, a registration screen will display. If you are using the trial version, click Continue.



2. If you have purchased the program, you will have received an e-mail with the Registration Name and Key. Enter the name exactly as it appears in the e-mail, including any numbers following the name (the name is everything after [name] and before [key] – sometimes the email wraps part of the name to the next line). Enter the Key exactly as shown in the e-mail.
3. Click **Apply**. Image for Windows will display.

## Configuring Image for Windows Settings

The first time you start Image for Windows, you should make sure the settings are appropriate for your system.



1. Click the **Settings** button.
2. Check a box to enable a setting.
3. Click **OK**.



<b>Settings</b>	
<b>Align on End</b>	Ensures that restored partitions are aligned at the end of a cylinder. You should leave this setting checked.
<b>Burn Extra Track</b>	Enable this option to write the image summary data to CD one as track two when directly imaging to CD. When burned this way, you won't have to insert the last CD before beginning the restore. NOTE: This option may not work correctly with all CD devices.
<b>Use Volume Label</b>	If this option is enabled and the drive contains an EMBR then FAT/FAT32/HPFS partition names will be that of the volume label instead of the name in the MPT. If no EMBR exists then this option is assumed.
<b>Alternate CD Close Method</b>	If you experience errors or problems when a CD is closing during an image to CD operation then enable this option to try a different closing technique.
<b>Disable Tri-State Check Boxes</b>	Enabling this option changes the behavior of the partition selection check boxes so that you can select an extended partition (itself) as the source of a backup.
<b>PHYLock Settings</b>	
<p>PHYLock™ is an optional software component for Win NT/2K/XP that enables Image for Windows to maintain a consistent backup of an unlocked partition or volume. You can obtain PHYLock at the TeraByte Unlimited website by using the Free Software link. It should be noted that the consistency is based on a point in time. Although there is an attempt to pick a “clean” point in time, there is no guarantee that all programs, internal caches, and other processes are in a clean state. This is true of ALL backup software that is backing up a volume that is in use.</p> <p>If none of the usage options below are enabled then PHYLock will be used if it's installed.</p>	
<b>Disable Usage</b>	If you don't want to use PHYLock even if installed, enable this option.
<b>Use If Locking Fails</b>	Use PHYLock if a normal lock cannot be obtained.
<b>Use and Release Lock</b>	Attempt a normal lock then use PHYLock whether or not the lock was obtained. If a normal lock was obtained, it is unlocked after PHYLock is enabled.
<b>Volume Flush</b>	Attempts forcing an additional flush on the volume.
<b>Write Free Time (ms)</b>	This is the amount of time in milliseconds that there can be no updating of the volume before PHYLock is enabled. You should try to keep the value above 1250. The default is 4250.
<b>Cache Size (KB):</b>	This is the size of the internal cache in kilobytes used by PHYLock to maintain the data consistency. The default is 8192 (8MB).

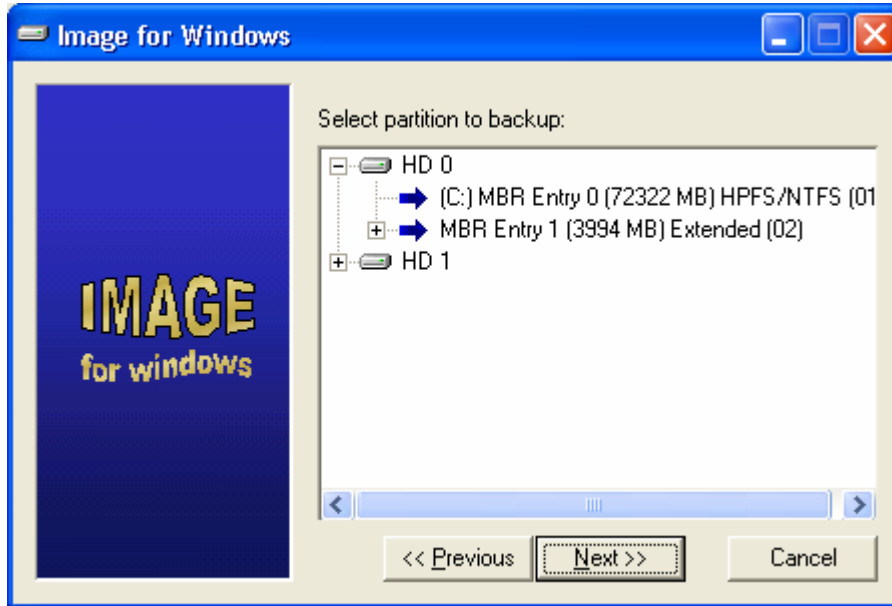
## Backing Up Your System



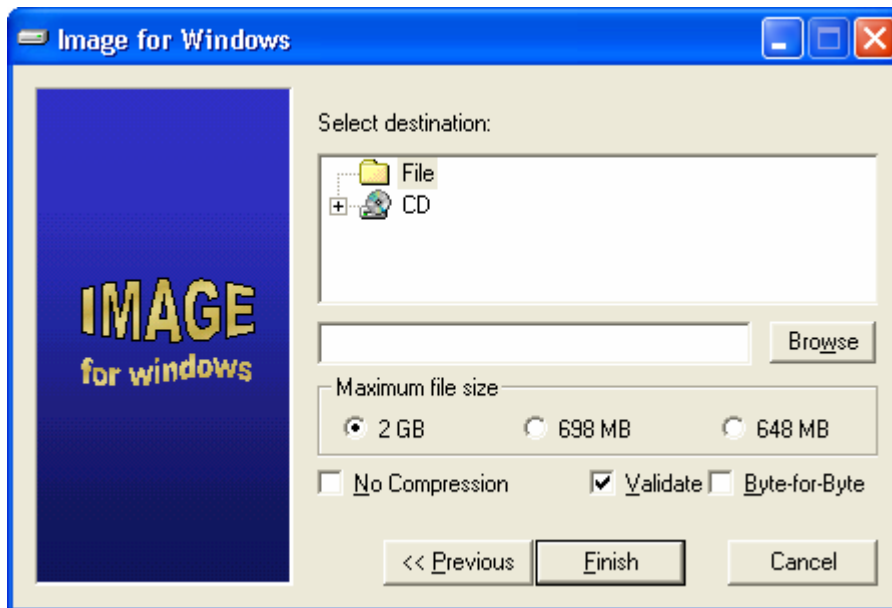
1. If you would like the partition being backed up to be locked then be sure to close any open files on the drive you are going to be backing up. If you are unable to obtain a lock, and you know the lock is not in use, you can continue or consider using Image for DOS or the PHYLock add-on – see settings for more details on PHYLock.

**NOTE:** Some virus protection software will prevent a drive from being locked, even when real-time protection is turned off. If you are not using PHYLock or Image for DOS, you may want to close the anti-virus software.

2. Open Image for Windows.
3. Make sure **Backup** is selected.
4. Click **Next**.
5. Place a check in the check box next to the partitions you want to back up and then click Next. If you only see a blank screen it's because you don't have administrative privileges. You should start the program by right clicking the icon and choosing "run as" and choose a user who has administrative privileges.



**NOTE:** The partition list is displayed below the drive (in the above example HD 0). The drive letter is shown at the beginning (C:), followed by a description (MBR Entry 0), size (72322 MB) file system type (NTFS), and the partition ID.



6. Select the destination.

**NOTE:** If you are saving the image to a file, do not save it to the same partition you are backing up unless you are using PHYLock. If you do, the restored partition will be in an inconsistent state.

7. Select the appropriate options for your backup.

8. Click **Finish**.

**NOTE:** If the validation of CDs/DVDs appears to hang it may be due to problems trying to read the media, try a slower speed.

## Backing Up the System Partition

If you attempt to backup the system partition, you will be warned that the partition can not be locked. You can ignore this warning and continue, however the only way you can be sure a partition being backed up is in a consistent state is by having it locked or by using Image for DOS.

If you are using Windows NT/2000/XP, you can use the PHYLock utility to maintain the consistency of the system partition to a "point in time."

## Deploying Your Image

Image does not change the SID of Windows NT/2K/XP systems. If you are using Image for deployment purposes and want to change the SID for WinNT/2K you should use the MS sysprep utility or you can download a free utility named NewSID,

You may want to set up the base machine so that the last partition ends at one track less than the actual end of the hard drive (around 8MB less) to leave room for different brands or models of the same size hard drive.

See the following for more information on how to prepare for deployment:

Windows XP:

*How to Prepare Images for Disk Duplication with Sysprep*

<http://www.microsoft.com/WINDOWSXP/pro/using/itpro/deploying/duplication.asp>

*Windows XP Professional How-to Articles for IT Pros*

<http://www.microsoft.com/windowsxp/pro/using/itpro/default.asp>

Windows 2000:

*Download for the Microsoft Windows 2000 Sysprep Tool*

<http://www.microsoft.com/windows2000/downloads/tools/default.asp>

Deploying MS Windows 2000 Professional and MS Office 2000 Using Sysprep

<http://www.microsoft.com/technet/treeview/default.asp?url=/TechNet/prodtechnol/windows2000pro/deploy/depopt/sysprep.asp>

Using Sysprep to Duplicate Disks

[http://www.microsoft.com/WINDOWS2000/techinfo/reskit/en/Deploy/dqcb\\_ins\\_izyl.htm](http://www.microsoft.com/WINDOWS2000/techinfo/reskit/en/Deploy/dqcb_ins_izyl.htm)

Windows NT:

Windows NT Workstation Deployment

<http://www.microsoft.com/ntworkstation/technicalresources/deployment/default.asp>

## Restoring Your System from a Backup

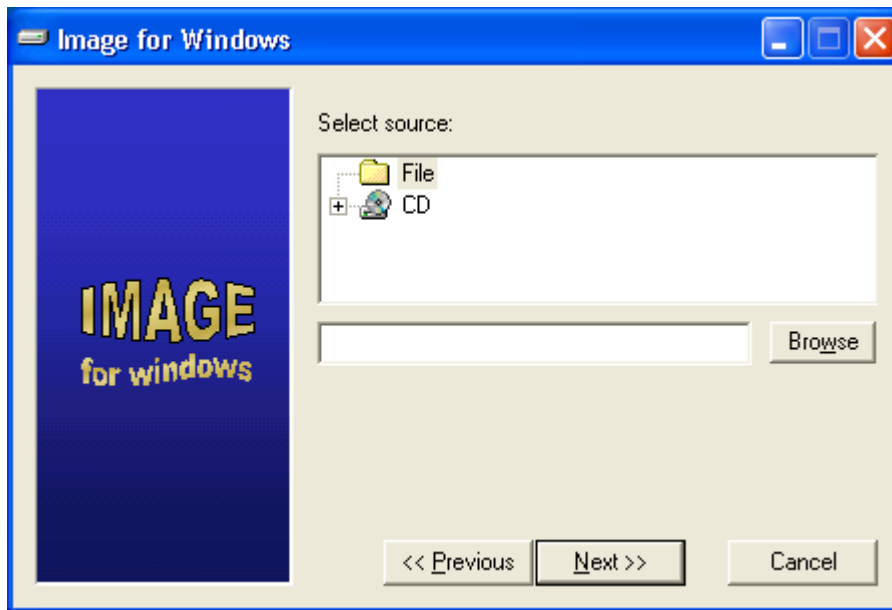
When you are restoring an image you cannot restore over the partition that contains the source image file. This is because the restore will overwrite the file system structures and the image file itself.

When you are booting a restore CD/DVD, make sure the other CD drives don't contain a disc, otherwise the wrong CD drive may be chosen. Additionally, the drive order under Windows may be different so you may need to use the interactive menu press pressing the spacebar when booting the CD/DVD.

1. Open Image for Windows.
2. Make sure **Restore** is selected.



3. Click **Next**.



1. Select the source of the backup and click **Next**. This will be the same as the destination you selected when you created the backup.
2. Select the destination to restore the partition and click **Next**. When you restore a partition the existing partition is automatically deleted and overwritten as part of the restore process.
3. Once the restore process completes, if you are asked to do so, reboot the computer.

**NOTE:** If you don't reboot when asked, the operating system will think the partition and file system is as it was before the restore. This could cause data corruption. You can override a command line restore with /RN but only if you are an advanced user and understand the potential ramifications of not rebooting.

## Running Image from the Command Line

You can run imagew.exe from the command line. Separate the command line options with spaces and enter in the order shown in the following examples. Use the /? for additional command line options not explained in the following section.

### Environment Variables

Environment variables are used with the command line interface only.

<b>IFW</b>	<p>Image for Windows uses this variable to supply most of its options. The format of the IFW environment variable is: IFW=option1;option2:value;... The options are given below:</p> <p><b>ATA</b> – Use this option to have the bootable CD/DVD attempt to directly access the IDE hard drive directly instead of using the system BIOS.</p> <p><b>IBXT</b> – When using the Burn Extra Track option you will not be prompted for the last CD during a restore. This option may not work with all CD or DVD drives.</p> <p><b>CDCMZ</b> – If you experience errors or problems when a CD is being closed then you may need to use this option.</p> <p><b>CDRS:speed</b> – Used to set the CD read speed. For example: CDRS:8 sets the read speed to 8x.</p> <p><b>CDWS:speed</b> – Used to set the CD write speed. For example: CDWS:8 sets the write speed to 8x. NOTE: If you are having problems burning a reliable CD, you may need to slow the write speed down by using this option.</p> <p><b>IAR:value</b> – Image Auto Response value. Set this optional value to Y or N to auto respond to 'Y'es or 'N'o prompts and error messages. You can use errorlevel in a batch file to determine if the operation was successful or not.</p> <p>To respond to the Unable to obtain a lock Abort/Ignore/Retry message, set the second character of the IAR option to either R, A, or I. For example, IAR:YI.</p> <p>NOTE: If you use the "R" setting, the program will appear to be imaging without making progress while it keeps trying to obtain the lock. You will need to click cancel to stop it. If you would like to only respond to the lock message then set the first character of IAR to something other than Y or N, for example "IAR:x". You can use errorlevel in a batch file to determine if the operation was successful or failed.</p>
------------	---

### Command line options

If you have created a batch file, you will probably want to start the process using "start /wait" followed by the imagew program.

```
start /wait imagew
```

To run the program as a different user, use the “runas” command under Win2K/XP to start the batch file.

```
runas /user:administrator imagew.exe [cmdline options]
```

You can also use the Scheduler, the Windows control panel utility that schedules tasks. With NT/2K/XP you may want to use something like SRVANY (included with the NT resource kit) and run it as a service under an appropriate profile.

Writing a compressed image to a file:

imagew /Ch# d:\filename.img	(no validation)	H = the source hard drive number from 0 to 7 # = the partition entry id
imagew /Ch#V d:\filename.img	(validation)	
imagew /Ch#VB d:\filename.img	(byte-for-byte validation)	

For most users the partition id will be a number from 1-4. Volumes will be a number formatted as 0xPVV where P is the extended partition and VV is the volume number in hexadecimal from 01 to FF.

If you're not sure what the partition or volume id is, run image without any parameters and choose create image. The screen that lists the partitions and volumes also will display the id in parentheses as a hexadecimal number. You should prefix that number with a 0x on the command line.

Writing an uncompressed image to a file:

imagew /Ch# /U d:\filename.img	(no validation)	H = the source hard drive number from 0 to 7 # = the partition entry id
imagew /Ch#V /U d:\filename.img	(validation)	
imagew /Ch#VB /U d:\filename.img	(byte-for-byte validation)	

Writing a compressed image to a CD drive:

imagew /Ch# /CDx	H = the source hard drive number from 0 to 7 # = the partition entry id The x after /CD is the CD drive number to use. Omit the number (/CD) to get a list of devices.
------------------	---

Writing an uncompressed image to a CD drive:

imagew /Ch# /U /CDx	H = the source hard drive number from 0 to 7 # = the partition entry id The x after /CD is the CD drive number to use. Omit the number (/CD) to get a list of devices.
---------------------	---



Limiting the file size on creation:

d:\filename;s	Replace the s after the ';' with 0 for 2GB, 1 for 698MB, or 2 for 648MB.
---------------	--

Directly accessing files on partitions:

h#:\filename	h = the hard drive number from 0 to 7. # = the partition entry id.
--------------	---

Restoring an image from a file:

When you do a command line restore, the restored partition will go to the same hard drive number and physical location on the drive as it was backed up from. If the partition was a volume and there is now no extended partition at that location, it will attempt to create the original extended partition. If it can't create the extended partition, it will be restored as a primary partition. If it was originally a primary partition and an extended partition now encompasses that location, it will be restored as a volume. If an existing partition or volume occupies the same starting location as the partition to be restored, a warning message will be issued before overwriting that partition or volume.

imagew /R d:\filename.img	no validation	Restores the image to the same hard drive and location on the hard drive that it was backed up from.
imagew /RV d:\filename.img	validation if needed	

Restoring an image from a CD:

imagew /R1 /CDx	The x after /CD is the CD drive number to use. Omit the number (/CD) to get a list of devices.  The optional 1 following the R specifies that the restore destination is the second hard drive (HD1)
-----------------	--

Running the Program from a batch file:

start /wait imagew /c00 d:\somefile	Because this is a Win32 program you must use the "start" command with the "/wait" switch as shown in the example.
--	---

Creating a bootable CD

As long as CDBOOT.F35 is in the working directory with imagew.exe, an independent bootable CD/DVD will be created when burning directory to a CD/DVD drive. However, the CDBOOT.F35 file will only be able to restore from an ATAPI CD drive on one of the IDE controllers. If you would like to restore from another device, you will need to create your

own diskette image with the appropriate ASPI drivers and autoexec.bat file to execute the image restore.

**NOTE:** This only applies when booting the CD/DVD created with CDBOOT.F35 -- you'll be able to restore from other CD-ROM drives under Windows.

## What is Shareware

Shareware distribution provides users with the opportunity to try software before buying it. If you try a Shareware program and continue using it, you are expected to register it. Individual programs differ on details; some request registration, others require it, and some specify a maximum trial period. When you register the software, you may receive anything from the right to continue using the software to an updated program with printed manual.

Shareware is a distribution method, not a type of software. The Shareware system makes fitting your needs easier, because you can try before you buy. Also, because the overhead is low, prices are low. Shareware has the ultimate money-back guarantee-if you don't use the product, you don't pay for it.

# TeraByte Unlimited (Trial-Use) License Agreement

If you are using the evaluation copy of the software you are bound by the following conditions.

## PLEASE READ THIS LICENSE AGREEMENT CAREFULLY

By using, copying, transmitting, distributing or installing all or any part of the TeraByte trial version computer software and documentation accompanying this License Agreement (the "Evaluation Software"), you agree to all of the terms and conditions of this License Agreement.

Please read the license terms and conditions below. **If you do not agree to all of the terms and conditions**, then do not use, copy, transmit, distribute, or install the trial version computer software and documentation accompanying this license Agreement.

TeraByte, Inc., dba TeraByte Unlimited ("TeraByte") and/or its suppliers own the Evaluation Software and its documentation, which are protected under applicable copyright, trade secrets, and other laws. Your rights and license to use the programs and the documentation are limited to the terms and subject to the conditions set forth below.

### 1. LICENSE:

#### (a) TRIAL USE IN YOUR OWN COMPUTER

(i) YOU MAY: use the Evaluation Software for evaluation purposes in your own computer, for a period not to exceed thirty (30) days after your first installation or use of the Evaluation Software. You may not re-install or additionally install the Evaluation Software for additional evaluation periods.

(ii) Not "Free Software". This Evaluation Software is not "free software", but a software copy with limited license rights, as set forth in this Agreement.

(iii) Temporary Evaluation Use Only. You may use this Evaluation Software without charge for a limited time only, and solely to decide whether to purchase a paid license for the software from TeraByte. If you wish to use the Evaluation Software after the thirty (30) day evaluation period, then you must purchase a Full Use license for the software from TeraByte. You can visit TeraByte's web site at [www.terabyteunlimited.com](http://www.terabyteunlimited.com), for further information.

(iv) NO CONTINUED USE WITHOUT REGISTRATION. Unregistered use of the Evaluation Software after the thirty (30) day trial period is an infringement of TeraByte's legal and equitable rights, including but not limited to copyright and trade secret rights, under U.S. and international laws.

#### (b) LIMITED DISTRIBUTION LICENSE

(i) IF YOU ARE AN INDIVIDUAL, YOU MAY: distribute copies of the Evaluation Software to your friends or associates, provided that you charge no fees nor request any donations for this service, and that you convey only a complete and unaltered copy of the original Evaluation Software files, in the exact form that they were downloaded from [www.terabyteunlimited.com](http://www.terabyteunlimited.com).

(ii) ALL OTHER DISTRIBUTION is allowed only under the terms set forth by TeraByte, if any at the [www.terabyteunlimited.com](http://www.terabyteunlimited.com) web site. TeraByte may, at its sole discretion, append a data record (such as VENDINFO or PAD) to the distribution files for the Evaluation Software, in which event such data record shall be automatically incorporated by reference. Any distribution satisfying all of the distribution requirements expressed at the web site or in that data record, if any, is hereby authorized; all other distribution requires TeraByte's advance written approval.

(iii) Each individual, and each vendor, wishing to distribute the Evaluation Software package must independently satisfy all terms of the limited distribution license.

(iv) You may make as many copies of this Evaluation Software as you need, for purposes of the limited distribution permitted in this Agreement.

(v) TERABYTE RESERVES THE RIGHT TO RETRACT OR CHANGE ANY OR ALL OF THE ABOVE DISTRIBUTION RIGHTS AT ANY TIME, FOR ANY OR NO REASON.

#### (c) YOU MAY NOT:

(i) permit others to use the Evaluation Software unless they are properly licensed by TeraByte, either under this Agreement or another agreement from TeraByte;

(ii) modify, translate, reverse engineer, decompile, disassemble, or create derivative works based on, the Evaluation Software;

(iii) copy the Evaluation Software except as expressly permitted above;

(iv) distribute the Evaluation Software, bundle it with other products, rent, lease, sell, grant a security interest in, or otherwise transfer rights to, or possession of, the Evaluation Software or any copy thereof, except as may be expressly provided in this Agreement;

(v) remove or alter any proprietary notices, labels or legends on any copy of the Evaluation Software; or

(vi) ship or transmit (directly or indirectly) any copies of the Evaluation Software or their media, or any direct product thereof, to any country or destination prohibited by the United States Government.

(d) RESERVATION OF RIGHTS. All rights and licenses not expressly granted by TeraByte in this Agreement are entirely and exclusively reserved to TeraByte.

2. TERM AND TERMINATION: This Agreement shall remain effective until this Agreement is terminated, provided that in no event shall your evaluation rights hereunder extend beyond the thirty (30) day period set forth in Section 1 above. You may terminate it at any time by destroying the distribution media together with all of your copies of the Evaluation Software in any form. This Agreement will also automatically terminate, without notice, if you fail to comply fully with any term or condition of this Agreement, or if your normal business operations are disrupted or discontinued for more than thirty days by reason of insolvency, bankruptcy, receivership, or business termination. Upon termination of this Agreement, you must destroy all copies of the Evaluation Software in any form.

3. OWNERSHIP AND CONFIDENTIAL INFORMATION: TeraByte or its licensors own the Evaluation Software under copyright, trade secret and all other laws that may apply. All product names, designs, and logos associated with the Evaluation Software are trademarks of TeraByte. The source code of the Evaluation Software and all information regarding the design, structure or internal operation of the Evaluation Software are valuable trade secrets of TeraByte or third parties with which TeraByte has licensing arrangements ("Confidential Information"), provided however, that "Confidential Information" shall not include information which otherwise would be Confidential Information to the extent that such information was publicly known or otherwise known to you previously to the time of disclosure, which subsequently became known through no act or omission by you, or which otherwise became known to you other than through disclosure by TeraByte. You shall not sell, transfer, publish, disclose, display or otherwise permit access to any Confidential Information by any third party, nor may you use any of the Confidential Information, except strictly as part of the Evaluation Software in the form originally distributed by TeraByte.

4. LIMITED WARRANTY: THE EVALUATION SOFTWARE IS PROVIDED ENTIRELY "AS-IS". TERABYTE MAKES NO WARRANTIES, EXPRESSED OR IMPLIED, WITH RESPECT TO THE EVALUATION SOFTWARE, ITS MERCHANTABILITY, OR ITS FITNESS FOR ANY PARTICULAR PURPOSE. TERABYTE DOES NOT WARRANT THAT THE EVALUATION SOFTWARE WILL MEET YOUR REQUIREMENTS OR THAT THE OPERATION OF THE EVALUATION SOFTWARE WILL BE UNINTERRUPTED OR ERROR FREE. YOU ASSUME FULL RESPONSIBILITY FOR SELECTING AND USING THE EVALUATION SOFTWARE, AND THAT IF YOU USE THE EVALUATION SOFTWARE IMPROPERLY OR AGAINST INSTRUCTIONS, YOU CAN CAUSE DAMAGE TO YOUR FILES, SOFTWARE, DATA OR BUSINESS. THE ENTIRE RISK AS TO THE QUALITY AND PERFORMANCE OF THE EVALUATION SOFTWARE IS BORNE BY YOU. THIS DISCLAIMER OF WARRANTY CONSTITUTES AN ESSENTIAL PART OF THE AGREEMENT. Some jurisdictions do not allow exclusions of an implied warranty, so this disclaimer may not apply to you and you may have other legal rights that vary by jurisdiction.

5. LIMITATION OF LIABILITY. ANY LIABILITY OF TERABYTE WILL BE LIMITED EXCLUSIVELY TO PRODUCT REPLACEMENT OR REFUND OF PURCHASE PRICE. IN ADDITION, IN NO EVENT WILL TERABYTE, NOR ANY OTHER PERSON OR ENTITY INVOLVED IN THE CREATION, PRODUCTION, OR DELIVERY OF THE EVALUATION SOFTWARE, BE LIABLE FOR INDIRECT, INCIDENTAL, CONSEQUENTIAL OR PUNITIVE DAMAGES WHATSOEVER, INCLUDING WITHOUT LIMITATION LOSS OF INCOME, USE OR INFORMATION, RELATING EITHER TO THE USE OF THE EVALUATION SOFTWARE, OR YOUR RELATIONSHIP WITH TERABYTE, EVEN IF TERABYTE HAS BEEN ADVISED IN ADVANCE OF THE POSSIBILITY OF SUCH DAMAGES OR CLAIMS. Any suit or other legal action relating in any way to this Agreement or to the Evaluation Software must be filed or commenced no later than one (1) year after it accrues. You may also have other rights which vary from state to state.

6. HIGH RISK ACTIVITIES. The Evaluation Software is not fault-tolerant and is not designed, manufactured or intended for use on equipment or software running in hazardous environments requiring fail-safe performance, including but not limited to the operation of nuclear facilities, aircraft navigation or communication systems, air traffic control, direct life support machines, or weapons systems, in which the failure of the Evaluation Software could contribute to death, personal injury, or severe physical or environmental damage ("High Risk Activities"). TERABYTE AND ITS SUPPLIERS SPECIFICALLY DISCLAIM ANY EXPRESS OR IMPLIED WARRANTY OF FITNESS OF THE EVALUATION SOFTWARE FOR HIGH RISK ACTIVITIES. TERABYTE DOES NOT AUTHORIZE USE OF THE EVALUATION SOFTWARE FOR ANY HIGH RISK ACTIVITY. YOU AGREE TO DEFEND AND INDEMNIFY TERABYTE, AND HOLD TERABYTE HARMLESS, FROM AND AGAINST ANY AND ALL CLAIMS, ACTIONS, LOSSES, COSTS JUDGMENTS AND DAMAGES OF ANY KIND IN CONNECTION WITH USE IN RELATION TO ANY HIGH RISK ACTIVITY OF ANY COPY OF THE EVALUATION SOFTWARE RELATING TO THIS LICENSE.

7. RESTRICTED RIGHTS - COMMERCIAL COMPUTER SOFTWARE. The parties acknowledge and agree that: (a) any and all products covered by this Agreement are, and shall be, deemed "commercial computer software" for all purposes in relation to U.S. government acquisition laws, rules and regulations, and (b) all use, duplication and disclosure by, for, or on behalf of the U.S. Government is subject to all conditions, limitations and restrictions applicable to "commercial computer software" as set forth in FAR section 12.212 and in DFAR sections 227.7202-1, 227.7202-3, and 227.7202-4.

## 8. GENERAL.

(a) ENTIRE AGREEMENT. This Agreement constitutes the entire agreement between you and TeraByte in regard to the subject matter herein, and supersedes all previous and contemporaneous agreements, proposals and communications, written or oral between you and TeraByte. No amendment of this Agreement shall be effective unless it is in writing and signed by duly authorized representatives of both parties.

(b) NON-WAIVER. Waiver by TeraByte of any violation of any provision of this License shall not be deemed to waive any further or future violation of the same or any other provision.

(c) LAW AND JURISDICTION. This License and any dispute relating to the Evaluation Software or to this License shall be governed by the laws of the United States and the laws of the State of Nevada, without regard to U.S. or Nevada choice of law rules. You agree and consent that jurisdiction and proper venue for all claims, actions and proceedings of any kind relating to TeraByte or the matters in this License shall be exclusively in courts located in Las Vegas, Nevada. If a court with the necessary subject matter jurisdiction over a given matter cannot be found in Las Vegas, then jurisdiction for that matter shall be exclusively in a court with the proper jurisdiction as close to Las Vegas as possible, and within Nevada if possible.

(d) SEVERABILITY. If any part or provision of this License is held to be unenforceable for any purpose, including but not limited to public policy grounds, then you agree that the remainder of the License shall be fully enforceable as if the unenforceable part or provision never existed.

(e) NON-ASSIGNMENT. You may not assign this License without the prior written consent of TeraByte, except as part of a sale of all or substantially all of the assets of your business.

(f) NO THIRD PARTY BENEFICIARIES. There are no third party beneficiaries of any promises, obligations or representations made by TeraByte herein.

(g) HEIRS AND ASSIGNS. This Agreement shall be binding on and shall inure to the benefit of the heirs, executors, administrators, successors and assigns of the parties hereto, but nothing in this paragraph shall be construed as a consent by TeraByte to any assignment of this agreement except as provided hereinabove.

(h) SURVIVAL. The provisions of paragraphs 1(a)(iv), 1(c)(ii) and 3 of this Agreement shall survive any termination or expiration of this Agreement.

# TeraByte Unlimited (Full-Use) License Agreement

If you are using or upgrading an existing fully licensed copy of the software, the following license applies to you:

## PLEASE READ THIS LICENSE AGREEMENT CAREFULLY

You should carefully read the following terms and conditions before applying the registration code(s) you received from TeraByte Unlimited or an authorized TeraByte Unlimited distributor (the "Registration Code(s)"). The Registration Code(s) will convert your copy of the TeraByte Unlimited software for which it was created, from a limited-time evaluation version into a fully paid, fully registered version (the "Licensed Software").

**If you do not agree to all of the terms and conditions** of this License Agreement as set forth below, then: (a) do not apply the Registration Code(s) to any copy of any TeraByte Unlimited software, and (b) in addition, if you paid TeraByte Unlimited or an authorized TeraByte Unlimited distributor for a package consisting of one or more Registration Codes, you may return the complete package of Registration Codes, completely unused, within thirty (30) days after purchase, for a full refund of your payment.

TeraByte Inc., dba TeraByte Unlimited ("TeraByte") and/or its suppliers own the Licensed Software and its documentation, which are protected under applicable copyright, trade secrets, and other laws. Your rights and license to use the programs and the documentation are limited to the terms and subject to the conditions set forth below.

### 1. LICENSE:

#### (a) YOU MAY:

- (i) if you paid for a single copy license, use the Licensed Software on a single computer;
- (ii) if you paid for a multiple copy license, make additional copies of the Licensed Software, up to the number of copies licensed herein, provided that each copy of the Licensed Software provided or made under this Agreement may be used on only one computer at any one time;
- (iii) physically transfer any copy of the Licensed Software from one computer to another, provided that that copy is used on only one computer at a time, and that you remove any and all copies from the computer from which the programs are transferred;
- (iv) make a copy of the Licensed Software solely for purposes of backup;
- (v) create as many "per computer" Portable Image Sets (defined in paragraph 2 below), and distribute such per computer Portable Image Sets, as described in paragraph 2(a) below; and
- (vi) if you paid for additional "Portable Image Set" or "Network Distribution Image" license rights, create and distribute additional Portable Image Sets and/or Network Distribution Images as described in paragraphs 2(b) and 3 below, respectively.

PROVIDED IN ALL CASES THAT all copyright and other proprietary and Federal acquisition notices, as included by TeraByte with the Licensed Software, are fully and accurately reproduced by you on any and all copies of the Licensed Software.

#### (b) YOU MAY NOT:

- (i) permit others to use the Licensed Software unless they are properly licensed by TeraByte, either under this Agreement or another agreement from TeraByte;
- (ii) permit concurrent use of any copy of the Licensed Software;
- (iii) modify, translate, reverse engineer, decompile, disassemble, or create derivative works based on, the Licensed Software;
- (iv) copy the Licensed Software except as expressly permitted above;
- (v) rent, lease, grant a security interest in, or otherwise transfer rights to, or possession of, the Licensed Software or any copy thereof;
- (vi) remove or alter any proprietary notices, labels or legends on any copy of the Licensed Software; or

(vii) ship or transmit (directly or indirectly) any copies of the Licensed Software or their media, or any direct product thereof, to any country or destination prohibited by the United States Government.

(c) **RESERVATION OF RIGHTS.** All rights and licenses not expressly granted by TeraByte in this Agreement are entirely and exclusively reserved to TeraByte.

2. **PORTABLE IMAGE SETS.** The Licensed Software may be used, among other things, to create one or more disk partition images, where each such image is stored in bootable form on one or more units of portable memory media such as CD-ROMs or DVDs ("Portable Image Sets"). Each Portable Image Set includes a copy of part of the Licensed Software, the use of which, by you or any recipient, is subject to all of the restrictions of 1(b) above. Your ability to create and distribute Portable Image Sets is based on the type of license you purchased, as indicated on your sales receipt or comparable sales documentation received by you from Terabyte Unlimited:

(a) **"PER COMPUTER" LICENSE:** Each license of the Licensed Software includes, without extra charge, a "per computer" license to create and keep an unlimited number of Portable Image Sets for the number of computers corresponding to the number of copies of the Licensed Software indicated on that license, provided that those Portable Image Sets may not be distributed to, or used in any manner with, any computers except or in addition to those covered by that license. For example, if you purchased a license for five (5) copies of the Licensed Software, then you may create and keep an unlimited number of Portable Image Sets for the five (5) computers on which you install those copies, but you may not distribute those Portable Image Sets to, or use them with, any other or additional computer or computers.

(b) **"PER PORTABLE IMAGE SET" LICENSE.** If, in addition to the standard License Software license, you purchased a "Portable Image Set" license, then you may make an unlimited number of Portable Image Sets on any computer covered by that standard Licensed Software license, and you may use each such set to distribute the image it contains, up to the total number of "distribution computers" indicated on that license. Once you distribute an image from a Portable Image Set into any computer, that computer becomes one of the "distribution computers" for purposes of that Portable Image Set license, and it must be counted towards the total number of "distribution computers" under that license for each subsequent image distribution via any Portable Image Set under that license, whether or not that computer receives an image under that subsequent distribution.

For example, if you purchased a Portable Image Set license to make Portable Image Sets for distribution to up 300 computers: You may make an unlimited number of Portable Image Sets, as long as the total number of computers receiving images under any and all Portable Image Sets does not exceed 300. You may not, however, distribute one Portable Image Set to one group of 300 computers, and then distribute a second Portable Image Set to a group of 300 computers that includes only 150 computers from the first group, because this would result in overall distribution to 450 computers, thus exceeding the 300 computer license. You may not make more than one copy of each Portable Image Set, except for a single copy per set strictly for backup and archival purposes. For the right to distribute Portable Image Sets to greater numbers of computers, you will need to purchase additional license rights from Terabyte Unlimited.

3. **"NETWORK DISTRIBUTION IMAGE" LICENSE.** If, in addition to the standard Licensed Software license, you purchased a "Network Distribution Image" license, then you have additional license rights to perform restores across the computers in the network covered by the license. Such restores may be performed by distributing the partition images that you create using the Licensed Software ("Network Distribution Images"), together with copies of the portion of the Licensed Software needed to perform the restore ("Restore Software"), as follows:

(a) Each partition image created using the Licensed Software, when stored in a form distributable via a computer network, is a "Network Distribution Image."

(b) You may create an unlimited number of Network Distribution Images on any computer covered by your standard Licensed Software license, and you may use and distribute each such Network Distribution Image, together with the Restore Software, as described in (c) below, to perform restores for up to the total number of "distribution computers" indicated on your Network Distribution Image license.

(c) For each restore, you may distribute the Network Distribution Image, together with the Restore Software, only through a single server computer ("distribution server") attached to a computer network (the "distribution network"), and you may distribute only one copy each of the Network Distribution Image and the Restore Software to each distribution computer. Note that: (i) The distribution server needs to be one of the computers covered by your standard license to use the Licensed Software, and (ii) the Restore Software may only be used in conjunction with the Network Distribution Images to perform the network restores described in this Section 3, and may not be kept installed in the distribution computers after any restore is completed, nor used for any purpose not expressly described in this Section 3; if you wish to acquire greater license rights to use the Licensed Software, you will need to purchase additional license rights from Terabyte Unlimited.

(d) Once you distribute a Network Distribution Image or the Restore Software from the distribution server to any computer on the distribution network, that computer becomes one of the "distribution computers" for purposes of your Network Distribution Image license, and it must be counted towards the total number of "distribution computers" under that license for each subsequent distribution via any Network Distribution under that license, whether or not that computer receives an image under that subsequent distribution.

For example, if you purchased a Network Distribution Image license to make Network Distribution Images for distribution to up 300 distribution computers: You may make an unlimited number of Network Distribution Images, as long as the total



number of computers receiving any and all Network Distribution Images does not exceed 300. You may not, however, distribute one Network Distribution Image or copies of the Restore Software to one group of 300 computers, and then distribute a second Network Distribution Image and copies of the Restore Software to a group of 300 computers that includes only 150 computers from the first group, because this would result in overall distribution to 450 computers, thus exceeding the 300 computer license. You may not make more than one copy of each Network Distribution Image, except for a single copy per set strictly for backup and archival purposes. For the right to distribute Network Distribution Images to greater numbers of computers, you will need to purchase additional license rights from TeraByte Unlimited.

4. **TERM AND TERMINATION:** This Agreement, and your license rights hereunder, remain effective until this Agreement is terminated. You may terminate it at any time by destroying the distribution media together with all of your copies of the Licensed Software in any form. This Agreement will also automatically terminate, without notice, if you fail to comply fully with any term or condition of this Agreement, or if your normal business operations are disrupted or discontinued for more than thirty days by reason of insolvency, bankruptcy, receivership, or business termination. Upon termination of this Agreement, you must destroy all copies of the Licensed Software in any form.

5. **OWNERSHIP AND CONFIDENTIAL INFORMATION:** TeraByte or its licensors own the Licensed Software under copyright, trade secret and all other laws that may apply. All product names, designs, and logos associated with the Licensed Software are trademarks of TeraByte. The source code of the Licensed Software and all information regarding the design, structure or internal operation of the Licensed Software are valuable trade secrets of TeraByte or third parties with which TeraByte has licensing arrangements ("Confidential Information"), provided however, that "Confidential Information" shall not include information which otherwise would be Confidential Information to the extent that such information was publicly known or otherwise known to you previously to the time of disclosure, which subsequently became known through no act or omission by you, or which otherwise became known to you other than through disclosure by TeraByte. You shall not sell, transfer, publish, disclose, display or otherwise permit access to any Confidential Information by any third party, nor may you use any of the Confidential Information, except strictly as part of the Licensed Software in the form originally distributed by TeraByte.

6. **LIMITED WARRANTY:** TeraByte Unlimited warrants that for a period of thirty (30) days from the date of purchase, the Licensed Software will perform in conformity with the user documentation supplied by TeraByte, provided that your EXCLUSIVE REMEDY under this warranty shall be to return the Licensed Software to TeraByte in exchange for repair, replacement, or a full refund of your purchase price (at TeraByte's option) within forty-five (45) days after the date of purchase. In addition, the above warranty does not apply to the extent that any failure of the licensed program to perform as warranted is caused by the licensed program being (a) not used in accordance with the user documentation, or (b) modified by any person other than authorized TeraByte personnel. EXCEPT FOR THE EXPRESS WARRANTY GRANTED IMMEDIATELY ABOVE, TERABYTE MAKES NO WARRANTIES, EXPRESSED OR IMPLIED, WITH RESPECT TO THE LICENSED SOFTWARE, ITS MERCHANTABILITY, OR ITS FITNESS FOR ANY PARTICULAR PURPOSE. YOU ACKNOWLEDGE AND AGREE THAT YOU HAD FULL OPPORTUNITY TO USE AND TEST THE LICENSED SOFTWARE BEFORE PURCHASE. TERABYTE DOES NOT WARRANT THAT THE LICENSED SOFTWARE WILL MEET YOUR REQUIREMENTS OR THAT THE OPERATION OF THE LICENSED SOFTWARE WILL BE UNINTERRUPTED OR ERROR FREE. YOU ASSUME FULL RESPONSIBILITY FOR SELECTING AND USING THE LICENSED SOFTWARE, AND THAT IF YOU USE THE LICENSED SOFTWARE IMPROPERLY OR AGAINST INSTRUCTIONS, YOU CAN CAUSE DAMAGE TO YOUR FILES, SOFTWARE, DATA OR BUSINESS. THE ENTIRE RISK AS TO THE QUALITY AND PERFORMANCE OF THE LICENSED SOFTWARE IS BORNE BY YOU. THIS DISCLAIMER OF WARRANTY CONSTITUTES AN ESSENTIAL PART OF THE AGREEMENT. Some jurisdictions do not allow exclusions of an implied warranty, so this disclaimer may not apply to you and you may have other legal rights that vary by jurisdiction.

7. **LIMITATION OF LIABILITY.** ANY LIABILITY OF TERABYTE WILL BE LIMITED EXCLUSIVELY TO PRODUCT REPLACEMENT OR REFUND OF PURCHASE PRICE. IN ADDITION, IN NO EVENT WILL TERABYTE, NOR ANY OTHER PERSON OR ENTITY INVOLVED IN THE CREATION, PRODUCTION, OR DELIVERY OF THE LICENSED SOFTWARE, BE LIABLE FOR INDIRECT, INCIDENTAL, CONSEQUENTIAL OR PUNITIVE DAMAGES WHATSOEVER, INCLUDING WITHOUT LIMITATION LOSS OF INCOME, USE OR INFORMATION, RELATING EITHER TO THE USE OF THE LICENSED SOFTWARE, OR YOUR RELATIONSHIP WITH TERABYTE, EVEN IF TERABYTE HAS BEEN ADVISED IN ADVANCE OF THE POSSIBILITY OF SUCH DAMAGES OR CLAIMS. Any suit or other legal action relating in any way to this Agreement or to the Licensed Software must be filed or commenced no later than one (1) year after it accrues. You may also have other rights which vary from state to state.

8. **HIGH RISK ACTIVITIES.** The Licensed Software is not fault-tolerant and is not designed, manufactured or intended for use on equipment or software running in hazardous environments requiring fail-safe performance, including but not limited to the operation of nuclear facilities, aircraft navigation or communication systems, air traffic control, direct life support machines, or weapons systems, in which the failure of the Licensed Software could contribute to death, personal injury, or severe physical or environmental damage ("High Risk Activities"). TERABYTE AND ITS SUPPLIERS SPECIFICALLY DISCLAIM ANY EXPRESS OR IMPLIED WARRANTY OF FITNESS OF THE LICENSED SOFTWARE FOR HIGH RISK ACTIVITIES. TERABYTE DOES NOT AUTHORIZE USE OF THE LICENSED SOFTWARE FOR ANY HIGH RISK ACTIVITY. YOU AGREE TO DEFEND AND INDEMNIFY TERABYTE, AND HOLD TERABYTE HARMLESS, FROM AND AGAINST ANY AND ALL CLAIMS, ACTIONS, LOSSES, COSTS JUDGMENTS AND DAMAGES OF ANY KIND IN CONNECTION WITH USE IN RELATION TO ANY HIGH RISK ACTIVITY OF ANY COPY OF THE LICENSED SOFTWARE RELATING TO THIS LICENSE.

9. **RESTRICTED RIGHTS - COMMERCIAL COMPUTER SOFTWARE.** The parties acknowledge and agree that: (a) any and all products covered by this Agreement are, and shall be, deemed "commercial computer software" for all purposes in relation to U.S. government acquisition laws, rules and regulations, and (b) all use, duplication and disclosure by, for, or on behalf of the U.S. Government is subject to all conditions, limitations and restrictions applicable to "commercial computer software" as set forth in FAR section 12.212 and in DFAR sections 227.7202-1, 227.7202-3, and 227.7202-4.

## 10. GENERAL.

(a) **ENTIRE AGREEMENT.** This Agreement constitutes the entire agreement between you and TeraByte in regard to the subject matter herein, and supersedes all previous and contemporaneous agreements, proposals and communications, written or oral between you and TeraByte. No amendment of this Agreement shall be effective unless it is in writing and signed by duly authorized representatives of both parties.

(b) **NON-WAIVER.** Waiver by TeraByte of any violation of any provision of this License shall not be deemed to waive any further or future violation of the same or any other provision.

(c) **LAW AND JURISDICTION.** This License and any dispute relating to the Licensed Software or to this License shall be governed by the laws of the United States and the laws of the State of Nevada, without regard to U.S. or Nevada choice of law rules. You agree and consent that jurisdiction and proper venue for all claims, actions and proceedings of any kind relating to TeraByte or the matters in this License shall be exclusively in courts located in Las Vegas, Nevada. If a court with the necessary subject matter jurisdiction over a given matter cannot be found in Las Vegas, then jurisdiction for that matter shall be exclusively in a court with the proper jurisdiction as close to Las Vegas as possible, and within Nevada if possible.

(d) **SEVERABILITY.** If any part or provision of this License is held to be unenforceable for any purpose, including but not limited to public policy grounds, then you agree that the remainder of the License shall be fully enforceable as if the unenforceable part or provision never existed.

(e) **NON-ASSIGNMENT.** You may not assign this License without the prior written consent of TeraByte, except as part of a sale of all or substantially all of the assets of your business.

(f) **NO THIRD PARTY BENEFICIARIES.** There are no third party beneficiaries of any promises, obligations or representations made by TeraByte herein.

(g) **HEIRS AND ASSIGNS.** This Agreement shall be binding on and shall inure to the benefit of the heirs, executors, administrators, successors and assigns of the parties hereto, but nothing in this paragraph shall be construed as a consent by TeraByte to any assignment of this agreement except as provided hereinabove.

(h) **SURVIVAL.** The provisions of paragraphs 1(b)(iii) and 5 of this Agreement shall survive any termination or expiration of this Agreement.

<p><b>Image for Windows – Order Form</b></p> <p>Text version in file REGISTER.TXT (see web site for additional pricing information)</p> <p>Send to:  TeraByte Unlimited  1350 Town Center Dr. #1049  Las Vegas, NV 89144</p>			
Registration Name:		Date:	
Mailing Address:		Phone #:	
		Phone #:	
		Fax #:	
E-mail Address:		PC Brand/CPU Type:	
Shipping Address:			
		Primary OS:	
How did you learn about Image for Windows?			
<b>Description</b>	<b>Unit Price</b>	<b>Qty</b>	<b>Extended Price</b>
Image for Windows* *Image for DOS is included with your purchase	\$26.98		\$
Portable Image Set/Network Distribution Image (25 Distribution Computers)	\$175.00		\$
Portable Image Set/Network Distribution Image (50 Distribution Computers)	\$255.00		\$
Portable Image Set/Network Distribution Image (100 Distribution Computers)	\$377.00		\$
Portable Image Set/Network Distribution Image (200 Distribution Computers)	\$572.00		\$
Sub-Total			\$
Shipping and Handling Fees for orders not sent TO YOU via e-mail add \$9.95			\$
Nevada Residents add applicable sales tax			\$
TOTAL CHECK OR MONEY ORDER ENCLOSED*			\$

**Check or Money Order must be drawn on a U.S. bank in U.S. Dollars.**

If you do not have a US Checking account, you can send an international postal money order or have your bank issue a check on a U.S. bank in U.S. Dollars. Be sure to send this order form whichever method you choose.

ε Check mailed separately. (Please ask your bank to include your name on the memo line of the check.)