

SpeedLaunch

Copyright © 2003

geakware
www.geakware.com

What Is SpeedLaunch?

SpeedLaunch is a utility for your Palm OS ® handheld that was designed to give you quick access to the applications you use most. SpeedLaunch allows you to launch up to 40 programs using only your Palm's four hardware buttons and your finger or stylus. Press... tap... launched!

Requirements

- Any Palm Hardware
- Palm OS ® 5.0 or greater

Configuring SpeedLaunch

SpeedLaunch is disabled when it is first installed. When SpeedLaunch is disabled, none of the settings are visible (Figure 1) and your Palm's hardware buttons function normally. To enable SpeedLaunch's functionality, select **Enabled** from the drop down list found on the right-hand side of the title bar.

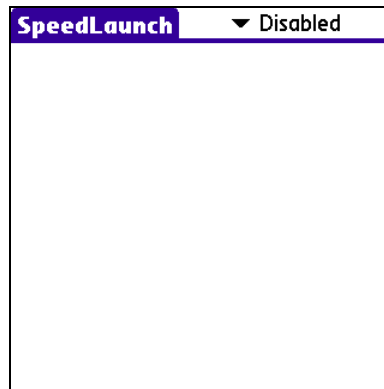






Figure 1 - Disabled

Once SpeedLaunch has been enabled, you will see the screen in Figure 2. This is the main application screen that allows you to select which programs are launched by each of the four hardware buttons.



Figure 2 - Enabled

At the top of the screen are four icons representing your Palm's four hardware buttons. From left to right, they are:

1.  *Date Book*
2.  *Address*
3.  *To Do*
4.  *Memo*

Simply press the button you wish to configure or tap its associated icon. The currently selected button will turn green. Once you have selected the button you wish to configure, you can select the applications it will launch from the list at the bottom of the screen, which is a complete list of the programs installed on your Palm.

An application can be selected or deselected by tapping it. A checkmark will appear to the left of the selected application's icon (Figure 3). Tapping the program a second time will deselect it and remove the checkmark. You may also use the 5-way navigator or Jog Dial (if equipped) to select or deselect an application.

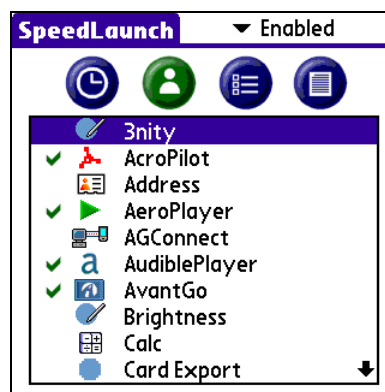


Figure 3 – Selected Applications

Additional features can be configured on the preferences screen (Figure 4). To view the preferences screen, select **Preferences** from the **Options** menu.

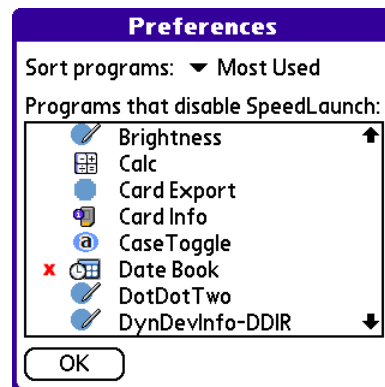


Figure 4 - Preferences Screen

The **Sort programs** option specifies how applications are sorted in the launch window. Applications can be sorted alphabetically, by most recent, or by most used.

Some 3rd-party applications, such as games, make use of the hardware buttons. The **Programs that disable SpeedLaunch** option allows you to specify which programs should prevent the launch window from being displayed. This allows these programs to continue to use the hardware buttons without displaying the launch window. Applications in this list can be selected or deselected by tapping them. An X will appear to the left of the selected application's icon.

Tapping the program a second time will deselect it and remove the X. You may also use the 5-way navigator or Jog Dial (if equipped) to select or deselect an application.

Launching Applications

With SpeedLaunch, each hardware button can launch up to 10 applications. The first press of a hardware button will display the launch window shown in Figure 5. The launch window allows you to launch one of the 9 applications assigned to the button by SpeedLaunch. A second press of the hardware button will dismiss the launch window and launch the default application assigned to the button through your Palm's preferences. While the launch window is displayed, you may also press any of the other hardware buttons to launch its default application. Tap the **Close** button to dismiss the launch window without launching a program.



Figure 5 – Launch Window

Registering SpeedLaunch

If you have not yet purchased a registration key for SpeedLaunch, you may do so at www.geakware.com or www.pdagreen.com.

When ordering, you will be asked to provide your Palm HotSync ID, which is used to generate your registration key. You can find your HotSync ID by starting SpeedLaunch and selecting **Register** from the **Options** menu. Your HotSync ID is the value in the **Name** field. Be sure to copy this value exactly as it appears on this screen. Any variation in spelling, capitalization or spacing will result in an invalid registration key.

If you have already purchased a registration key, geakware would like to thank you. We appreciate your business and hope you enjoy using SpeedLaunch.

Once you have obtained your registration key, select **Register** from the **Options** menu to view the registration dialog. If your software has expired, you will see the registration dialog every time you start the application. Enter your registration key in the field provided and press the **Register** button. Your software will now be registered.

Support

Should you encounter a problem while using SpeedLaunch, please submit the details to support@geakware.com. Include information about your Palm ® OS device, such as manufacturer, model, OS version and any applications that you feel may be conflicting with SpeedLaunch. We will make every effort to address your problem in a timely fashion.

Suggestions for improvements to SpeedLaunch are welcome and may be submitted to support@geakware.com.

Legal

While geakware makes every effort to produce high quality software, this software is not guaranteed to be free of defects. Additionally, no warranties are made as to this software's performance, merchantability or fitness for a particular purpose.

This software is provided "as is" and you use the software at your own risk. Should this software prove defective, you assume the cost of all losses, including, but not limited to, any necessary servicing, repair or correction of any property involved.

The source code for this software is owned exclusively by geakware and may not be reverse engineered, de-compiled or changed in any way.

Your purchase of this software gives you license to use the software on only one Palm OS ® device. Your use of this software indicates acceptance of these terms.