

The J.E.C. File Viewer

The File Viewer is designed to be able to display files of a size greater than the 64k bytes limit in notepad.

The File Viewer may be used over a network by creating a ini-file in each users Windows directory. If there is a ini file (called **fileview.ini**) in the Windows directory then FileView will use that ini-file. If it does not find one there then it will use the ini-file from the directory where **FileView.exe** resides (and create it if it doesnt exist).. So to use a shared copy all you need to do is copy the **fileview.ini** file into the Windows directory for each user.

The File Viewer keeps information in the ini-file for the window size and position, font used, all configuration options selected and search details.

Distribution: J.E.C. File Viewer may be distributed freely under the conditions in the readme.txt file.

The J.E.C. File Viewer is Copyright (C) 1994 Michael Taylor, All Rights Reserved

The Install and Un-Install program is a product called Freeman Installer & Uninstaller which is Copyright (C) 1994 Ka lok Tong, All Rights Reserved

Features

The File Viewer has the following features

- Displays files greater than 64k bytes in size
- Copy to clipboard
- Displays multiple files
- Search/Find using Regular Expressions
- Start an editor on the file being viewed
- Allows multiples copies to run (multiple instances)

Contents for File Viewer Help

[J.E.C. File Viewer Overview](#)

[Features](#)

[Regular Expressions](#)

[Usage](#)

[Configuration Dialog](#)

[Un-Installing](#)

[Keyboard Definitions](#)

Regular Expressions

A regular expression is formed by stringing together characters with or without operators. The simplest regular expressions are strings of text characters with no operators at all:

apple
orange

These two regular expressions match any occurrences of those character strings in a text file.

The regular expression operators are:

| ^ \$. * + ? () [] { } \

These have the following meanings.

| | |
|--------|---|
| . | any character but new-line |
| ^x | x at the beginning of the line |
| x\$ | x at the end of the line |
| [xy] | x or y |
| \x | x, if x is an operator |
| [^x] | any character but x |
| [x-z] | x, y or z |
| x? | optional x |
| x* | 0, 1, 2,... instances of x |
| x+ | 1, 2, 3,... instances of x |
| x{m,n} | m through n occurrences of x |
| xx yy | xx or yy |
| (x) | x |
| "xy" | xy, even if x or y are operators (except \) |

Examples of Regular Expressions

abc

matches any line of text containing the three letters 'abc' in that order

a.c

matches any string beginning with the letter 'a' followed by any character followed by the letter 'c'.

^.\$

matches any line containing exactly one character (the newline is not counted)

a(b*[c*])d

matches any string beginning with a letter 'a' followed by either zero or more of the letter 'b' or zero or more of the letter 'c' followed by the letter 'd'

.* [a-z]+ .*

matches any line containing a word consisting of lower case alphabetic characters delimited by at least one space on each side.

`(morty).*\1`

`morty.*morty`

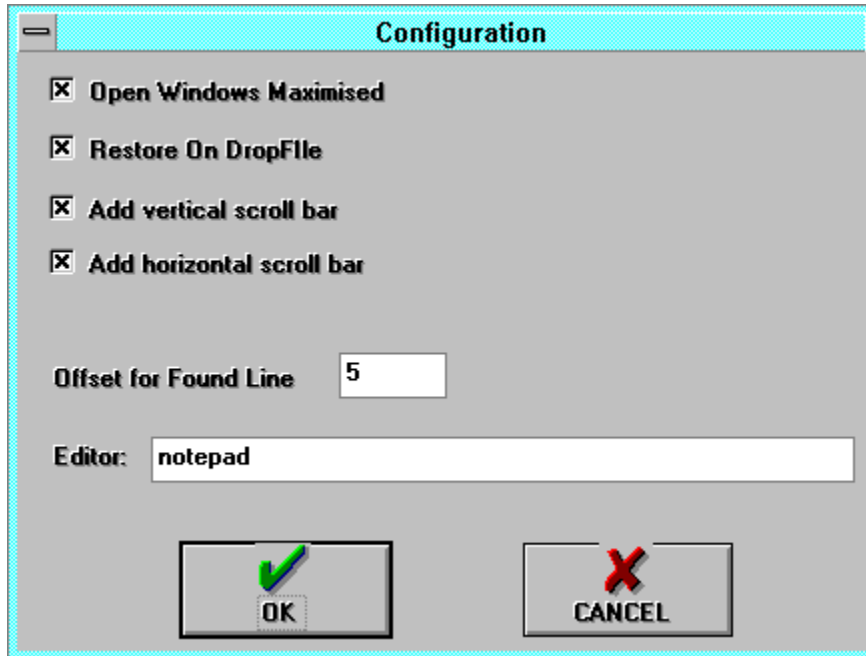
The above expressions both match lines containing at least two occurrences of the string 'morty'

Un-Installing

To uninstall the File Viewer run the Uninstall program (called llatsni.exe) using the icon in the FileView group in Program Manager.

Configuration

The configuration dialog allows you to set options such as whether you want vertical and/or horizontal scrollbars, whether windows should be opened maximised and whether the file viewer should restore its main window when files (from the Windows file manager) are dropped on its icon.



The image shows a 'Configuration' dialog box with a light blue title bar and a grey background. It contains four checked checkboxes, a text input field for 'Offset for Found Line', and a text input field for 'Editor'. At the bottom are 'OK' and 'CANCEL' buttons.

Configuration

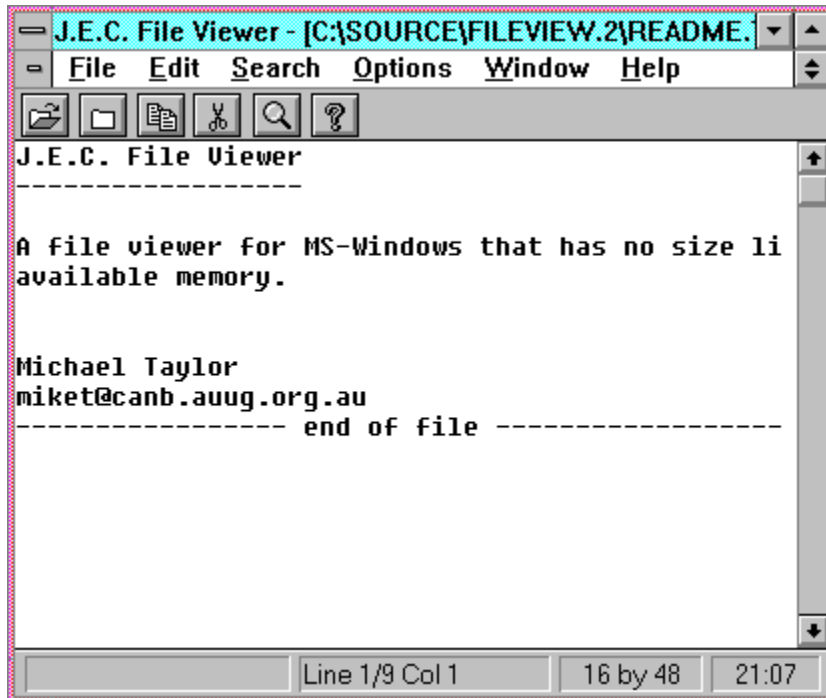
- ☒ Open Windows Maximised
- ☒ Restore On DropFile
- ☒ Add vertical scroll bar
- ☒ Add horizontal scroll bar

Offset for Found Line

Editor:

File View Usage

The main window consists of a menu bar, toolbar, client window area and status bar. The toolbar has file open, file close, edit file, copy, search and help buttons. The status bar shows help text for menu items and toolbar buttons, line information and the screen coordinates in rows and columns.



Keyboard Definitions

| | |
|--------------|-------------------------------|
| Alt-C | Set options |
| Alt-P | Previous Window |
| Alt-N, F7 | Next Window |
| Ctrl-C | Copy |
| Ctrl-E | Edit file |
| Ctrl-F,Alt-S | Find/Search |
| Ctrl-G | Goto line |
| Ctrl-O | Open File |
| Up-arrow | Previous line |
| Down-arrow | Next line |
| PageUp | Previous page |
| PageDown | Next page |
| Ctrl-End | End of file |
| Ctrl-Home | Start of file |
| F1 | Help |
| F3 | Find next |
| Alt-F3 | Find next (reverse direction) |
| F7, Alt-N | Next Window |

