

## Contents



### **Space Hound** (including Help for **Space Hound Pro**)

[Introduction](#)

[Program Operations](#)

[Product Support](#)

[Registration and Ordering Information](#)    **Note:** [If you are already Registered](#)

**There are five primary display and reporting functions.**

[Files List:](#)

See [Creating a Files List](#)

[Directory Map:](#)

See [Creating a Directory Map](#)

[File Extension:](#)

See [Creating a File Extension Report](#)

[Duplicate Files:](#)

See [Creating a Duplicate Files Report](#)

[Activity Report:](#)

See [Creating an Activity Report](#)

#### **Other Functions:**

[Ancillary Functions:](#)

[Netware Extensions](#)

#### **Other Miscellaneous**

[Tips and Tricks](#)

[Known problems and workarounds](#)

[Disclaimer & Agreement](#)

[Copyright Notice](#)

[Product Support](#)

[System Requirements](#)

[What is Shareware](#)

[Windows User Group Network](#)


[Distribution Licensing Agreement](#)

## Program Operation

**Space Hound** is quite easy to use. Most operations are begun by either selecting items from the pull down menu bar or using a mouse or other pointing device to select operations from the buttons on the tool bar.

You will notice that the images on the tool bar buttons change as you enter and leave various parts of the program. Only buttons for operations which are currently available are visible. See [Buttons](#)



At the bottom of the screen is an image of a pointing finger.  This points to an area where status messages and other helpful information will appear. When you move the mouse over various screen elements, the status bar will tell you what the element is. Occasionally, [processes](#) will display their completion status as well.



Please return to the [Contents](#) screen for specific instructions on use of the [programs](#) three primary display and reporting functions.

Also See [Keyboard](#) Operations

## Features of Pro Version



### **Space Hound Pro**

See [Ordering Information](#)

- Elimination of all "nag" screens and activation of all features.
- A file viewer with support for over 20 file formats including ASCII, HEX, PCX, TIF, GIF, BMP, WMF, ICON, Microsoft Word, WordPerfect, AMI PRO, xBase, Paradox, Lotus, Excel, ZIP, LZH, Quattro Pro, MetaFiles, Q&A, Windows Write, and Microsoft Works. (New viewers are added from time to time and support for newer file formats updated as soon as possible.)
- Enhanced version control information display for files containing version information.
- Additional updates, corrections and bug fixes implemented after the release of the shareware version.

## Order Form

Ver 1.77

**Note:** Select "File-Print Topic" from the menu bar to **print** this form.

You can order **Space Hound Pro** by mail with payment by check , money order or Visa/MasterCard.

**Space Hound Pro** (Please Print)

Name: \_\_\_\_\_  
Company: \_\_\_\_\_  
Street: \_\_\_\_\_  
Street: \_\_\_\_\_  
City: \_\_\_\_\_  
State: \_\_\_\_\_ ZIP: \_\_\_\_\_  
Country: \_\_\_\_\_  
Telephone Number: \_\_\_\_\_

Credit Card Type: **Visa** **MasterCard** **Amex**  
Credit Card Number: \_\_\_\_\_  
Expiration Date: \_\_\_\_\_

Signature: \_\_\_\_\_

(Unless otherwise requested we ship a 3.5" HD disk)

<b>Space Hound PRO</b>	37.95	_____
<b>Space Hound PRO (Netware Edition)</b>	74.95	_____
Oklahoma residents add 8.375% sales tax		_____
Shipping/Handling - US or Canada	Free	_____
Shipping/Handling - Outside of US/Canada	Free	_____

Total in US Funds drawn on a US Bank \_\_\_\_\_

Make checks payable to: **Fineware Systems**

**Mail to:**  
Fineware Systems  
P.O. Box 75776  
Oklahoma City, Ok. 73147

By the way, where did you initially hear about **Space Hound**?  
\_\_\_\_\_ (If CompuServe, which forum)



## Directory Map

Similar to the Windows File Manager in appearance, its main purpose is to provide a convenient method of evaluating disk storage usage within the directory plus the combined storage of all nested levels below.

**For example:** Your WINDOWS directory will contain a directory called SYSTEM and perhaps a directory called MSAPPS. The directory map entry for WINDOWS would include the storage usage within the WINDOWS directory alone and to the right, a figure representing the combined storage of items in the WINDOWS directory plus the WINDOWS\SYSTEM and WINDOWS\MSAPPS directories.

Two separate reports are available from this display. The **File Report** will show the files within the highlighted directory. The **Map Report** shows the directory structure itself. The appearance of each report is based on the appearance of the display when the report is requested. If you expand a directory tree level within the display, the **Map Report** will reflect the expansion and show the sub directories beneath. If the files are sorted by size, the **File Report** will be printed in the same order.

### Additional Topics

See [Creating a Directory Map](#)

See [Directory Map Display](#)

See [File List Display](#)

See [Saving a Directory Map](#)

See [Printing the Directory Map Reports](#)



## File Extension Display

An organizational tool which allows you to group all files which share the same file extension. See [List of common File Extensions](#). The Extension Report may be printed either as a complete report (all extensions) or it may be printed with only the files of a single extension. Sorting sequence in the report is controlled by selecting it for the display first.

### Additional Topics

See [File Extension Display](#)

See [Creating an Extension Display](#)

See [Saving an Extension Display](#)

See [Printing an Extension Display](#)



## Duplicate Files

Allows for searches over one or more physical disk volumes for duplicated files. You may search for exact duplicates or only matching file names (See Comparing Files). Files with the same name may have different contents. An additional option (content only) is available when you wish to search for exact duplicates.

The Duplicate Files Report may be printed either as a complete report (all selected files) or it may be printed with only the files under a specific filename.

### **Additional Topics**

See Duplicate Files Display

See Creating a Duplicate Files Display

See Saving a Duplicate Files Display

See Printing a Duplicate Files Display

## Ancillary Functions

Launching Files and Documents

Viewing Files (Registered version feature)

Exporting

Using Saved Files

Disk Information

Deleting Files

Deletion Report

Miscellaneous Options

Setting Colors

Comparing Files

Closing Active Windows

Default Disk Drives

Display Fonts

Printing

Printer Fonts

Printer Setup



## Storage within the directory

This column represents the storage usage within the directory named on the left.

## Nested Storage

This column represents the combined storage usage of the directory and all nested sub directories below.  
If the column entry is blank, then the nested total is the same as the directory total.

## Trademarks

The following trademarks are used throughout this help file. Whenever you come across them, please remember that they are the trademarks or registered trademarks of the companies shown below.

Microsoft is a registered trademark and Windows and Visual Basic are trademarks of Microsoft Corporation.

All other names are trademarks or registered trademarks of their respective owners.

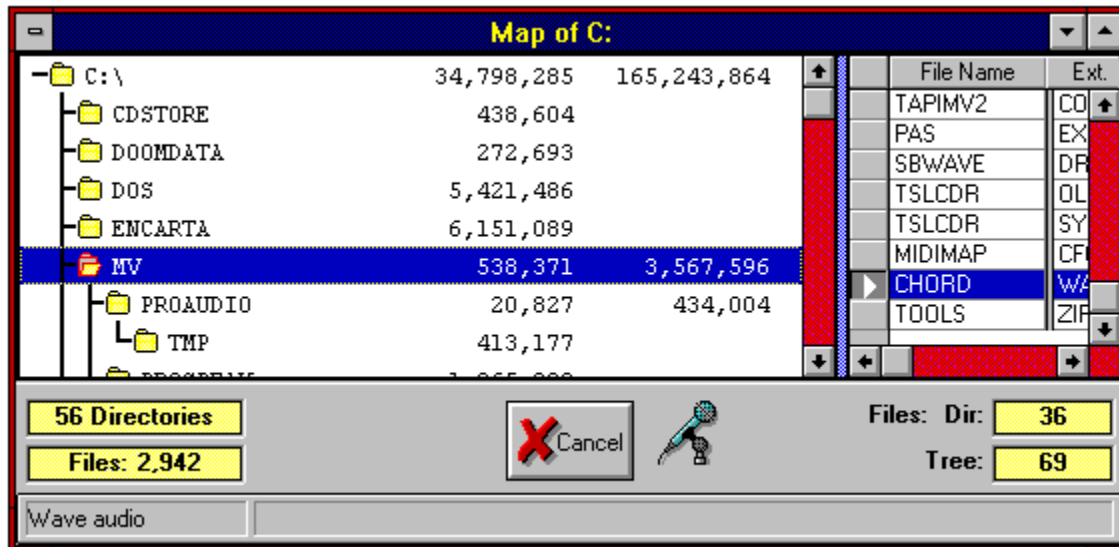
Any product names or file names used in this help file are for illustrative purposes only. Use of these product names does not imply endorsement of the product by Fineware Systems, or endorsement of Fineware Systems by the product vendor.

## Directory Map Display

Point to the areas on the screen with the mouse to see a description of each area.

**Hint:** Use the slider control which separates the left and right halves of the display to size the window panes relative to each other. To use the slider, place the mouse over the slider until you see the mouse pointer change to an arrow which points both left and right at the same time. Hold down the left mouse button and the slider control turns red. You may then shift the control left or right as desired. Release the left mouse button to set the window panes to their current width.

Also see [File List Display](#) for an expanded look at the file listing side of the display.



## Status Bar Element: Comment Section

Program status and information is displayed here.

## Status Bar Element: Resources

This indicates the remaining resources available within Windows. When resources are short, applications may fail and issue "Out of Memory" messages. The background color turns **YELLOW** when resources are short and **RED** when they are becoming critical. You should always unload unnecessary programs when resources become scarce.

The boxes represent remaining resources in GDI, USER, & SYSTEM.

## Status Bar Element: Memory

This number represents the amount of remaining memory. It is based upon the amount of total physical memory plus the size of the swap file less memory used by currently loaded applications.

Note: Some applications may fail to release memory when they are terminated. This is especially true if an application is abnormally terminated.

## Miscellaneous Buttons

Tool bar buttons launch various functions within the program. Only buttons for functions currently available to you are visible. During longer processes, the buttons are disabled to allow the original process to complete without interruption.



## Pointing Finger

Program author's favorite method of pointing out important information. Used in virtually all of his applications

## File Extension Display

Point to the areas on the screen with the mouse to see a description of each area.

You may also sort the results of the search as desired. Sorting is performed by selecting the column desired and pressing one of the sort operation buttons on the tool bar.

If you sort the files by size, descending, then the report will be printed with the largest file at the top.

Extensions Report: C:\							
Ext	Files	Size		File Name	File Size	Date	Time
DLL	412	37,842,279	↑	GRAPH5	1,505,984	3/7/94	6:50:56 PM
PAR	2	32,657,676		ENCART94	1,342,976	11/3/93	12:00:00 PM
EXE	192	22,163,959		ORGCHART	991,168	2/11/94	12:00:00 PM
TTF	324	13,596,336		SPACEHND	751,632	9/7/94	7:56:18 AM
HLP	96	9,036,083		MSQUERY	622,464	11/5/93	9:52:28 PM
DRV	98	5,734,745		WIN386	577,557	11/1/93	3:11:00 AM
BMP	114	2,537,561		MSDRAW	574,256	8/31/92	12:00:00 AM
DL_	101	2,386,528		GRAPH	550,400	11/18/92	12:00:00 AM
SCR	37	2,347,176		SFX	504,434	3/26/92	9:57:50 PM
OCX	18	2,116,624	↓	SCHDPLUS	489,808	11/1/92	3:11:00 AM
Items: 192				Size: 22,163,959			
Dynamic Link Library				Encarta '94 main executable (File Ver:2.12.0.22 Product Ver:2.12.0.22 OS:DOS-Win16 )			

## Duplicate Files Display

Point to the areas on the screen with the mouse and click once to see a description of each area.

You may also sort the results of the search as desired. Sorting is performed by selecting the column desired and pressing one of the sort operation buttons on the tool bar. If you sort the files by size, descending, then the report will be printed with the largest file at the top.

File Name	Files	Size	File Size	Date	Time	Path Name
SPACEHND.HLF	5	3,005,757	276,684	5/12/93	12:00:00 PM	C:\SPACEHND\MAKEC
SPACEHND.EXE	4	2,076,396	276,684	5/12/93	12:00:00 PM	C:\SPACEHND\MAKEC
SPACEHND.DHF	2	1,334,897	276,684	5/12/93	12:00:00 PM	C:\SPACEHND\MAKEC
SPACEHND.HL_	5	1,131,886	276,684	5/12/93	12:00:00 PM	C:\SPACEHND\MAKEC
VBRUN300.DL_	4	1,106,736				
MSGGRAPH.HLP	2	798,676				
SPACEHND.EX_	4	744,775				
SMBASIC.BAS	3	417,452				

## Cancel

Closes the display without further processing.

**Hint:** You may also use the **ESC** key for the same function.

## Directory Tree

These are the directories on the currently mapped drive. You may use the mouse to drill down within the directory structure by double clicking on any directory that has sub directories nested below it.

You can usually tell if a directory has nested sub directories by looking at the columns to the right of the directory name. The first column contains a total of the disk file storage used within the directory and the second column indicates the sum of the storage used within the directory plus all of it's nested sub directories. If this column is blank, then there are no files with a size greater than zero residing in nested sub directories below the current directory.



Use the tool bar buttons to set minimum and maximum expansion settings. Example: If the current default starting depth is set to 2 levels, pressing the button which points to the right would show all level 3 directories which are not already visible. See Selecting Standard Depth.

## Slider Control

Used to change the size of the split between the directory map and the files within the highlighted directory.

Position the mouse over the control, hold down the left mouse button and the slider will turn red. Move the mouse to the right or left until the window displays the information the way you want it.



**NOTE:** You may alter the split from vertical to horizontal by depressing the tool bar button provided. This is an image of the button.

## File List Display

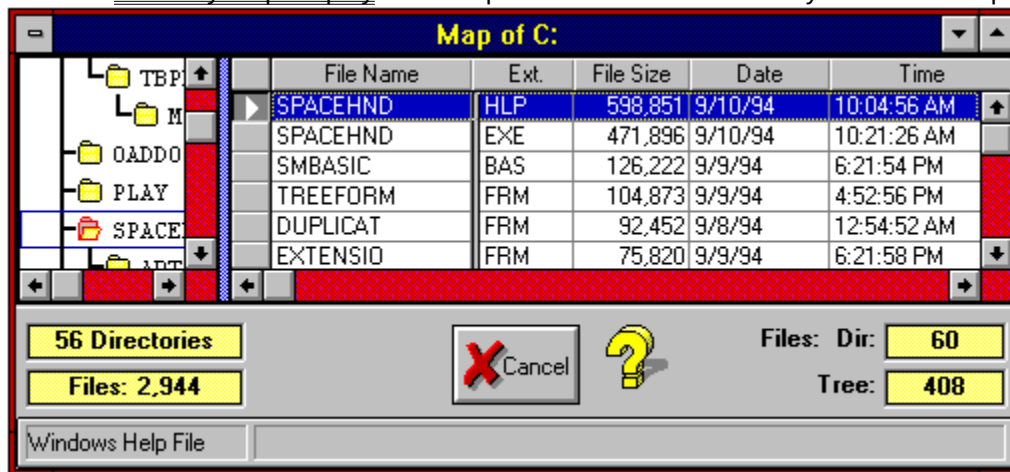
Point to the areas on the screen with the mouse to see a description of each area.

You may also sort the results of the search as desired. Sorting is performed by selecting the column desired and pressing one of the sort operation buttons on the tool bar.

If you sort the list by file size, descending, then the report will be printed with the largest file at the top.

**Hint:** Use the slider control which separates the left and right halves of the display to size the window panes relative to each other. To use the slider, place the mouse over the slider until you see the mouse pointer change to an arrow which points both left and right at the same time. Hold down the left mouse button and the slider control turns red. You may then shift the control left or right as desired. Release the left mouse button to set the window panes to their current width.

Also see [Directory Map Display](#) for an expanded look at the Directory side of the display.



## Files Within Highlighted Directory

All files stored within the highlighted directory are listed. You may sort this list on file name, file extension, file date, and file size.

**Note:** **Space Hound Pro** Feature: You may use the right mouse button to launch the highlighted programs and documents. Refer to help on associating files in the Windows' File Manager.



## Credits

### **Programming and System Design:**

Al Meadows

Fineware Systems

### **Development Language**

Visual Basic Pro v. 3.0 for Windows

Visual Basic is a product of Microsoft Corporation

Microsoft, MS, and MS-DOS are registered trademarks, and Windows and the Windows logo are trademarks of Microsoft Corporation.

### **Add-on Products and libraries**

Microhelp, Inc.

Sheridan Software Systems

Desaware

### **Help File**

VB HelpWriter: Fred Bunn/Teletech Systems

See Acknowledgments

## Creating a Directory Map

**Tool bar Method:** Press the Display Directory Map Button



**Menu bar Method:** Select Reports|Directory Map Display...



Select the starting directory by selecting the desired disk drive, then selecting the starting point within the directory to begin the map. Press the OK button (or ENTER key) to begin the process. Note: You may create up to 9 directory maps at a time. See [Saving a Directory Map](#).

## Starting Directory: Drive Icons

You may select the disk volume by clicking once on these images.

## Starting Directory: Directory Tree

You may select the starting point within the directory structure by clicking once on a directory. Double clicking will expand the directory tree to show sub directories nested below if any. [Hint](#): Use the plus key (shift =) to expand the tree using the keyboard only.

## Starting Directory: Selected Directory

This display tells you the currently selected starting directory. Press the OK Button to proceed or use the directory tree list to change to another directory location.

OK

Accepts the display and continues processing.

Hint: You may also use the ENTER key for the same function.

## Introduction

See [How to use Space Hound Help](#)

**Space Hound** is a professionally designed and developed multipurpose Windows utility program. The overall mission of the program is to "sniff out" wasted space on your hard disk that is duplicated, obsolete, or simply forgotten. The freely distributable shareware version has this as its primary goal. The "**Pro**" version adds additional functionality for dealing with what is found.

Five primary displays guide you in identifying files which are duplicated, obsolete, and even files which may have been forgotten. **Space Hound** provides the tools to assist you in determining which files fall into these categories.

In addition to helping you "sniff out" wasted and nonproductive disk space, the program provides excellent reporting capabilities to aid you in managing your data.

**Note:** This help file is used for all three versions of **Space Hound** which includes:

- the freely distributable, evaluation version of **Space Hound**
- registered version of **Space Hound Pro** See [Features List](#)
- **Space Hound Pro for Novell Networks** See [Netware Extensions](#)

**Space Hound Pro** and **Space Hound Pro for Novell Networks** only features will always be clearly identified throughout this help file.

## Features:

**File List:** Similar to the Windows File Manager's File Search result in appearance, its goal is to provide a full system search and display without the limitations imposed by the Windows File Manager.

[File List Features](#)

**Directory Map:** Similar to the Windows File Manager in appearance, its main purpose is to provide a convenient method of evaluating disk storage usage within the directory plus the combined storage of all nested levels below.

[Directory Map Features](#)

**Extensions Display:** An organizational tool which allows you to group all files which share the same file extension name.

[Extension Display Features](#)

**Duplicates Display:** Allows for searches over one or more physical disk volumes for duplicate files. You may search for [exact duplicates](#) or only matching file names.

[Duplicates Display Features](#)

From these basic displays, you have a number of additional functions available from each display.

[Features common to all Displays](#)

## HotSpot Icon

Example of a HOT spot. In this example, the icon images are purely ornamental.



## HotSpot Label

Example of a HOT spot. In this example, there is text within a label which identifies the name of the current program.

## Extension Name

Alphabetical list of all unique file name extensions contained within the search parameters. In this example, there are 118 unique items within the list. Highlighting or selecting an extension using the mouse or keyboard provides a list of all files within the search parameter that use that extension.

## Extension Items

This is the number of unique file extensions found within the search parameters.

## Extension List: File Names

Files which use the currently highlighted extension. In this example, the highlighted extension name is EXE and the highlighted file name is CALENDAR.

The full 8.3 DOS file name is CALENDAR.EXE and is located within the C:\WIN directory. It also contains 59,824 bytes and was created on 03-10-1992 at 3:10 AM.

## Extension List: File Size

Size in bytes of the file.

## Extension List: Date and Time

Date and time the file was created or last modified.

## Extension List: Directory

Directory in which the highlighted file is located.

## Extension List: File Count

Number of files found with the highlighted extension.



## Extension List: Cumulative Size

The total size of the files found with the highlighted extension.

**Note:** This number is limited to the items within the list. It is possible that the number of total items which qualify for inclusion within the list exceed the capabilities of the program. In general, the maximum number of entries in the list is approximately 1,400. This is totally depended upon the cumulative size of list item elements such as directory names, file names, file sizes, etc. The number of items could vary if the list is sorted in another sequence.

## Directory Tree: Total Directories

Total number of directories found within the search parameters. This includes nested sub directories which may be in unexpanded trees.

## Directory Tree: Total Files

Total number of files found within the search parameters.

## Directory Map: Files within Directory

Total number of files within the highlighted directory.

## Directory Map: Files within Tree

Total number of files contained within the currently highlighted directory and all nested sub directories.

## Duplicate Files: File Names

Alphabetical list of all files found within the search parameters that have at least one additional instance. This does not mean that the files are identical, simply that they share the same file name.

**Hint:** You may use the compare feature of **Space Hound** to test any two files for equality at the bit level.

## Duplicate Files: File Count

Number of unique file names which were found to have at least one other instance of the same name within the search parameters.

## Duplicate Files: File Type

Some file types are recognized by **Space Hound**. If the file type can be determined, it will be displayed in this status box area.



## Duplicate Files: File Description

Some files contain embedded file descriptions and version information. If possible, **Space Hound** extracts this information and displays it on this status bar.

## Duplicate Files: Instances Found

Number of files with the same file name as the highlighted name.

## Duplicate Files: Combined Size

Combined size of all files with the same name as the highlighted file.

## Duplicate Files: File Size

File size (in bytes) of the file.

## Duplicate Files: Date and Time

Date and time the file was created or last modified.

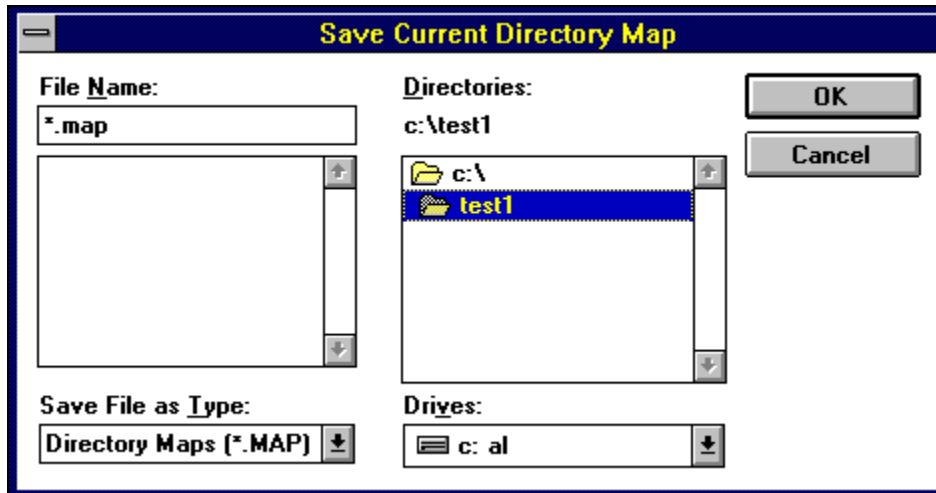
## Duplicate Files: Location

Disk and directory location of the file.

## Saving a Directory Map

You may save a directory map for later use. See [Using Saved Files](#)

**Menu bar Method:** Select File|Save...



Select the drive and directory desired and press the OK button. The default file name extension for Saved Directory Maps is .MAP. See [Printing a Directory Map](#).

**Note:** If multiple displays are open, the display which will be saved will be the most recently activated one regardless of which type of display it was. For example: If you have a Directory Map on screen and then create a Duplicate Names display and attempt to save, you will be saving the Duplicate Names. To insure that the correct display is saved, you should click somewhere on the Directory Map display itself to make it the current display before you save it. If multiple Directory Maps are visible, the most recently activated is the current Directory Map and will be the one saved.

**Caution:** **Saved directory maps may not be 100% reliable.** When reloaded, the names of the directories, nested storage totals, and file counts are based upon the view that was in effect when the map was saved. However, the files within the directories represent the current environment.

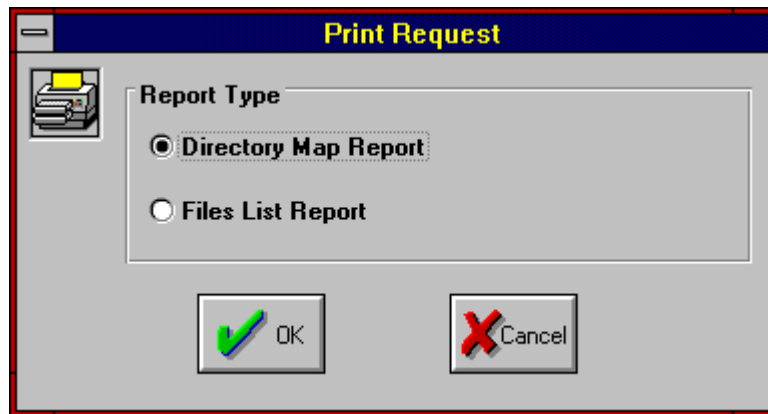
## Printing the Directory Map Reports

You may print the directory map or a listing of the files within a particular directory.

**Tool bar Method:** Press the Print Button



**Menu bar Method:** Select File|Print...







## Print Directory Map

Select this to produce a printed report of the currently selected Directory Map which shows the directory structure in an outline format..

**Note:** The report will be printed using the same information which is displayed on the screen. If a tree is expanded, it will be expanded within the report.



## Print Files List Report

Select this to produce a printed report of the files contained within the highlighted directory from the currently selected Directory Map.

Note: The report will be printed using the same information which is displayed on the screen. If a files are sorted on date, they will be sorted on the report as well.

## Definition of Shareware

Shareware distribution gives users a chance to try software before buying it. If you try a Shareware program and continue using it, you are expected to register. Individual programs differ on details -- some request registration while others require it, some specify a maximum trial period. With registration, you get anything from the simple right to continue using the software to an updated program with printed manual.

Copyright laws apply to both Shareware and commercial software, and the copyright holder retains all rights, with a few specific exceptions as stated below. Shareware authors are accomplished programmers, just like commercial authors, and the programs are of comparable quality. (In both cases, there are good programs and bad ones!) The main difference is in the method of distribution. The author specifically grants the right to copy and distribute the software, either to all and sundry or to a specific group. For example, some authors require written permission before a commercial disk vendor may copy their Shareware.

Shareware is a distribution method, not a type of software. You should find software that suits your needs and pocketbook, whether it's commercial or Shareware. The Shareware system makes fitting your needs easier, because you can try before you buy. And because the overhead is low, prices are low also. Shareware has the ultimate money-back guarantee -- if you don't use the product, you don't pay for it.

## Disclaimer & Agreement (for freely distributable shareware version only)

Note: See [Registered version Disclaimer & Agreement](#)

Users of **Space Hound** must accept this disclaimer of warranty:

"**Space Hound** is supplied as is. The author disclaims all warranties, expressed or implied, including, without limitation, the warranties of merchantability and of fitness for any purpose. The author assumes no liability for damages, direct or consequential, which may result from the use of **Space Hound**."

**Space Hound** is a "shareware program" and is provided at no charge to the user for evaluation. Feel free to share it with your friends, but please do not give it away altered or as part of another system. The essence of "user-supported" software is to provide personal computer users with quality software without high prices, and yet to provide incentive for programmers to continue to develop new products. If you find this program useful and find that you are using **Space Hound** and continue to use **Space Hound** after a reasonable trial period, you must make a registration payment of \$37.95 (plus applicable shipping/handling/sales taxes) to [Fineware Systems](#). The \$37.95 registration fee will license one copy for use on any one computer at any one time. You must treat this software just like a book. An example is that this software may be used by any number of people and may be freely moved from one computer location to another, so long as there is no possibility of it being used at one location while it's being used at another. Just as a book cannot be read by two different persons at the same time. Commercial users of **Space Hound** must register and pay for their copies of **Space Hound** within 30 days of first use or their license is withdrawn. Site-License arrangements may be made by contacting Fineware Systems.

Anyone distributing **Space Hound** for any kind of remuneration must first contact Fineware Systems at the address below for authorization. This authorization will be automatically granted to distributors recognized by the (ASP) as adhering to its guidelines for shareware distributors, and such distributors may begin offering **Space Hound** immediately (However Fineware Systems must still be advised so that the distributor can be kept up-to-date with the latest version of **Space Hound**).

You are encouraged to pass a copy of **Space Hound** along to your friends for evaluation. Please encourage them to register their copy if they find that they can use it. Upon registration they will receive a copy of the latest version of **Space Hound**.

**Fineware Systems**  
**P.O. Box 75776**  
**Oklahoma City, Ok 73147**

Technical support via CompuServe  
CompuServe ID: 70650,2022 (Al Meadows)  
Prodigy ID: BBTk05A (Al Meadows)  
America On line ID: VB AL

# Distribution Licensing Agreement

**Note:** Select "File-Print Topic" from the menu bar to print this form.

# Space Hound Distribution Licensing Agreement

Anyone wishing to charge people a fee for giving them a copy of Space Hound must have the written authorization of the author, without which, the distributor is guilty of copyright violation. To receive such authorization, send this completed application, along with a copy of your software library's order form to:

Al Meadows  
Fineware Systems  
P.O. Box 75776  
Oklahoma City, Ok 73147

Include \$7 to cover the cost of processing the application and of sending you the latest version of Space Hound. For distributors already recognized by the Association of Shareware Professionals, this application is not necessary.

Name of Organization: \_\_\_\_\_  
Your Name: \_\_\_\_\_  
Address: \_\_\_\_\_  
\_\_\_\_\_

### Terms of Distribution of Space Hound:

1. The fee charged may not exceed \$10, including postage, mailer and any other charges.
2. Your library's catalog or listing must state that this program is not free, but is copyrighted software that is provided to allow the user to evaluate it before paying.
3. The offering and sale of Space Hound will be stopped at any time the author so requests.
4. Copies must be made from the copy of Space Hound sent to you with this agreement. This is required for control purposes.
5. Problems or complaints about the program will be reported to the author for investigation. In return for a license to charge a fee for the distribution of the program Space Hound, I agree to comply with the above terms of distribution.

Signed, \_\_\_\_\_  
your signature                      date

Al Meadows	date
------------	------

## Ordering Information

Registration for **Space Hound Pro** is \$37.95 (\$74.95 for [Netware Edition](#)).

Shipping and handling is **FREE** anywhere in the world! You may either pay by check, money order, or credit card.

See [Site License Ordering](#) for multi-unit sales.

You may order with **Visa, MasterCard, or American Express** by including the card number, expiration date, name as it appears on your card, and the billing address.



Via **Fax Direct** from Fineware.

**Orders Only: (800) 544-1740** or (405) 947-1740  
**Fax Number: (405) 942-7819**

Via **e-mail Direct** from Fineware.

### **Al Meadows - Fineware Systems**

CompuServe.....70650,2022  
Prodigy.....BBTK05A  
America Online.....VB AL  
Microsoft Network.....FINEWARE  
Internet.....70650.2022@CompuServe.Com  
World Wide Web.....<http://www.fineware.com>

Order Form **Direct** from Fineware using **US Mail**

**Available: Visa, MasterCard, Amex, Check or Money Order**



Ordering Online **via CompuServe SWReg Service**

**Available: Conveniently billed to your CompuServe Account**



PsL Ordering Information **Credit Card Orders ONLY**

**Available: 800 Number, Fax, MasterCard, Visa, Amex, or Discover**

See About PsL



Oakley Data Services **United Kingdom**



CopyCats **Netherlands, Germany, and Belgium**



P. & A. Shareware **Japan**



## PsL Ordering Information

### **CREDIT CARD ORDERS ONLY**

You can order with **MasterCard**, **Visa**, **Amex**, or **Discover** from Public (software) Library by calling **800-2424-PsL** or **713-524-6394** or by **Fax** to **713-524-6398** or by **CIS E-mail** to **71355,470**. You can also mail credit card orders to PsL at P.O.Box 35705, Houston, TX 77235-5705.

**THE ABOVE NUMBERS ARE FOR ORDERS ONLY. NOT TECHNICAL SUPPORT.**



PsL Order Form (Credit Card Orders ONLY)

**Any questions about the status of the shipment of the order, refunds, registration options, product details, technical support, volume discounts, dealer pricing, site licenses, etc., must be directed to Fineware Systems.**

To insure that you get the latest version, PsL will notify us the day of your order and we will ship the product directly to you."



## About PsL

PsL is short for "Public (software) Library". PsL has been distributing public domain and shareware software on disks since 1982. PsL has been recommended in every major (PC) computer magazine, many computer books, and many non-computer publications such as NY Times.

PsL offers a shareware registration order taking service primarily for the benefit of shareware authors and their customers. The service began in January 1989 and presently takes orders for many hundreds of shareware authors.

PsL can take orders via our 800#, non-800#, CIS#, and Fax#. Their operators are available from 7:00 a.m. to 7:00 p.m. CST Monday-Friday and normally from 7:00 a.m. to 4:00 p.m. on weekends. They provide the easiest and most direct way to register shareware via CompuServe - via E-mail. Fax and credit cards are the primary means of registration for overseas customers.

**Please note** that support and usability problems [are not to be reported to PsL](#). They do not have support technicians who are trained about the usage and capabilities of **Space Hound** and simply refer such calls to me anyway "after" charging me a service charge.

# PsL Order Form

Ver 1.77

**Note:** Select "File-Print Topic" from the menu bar to print this form.

You can order **Space Hound Pro** by Phone, Mail or Fax with payment by credit card.

## **PsL Product# 11320**

Name: \_\_\_\_\_  
Company: \_\_\_\_\_  
Street: \_\_\_\_\_  
Street: \_\_\_\_\_  
City: \_\_\_\_\_  
State: \_\_\_\_\_ ZIP: \_\_\_\_\_  
Country: \_\_\_\_\_  
Telephone Number: \_\_\_\_\_  
Credit Card Type: \_\_\_\_\_  
Credit Card Number: \_\_\_\_\_  
Expiration Date: \_\_\_\_\_

Signature: \_\_\_\_\_

(Unless otherwise requested we ship a 3.5" HD disk)

<b>Space Hound PRO</b>	37.95	_____
<b>Space Hound PRO</b> [Netware Edition]	74.95	_____
<b>Texas</b> residents add 8.25% sales tax		_____
Shipping/Handling - US or Canada	Free	_____
Shipping/Handling - Outside of US/Canada	Free	_____

Total in US Funds: \_\_\_\_\_

### **Fax or Mail**

Public (software) Library  
P.O. Box 35705  
Houston, TX 77235-5705  
Orders: 1-800-2424-PsL or 1-713-524-6394  
Fax Orders: 1-713-524-6398

By the way, where did you obtain the shareware version  
of **Space Hound**: \_\_\_\_\_

## Upgrade Offer

See [Upgrading to Latest Version](#) for **Registered Users**

**Space Hound Pro** offers you the highest capability for evaluating and managing your valuable hard disk space. See [Features of Space Hound Pro](#)

## Acknowledgments

I wish to thank the people whose contributions have made this application possible either by providing suggestions, assisted in the beta test, or otherwise contributed something which went into this program.

**Dan Appleman:** His book Visual Basic Programmer's Guide to the Windows API is the definitive work available today for the Visual Basic programmer.

**Peter Dwyer:** The most prolific bug finder south of...well everywhere!

**James Archie:** For listening to me talk about the app almost every day for months and encouraging me to get it shipped.

**Joel Diamond:** For providing Fineware with a home on CompuServe.

**Paul Cassel:** Substantial help during the beta test and is to blame for at least one of the programs better icons.

**Jim Ferguson:** Undoubtedly the most prolific of all of the beta testers. Lots of great comments and advice as well.

**Brad McLane:** Probably did the most to advise me about making the application ASP compliant.

**Enis Moran:** Great help early on in encouraging me to do the app. Sure would hate to pay his phone bills.

**Keith Pleas:** Both through early bug reports when the program was a shambles and example code in *Visual Basic Programmers Journal*.

**Joseph M. Salmeri:** Well written and highly documented bug reports during the beta test.

**Sunil Shah:** Lots of bug reports including probably the most unique and interesting one.

**Dorn Stickle:** His comments about color selections forced me to do the right thing and give the user some options.

Others worth mentioning as well include **Sam Patterson, Bill Locke, William Beem, Jack Presley, Brian Dowd, Joe Modica, Don Malin, Al Brassell, Caven Kelly, Ross Birdsong, Gary Pace, Tim Larason, Leroy J. Patton, Brian Moura, and Hank Ryan.**

**Most importantly,** I wish to acknowledge the consideration and sacrifice of my wife **Carol** and my daughters **Michelle** and **Christine**.

## Product Support

**IMPORTANT:** See How to report problems Without sufficient background on the problem, we may not be able to fix it.

Primary Support for Fineware's Utility programs is provided within the Windows Utility Forum on CompuServe. The GO WORD for the forum is **WINUTIL** and the forum is monitored by Fineware on a **daily basis**.

The Windows Users Group Network (WUGNET) sponsors the WINUTIL Forum, and the Forum is open to all CompuServe users.

Technical support is available at no charge by sending electronic mail to:

**Al Meadows (Fineware Systems)**

- **70650,2022** on **CompuServe**
- **70650.2022@CompuServe.com** on **Internet**
- **http://www.fineware.com** on **Internet World Wide Web**
- **BBTK05A** on **Prodigy**
- **VB AL** on **America On line**
  - **FINEWARE** on **The Microsoft Network**

You may also use our **Fax number (405) 942-7819** for reporting problems.

Technical support is also available by sending **US Mail** to Fineware Systems, P.O. Box 75776, Oklahoma City, Ok 73147.

**Registered users have priority but I will try to answer all questions.**

## How to Report Problems

**When reporting problems, please include the following information:**

- 1) Is the problem reproducible? If so, how? Regardless, include a narrative description of the problem.
- 2) Did the problem occur when running Windows in Enhanced or Standard mode? You can determine which mode is active by choosing About in the Program Manager's Help pull-down menu.
- 3) If a dialog box with an error message was displayed, please include the full text of the dialog box, including the text in the title bar.
- 4) A text file called ERRORS.LOG may exist within the application's directory. The contents of this file should be included in the report. **Note: THIS IS THE SINGLE MOST IMPORTANT THING YOU CAN DO!**
- 5) A description of the hardware used including manufacturer and model. This should include descriptions of all internal components such as hard disk type and size. **Hint:** There should be a utility located either within your DOS or Windows directory called MSD. This is the Microsoft System Diagnostic program. It has an option of creating a report detailing the items on your system. There is also another utility called DrWatson which is located within your Windows directory. It is quite useful to the developer in determining system status when programs fail. To use DrWatson, simply launch it before launching **Space Hound** and it will create a DrWatson.Log file. Submitting both of these reports will help in isolating and fixing problems which you may encounter.
- 6) Include some method (preferably an E-mail address) where Fineware can contact you if we need additional information and to provide updated software when the problem has been resolved.

## System Requirements

**Space Hound** requires Windows 3.1 or later or Windows for Work groups 3.11 or later. I have tried to provide keyboard support for most functions but a mouse or other pointing device is highly recommended.

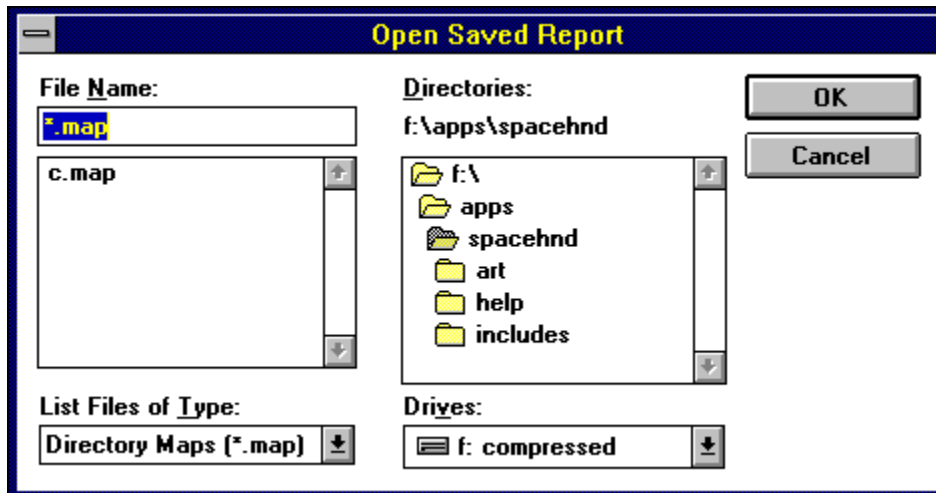
A PC (386 processor or above) with at least 4 MB of RAM (8 MB recommended).

Operations on other operating system environments (such as OS/2) have not been tested. A version which takes advantage of the **WindowsNT** environment and **Windows 95** (aka Chicago) is planned.

## Using Saved Files

Frequently, we may wish to create a report and save it for later use either to compare changes within our directory structure over time or to complete an evaluation started earlier.

**Menu bar Method:** Select File|Open...



Select the drive and directory desired, then select the saved file desired and press the OK button.

**Caution:** **Saved directory maps may not be 100% reliable.** When reloaded, the names of the directories, nested storage totals, and file counts are based upon the view that was in effect when the map was saved. However, the files within the directories represent the current environment. Other saved files such as Extension Reports and Duplicate Names may also be incorrect due to changes which have occurred after they were created. In the case of Extension Reports and Duplicate Names Reports, attempting to access a file which is no longer there will simply display an error message telling you that the file cannot be found. This is expected behavior and not an error. See [Specifics on Saved Files](#)





## Disk Information

This display is used to give a quick glimpse into the physical characteristics of your disk drives.





## Deleting Files

Deleting files is easy with Space Hound. While viewing any of the major displays including the Directory Map, Extensions Display, or Duplicate File Names Display, you may delete files using either the mouse or the delete key.



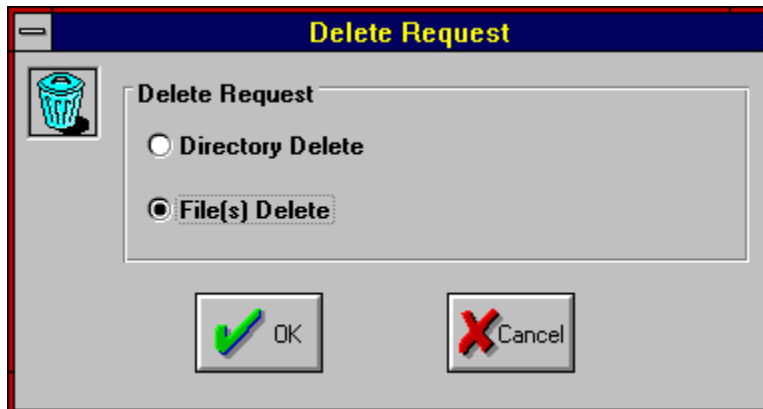
**Tool bar Method:** Press the Delete Button while the file(s) you wish to delete are highlighted.

**Keyboard Method:** Press the Delete Key while the file(s) you wish to delete are highlighted.

Highlight the file(s) you wish to delete using the mouse. You may select multiple files by holding down the Control Key (Ctrl) selected the desired files using the mouse and the left mouse button. You may select a range of files by selecting the first in the range, and then selecting the bottom of the range with the mouse and the left mouse button while holding down the shift key. You may also select multiple files in a range by holding down the left mouse button and dragging across the desired files.

**Note:** Unless the feature is disabled (see Miscellaneous Options), you will be queried about confirming the delete before it occurs.

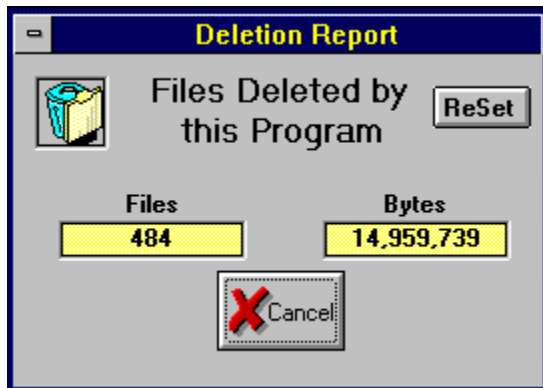
**Note:** You may delete an entire directory structure while the Directory Map is the current active display. Please be cautious using this option.



You may choose Directory or File deletes.



## Deletion Report



The deletion report provides you with a file and byte count of all files deleted by this program.



## Miscellaneous Options

You may set your own personal preferences for program operations. These include the ability to set the colors used within the application, the orientation of printed reports, and other miscellaneous items. See Setting Colors

The screenshot shows a dialog box titled "Miscellaneous Options" with a blue title bar. The dialog is divided into several sections:

- Printer Orientation**: A yellow header section containing four sub-sections: "Directory Map", "File List", "Extensions", and "Duplicates". Each sub-section has two radio buttons: "Portrait" (selected) and "Landscape".
- File Size Calculation Options**: A yellow header section containing two radio buttons: "Bytes" (selected) and "Allocation Units".
- Miscellaneous Options**: A yellow header section containing a checkbox labeled "Disable Delete Confirmations" (unchecked) and a button labeled "Change Colors".

At the bottom of the dialog are two buttons: "OK" (with a green checkmark icon) and "Cancel" (with a red X icon).



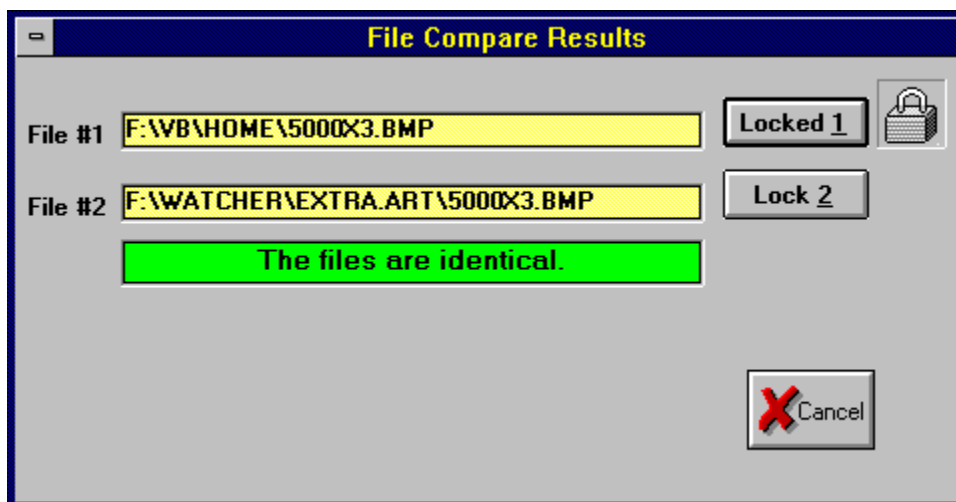
## Comparing Files

One of the techniques available for locating duplicate files on your computer is a search based strictly upon file names. This is very useful in determining that you have multiple versions of the same file.


Using this technique, the Duplicate Files Display will show you when you have files which share the same name even when those files are on separate disk volumes. However, it will not tell you if the files are identical. When viewing the duplicate files report, you can look at the size of each file and if different, then you know the files are not identical. You can look at the date but different dates do not guarantee that the files are the same. It is possible that you may have files which are identical but have different file names.

Space Hound allows you to compare any two files which have the same file size regardless of how they are named. To compare files, you must run one or more of the displays. The most logical tool to use when hunting for exact duplicates is the Duplicate Names Display. If the Duplicate File Names Display showed two instances of a file called ABC.TXT then you can compare the files by marking both of them, and selecting the Tool bar button pictured above. This would fill both the File#1 slot and the File#2 slot. While the Compare Files Window is displayed, subsequent file selections will fill the File#1 slot unless you lock the slot.

You are not limited to choosing files from the Duplicate Files Display. For example, you could run a Directory Map of your Drive C and an Extensions Report on Drive D. Select one of the files you wish to compare and select the Compare Files Button pictured above. The selected file will be placed in the box labeled File #1. Once you have selected File#1, lock it and select another file for the File#2 slot. You may lock either slot #1 or slot#2 but not both at the same time. In the example screen below, File #1 was locked so that the second file could be selected.



If the files are not identical but do have the same size, then the display will include the ASCII characters at the initial point the files differ and the position where the difference begins.

File Compare Results	
File #1	F:\PCC.VB\DATA\SUBDATA\PBB\493\DDATA.TX
	Lock 1
File #2	F:\PCC.VB\DATA\SUBDATA\PBB\1093\DDATA.T
	Lock 2
The files are NOT identical.	
Different starting with position 1	
File #1	8.75
File #2	3.93
	



## Closing Active Windows

Depress this to immediately close all open displays within the program.

## Creating a File Extension Report

**Tool bar Method:** Press the Extension Display Button



**Menu bar Method:** Select Reports|Extensions Display...



Select starting directory by selecting the desired disk drive, then selecting the starting point within the directory to begin the search. Press the OK button (or ENTER key) to begin the process. Note: You may create up to 9 Extension Displays at a time. See [Saving an Extension Display](#).



## Save Dialog Title

This is the title for the Save Dialog Windows for a Directory Map. Save Dialogs for Extension Reports and Duplicate File Names Reports are similar.

## Save File Name

Enter the name you wish to use for the saved file.

**Note:** Each Display Report has it's own standard naming convention for the saved file's filename extension.

Directory Maps will be assigned the extension .MAP  
Extension Reports will be assigned the extension .EXT  
Duplicate File Names Report will be assigned .DUP

It is not necessary to provide this extension yourself, it will be done automatically. If you do provide an file extension yourself, it will override the normal default. **Hint:** If you use other names for the extensions, you will have to specifically look for them in the File Open Dialog (See [Using Saved Files](#)).

## Current Directory

This is the currently selected directory. If you save now, this is where the file will be placed.

## Existing Files

This would show the names of existing files of the currently selected type. In this example, we would see files with the extension .MAP if any existed. To see files within the currently selected save directory with the extension of .DUP (Duplicate Names Save File), then use the "Save File as Type" combo box and select Extension Reports.

**Hint:** Double Clicking on an existing file name will place the file name within "File Name" text box and allow you to save the current report on top of a previous one. **Note:** The previous report would be destroyed.

## Save as File Type

The file type will be selected automatically for you depending upon which type of Display report you are attempting to save. You may manually change it to one of the other types if desired but this is not recommended.

## Select Save Directory

Use this directory control to select the directory desired to save the report. By default, all save attempts will default to the application's directory.

## Select Save Drive

Use this drive control to select the disk drive desired to save the report. By default, all save attempts will default to the application's disk.

## Save Dialog Command Buttons

Select OK to save the report, select cancel to abort the save operation.



## Files within Highlighted Directory

These are the files which are stored in the currently highlighted directory.

## File Size

Size of the file in bytes.

## File Date & Time

Date and Time the file was last modified or originally created.

## Saving an Extension Display

You may save a Extension Display for later use.

See [Using Saved Files](#)

**Tool bar Method:** Press the Save File Button



**Menu bar Method:** Select File|Save...



Select the drive and directory desired and press the OK button. The default file name extension for Saved Extension Reports is .EXT. See [Printing an Extension Display](#).

**Note:** If multiple displays are open, the display which will be saved will be the most recently activated one regardless of which type of display it was. For example: If you have a Directory Map on screen and then create a Duplicate Names display and attempt to save, you will be saving the Duplicate Names. To insure that the correct display is saved, you should click somewhere on the Directory Map display itself to make it the current display before you save it. If multiple Extension Displays are visible, the most recently activated is the current Extension Display and will be the one saved.

**Caution:** Saved Extension Reports may not be 100% reliable. When reloaded, the names of the directories, files, file sizes, file dates, and file counts are based upon the view that was in effect when the Extension Report was saved. If a file is no longer there, you will receive an error message if you try to manipulate or examine it.

## Printing the Extension Display

You may print the Extension Display as a complete report covering all extensions or only a single selected extension.

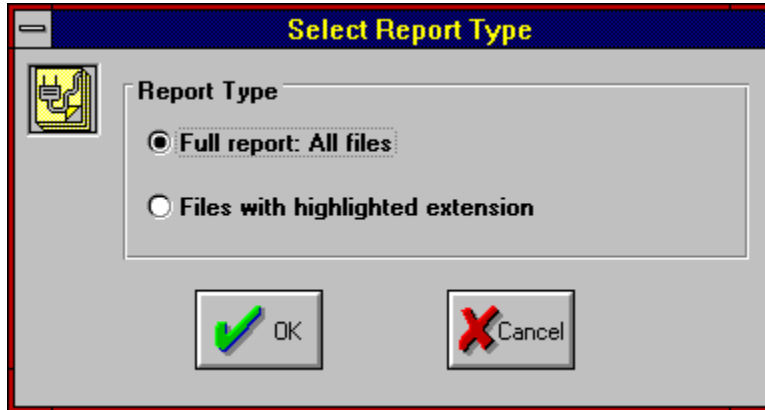
**Tool bar Method:**

Press the Print Button



**Menu bar Method:**

Select File|Print...



## Save File Name Desired

Enter the name of the previously saved file you wish to load.

**Note:** Each Display Report has it's own standard naming convention for the saved file's filename extension.

Directory Maps will be assigned the extension .MAP  
Extension Reports will be assigned the extension .EXT  
Duplicate File Names Report will be assigned .DUP

It is not necessary to provide this extension yourself, it will be done automatically. If you do provide an file extension yourself, it will override the normal default. Hint: If you use other names for the extensions, you will have to specifically look for them in the File Open Dialog (See [Using Saved Files](#)).

## List of Existing Saved Files

This would show the names of existing files of the currently selected type. In this example, we would see files with the extension .MAP if any existed. To see files within the currently selected save directory with the extension of .DUP (Duplicate Names Save File), use the "Save File as Type" combo box and select Extension Reports.

Hint: Double Clicking on an existing file name will place the file name within "File Name" text box. At this point, you would be ready to load the file.

## List as File Type

The file type defaults to .MAP. You may select the other defaults (.EXT and .DUP) as well as displaying all file types using wild cards (\*.\*) by using this control.



## Select Load Directory

Use this directory control to select the directory desired to load previously saved reports. By default, all save attempts will default to the application's directory.

## Select Load Drive

Use this drive control to select the disk drive desired to load previously saved reports. By default, all load attempts will default to the application's disk.

## Load File Dialog Command Buttons

Select OK to load the report, select cancel to abort the load operation.

## Specifics on Saved Files

In general, saved files are provided as a "extra" that you can use as you desire. Maintenance to your storage media through Space Hound should always be done with a current report if possible.

Map Reports will show the directory structure as it existed at the time of the reports creation. The size of the storage used within the directory and the tree are also based upon the conditions which existed when the report was generated.

The right hand side of the report shows the files which "currently" exist within the highlighted directory. This side of the report is always up to date when initially displayed as you highlight different directories on the directory map side of the display. Deleting files will update the directory storage and nested storage totals. If additional files have been added to the directory since the original report was produced, it's possible that the storage totals may go negative. It's also possible that files have been removed and the storage totals indicate usage not currently true.

Extension Reports, Duplicate Files, and File List will continue to show the same results as when they were first generated. Attempts to evaluate files which have been deleted or moved by clicking on them may result in an error message that states that the files cannot be found. The file dates, times, and sizes are also based upon their status when the report was created.

## List of Common File Extensions

This is only a short list of the more common file extensions. In many cases, it's not necessary for a file to be correctly named. If a .WAV file is labeled as a .TXT file, it can still be loaded and played using the Media Player which ships with Windows.

.386	Virtual device driver
.ASM	Assembly language source code
.BAT	Batch file
.BAS	Basic language source code
.BMP	Bitmap format graphic
.C	C language source code
.CAL	Windows calendar file
.COM	Executable program
.CRD	Windows card file
.DIZ	Shareware ID file
.DLL	Dynamic Link Library
.DOC	Document File
.DOT	Microsoft Word template
.DRV	Driver
.EXE	Executable program
.FNT	Windows font file
.FON	Windows font file
.GIF	Graphic image format
.H	Header file used with C programming
.HLP	Help file
.ICO	Icon file
.INI	Initialization file
.MAK	C or Visual Basic Make File
.MDB	Microsoft Access database file
.ME	Commonly used for text files as in "Read.Me"
.MID	Midi sound files
.PIF	Program information files
.RLE	RunLength encoded graphic
.SHG	Bitmaps edited by the Microsoft SHED utility to provide hot spots
.SYS	System file
.TXT	ASCII format text file
.WAV	Windows Sound file
.WRI	Window's Write format
.XLM	Excel Macro
.XLS	Excel spreadsheet
.ZIP	Zipped (compressed file) created by PkZip



## Extension Report: Print Full Report

Select this to produce a printed report of the currently selected Extensions Display which includes all file name extension variations found. The report will include all files which use this extension. Please note: Depending upon your configuration and the number of files found within the search parameters, this could be a rather long report.

**Note:** The report will be printed using the same sorting sequence used for the display. If the files are listed in descending order by date (latest at the top), then the report will be printed in the same order.



## Extension Report: One Extension Only

Select this to produce a printed report of the only the currently highlighted extension within the current Extensions Display.

**Note:** The report will be printed using the same sorting sequence used for the display. If the files are listed in descending order by date (latest at the top), then the report will be printed in the same order.

## Creating a Duplicate Files Display

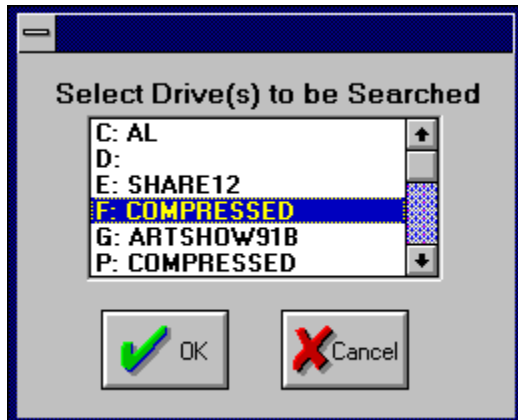
**Tool bar Method:**

Press the Duplicates Button



**Menu bar Method:**

Select Reports|Duplicate Files Display...



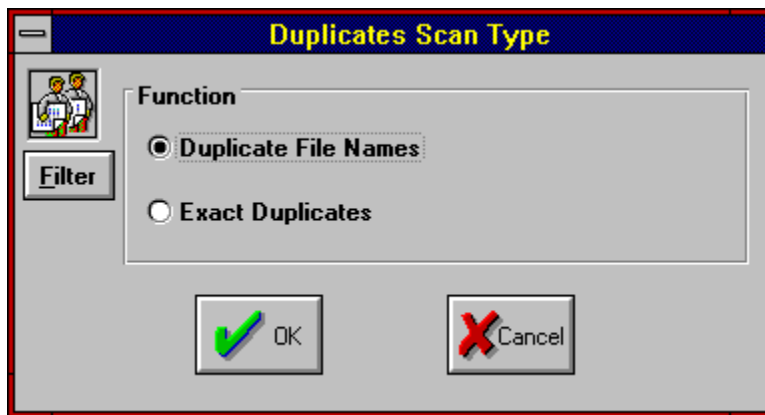
Select the disk drive(s) that you wish to search. Note: If you selected more than one volume, then the entire volume is searched for each selected drive. If you select only a single disk drive, you may confine your search based on a starting directory. Hint: If all of your disk volumes are not showing up in this list, you need to select Default Disk Drives from the pull-down menu (File|Default Disk Drives...).

To select multiple volumes, hold the Control Key (Ctrl) down while using the mouse to click on each desired volume. You may also use the Shift key to select a range. To select a range, highlight the first entry in the list, press the Shift key and use the mouse to select the last entry in the list desired. Another method for selecting items from the list when they are in consecutive order is to drag the mouse across the volume names while holding down the left mouse button.



Select starting directory by selecting the desired disk drive, then selecting the starting point within the directory to begin the map. Press the OK button (or ENTER key) to begin the process. Note: You may create up to 9 Duplicate Files displays at a time.

See Saving a Duplicate Files Display.



Select scan option. Hint: Searching for Duplicate File Names is somewhat faster than running an exact duplicates search. Searching on Content Only can take quite a long time on a large system. You



should consider carefully which type of report you really want. It might be worth your time to experiment with these procedure so that you understand how long a given process is likely to take. Milestones are often noted on the status bar at the bottom of the screen. Limiting the search parameters to exact duplicates eliminates the ability to detect multiple versions of the same file. **Hint:** You can use the Duplicate Files Filter to select only files which match one or more file masking patterns.

## Saving Duplicate Files Display

You may save a Duplicate Files Display for later use. See [Using Saved Files](#)

**Menu bar Method:** Select File|Save...



Select the drive and directory desired and press the OK button. The default file name extension for Saved Duplicate Reports is .DUP. See [Printing a Duplicate Files Display](#).

**Note:** If multiple displays are open, the display which will be saved will be the most recently activated one regardless of which type of display it was. **For example:** If you have a Directory Map on screen and then create a Duplicate Files display and attempt to save, you will be saving the Duplicate Files. To insure that the correct display is saved, you should click somewhere on the Directory Map display itself to make it the current display before you save it. If multiple Duplicate Files Displays are visible, the most recently activated is the current Duplicates Display and will be the one saved.

**Caution:** **Saved Duplicate Files Reports may not be 100% reliable.** When reloaded, the names of the directories, files, file sizes, file dates, and file counts are based upon the view that was in effect when the Duplicate Files Report was saved. If a file is no longer there, you will receive a noncritical error message if you try to manipulate or examine it.

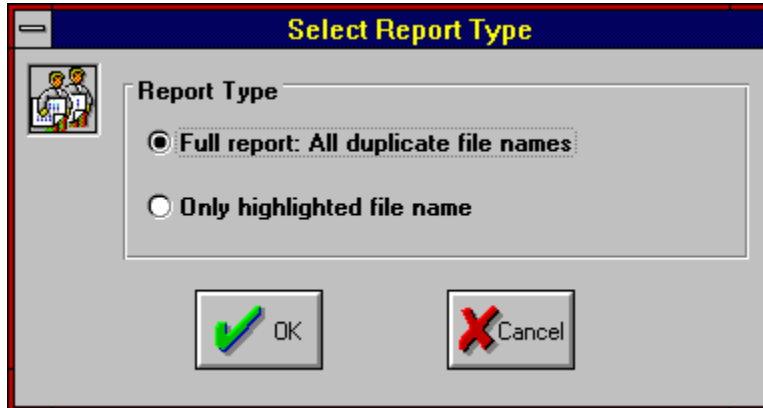
## Printing a Duplicate Files Display

You may print the Duplicate Files Display as a complete report covering all duplicate files or only a single selected file.

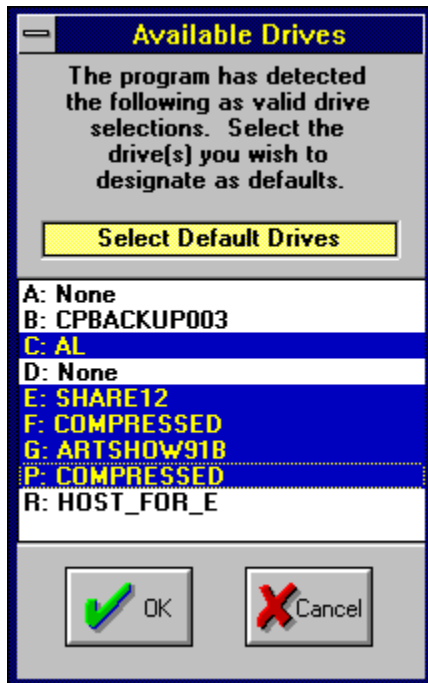
**Tool bar Method:** Press the Print Button



**Menu bar Method:** Select File|Print...



## Default Disk Drives



You may include or exclude specific disk volumes from being searched for a Duplicate Files Display. This can be very handy in network environments where Disk Mapping is used to create search paths and user volumes. It is also likely that you would wish to exclude diskette drives and RAM Drives.

## Drives Found on Your Computer

This is a list of all disk devices which can be found by the program. It is not necessary to have a drive loaded (such as a floppy drive or CD-ROM drive) to detect the device. For performance reasons, you should exclude diskette drives and CD-ROM drives unless you specifically wish to include them in searches.

You should also be careful when selecting network volumes. Search times against large network volumes can be quite time consuming. You should also exclude volumes which are only search paths on the network and not really separate disk volumes.

Ram drives should also be excluded.

## Current Default Drives

These are your current default disk drives. You may pick one or more volumes from this list. To select multiple volumes, use the mouse to select each volume desired while holding down the Control Key (Ctrl). You may select a range of files by selecting the first in the series, pressing the Shift Key, then selecting the last in the series while the Shift key is down. Another method for selecting multiple volumes is to drag across them with the mouse while holding down the left mouse button.



## Duplicate Files: Print Full Report

Select this to produce a printed report of the currently selected Duplicate Files Display which includes all duplicate files found. The report will include all files which had at least two instances found based upon the search parameters used. **Please note:** Depending upon your configuration and the number of files found within the search parameters, this could be a rather long report.

**Note:** The report will be printed using the same sorting sequence used for the display. If the files are listed in descending order by date (e.g. latest at the top), then the report will be printed in the same order.



## Duplicate Names: One File Name Only

Select this to produce a printed report of the only the currently highlighted duplicated file within the current Duplicate Files Display.

**Note:** The report will be printed using the same sorting sequence used for the display. If the files are listed in descending order by date (e.g. latest at the top), then the report will be printed in the same order.



## Sectors

A hard disk is divided up into a series of concentric rings known as tracks. Each ring is broken up into manageable chunks called sectors, separated by small gaps. A sector begins with a unique pattern that enables the disk controller determine where something starts.

## Clusters

A cluster is a unit of storage comprised of one or more sectors. Files always begin on a cluster boundary. For this reason, very small files can take up much more room than you think. In this example, a sector is equal to 512 bytes and a cluster is equal to 8 sectors totally 4096 bytes. If a file contained 766 bytes (typical for an icon file), it would only take two 512 byte sectors to store the file but actually disk usage would be 4096 bytes.

Some disk compression schemes allow files to begin on sector boundaries instead of cluster boundaries. For this reason, it is not impractical to devote some portion of your hard disk as a compressed volume if you have lots of small files to maintain.

**Hint:** If you want to see how much storage is used within a directory beyond the physical size of each file, use the allocation units option (see [Miscellaneous Options](#)) to measure actual usage. As a bonus feature, we've included the ability to tell the program to use a specific allocation unit size for file size calculations regardless of the actual configuration. This is useful in determining whether you should repartition your hard disk. **Note:** This is a complex endeavor for even an experienced user. Make sure you are totally backed up and have a tested boot diskette before attempting to reformat and partition your hard disk.

## Total sectors and clusters on volume

This is the total number of sectors and clusters found on the currently selected disk volume.

## Free Space

This is the amount of disk space remaining on the selected disk drive. If the volume is compressed using a utility such as DoubleSpaced or Stacker, then the number is an estimate based roughly on a 2:1 ratio.

## Total Space on Volume

Total amount of storage space on the selected disk.

**Note:** This figure is somewhat exaggerated because of how files are stored. If a file contained 766 bytes (typical for an icon file), it would only take two 512 byte sectors to store the file but actual disk usage would be 4096 bytes. This is because the volume allocates 8 sectors to each cluster and a file always begins on a cluster boundary. On larger volumes, the cluster size can be as high as 32,768 bytes.

If the volume is compressed using DoubleSpace or Stacker, the total amount of storage is an estimate based upon current usage and estimated remaining available storage.

## Available Disk Drives

You may select which volume to examine by selecting it with this control.

Note: The drives displayed here are dependent upon the drives specified as Default Disk Drives. CD-ROM drives and network drives cannot be examined with this feature but may be used with other portions of the program.



## Delete Directory

Select this option to delete the highlighted directory and all nested directories below. **Please use caution because this is a very powerful feature.**



## Delete Files

Select this option to delete the highlighted file(s) within the currently highlighted directory.



## Files Deleted

Count of files deleted by the program.

## Bytes Deleted

Total number of bytes deleted by the program to date.

## Reset Count

This allows you to reset the count of files and bytes deleted back to zero.

## Depth

Select the desired depth to display within a Directory Map when initially loaded.

## Orientation: Directory Map

Set printer orientation for Directory Maps.

## Orientation: File List

Set printer orientation for File List Report.

## Orientation: Extensions Report

Set printer orientation for Extensions Report.

## Orientation: Duplicate Files Report

Set printer orientation for Duplicate Files Report.



## Storage Calculations

Allocation units are the basis for how data is stored on a hard disk. Unless the drive is compressed using DoubleSpace or Stacker, the allocation unit is the minimum unit allocated when a file is stored. For example: a single 766 byte icon file placed on a disk where the allocation unit is 4096 uses 4096 bytes of storage. The Directory Map has the capability of displaying storage usage based upon actual physical file size or allocation unit totals.

## Delete Confirmations

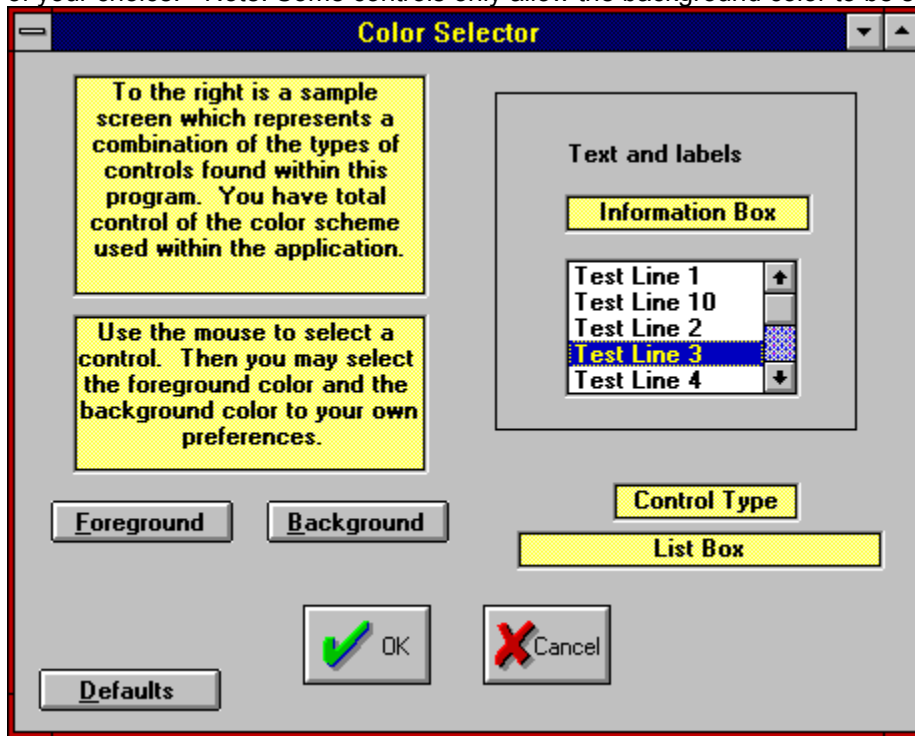
You may disable delete confirmations if desired. Check [here](#) to disable confirmations. The default during installation is to show confirmations.

## Change Colors

Press this button to set custom colors based on user preferences.

## Setting Colors

You can set application colors by first selecting the desired interface element in the box containing the sample controls. Once a control has been selected, you may select background and foreground colors of your choice. Note: Some controls only allow the background color to be set.



## Text and Labels

To set the text and label colors, click [here](#), then select foreground. Select the color desired from the colors chart and select OK. **Note:** Background cannot be set for this screen element.

## Information Box

To set the Information Box colors, [click here](#) and then select foreground. A color chart will be displayed which allows you to select the color desired. Select Background to set the background color.

## Listbox colors

To set the Listbox colors, [click here](#) and then select foreground. A color chart will be displayed which allows you to select the color desired. Select Background to set the background color. Note: This also sets the colors for the Directory Map display.

## Screen Element

This displays the currently selected screen element. Use the Mouse to click within the box above to select the screen element you wish to change.



## Foreground Button

This allows you to select the foreground color of the currently selected screen element.

## Background Button

This allows you to select the background color of the currently selected screen element.

## Default Colors

This allows you to set the foreground and background color of all screen elements back to system defaults.

## Color Selection Instructions

Use the instructions displayed here to set the colors to your own preference.

## File#1 slot is locked

This means that Slot #1 is locked and that selecting another file will place the file in slot #2.

## File Slot#1

This is the slot filled when you select a file to be compared. Unless you lock the slot, you can't compare it to anything else. Exception: If you mark 2 files within the same display before launching the File Comparison Tool, then slot #2 is automatically filled with the second file.

## File Slot#2

You must lock File Slot#1 before you can select files into this slot.

## Compare Results

This area will tell you if the files are identical or not. If they are the same size, it will tell you at what point within the files they are different.



## Lock Slot Button

Locking one slot automatically unlocks the other slot.

## File Differences

The ASCII characters located at the point within the files where they differ.

## Sort: Select Field

Select the field that you wish to sort on and press the OK button. Note: If a selection is not available for the currently selected display, it will be disabled.

## Sort: Select Order

Select the order desired.

## Saving Files

See [Saving a Directory Map](#)

See [Saving an Extensions Report](#)

See [Saving a Duplicate File Names Report](#)

See [Saving a Files List](#)

## Print

You must have one of the primary displays loaded in order to print.

**Tool bar Method:**

Press the Save File Button



**Menu bar Method:**

Select File|Print...

Before printing begins, you will see a dialog box which lists the available reports. Select the report you wish to see.

See [Printing the Directory Map Reports](#)

See [Printing the Extensions Display](#)

See [Printing a Duplicate File Names Display](#)

See [Printing the Files List](#)

See [Printing the Activity Report](#)

## Display and Directory Map Fonts

**Menu bar Method:** Select File|Display Font...

**Menu bar Method:** Select File|Directory Map Font...

You may assign any **screen font** you have to the listbox displays. If you don't select one, MS SANS SERIF will be used.

You may assign any **fixed width font** you have to the Directory Map display. If you don't select one, the current Windows default will be used.

## Printer Font

**Menu bar Method:** Select File|Printer Font...

You may assign any font you have to the reports. If you don't select one, the current Windows default will be used. Note: Column positioning is fixed and use of certain oversized font sizes can cause overlapping.



## Printer Setup

You may select from any of your available printers. Note: Printer orientation is controlled by settings within the program (see Miscellaneous Options) and not by the Printer setup Dialog Box.

## Buttons



Create a Files List Display



Create a Directory Map Display



Create an Extensions Report



Create a Duplicate Files Name Display



Set Miscellaneous Options



Disk Information



Sort selected column in ascending order



Sort selected column in descending order



Move/Copy Files



Display Activity Log



Reduce Maximum number of levels displayed on a Directory Map



Increase Maximum number of levels displayed on a Directory Map



Delete



Split a Directory Map differently



Compare Files



Close all windows belonging to **Space Hound**



Print the current display



Terminates **Space Hound**

## Windows User Group Network

### **Note:   Shareware Pick of the Week**

**Fineware Systems** has chosen The Windows Utility forum (GO [WINUTIL](#)) on CompuServe as the home base for our product. We will visit the the forum every day and will be available for any questions you might have about **Space Hound**. In addition, this is the forum where the absolute latest version of **Space Hound** can be obtained.

### **THE WINDOWS USER GROUP NETWORK**

The Windows User Group Network is the premier international organization for Windows professionals. WUGNET's role is to communicate windows-based technologies and applications to an international audience through the WUGNET forum on CompuServe, conferences, trade shows, publications, trade books, and various membership interactions. WUGNET offers its members a number of technical support tools and support resources designed to save them time and solve quickly problems.

### **THE WINDOWS USER FORUM ON FORUM ON CompuServe**

Windows professionals, from corporate professionals to consultants, communicate in the fastest growing independent technical user forum on CompuServe - The Windows Users Forum (GO [WUGNET](#) or GO [WINUSER](#)). Members of the organization are also provided with access to a private library containing advance reports on trade shows, technical notes, and product appnotes and reviews. [WUGNET](#) maintains an active private beta testing program where members can sign up on line and test new versions of innovative products. [WUGNET](#) works with shareware authors in helping to promote high quality and innovative shareware. THE [WUGNET](#) shareware of the week program, makes available to and informs forum members about the hottest applications to be found on CompuServe. [WUGNET](#) has a long history of working very closely with shareware authors and considers them an integral part of the [WUGNET](#) community.

### **ORIGINS OF THE WINDOWS USERS GROUP NETWORK**

Founded in 1988, as an independent organization, [WUGNET](#) has positioned itself as an industry wide technical resource, rather than as an organization committed to any single vendor or groups of vendors. For five years, the Windows User Group Network has dedicated their efforts to communicating trends and developments, and solutions about the Windows environment on an international level. As a result of the technological changes experienced in the last few years, [WUGNET](#) has evolved into an organization which aggressively promotes the interfacing of existing technologies with new state of the art technologies to create intelligent solutions to today's business problems.

## Scan Type: Duplicate Names

Select this option to create a display which includes all files with more than one instance of the same file name within the search parameters. Files can have different sizes, file date, and time.

## Scan Type: Exact Duplicates

Select this option to create a display which includes all files with more than one instance of the same file name that are also exact matches on file content within the search parameters. Files can have different file date, and time and still qualify as duplicates.

Note: Selecting Exact Duplicates allows you to select a search based on content only (e.g. fileXYZ.txt and FileABC.txt would be found as duplicates if the content of each file was the same as the other file).

## Ordering Online

You may order using CompuServe's Software Registration Service: enter **GO SWREG** at the ! prompt and follow the menus.

**Space Hound Pro's** registration id is **2594**. The indicated price will be **\$37.95** which includes FREE shipping and handling.

**Space Hound Pro's [Netware Edition]** registration id is **4807**. The indicated price will be **\$74.95** which includes FREE shipping and handling.

[Touch Me!](#)

**Note:** Ordering On line via CompuServe is an exceptionally easy way for those users who live outside the United States to pay for Shareware. Shipping is **FREE** anywhere in the World!

## Copyright Notice

Copyright © 1994 and 1995 Fineware Systems and AI Meadows. All rights reserved.



## Registered Version Disclaimer and License Agreement

Users of the registered version of **Space Hound Pro** must accept this disclaimer of warranty:

### **Fineware Systems, Inc.** **License Agreement**

**This is a legal agreement between you the end user, and Fineware Systems. (FINEWARE). By installing the inclosed software, you are agreeing to be bound by the terms of this agreement. If you do not agree to the terms of this agreement, promptly return all diskettes and insure that all installed copies of the software have been deleted for a full refund.**

1. GRANT OF LICENSE. FINEWARE grants you the right to use one copy of the enclosed FINEWARE software program (the SOFTWARE) on a single terminal connected to a single (i.e. with a single CPU). You may not network the SOFTWARE or otherwise use it on more than one computer or computer terminal at a time.

2. COPYRIGHT. The SOFTWARE is owned by FINEWARE and is protected by United States Copyright laws and international treaty provisions. Therefore, you must treat the software like any other copyrighted material (e.g., a book or musical recording) except that you may either (a) make one copy of the SOFTWARE solely for backup or archival purposes, or (b) transfer the SOFTWARE to a single hard disk provided you keep the original solely for backup and archival purposes. You may not copy the written materials accompanying the SOFTWARE.

3. OTHER RESTRICTIONS. You may not rent or lease the SOFTWARE, but you may transfer the SOFTWARE and accompanying written materials on a permanent basis provided you retain no copies and the recipient agrees to the terms of this agreement. You may not reverse engineer, decompile or disassemble the SOFTWARE. If SOFTWARE is an update, any transfer must include the update and all prior versions.

#### **LIMITED WARRANTY**

LIMITED WARRANTY. FINEWARE warrants that the original disk are free from defects for 90 days from the date of delivery of the SOFTWARE.

CUSTOMER REMEDIES. FINEWARE'S entire liability and your exclusive remedy shall be, at FINEWARE'S option, either (a) return of the price paid or (b) replacement of the SOFTWARE which does not meet FINEWARE'S Limited Warranty and which is returned to FINEWARE with a copy of your receipt. Any replacement SOFTWARE will be warranted for the remainder of the original warranty period or 30 days, whichever is longer. THESE REMEDIES ARE NOT AVAILABLE OUTSIDE OF THE UNITED STATES OF AMERICA.

**NO OTHER WARRANTIES. FINEWARE disclaims all other warranties, either express or implied, including but not limited to implied warranties of merchantability and fitness for a particular purpose, with respect to the SOFTWARE and the accompanying written materials. This limited warranty gives you specific legal rights. You may have others which vary from state to state.**

**NO LIABILITY FOR CONSEQUENTIAL DAMAGES. In no event shall FINEWARE or its suppliers be liable for any damages whatsoever (including, without limitation, damages for loss of business profits, business interruption, loss of business information, or other pecuniary loss) arising out of the use of or inability to use the SOFTWARE, even if FINEWARE has been advised of the possibility of such damages. Because some states do not allow the exclusion or limitation of liability, for consequential or incidental damages, the above limitation may not apply to you.**

This agreement is governed by the laws of the State of Oklahoma.

## Launching Files and Documents

You may launch programs as well as documents which have been associated with programs from any list which contains files. This includes the file list to the right of the Directory Map, Extensions, and the Duplicate File Names Display.

You should refer to the Windows File Manager's HELP file for documentation on file associations.

### How To launch a file or document

Method 1:

- Highlight the file desired
- Press the Right Mouse Button while the mouse pointer is within the file list borders

Method 2:

- Double Click the application's icon when it appears to the right of the CANCEL Button.



## Viewing Files

(**Space Hound Pro** ONLY Feature)

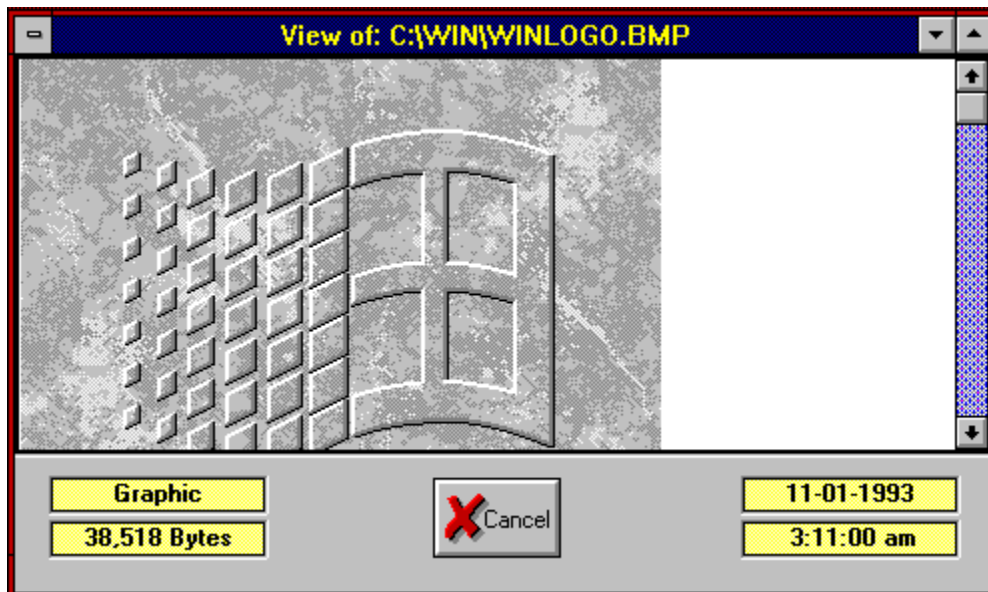
You may view any file on your computer with **Space Hound Pro's** versatile file viewer.

### How to view files:

- Highlight the file(s) you wish to view within any of the displays which feature file list. This includes the Directory Map, Extensions, and Duplicate File Names Displays. You may highlight multiple files.
- Press the File Viewer button (Pictured above).

**Note:** You may launch a single file viewer by simply double clicking on the file entry within the list box.

This is a sample Viewer screen. The document being viewed is one of the bitmapped image files which ships with Windows. Space Hound includes the ability to mark a rectangular section of a graphic in order to copy it to the Windows Clipboard. Text formats can also be copied.





## Viewer Content Window

This area displays the contents of the selected file. The format used will depend upon the type of file displayed. If the file is not one of the types recognized by the program, the file will be displayed in Hexadecimal format. Executable programs and dynamic link libraries are always displayed in Hex.

## Viewer Type

This describes the type of file viewer in use.

## Viewed File Size

Number of bytes within the file being viewed.

## Viewed File Date and Time

DOS file date and time of the viewed file.

## Internal File Version Number

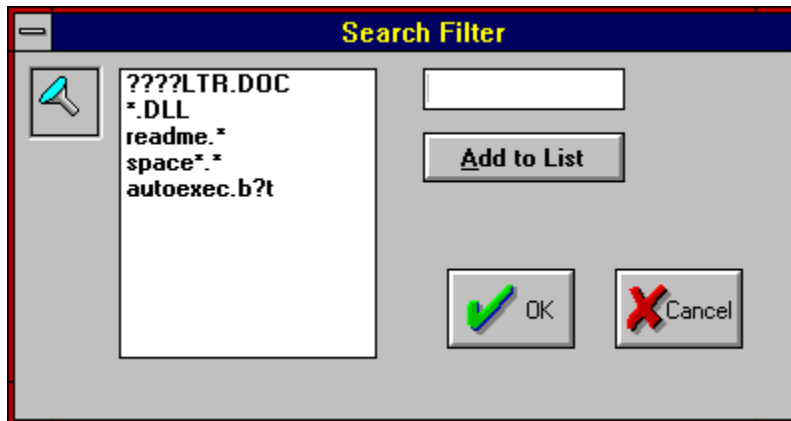
This is the version number stored within the file. It is useful for determining which instance of a file is the latest without having to rely on the DOS date & time stamp.



## Keyboard

<b>Tab</b>	Moves to the next command button, list box, text box, check box, or group of option buttons.
<b>Shift+Tab</b>	Moves to previous list box, text box, check box, command button, or group of option buttons.
<b>Arrow keys</b>	Move down file list or within group of option/command buttons.
<b>Space bar</b>	Chooses active command button or turns active check box on or off.
<b>F1</b>	Displays context sensitive help.
<b>F10</b>	Activates menu bar.
<b>Alt+F4</b>	Closes <b>Space Hound</b> .
<b>Ctrl+F</b>	Displays initial dialog for creating a Files List Display.
<b>Ctrl+M</b>	Displays initial dialog for creating a Directory Map Display.
<b>Ctrl+D</b>	Displays initial dialog for creating a Duplicate Files Display.
<b>Ctrl+E</b>	Displays initial dialog for creating an Extensions Display.
<b>Ctrl+P</b>	Displays dialog for printing the current active display.
<b>Ctrl+O</b>	Displays the Miscellaneous Options Dialog.
<b>Shift+F4</b>	Cascade open windows.
<b>Shift+F5</b>	Tile open Windows.
<b>Delete</b>	Delete highlighted files.
<b>Enter</b>	Chooses active command button.
<b>Esc</b>	Cancels command and closes dialog box.

## Duplicate Files Filter



You may limit the scope of your duplicate files search to files which equal specific file names or file name masks using wild cards. You may add as many file names or mask as you desire. Examples of some how mask characters are used as wild cards appears in the illustration.

A wild card is a character that represents any character or group of characters that might match the same position in other filenames. The question mark (?) wild card can be used to represent any single character and the asterisk (\*) wild card can be used to represent more than one character. For example \*.EXE represents all files that end with the .EXE extension.

## Filter Button

You may use this button to bring up the Duplicate Files Filter. This will allow you to select only files which match a certain criteria. For example: \*.EXE would limit the search to files ending with the extension EXE.

## Search List

List of file names or file name masks which are to be used in the search.

## Add to List

Press this button to add the contents of the text input box to the search list. Hint: If the text box contains information, pressing the ENTER Key will perform the same function.

## Text Input Box

Place the file name of mask desired here and press the Add To List button with the mouse or use the ENTER key.

# Oakley Data Services Ordering Info

Ver 1.77

**Note:** Select "File-Print Topic" from the menu bar to print this form.

You can order **Space Hound** or **Space Hound Pro** by Phone, Mail, E-mail or Fax with payment by credit card.

Oakley Data Services,  
3 Oakley Close,  
Sandbach,  
Cheshire CW11 9RQ,  
England.

Call +44 (0)270 759739  
Fax +44 (0)270 765272  
CIS: 74774,1347

**Space Hound** or **Space Hound Pro** (Circle **ONLY** one)

Name: \_\_\_\_\_

Company: \_\_\_\_\_

Address: \_\_\_\_\_

: \_\_\_\_\_

: \_\_\_\_\_

: \_\_\_\_\_

: \_\_\_\_\_

Telephone Number: \_\_\_\_\_

Credit Card Type: \_\_\_\_\_

Credit Card Number: \_\_\_\_\_

Expiration Date: \_\_\_\_\_

Signature: \_\_\_\_\_

(unless otherwise requested we ship a 3.5" HD disk)

<b>Space Hound PRO</b>	23.00	_____
<b>Space Hound PRO [Netware Edition]</b>	45.00	_____
Shipping/Handling - US or Canada	2.00	_____

**UK** and **EEC** add 17.5% **VAT**

<b>Space Hound PRO</b>	4.38	_____
------------------------	------	-------

<b>SH PRO [Netware]</b>	8.23	_____
-------------------------	------	-------

Total in **Pounds Sterling**: \_\_\_\_\_

By the way, where did you initially hear about **Space Hound**: \_\_\_\_\_

## Site License

(Ver 1.75)

**Site licenses must be obtained directly through Fineware Systems.**

You can order a site license for **Space Hound Pro** by mail with payment by check or money order.

A Site License entitles you to make copies of an original diskette up to the limits of your site license and distribute them within your organization. You may not distribute copies outside of your company.

**Space Hound Pro** or **Space Hound Pro [Netware Edition]** (Circle One)

Name: \_\_\_\_\_  
Company: \_\_\_\_\_  
Street: \_\_\_\_\_  
Street: \_\_\_\_\_  
City: \_\_\_\_\_  
State: \_\_\_\_\_ ZIP: \_\_\_\_\_  
Country: \_\_\_\_\_  
Telephone Number: \_\_\_\_\_

Credit Card Type:    Visa    MasterCard    AMEX

Credit Card Number: \_\_\_\_\_

Expiration Date: \_\_\_\_\_

Signature: \_\_\_\_\_

Unless otherwise requested we ship a 3.5" HD disk)

<u>Rate Schedule</u>	<u>Space Hound Pro</u>
2 to 10 copies	\$37.95 + Quantity over 1 at \$28.00 each
10 to 20 copies	\$289.95 + Quantity over 10 at \$21.00 each
20 to 100 copies	\$499.95 + Quantity over 20 at \$16.00 each
100 or more	\$1,779.95 + Quantity over 100 at \$10.00 each

<u>Rate Schedule</u>	<u>Space Hound Pro (Netware Edition)</u>
2 to 10 copies	\$74.95 + Quantity over 1 at \$42.00 each
10 to 20 copies	\$415.95 + Quantity over 10 at \$29.00 each
20 to 100 copies	\$705.95 + Quantity over 20 at \$18.00 each
100 or more	\$2,145.95 + Quantity over 100 at \$12.00 each

**Note:** If you wish Fineware to provide individual installation diskettes, please add \$1.50 per unit ordered.

**Space Hound PRO** or **SH Pro [Netware]** Qty \_\_\_\_\_ Extended \_\_\_\_\_  
**Oklahoma** residents add 8.375% sales tax \_\_\_\_\_  
Shipping/Handling - US or Canada \$ Free \_\_\_\_\_  
Shipping/Handling - Outside of US/Canada \$ Free \_\_\_\_\_

Total in **US Funds** drawn on a **US Bank** \_\_\_\_\_

Make checks payable to: **Fineware Systems**



**Mail to:**

Fineware Systems

P.O. Box 75776

Oklahoma City, Ok. 73147

By the way, where did you initially hear about **Space Hound**: \_\_\_\_\_

## Directory Map Features

- Directory Map may be started at any level, not just root.
  - Storage totals at each directory plus nested sub directories.
  - File counts for each directory plus nested sub directories in the printed report.
  - Sizable split between Directory Map and File Listing with choice of display orientation.
  - Displays can be saved and later reloaded for further evaluation and action.
- Great for finding forgotten and buried files!**

## Duplicates Display Features

- Three distinct duplicate file search functions:
  1. Search for duplicate names. This is useful for finding files which have the same name but are different in size such as a DLL at version 1.0 and a DLL at version 1.1 might be.
  2. Search for duplicate names that are identical. This is probably the best search to run first because it limits the number of duplicate files to those which are truly identical to other files.
  3. Search for duplicate files. This variation ignores the file name and searches using CRC checking to identify duplicates based on content only.
- Collects all duplicates in a single pass
- Printed report including all duplicates found or on single duplicate name only.
- Storage totals and file counts displayed by duplicate name.
- Each search allows for the use of a filter which can limit the search to a set of specific file names or wild card patterns (Example: \*.txt or Memo????.\*).

**This is probably the best duplicate file finder available today!**

## Extensions Display Features

- Collects all extension types in a single pass.
- Printed report including all extensions or a single extension only.
- Storage totals and file counts by extension.

**Great for managing lots of documents and exploring!**

## Features Common to all Displays

- Up to nine windows of each type of the displays can be loaded at one time.
- Hard copy reports of complete or just partial information if desired.
- Screen and hard copy listings sorted in a number of ways.
- File type identification on supported formats displayed on the status bar.
- Files can be compared at the bit-level to test for duplicates.
- Version and file identification information is extracted and displayed on the status bar when a file is clicked on.
- Resource utilization (USER, GDI, & SYSTEM) is displayed on the application's status bar as well as remaining available Windows memory.
- Icon extraction for each file linked to File Manager associations. Either the icon for the application itself or the icon for the application associated with the file is displayed at the bottom of each display window.
- Files may be deleted from the hard disk from any display (Note: Deletion statistics are tracked so that you may see the total space recovered by the program over time).
- Files may be copied or moved from any of the major displays.
- An extremely powerful extract capability for extending the product's functionality

## How to use Space Hound Help

This help file has been designed using screen images taken from the program. Its goal is to be the primary method for providing assistance and understanding about the operations and features of Space Hound. Use the mouse to move over the sample image below. You will see that the mouse cursor changes into a pointing finger. When you see this occur over an image, you may click on the image to display additional information. Note that some images have multiple areas which can be examined. In the example below, three areas are **HOT** and will display information when activated by clicking on them with the mouse.



## Starting Directory Files

The files for the current highlighted directory are provided as an aide for determining the correct starting point. You may not view, move, launch, copy, or any other function with them.

## Starting Directory Slider Control

Used to change the size of the split between the directory side and the files within the highlighted directory.

Position the mouse over the control, hold down the left mouse button and the slider will turn red. Move the mouse to the right or left until the window displays the information the way you want it.



## Thanks for looking at Space Hound

I wish to thank you for evaluating my product. It is only through continued registrations that professional shareware authors can continue to produce software of this quality.

Al Meadows  
Program Author  
Fineware Systems

## Upgrading to Latest Version

**Space Hound Pro** will be continually upgraded to add features and correct programming errors as they are detected. In addition, changes to the underlying operating systems may make some features of the program redundant while creating new capabilities that can be enhanced by the program.

**The policy of Fineware Systems on upgrades to registered users is as follows:**

If you are already a registered user of **Space Hound Pro**, you may be able to update your existing registered version to the latest edition by simply downloading the most recent version while retaining the program's registered features. As program errors and bugs are detected and resolved, Fineware will make available additional releases on the main commercial services such as CompuServe, America Online, Prodigy, and the Microsoft Network. In addition, you can always obtain the most recent version of all of Fineware's products by connecting to our Internet World Wide Web site. The address is [ <http://www.fineware.com> ]. **Note:** Viewer Upgrades: See Peeper

If your **registered version** is **1.57** or later (See the About Box within the program), then you can update your existing copy to the new version as long as the version number on the new release is **1.99 or less**.

Note: See Caution

**To update an existing installation, simply replace all existing files with any which are included within the zipped file.**

If your registered version is **1.56** or earlier, you must obtain a small file from Fineware Systems first.

To obtain this file, you will need to contact Fineware Systems. Note: Your registration must be on file. If you obtained the registered version of **Space Hound Pro** from Fineware Systems or one of our agents by placing an order, then you are probably registered. If you have any doubt about your registration, simply photocopy your software license and forward it to Fineware Systems.

If you can receive files via **CompuServe** or **America Online**, then there will be no additional expense. Simply contact us with your E-mail address and we will send you the file and instructions on how to install it. If you do not have access to these two commercial online services, then we must provide you with diskettes via regular US Mail.

There is a \$5.00 Shipping/Handling charge for this service. You will receive a complete set of install disks for the latest release. Once your version is **1.57** or later, you will not need to contact us again for updates until after version **2.xx** has been released.

Site license holders should contact Fineware Systems for a price quote.

## Shareware Pick of the Week

**Space Hound** was named Shareware Pick of the Week during July, 1994 by the Windows User Group Network.

## Associated Icon

Icon contained within the file itself or the icon of the application program which has been associated with the highlighted file.

**Hint:** Double\_Clicking on this icon in **Space Hound Pro** will launch the application.

## File List Features

- File List may be started at any level or may be processed on multiple full volumes.
- Use selection filters to report based on multiple file mask patterns. (i.e. \*.VBX & \*.DLL)
- Report can be saved and later reloaded for further evaluation and action.

**Great for reviewing all of your files by size or date!**

## Sort Operation Buttons



Ascending Sequence



Descending Sequence

## Sort by Column

You may sort the display in either ascending or descending sequence by selecting the desired column and pressing the sort operation buttons.

## Extension List File Count

Total number of files returned by the search for each extension within the list.



## Extension List File Size Total

Total sizes in bytes of the files with a given file extension.

## Extension Report Slider Control

Use the slider control to adjust the viewing window between the list of extensions and the list of files with the highlighted extension.

## Count of Duplicate Files

Number of duplicate files found with this file name.

## Size of Duplicate Files

Combined size of all duplicate files found with a specific name.

## Duplicate Files Slider Control

Use the slider control to adjust the viewing window between the list of duplicated files and the list of files found belonging to the highlighted file name.



## File List Display

Similar to the Windows File Manager's File Search result in appearance, its goal is to provide a full system search and display without the limitations imposed by the Windows File Manager.

You may use this tool to process against multiple volumes.

### **Additional Topics**

See [Creating a Files List Display](#)

See [Files List](#)

See [Saving a Files List](#)

See [Printing the Files List](#)

## Creating a Files List Display

Tool bar Method:

Press the Files List Button



Menu bar Method:

Select Reports|File List Display...



Select the disk drive(s) that you wish to search. **Note:** If you selected more than one volume, then the entire volume is searched for each selected drive. If you select only a single disk drive, you may confine your search based on a starting directory. **Hint:** If all of your disk volumes are not showing up in this list, you need to select Default Disk Drives from the pull-down menu (File|Default Disk Drives...).

To select multiple volumes, hold the Control Key (Ctrl) down while using the mouse to click on each desired volume. You may also use the Shift key to select a range. To select a range, highlight the first entry in the list, press the Shift key and use the mouse to select the last entry in the list desired. Another method for selecting items from the list when they are in consecutive order is to drag the mouse across the volume names while holding down the left mouse button.



Select starting directory by selecting the desired disk drive, then selecting the starting point within the directory to begin the map. Press the OK button (or ENTER key) to begin the process. **Note:** You may create up to 9 Files List displays at a time. See Saving a Files List Display.

## Files List

Point to the areas on the screen with the mouse to see a description of each area.

You may also sort the results of the search as desired. Sorting is performed by selecting a column and pressing one of the sort operation buttons on the toolbar.

If you sort the list by file size, descending, then the report will be printed with the largest file at the top.

File Name	Ext.	File Size	Date	Time	Path Name
GRAPH5	EXE	1,505,984	3/7/94	6:50:56 PM	C:\WIN\MSAPPS\MSGRV
<b>ENCART94</b>	<b>EXE</b>	<b>1,342,976</b>	<b>11/3/93</b>	<b>12:00:00 PM</b>	<b>C:\ENCARTA\</b>
TOPICS94	LST	1,274,340	11/3/93	12:00:00 PM	C:\ENCARTA\
PHON	DAT	1,136,442	1/1/92	3:51:48 PM	C:\MV\PROSPEAK\
CRPE	DLL	1,122,000	8/23/94	12:00:00 PM	C:\WIN\SYSTEM\
MSAJT200	DLL	1,063,680	8/23/94	12:00:00 PM	C:\WIN\SYSTEM\
ORGCHART	EXE	991,168	2/11/94	12:00:00 PM	C:\WIN\MSAPPS\ORGCH
MFC0250D	DLL	967,056	11/23/93	4:01:00 PM	C:\WIN\SYSTEM\

Items: 2,954      Cancel      Size: 165,291,513

Dynamic Link Library      Encarta '94 main executable (File Ver:2.12.0.22 Product Ver:2.12.0.22)



## Saving a Files List

You may save a Files List Display for later use. See [Using Saved Files](#)

**Menu bar Method:** Select File|Save...



Select the drive and directory desired and press the OK button. The default file name extension for Saved Duplicate Reports is .DUP. See [Printing a Files List Display](#).

**Note:** If multiple displays are open, the display which will be saved will be the most recently activated one regardless of which type of display it was. **For example:** If you have a Directory Map on screen and then create a Duplicate Files display and attempt to save, you will be saving the Duplicate Files. To insure that the correct display is saved, you should click somewhere on the Directory Map display itself to make it the current display before you save it. If multiple Files List Displays are visible, the most recently activated is the current Files List Display and will be the one saved.

**Caution:** **Saved Files List Reports may not be 100% reliable.** When reloaded, the names of the directories, files, file sizes, file dates, and file counts are based upon the view that was in effect when the Duplicate Files Report was saved. If a file is no longer there, you will receive a noncritical error message if you try to manipulate or examine it.

## Printing the Files List

**Tool bar Method:**

Press the Print Button



**Menu bar Method:**

Select File|Print...

## Files List: File Names

Names of the files found by the search.

## Files List: File Sizes

Size in bytes of each individual file.

## Files List: Date and Time

Date and time created or last modified for each file within the list.

## Files List: Path Name

Disk volume and directory that contains each file.

Files List: List Count

Total number of items within the list.

## Files List: Combined Size

Total size of all files within the list.



## File Type

Some file types are recognized by Space Hound. If the file type can be determined, it will be displayed in this status box area.

## File Description

Some files contain embedded file descriptions and version information. If possible, Space Hound extracts this information and displays it on this status bar.



## Activity Report

Provided as an aide in managing your hard disk. [Only operations performed by Space Hound are recorded.](#)

The Activity Log records the name of the file or directory when a delete request is processed by Space Hound. In addition to deletes, file moves and copies are also recorded.



Selecting the Trash Can Icon deletes the existing activity log and begins a new log.

### Additional Topics

See [Creating an Activity Report Display](#)

See [Printing the Activity Report](#)

## Creating an Activity Report

**Tool bar Method:**

Press the Files List Button



**Menu bar Method:**

Select Reports|Activity Log...

## Printing the Activity Report

**Tool bar Method:**

Press the Print Button



**Menu bar Method:**

Select File|Print...

## Caution

Most of the files required by **Space Hound Pro** are to be found within the downloads which will be available on commercial on line systems and Bulletin Board Systems. A notable exception to this is the file viewer component of **Space Hound Pro**. Fineware cannot guarantee that a future version of **Space Hound Pro** will work with your existing viewers. If this situation arises, you will need to obtain a diskette containing the new viewer files from Fineware.

Prior to the release of version 1.63, a version of **Space Hound** was sold that excluded some of the Pro features. Users of the registered version of **Space Hound** 1.62 or lower will need to contact Fineware Systems. As a courtesy, Fineware will allow existing customers of the "**standard**" version of **Space Hound** to upgrade at a very low cost. How much will depend upon the access you have to online services. The cost could be ZERO! Contact Fineware for details.

# CopyCats Order Form

Netherlands, Germany, Belgium

(Ver 1.7)

**Note:** Select "File-Print Topic" from the menu bar to print this form.

Users in Holland, Germany and Belgium who prefer to order locally and pay in their own currency, can order Space Hound Pro through CopyCats in Holland. Please fill out this form and send it, along with payment, to:

## CopyCats

CopyCats Software & Services

Postbus 1088

Phone / Fax: +31 (0) 2207 45993

1700 BB Heerhugowaard

(after 10/10/95: +31.72.5745993)

The Netherlands

E-mail 100121.1562@CompuServe.com

## Space Hound Pro

Name: \_\_\_\_\_

Company: \_\_\_\_\_

Address: \_\_\_\_\_

Country: \_\_\_\_\_

Phone: \_\_\_\_\_ Fax: \_\_\_\_\_

BTW/Steuer # (German and Belgian businesses): \_\_\_\_\_

(unless otherwise requested we ship a 3.5" HD disk)

### Pricing:

**Space Hound PRO:** Dfl. 79,95 DM 70 1575 BEF

**Space Hound PRO [Netware Edition]:** Dfl. 159,95 DM 1402995 BEF

(prices include shipping and 17.5% BTW / MwSt / VAT)

### Please send me:

Qty.	Description:	Price:	Total:
_____	Space Hound PRO	_____	_____
_____	Space Hound PRO [Netware Edition]	_____	_____

Order Total: \_\_\_\_\_

Signature: \_\_\_\_\_ Date: \_\_\_\_\_ - \_\_\_\_\_ -19\_\_\_\_

### Method of payment (tag one):

- ☐ Enclosed Eurocheque, bankcheque or betaalkaart/Zahlkarte
- ☐ NL: Overgemaakt aan Postbank 43.28.577
- ☐ D: Überwiesen an Postbank Saarbrücken Kto.-Nr. 556 33-666 BLZ 590 100 66
- ☐ B: Overgemaakt aan Postcheque 000-1656064-80
- ☐ Op rekening / Auf Rechnung (Business/Government only).

By the way, where did you initially hear about **Space Hound**: \_\_\_\_\_

And where did you obtain your copy of **Space Hound**: \_\_\_\_\_

***Dank u voor uw bestelling! - Vielen Dank für Ihren Auftrag!***



## Exporting

You may export the contents of the Files List Display, Extensions Display, or the Duplicates Display.

The export is in the form of comma delimited ASCII and is suitable for importing into products such as Microsoft Excel or Microsoft Access.

### Specific instructions for exporting to Microsoft Access [\(using MS Access Ver 2.0\)](#)

- Create the exported file by launching one of the **Space Hound** displays such as the [Files Display](#). When the display is on the screen, you may process the export.

- Press the Export Button (pictured below). You will be prompted to provide a file name and directory for the exported file. Type a file name (such as MyExport). The file name will default to a .TXT file extension (example: MyExport.TXT).



- Launch Microsoft Access and either open an existing database or create a new one.

- From the File Menu, choose Import.

- Select Text [Delimited]

- Use the file open dialog box to select the file created by **Space Hound** in the steps above (example MyExport.TXT).

- While the file is highlighted, press the IMPORT button.

- The Import Text Options dialog will appear. Select the check box "First Row Contains Field Names" and choose "Create New Table".

- Press the OK button and the import will be processed. Refer to your Microsoft Access documentation for additional information and help.

## Netware Extensions

A special edition of **Space Hound Pro** is available for use on Novell Networks. The additional features include the addition of six Netware specific fields to all program displays and reports. This includes the ability to sort on these columns. The fields are as follows:

- Ownership (based on Login Name)
- Updated By (based on Login Name)
- Modified Date
- Last Accessed Date
- Archived Date
- Date Created

### **Availability and pricing:**

The Netware Extensions edition is available now. Existing registered users of Space Hound Pro may upgrade to the Netware edition at any time for \$40.

## Tips and Tricks

**Question:** I have multiple copies of files. How do I know which ones I can delete?

**Answer:** There is no foolproof way to know which files are safe to delete. I will not refer to duplicate *documents* because there are no options other than comparing the file date stamp to guide you. Common Windows file types such as .DLLs and .VBXs contain embedded version information. Using **Space Hound**, you may view basic version information on the status bar of the current display while the file name is selected. It is normally safe to assume that the latest version is the one to keep.

**Question:** I have found multiple copies of files. One of them is in my Windows\System directory. The other one is within an application's directory. They are both identical. Which one should I keep?

**Answer:** Files within the Windows\System directory can be seen by all of your applications. It is safe to remove a duplicate when an identical version is contained within your Windows\System directory.

**Question:** I have found duplicate files in two different applications directories. One of the files is a newer version than the other. What should I do?

**Answer:** It is normally safe to move the newest version to the Windows\System directory and remove the older version.

**Question:** I am worried about deleting an older version of a file that is used by one of my programs. How do I know that the newer version I moved to the Windows\System directory will work with both applications?

**Answer:** Dynamic Link Libraries (.DLL files) are normally 100% backward compatible. A newer version may contain additional routines and functionality but older routines are generally left alone. This allows the newer version to continue to work fine for older programs while giving extended services to newer programs.

**Question:** I still have concerns about deleting some of these files. What do you suggest?

**Answer:** First, if you discover that an older program has problems using newer components, you should contact the company that released the package and inquire about an update. This type of problem would indicate that there were problems in the original program all along but they had been masked by other problems in the original .DLL file. However, it is not a bad idea to simply copy files to diskettes instead of totally deleting them. This way you're free of them and you still have them. A few diskettes used this way is not a great price to pay for "insurance".

## Known Problems

**Common installation problems:** Many of today's applications include components from other 3rd party distributors. These components are like snap-together parts. When an application is initially designed, the programmer is probably using the latest version of all of the components his application needs. Over time, these components may be enhanced to include new features and capabilities. A frequent problem occurs when a newer application makes use of features that were not available in earlier version of the software. This can cause problems when multiple versions of these components exist on your computer. Please refer to the following list of files and eliminate older version if possible.

- ◆ APIGUIDE.DLL
- ◆ MHRUN500.DLL
- ◆ CMDIALOG.VBX
- ◆ MHGCMD.VBX
- ◆ MHTAB.VBX
- ◆ MHTR200.VBX
- ◆ MHVIEW.VBX
- ◆ MUSCLE.VBX
- ◆ THREED.VBX
- ◆ SSDATA2.VBX

### Other Common Problems:

**SYMPTOM:** Attempts to run any of the reports or displays cancels the program all the way to the DOS prompt.

**CURE:** Your autoexec.bat file contains a line for the CD-ROM driver called MSCDEX. This line ( or a preceding line) may contain a parameter which is causing the problem. Check for /S on the MSCDEX line. If it is there, remove it. It's only function is to allow multiple PCs to share a CD-ROM drive over a Windows for Workgroups network. If the /S appears in the preceding line, try rearranging the order of the lines in autoexec.bat so that this line doesn't directly preceded the MSCDEX line.

**SYMPTOM:** A GPFault occurs when you launch the program. Normally, this will be the result of a conflict with some aspect of Space Hound and your video card. The module that reports the fault will have a file extension of .DRV and most likely, you will be using a driver with more than 256 colors.

**CURE:** Make sure that you are using the latest driver. Contact your video card manufacturer. If this does not fix it, try adjusting the number of colors used up or down as well as adjusting the resolution. If this still does not correct the problem, use the standard VGA drivers which ship with Windows. One option you might wish to try is to add the following lines to the SPACEHND.INI file which is located within the application's directory.

```
[Toolbar]
Visible=0
```

```
[Statusbar]
Visible=0
```

These settings disable the toolbar and status bar. Both of the screen elements contain graphic images and they could be the source of your screen driver problems.

**SYMPTOM:** Attempts to print cause a GPFault or subsequent errors are see in standard Windows components. An example is getting a Divide by Zero error when you attempt to launch Windows WRITE.

**CURE:** You are probably using a postscript printer driver or other 3rd party print spooler. The only work around is to use the miscellaneous options and set the Printer bypass option under the Miscellaneous tab.. Should this error occur, the method to restore your system to normal functionality is to remove your current printer driver (via the Windows Control Panel) and Re-install it.



## Peeper

**Peeper** is a well received product which is distributed as shareware. It's primary function is to allow the user to rapidly move about the hard disk using the built in file viewers. Multiple files may be displayed at the same time.

### Regarding Space Hound upgrades

The file viewer component of **Space Hound Pro** is not distributed with the shareware version of Space Hound. This is because the viewers may not be utilized in the shareware version. Including them would force a shareware evaluator to download a significant amount of non-essential bytes.

From time to time, improvements will be made to the file viewer components. Unless you are experiencing a problem, it is probably not necessary to upgrade your viewers every time a new release of **Peeper** is made available. You should contact [Fineware Systems](#) if you have any questions on whether you should upgrade your existing viewers.

## P. & A. Shareware

Fineware programs can be registered locally in Japan. For more detail and information on prices, etc. contact:

### P. & A. Shareware

1-3-6-2 Kamisunacho  
Tachikawa, Tokyo 190 Japan

Tel: 0425-35-9901  
Fax: 0425-35-9902

Nifty: PAF02461

## Glossary



8.3 DOS file name

---

### A

application's directory  
application's disk  
associated

### C

current display

---

### D

disk file storage

---

### E

exact duplicates

---

### F

Fineware Systems

---

### G

GO WORD

---

### H

HOT

### L

launch

---

### M

masks  
MSAPPS

---

### N

nested sub directories  
Note: Consider Space Hound Pro

---

### O

orientation

---

### P

processes  
programs  
PsL



-  
**R**

Ram drives

**S**

search parameter  
search parameters  
search paths  
sniff out

-  
**U**

unregistered version

### **8.3 DOS file name**

DOS naming convention. A file name can consist of a name (from 1 to 8 characters) a period and an extension (from 0 to 3 characters).

**application's directory**

Directory where Space Hound's executable module (SPACEHND.EXE) is located.

**application's disk**

Disk where Space Hound's executable module (SPACEHND.EXE) is located.

**associated**

Windows establishes file associations with certain types of file extensions. .TXT files are normally associated with the NOTEPAD.EXE applet which is shipped with Windows. Other applications will also register the file extension names commonly used by the application.

**current display**

This refers to the most recently activated primary display such as a Map Display, and Extensions Display, or a Duplicate File Names Display.

**disk file storage**

This total is based upon a user selected option within the program. The numbers will represent a total based on bytes or allocation units.

**exact duplicates**

Exactly the same content, shares the same name but may have a different file date and time.



**Fineware Systems**

P.O. Box 75776

Oklahoma City, Ok 73147

Technical support via Commercial Online Services:

CompuServe ID: 70650,2022 (Al Meadows)

Prodigy ID: BBTK05A (Al Meadows)

America Online ID: VB AL (Al Meadows)

**GO WORD**

A GO word allows you to transfer from one location to another while online with CompuServe. It is used by typing GO xxxxxx (the go word) at any "!" Prompt.

**HOT**

Hot Spot: Area within a graphic image that when clicked, displayed information about the image or about that part of an image.

**launch**

This mean run or execute.

**masks**

Allows wildcard matching on file names.

**MSAPPS**

MSAPPS is frequently used to store components from various Microsoft applications which can be shared between multiple Microsoft applications such as Microsoft Word and Microsoft Excel.

**nested sub directories**

A directory is not a fixed amount of disk storage nor does it physically begin and end on any hardware based boundary. A directory can contain files. A directory can also contain other directories. The term nested sub directories refers to the set of directories within a particular parent directory. Nesting directories can greatly simplify management of your hard disk by allowing distinct categories of data. An example might be to create a directory into which all of your spreadsheet documents would be placed. Please refer to your Windows documentation or the Windows Program Manager HELP file for instructions on creating new directories.

**Note: Consider Space Hound Pro**

Contains a powerful file viewer with support for over 20 file formats including ASCII, HEX, PCX, TIF, GIF, BMP, WMF, ICON, Microsoft Word, WordPerfect, AMI PRO, xBase, Paradox, Lotus, Excel, ZIP, LZH, Quattro Pro, MetaFiles, Q&A, Windows Write, and Microsoft Works. (New viewers are added from time to time and support for newer file formats updated as soon as possible.)

Also may include additional features not yet defined.



**orientation**

Portrait or landscape. Portrait is the normal setting for letters, landscape is more often used for reports.

**processes**

An event which takes over the operation of the program. The mouse pointer will turn into the hourglass image during this period and the menu items and toolbar buttons will not function. You may continue to use other Windows applications while a process is underway. An example of a process is the creation of a directory map. The time to completion depends upon the number of directories, the level of nesting used within the directory structure, and the number of files being processed.

**programs**

In general, files with the extension following extensions:

.EXE

.BAT

.COM

.PIF

are considered programs and may be launched by Space Hound Pro.

**PsL**

Public (software) Library

P.O. Box 35705

Houston, TX 77235-5705

**Ram drives**

A drive created from memory. Please refer to your DOS or Windows manuals for information on creating and using Ram Drives.

**search parameter**

Selected limits which qualify the drive(s) and/or starting directory to be used in producing the reports and displays.

**search parameters**

Selected limits which qualify the drive(s) and/or starting directory to be used in producing the reports and displays.

**search paths**

Subset of a network volume which begins at a specific directory level. Contact your network administrator for help on identifying search path volumes.



**sniff out**

Basis for the program's title.

Hope you enjoy using the application.

Al Meadows

Programmer and Systems Analyst

Fineware Systems

**unregistered version**

This product has been released as shareware in order that you may evaluate the program free of charge. Your licence begins on the day the program is initially run and concludes after 30 days. If you decide not to register, you must cease using the program after the 30 days has elapsed.



