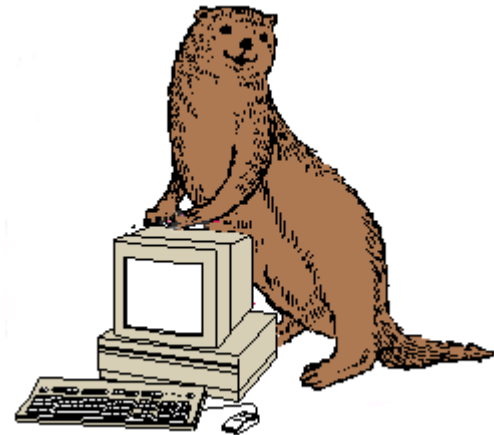


Contents

File Ferret



[Introduction](#)

[Program Operations](#)

[Product Support](#)

[Other Miscellaneous Stuff](#)

[Registration and Ordering Information](#) **Note:** [If you are already Registered](#)

Features:

- File List may be started at any level or may be processed on multiple disk volumes.
- Use selection filters to report based on multiple file mask patterns. (i.e. *.VBX & *.DLL)
- Use date and size ranges to focus the search.
- Search for text found within the file.
- An extremely powerful extract capability for extending the product's functionality.
- Up to nine windows of each type of the displays can be loaded at one time.
- Hard copy reports of complete or just partial information if desired.
- Screen and hard copy listings sorted in a number of ways.
- File type identification on supported formats displayed on the status bar.
- Version and file identification information is extracted and displayed on the status bar when a file is clicked on.
- Icon extraction for each file linked to File Manager associations. Either the icon for the application itself or the icon for the application associated with the file is displayed at the bottom of each display window.
- Files may be deleted from the hard disk from any display

[Disclaimer & Agreement](#)

[Copyright Notice](#)

[Product Support](#)

[System Requirements](#)

[What is Shareware](#)

[Windows User Group Network](#)


[Trademarks](#)

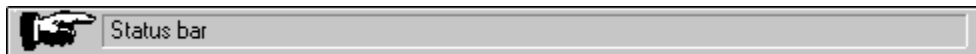
Program Operation

File Ferret is quite easy to use. Most operations are begun by either selecting items from the pull down menu bar or using a mouse or other pointing device to select operations from the buttons on the tool bar.

You will notice that the images on the tool bar buttons change as you enter and leave various parts of the program. Only buttons for operations which are currently available are visible. See [Buttons](#)



At the bottom of the screen is an image of a pointing finger.  This points to an area where status messages and other helpful information will appear. When you move the mouse over various screen elements, the status bar will tell you what the element is. Occasionally, [processes](#) will display their completion status as well.



Upon starting the program, an initial selection screen is displayed.

Getting Started

See [Creating a Files List](#) to learn how to create a list of files.

[Files List:](#)

Other Functions:

[Ancillary Functions:](#)

[Netware Extensions](#)

Other Miscellaneous

[Known problems and workarounds](#)

Also See [Keyboard](#) Operations

Features of Registered Version



File Ferret

See [Ordering Information](#)

- Elimination of all "nag" screens and activation of all features.
- A file viewer with support for over 20 file formats including ASCII, HEX, PCX, TIF, GIF, BMP, WMF, ICON, Microsoft Word, WordPerfect, AMI PRO, xBase, Paradox, Lotus, Excel, ZIP, LZH, Quattro Pro, MetaFiles, Q&A, Windows Write, and Microsoft Works. (New viewers are added from time to time and support for newer file formats updated as soon as possible.)
- Additional updates, corrections and bug fixes implemented after the release of the shareware version.

Order Form

Ver 1.01

Note: Select "File-Print Topic" from the menu bar to **print** this form.

You can order **File Ferret** by mail with payment by check , money order or Visa/MasterCard.

File Ferret

Name: _____
Company: _____
Street: _____
Street: _____
City: _____
State: _____ ZIP: _____
Country: _____
Telephone Number: _____

Credit Card Type: **Visa** **MasterCard** **Amex**
Credit Card Number: _____
Expiration Date: _____

Signature: _____

(Unless otherwise requested we ship a 3.5" HD disk)

| | | |
|--|-------|-------|
| File Ferret | 27.95 | _____ |
| File Ferret (Netware Edition) | 47.95 | _____ |
| Oklahoma residents add 8.375% sales tax | | _____ |
| Shipping/Handling - US or Canada | 2.00 | _____ |
| Shipping/Handling - Outside of US/Canada | 4.00 | _____ |

Total in US Funds drawn on a US Bank _____

Make checks payable to: **Fineware Systems**

Mail to:
Fineware Systems
P.O. Box 75776
Oklahoma City, Ok. 73147

By the way, where did you initially hear about **File Ferret**?
_____ (If CompuServe, which forum)

Ancillary Functions

Launching Files and Documents

Viewing Files (**Registered Version** feature)

Exporting

Deleting Files

Miscellaneous Options

Setting Colors

Closing Active Windows

Default Disk Drives

Display Fonts

Printing

Printer Fonts

Printer Setup

Trademarks

The following trademarks are used throughout this help file. Whenever you come across them, please remember that they are the trademarks or registered trademarks of the companies shown below.

Microsoft is a registered trademark and Windows and Visual Basic are trademarks of Microsoft Corporation.

All other names are trademarks or registered trademarks of their respective owners.

Any product names or file names used in this help file are for illustrative purposes only. Use of these product names does not imply endorsement of the product by Fineware Systems, or endorsement of Fineware Systems by the product vendor.

Status Bar Element: Comment Section

Program status and information is displayed here.

Miscellaneous Buttons

Tool bar buttons launch various functions within the program. Only buttons for functions currently available to you are visible. During longer processes, the buttons are disabled to allow the original process to complete without interruption.

Pointing Finger

Program author's favorite method of pointing out important information. Used in virtually all of his applications

Cancel

Closes the display without further processing.

Hint: You may also use the **ESC** key for the same function.

File List Display

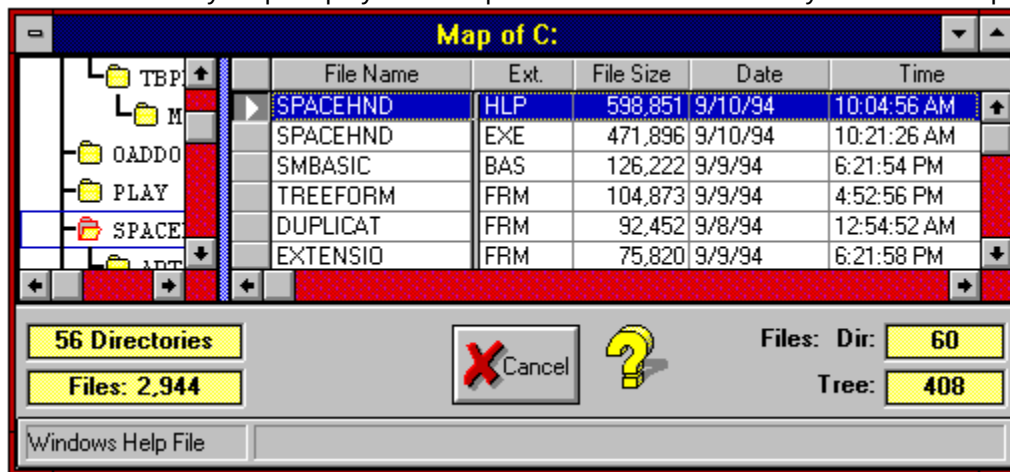
Point to the areas on the screen with the mouse to see a description of each area.

You may also sort the results of the search as desired. Sorting is performed by selecting the column desired and pressing one of the sort operation buttons on the tool bar.

If you sort the list by file size, descending, then the report will be printed with the largest file at the top.

Hint: Use the slider control which separates the left and right halves of the display to size the window panes relative to each other. To use the slider, place the mouse over the slider until you see the mouse pointer change to an arrow which points both left and right at the same time. Hold down the left mouse button and the slider control turns red. You may then shift the control left or right as desired. Release the left mouse button to set the window panes to their current width.

Also see Directory Map Display for an expanded look at the Directory side of the display.



Credits

Programming and System Design:

Al Meadows

Fineware Systems

Development Language

Visual Basic Pro v. 3.0 for Windows

Visual Basic is a product of Microsoft Corporation

Microsoft, MS, and MS-DOS are registered trademarks, and Windows and the Windows logo are trademarks of Microsoft Corporation.

Add-on Products and libraries

Microhelp, Inc.

Sheridan Software Systems

Desaware

Help File

VB helpWriter: Fred Bunn/Teletech Systems

Starting Directory: Drive Icons

You may select the disk volume by clicking once on these images.

Starting Directory: Directory Tree

You may select the starting point within the directory structure by clicking once on a directory. Double clicking will expand the directory tree to show sub directories nested below if any. [Hint:](#) Use the plus key (shift =) to expand the tree using the keyboard only.

Starting Directory: Selected Directory

This display tells you the currently selected starting directory. Press the OK Button to proceed or use the directory tree list to change to another directory location.

OK

Accepts the display and continues processing.

Hint: You may also use the ENTER key for the same function.

Introduction

See [How to use File Ferret](#) Help

File Ferret is a professionally designed and developed multipurpose Windows utility program. The overall mission of the program is to "ferret out" lost files on your hard disk. This is accomplished by allowing you to search a single disk drive or all of your disk drives in a single pass. You are not restricted to a single starting point on a disk drive either. Any number of starting points on a given disk drive can be set and searched.

You can search for multiple files at the same time using various file mask composed of standard search characters such as the question mark (?) and the asterisk (*). You can search using dozens of these mask in a single pass.

You may restrict your search to include a set of possible matches by using the date range or size range options. File attributes such as hidden & system can be also be used to restrict the search.

One last feature tops them all which is the ability to search for actual text strings within the files.

There is also a Novell Netware specific version of the program that includes the ability to search on and view Novell specific fields such as file "ownership" and "last accessed by".

File Ferret for Novell Networks only features will always be clearly identified throughout this help file.

HotSpot Icon

Example of a HOT spot. In this example, the icon images are purely ornamental.

HotSpot Label

Example of a HOT spot. In this example, there is text within a label which identifies the name of the current program.



Print Files List Report

Select this to produce a printed report of the files contained within the highlighted directory from the currently selected Directory Map.

Note: The report will be printed using the same information which is displayed on the screen. If a files are sorted on date, they will be sorted on the report as well.

Definition of Shareware

Shareware distribution gives users a chance to try software before buying it. If you try a Shareware program and continue using it, you are expected to register. Individual programs differ on details -- some request registration while others require it, some specify a maximum trial period. With registration, you get anything from the simple right to continue using the software to an updated program with printed manual.

Copyright laws apply to both Shareware and commercial software, and the copyright holder retains all rights, with a few specific exceptions as stated below. Shareware authors are accomplished programmers, just like commercial authors, and the programs are of comparable quality. (In both cases, there are good programs and bad ones!) The main difference is in the method of distribution. The author specifically grants the right to copy and distribute the software, either to all and sundry or to a specific group. For example, some authors require written permission before a commercial disk vendor may copy their Shareware.

Shareware is a distribution method, not a type of software. You should find software that suits your needs and pocketbook, whether it's commercial or Shareware. The Shareware system makes fitting your needs easier, because you can try before you buy. And because the overhead is low, prices are low also. Shareware has the ultimate money-back guarantee -- if you don't use the product, you don't pay for it.

Disclaimer & Agreement (for freely distributable shareware version only)

Note: See Registered version Disclaimer & Agreement

Users of **File Ferret** must accept this disclaimer of warranty:

"**File Ferret** is supplied as is. The author disclaims all warranties, expressed or implied, including, without limitation, the warranties of merchantability and of fitness for any purpose. The author assumes no liability for damages, direct or consequential, which may result from the use of **File Ferret**."

File Ferret is a "shareware program" and is provided at no charge to the user for evaluation. Feel free to share it with your friends, but please do not give it away altered or as part of another system. The essence of "user-supported" software is to provide personal computer users with quality software without high prices, and yet to provide incentive for programmers to continue to develop new products. If you find this program useful and find that you are using **File Ferret** and continue to use **File Ferret** after a reasonable trial period, you must make a registration payment of \$27.95 (plus applicable shipping/handling/sales taxes) to Fineware Systems. The \$27.95 registration fee will license one copy for use on any one computer at any one time. You must treat this software just like a book. An example is that this software may be used by any number of people and may be freely moved from one computer location to another, so long as there is no possibility of it being used at one location while it's being used at another. Just as a book cannot be read by two different persons at the same time. Commercial users of **File Ferret** must register and pay for their copies of **File Ferret** within 30 days of first use or their license is withdrawn. Site-License arrangements may be made by contacting Fineware Systems.

Anyone distributing **File Ferret** for any kind of remuneration must first contact Fineware Systems at the address below for authorization. This authorization will be automatically granted to distributors recognized by the (ASP) as adhering to its guidelines for shareware distributors, and such distributors may begin offering **File Ferret** immediately (However Fineware Systems must still be advised so that the distributor can be kept up-to-date with the latest version of **File Ferret**).

You are encouraged to pass a copy of **File Ferret** along to your friends for evaluation. Please encourage them to register their copy if they find that they can use it. Upon registration they will receive a copy of the latest version of **File Ferret**.

Fineware Systems
P.O. Box 75776
Oklahoma City, Ok 73147

Technical support via CompuServe
CompuServe ID: 70650,2022 (Al Meadows)
Prodigy ID: BBTK05A (Al Meadows)
America On line ID: VB AL
Microsoft Network: FINEWARE
Internet: <http://www.fineware.com>

Ordering Information

Registration for **File Ferret** is \$27.95 plus shipping & Handling (\$47.95 for [Netware Edition](#)).
Shipping and handling is **\$2.00 in North America, \$4.00 elsewhere!** You can purchase by check, money order, or credit card.

See [Site License Ordering](#) for multi-unit sales.

You may order with **Visa, MasterCard, or American Express** by including the card number, expiration date, name as it appears on your card, and the billing address.



Via **FAX Direct** from Fineware.

Orders Only: (800) 544-1740 or (405) 947-1740
FAX Number: (405) 942-7819

Via **e-mail Direct** from Fineware.

Al Meadows - Fineware Systems

CompuServe.....70650,2022
Prodigy.....BBTK05A
America Online.....VB AL
Microsoft Network..FINEWARE
Internet.....70650.2022@CompuServe.Com
World Wide Web.....<http://www.fineware.com>

Order Form **Direct** from Fineware using **US Mail**

Available: Visa, MasterCard, Amex, Check or Money Order



Ordering Online **via CompuServe SWReg Service**

Available: Conveniently billed to your CompuServe Account



PsL Ordering Information **Credit Card Orders ONLY**

Available: 800 Number, Fax, MasterCard, Visa, Amex, or Discover

See About PsL



Oakley Data Services **United Kingdom**



CopyCats **Netherlands, Germany, and Belgium**



P. & A. Shareware **Japan**

PsL Ordering Information

CREDIT CARD ORDERS ONLY

You can order with **MasterCard, Visa, Amex, or Discover** from Public (software) Library by calling **800-2424-PsL** or **713-524-6394** or by **FAX** to **713-524-6398** or by **CIS E-mail** to **71355,470**. You can also mail credit card orders to PsL at P.O.Box 35705, Houston, TX 77235-5705.

THE ABOVE NUMBERS ARE FOR ORDERS ONLY. NOT TECHNICAL SUPPORT.



PsL Order Form (Credit Card Orders ONLY)

Any questions about the status of the shipment of the order, refunds, registration options, product details, technical support, volume discounts, dealer pricing, site licenses, etc., must be directed to Fineware Systems .

To insure that you get the latest version, PsL will notify us the day of your order and we will ship the product directly to you."

About PsL

PsL is short for "Public (software) Library". PsL has been distributing public domain and shareware software on disks since 1982. PsL has been recommended in every major (PC) computer magazine, many computer books, and many non-computer publications such as NY Times.

PsL offers a shareware registration order taking service primarily for the benefit of shareware authors and their customers. The service began in January 1989 and presently takes orders for many hundreds of shareware authors.

PsL can take orders via our 800#, non-800#, CIS#, and FAX#. Their operators are available from 7:00 a.m. to 7:00 p.m. CST Monday-Friday and normally from 7:00 a.m. to 4:00 p.m. on weekends. They provide the easiest and most direct way to register shareware via CompuServe - via e-mail. FAX and credit cards are the primary means of registration for overseas customers.

Please note that support and usability problems [are not to be reported to PsL](#). They do not have support technicians who are trained about the usage and capabilities of **Space Hound** and simply refer such calls to me anyway "after" charging me a service charge.

PsL Order Form

ver 1.01

Note: Select "File-Print Topic" from the menu bar to print this form.

You can order **File Ferret** by Phone, Mail or FAX with payment by credit card.

PsL Product# 14272

Name: _____
Company: _____
Street: _____
Street: _____
City: _____
State: _____ ZIP: _____
Country: _____
Telephone Number: _____
Credit Card Type: _____
Credit Card Number: _____
Expiration Date: _____

Signature: _____

(Unless otherwise requested we ship a 3.5" HD disk)

| | | |
|--|-------|-------|
| File Ferret | 27.95 | _____ |
| File Ferret [Netware Edition] | 47.95 | _____ |
| Texas residents add 8.25% sales tax | | _____ |
| Shipping/Handling - US or Canada | 2.00 | _____ |
| Shipping/Handling - Outside of US/Canada | 2.00 | _____ |

Total in US Funds: _____

FAX or Mail

Public (software) Library
P.O. Box 35705
Houston, TX 77235-5705
Orders: 1-800-2424-PsL or 1-713-524-6394
FAX Orders: 1-713-524-6398

By the way, where did you obtain the shareware version
of **File Ferret**: _____

Product Support

IMPORTANT: See How to report problems Without sufficient background on the problem, we may not be able to fix it.

Primary Support for Fineware's Utility programs is provided within the Windows Utility Forum on CompuServe. The GO WORD for the forum is **WINUTIL** and the forum is monitored by Fineware on a **daily basis**.

The Windows Users Group Network (WUGNET) sponsors the WINUTIL Forum, and the Forum is open to all CompuServe users.

Technical support is available at no charge by sending electronic mail to:

Al Meadows (Fineware Systems)

- **70650,2022** on **CompuServe**
- **70650.2022@CompuServe.com** on **Internet**
- **http://www.fineware.com** on **Internet World Wide Web**
- **BBTK05A** on **Prodigy**
- **VB AL** on **America On line**
 - **FINEWARE** on **The Microsoft Network**

You may also use our **fax number (405) 942-7819** for reporting problems.

Technical support is also available by sending **US Mail** to Fineware Systems, P.O. Box 75776, Oklahoma City, Ok 73147.

Registered users have priority but I will try to answer all questions.

How to Report Problems

When reporting problems, please include the following information:

- 1) Is the problem reproducible? If so, how? Regardless, include a narrative description of the problem.
- 2) Did the problem occur when running Windows in Enhanced or Standard mode? You can determine which mode is active by choosing About in the Program Manager's Help pull-down menu.
- 3) If a dialog box with an error message was displayed, please include the full text of the dialog box, including the text in the title bar.
- 4) A text file called FERR_ERR.LOG may exist within the application's directory. The contents of this file should be included in the report. **Note: THIS IS THE SINGLE MOST IMPORTANT THING YOU CAN DO!**
- 5) A description of the hardware used including manufacturer and model. This should include descriptions of all internal components such as hard disk type and size. **Hint:** There should be a utility located either within your DOS or Windows directory called MSD. This is the Microsoft System Diagnostic program. It has an option of creating a report detailing the items on your system. There is also another utility called DrWatson which is located within your Windows directory. It is quite useful to the developer in determining system status when programs fail. To use DrWatson, simply launch it before launching **File Ferret** and it will create a DrWatson.Log file. Submitting both of these reports will help in isolating and fixing problems which you may encounter.
- 6) Include some method (preferably an e-mail address) where Fineware can contact you if we need additional information and to provide updated software when the problem has been resolved.

System Requirements

File Ferret requires Windows 3.1 or later or Windows for Work groups 3.11 or later. I have tried to provide keyboard support for most functions but a mouse or other pointing device is highly recommended.

A PC (386 processor or above) with at least 4 MB of RAM (8 MB recommended).

Operations on other operating system environments (such as OS/2) have not been tested. A version which takes advantage of the **WindowsNT** environment and **Windows 95** is in development and expected to be released in 1996.



Deleting Files

Deleting files is easy with File Ferret. While viewing the Files Display you can delete files using either the mouse or the delete key.



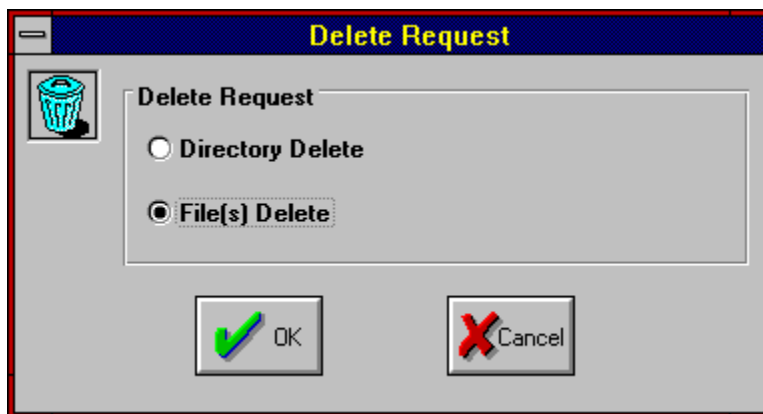
Tool bar Method: Press the Delete Button while the file(s) you wish to delete are highlighted.

Keyboard Method: Press the Delete Key while the file(s) you wish to delete are highlighted.

Highlight the file(s) you wish to delete using the mouse. You may select multiple files by holding down the Control Key (Ctrl) selected the desired files using the mouse and the left mouse button. You may select a range of files by selecting the first in the range, and then selecting the bottom of the range with the mouse and the left mouse button while holding down the shift key. You may also select multiple files in a range by holding down the left mouse button and dragging across the desired files.

Note: Unless the feature is disabled (see [Miscellaneous Options](#)), you will be queried about confirming the delete before it occurs.

Note: You may delete an entire directory structure while the Directory Map is the current active display. Please be cautious using this option.

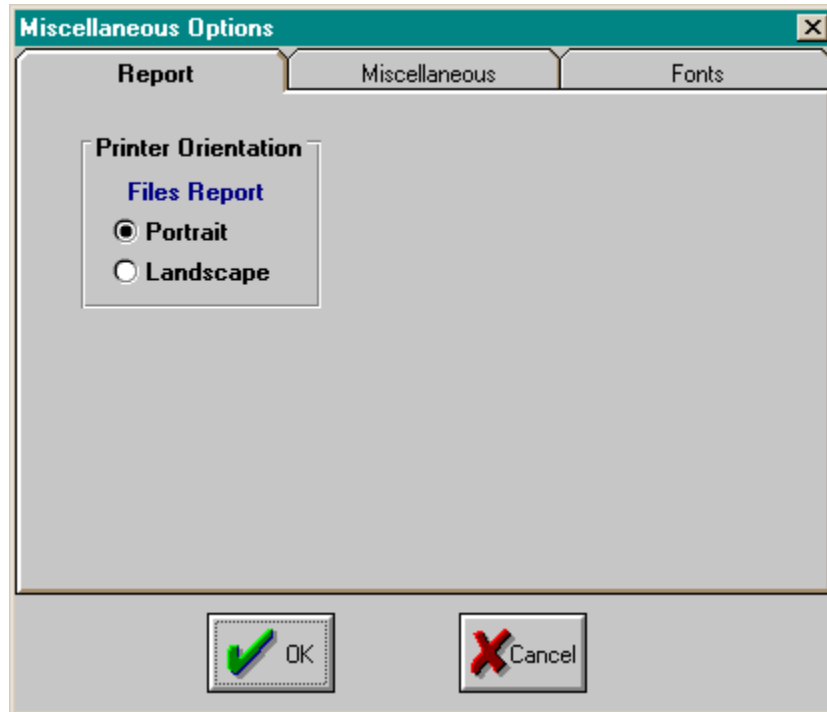


You may choose Directory or File deletes.



Miscellaneous Options

You may set your own personal preferences for program operations. These include the ability to set the colors used within the application, the orientation of printed reports, and other miscellaneous items. See [Setting Colors](#)





Closing Active Windows

Depress this to immediately close all open displays within the program.

Current Directory

This is the currently selected directory. If you save now, this is where the file will be placed.

Existing Files

This would show the names of existing files of the currently selected type. In this example, we would see files with the extension .MAP if any existed. To see files within the currently selected save directory with the extension of .DUP (Duplicate Names Save File), then use the "Save File as Type" combo box and select Extension Reports.

Hint: Double Clicking on an existing file name will place the file name within "File Name" text box and allow you to save the current report on top of a previous one. **Note:** The previous report would be destroyed.

Save as File Type

The file type will be selected automatically for you depending upon which type of Display report you are attempting to save. You may manually change it to one of the other types if desired but this is not recommended.

Files within Highlighted Directory

These are the files which are stored in the currently highlighted directory.

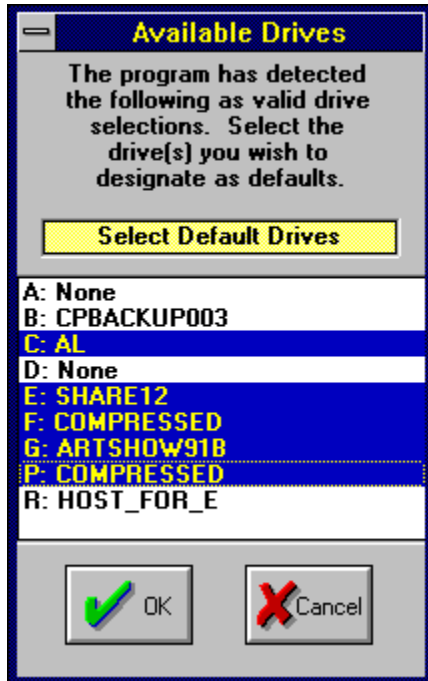
File Size

Size of the file in bytes.

File Date & Time

Date and Time the file was last modified or originally created.

Default Disk Drives



You may include or exclude specific disk volumes from being searched for a Duplicate Files Display. This can be very handy in network environments where Disk Mapping is used to create search paths and user volumes. It is also likely that you would wish to exclude diskette drives and RAM Drives.

Drives Found on Your Computer

This is a list of all disk devices which can be found by the program. It is not necessary to have a drive loaded (such as a floppy drive or CD-ROM drive) to detect the device. For performance reasons, you should exclude diskette drives and CD-ROM drives unless you specifically wish to include them in searches.

You should also be careful when selecting network volumes. Search times against large network volumes can be quite time consuming. You should also exclude volumes which are only search paths on the network and not really separate disk volumes.

Ram drives should also be excluded.

Sectors

A hard disk is divided up into a series of concentric rings known as tracks. Each ring is broken up into manageable chunks called sectors, separated by small gaps. A sector begins with a unique pattern that enables the disk controller determine where something starts.



Delete Files

Select this option to delete the highlighted file(s) within the currently highlighted directory.

Files Deleted

Count of files deleted by the program.

Reset Count

This allows you to reset the count of files and bytes deleted back to zero.

Orientation: Files List

Set printer orientation for Files List Report.

Delete Confirmations

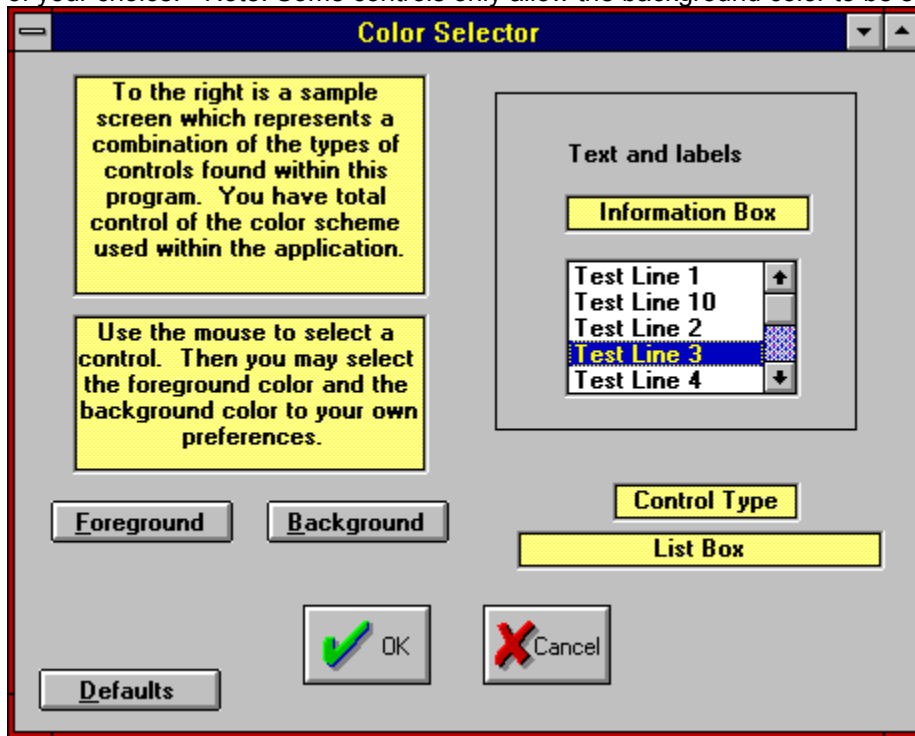
You may disable delete confirmations if desired. Check [here](#) to disable confirmations. The default during installation is to show confirmations.

Change Colors

Press this button to set custom colors based on user preferences.

Setting Colors

You can set application colors by first selecting the desired interface element in the box containing the sample controls. Once a control has been selected, you may select background and foreground colors of your choice. Note: Some controls only allow the background color to be set.



Text and Labels

To set the text and label colors, click [here](#), then select foreground. Select the color desired from the colors chart and select OK. **Note:** Background cannot be set for this screen element.

Information Box

To set the Information Box colors, [click here](#) and then select foreground. A color chart will be displayed which allows you to select the color desired. Select Background to set the background color.

Listbox colors

To set the Listbox colors, [click here](#) and then select foreground. A color chart will be displayed which allows you to select the color desired. Select Background to set the background color. Note: This also sets the colors for the Directory Map display.

Screen Element

This displays the currently selected screen element. Use the Mouse to click within the box above to select the screen element you wish to change.

Foreground Button

This allows you to select the foreground color of the currently selected screen element.

Background Button

This allows you to select the background color of the currently selected screen element.

Default Colors

This allows you to set the foreground and background color of all screen elements back to system defaults.

Color Selection Instructions

Use the instructions displayed here to set the colors to your own preference.

Sort: Select Field


Select the field that you wish to sort on and press the OK button. Note: If a selection is not available for the currently selected display, it will be disabled.

Sort: Select Order

Select the order desired.

Print

You must have one of the primary displays loaded in order to print.

Tool bar Method: Press the Save File Button 

Menu bar Method: Select File|Print...

Before printing begins, you will see a dialog box which lists the available reports. Select the report you wish to see.

See Printing the Directory Map Reports

See Printing the Extensions Display

See Printing a Duplicate File Names Display

Display and Directory Map Fonts

Menu bar Method: Select File|Display Font...

Menu bar Method: Select File|Directory Map Font...

You may assign any **screen font** you have to the listbox displays. If you don't select one, MS SANS SERIF will be used.

You may assign any **fixed width font** you have to the Directory Map display. If you don't select one, the current Windows default will be used.

Printer Font

Menu bar Method: Select File|Printer Font...

You may assign any font you have to the reports. If you don't select one, the current Windows default will be used. Note: Column positioning is fixed and use of certain oversized font sizes can cause overlapping.

Printer Setup

You may select from any of your available printers. Note: Printer orientation is controlled by settings within the program (see Miscellaneous Options) and not by the Printer setup Dialog Box.

Buttons



Create a Files List Display



Set Miscellaneous Options



Sort selected column in ascending order



Sort selected column in descending order



Delete



Close all windows belonging to **File Ferret**



Print the current display



Terminates **File Ferret**

Windows User Group Network

Fineware Systems has chosen The Windows Utility forum (GO [WINUTIL](#)) on CompuServe as the home base for our product. We will visit the the forum every day and will be available for any questions you might have about **File Ferret**. In addition, this is the forum where the absolute latest version of **File Ferret** can be obtained.

THE WINDOWS USER GROUP NETWORK

The Windows User Group Network is the premier international organization for Windows professionals. WUGNET's role is to communicate windows-based technologies and applications to an international audience through the WUGNET forum on CompuServe, conferences, trade shows, publications, trade books, and various membership interactions. WUGNET offers its members a number of technical support tools and support resources designed to save them time and solve quickly problems.

THE WINDOWS USER FORUM ON FORUM ON COMPUSEVE

Windows professionals, from corporate professionals to consultants, communicate in the fastest growing independent technical user forum on CompuServe - The Windows Users Forum (GO [WUGNET](#) or GO [WINUSER](#)). Members of the organization are also provided with access to a private library containing advance reports on trade shows, technical notes, and product appnotes and reviews. [WUGNET](#) maintains an active private beta testing program where members can sign up on line and test new versions of innovative products. [WUGNET](#) works with shareware authors in helping to promote high quality and innovative shareware. THE [WUGNET](#) shareware of the week program, makes available to and informs forum members about the hottest applications to be found on CompuServe. [WUGNET](#) has a long history of working very closely with shareware authors and considers them an integral part of the [WUGNET](#) community.

ORIGINS OF THE WINDOWS USERS GROUP NETWORK

Founded in 1988, as an independent organization, [WUGNET](#) has positioned itself as an industry wide technical resource, rather than as an organization committed to any single vendor or groups of vendors. For five years, the Windows User Group Network has dedicated their efforts to communicating trends and developments, and solutions about the Windows environment on an international level. As a result of the technological changes experienced in the last few years, [WUGNET](#) has evolved into an organization which aggressively promotes the interfacing of existing technologies with new state of the art technologies to create intelligent solutions to today's business problems.

Ordering On-line

You may order using CompuServe's Software Registration Service: enter **GO SWREG** at the **!** prompt and follow the menus.

File Ferret's registration id is **8132**. The indicated price will be **\$27.95** plus shipping and handling.

File Ferret [Netware Edition] registration id is **8157**. The indicated price will be **\$47.95** plus shipping and handling.

[Touch Me!](#)

Note: Ordering On line via CompuServe is an exceptionally easy way for those users who live outside the United States to pay for Shareware.

Copyright Notice

Copyright © 1995 - 1996 Fineware Systems and AI Meadows. All rights reserved.

Registered Version Disclaimer and License Agreement

Users of the registered version of **File Ferret** must accept this disclaimer of warranty:

Fineware Systems , Inc. **License Agreement**

This is a legal agreement between you the end user, and Fineware Systems. (FINEWARE). By installing the inclosed software, you are agreeing to be bound by the terms of this agreement. If you do not agree to the terms of this agreement, promptly return all diskettes and insure that all installed copies of the software have been deleted for a full refund.

1. GRANT OF LICENSE. FINEWARE grants you the right to use one copy of the enclosed FINEWARE software program (the SOFTWARE) on a single terminal connected to a single (i.e. with a single CPU). You may not network the SOFTWARE or otherwise use it on more than one computer or computer terminal at a time.

2. COPYRIGHT. The SOFTWARE is owned by FINEWARE and is protected by United States Copyright laws and international treaty provisions. Therefore, you must treat the software like any other copyrighted material (e.g., a book or musical recording) except that you may either (a) make one copy of the SOFTWARE solely for backup or archival purposes, or (b) transfer the SOFTWARE to a single hard disk provided you keep the original solely for backup and archival purposes. You may not copy the written materials accompanying the SOFTWARE.

3. OTHER RESTRICTIONS. You may not rent or lease the SOFTWARE, but you may transfer the SOFTWARE and accompanying written materials on a permanent basis provided you retain no copies and the recipient agrees to the terms of this agreement. You may not reverse engineer, decompile or disassemble the SOFTWARE. If SOFTWARE is an update, any transfer must include the update and all prior versions.

LIMITED WARRANTY

LIMITED WARRANTY. FINEWARE warrants that the original disk are free from defects for 90 days from the date of delivery of the SOFTWARE.

CUSTOMER REMEDIES. FINEWARES entire liability and your exclusive remedy shall be, at FINEWARES option, either (a) return of the price paid or (b) replacement of the SOFTWARE which does not meet FINEWARES Limited Warranty and which is returned to FINEWARE with a copy of your receipt. Any replacement SOFTWARE will be warranted for the remainder of the original warranty period or 30 days, whichever is longer. THESE REMEDIES ARE NOT AVAILABLE OUTSIDE OF THE UNITED STATES OF AMERICA.

NO OTHER WARRANTIES. FINEWARE disclaims all other warranties, either express or implied, including but not limited to implied warranties of merchantability and fitness for a particular purpose, with respect to the SOFTWARE and the accompanying written materials. This limited warranty gives you specific legal rights. You may have others which vary from state to state.

NO LIABILITY FOR CONSEQUENTIAL DAMAGES. In no event shall FINEWARE or its suppliers be liable for any damages whatsoever (including, without limitation, damages for loss of business profits, business interruption, loss of business information, or other pecuniary loss) arising out of the use of or inability to use the SOFTWARE, even if FINEWARE has been advised of the possibility of such damages. Because some states do not allow the exclusion or limitation of liability, for consequential or incidental damages, the above limitation may not apply to you.

This agreement is governed by the laws of the State of Oklahoma.

Launching Files and Documents

You may launch programs as well as documents which have been associated with programs from any list which contains files.

You should refer to the Windows File Manager's HELP file for documentation on file associations.

How To launch a file or document.

Method 1:

- Highlight the file desired
- Press the Right Mouse Button while the mouse pointer is within the file list borders

Method 2:

- Double Click the application's icon when it appears to the right of the CANCEL Button.



Viewing Files

(Registered version of **File Ferret** ONLY Feature)

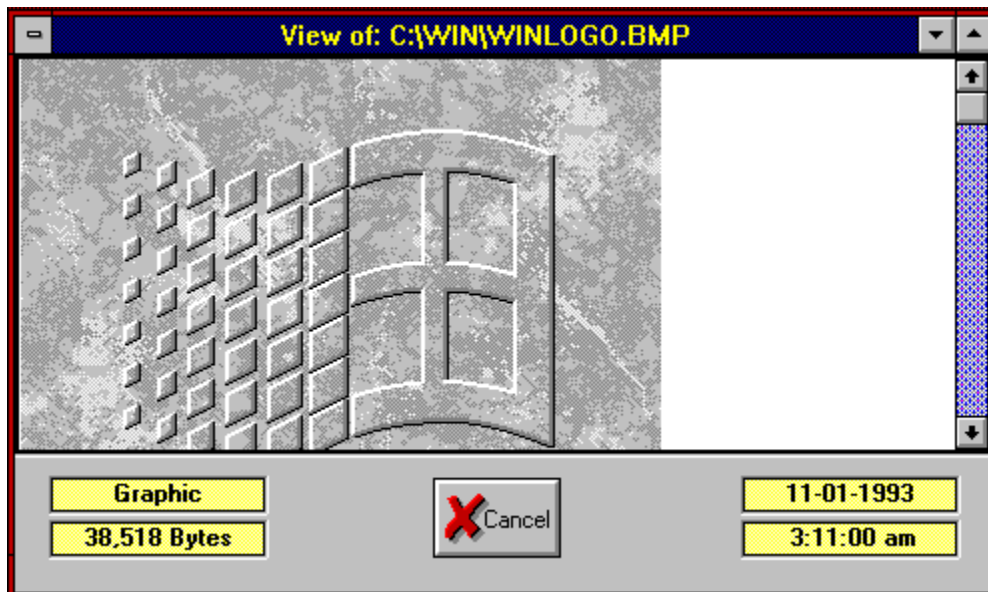
You may view any file on your computer with **File Ferrets's** versatile file viewer.

How to view files:

- Highlight the file(s) you wish to view within any of the displays which feature file list. You may highlight multiple files.
- Press the File Viewer button (Pictured above).

Note: You may launch a single file viewer by simply double clicking on the file entry within the list box.

This is a sample Viewer screen. The document being viewed is one of the bitmapped image files which ships with Windows. **File Ferret's** includes the ability to mark a rectangular section of a graphic in order to copy it to the Windows Clipboard. Text formats can also be copied.





Viewer Content Window

This area displays the contents of the selected file. The format used will depend upon the type of file displayed. If the file is not one of the types recognized by the program, the file will be displayed in Hexadecimal format. Executable programs and dynamic link libraries are always displayed in Hex.

Viewer Type

This describes the type of file viewer in use.

Viewed File Size

Number of bytes within the file being viewed.

Viewed File Date and Time

DOS file date and time of the viewed file.

Internal File Version Number

This is the version number stored within the file. It is usefull for determining which instance of a file is the latest without having to rely on the DOS date & time stamp.

Keyboard

| | |
|-------------------|--|
| Tab | Moves to the next command button, list box, text box, check box, or group of option buttons. |
| Shift+Tab | Moves to previous list box, text box, check box, command button, or group of option buttons. |
| Arrow keys | Move down file list or within group of option/command buttons. |
| Space bar | Chooses active command button or turns active check box on or off. |
| F1 | Displays context sensitive help. |
| F10 | Activates menu bar. |
| Alt+F4 | Closes File Ferret |
| Ctrl+F | Displays initial dialog for creating a Files List Display. |
| Ctrl+P | Displays dialog for printing the current active display. |
| Ctrl+O | Displays the Miscellaneous Options Dialog. |
| Shift+F4 | Cascade open windows. |
| Shift+F5 | Tile open Windows. |
| Delete | Delete highlighted files. |
| Enter | Chooses active command button. |
| Esc | Cancels command and closes dialog box. |

Search List

List of file names or file name masks which are to be used in the search.

Add to List

Press this button to add the contents of the text input box to the search list. **Hint:** If the text box contains information, pressing the ENTER Key will perform the same function.

Text Input Box

Place the file name of mask desired here and press the Add To List button with the mouse.

Oakley Data Services Ordering Info

ver 1.01

Note: Select "[File-Print Topic](#)" from the menu bar to print this form.

You can order **File Ferret** by Phone, Mail, E-mail or Fax with payment by credit card.

Oakley Data Services,
3 Oakley Close,
Sandbach,
Cheshire CW11 9RQ,
England.

Call +44 (0)270 759739
Fax +44 (0)270 765272
CIS: 74774,1347

File Ferret

Name: _____

Company: _____

Address: _____

: _____

: _____

: _____

: _____

Telephone Number: _____

Credit Card Type: _____

Credit Card Number: _____

Expiration Date: _____

Signature: _____

(unless otherwise requested we ship a 3.5" HD disk)

| | | |
|--------------------|-------|-------|
| File Ferret | 18.00 | _____ |
|--------------------|-------|-------|

| | | |
|-------------------|------|-------|
| Shipping/Handling | 2.00 | _____ |
|-------------------|------|-------|

| | | |
|---------------------------------|------|-------|
| UK and EEC add 17.5% VAT | 3.50 | _____ |
|---------------------------------|------|-------|

| | |
|----------------------------------|-------|
| Total in Pounds Sterling: | _____ |
|----------------------------------|-------|

By the way, where did you initially hear about

File Ferret: _____

Site License

(ver 1.01)

Site licenses must be obtained directly through Fineware Systems .

You can order a site license for **File Ferret** by mail with payment by check or money order.

A Site License entitles you to make copies of an original diskette up to the limits of your site license and distribute them within your organization. You may not distribute copies outside of your company.

File Ferret or **File Ferret [Netware Edition]** (Circle One)

Name: _____
Company: _____
Street: _____
Street: _____
City: _____
State: _____ ZIP: _____
Country: _____
Telephone Number: _____

Credit Card Type: Visa MasterCard AMEX

Credit Card Number: _____

Expiration Date: _____

Signature: _____

Unless otherwise requested we ship a 3.5" HD disk)

| <u>Rate Schedule</u> | <u>File Ferret</u> |
|----------------------|--|
| 2 to 10 copies | \$27.95 + Quantity over 1 at \$18.00 each |
| 10 to 20 copies | \$189.95 + Quantity over 10 at \$14.00 each |
| 20 to 100 copies | \$329.95 + Quantity over 20 at \$ 9.00 each |
| 100 or more | \$1,049.95 + Quantity over 100 at \$ 6.00 each |

| <u>Rate Schedule</u> | <u>File Ferret (Netware Edition)</u> |
|----------------------|--|
| 2 to 10 copies | \$47.95 + Quantity over 1 at \$28.00 each |
| 10 to 20 copies | \$299.95 + Quantity over 10 at \$20.00 each |
| 20 to 100 copies | \$499.95 + Quantity over 20 at \$11.00 each |
| 100 or more | \$1,379.95 + Quantity over 100 at \$ 7.00 each |

Note: If you wish Fineware to provide individual installation diskettes, please add \$1.50 per unit ordered.

File Ferret or **File Ferret [Netware]** Qty _____ Extended _____
Oklahoma residents add 8.375% sales tax _____
Shipping/Handling - US or Canada \$ 2.00 _____
Shipping/Handling - Outside of US/Canada \$ 4.00 _____

Total in **US Funds** drawn on a **US Bank** _____

Make checks payable to: **Fineware Systems**

Mail to:

Fineware Systems

P.O. Box 75776

Oklahoma City, Ok. 73147

By the way, where did you initially hear about **File Ferret**: _____

Howto use File Ferret Help

This help file has been designed using screen images taken from the program. Its goal is to be the primary method for providing assistance and understanding about the operations and features of **File Ferret**. Use the mouse to move over the sample image below. You will see that the mouse cursor changes into a pointing finger. When you see this occur over an image, you may click on the image to display additional information. Note that some images have multiple areas which can be examined. In the example below, three areas are HOT and will display information when activated by clicking on them with the mouse.



Starting Directory Files

The files for the current highlighted directory are provided as an aide for determining the correct starting point. You may not view, move, launch, copy, or any other function with them.

Starting Directory Slider Control

Used to change the size of the split between the directory side and the files within the highlighted directory.

Position the mouse over the control, hold down the left mouse button and the slider will turn red. Move the mouse to the right or left until the window displays the information the way you want it.

Thanks for looking at File Ferret

I wish to thank you for evaluating my product. It is only through continued registrations that professional shareware authors can continue to produce software of this quality.

Al Meadows
Program Author
Fineware Systems

Upgrading to Latest Version

File Ferret will be continually upgraded to add features and correct programming errors as they are detected. In addition, changes to the underlying operating systems may make some features of the program redundant while creating new capabilities that can be enhanced by the program.

The policy of Fineware Systems on upgrades to registered users is as follows:

If you are already a registered user of **File Ferret**, you may be able to update your existing registered version to the latest edition by simply downloading the most recent version while retaining the program's registered features. This can be done as long as the new version is release **1.99 or less**. As program errors and bugs are detected and resolved, Fineware will make available additional releases on the main commercial services such as CompuServe, America Online, Prodigy, and the Microsoft Network. In addition, you can always obtain the most recent version of all of Fineware's products by connecting to our Internet World Wide Web site. The address is [<http://www.fineware.com>]. **Note:** Viewer Upgrades: See Peeper

Note: See Caution

To update an existing installation, simply replace all existing files with any which are included within the zipped file.

If you prefer, Fineware will be happy to send the latest version that you are entitled to on diskette. There is a \$5.00 Shipping/Handling charge for this service. You will receive a complete set of install disks for the latest release.

Site license holders should contact Fineware Systems for a price quote.

Associated Icon

Icon contained within the file itself or the icon of the application program which has been associated with the highlighted file.

Hint: Double_Clicking on this icon in **Space Hound Pro** will launch the application.

Sort Operation Buttons



Ascending Sequence



Descending Sequence

Sort by Column

You may sort the display in either ascending or descending sequence by selecting the desired column and pressing the sort operation buttons.

Size of Duplicate Files

Combined size of all duplicate files found with a specific name.



File List Display

Similar to the Windows 3.1 File Manager's File Search result in appearance, its goal is to provide a full system search and display without the limitations imposed by the Windows File Manager.

You may use this tool to process against multiple volumes.

Additional Topics

See [Creating a Files List Display](#)

See [Files List](#)

See [Printing the Files List](#)

Creating a Files List Display

Tool bar Method: Press the Files List Button



Menu bar Method: Select File|Ferret out files...

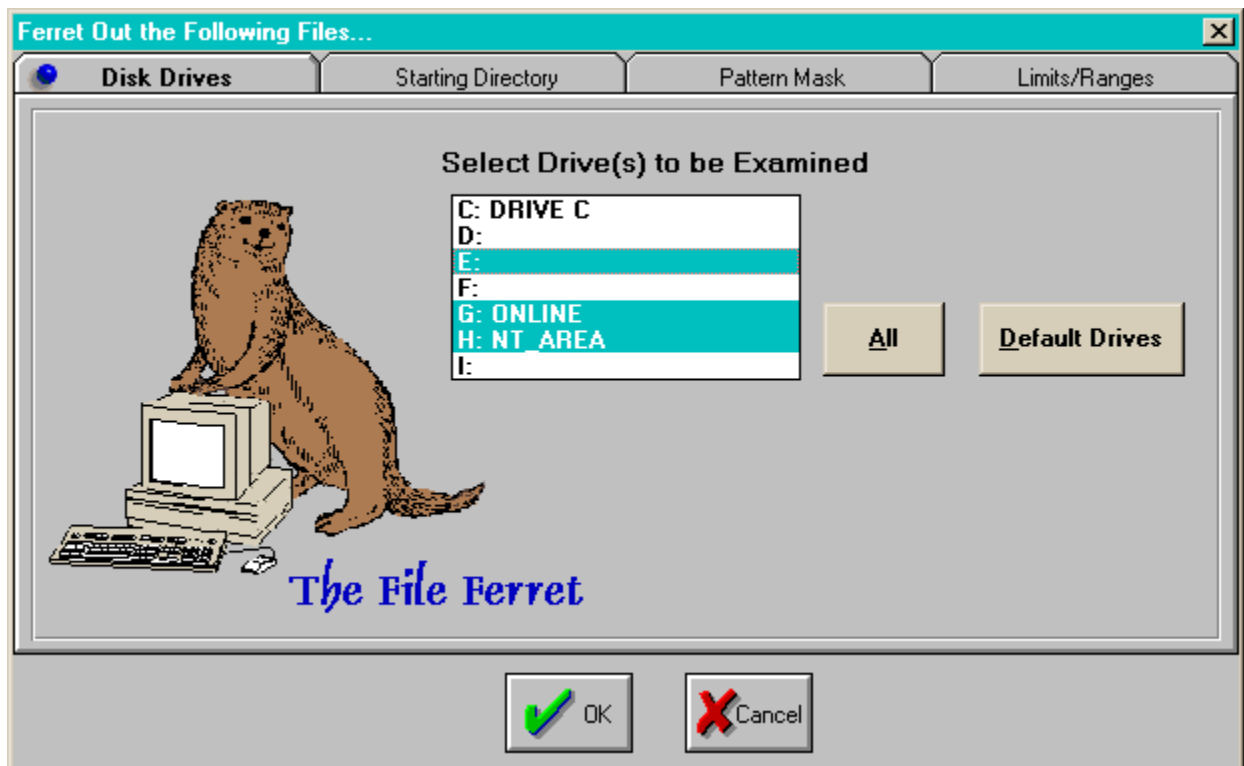
Select Disk Drives

See [Select Starting Directorys](#)

Select the disk drive(s) that you wish to search. These are your current default disk drives. You may pick one or more volumes from this list. To select multiple volumes, use the mouse to select each volume desired while holding down the Control Key (Ctrl). You may select a range of files by selecting the first in the series, pressing the Shift Key, then selecting the last in the series while the Shift key is down. Another method for selecting multiple volumes is to drag across them with the mouse while holding down the left mouse button.

Hint: If all of your disk volumes are not showing up in this list, you need to select [Default Disk Drives](#) from the pull-down menu (File|Default Disk Drives...).

To select multiple volumes, hold the Control Key (Ctrl) down while using the mouse to click on each desired volume. You may also use the Shift key to select a range. To select a range, highlight the first entry in the list, press the Shift key and use the mouse to select the last entry in the list desired. Another method for selecting items from the list when they are in consecutive order is to drag the mouse across the volume names while holding down the left mouse button.



Files List

Point to the areas on the screen with the mouse to see a description of each area.

You may also sort the results of the search as desired. Sorting is performed by selecting a column and pressing one of the sort operation buttons on the toolbar.

If you sort the list by file size, descending, then the report will be printed with the largest file at the top.

| File Name | Ext. | File Size | Date | Time | Path Name |
|-----------------|------------|------------------|----------------|--------------------|---------------------|
| GRAPH5 | EXE | 1,505,984 | 3/7/94 | 6:50:56 PM | C:\WIN\MSAPPS\MSGRV |
| ENCART94 | EXE | 1,342,976 | 11/3/93 | 12:00:00 PM | C:\ENCARTA\ |
| TOPICS94 | LST | 1,274,340 | 11/3/93 | 12:00:00 PM | C:\ENCARTA\ |
| PHON | DAT | 1,136,442 | 1/1/92 | 3:51:48 PM | C:\MV\PROSPEAK\ |
| CRPE | DLL | 1,122,000 | 8/23/94 | 12:00:00 PM | C:\WIN\SYSTEM\ |
| MSAJT200 | DLL | 1,063,680 | 8/23/94 | 12:00:00 PM | C:\WIN\SYSTEM\ |
| ORGCHART | EXE | 991,168 | 2/11/94 | 12:00:00 PM | C:\WIN\MSAPPS\ORGCH |
| MFC0250D | DLL | 967,056 | 11/23/93 | 4:01:00 PM | C:\WIN\SYSTEM\ |

Items: 2,954 Cancel Size: 165,291,513

Dynamic Link Library Encarta '94 main executable (File Ver:2.12.0.22 Product Ver:2.12.0.22)

Printing the Files List

Tool bar Method:

Press the Print Button



Menu bar Method:

Select File|Print...

Files List: File Names

Names of the files found by the search.

Files List: File Sizes

Size in bytes of each individual file.

Files List: Date and Time

Date and time created or last modified for each file within the list.

Files List: Path Name

Disk volume and directory that contains each file.

Files List: List Count

Total number of items within the list.

Files List: Combined Size

Total size of all files within the list.

File Type

Some file types are recognized by Space Hound. If the file type can be determined, it will be displayed in this status box area.

File Description

Some files contain embedded file descriptions and version information. If possible, Space Hound extracts this information and displays it on this status bar.

Printing the Activity Report

Tool bar Method:

Press the Print Button



Menu bar Method:

Select File|Print...

Caution

Most of the files required by **File Ferret** are to be found within the downloads which will be available on commercial on line systems and Bulletin Board Systems. A notable exception to this is the file viewer component of **File Ferret**. Fineware cannot guarantee that a future version of **File Ferret** will work with your existing viewers. If this situation arises, you will need to obtain a diskette containing the new viewer files from Fineware.

CopyCats Order Form

Netherlands, Germany, Belgium

(ver 1.01)

Note: Select "File-Print Topic" from the menu bar to print this form.

Users in Holland, Germany and Belgium who prefer to order locally and pay in their own currency, can order **File Ferret** through CopyCats in Holland. Please fill out this form and send it, along with payment, to:

CopyCats

CopyCats Software & Services

Postbus 1088

Phone / Fax: +31 (0) 2207 45993

1700 BB Heerhugowaard

(after 10/10/95: +31.72.5745993)

The Netherlands

Email 100121.1562@compuserve.com

File Ferret

Name: _____

Company: _____

Address: _____

Country: _____

Phone: _____ Fax: _____

BTW/Steuer # (German and Belgian businesses): _____

(unless otherwise requested we ship a 3.5" HD disk)

Pricing:

File Ferret: Dfl. 59,95 DM 55 1095 BEF

File Ferret [Netware Edition]: Dfl. 98,50 DM 95 1885 BEF

(prices include shipping and 17.5% BTW / MwSt / VAT)

Please send me:

| Qty. | Description: | Price: | Total: |
|------|--------------|--------|--------|
|------|--------------|--------|--------|

| | | | |
|-------|-------------|-------|-------|
| _____ | File Ferret | _____ | _____ |
|-------|-------------|-------|-------|

| | | | |
|-------|-------------------------------|-------|-------|
| _____ | File Ferret [Netware Edition] | _____ | _____ |
|-------|-------------------------------|-------|-------|

Order Total: _____

Signature: _____ Date: _____ - _____ -19____

Method of payment (tag one):

☐ Enclosed Eurocheque, bankcheque or betaalkaart/Zahlkarte

☐ NL: Overgemaakt aan Postbank 43.28.577

☐ D: Überwiesen an Postbank Saarbrücken Kto.-Nr. 556 33-666 BLZ 590 100 66

☐ B: Overgemaakt aan Postcheque 000-1656064-80

☐ Op rekening / Auf Rechnung (Business/Government only).

By the way, where did you initially hear about **File Ferret**: _____

And where did you obtain your copy of **File Ferret**: _____

Dank u voor uw bestelling! - Vielen Dank für Ihren Auftrag!

Exporting

You may export the contents of the Files List Display.

The export is in the form of comma delimited ascii and is suitable for importing into products such as Microsoft Excel or Microsoft Access.

Specific instructions for exporting to Microsoft Access [\(using MS Access ver 2.0\)](#)

- Create the exported file by launching **File Ferret's** [Files Display](#). When the display is on the screen, you may process the export.
- Press the Export Button (pictured below). You will be prompted to provide a file name and directory for the exported file. Type a file name (such as MyExport). The file name will default to a .TXT file extension (example: MyExport.TXT).



- Launch Microsoft Access and either open an existing database or create a new one.
- From the File Menu, choose Import.
- Select Text [Delimited]
- Use the file open dialog box to select the file created by **File Ferret** in the steps above (example MyExport.TXT).
- While the file is highlighted, press the IMPORT button.
- The Import Text Options dialog will appear. Select the check box "First Row Contains Field Names" and choose "Create New Table".
- Press the OK button and the import will be processed. Refer to your Microsoft Access documentation for additional information and help.

Netware Extensions

A special edition of **File Ferret** is available for use on Novell Networks. The additional features include the addition of six netware specific fields to all program displays and reports. This includes the ability to sort and select on these fields. The additional data fields are as follows:

- Ownership (based on Login Name)
- Updated By (based on Login Name)
- Modified Date
- Last Accessed Date
- Archived Date
- Date Created

Availability and pricing:

The Netware Extensions edition is available now. Existing registered users of **File Ferret** may upgrade to the netware edition at any time for \$25.

Known Problems

Common installation problems: Many of today's applications include components from other 3rd party distributors. These components are like snap-together parts. When an application is initially designed, the programmer is probably using the latest version of all of the components his application needs. Over time, these components may be enhanced to include new features and capabilities. A frequent problem occurs when a newer application makes use of features that were not available in earlier version of the software. This can cause problems when multiple versions of these components exist on your computer. Please refer to the following list of files and eliminate older version if possible.

- ◆ APIGUIDE.DLL
- ◆ MHRUN500.DLL
- ◆ CMDIALOG.VBX
- ◆ MHGCAL.VBX
- ◆ MHGCMD.VBX
- ◆ MHVIEW.VBX
- ◆ MUSCLE.VBX
- ◆ THREED.VBX
- ◆ SSDATA2.VBX
- ◆ MHTAB.VBX

Other Common Problems:

SYMPTOM: Attempts to run any of the reports or displays cancels the program all the way to the DOS prompt.

CURE: Your autoexec.bat file contains a line for the CD-ROM driver called MSCDEX. This line (or a preceeding line) may contain a parameter which is causing the problem. Check for /S on the MSCDEX line. If it is there, remove it. It's only function is to allow multiple PCs to share a CD-ROM drive over a Windows for Workgroups network. If the /S appears in the preceeding line, try re-arranging the order of the lines in autoexec.bat so that this line doesn't directly preceed the MSCDEX line.

SYMPTOM: A GPFault occurs when you launch the program. Normally, this will be the result of a conflict with some aspect of Space Hound and your video card. The module that reports the fault will have a file extension of .DRV and most likely, you will be using a driver with more than 256 colors.

CURE: Make sure that you are using the latest driver. Contact your video card manufacturer. If this does not fix it, try adjusting the number of colors used up or down as well as adjusting the resolution. If this still does not correct the problem, use the standard VGA drivers which ship with Windows. One option you might wish to try is to add the following lines to the SPACEHND.INI file which is located within the application's directory.

```
[Toolbar]
Visible=0
```

```
[Statusbar]
Visible=0
```

These settings disable the toolbar and status bar. Both of the screen elements contain graphic images and they could be the source of your screen driver problems.

SYMPTOM: Attempts to print cause a GPFault or subsequent errors are see in standard Windows components. An example is getting a Divide by Zero error when you attempt to launch Windows WRITE.

CURE: You are probably using a PostScript printer driver or other 3rd party print spooler. The only work around is to use the miscellaneous options and set the Printer ByPass option under the Miscellaneous tab.. Should this error occur, the method to restore your system to normal functionality is to remove your current printer driver (via the Windows Control Panel) and Re-install it.

Peeper

Peeper is a well recieved product which is distributed as shareware. It's primary function is to allow the user to rapidly move about the hard disk using the built in file viewers. Multiple files may be displayed at the same time.

Regarding File Ferret upgrades

The file viewer component of **File Ferret** is not distributed with the shareware version of **File Ferret**. This is because the viewers may not be utilized in the shareware version. Including them would force a shareware evaluator to download a significant amount of non-essential bytes.

From time to time, improvements will be made to the file viewer components. Unless you are experiencing a problem, it is probably not necessary to upgrade your viewers everytime a new release of **Peeper** is made available. You should contact [Fineware Systems](#) if you have any questions on whether you should upgrade your existing viewers.

P. & A. Shareware

Fineware programs can be registered locally in Japan. For more detail and information on prices, etc. contact:

P. & A. Shareware

1-3-6-2 Kamisunacho
Tachikawa, Tokyo 190 Japan

Tel: 0425-35-9901
Fax: 0425-35-9902

Nifty: PAF02461

Selected Disk Drives

You may highlight as many disk drives as desired and search against all of them in a single pass.

Available Drives

You may select as many disk drives as desired and search them all in a single pass.

Select all drives

Use this button to select all disk drives.

Drive Selection Tab

This tab displays the tab entry (shown) for selecting the desired disk drives for the search.

Available Disk Drives

The selected disk drives for the current search are displayed on this ribbon.

Multiple starting points

You may search multiple starting points on the same disk drive. By checking this box, you will alter the tabbed dialog so that it shows a list of selected starting points. Once this option is selected, each desired starting point (including root directories) must be included in the list for the search to function.

Select Starting Directories

See [Select Multiple](#)

[Starting Directories](#)

See [File Pattern Mask](#)

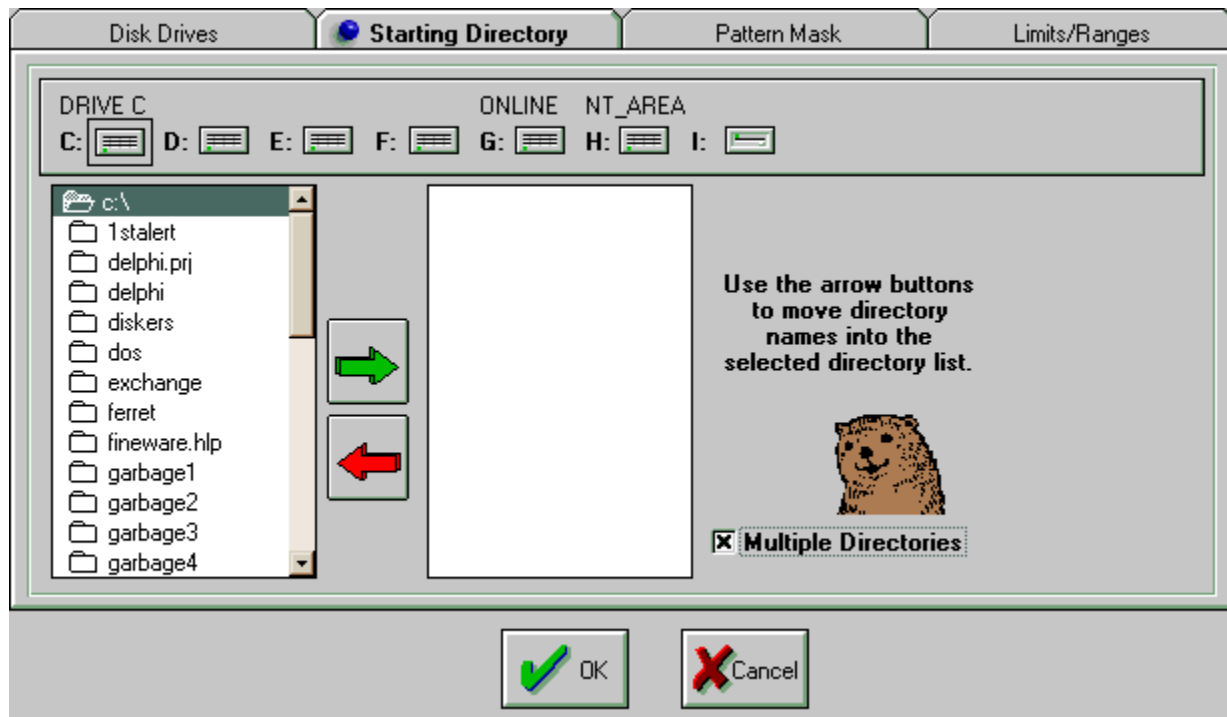
[Setup](#)

Select starting directory by selecting the desired disk drive, then selecting the starting point within the directory to begin the map. Press the OK button (or ENTER key) to begin the process.



Select Multiple Starting Directories

See [File Pattern Mask Setup](#)

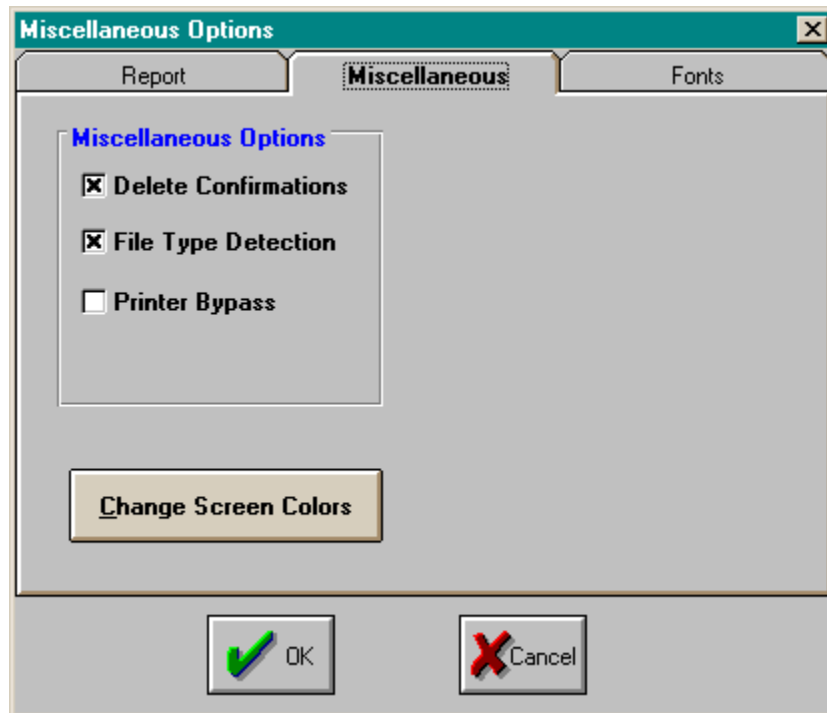


File Pattern Mask Setup

File Ferret can search using a virtual unlimited list of file patterns.



Misc Ops: Miscellaneous





Misc Ops: Set Fonts

Miscellaneous Options [X]

Report Miscellaneous **Fonts**

Font

| | Current Font | Current Font Size | Bold |
|--------------------|----------------|-------------------|------|
| Listbox | MS Sans Serif | 8 | Yes |
| Printer | Arial | 8 | No |
| Fixed Width | OCR A Extended | 14 | No |

 OK  Cancel

Selected Directory Paths

This list contains all of the directories currently scheduled to be searched.

Add Button

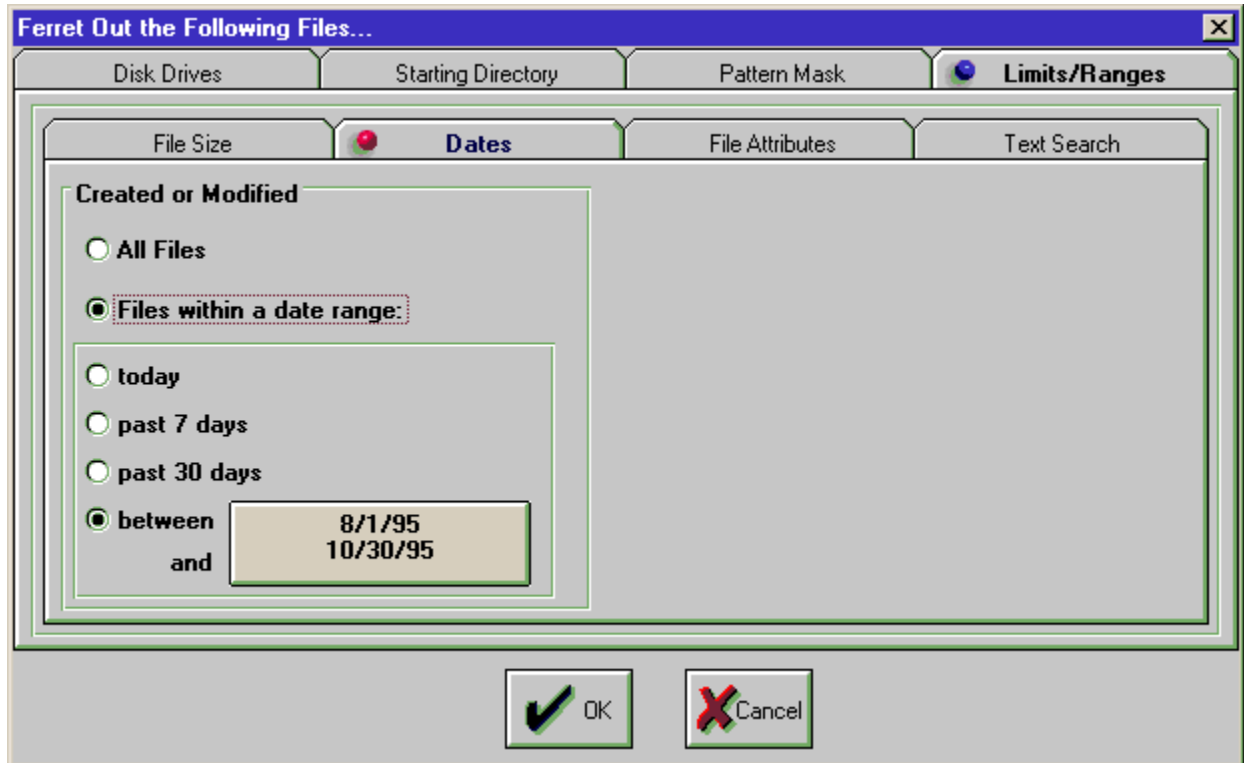
Highlight the directory desired and press the Add Button to add it to the list of directories scheduled to be searched.

Subtract Button

Highlight a directory in the list of directories scheduled to be searched and press this button to **remove** it from the list.

Limits and Ranges

File Ferret offers a number of ways to limit your search to only the files you are interested in finding. This includes date ranges, file size ranges, file attributes, and even embedded text.



Range Check: All Files

Selecting this options causes no files to be excluded because of their creation/modification date.

Range options

Selecting Files within a date range provides the opportunity to restrict the search to a measured point in time.

Size Ranges

Options for allowing the search to be restricted on file size.

File Attributes

Allows the search to be restricted to files which are currently assigned a particular DOS file attribute. This includes the ability to select hidden files, system files, etc.

Text Search

If you don't know the name of a file, sometimes you just have to go for it's contents. File Ferret offers an extremely powerful ability to look inside the file itself for a string of characters.

Glossary



8.3 DOS file name

A

application's directory

application's disk

associated

F

Fineware Systems

G

GO WORD

H

HOT

L

launch

M

masks

MSAPPS

N

nested sub directories

O

orientation

P

processes

programs

PsL

R

Ram drives

S

search parameter

search parameters

search paths

U

unregistered version

processes

An event which takes over the operation of the program. The mouse pointer will turn into the hourglass image during this period and the menu items and toolbar buttons will not function. You may continue to use other Windows applications while a process is underway. An example of a process is the creation of a directory map. The time to completion depends upon the number of directories, the level of nesting used within the directory structure, and the number of files being processed.

unregistered version

This product has been released as shareware in order that you may evaluate the program free of charge. Your licence begins on the day the program is initially run and concludes after 30 days. If you decide not to register, you must cease using the program after the 30 days has elapsed.

Fineware Systems

P.O. Box 75776

Oklahoma City, Ok 73147

Technical support via Commercial Online Services:

CompuServe ID: 70650,2022 (AI Meadows)

Prodigy ID: BBTK05A (AI Meadows)

America Online ID: VB AL (AI Meadows)

Microsoft Network: FINEWARE

Internet:70650.2022@CompuServe.Com and <http://www.fineware.com>

HOT

Hot Spot: Area within a graphic image that when clicked, displayed information about the image or about that part of an image.

nested sub directories

A directory is not a fixed amount of disk storage nor does it physically begin and end on any hardware based boundary. A directory can contain files. A directory can also contain other directories. The term nested sub directories refers to the set of directories within a particular parent directory. Nesting directories can greatly simplify management of your hard disk by allowing distinct categories of data. An example might be to create a directory into which all of your spreadsheet documents would be placed. Please refer to your Windows documentation or the Windows Program Manager HELP file for instructions on creating new directories.

search parameters

Selected limits which qualify the drive(s) and/or starting directory to be used in producing the reports and displays.

8.3 DOS file name

DOS naming convention. A file name can consist of a name (from 1 to 8 characters) a period and an extension (from 0 to 3 characters).

search parameter

Selected limits which qualify the drive(s) and/or starting directory to be used in producing the reports and displays.

PsL

Public (software) Library

P.O. Box 35705

Houston, TX 77235-5705

MSAPPS

MSAPPS is frequently used to store components from various Microsoft applications which can be shared between multiple Microsoft applications such as Microsoft Word and Microsoft Excel.

application's directory

Directory where File Ferret's executable module (FERRET.EXE) is located.

application's disk

Disk where File Ferret's executable module (FERRET.EXE) is located.

Ram drives

A drive created from memory. Please refer to your DOS or Windows manuals for information on creating and using Ram Drives.

search paths

Subset of a network volume which begins at a specific directory level. Contact your network administrator for help on identifying search path volumes.

orientation

Portrait or landscape. Portrait is the normal setting for letters, landscape is more often used for reports.

launch

This mean run or execute.

programs

In general, files with the extension following extensions:

.EXE

.BAT

.COM

.PIF

are considered programs and may be launched by File Ferret.

associated

Windows establishes file associations with certain types of file extensions. .TXT files are normally associated with the NOTEPAD.EXE applet which is shipped with Windows. Other applications will also register the file extension names commonly used by the application.

masks

Allows wildcard matching on file names.

GO WORD

A GO word allows you to transfer from one location to another while online with CompuServe. It is used by typing GO xxxxxx (the go word) at any "!" Prompt.

