

Safety Net

Safety Net is a small utility for backing up critical files. It has one default setting and three that are options of your choosing.

The preset setting will backup your critical Windows and system files. The program will automatically copy all "DAT", "INI", and "INF" files from both your windows and windows\system directories. At the same time the program will copy your "config.sys" and "autoexec.bat" files as well.

Windows Options

Safety Net is set up to automatically find your "windows" directory on its own, so if you simply wish to use the default backup, just hit START. If, however, you would like to add some file extension types you must first click on the OPTIONS button. This will bring you to the Options dialog screen.

File Extensions For Backup

One area of the Options screen is titled "File Extensions For Backup". If you type "PIF", for example, in one of the text boxes, Safety Net can then copy your PIF files along with the others. There are five additional choices available.

Create Subdirectories

This option, if selected, will put each file type in a separate subdirectory from the other file types. Whether or not this option is checked, Safety Net will look for each default and any user specified file types in both the "windows" and "windows\system" directories, and copy them to separate directories. In other words "windows" and "system" files will be kept separate. If this box is checked, however, there will then be another level of separation. It will create "windows\ini", "windows\dat", "windows\system\ini" subdirectories, and so on, on the destination disk. If you select "Backup" from the menu of the main screen, one of the sub-menus is "Create Subdirectories". This is exactly the same as the "Create Subdirectories" box on the "Options" screen. If one is selected the other is also selected.

Destination Directory

The default is **Windows**, but you can change it to anything you like. You are free to use nested directories, if you prefer. If the files are to simply be copied, the name you choose here will be the directory that the files are copied into. If you choose to ZIP the files, this will be the name of the ZIPfile (if you choose to used a nested directory structure here, the ZIPfile will be named using the final subdirectory name).

Exiting the Options Screen

Clicking on OK will then bring you back to the main screen. Here you can uncheck any of the selected options if you do not want to copy that particular file type.

Destination Drive

You can backup to any drive you like. The default is "A", but, if you wish to change that, type in the drive of choice in the box titled "Backup to drive..." in the main program screen.

Zip Files

The last option available is whether you wish to ZIP the files to your disk. In order for this option to function you must have a copy of PKZIP somewhere in your path. Checking the appropriate box in the main screen will invoke this function.

Other Options

If you have not gone through the "Windows Options", please do so before continuing with this section. Once you have backed up your Windows files you should have a pretty good sense of what to do with your other options.

If you work with a database program, for example, and have several databases that you are constantly adding to or otherwise manipulating, you can set up Safety Net to easily back those database files to a disk. From the main program screen, click on the Option 2 button, and then click on OPTIONS to go to the Options screen.

Directory Source For Backup

Use your mouse here to select the directory that contains the files you wish to backup. The directory chosen will appear in the text box at the bottom.

File Extensions For Backup

In the "File Extensions For Backup" text boxes, type in the extension(s) you wish to backup (such as MDB for example). You can copy up to 5 file types for each configured option. If you want to backup an entire directory, then leave the text boxes blank and check **All**.

OptionName

The name that you enter here will be the name shown for the backup option on the main program screen. It has no real function other than as a personal reference. For our example, enter a name such as "Database".

Destination Directory

You must enter a name in the Destination Directory. You are free to use nested directories, if you prefer. If the files are to simply be copied, the name you choose here will be the directory that the files are copied into. If you choose to ZIP the files, this will be the name of the ZIPfile (if you choose to use a nested directory structure here, the ZIPfile will be named using the final subdirectory name). For our example, you could put "Database" here also.

Search Subdirectories

Safety Net is capable of searching subdirectories for your file types. This function can be enabled by checking "Search Subdirectories". The program is capable of searching seven directories deep, so if you have any of your file types buried deeper than that, you will have to adjust your directory source accordingly.

Exiting the Options Screen

Once your options are all set, click on OK to return to the main program screen.

Destination Drive

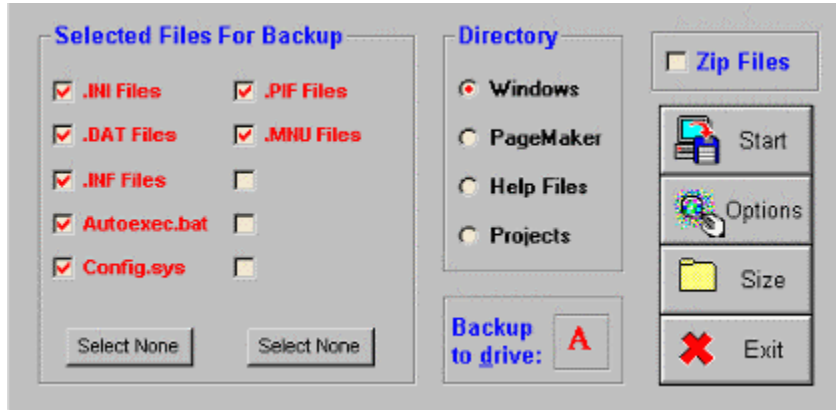
You can backup to any drive you like. The default is "A", but, if you wish to change that, type in the drive of your choice in the box titled "Backup to drive..." in the program's main screen.

Zip Files

If you have a great number of files to copy, try checking the "Zip Files" option, or don't, as you wish. You must have PKZIP in your **path** in order for this option to work. Checking the appropriate box in the main screen will invoke this function. Then click on START.

Visual Overview

Click on any section of the image below for an explanation of it's function. Be certain to click on the OPTIONS button.



If this box is checked Safety Net will ZIP the selected files to your backup disk. You must have PKZIP somewhere in your path for this option to work.

[Click here to exit the program.](#)

Clicking on START will initiate the backup. You will be prompted to insert a disk into the selected drive, and the selected files will then be copied.

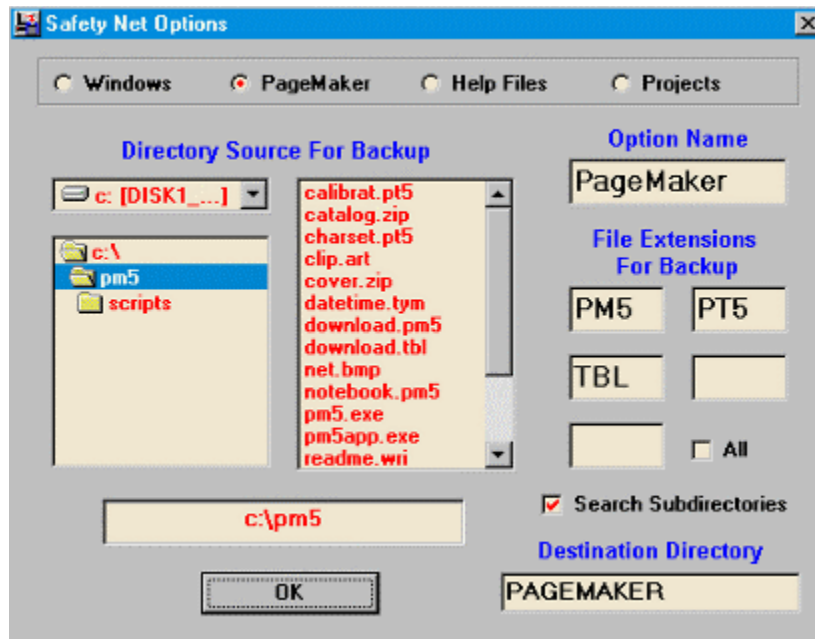
"Windows" is selected when the program starts. If you wish to backup files from a previously configured option, make that selection here.

Choose the backup drive here. The default is drive A, but if you wish to change it, backspace the "A" out and type in your selection here.

All valid entries will be selected for backup automatically. By clicking on the various options, you can de-select each individually or as a group here.

Options Screen

Click on any section of the image below for an explanation of it's function.



For the Windows option, the default destination directory is "Windows". You may change it if you wish. For the other user defined options you must type in a name here. You are free to use nested directories, if you prefer. If the files are to simply be copied, the name you choose here will be the directory that the files are copied into. If you choose to ZIP the files, this will be the name of the ZIPfile (if you choose to used a nested directory structure here, the ZIPfile will be named using the final subdirectory name).

[Click here to leave the Options screen and return to the main program screen.](#)

Browse to find the desired directory for backup here so that the complete path is in the text box at the bottom.

These option buttons correspond to the "Directory" section of the main screen. Whatever name you enter for "Option Name" will appear for both button names.

Enter the particular file extensions for backup here. There are 5 selections available for each option. Whatever you enter here will appear in the "Selected Files For Backup" section on the main screen.

The name that you enter here will appear as the available directory names for backup on both this and the main screens.

Available for the "Windows" option, if "Create Subdirectories" is selected, Safety Net will put each file type selected for backup in separate subdirectories on your disk. For example, if you are backing up *.INI and *.DAT Files, Safety Net will create INI and DAT subdirectories in order to keep the file types separate.

For the other options, the caption changes to "Search Subdirectories". If checked, Safety Net will search nested directories (six levels only) for your selected file types. The program will not create separate directories on your backup disk, so if there are two files with the same name, one **will** be overwritten.

Menu Items

Backup Menu

Start

Options

Get Size

Create Subdirectories

Search Subdirectories

Make Boot Disk

Exit

Invoking this function will bring up a dialog screen which will return the exact size of the configured backup, and show you a list of the files selected. This information can be helpful in determining whether or not to ZIP the files. You may print out this list if you wish, or you may copy the list to the clipboard so that you can then open a text editor such as Notepad and save the list to a file. You can also print out your directory tree from here. If you choose the root directory before invoking this function, Safety Net will print out your complete tree. This hard copy would be invaluable to have in case of a hard drive failure.

Invoking this function will create a boot disk for the computer. You must select a floppy disk drive first. It is very important to have a boot disk on hand. In case of a hard disk failure, a boot disk is the only way you will be able to access your computer.

Registration

This program was written by:

Ron Parker
CT Software
759 Galleon Ln.
Elk Grove, IL 60007

This program is shareware, and, as such, may be used freely for a period of 30 days. If, after the 30 day evaluation period expires, you find this nifty little utility useful, and plan to continue using it, you are required to register the program.

By supporting the shareware concept you are helping to ensure its continuation, which, I think you'll agree, will benefit us all.

If you wish to register the program, please send a check in the amount of \$12.00 to the above address. Be sure to include your name, address, e-mail address, and the exact name of the program, so that we can immediately send you the registration information. If you would prefer to receive an installation disk, please include \$2.00 to cover shipping and handling.

If you are a CompuServe subscriber, this program can be registered in the SWREG forum. The registration number is 8263.

Compuserve: 75264,3237

AOL: RON2222

Internet: ron2222@aol.com

In either your "CONFIG.SYS" or "AUTOEXEC.BAT" file there will be a **path** statement such as:

```
PATH C:\WINDOWS;C:\DOS;C:\;C:\BATFILES;C:\MENU;C:\MOUSE
```

(or)

```
SET PATH = C:\WINDOWS;C:\DOS;C:\C:\BATFILES;C:\MENU;C:\MOUSE
```

The file "PKZIP.EXE" **must** be in one of the directories specified in this line(s). If it is not you can add the directory holding the file to your path by adding it to the end of the line. It must be preceded by a semicolon to separate it from the previous entry.

