

## Welcome to the Crystal Walls Trial Version

Crystal Walls strips away the Windows desktop to reveal animated 3-D worlds that transform your computer into a playful personal space. Better than a screen saver, Crystal Walls keeps you company while you work!

**This full working copy of Crystal Walls includes a sample set of Crystal Walls worlds. This is not free software! You may use this Trial Version for evaluation purposes only. Please limit your evaluation period to 30 days. After 30 days, you must purchase a licensed retail copy to continue using it.**

**Expand your horizons with the complete set of 18 worlds in Crystal Walls 1.0. Call toll free in the U.S. at 1.800.V.WORLDS, or see the file CWORDER.TXT for more details.**

Click one of the topics below to get started with Crystal Walls. (You may need to use the scrollbar to view further down the page.)

This Help system is available to guide you whenever you use Crystal Walls. Just click **Help** in Crystal Walls to view a topic tailored to your location in the program. If you're new to using Help, click Using Crystal Walls Help for a quick overview of the basics.

If you encounter problems using Crystal Walls that are not addressed in the printed Guide or other Help sections, be sure to check the Help topics **Troubleshooting** and **Common questions and known problems**.

**IMPORTANT:** If you have an ATI Mach 8 or Mach 32 video display adapter card, you should read the topic Hardware problems right away. (If you are unsure what kind of video card you are using for your display, run the Windows Setup utility from the Accessories group in Program Manager.)

Click...	to see...
<u>License agreement</u>	The license agreement that specifies how you can install and use Crystal Walls.
<u>Starting Crystal Walls</u>	How to start up Crystal Walls.
<u>The Crystal Walls Lobby</u>	The Crystal Walls Lobby and how to use it to preview or enter worlds.
<u>Restarting Crystal Walls</u>	How to automatically enter a Crystal Walls world whenever you start Windows.
<u>Troubleshooting</u>	General troubleshooting help and explanation of error messages.
<u>Common questions and known problems</u>	Late-breaking information about Crystal Walls, including solutions to common problems, any known problems with specific hardware devices or other software, and corrections to the printed Guide.
<u>Customer feedback</u>	Information on how to contact Domain Virtual Worlds, Inc. to register your copy of Crystal Walls, to receive technical support, or to tell us what you like best about Crystal Walls.

Copyright (c) 1994 Domain Virtual Worlds, Inc. All rights reserved. No part of this publication may be reproduced, transmitted, transcribed, stored in a retrieval system, decompiled, or translated into any language without the written consent of Domain Virtual Worlds, Inc.

## Using Crystal Walls Help

**Note:** You can also press **F1** to view Windows Help on using Help.

Each help screen contains information on one topic. You can resize the Help window just like any other window.

If a topic contains more information than can fit on one screen, use the scroll bars to view the remaining topic information.

You can print any of the Help topics in the Crystal Walls Help system. First, view the topic you want to print, then select **Print topic** from the **File** menu at the top of the Help window.

Each topic screen also contains a list of related topics, shown in green on color monitors and underlined on monochrome monitors. To read the information about the related topic, point to the topic and click. (The cursor will change to a hand as you move it over the green or underlined text.)

Crystal Walls Help also contains pictures of the dialog boxes found in Crystal Walls. To learn more about the dialog box options, position the mouse pointer over the option. The pointer will change from an arrow to a hand. Click to display a pop-up box; click again to hide the pop-up box.

Occasionally, the pop-up boxes contain jumps to related topics; click on the jump in the pop-up box to view the topic.

You can also search for keywords and view information about a specific topic. To search for a topic, click the **Search** button, located at the top of the Help window.

---

### **See also**

[Welcome](#)

# License Agreement

**This is a single-user software license agreement. Site licenses are available directly from Domain Virtual Worlds. See [Customer feedback](#) for contact information.**

## **BY OPENING THE SEALED DISK PACKAGE, YOU AGREED TO BE BOUND BY THE TERMS OF THIS AGREEMENT.**

1. **GRANT OF LICENSE.** Domain Virtual Worlds, Inc. ("DVW"), grants you the nonexclusive right to use one single-user copy of the software program (the "Software") on a single computer subject to the terms and restrictions set forth below. You may not network the software or otherwise use it on more than one computer at the same time, unless you obtain a separate network or site license, which is available directly from DVW.

2. **COPYRIGHT.** The Software and the accompanying user's manual (the "Manual") are the proprietary and copyrighted materials of DVW, and all title thereto, and to all copies thereof in any form, remains with DVW. DVW grants you the right to make one copy of the Software for backup purposes only. DVW also grants the right to transfer the Software to a single hard disk provided you keep the original disks for backup purposes.

3. **OTHER RESTRICTIONS.** You may not rent or lease this Software or the Manual. However, you may transfer the Software, the Manual and all related materials as long as you retain no copies of the Software or the Manual and the receiver of the transfer agrees to be bound by this license. You may not decompile, disassemble, or otherwise reverse engineer the Software.

4. **LIMITED WARRANTY.** DVW warrants to the initial end user only that the Software will be capable of performing substantially as described in the Manual for a period of 30 days from the date of receipt. Any implied warranties on the Software and other related materials are limited to 30 days from the date of receipt by the initial end user. SOME STATES DO NOT ALLOW LIMITATIONS ON DURATION OF AN IMPLIED WARRANTY, SO THE ABOVE LIMITATION MAY NOT APPLY TO YOU. THIS LIMITED WARRANTY GIVES YOU SPECIFIC LEGAL RIGHTS, AND YOU MAY ALSO HAVE OTHER RIGHTS WHICH VARY FROM STATE TO STATE.

5. **REMEDIES. AS DVW'S ENTIRE LIABILITY AND AS YOUR EXCLUSIVE REMEDY** for any breach of warranty, DVW will, upon written notice to DVW during the warranty period at the address set forth below, either (at its option) repair or replace the defective diskettes or the defective portion of the Software, or refund the license fee paid for such Software. Upon issuance of any refund, the license granted herein shall terminate and you must cease all use of the Software.

6. **NO OTHER WARRANTIES. EXCEPT FOR THE FOREGOING, DVW DOES NOT MAKE ANY WARRANTIES, EXPRESS, IMPLIED (INCLUDING WITHOUT LIMITATION ANY WARRANTIES OF MERCHANTABILITY AND FITNESS FOR A PARTICULAR PURPOSE) OR ARISING BY LAW, REGARDING THE SOFTWARE OR THE MANUAL.**

7. **LIMITATION OF LIABILITY. IN NO EVENT SHALL DVW BE LIABLE FOR ANY THIRD PARTY CLAIMS OR FOR ANY INCIDENTAL, CONSEQUENTIAL OR SPECIAL DAMAGES WHATSOEVER, ARISING OUT OF ANY BREACH OF WARRANTY OR THE PERFORMANCE OR BREACH OF ANY OTHER PROVISION OF THIS AGREEMENT OR THE USE OR INABILITY TO USE THE SOFTWARE OR THE MANUAL, EVEN IF DVW HAS BEEN ADVISED OF THE POSSIBILITY OF SUCH DAMAGES. IN NO EVENT SHALL DVW'S LIABILITY (WHETHER IN TORT, CONTRACT OR OTHERWISE) EXCEED THE LICENSE FEE PAID TO DVW FOR THE SOFTWARE.**

SOME STATES DO NOT ALLOW THE EXCLUSION OR LIMITATION OF LIABILITY FOR CONSEQUENTIAL OR INCIDENTAL DAMAGES, SO THE ABOVE LIMITATION MAY NOT APPLY TO YOU.

8. **TERMINATION.** This license shall automatically terminate if you breach any of the terms and conditions set forth herein. Upon termination, you agree to return all copies of the Software to DVW and to permanently erase the copy of the Software on the hard disk.

9. **GOVERNMENT RESTRICTED RIGHTS.** The Software and Manual are provided with restricted rights. Use, duplication or disclosure by the Government is subject to restrictions as set forth in subparagraph (c)(1)(ii) of the Rights in Technical Data and Computer Software clause at DFARS 252.227-7013. Contractor/manufacturer is Domain Virtual Worlds, Inc., 1202 East Pike Street, Suite 1400, Seattle, WA 98122.

10. **GENERAL.** This Agreement is intended as a legally binding agreement which will be enforced, in whole or in part, to the greatest extent permissible under law, and is the entire agreement between you and DVW, which supersedes any prior or contemporaneous oral or written proposals, statements, understandings or agreements. This Agreement is governed by the laws of the State of Washington.

**See also**

---

[Welcome](#)

[Customer feedback](#)

## Using Crystal Walls

When you start Crystal Walls, the Lobby appears, which you use to browse or enter worlds. You can also set options within a world (such as the rate of activity and number of characters in a world) or for all worlds (such as the number of colors to display, when sound effects play, and so on). Crystal Walls even lets you run installed Delrina screen saver modules as worlds.

Of course, once you're in a world, you can quickly pause the world's activity, leave the world, or exit Crystal Walls.

To learn more about using Crystal Walls click a topic listed below:

[Starting Crystal Walls](#)

[The Crystal Walls Lobby](#)

[Getting into worlds quickly](#)

[Pausing the activity in a world](#)

[Leaving a world](#)

[Restarting Crystal Walls](#)

[Using Crystal Walls with screen saver applications](#)

---

### ***See also***

[Welcome](#)

## Starting Crystal Walls

After you've installed Crystal Walls on your hard disk, you can start Crystal Walls.

To start Crystal Walls, double-click the Crystal Walls icon in the Windows Program Manager or File Manager.

You can also start Crystal Walls by choosing Run from the File menu in the Windows Program Manager or File Manager, typing the directory and CWALLS.EXE, and clicking **OK**.

After you start Crystal Walls, the Lobby appears, so that you can select the world you want to enter, or set options or remove any installed worlds.

### **See also**

---

[The Crystal Walls Lobby](#)

[Getting into worlds quickly](#)

[Pausing the activity in a world](#)

[Leaving a world](#)

[Exiting Crystal Walls](#)

[Restarting Crystal Walls](#)

[Using Crystal Walls with screen saver applications](#)

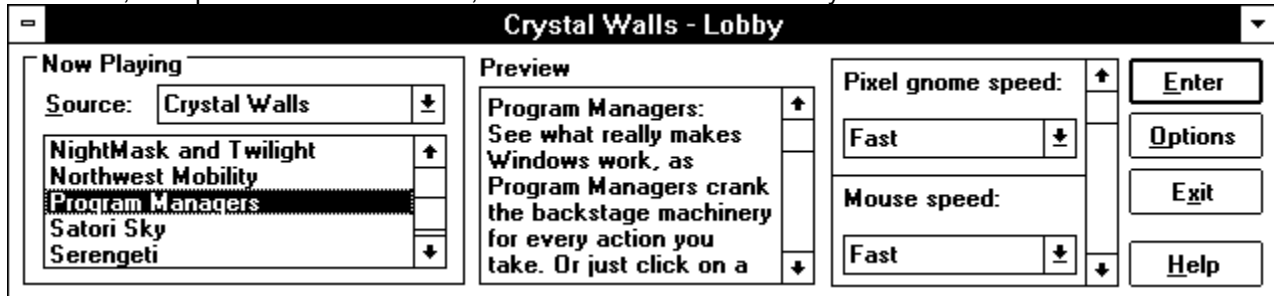
[Welcome](#)

[Using Crystal Walls](#)

## The Crystal Walls Lobby

The Lobby contains a ticket booth and a movie poster of the current world. The movie poster shows a sample image of the world and the names of the artists and programmers who created it.

You use the Lobby to browse through the worlds, choose the world you want to see, set any options for that world, set options across all worlds, and to enter worlds or exit Crystal Walls.



**Note:** Click on a dialog box control to learn more about it.

If you don't have a mouse, you can choose commands and select worlds using your keyboard. All dialog boxes within Crystal Walls use standard Windows conventions. For example, you can access dialog box controls by pressing **Alt** and the underlined letter of the control name, and you can move among the controls by pressing **Tab**.

For additional information about using your keyboard in the Lobby, see [Software problems](#).

---

### See also

[Welcome](#)

[Using Crystal Walls](#)

[Starting Crystal Walls](#)

[Browsing the worlds](#)

[Setting world options](#)

[Entering a world](#)

[Exiting Crystal Walls](#)

[Using Crystal Walls with screen saver applications](#)

## Browsing the worlds

If you want to browse through the worlds before entering one, you can preview each of the worlds you installed. Browsing gives you an idea of what the world looks like, what characters inhabit the world, and what type of activity you can expect so you can choose a world that fits your particular mood.

### To preview a world:

1. If necessary, choose Crystal Walls for Source in the Now Playing box.
2. Choose a world from the Now Playing list box.

### When you select a world

- The description of the world, the characters, and their actions appear in the Preview text box. If the characters are aware of you or if you can affect the world, descriptions of these character reactions also appear here.
- Optional settings for the world appear in the Settings box. Settings can include the number of characters in the world, the speed at which they move, and so on.
- The movie poster in the Lobby displays a sample scene from the world and lists the names of the artists and programmers who created the world.

### See also

---

[The Crystal Walls Lobby](#)

[Setting world options](#)

[Entering a world](#)

[Leaving a world](#)

[Exiting Crystal Walls](#)



## Setting world options

Each world has a variety of options that you can set before you enter the world. When you select a world, controls for the world appear in the Settings box of the Lobby. If more controls are available than can fit in the Settings box, use the scroll bar on the right to view other controls. The options you set are applied to the selected world when you enter it. Also, Crystal Walls remembers the option settings and applies the settings each time you enter the world.

**Note:** *The settings you choose affect the amount of processing time or system resources necessary to produce smooth animation. Since Crystal Walls always gives priority to other applications, you may see a decrease in the performance of the animation on some systems if, for example, you select too many characters or too rapid a rate of change in the world. If this happens, choose fewer characters or a slower rate of change.*

### See also

---

[The Crystal Walls Lobby](#)

[Browsing the worlds](#)

[Entering a world](#)

[Exiting Crystal Walls](#)

[Setting Crystal Walls options](#)

## Entering a world

You can enter a Crystal Walls world in one of three ways. First display the Lobby. Then, choose one of the following ways to enter a world:

- Double-click the name of the world in the Now Playing box.
- Choose the name of the world in the Now Playing box, then click **Enter**.
- Choose the name of the world in the Now Playing box, then double-click the movie poster in the Lobby.

When you enter a world, Crystal Walls minimizes and the world fills your screen behind any icons or open windows. If you open an application or utility, the new application or utility appears in front of the world. Even though applications may block part of the world, the action within the world continues and will be visible on all parts of your screen not obscured by an open application, utility, or an icon.

### ***See also***

---

[The Crystal Walls Lobby](#)

[Browsing the worlds](#)

[Setting world options](#)

[Getting into worlds quickly](#)

[Pausing the activity in a world](#)

[Leaving a world](#)

[Using Crystal Walls with screen saver applications](#)

[Exiting Crystal Walls](#)

[Error messages](#)

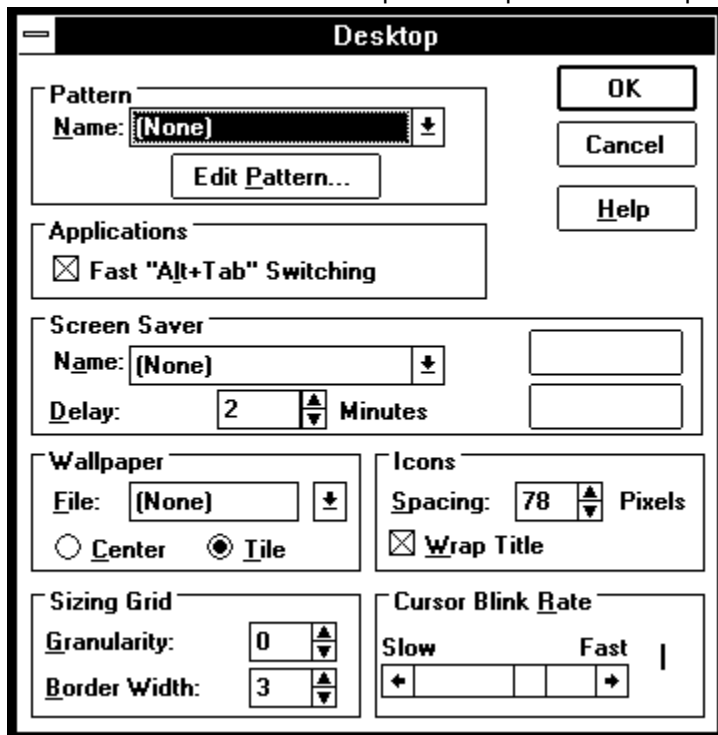
## Getting into worlds quickly

Crystal Walls tears away the Windows wallpaper from your desktop to reveal worlds inside your monitor. However, Crystal Walls remembers your previous desktop pattern and wallpaper. Whenever you enter a world, Crystal Walls removes the pattern and wallpaper; when you leave a world, Crystal Walls redisplay the pattern and wallpaper. You may have to wait a few moments for the desktop pattern and wallpaper to reappear.

If you find that you always use Crystal Walls and never use the wallpaper, or if you want to view several worlds, you can reduce the time it takes Crystal Walls to enter worlds. To do this, remove the desktop pattern and wallpaper selections.

### To modify your Pattern and Wallpaper settings:

1. Double-click the Windows Control Panel icon to open the Control Panel.
2. Double-click the Desktop icon to open the Desktop dialog box.



**Note:** Click on a dialog box control to learn more about it.

3. To change the Pattern, choose None from the Name drop-down list.
4. To change the Wallpaper, choose None from the File drop-down list.
5. Click **OK** to close the Desktop dialog box.

### See also

---

[Using Crystal Walls](#)

[Starting Crystal Walls](#)

[Entering a world](#)

[Pausing the activity in a world](#)

[Leaving a world](#)

[Restarting Crystal Walls](#)

## Pausing the activity in a world

Crystal Walls continually monitors the amount of time the system spends processing instructions from other applications to determine how much it may use. If an open application demands more processing time, Crystal Walls reduces its needs accordingly. In addition, if you maximize an application, Crystal Walls immediately suspends all activity, so the application has full use of the system.

There may be other times during high-speed communication sessions, for instance when you want your system to be devoted exclusively to a task. At these times, you can manually pause the activity in a world without leaving it. When you pause a world, all actions and sound effects in the world immediately cease, and your active application can make full use of available processing time. When you resume the activity in a world, the action in a world continues where it left off.

### **To pause a world, you can:**

- maximize any application or utility.
- click the Pause button, if it is displayed.

### **To resume a world, you can:**

- restore or minimize any maximized applications or utilities.
- click the Pause button, if it is displayed.

For additional information about pausing the activity in Crystal Walls worlds, see [Common questions](#).

### **See also**

---

[Using Crystal Walls](#)

[Starting Crystal Walls](#)

[Entering a world](#)

[Getting into worlds quickly](#)

[Setting Activity options](#)

[Leaving a world](#)

[Restarting Crystal Walls](#)

## Leaving a world

If you want to view a different world, you must first leave the current world. Leaving the world closes the world but does not exit Crystal Walls.

### **To leave a world:**

Double-click the minimized Crystal Walls icon.

The world closes and the Lobby appears so you can choose another world.

Occasionally you may want to leave a world without choosing another or exiting Crystal Walls. To do this, you return to the Lobby and minimize the Crystal Walls application.

When you minimize Crystal Walls, the desktop displays your previously-selected desktop pattern and wallpaper. When you want to enter a world, you can quickly access the Lobby by double-clicking the Crystal Walls icon.

### ***See also***

---

[Using Crystal Walls](#)

[Starting Crystal Walls](#)

[Browsing the worlds](#)

[Entering a world](#)

[Getting into worlds quickly](#)

[Pausing the activity in a world](#)

[Exiting Crystal Walls](#)

[Restarting Crystal Walls](#)

## Exiting Crystal Walls

You can close and exit Crystal Walls using one of the methods described below.

### **To exit Crystal Walls:**

From the minimized application, click the Crystal Walls icon and choose Close from the pop-up menu.

From the Lobby, click **Exit** or choose Close from the Control menu.

### **See also**

---

[The Crystal Walls Lobby](#)

[Starting Crystal Walls](#)

[Browsing the worlds](#)

[Setting world options](#)

[Entering a world](#)

[Leaving a world](#)

[Restarting Crystal Walls](#)

## Restarting Crystal Walls

Crystal Walls remembers the world you last viewed. When you restart Crystal Walls, the world you viewed last is already selected in the Now Playing box. You can even set Crystal Walls so that each time it starts, it bypasses the Lobby and automatically enters the world you viewed most recently.

Of course, you can easily change the world you are viewing. Simply leave the world to enter the Lobby, then select a different world. The next time you start Crystal Walls, it remembers your new selection.

### To start Crystal Walls with a world running:

1. Click the Crystal Walls icon in the Program Manager.
2. Choose Properties from the File menu in the Program Manager.  
The Program Item Properties dialog box appears.

**Note:** You can also press *Alt* and double-click the Crystal Walls icon to display the Program Item Properties dialog box.

3. Check **Run Minimized**, then click **OK**.

You can also set Crystal Walls to automatically enter a world whenever you start Windows.

### To start Crystal Walls whenever Windows starts:

1. In the Program Manager, press and hold *Ctrl*, then drag the Crystal Walls icon to the StartUp group window.
2. Click the Crystal Walls icon in the StartUp group window.
3. Choose Properties from the File menu in the Program Manager. The Program Item Properties dialog box appears.
4. Check **Run Minimized**, then click **OK**.

Whenever you start Windows, the Crystal Walls world you selected will automatically appear.

### See also

---

[Using Crystal Walls](#)

[Starting Crystal Walls](#)

[The Crystal Walls Lobby](#)

[Getting into worlds quickly](#)

[Pausing the activity in a world](#)

[Leaving a world](#)

[Exiting Crystal Walls](#)

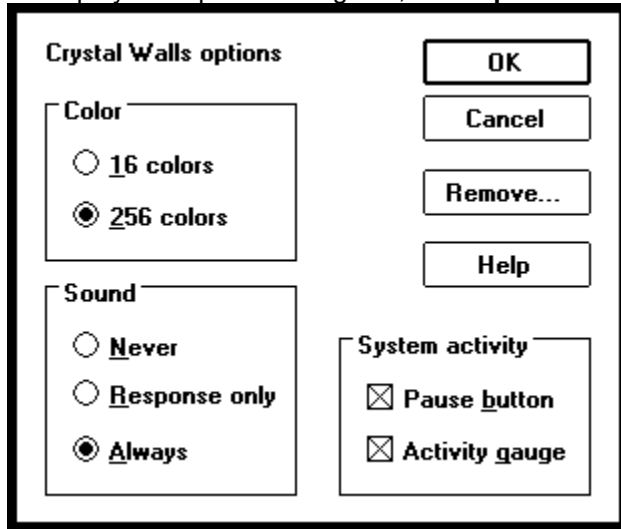
## Setting Crystal Walls options

You can set options that apply to all worlds within Crystal Walls. You set these options or remove worlds using the Options dialog box. You use the Options dialog box to set options for colors or sound effects that apply to all worlds.

remove a world from your hard disk.

display the System Activity gauge or Pause button when viewing a world.

To display the Options dialog box, click **Options** in the Lobby.



The screenshot shows a dialog box titled "Crystal Walls options". It contains several controls: a "Color" section with radio buttons for "16 colors" and "256 colors" (the latter is selected); a "Sound" section with radio buttons for "Never", "Response only", and "Always" (the latter is selected); a "System activity" section with checkboxes for "Pause button" and "Activity gauge" (both are checked); and a vertical stack of four buttons on the right: "OK", "Cancel", "Remove...", and "Help".

**Note:** Click on a dialog box control to learn more about it.

### See also

---

[Setting color options](#)

[Setting sound effects options](#)

[Setting Activity options](#)

[Removing a world](#)

[Setting world options](#)



## Setting color options

Most of the worlds contain rich, vibrant colors, which look best when displayed in 256 colors. However, Crystal Walls gives you the option of displaying the worlds in 16 or 256 colors. You can tell Crystal Walls to display those worlds with 256 colors or, to better manage your system resources, limit the number of colors to 16.

The number of colors your monitor can display depends on the type of video display adapter card installed in your computer. Even if your card is capable of displaying 256 colors, you may prefer to display only 16 colors to free system resources. You can tell whether your monitor is displaying 16 or 256 colors by checking Windows Setup, which usually appears in the Main group window in the Program Manager.

Crystal Walls always defers to other applications, so that they have the priority in using the Windows 256-color palette. If other applications are using many colors in the palette, Crystal Walls displays the best possible version of its world using the remaining colors and those in use by other applications.

Select **16 colors** to view worlds using the 16 standard VGA colors. You may want to view worlds in 16 colors if you have applications running which use the 256-color palette.

Select **256 colors** to view worlds with lush textures and in photorealistic detail. If a world uses only 16 colors, the world will not use the 256-color palette even if you select that option.

### **See also**

---

[Color compatibility](#)

[Setting Crystal Walls options](#)

[Setting sound effects options](#)

[Setting Activity options](#)

[Removing a world](#)

## Setting sound effects options

The worlds in Crystal Walls are full of activity and sound effects that accompany the movements or actions of the characters. However, you can control when Crystal Walls plays sound effects.

- Select **Always** to hear a sound effect whenever an event takes place in the world and whenever you click in the world.
- Select **Only in response** to hear a sound effect only when you click in the world.
- Select **Never** to run Crystal Walls silently.

### ***See also***

---

[Sound compatibility](#)

[Setting Crystal Walls options](#)

[Setting color options](#)

[Setting Activity options](#)

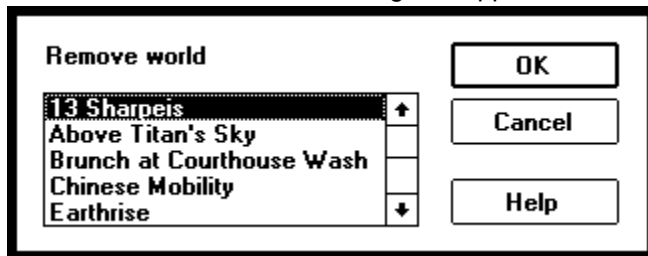
[Removing a world](#)

## Removing a world

If you have limited space available on your hard disk, you can easily remove worlds to free up space. If you find that you want to enter a world that you removed, simply run the installation program to install the world again.

### To remove a world

1. With Crystal Walls running, display the Lobby.
2. Click **Options**.  
The Options dialog box appears.
3. Click **Remove**.  
The Remove world dialog box appears.



**Note:** Click on a dialog box control to learn more about it.

4. Choose the world you want to remove, then click **OK**.

To remove the Crystal Walls application completely, see [Common questions](#).

### See also

---

[Setting Crystal Walls options](#)

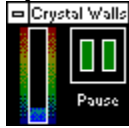
[Setting color options](#)

[Setting sound effects options](#)

[Setting Activity options](#)

## Setting System activity options

You can choose to display a gauge of your computer system's activity and a pause button you can click to interrupt the action in a world. Check the box next to the control's name to display the Pause button or System activity gauge in the lower-right corner of your screen when you enter a world.



**Note:** Click on each activity option to learn more about it.

The Pause button lets you quickly pause or resume the activity in the current world.

Crystal Walls continually monitors the amount of your computer's processing time used by other applications, and dynamically adjusts the resources it uses based on what is available. (Crystal Walls always gives other applications priority in using system resources or processing time, so that you can have maximum productivity.) The System activity gauge indicates how busy the system is with applications other than Crystal Walls. Animation in the current world will slow when other applications place a heavy demand on system processing time.

### **See also**

---

[Pausing the activity in a world](#)

[Setting Crystal Walls options](#)

[Setting color options](#)

[Setting sound effects options](#)

[Removing a world](#)

## Using Crystal Walls with screen saver applications

Screen saver applications activate when the computer has been idle for a designated period of time. As the screen saver runs, it hides all applications, the Crystal Walls world, and icons. You can run a screen saver application at the same time as Crystal Walls.

With Crystal Walls, you can also run an Intermission screen saver module as a Crystal Walls world. Rather than covering up your current applications, however, Crystal Walls runs screen saver modules on the desktop behind applications, just as it runs a Crystal Walls world.

**Note:** *Not all screen saver modules may be appropriate to use concurrently with other applications, especially those modules that modify the appearance of the desktop. Since screen saver modules were not designed to run concurrently with other applications, running screen saver modules may reduce the amount of processing time available for other applications. Typically, any interference is cosmetic (the screen may redraw incorrectly), but it may also slow down your active application.*

### To run a screen saver module as a world:

1. In the Lobby, choose the screen saver type for **Source** in the Now Playing box.  
Crystal Walls searches for compatible modules.
2. Choose the screen saver module you want to run.
3. Change the screen saver options, if needed.
4. Click **Enter** to run the screen saver module on the desktop.

For additional information about running screen saver modules as Crystal Walls worlds, see [Common questions](#).

### See also

---

[Using Crystal Walls](#)

[Starting Crystal Walls](#)

[The Crystal Walls Lobby](#)

[Entering a world](#)

## Troubleshooting

Crystal Walls uses the latest technology to create the active 3-D worlds inside your PC. To do this, Crystal Walls manages what goes on behind the monitor screen, replacing the desktop with three-dimensional space. Crystal Walls also uses shared system resources including sounds and colors (on systems that are support these options).

Crystal Walls is compatible with almost all available hardware and software. If you do experience a problem, it will most likely be in one of three areas:

- color
- sound
- desktop utility programs and other software applications

Most problems will be cosmetic (for instance, the colors shown in the Crystal Walls world are incorrect) or involve a minor inconvenience (such as turning off the sound effects in Crystal Walls).

[Color compatibility](#)

[Sound compatibility](#)

[Compatibility with desktop utility programs](#)

### **See also**

---

[Error messages](#)

[Common questions and known problems](#)

## Sound compatibility

Crystal Walls is compatible with all sound cards capable of playing .WAV sound files. If you have a sound card and have installed the proper sound drivers to support wave audio, you will hear high-quality sound effects in Crystal Walls worlds. Some applications, however, may send sounds at the same time that a sound effect occurs in Crystal Walls. In these instances, the sound effect in Crystal Walls or the sound from the application may be cut short.

If you don't have a sound card, you won't hear the sound effects in Crystal Walls or sounds from other applications. If you don't have a sound card but you hear sound effects, you may have the *Sound Driver for PC-Speaker* (SPEAKER.DRV) utility installed. This utility, available directly from Microsoft, plays sounds through your computer's internal speaker and may cause problems unrelated to Crystal Walls.

- The computer's internal speaker produces poor sound quality that can't take advantage of the high-quality sound effects in Crystal Walls.
- Every time a sound occurs, the speaker driver freezes most application activity for the duration of the sound. (This may interfere with, among other things, any modem communications programs you are running.)

If you want to continue using the *Sound Driver for PC-Speaker* utility, be aware that using it may cause problems. If you have problems, try one of the following:

- In Crystal Walls, turn off the sound effects, or change the sound effects setting to occur only in response to your actions.
- In the Control Panel, open **Drivers** and change the setup for the Sound Driver for PC-Speaker to **Enable interrupts during playback**. This may resolve some problems if sound effects interfere with other applications.

### ***See also***

---

[Setting sound effects options](#)

[Common questions and known problems](#)

[Troubleshooting](#)

[Color compatibility](#)

[Compatibility with desktop utility programs](#)

[Error messages](#)

## Color compatibility

Crystal Walls requires a color monitor to operate properly. You may, however, experience acceptable performance on VGA-simulation grayscale monitors.

If you choose to show worlds in 256 colors, Crystal Walls always gives first color choice to your active application so that it never interferes with full-color applications. Because Windows shares a 256-color palette among color applications, you may see color flashing or unusual color combinations in Crystal Walls while you are working in color-intensive applications. Other than a visual distraction, color flashing is normal and does not affect the performance of your applications.

**Note:** *To eliminate color flashing or incorrect colors in Crystal Walls, reduce the number of colors in Crystal Walls to 16 colors.*

### See also

---

[Setting color options](#)

[Common questions and known problems](#)

[Troubleshooting](#)

[Sound compatibility](#)

[Compatibility with desktop utility programs](#)

[Error messages](#)



## Compatibility with desktop utility programs and other applications

You may encounter cosmetic problems if you run utility programs that alter the desktop. For example:

- Animated wallpaper programs will try to place wallpaper on the Windows desktop that Crystal Walls removed.
- Applications that display animated characters on the desktop may run into problems.
- Desktop utility programs that create an alternate desktop or present multiple desktops will try to locate the desktop that Crystal Walls removed.

To correct a cosmetic problem, maximize and then restore or minimize any application, and Crystal Walls will try to redraw the world correctly. To use the utility or program causing the problem, you may need to turn off Crystal Walls temporarily.

With some desktop utility programs, you can turn off the option in the application that draws the desktop to resolve the cosmetic problems. For details, see the program's documentation.

**Note:** *Screen utilities and Windows video card drivers that appear to create a larger screen, that zoom in on the screen, or that change screen resolution without restarting Windows may cause irresolvable cosmetic conflicts. If you experience these problems, you should not use those utilities or drivers with Crystal Walls.*

### See also

---

[Common questions and known problems](#)

[Troubleshooting](#)

[Sound compatibility](#)

[Color compatibility](#)

[Error messages](#)

## Error messages

If for some reason Windows is unable to open Crystal Walls or Crystal Walls cannot open a world, the system alerts you with one of four messages.

### **Not enough memory or system resources to open Crystal Walls**

This message appears if you try to open Crystal Walls but the system does not have enough available random access memory (RAM) or system resources.

To see how much RAM your system has, choose About from the Help menu in the File Manager or Program Manager. The About dialog box displays the total amount of memory currently available. To free up more memory, close unnecessary applications, then open Crystal Walls.

If you have plenty of RAM available, but are still receiving this message, the system may not have enough available system resources. Cursors, bitmaps, icons, and windows are examples of resources that the system allocates to applications. In this case, close unnecessary applications or windows to free up additional system resources.

### **Not enough memory or system resources to enter this world**

This message appears if you try to enter a world but the system does not have enough available random access memory (RAM) or system resources.

To see how much RAM your system has, choose About from the Help menu in the File Manager or Program Manager. The About dialog box displays the total amount of memory currently available. To free up more memory, close unnecessary applications, then enter a world. Or, try entering a different world.

**Note:** *Different worlds require different amounts of memory or system resources. To estimate the relative amount of memory or system resources required to run a world, look in the Crystal Walls directory at the world (.WLL) files. Larger files typically require more memory or system resources.*

If you have plenty of RAM available, but are still receiving this message, the system may not have enough available system resources. Cursors, bitmaps, icons, and windows are examples of resources that the system allocates to applications. In this case, close unnecessary applications or windows to free up additional system resources. Other solutions you might try include:

- Adjust world options to use less RAM or system resources.
- Set Crystal Walls to display worlds in 16 colors.
- Set your screen driver to a lower resolution. For more information, see your Windows or your video display adapter card vendor's documentation.

### **Not enough room on the hard disk to enter this world**

This message appears if there is not enough room on the hard disk for Crystal Walls to write temporary files.

If the disk designated for storing temporary files does not have enough room, Crystal Walls will not enter the world. Create more hard disk space, then enter the world.

### **Crystal Walls could not enter this world**

This message appears if all the pieces needed to enter the world are not available or for other, nonspecific errors.

If pieces of the world are missing, re-install the world on your hard disk, then enter the world.

## **See also**

---

[Common questions and known problems](#)

[Troubleshooting](#)

[Entering a world](#)

[Sound compatibility](#)

Color compatibility

Compatibility with desktop utility programs

## Common questions and known problems

It's easy to run Crystal Walls smoothly and efficiently with most hardware and software configurations.

To view answers to frequently asked questions and discussion of general concerns using Crystal Walls, click **Common questions**.

In some cases, you might notice a problem running Crystal Walls together with specific hardware devices or other software. Click **Hardware problems** or **Software problems** to view information about known problems with existing hardware or software, and how to avoid these problems. The topic **Software problems** also describes known problems using Crystal Walls features, and problems with specific worlds.

### IMPORTANT:

- If you have an ATI Mach 8 or Mach 32 video display adapter card  
OR
- If you encounter system errors or incorrect colors when entering certain worlds

you should read the topic [Hardware problems](#) right away. Any related problems can be easily resolved.

(If you are unsure what kind of video display adapter card you are using for your display, run the Windows Setup utility from the Accessories group in Program Manager.)

The printed Guide is your best resource for information about using Crystal Walls. To view details updated since the Guide was printed, click **Corrections to the printed Guide**.

[Common questions](#)

[Hardware problems](#)

[Software problems](#)

[Corrections to the printed Guide](#)

### See also

---

[Troubleshooting](#)

[Sound compatibility](#)

[Color compatibility](#)

[Compatibility with desktop utility programs](#)

[Error messages](#)

[Customer feedback](#)

## Common Questions

**Q: Sometimes while running Crystal Walls, particular applications seem to slow down. Is this caused by Crystal Walls? How can I avoid it?**

A: Crystal Walls uses advanced technology to dynamically adjust the amount of processor time it uses based on the needs of your foreground applications. It should not normally slow them at all.

However, there are two cases where you might notice some slowness:

- You are using a feature of a foreground application that is unusually sensitive to processor time usage.
- You have other applications that are also doing background processing.

You can temporarily pause Crystal Walls (and, hence, stop all background processing by Crystal Walls) by clicking the Pause button or by maximizing any application window. For instance, if you maximize your word processor while working in it, Crystal Walls will pause its activity.

For more information on pausing the activity in a world, see [Pausing the activity in a world](#).

**Q: When I work in a full-color program, the colors in Crystal Walls change. How can I restore the correct colors for the Crystal Walls world when I minimize or close the color-intensive application?**

A: If you choose to show worlds in 256 colors, Crystal Walls always gives first color choice to your active application so that it never interferes with full-color applications. Because Windows shares a 256-color palette among color applications, you may see unusual colors in Crystal Walls while you are working in other color-intensive applications.

When you have finished working in a full-color program or set it aside, sometimes Windows retains the color choices of that application. You can easily restore the colors in Crystal Walls at any point by simply clicking once on the Crystal Walls icon.

**Q: I'm concerned about the number of files that some Windows programs install on my hard disk. What files did the Crystal Walls Setup write to my hard disk? Is it easy to remove the Crystal Walls program files if necessary?**

A: The Crystal Walls Setup program creates a text file named `SETUP.LOG` in the directory you specify for the Crystal Walls installation. This log file tells you exactly what files were copied to your hard disk, and where they were placed.

All of the Crystal Walls application files are grouped in a single directory. If you need to erase Crystal Walls completely from your hard disk, simply delete the Crystal Walls directory to remove all files associated with the program.

Crystal Walls also writes one line to the shared `WIN.INI` preferences file, in its own section labelled `[Crystal Walls]`.

**Q: How does Crystal Walls operation affect my portable computer's automatic power-saving features?**

A: Newer portable (notebook and subnotebook) computers include power-saving features that reduce power consumption by the hard disk, screen or processor when the system appears idle.

Some portable computers enter their power-saving state when the keyboard and mouse have been inactive for a set period of time. Crystal Walls will continue to run in the background.

Some other portable computers, with Advanced Power Management (APM), can request information directly from Windows to determine when the system is truly idle. Since Crystal Walls is always running, Windows may never report an idle system. On these computers, then, running Crystal Walls may interfere with the onset of power-saving features.

You should test your portable computer's power-saving features together with Crystal Walls. You may need to pause or close Crystal Walls while running your portable system on battery power.

**Q: I am running a screen saver module as a Crystal Walls world. Why does the background sometimes seem to redraw strangely when I move or resize an application window?**

A: Screen saver modules were not designed to run on a shared desktop or to be interrupted and redrawn repeatedly. You may see the following two related oddities when you run a screen saver module as a Crystal Walls world:

- Every time you move or resize an application window, you will see the entire background completely refresh and start over. Most screen saver modules restart very quickly. The few screen saver modules that have a considerable pause during initialization, though, may not be appropriate to use as a Crystal Walls world.
- Some screen saver modules intentionally do not black out the screen background before they begin to draw. When you run one of these screen saver modules as a Crystal Walls world, the desktop doesn't refresh or redraw when you move or resize an application window. You will see a "ghost" image of the window's previous size or position remain on the background. The screen saver module then restarts its action with this new background image (for instance, worms eating away at the background image). Depending on the screen saver module and your personal preference, this behavior may strike you as an amusing feature or a confusing drawback.

**Q: I selected "Intermission" as the Source in the Now Playing box in the Crystal Walls Lobby. Why aren't all of my Delrina screen saver modules listed in the choice of worlds?**

A: Currently Crystal Walls can run only a portion of the Delrina screen saver collections. The worlds listed in the Crystal Walls Lobby are the Delrina screen saver modules with filename extension `imx`.

***See also***

---

[Common questions and known problems](#)

[Hardware problems](#)

[Software problems](#)

[Corrections to the printed Guide](#)

[Troubleshooting](#)

[Compatibility with desktop utility programs](#)

[Error messages](#)

[Customer feedback](#)

# Hardware problems

## General problems with video display adapter cards

Video display adapter cards (video cards) come with special "display driver" software to make full use of their capabilities under Windows. (If you bought your computer as a complete system, the video card and display driver software were already installed and configured for you.) Some video card manufacturers introduce enhancements in their display driver software that are not fully compatible with all Windows applications. Because Crystal Walls is a multimedia-rich application, it may expose an incompatibility in the display driver software.

Problems you may encounter with some video cards include:

- excessively slow operation of Crystal Walls
- incorrect colors in some Crystal Walls worlds (though see [Color compatibility](#) for normal color concerns)
- system errors when entering certain worlds

To resolve these problems, try the following:

- Change the display driver's optional settings. Most display driver software includes a Control Panel-type Windows utility that allows you to change the display resolution and configure other display options. By changing the device-specific options offered for your video card, you may isolate and remove the incompatibility that causes Crystal Walls to falter. The specific option will vary from one video card to the next.
- Upgrade your display driver software. Often a video card manufacturer, in response to customer feedback, will revise its display driver software as problems become apparent. These revisions are usually provided free of charge to registered users who request them. Check with your video card maker, and upgrade your display driver software to the latest version.

**If you are unsure what kind of video display adapter card you are using, run the Windows Setup utility from the Accessories group in Program Manager.**

## ATI Graphics Ultra Mach 8 or Mach 32 video display adapter display cards

See "General problems with video display adapter cards," above, for an overview of compatibility problems with display driver software.

The latest display driver software for the ATI Mach 8 or Mach 32 series of video display adapter cards includes ATI-specific options that are not compatible with all Windows applications.

The problems you may encounter using Crystal Walls with this ATI display driver software include the following:

- You may be unable to enter several of the Crystal Walls worlds.
- While entering a Crystal Walls world, the ATI display driver software may cause a system error.
- After entering a world, the screen may redraw very slowly in all applications.
- Some of the Crystal Walls worlds may not display correctly. For instance, half of the dogs in *13 Sharpeis Contemplating the Universe* may appear blue.

The problem will always be apparent immediately upon entering a Crystal Walls world and will not first occur during normal operation of a Crystal Walls world.

To resolve any of these difficulties, try the following:

- If you have the Mach 8 display driver software, turn off the following ATI-specific option. Run the ATI Mach FlexDesk Control Panel by double-clicking its icon in the Program Manager. In the FlexDesk Control Panel, click **Advanced....** In the Advanced settings dialog box, make sure that the **Device Bitmaps** check box is set to off (unchecked). Click **OK** to close the Advanced settings dialog, and click **OK** to close the FlexDesk Control Panel. In the Exit dialog, click **Restart Windows** for your change to take effect.

- Ensure that you are using the most recent version of the ATI display driver software for your video display adapter card. Contact ATI to determine whether your version is current, and for free replacement software.

### **High-resolution color (32 or 64 thousand or 16 million colors) video display adapter cards**

The display driver software supplied by the manufacturer with some high-resolution color video display adapter cards (video cards) may not always be fully compatible with all Windows applications when you choose to view 32 thousand, 64 thousand or 16 million colors. (These color resolutions may also be referred to as 15, 16, or 24-bit color.) Graphically-intensive programs such as Crystal Walls or paint programs may display cosmetic problems while you are using these high-color resolutions.

In some cases, while viewing in high-color resolutions you may see bright "specks" around the animated characters in some of the Crystal Walls worlds. This is a cosmetic problem only, and will not interfere with program operation.

The problem can be resolved by changing to 256-color (8-bit) resolution. Display driver software for high-resolution color video cards usually include a Control Panel-type Windows utility that allows you to change the color resolution. Otherwise you can select a new color resolution in the Windows Setup utility (found in the Accessories group in Program Manager).

### **See also**

---

[Common questions and known problems](#)

[Common questions](#)

[Software problems](#)

[Corrections to the printed Guide](#)

[Customer feedback](#)

[Troubleshooting](#)

[Compatibility with desktop utility programs](#)

[Error messages](#)



## Software problems

### Problems using Crystal Walls with specific other applications

For general information concerning Crystal Walls compatibility with other software, see [Troubleshooting](#) and [Compatibility with desktop utility programs](#).

### Problems using Crystal Walls

#### Using your keyboard in the Crystal Walls Lobby

You may not always be able to access the scrolling Preview box or the controls for the optional settings in the Lobby by pressing **Tab** or using other keyboard commands alone. You can always use these features with a mouse.

#### Pausing the activity in a Crystal Walls world with screen savers or DOS windows

You can manually pause the activity in a world by maximizing any application or utility window. A few special applications, however, may not pause the active Crystal Walls world when they appear maximized.

Many screen saver utilities "blank" the screen without maximizing a window. Crystal Walls will continue to animate the current world behind such a screen saver. This will not interfere with the screen saver function.

Full-screen DOS windows also allow Crystal Walls to continue its normal activity. If you would like to pause Crystal Walls while using a full-screen DOS window, click the Pause button before switching to the DOS application.

For more information on pausing the activity in a world, see [Pausing the activity in a world](#).

#### Restarting a frozen Crystal Walls world

If the activity in a Crystal Walls world stops completely (which rarely happens), you can usually restart any activity in the world by passing the mouse cursor over the Crystal Walls icon.

### Problems with specific Crystal Walls Worlds

#### Squeaky Clean, Crystal Clear

Sometimes, after much activity, Bert may leave extra parts of himself or his cart behind at various places on the screen. To correct this visual problem maximize and restore an application, and Bert and his cart will redraw correctly. Or Bert can fix the problem himself when you next smudge the window. As Bert moves the cart or ropes past the stray parts, they will disappear.

Also, sometimes (less frequently) Bert gets confused and moves to a wrong location to squeegee your window. Fortunately, Bert's squeegee is able to clean the smudge correctly even from a distance.

#### See also

---

[Common questions and known problems](#)

[Common questions](#)

[Hardware problems](#)

[Corrections to the printed Guide](#)

[Error messages](#)

[Customer feedback](#)

## Corrections to the printed Guide

### Installing Crystal Walls

The cautionary instructions in the section **If the installation is very slow** are no longer necessary. On most machines a complete Crystal Walls installation should take about ten minutes. And the installation should never take more than 4-5 minutes per disk on any machine.

If your installation took longer, please contact technical support at the number listed in [Customer feedback](#).

### Using Crystal Walls with screen saver applications

With Crystal Walls, you can currently run Delrina's Intermission screen saver modules (for instance, Intermission or Opus 'n Bill) as Crystal Walls worlds. You cannot currently run After Dark modules as Crystal Walls worlds. But you can always run After Dark itself -- or any other screen saver -- at the same time as Crystal Walls.

For additional information about running screen saver modules as Crystal Walls worlds, see [Using Crystal Walls with screen saver applications](#) and [Common questions](#).

### See also

---

[Common questions and known problems](#)

[Customer feedback](#)

## Customer feedback

Be sure to register your copy of Crystal Walls!

Registered users receive free technical support -- as well as information on additional worlds as they become available, and advance notice and special discounts on new products. You can register by phone, mail, fax, or E-mail.

Use the contact information below to register your copy of Crystal Walls, to ask about site licenses, or to receive technical support. To register, you need the serial number that is printed on Disk 1 of your Crystal Walls disk set.

We're also very interested to hear which Crystal Walls worlds are your favorites, and any suggestions you have for making Crystal Walls even better.

**Domain Virtual Worlds, Inc.**  
**1202 East Pike Street, Suite 1400**  
**Seattle, WA 98122-3934**  
**USA**

Telephone:	206.328.7200
Fax:	206.328.7271
America Online:	DomainVWI
Internet:	DomainVWI@aol.com

### ***See also***

---

[Welcome](#)

[Common questions and known problems](#)

[Corrections to the printed Guide](#)

**Now Playing**

Choose the source program you want (for instance, Crystal Walls or Intermission), and then click a world to select it.

You can also double-click to select and enter a world with the existing options.

**Preview**

Read a description of the selected world here.

This scrolling box also contains a description of any characters who populate the world, their actions, and the reactions of the characters to your actions.

**World settings**

Choose optional settings from this scrolling box for the world you've selected.

Settings can include the number of characters in the world, the speed at which they perform tasks, and so on.

**Enter**

Click to enter the selected world.

**Options**

Click here to display the [Crystal Walls Options dialog box](#).



**Exit**

[Click here](#) to close the Lobby and exit Crystal Walls.

**Pattern**

Choose "None" from the available Pattern options.

**Wallpaper**

Choose "None" from the available Wallpaper options.

**Color**

Select the number of colors to use when displaying worlds.

**Sound**

Select when Crystal Walls makes sounds

**System activity**

Check a system activity option to display it.

**Cancel**

Click here to close this dialog box without changes.

**Remove...**

Click here to display the [Remove world dialog box](#).



**Remove world**

Choose a world to remove.

**OK**

Click here to remove the selected world.

**Help**

[Click here for help about this dialog box.](#)

**System activity gauge**

Monitor the activity of your computer's processor with the System activity gauge.

**Pause button**

Click here to pause the activity in a world.

**OK**

Click here to accept the selected options and close the dialog box.



