



Contents of Disk Factory Help

To learn how to use Help, press F1.

What is Disk Factory?

Using Disk Factory

Legal Information

Technical Support and Customer Service

How Do I Order The Registered Version?



What is Disk Factory?

Disk Factory is a high-speed, multitasking diskette copy/compare/format utility for Microsoft Windows. With **Disk Factory**, the once tedious task of diskette duplication is now a breeze!

▶ DUPE DISKETTES IN THE BACKGROUND - SEAMLESSLY

Why tie up your entire computer with diskette duplication chores? You can continue to use your system while **Disk Factory** works its magic! It's time to start spending more time USING your computer and less time waiting for it to complete simple tasks!

▶ JUST A SINGLE PASS TO READ OR WRITE

Multiple "swapping" of SOURCE and TARGET diskettes is NEVER a part of the **Disk Factory** process! One pass is all we need to capture a binary image of then used to make as many copies of your original as needed, one pass per diskette. It's quick and easy!

▶ REVOLUTIONARY COACTIVE PROMPT TECHNOLOGY

Using **Disk Factory** to copy diskettes in the background is painless thanks to our Coactive Prompt system! You can respond to important messages from **Disk Factory** with just a few mouse clicks, and without ever leaving your current application! The Coactive Prompt system helps make **Disk Factory** one of the most unobtrusive utilities ever developed!

▶ X-FORMAT: FULLY AUTOMATIC CROSS-FORMAT DUPLICATION

Our cross-format duplication feature, or X-Format for short, allows you to copy any diskette to any other diskette of like or greater capacity. This feature is perfect for those who distribute the same files in various diskette formats. X-Format is completely automatic and requires no user intervention. Need to copy a 360K diskette to a 720K diskette? Or a 720K diskette to a 1.44MB diskette? It's a snap. Just insert your diskette and go. **Disk Factory** takes care of the rest.

▶ STORE DISKETTES AS "IMAGE FILES" ON YOUR HARD DISK

Copy frequently duplicated diskettes to image files stored on your hard disk, for convenient access and faster duplication! No more waiting for the first "read" pass from a master diskette... **Disk Factory** can access an image file and begin duplication almost instantly!

▶ BUILT-IN MINI FILE MANAGER

Unsure of whether a particular diskette is actually empty, or whether another is actually the diskette you want to copy? You can view diskette contents, run programs, and inspect associated files without ever leaving **Disk Factory**.

▶ SUPPORT FOR NON-STANDARD DISKETTES

Unlike our competition, **Disk Factory** can copy many non-DOS formats, including Macintosh 1.44MB and Atari ST diskettes.

▶ INCREDIBLE EASE OF USE

Using **Disk Factory** is almost entirely self-explanatory! Just about everything you need is presented in a single, user-friendly window, including step-by-step instructions, helpful status messages, and truly informative displays!

▶ BACKGROUND COMPARES AND FORMATS, TOO!

▶ TRY BEFORE YOU BUY!

Disk Factory is distributed as shareware, the software distribution method that allows you to "try before you buy." You may use **Disk Factory** without cost for a thirty day evaluation period. After that period has expired, you can either register (and receive many registration benefits) or remove the program from your system without further obligation. For more information, see the [Registration Information](#) section of this file!

▶ AND SO MUCH MORE!



Using Disk Factory

The basics:

[Copying a Diskette](#)

[Comparing a Diskette](#)

[Formatting a Diskette](#)

[Using Image Files](#)

[Using the Coactive Prompt](#)

[Viewing Diskette Directories](#)

Other important stuff:

[Menu Items](#)

[Operation Box](#)

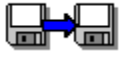
[Diskette Parameters Box](#)

[Progress Report Box](#)

[Copying Non-Standard Diskettes](#)

[X-Format: Cross-Format Duplication](#)

[Red Warning Symbols](#)



Copying a Diskette

Disk Factory will create, in a single pass, a temporary, binary image of an entire SOURCE diskette. This image, stored either in RAM or a temporary hard disk file, is then used to produce exact copies of the original, with a single pass per TARGET diskette.

To make a single copy of a diskette...

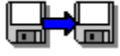
- 1) Make sure that the "Copy" radio button is selected in the Operation Box.
- 2) Select the appropriate SOURCE and TARGET drives in the Operation Box.
- 3) Insert the SOURCE diskette in the appropriate drive and choose the "OK" button.
- 4) When prompted, insert the TARGET diskette in the appropriate drive and choose the "OK" button.

See also:

Copying Non-Standard Diskettes

X-Format: Cross-Format Duplication

Multiple Copies of a Diskette



Multiple Copies

To make multiple copies of a diskette...

- 1) Make sure that the "Multiple Copies" radio button is selected in the Operation Box.
- 2) Select the appropriate SOURCE and TARGET drives in the Operation Box.
- 3) Insert the SOURCE diskette in the appropriate drive and choose the "OK" button.
- 4) When prompted, insert the TARGET diskette in the appropriate drive and choose the "OK" button.
- 5) Go back to step 5 until you decide to stop. At that point, choose the "Cancel" button.

See also:

Copying Non-Standard Diskettes

X-Format: Cross-Format Duplication



Operation Box

The operation to be performed (copying, comparing, or multiple copies) and diskette drive(s) to be used are selected using the controls in the Operation Box.

Operation	Source	[to]	Target
<input checked="" type="radio"/> Copy	A:	↓	A: ↓
<input type="radio"/> Compare			
<input type="radio"/> Multiple Copies			

Note: After processing begins, some controls in this box will be disabled and grayed until the process is completed or canceled.

Copy / Compare / Multiple Copies Radio Buttons

The state of this control determines the program operation to be performed - copy, compare, or multiple copies.

SOURCE Drive Select

This control lists all available diskette drives and the "img" option for Image Files.

TARGET Drive Select

This control lists all diskette drives that accept the same media type as the selected SOURCE drive, as well as the "img" option for Image Files.



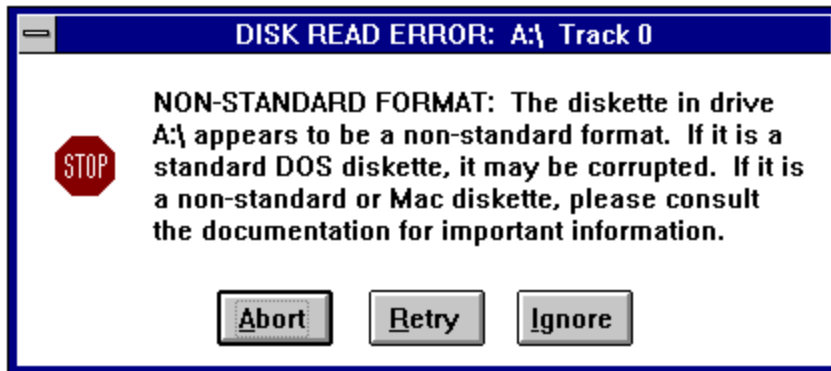
Copying Non-Standard Diskettes

Disk Factory was designed to copy standard DOS diskettes -- diskettes that were formatted on a PC according to DOS standards. However, because it uses a "binary" copy procedure, **Disk Factory** can also be used to copy many non-standard formats.

Disk Factory has been successfully tested with many diskette formats including Macintosh 1.44MB, Atari ST, and several types of non-bootable Unix diskettes. Macintosh 800K diskettes and some bootable Unix diskettes are not supported. Other types may or may not work properly. (If you come across a diskette that **Disk Factory** will not copy please let us know. A future version of **Disk Factory** will have more direct support for non-standard diskettes.)

***** WARNING ***** Before relying on **Disk Factory** for duplicating any non-standard diskette, be sure to make a test run. Copy the diskette and then carefully check it on the native machine to ensure that the diskette has copied properly.

When you attempt to copy a readable but non-standard diskette, this message will appear:



Choose "Ignore" to ignore this warning and attempt the copy. To prevent this warning from appearing in the future, check "Use Non-DOS Diskettes" from the "Options" menu.

The Coactive Prompt

Many Windows applications rely on the "Message Box" when the need arises to warn or get some type of input from the user. Applications designed to continue performing a task after losing "input focus" must suspend the current application in order to get your attention.

Though this has been an accepted practice, many users find it distracting and annoying. And unbeknownst to most, this technique of borrowing focus without asking can have unpredictable -- and sometimes detrimental -- consequences, especially when the system is heavily tasked.

Mind if I cut-in?

In answer to this dilemma, we've developed the Coactive Prompt. It has two modes -- "dancing" and "flashing." (It isn't really much of a dancer yet -- the only step it's learned so far is kind of a simplified freestyle two-step -- but we think it will catch on.) When it cuts-in, the Coactive Prompt is displayed on top of other applications (even the active application) but does NOT take focus away!

The Coactive Prompt doesn't like to impose, so every dance is users' choice. You can switch to the application seeking attention, issue a short-cut response, or ignore the application altogether and tell the Coactive Prompt to go away. (Unlike human dance partners, it handles rejection well.)

How do I use it?

The three Coactive Prompts look like this:



The first is requesting that you insert the SOURCE diskette, the second is requesting that you insert the TARGET diskette, and the third is informing you that the current operation is complete.

It's intelligent, too.

You can communicate with the Coactive Prompt using your mouse, without ever leaving your current application. [Click here for a list of Coactive Prompt Mouse Commands.](#)

Simply move your mouse pointer over the Coactive Prompt and it will enlarge to display the most common Mouse Commands:



User's Choice:

The Coactive Prompt is an option. You can turn it off by checking the "None" checkable menu item from the "Coactive Prompt Options" sub-menu from the "Options" menu.

Coactive Prompt Mouse Commands

You can communicate with **Disk Factory** via the Coactive Prompt. When the prompt appears, move your mouse pointer over the prompt (you will notice that the arrow changes to a diskette design and the prompt enlarges to display some of the short-cuts below). Then use one of the following commands...

Double-click Right Button Equivalent to choosing the "OK" button to start an operation.

Double-click Left Button Return to the **Disk Factory** window.

Hold down Right Button and Click Left Button Exit **Disk Factory**.

Double-click Middle Button, or Hold down Shift key and Double-click Left Button For use when the "Done" prompt is displayed; to begin another copy or compare operation.



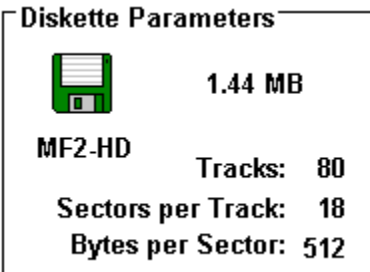
Comparing a Diskette

Disk Factory's compare facility will compare two diskettes to determine if their contents are the same. The terminology used is still "SOURCE" (for the first diskette) and "TARGET" (for the second), although nothing is actually copied. Neither diskette will be modified during this process.

A binary image of the SOURCE diskette is stored in RAM or a temporary hard disk file, and then each track is compared to those on the TARGET diskette. **Disk Factory** will notify you each time a mismatch is located, and you will have the opportunity to continue or cease comparing.

- 1) Make sure that the "Compare" radio button is selected in the Operation Box.
- 2) Select the appropriate SOURCE and TARGET drives in the Operation Box.
- 3) Insert the SOURCE diskette in the appropriate drive and choose the "OK" button.
- 4) When prompted, insert the TARGET diskette in the appropriate drive and choose the "OK" button.

Diskette Parameters Box



Technical information concerning the current diskette is displayed in the Diskette Parameters Box.

Size: The icon represents the physical size of the current diskette (5.25" or 3.5").

Type: The official designation for the current type of diskette is shown below the diskette icon. The type designation can be found on most diskette packaging and is a short-hand way of describing each type of diskette. Common designations are: MD2-DD (360KB diskette), MD2-HD (1.2MB diskette), MF2-DD (720KB diskette), and MF2-HD (1.44MB diskette).

Capacity: The storage capacity of the current diskette is shown to the right of the diskette icon. The capacity is calculated using the formula ((Sectors Per Track * Bytes Per Sector) * Tracks) * Sides, and is typically 360KB, 720KB, 1.2MB, or 1.44MB.

Tracks: Each side is divided into a defined number of concentric sections, called Tracks or Cylinders. High-density 5.25" and all standard 3.5" diskettes have 80 tracks, double-density 5.25" diskettes have 40 tracks. Tracks are numbered from 0 (for the outer-most Track) to 79 or 39 (i.e.: [number of Tracks - 1]).

Sectors Per Track: Each Track is divided into a defined number of sectors. Double-Density formats (360KB and 720KB) have 9 Sectors Per Track. The 1.2MB and 1.44MB High-Density formats have 15 and 18 Sectors Per Track, respectively. Sectors are numbered from 1 to the [number of Sectors Per Track].

Bytes Per Sector: Each Sector is designed to store a specific amount of data, usually 512 bytes. The number of Bytes Per Sector is always a power of 2.

Legal Information

DISK FACTORY is distributed via the shareware distribution method. Users are granted a license to use this software for evaluation purposes for a period not to exceed thirty days. After this period, users must either register (purchase a license for continued use and other benefits) or cease using the software and remove all copies from their system. More information on registration can be found in the Registration Information section of this file.

SHAREWARE LICENSE AGREEMENT

This is an agreement between you (either an individual or an entity) and Accurate Technologies By using or distributing copies of the shareware evaluation version of the DISK FACTORY package in any way, you are agreeing to be bound by the terms of this agreement. If you do not agree to the terms of this agreement, you must cease using or distributing this software immediately.

1) COPYRIGHT: DISK FACTORY is Copyright c 1992-1994 by Accurate Technologies and is protected by United States copyright laws and international treaty provisions. Accurate Technologies, the copyright holder, has and reserves the exclusive copyright and other right, title, and interest to copy and distribute this software, and the right to use the Trademark "DISK FACTORY" in connection with it.

2) LICENSE TO USE: You may use the shareware evaluation version of DISK FACTORY for a period not to exceed thirty (30) days. If you wish to use it beyond this period, you must register by making the necessary payment to Accurate Technologies as outlined elsewhere in this package.

3) NON-COMMERCIAL DISTRIBUTION: You are granted a license to copy and distribute the shareware evaluation version of DISK FACTORY in a non-commercial manner. Distribution is non-commercial if it is for free, or by any not-for-profit organization, or by hobby, user or computer interest group to its members, or by any BBS, provided the DISK FACTORY package is not modified or abridged in any way. Accurate Technologies reserves the right to revoke this license at any time for any reason on 90 days advance written notice. Commercial distributors should read the "VENDOR.DOC" file included elsewhere in this package.

4) THIS PACKAGE (CONSISTING OF THE DISK FACTORY SOFTWARE AND ASSOCIATED FILES AND DOCUMENTATION) IS PROVIDED "AS IS" WITHOUT REPRESENTATION OR WARRANTY OF ANY KIND, EITHER EXPRESSED OR IMPLIED, INCLUDING WITHOUT LIMITATION, ANY REPRESENTATIONS OR ENDORSEMENTS REGARDING THE USE OF, THE RESULTS OF, OR PERFORMANCE OF; ITS APPROPRIATENESS, ACCURACY, RELIABILITY, OR CURRENTNESS. THE ENTIRE RISK AS TO THE USE OF THIS PACKAGE IS ASSUMED BY THE USER. IN NO EVENT WILL ACCURATE TECHNOLOGIES OR ITS SUPPLIERS BE LIABLE FOR ANY DAMAGES, DIRECT, INDIRECT, INCIDENTAL, OR CONSEQUENTIAL, RESULTING FROM ANY DEFECT IN THE PACKAGE, EVEN IF ACCURATE TECHNOLOGIES OR ITS SUPPLIERS HAVE BEEN ADVISED OF THE POSSIBILITY OF SUCH DAMAGES. ANY AND ALL USE OF THIS PACKAGE, FOR ANY PURPOSE, WITH NO REGARD TO THE LEGALITY OF SUCH USE OR PURPOSE, IS THE COMPLETE AND SOLE RESPONSIBILITY OF THE USER. Some states do not allow disclaimers of implied warranties or the exclusion of consequential damages, so the above disclaimers and exclusions may not apply to you.

5) GOVERNING LAW: This agreement is governed by the laws of the State of California. Should any part or parts of this agreement be deemed unlawful, the remainder shall continue to apply.

NOTE: The registration package sent to registered users includes a software license agreement. This agreement is similar to the "shrink wrap" agreements found in most software packages distributed through retail channels. Registered users will have the option of returning the package for a full refund if they do not agree to the terms of that agreement.

Copyright c 1992-1994 Accurate Technologies. **Disk Factory** and Coactive Prompt are trademarks of Accurate Technologies. All other trademarks mentioned are the property of their respective companies.

ALL TERMS ARE SUBJECT TO CHANGE WITHOUT NOTICE.

PUBLISHED AS SHAREWARE AND REPRESENTED WORLD-WIDE EXCLUSIVELY BY ACCURATE TECHNOLOGIES.

Technical Support and Customer Service

Accurate Technologies is dedicated to the complete and total satisfaction of our customers. If you have any questions about or problems with this software, you are encouraged to contact us. We will do our absolute best to help you. We can be reached through the following channels...

Telephone: (619) 675-1525

Mail:

Accurate Technologies,
P.O. Box 4943
San Diego, CA 92164-4943 USA

CompuServe:	70711,527
America Online:	MarkMcGin
InterNet #1:	70711,527@compuserve.com
InterNet #2:	MarkMcGin@aol.com

X-Format

X-Format, shorthand for our cross-format diskette duplication feature, allows you to copy any diskette to any other diskette of like or greater capacity. X-Format is completely automatic and requires no user intervention.

The TARGET diskette will be formatted to the capacity of the SOURCE. For example, a 360K diskette copied to a 720K diskette will produce a 720K diskette formatted out to 360K.

360K diskettes can be copied to 360K, 720K, 1.2MB, and 1.44MB diskettes.

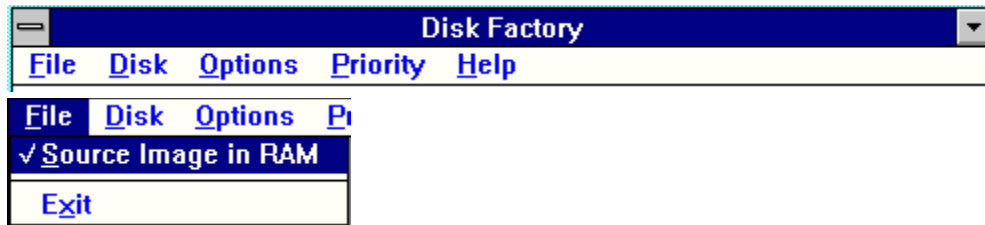
720K diskettes can be copied to 720K, 1.2MB, and 1.44MB diskettes.

1.2MB diskettes can be copied to 1.2MB and 1.44MB diskettes.

1.44MB diskettes can be copied to 1.44MB diskettes.

(**Disk Factory** does not currently support 2.88MB diskettes.)

Menu Items



Source Image in RAM menu item

Checkable menu item. When checked, **Disk Factory** will attempt to store a binary image of the SOURCE diskette in memory. If this item is not checked, or available RAM is insufficient, the binary image will be stored in a temporary hard disk file.

Exit menu item

Quits **Disk Factory**



View Directory... menu item

Displays the "Diskette Directory View" dialog box, used to view the contents of a diskette.

Format Diskette... menu item

Displays the "Format Diskette" dialog box, used to format individual diskettes.



Read After Write Verify menu item

Checkable menu item. When checked, the TARGET diskette will be read after it is written and compared byte-for-byte to the binary image of the SOURCE diskette. This extra step will help ensure that your diskette has been duplicated correctly.

Always Format Target menu item

Checkable menu item. When checked, the TARGET diskette will be formatted before it is written to, regardless of whether or not it has been previously formatted.

Use Non-DOS Diskettes menu item

Checkable menu item. When checked, the warning message for non-standard diskettes will be disabled. See [Copying Non-Standard Diskettes](#) for more information.

Dialog Interface Options menu item

This menu leads to a sub-menu.

Coactive Prompt Options menu item

This menu leads to a sub-menu.



High menu item

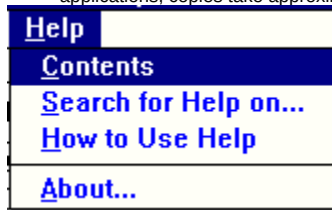
Checkable menu item. When checked, **Disk Factory** operates at high priority. At this priority, copies are completed in roughly the same time required by non-multitasking copy utilities. Effective multitasking is possible on most systems at this priority.

Medium menu item

Checkable menu item. When checked, **Disk Factory** operates at medium priority. Because more processing time is available for other applications, copies take approximately 50% longer to complete at medium priority than at high priority.

Low menu item

Checkable menu item. When checked, **Disk Factory** operates at low priority. Because more processing time is available for other applications, copies take approximately twice as long to complete at low priority than at high priority.



Contents menu item

Displays this Windows Help file.

Search for Help on... menu item

Search for help on a certain topic in this Windows Help file.

How to Use Help menu item

Displays the "How to Use Help" help file from Microsoft.

About... menu item

Displays the "About" dialog box, which displays the current version number of **Disk Factory** and other important information.



Red Warning Symbols

Before **Disk Factory** performs any diskette operation that will destroy any previously existing data, red warning symbols will be displayed. The main program icon and the icon in the Diskette Parameters Box are shown in red to indicate the risk of potential data loss associated with the following operation. The Coactive Prompt is displayed with a red background as well, indicating that **Disk Factory** expects the TARGET diskette to be in the selected drive.

WARNING: Any existing data on the TARGET diskette will be destroyed as it is over-written. Clicking 'OK' or using the Coactive Prompt while a Red Warning Icon is displayed verifies your intent to over-write the TARGET diskette.

Use appropriate caution at any time a Warning Symbol is displayed.





Formatting a Diskette

Disk Factory will automatically format new diskettes (or all diskettes if you wish) when making copies. It is also capable of just formatting diskettes, as explained below...

- 1) Choose "Format Diskette" from the "Disk" menu. The "Format Diskette" dialog box will appear.
- 2) Choose which drive to format, high or low density, and other options.
- 3) Insert the diskette to be formatted.
- 4) Choose the "Format" button. Remember: Any and all data on the diskette will be lost.



Using Image Files

Diskettes can be stored as image files on your hard disk, for convenient access to your most frequently duplicated diskettes. **Disk Factory's** drive selectors list an extra, dummy drive named "img." Selecting this "img" drive leads to dialogs which allow you to specify the name of the .IMG file to be read or written. Except for this extra step, using an Image File as either the SOURCE or TARGET diskette is essentially the same as using real diskettes.

Copying a diskette to an Image File...

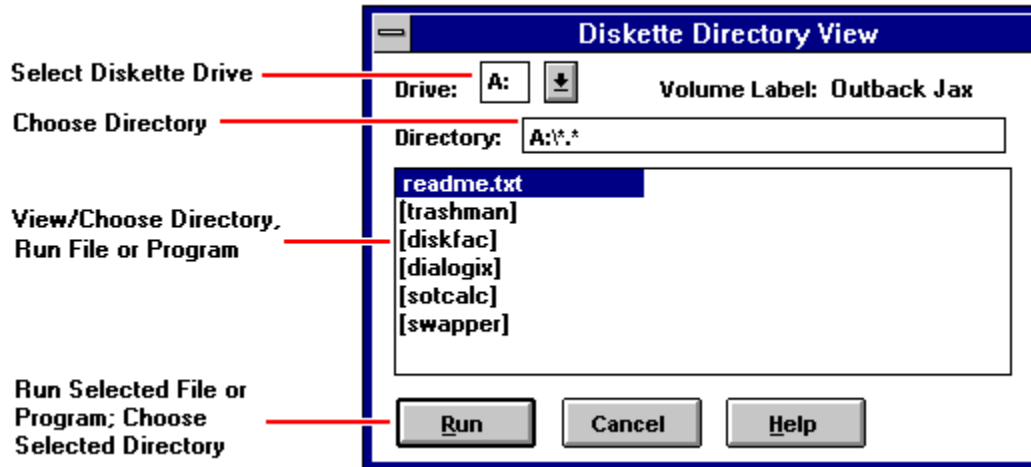
- 1) Make sure that the "Copy" radio button is selected in the Operation Box.
- 2) Select the appropriate SOURCE drive in the Operation Box.
- 3) Select "Img" from the list of TARGET drives in the Operation Box.
- 4) A "Save As" dialog box will appear. Enter a name for your Image File (with the .img extension) and choose the dialog's "OK" button.
- 5) Insert the SOURCE diskette in the appropriate drive and choose the "OK" button.

Duplicating diskettes from an Image File...

- 1) Make sure that either the "Copy" or "Multiple Copies" radio button is selected in the Operation Box.
- 2) Select "Img" from the list of SOURCE drives in the Operation Box.
- 3) An "Open" dialog box will appear. Select the appropriate Image File and choose the dialog's "OK" button.
- 4) Select the appropriate TARGET drive in the Operation Box.
- 5) Choose the "OK" button to read the Image File into memory.
- 6) When prompted, insert the TARGET diskette in the appropriate drive and choose the "OK" button.
- 7) If making multiple copies, go back to step 5 until you decide to stop. At that point, choose the "Cancel" button.

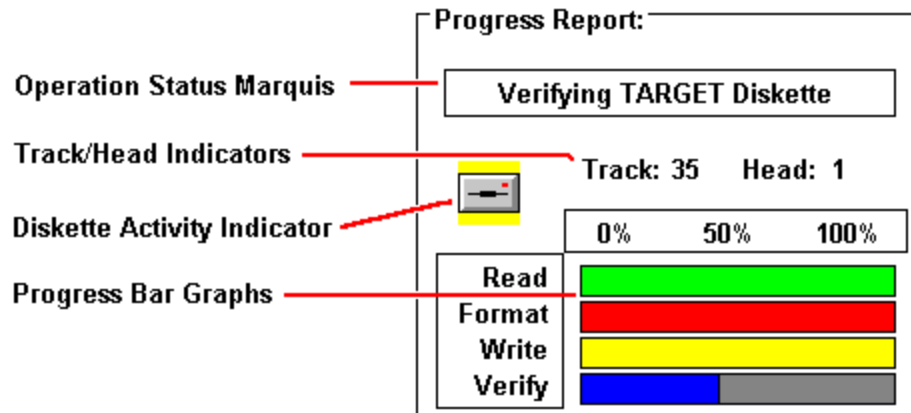
Viewing Diskette Directories

Disk Factory includes a facility for examining the current diskette. The "View Directory..." menu from the "Disk" menu presents a built-in, mini file manager. You can easily view any of the files or directories on the diskette, and run any program or associated file.





Progress Report Box



The Progress Report box consists of the following elements...

Operation Status Marquis

This marquis displays important messages. [Click here for a list.](#)

Track/Head Indicators

These numbers indicate the current physical location of the drive heads.

Diskette Activity Indicator

When the drive icon appears with a yellow background, the drive is currently in use.

Progress Bar Graphs

These graphs express progress in the read, format, write, and verification stages.

Operation Status Marquis Messages

Program Is Idle

The program is idle and awaiting your commands...

Initializing Diskette Drive

Displayed while establishing format type or setting drive parameters.

Reading SOURCE Diskette

Displayed while reading data from the diskette.

Ready For TARGET Diskette

Prompts user to insert the TARGET diskette into the selected drive.

Safety Checking TARGET

Displayed while comparing the first track of the proposed TARGET diskette against that of the SOURCE. If they are identical, a warning message is displayed.

Formatting TARGET Diskette

Displayed while formatting the TARGET diskette.

Testing Media

Before completely formatting, the program tests to make sure that the media is viable and of the correct density.

Writing TARGET Diskette

Displayed while transferring SOURCE data to the TARGET diskette.

Verifying TARGET Diskette

Displayed while verifying the TARGET diskette.

Diskette Copy/Compare Complete

Indicates that the copy or compare operation has completed.

Acknowledgments (in alphabetic order)

Dick Bryant

QA Adviser
Lender of Immoral Support
Intense Beta Tester

Joe Hazard

Interface consultant
Financial backer
Binary commando

Bonnie Little

Docs and Promo Adviser
Terminal Optimist
[sometimes] Painfully objective critic

Stephie & Becky McGinty

Patience teachers
Fun Consultants
Majorly cute kidlets

Jeff Mefford

Support BBS Sysop
Hitchhiker on the Information Highway

Robin Ragan

Technical Writer
Marketing Assistant
Programmer Groupie

Registration Information

About Shareware

The shareware distribution method is an innovative way to market - and obtain! - exciting new software like **Disk Factory**. Users like yourself are given the opportunity to test-drive software for free or a nominal disk charge, and independent software companies like Accurate Technologies, are offered the freedom to publish their software titles with minimal overhead. Low overhead helps keep prices down and spurs a brand of creativity and dedication found only in the shareware market.

Shareware distribution relies upon the support of those who use shareware programs: Please feel free to give copies of **Disk Factory** to your friends and colleagues. And if you use **Disk Factory** beyond the evaluation period, please register.

Why Register?

Users are granted a license to use this shareware evaluation version of **Disk Factory** for a thirty day evaluation period without cost. After this period, you must either register the program or remove it from your system. We certainly hope that you will find the program useful and register it!

As a registered user, you will receive...

- * * * A license for continued use of **Disk Factory**.
- * * * A printed manual.
- * * * A disk containing: the latest version of **Disk Factory**...
- * * * Unlimited free technical support and customer service.
- * * * Free updates to any and all future version 1.x releases.

Minimal disk and shipping charges may apply. Updates to subsequent major versions will be available to you at reduced cost.

Please register today and support the further development of **Disk Factory** and other shareware products. The shareware concept can only work with your support.

How much does it cost?

Only \$29.95! (U.S. Funds)

If ordering by mail or credit card from outside of the USA or Canada, there is a \$2.00 (U.S.) international shipping surcharge, making your total cost \$31.95 (U.S.). There is no international shipping surcharge for those who order via CompuServe.

If ordering by mail from within California, please add 7% state sales tax.

For ordering information, please click one of these topics:

[How To Register By Check \(Cheque\) Or Money Order](#)

[How To Register By Credit Card](#)

[How To Register Via CompuServe](#)

Interested in purchasing a site license for your company or organization?

Please call or write for details:

Registration By Credit Card

THE FOLLOWING NUMBERS ARE FOR ORDERS ONLY. THEY WILL CONNECT YOU WITH AN ORDER TAKING SERVICE, NOT ACCURATE TECHNOLOGIES. The operators are trained only to take orders, and cannot provide answers to any of your questions. If you have any questions whatsoever, including questions concerning the status of your order, please contact Accurate Technologies. directly. Call us at (619) 675-1525.

We are pleased to announce that our products are now available through Software Shopper. Their operators are standing by during normal business hours, eastern time.

Visa, MasterCard, and American Express are gladly accepted.

Within The United States Call Toll Free: **1-800-847-0309**

Outside Of The United States, Call: (502)-228-4492 (ask for the order taking dept.) Or, If You Prefer, Fax: (502)-228-5121 (send it to the attention of the order taking dept.) Thank you for your support! It is appreciated!

Software Shopper Disclaimer: Registration fees and technical support for registered programs are as stated in the author's documentation. Please contact the author for technical assistance with this software. Software Shopper assumes no technical or legal liability for software purchased through the order service.

Registration Via CompuServe

You can easily register Disk Factory, no matter where you live, if you are a member of the CompuServe Information Service. CompuServe now offers a special area dedicated to shareware registrations... Use it to register Disk Factory and \$29.95 in U.S. funds - or the current exchange value in your local currency - will be added to your next CompuServe bill. It's a quick and easy way to register all of our shareware packages.

And if you live outside of the United States or Canada, you SAVE! That's because we've waived the usual international shipping and handling surcharge for those who register via CompuServe.

How do you use it? Just **GO SWREG** and follow the instructions as they appear. The Registration ID number for this product is **2538**.

Make a note of it before calling.

Thank you for your support! It is appreciated!

Disk Factory -- Only \$29.95; To Register and receive the latest version

print and mail the form below:

ACCURATE TECHNOLOGIES

P.O. BOX 4943

SAN DIEGO, CA 92164-4943

(619) 675-1525

"SATISFACTION GUARANTEED",

Disk Factory Order Form

Name: _____

Address: _____

City, ST: _____

Zip Code: _____

Home Phone #:() - _____

Work Phone #:() - _____

QUANTITY:

_____ at \$29.95 on 3.5" 720 KB diskettes

_____ at \$29.95 on 5.25" 360 KB diskettes

(CA residents add 7.00 % sales tax)

Total Enclosed: \$ _____

☐ Check/Money Order

☐ Mastercard

☐ Visa

Name on credit card: _____

Credit card number: _____

exp. date: ____/____/____

