

KNOPPIX

ESC

KNOPPIX

KNOPPIX の

の

の

KNOPPIX の

KNOPPIX

(1)

の Klaus Knopper
bootable Linux

CD

<http://www.knopper.net/knoppix>

Debian GNU/Linux
OS

2002

Linux Conference (2002/9/18-20) の .org
village

<http://lc.linux.or.jp/lc2002/>

KNOPPIX

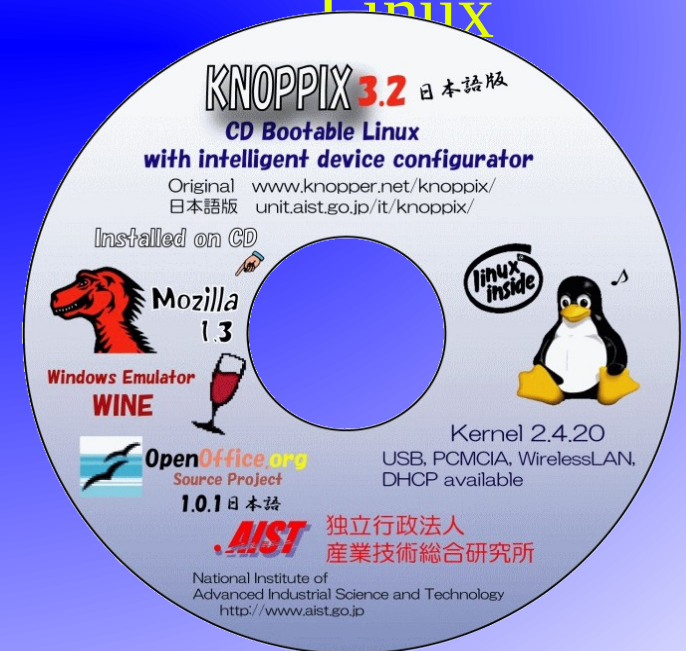
(2)

CD bootable Linux の

Linux

Windows

Linux



KNOPPIX

(3)

AutoConfig

の

の

DHCP

Windows

KNOPPIX

(4)

700M CD-ROM

CLOOP

1.8G

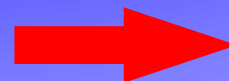
KDE

MS Office の OpenOffice.org

Outlook の Sylpheed

Mozilla

GIMP



Windows

WINE

KNOPPIX の

の

の

KNOPPIX のの (1)

CD-ROM

BIOS

の BIOS の CD

CD

の

BIOS の F2

KNOPPIX のの (2)

BIOS CD

①
KNOPPIX
VERSION 3.3



www.linuxtag.org

KNOPPERNET
Dipl.-Ing. Klaus Knopper

KNOPPIX U3.3 <http://www.knoppix.de/>
F2 for help.
boot: _



PC

KNOPPIX のの (3)

の F

```
>>> CHEATCODES FOR KNOPPIX V3.3 (hit F1 to get back to the main screen) <<<
```

The KNOPPIX autoconfiguration scripts accept the following kernel options (or combinations) at the boot prompt (see knoppix-cheatcodes.txt for more):

knoppix lang=us (cs da de es fr nl it pl ru sk ...)	Choose language/keyboard
knoppix desktop=icewm!fluxbox!kde!wmaker!twm!xfce	Change desktop manager
knoppix screen=1280x1024	Use specified screen resolution for X
knoppix xserver=XFree86 xmodule=fbdev	Use specified X-Server (and module)
fb1280x1024 : fb1024x768 : fb800x600	Framebuffer mode (for notebooks)
knoppix dma	Turn on DMA accel. for all drives
knoppix vsync=85 hsync=78	Use 60Hz vert. / 78kHz horiz. refresh
knoppix 2	Runlevel 2, Textmode only
knoppix config=/dev/sda1 home=/dev/sda1	Load previously saved config/homedir
knoppix no{scsi!pcmcia!usb!agp!swap!apm!apic!mce!ddc}	Disable HW-detection
knoppix blind brltty=type,port,tbl	Blind mode w. Braille-Terminal(type)
failsafe	(Almost) no hardware-detection
expert	Interactive startup/setup

Caution: The default boot image boots with german keyboard layout. The '=' letter is located at Shift-0 on this keyboard (you may want to use lang=us).

boot: _ ←

knoppix screen=1024x768 nopcmcia

KNOPPIX のの (4)

の

```
PCI: Cannot allocate resource region 4 of device 00:07.1
```

```
Welcome to the KNOPPIX live Linux-on-CD!
```

```
Accessing KNOPPIX CDROM at /dev/scd0...
```

```
Total memory found: 256572 kB
```

```
Creating /ramdisk (dynamic size=201520k) on /dev/shm...Done.
```

```
Creating directories and symlinks on ramdisk...Done.
```

```
Starting init process.
```

```
INIT: version 2.78-knoppix booting
```

```
Processor 0 is Pentium III (Coppermine) 796MHz, 256 KB Cache
```

```
APM Bios found, power management functions enabled.
```

```
USB found, managed by hotplug.
```

```
Enabling hotplug manager.
```

```
Autoconfiguring devices... Done.
```

```
Mouse is Generic 3 Button Mouse (PS/2) at /dev/psaux
```

```
Video is VMWare Inc:Virtual SUGA, using XFree86(vmware) Server
```

```
Monitor is Generic Monitor, H:28.0-96.0kHz, V:50.0-76.0Hz
```

```
Using Modes "1024x768" "800x600" "640x480"
```

```
Scanning for Harddisk partitions and creating /etc/fstab... Done.
```

```
Using swap partition /dev/hda2.
```

```
Network device eth0 detected, DHCP broadcasting for IP. (Backgrounding)
```

```
Automounter started for: floppy cdrom.
```

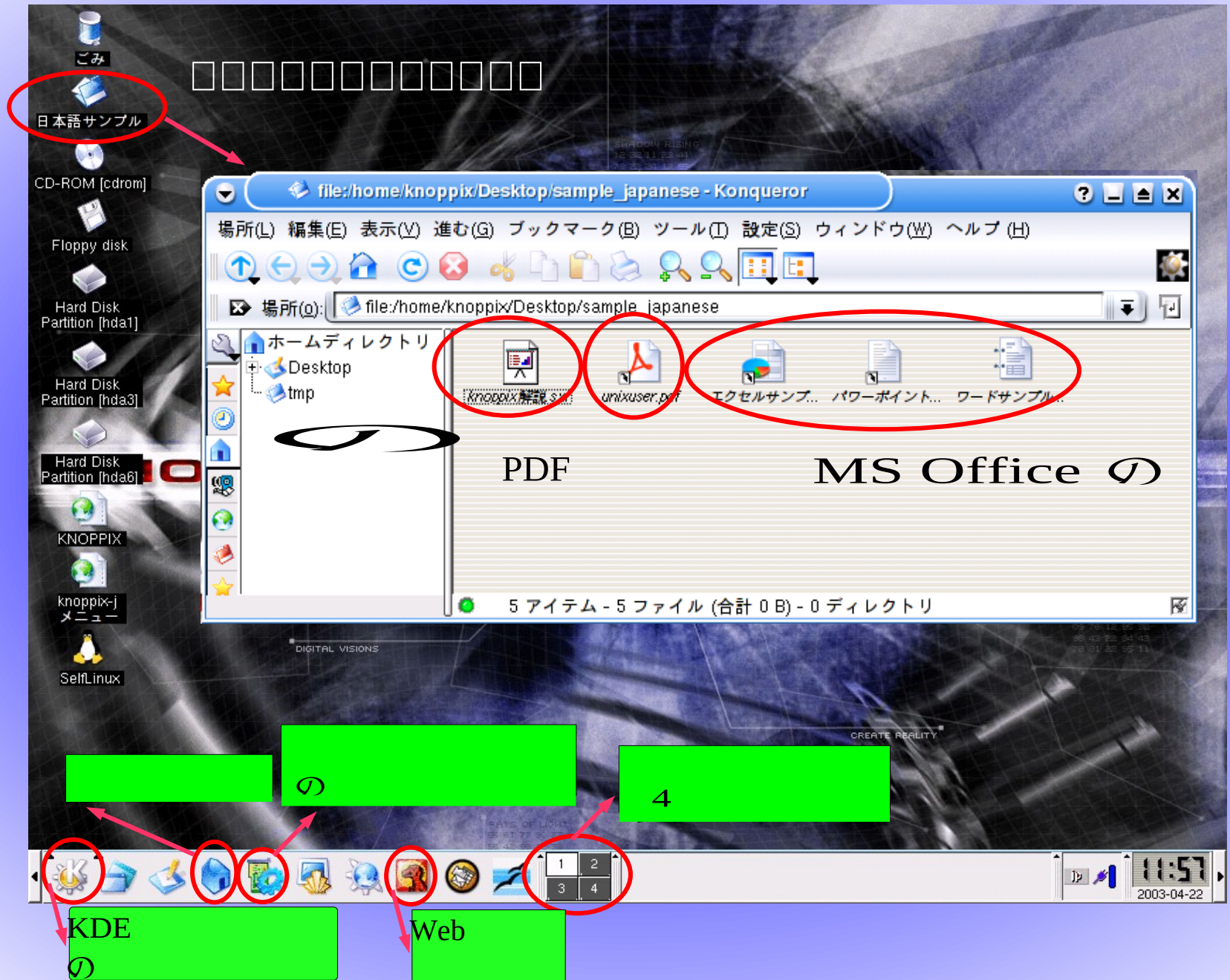
KNOPPIX の (5) の

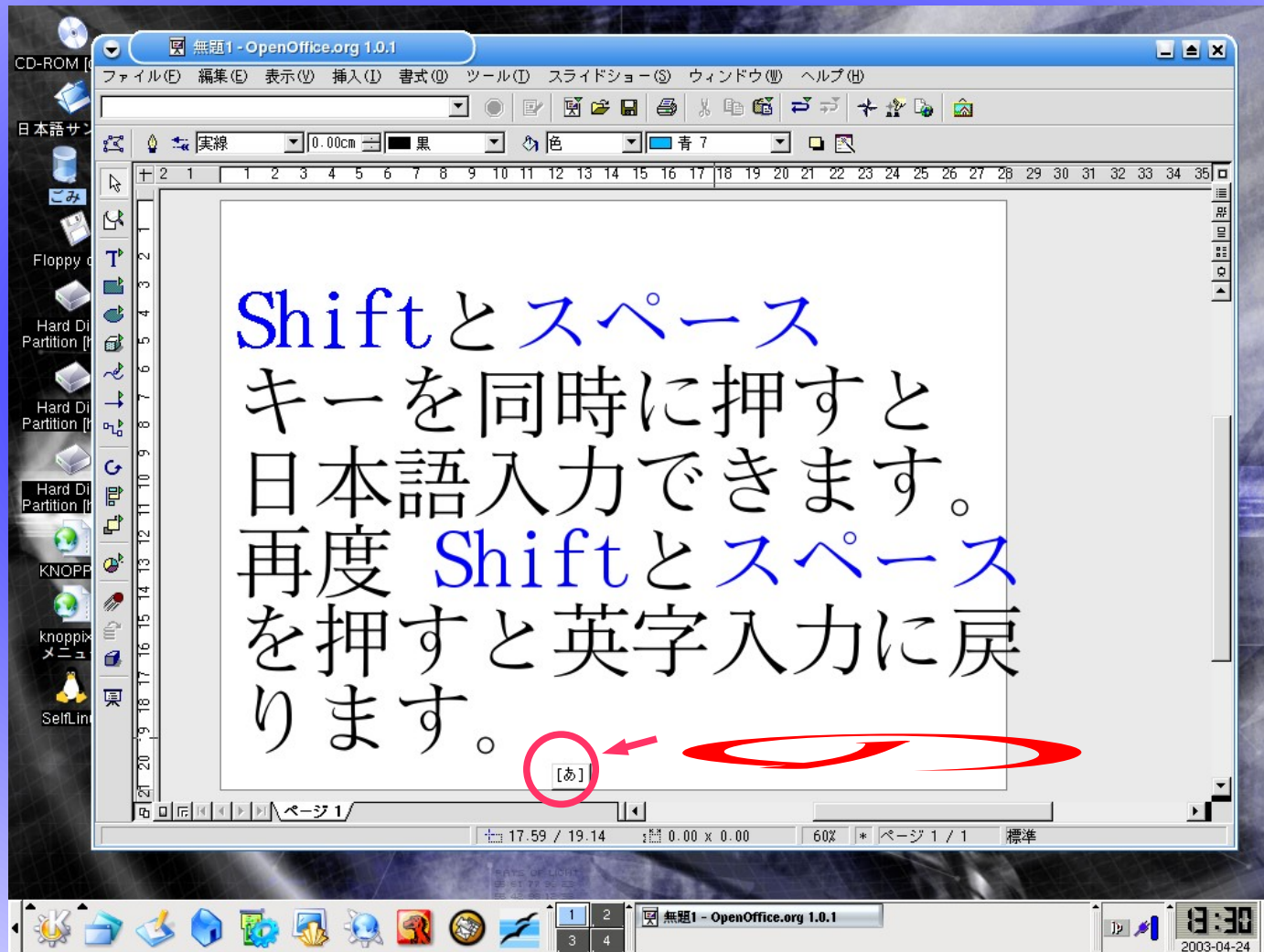
KNOPPIX

KNOPPIX の

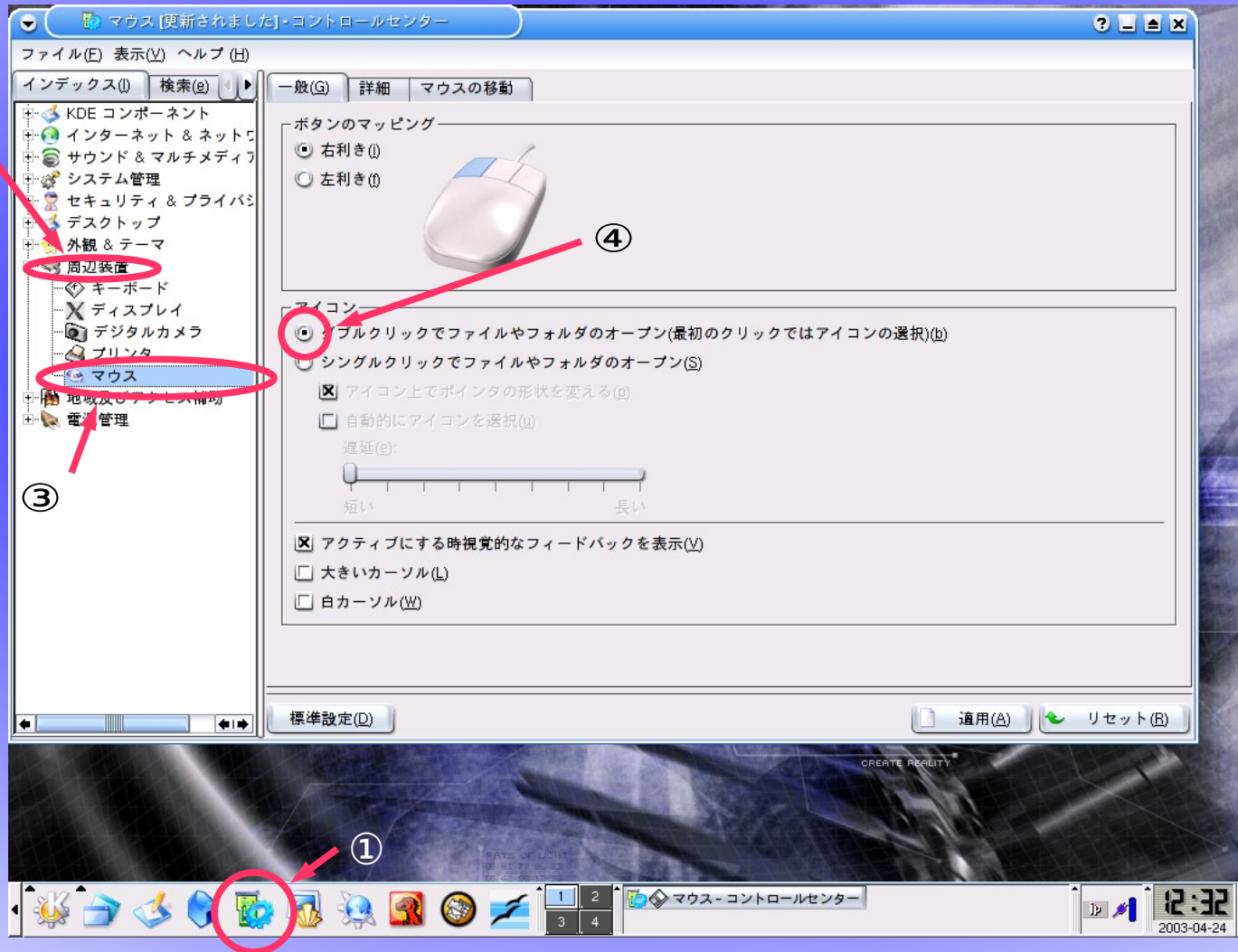
の

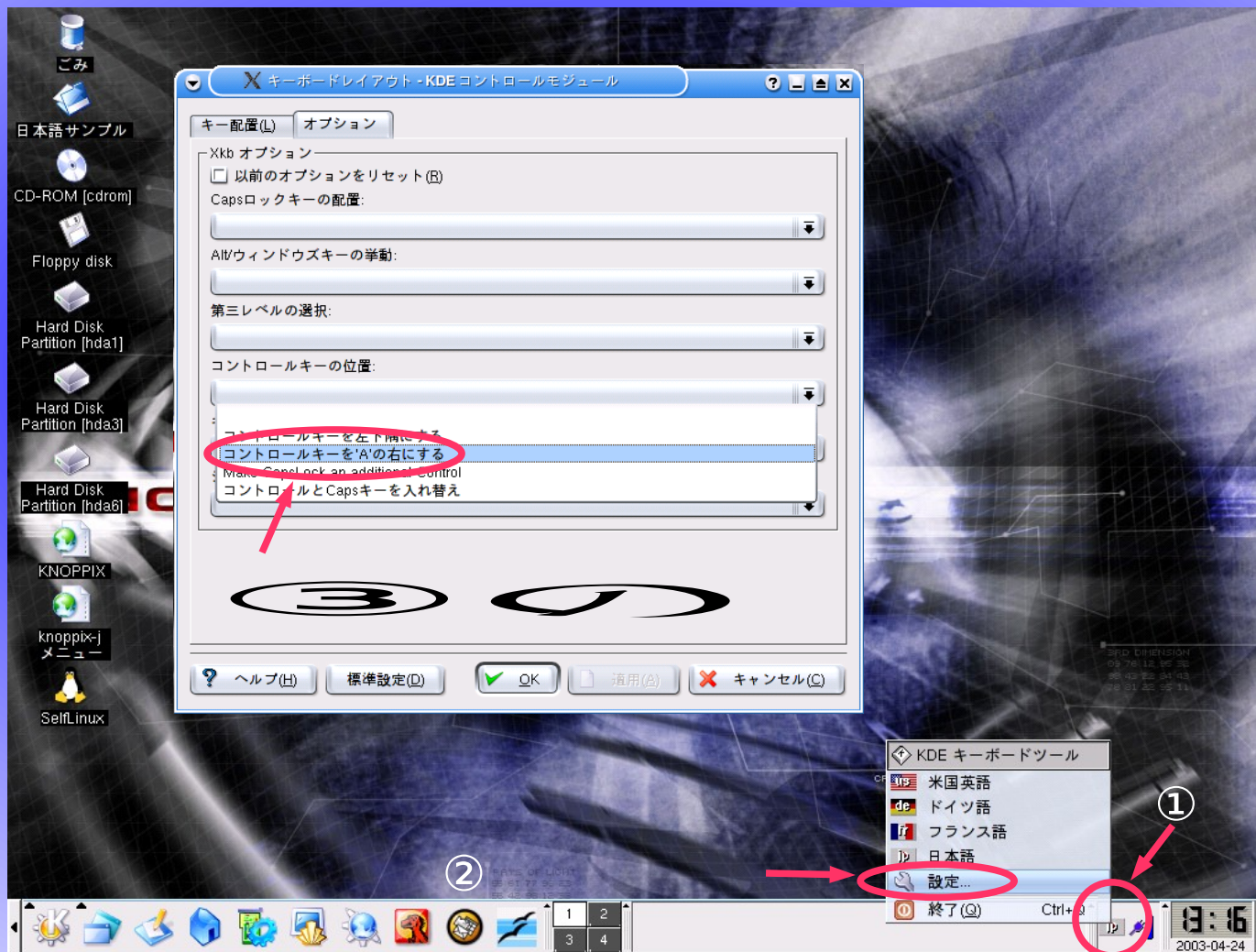
の





②

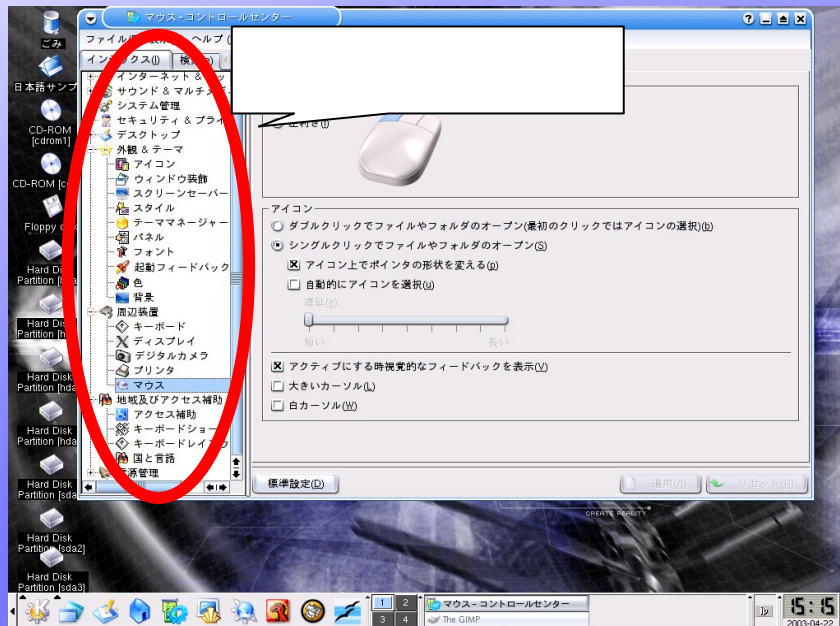




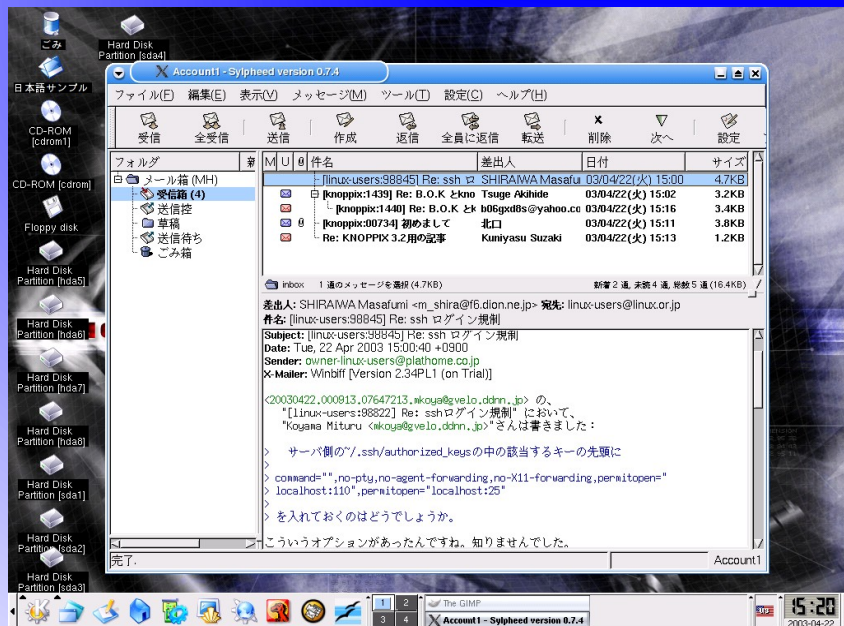
KNOPPIX の

の

の



GUI



Sylpheed

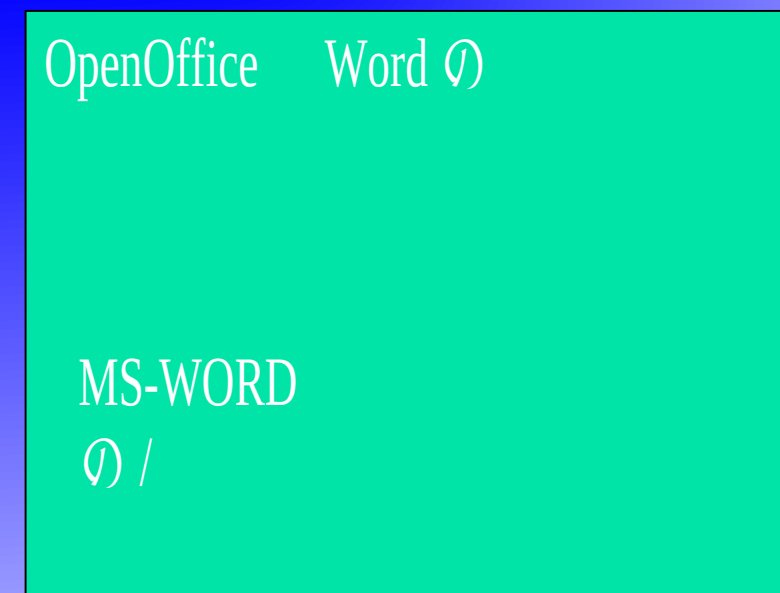
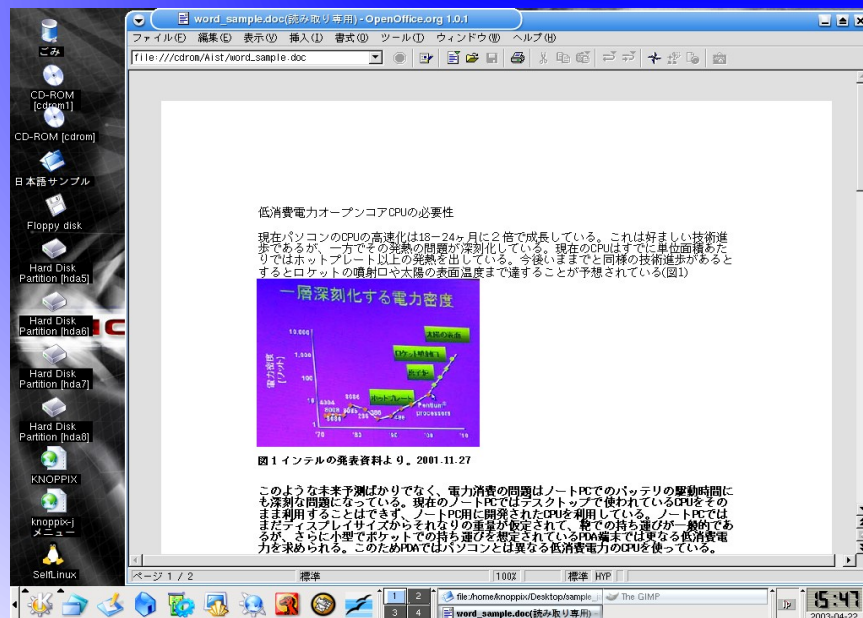
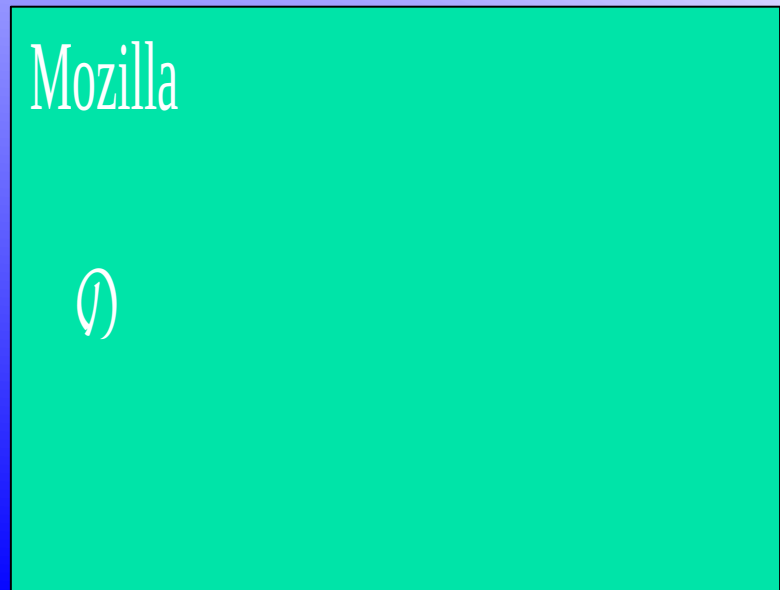
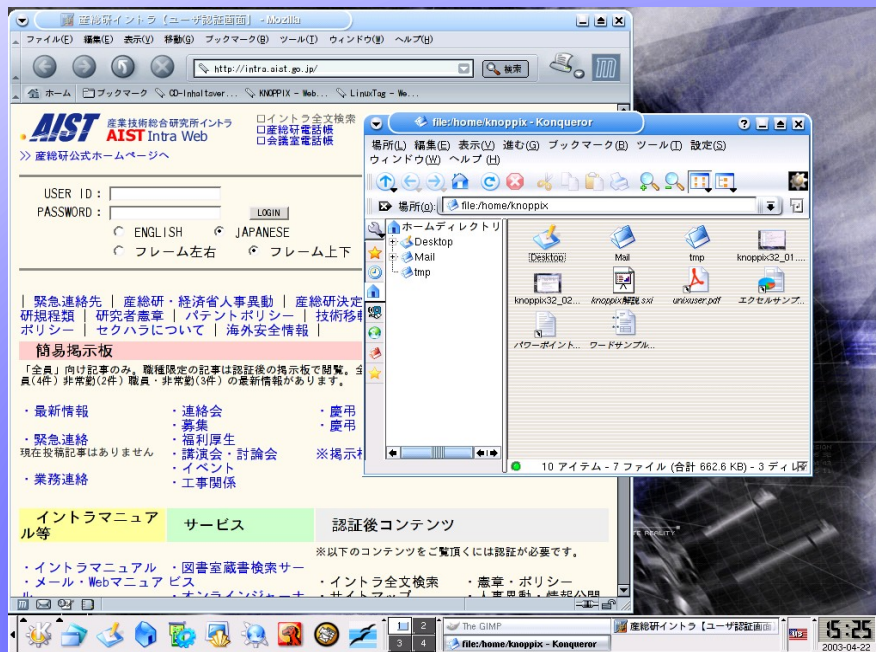
Outlook

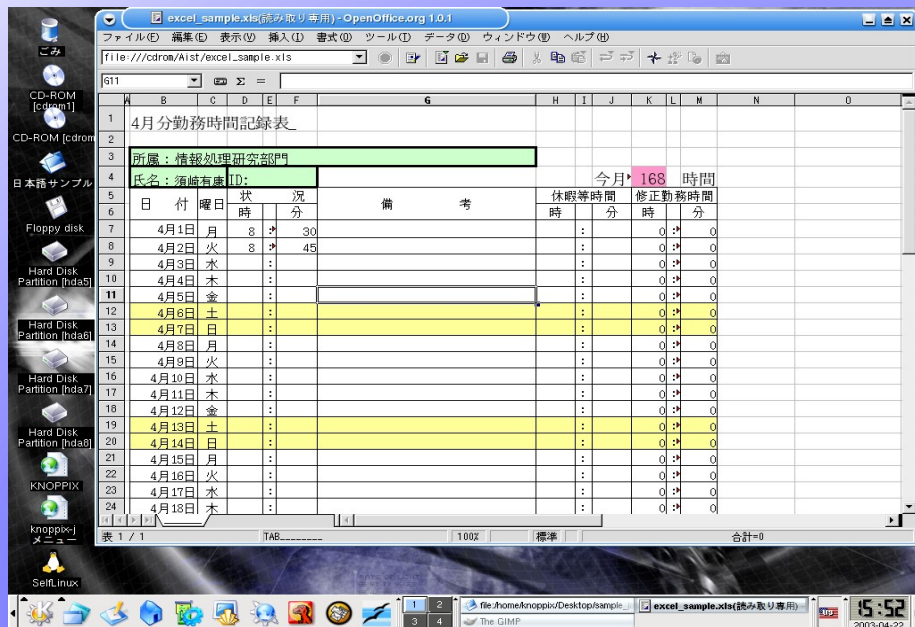
SSL の

Express の Viewer

OpenOffice



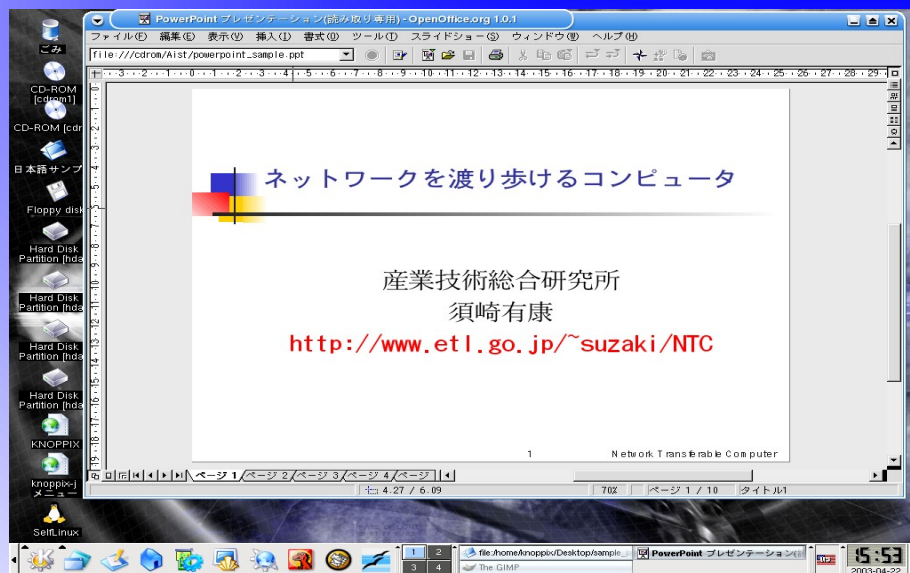




OpenOffice Excel の

Excel

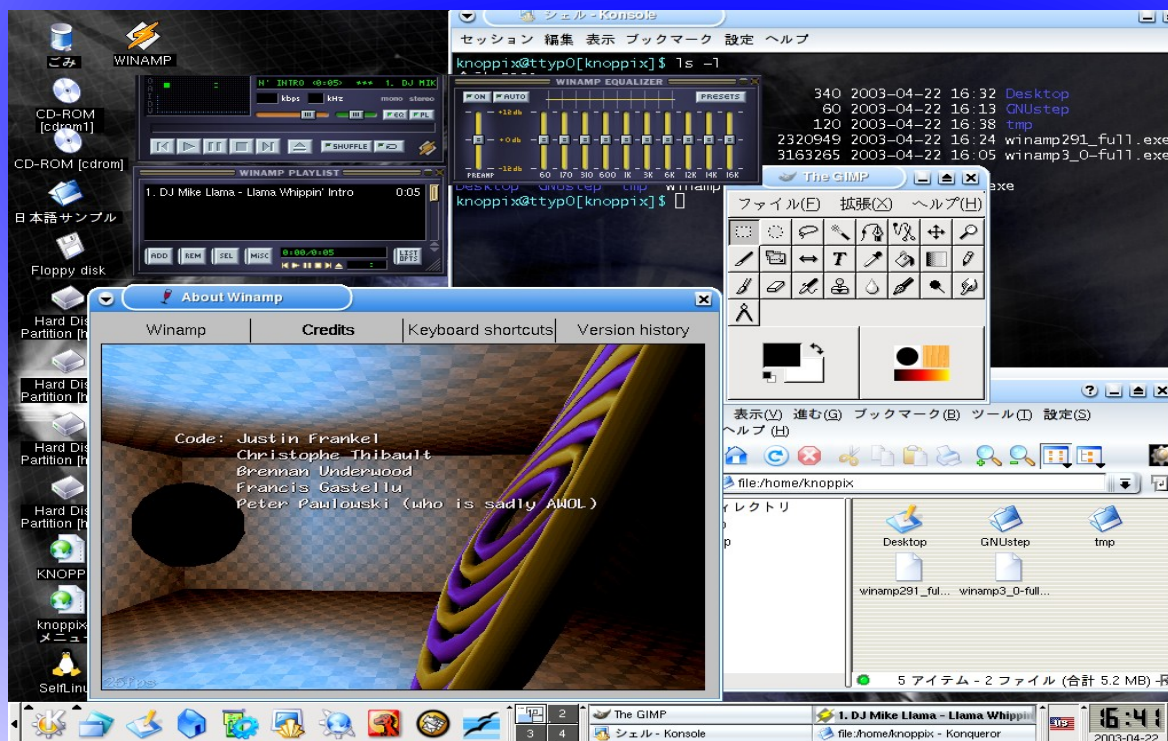
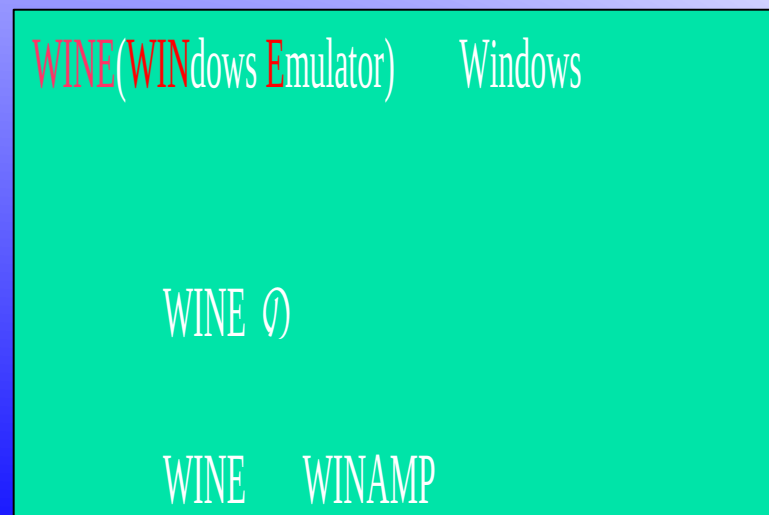
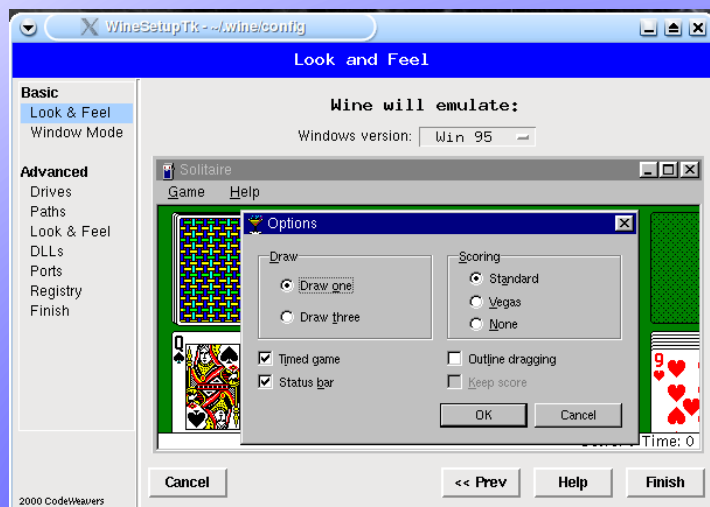
/



OpenOffice PowerPoint の

PowerPoint の /

の



KNOPPIX の

<http://unit.aist.go.jp/it/knoppix>

<http://unit.aist.go.jp/it/knoppix/menu>

YAK(Yet Another Knoppix-jp)

<http://sourceforge.jp/projects/ya-knoppix-jp/>

<http://homepage3.nifty.com/shinchandesu>

knoppix@freeml.com

/ の の URL

<http://www.freeml.com/ctrl/html/JoinForm/knoppix@freeml.com/>

KNOPPIX Linux

Linux Magazine 2002.12 CD

I/O 2003.1

UNIX USER 2003.2 CD

DOS/V POWER REPORT 2003.4 DVD CD

BP Linux 2003.4 CD

Software Desgin 2003.5 CD

BP 2003.2 Linux

KNOPPIX の