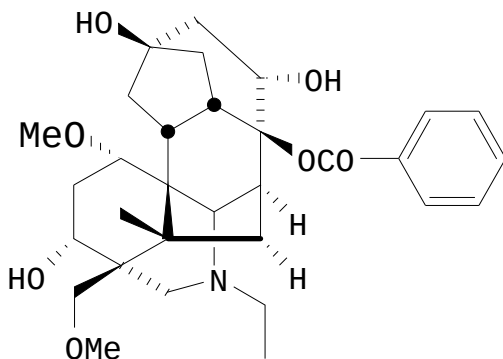


If you want to print this document, note that the structure was entered with Courier and a Postscript printer. With any other printer, it will result in poor quality printing. You can print from the demo version to check the print quality on your printer.

The structure on this page was created with ChemWindow Classic. With Classic we made it easy to include chemical structures in Windows compatible word processors. We've also made it easy to get them back for editing. To illustrate how this works, select this structure:



Copy it to the clipboard. Open ChemWindow Classic. Paste the structure into the ChemWindow Classic document with the Paste command in the edit menu. The structure can be edited. With the retail version, you could copy the structure back to this document after making your changes.

The structure in this document was created by ChemWindow Classic, a product of SoftShell International Ltd.