

WordWeb Help Contents

Glossary of *WordWeb* terms

Read this if you don't understand synonyms, meronyms, hypernyms, etc.

How to use *WordWeb*

How to use the various parts of the *WordWeb* window.

Using *WordWeb* from your word processor

Find out how to use *WordWeb* directly from Word, WordPerfect, WordPro and AmiPro.

Using *WordWeb* with Crossword Compiler

Find out how to get Crossword Compiler and integrate with *WordWeb Pro*

WordWeb Pro

Find out about the extra features of *WordWeb Pro*, and how to order.

Technical information

Find out how to use *WordWeb* from other programs.

License information

This program may be freely copied. Read the small print and copyright info here.

WordWeb Web pages are at <http://www.netword.demon.co.uk/wwweb>.

If you have any suggestions or bugs to report I would be glad to hear from you.
Please E-Mail WordWeb@netword.demon.co.uk.

Crossword Compiler for Windows

Crossword Compiler is a powerful crossword writing program that does grid construction, word finding, clue writing, desktop-publishing and lots more.

WordWeb Pro has been designed to integrate smoothly with Crossword Compiler. You can open the WordWeb window from its Word menu, or you can use it whilst writing clues. When you edit a clue, WordWeb displays the synonyms of that word, and you can paste the word directly into the clue editor. **WordWeb Pro** comes with a word list of 100,000+ words that can be used by Crossword Compiler for grid filling to ensure the grid only contains words in the database.

Features of Crossword Compiler 3.11 for Windows 3.1x include:

Grid editor for puzzles up to 39x39

Word finding and word list manipulation

Automatic grid filling from one of the word lists

Clue editor (with link-up to **WordWeb Pro)**

Clue database maintenance and look up

Export of puzzles to clipboard and RTF files.

Many printout options

Crossword Compiler version 4 for Windows 95 has additional features:

Create barred, coded, clues in squares, coloured, skeleton, fill-in and French-style puzzles.

Thematic, optimised and pangrammatic grid filling

Powerful Word List Manager

Crossword Compiler costs £28 or \$45 US.

Click [here](#) for a detailed list of features, or see [what current users say](#) about it.

See [Ordering in North America](#) or [Ordering elsewhere](#).

If you have an internet connection you should be able to find the latest information about Crossword Compiler at <http://www.netword.demon.co.uk>

Please mail any questions you may have to the order address, or E-Mail to ccw@netword.demon.co.uk.

Crossword Compiler features

There are two versions of Crossword Compiler, version 3.11 for Windows 3.11x, and version 4 for Windows 95. Version 4 has many [additional features](#).

For the latest program features, screen shots and sample output see the web pages at <http://www.network.demon.co.uk>.

Crossword Compiler version 3.11 features

WYSIWIG puzzle design editor with two typing directions for puzzles up to 39x39. Extensive Undo facility to undo up to the last 2000 letter changes. Block filling to speed up puzzle design.

Autofind facility to find words to fit in the puzzle: A list of possible words pops up at a single mouse click. Multiple word list searches.

Automatic grid filling to fill in blank crosswords, or to try to find a fit around existing letters.

Support for grids with **non-rectangular outlines**.

Multi-word anagram finder to help writing cryptic clues.

Wild-card word searches to find words matching a given pattern.

Clipboard copying of puzzle, clues, solution, numbered solution, un-numbered puzzle or answers. Puzzle and solution resizable in host application without loss of quality.

Clue database. Add clues from puzzles, paste clues in from database, browse database and add individual clues.

Automatic symmetry to produce S-Symmetric puzzles, and a double symmetry feature to produce even more symmetric puzzles.

Clue editor. Facility to write joint clues, automatic (overrideable) word length. Pop up list of anagrams and clues in the database. Support for compound words and phrases. Integration with **WordWeb**.

Clue review facility to review the clues with answers in scrollable lists, with pop up clue editor.

Printout of puzzle, solution, clues and clues with answers. Clues printed word wrapped in two columns with number and length of answer.

Customisable square sizes, start-up defaults, page setup, fonts, size ratios and more. Multiple configurations and program icons.

Save as Rich Text Format to allow transfer of puzzles between computers without copying the program. RTF can also be read from some Macintosh programs.

Facility to **add and remove words from word lists**, make new word lists and combine lists.

Word and compound word lists for between 3 and 20 letters for finding anagrams, grid filling and word finding. You can install the lists customised for British or American English.

Supports most West-European languages.

Extensive context sensitive help.

Reference information for cryptic crosswords - an introduction to cryptics and lists of letter and anagram indicators.

Customisable headers for professional puzzle submissions.

Optional extras:

Sets of additional word lists that can be used separately or merged together as liked. Including foreign words, expressions, unusual words, various place names and words in categories.

System requirements:

386 PC, 3MB+ RAM, Microsoft Windows v 3.1 or higher.

What people say about Crossword Compiler

Here are some quotations from existing users of Crossword Compiler.

'I am finding your crossword program excellent - the best I have used. It has greatly speeded and simplified my daily task of creating the Times Two puzzle!'

'1st class program.'

'I congratulate you on this superb application.... I cannot believe its incredible facility of use and extraordinarily fast action.'

'Excellent piece of software'

'Absolutely superb!! Well done.'

'This seems like a great program.'

'Brilliant!'

'Thanks for a great programme. This is one of the best shareware programmes I have used.'

'Brilliant! I've been looking for this program for 2 years!'

'I haven't found a better program than this'

'...it is a terrific program, and I am very pleased with it.'

'It's simply a great crossword compiler'

'Thankyou for a very innovative programme'

'As a computer professional I am impressed with the quality of your program.'

'Firstly, I've used crossword programs before, but this leaves all others in my experience standing! The comprehensiveness and attention to detail are superb. Many thanks!'

'Excellent software'

'This is an incredibly good package - first class'

'Excellent programme, just what I want Thank you!'

License Information

You may use **WordWeb** free of charge for whatever you like - I hope you enjoy the program.

The program is 'bannerware' - I let you use it for free in the hope that you may be interested in my other programs **Crossword Compiler** and **WordWeb Pro**.

WordWeb may be freely distributed without royalty as long as all the files in the distribution are copied together unchanged. If you wish to distribute WordWeb on a CD or cover disk you are free to do so, but please send a copy to Antony Lewis, 16 Townley Rd, London SE22 8SR, England.

Source code for WordWeb may be available for you to use with your applications. Please E-mail me for details of pricing and licensing.

E-Mail: wordweb@netword.demon.co.uk
Internet: <http://www.netword.demon.co.uk/wwweb>.

WordWeb is copyright © Antony Lewis 1997.

WordNet database copyright © Princeton University. All rights reserved.

THIS SOFTWARE AND DATABASE IS PROVIDED "AS IS" AND PRINCETON UNIVERSITY MAKES NO REPRESENTATIONS OR WARRANTIES, EXPRESS OR IMPLIED. BY WAY OF EXAMPLE, BUT NOT LIMITATION, PRINCETON UNIVERSITY MAKES NO REPRESENTATIONS OR WARRANTIES OF MERCHANTABILITY OR FITNESS FOR ANY PARTICULAR PURPOSE OR THAT THE USE OF THE LICENSED SOFTWARE, DATABASE OR DOCUMENTATION WILL NOT INFRINGE ANY THIRD PARTY PATENTS, COPYRIGHTS, TRADEMARKS OR OTHER RIGHTS.

WordWeb Pro

WordWeb Pro offers a few extra features for the enthusiast or word puzzler.

Word searching facility

Enter a pattern as the search word and it will find words that match, e.g.

T???SH	finds THRASH, THRESH and THRUSH
AP*X	finds APEX, APPENDIX and APTERYX
?*Q*P	finds ACQUAINTANCESHIP, EQUIP and REEQUIP

Use * to stand for any number of letters, and ? for one unknown letter.

Anagrams

Enter a word and you can find all straight and multiple word anagrams, e.g.

WordWeb Pro	finds powder brow + many others
begin	finds being, binge, beg in, and gin be.
Great Britain	finds (amongst others) arbitrage nit, irritate bang, battering IRA, arbiter giant, (changing word order..) trite bargain, a brat igniter, tit bargainer, etc.

Crossword Reference

For people interested in crosswords (especially cryptics) the on-line help has:

- introduction to cryptic crosswords
- guide to crossword jargon
- long list of anagram indicators
- long list of letter indicators

WordWeb Pro can also be integrated into Crossword Compiler if you wish to write crosswords.

Since you already have the **WordWeb** database you can upgrade to **WordWeb Pro** for only **£10 or \$18 US** including P&P, which includes a Windows 3.1 and Windows 95 version. Do not delete your WordWeb database files - the upgrade needs them to run.

Ordering in North America

CREDIT CARD ORDERS ONLY -

You can order with MC, Visa, Amex, or Discover from Public (software) Library in the following ways:

Online: Follow the links from <http://www.netword.demon.co.uk/wordweb/ordering.html>.

FAX: To 713-524-6398 ask for product #14213 and please type or block print very plainly.

Email: To PsL at "14213@pslweb.com"

Mail: To PsL at P.O.Box 35705, Houston, TX 77235-5705, USA.

Phone: PsL's operators are available from 8:00 a.m. to 6:00 p.m.
Monday-Friday at 800-242-4775 Ext.14213 or at 713-524-6394 Ext.14213

When you order please make clear that you want the upgrade, not the full product (which costs \$25 and comes on 4 disks instead of just one).

THE ABOVE NUMBERS ARE FOR CREDIT CARD ORDERS ONLY.

Any questions about the status of the shipment of the order, refunds, registration options, product details, volume discounts, site licenses, etc, must be directed to Antony Lewis, 16 Townley Rd, London SE22 8SR, UK (E-Mail WordWeb@netword.demon.co.uk).

Ordering elsewhere

Please send a cheque/EuroCheque/money order for £10 with your name and address to Antony Lewis, 16 Townley Rd, London SE22 8SR, UK. Alternatively use one of the methods listed above under Ordering in North America.

Inquiries by E-Mail can be made to **WordWeb@netword.demon.co.uk**.

Up to date information about **WordWeb Pro** can be found on the World Wide Web at **<http://www.netword.demon.co.uk/wordweb>**

Crossword Compiler Order Form

Please select Print Topic from the file menu and then fill in the form. Send to:
Antony Lewis, 16 Townley Rd, London SE22 8SR, England.

Name:

Address:

Where did you get your copy of WordWeb from?

Please send me the following (put an 'X' for any you want):

___ **Crossword Compiler for Windows 3.1x for £28**

___ **Crossword Compiler for Windows 95 for £28**

___ **WordWeb Pro upgrade for £7**

and the following additional word list sets at £6 each

___ **Disk 1:** Medical, legal, ethnic, names, food, US places, UK places, cities, literature,
Old Testament, IATA, Olympic, school chemistry,
174000+ unusual words and variant spellings.

___ **Disk 2:** 233000+ Words from Webster's second edition,
75000+ Expressions from Webster's second.

___ **Disk 3:** 156000+ German, 131000+ French, 85000+ Spanish, 60000+ Italian.

___ **Disk 4:** 270000+ Finnish, 61000+ Norwegian, 24000+ Danish, 11000+ Swedish.

___ **UK Advanced Cryptics Dictionary:** 210000+ words.

I enclose a cheque, Eurocheque or PO/International Money Order for a total of £_____

(please add £2 P&P if you are outside the EU and £4 if you wish to pay in another currency)

Signed: _____

Comments, suggestions etc:

Ordering Crossword Compiler in N. America

WHAT TO ORDER

Crossword Compiler v3.11 for Windows 3.1x for \$45

Crossword Compiler v4 for Windows 95 for \$45

WordWeb Pro upgrade for \$18

Two disks of additional word lists for \$25

The additional word lists consist of: unusual words and variant spellings, words from Webster's second edition, expressions from Webster's second, medical, legal, ethnic, names, food, US places, UK places, cities, literature, Old Testament, IATA, Olympic and school chemistry.

CREDIT CARD ORDERS

You can order with MC, Visa, Amex, or Discover from Public (software) Library in the following ways:

Online: Follow the links from <http://www.netword.demon.co.uk/ordering.html>.

FAX: To 713-524-6398 ask for product #11992 and please type or block print very plainly.

Email: To PsL at 11992@pslweb.com

Mail: To PsL at P.O.Box 35705, Houston, TX 77235-5705.

Phone: PsL's operators are available from 8:00 a.m. to 6:00 p.m.
Monday-Friday at 800-242-4775 Ext.11992 or at 713-524-6394 Ext.11992

Please make clear when ordering whether you want the Windows 95 or Windows 3.1 version of the program (this is the Windows 95, and more recent, version).

THE ABOVE NUMBERS ARE FOR ORDERS ONLY.

Any questions about the status of the shipment of the order, refunds, registration options, product details, volume discounts, site licenses, etc, should be directed to Antony Lewis, 16 Townley Rd, London SE22 8SR, UK (E-Mail ccw@netword.demon.co.uk).

Crossword Compiler version 4 features

Version 4 only runs under Windows 95. If you only have Windows 3.1x then see [Crossword Compiler 3.11 features](#)

Features

Design and edit puzzles

Create normal crosswords, barred grids, clues-in-squares puzzles, fill-ins, French-style crosswords, coded grids, skeleton puzzles and free-form crosswords. Colour grid lines and squares, show hint letters in the puzzle, include graphics in the grid, and lots more!

Grid filling

Fill in entire blank puzzles, or a particular section, with words from the supplied word list or one of your own. Create thematic and pangrammatic puzzles automatically from word lists. Optimize the filling process to use more good words.

Word finding and anagrammatizing

Quickly find words to fit in a slot in the grid. Search for words matching a pattern. Find multi-word anagrams of words and all the words that can be made from the letters of another word. Search through different word lists (including ones youve made yourself).

Clue editor

Facility to write joint clues (link words in the grid together). Find anagrams of the clue word. Look up cryptic abbreviations in the supplied, or your own, look up files. Optional automatic word length after clues, with support for compound words and phrases. Use italic, bold and underline in clues. Add explanations/citations to each clue.

Clue database

Add clues from puzzles, paste clues from the database into the clue editor, browse and edit the database. Use clues that are most recent, oldest, or randomly.

Print out and export to other programs

Copy your puzzles to the clipboard or save to a file for use in other programs. Export puzzle, solution, numbered solution, clues, answers and explanations. Export grids as picture or bitmap. Export for use with Java crossword program or Across solving software. Print out clues with answers for professional crossword submissions.

Word List Manager

Simply view, edit and create word lists. List manipulations and conversions. Use different character sets for multilanguage crosswords. Word lists can contain words from 2-50 letters long.

Customise most properties of the grid and clues

Change square sizes, size ratios, fonts, colours, line thickness, side numbering, clue numbering, clue spacing, etc. Save settings and grids in template files for easy reuse.

Puzzle information and printout headers

Supply a title, author, copyright and description for each puzzle. Printout headers containing this information or statistics for the puzzle. Customise the headers with different fonts, styles, etc.

Multilanguage support

Supports most Western languages. Create word lists with different Windows character sets (e.g. Cyrillic, Turkish, East European, etc.)

Extensive context sensitive help

Find help related to what you are doing at the press of a button. The help file explains all the features of the program, and tells you how to go about create the various types of puzzle.

Link up to dictionaries from the clue editor

Add buttons to the clue editor ToolBar so you can look up words in dictionaries. Smooth integration with the WordWeb Pro thesaurus/dictionary add-on.

Optional extras

Sets of additional word lists are available, including foreign words, expressions, unusual words and words in categories. You can use these lists for word finding, grid filling, adding to other lists, or basically whatever you like! WordWeb Pro thesaurus/dictionary can be used from the clue editor or to look up a word in the grid.

System requirements

486 or higher PC running Windows 95.

Search Word

Type here the word that you want to look up in the **WordWeb** database.
When you have entered the word press Enter, or click on the Search button.

Search Button

Press this button to look up the word in the Search Word edit box.

Show Nouns

Press this button to only show words which are nouns (or press Alt+N).

If the button is disabled it means there is no sense in which the word is a noun.

Show Verbs

Press this button to only show words which are verbs (or press Alt+V).
If the button is disabled it means there is no sense in which the word is a verb.

Show Adjectives

Press this button to only show words which are adjectives (or press Alt+A).

If the button is disabled it means there is no sense in which the word is an adjective.

Show Adverbs

Press this button to only show words which are adverbs (or press Alt+R).

If the button is disabled it means there is no sense in which the word is an adverb.

Sense descriptions

This box shows the different senses of the word you are looking up.
Different senses are numbered for each word type, nouns first, then verbs,
adjectives and adverbs.

See how to [show synonyms by sense](#).

Showing synonyms by sense

You can filter the synonyms (and all the other related words) to show only ones related to a particular sense of the search word: click on the number part of one of the senses. Alternatively you can press TAB until the cursor appears in the sense section, use the cursor keys to move the cursor onto the sense you want to view, and press ENTER.

For example if the search word is **diffuse** then your sense list would be

Verb: diffuse

- 1. move outward**
- 2. permeate**
- 3. as of information**

The synonyms include **broadcast, disperse, spread out, permeate**, etc. To show just the senses corresponding to **move outward**, click on the '1'. You will then only see the synonyms **fan out, spread out** and **spread**.

Once the synonyms are restricted to one sense, you can change the sense by using the up and down cursor keys. Press ESC to show all senses once again.

Showing synonyms by word type

The four buttons at the side of the synonym list box show whether the search word is a noun (**N**), verb (**V**), adjective (**A**) or adverb (**R**). A button is grayed if the search word does not have a meaning of that word type. These are also displayed on the View menu at the top of the window.

Click on one of the buttons to show only synonyms of that type, or use Alt+ the letter on the relevant button.

To show all the synonyms again (regardless of type) just click on the button again.

Showing related words

The tabs at the bottom of the synonyms list box show the different available types of related word. Just click on the a tab to see words of that relationship, e.g. to see the antonyms of the search word click on the tab that says Antonyms (if no such tab is present it means there are no antonyms in the database). You can also see related words by pressing Alt + the underlined letter on the tab.

See [Glossary of terms](#) for explanation of the different types of related word.

Glossary of **WordWeb** terms

Synonyms	Words which mean the same in some context <i>e.g. close is a synonym of shut.</i>
Antonyms	Words meaning the opposite in some context <i>e.g. big is an antonym of little</i>
Attribs	A noun for which the adjective expresses value <i>e.g. big is an attribute of size.</i>
Holonyms	X is a holonym of Y if Y is part of X <i>e.g. forest is a holonym of tree</i>
Hypernyms	X is a hypernym of Y, if Y is a kind of X. Less specific words. <i>e.g. vegetation is a hypernym of scrub</i>
Hyponyms	X is a hyponym of Y if X is a kind of Y. More specific words. <i>e.g. palace is a hyponym of mansion</i>
Meronym	X is a meronym of Y if X is a part of Y <i>e.g. bumper is a meronym of car</i>
Similar	Words with meanings that are close <i>e.g. big is similar to huge</i>

Technical Information

WordWeb works through a Windows DLL which you can use from other applications By calling procedures in the DLL you can pop up the WordWeb box from other programs.

If you wish to use **WordWeb** from your wordprocessor, say, you could write a macro to call the DLL functions to display the synonyms of the word you have selected in the wordprocessor.

There are two versions of the DLL, one called WORDWEB.DLL for Windows 3.1x, and one called WWEB32.DLL for Windows 95+.

I have written interfaces for MS Word 6/7/8, Corel WordPerfect 7 and Lotus Word Pro 96. Other people have kindly send me macros for MS Word 2 and AmiPro. See the [Using WordWeb from your word processor](#) topic for how to use these. If you write a macro for other programs I would be happy to add them to future versions of WordWeb.

For the programmers amongst you, heres what the Borland Pascal/Delphi declarations for the DLL API look like in case you want to write your own macros:

```
function ShowWordWeb(P:PChar; AParent:Integer):integer; {index 1}
```

Shows WordWeb with **P** as the search word, **AParent** as the parent window. If **P** is nil then WordWeb is not initialized with any search word. Returns a handle to the WordWeb window. You must have AParent non-zero or retain the return handle. It will then either close when you close AParent or, in the second case, you can send it a message to close it.

function ShowModalWordWeb(InP,OutP:PChar; CloseOnCopy:Boolean; AParent:Integer): Boolean; {index 2}

Shows WordWeb modally - i.e. it shows the window but waits for the window to close before returning. **InP** functions the same as **P** in ShowWordWeb. **OutP** points to a buffer to contain any selected word (the buffer should be 255 bytes long). **CloseOnCopy** determines whether the function returns with the selected word when the user presses the copy button. If this is true, pressing **Copy** closes the window, **OutP** contains the selected word and the function returns true. If WordWeb is closed by pressing **Close** the function returns false.

All the other DLL API functions are reserved for use by Crossword Compiler.

The **Boolean** and **Integer** parameters should be 2 bytes if using WORDWEB.DLL, or 4 bytes if using WWEB32.DLL. If you are using Delphi with WWEB32.DLL remember to declare the functions as **stdcall**.

You may be able to license the WordWeb source code - please email wordweb@netword.demon.co.uk for details.

Copy

Press the copy button to copy the selected word to the clipboard.

If there is selected text in the definition section then that will be copied, otherwise the word selected in the list box. If you are running **WordWeb** from another program this button may close the window.

Close

Press this button to close the *WordWeb* window.

Tabs

Click on one of the tabs to show different sets of related words.
See [glossary of terms](#) for what the different words on the tabs mean.

Synonyms list box

This show the synonyms of the search word, or other sets of related words indicated on the tabs at the bottom.

Double click on an item in the list to look it up in the database.

History list

Click on this to show the list of words previously searched for.
You can press the up and down cursors to move quickly up and down the list without clicking this button.

Showing related words

WordWeb not only finds synonyms of words, but also a whole host of other words related in some way to the search word. The different types of relation are explained in the [glossary of terms](#).

When you first look up a word **WordWeb** displays the synonyms in the list box in the lower half of the window. The other types of related word available are shown in the set of tabs at the bottom of the list box. Just click on one of these to show the related words of that type.

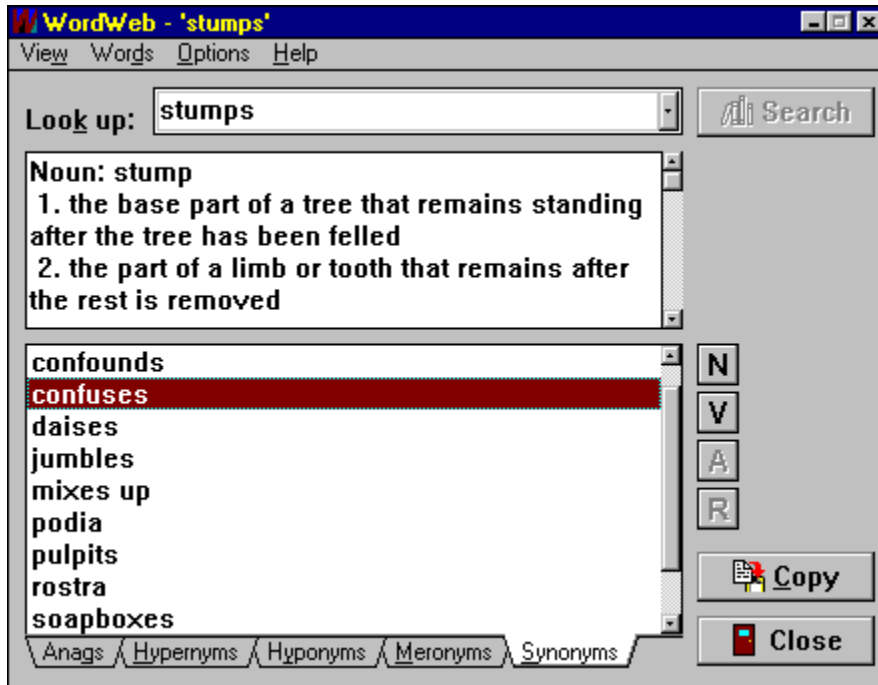
Using *WordWeb*

Click on a part of the window to see a description of what it does, or select one of the following topics:

Showing synonyms by sense

Showing synonyms by word type

Showing other related words



Note that the window looks slightly different in the Windows 95 version - the tabs are at the top of the synonyms box, but the functionality is much the same.

Options

There are three options on the Options menu - select one of them and a tick will appear by the menu to show that you have that option selected.

Show roots only

By default **WordWeb** displays synonyms in the same case as the search word, e.g. if you search for **hoped** then it will display **desired, expected**, etc. If you select the **Show roots only** option it will display **desire, expect**, etc. The root of the search word found in the database is displayed in the sense descriptions. Select Show roots only to get the synonyms as they appear in the database.

This has some advantage with synonyms of nouns that are more than one word. **WordWeb** doesn't know how to pluralize most compounds, so with **Show roots only** selected it will show more synonyms.

Show Hints

Select this option to show pop-up hints when you pause with the mouse over buttons in the window.

Stay on top

Select this option to make the **WordWeb** window stay on top of other windows so that you can always see it.

AmiPro Macro

Here's a macro to use **WordWeb** from AmiPro. Copy the text below to use it in AmiPro.
Many thanks to Michael Lee for writing this.

----Copy text below this line----

' Ami Pro macro to call the WordWeb Thesaurus using the current selection as the search word. If the user clicks the copy button from WordWeb, the selection made in WordWeb will replace the current selection in Ami Pro and will highlight the word.

' Possible Enhancements:

- ' 1. Have the macro select a word if one hasn't already been made.
- ' 2. If the current selection does not span the word or includes a space, adjust the selection to span the word exactly

' Written by Michael Lee (orchid@got.net)

FUNCTION InsertWordWebSynonym()

' Check if a word is selected

' If not selected, signal user and exit macro

IF (CurShade\$() = "")

 Message("Please make a selection first.", "WordWeb Thesaurus Macro")

ELSE

' A word has been selected

' Load WordWeb DLL Function

hShowModalWordWeb = DLLLoadLib("wordweb.dll", "ShowModalWordWeb",
"ACCAI")

' Check if DLL loaded okay

IF(hShowModalWordWeb > 0)

' DLL is loaded.

' Use current selection to pass to WordWeb

cCurrentSelection = CurShade\$()

DEFSTR cReplaceWord;

' Call WordWeb

bResult = DLLCall(hShowModalWordWeb, cCurrentSelection, &cReplaceWord, TRUE,
0)

' Insert the replacement word into the current selection if the user selected the copy button from WordWeb

' Then, select the newly inserted word.

IF (bResult = TRUE)

 TYPE(cReplaceWord) ' insert the word

 TYPE("[CtrlShiftLeft]") ' select the word

ENDIF

' Free WordWeb DLL

DLLFreeLib(hShowModalWordWeb)

ENDIF ' DLL is loaded

ENDIF ' A selection has been made

END FUNCTION

MS Word 2 macro

Here's a macro to use **WordWeb** from Word for Windows version 2. You need WORDWEB.DLL in your Windows directory to use this macro. You can transfer the macro from here to Word by selecting the text below and copying to the clipboard.

To use WordWeb from Word 6 or higher use the WORDWEB.DOT template file supplied.

Many thanks to Andrew Blais for adapting my original Word 6 macro to Word 2.

----Copy text below this line----

```
Declare Function ShowModalWordWeb Lib "WordWeb.DLL"(In$, Out$, CloseOnCopy
As Integer, AWindow As Integer) As Integer
Sub MAIN
On Error Goto IsEnd
CharRight(1, 1)
I$ = Selection$()
```

```
While Not I$ = " " And Not I$ = "." And Not I$ = "," And Not I$ = "!" And
Not I$ = Chr$(34)
If I$ = Chr$(39) Then Goto Over
CharLeft(1, 0)
CharRight(1, 0)
CharRight(1, 1)
I$ = Selection$()
Wend
If I$ = " " Then WordLeft(1, 1) Else WordLeft(2, 1)
Goto OverOver
Over:
CharLeft(1, 0)
Let n = 0
CharLeft(1, 1)
I$ = Selection$()
```

```
While Not I$ = Chr$(39) And Not I$ = " "
CharRight(1, 0)
CharLeft(1, 0)
CharLeft(1, 1)
I$ = Selection$()
Let n = n + 1
Wend CharRight(n + 1, 1)
```

```
OverOver:
StrI$ = Selection$()
```

```
If ShowModalWordWeb(StrI$, Out$, 1, 0) Then
EditClear
Insert Out$
```

End If

IsEnd:

End Sub

Using **WordWeb** from your word processor

WordWeb can be used directly from some word processors. You just run a macro, which pops up WordWeb showing synonyms for the currently selected word in your word processor. Pressing Copy then replaces the word with the word you selected in WordWeb.

Before using any of the macros you need to copy the WWEB32.DLL and/or WORDWEB.DLL files (depending on whether you have the Windows 95 or Windows 3.1 versions of WordWeb) to your windows directory, probably C:\WINDOWS.

Using WordWeb from MS Word

You can use WordWeb in MS Word version 6, 7 or 8 using the WORDWEB.DOT template supplied with WordWeb. To use the template just copy it to your **winword\startup** directory (e.g. c:\msoffice\winword\startup). For use with Word 6 you will need WORDWEB.DLL, for use with Word 7 or 8 you need WWEB32.DLL in your Windows directory.

Once you've copied the template, just start Word and click on the button on the WordWeb toolbar to show WordWeb.

The same template works with both Word 6, 7 and 8. There is also a [macro for MS Word 2](#) which you can use. If you are using Word 8 you may like to open and save the template - this will speed up using the template as Word will convert it to the new Word 8 format.

Using WordWeb from Corel WordPerfect 7

You can use WordWeb from WordPerfect by using the WWebUK.wcm or WWebUS.wcm PerfectScript macros supplied with WordWeb. If you are using the UK version then use the WWebUK.wcm macro, if the US version use the WWebUS.wcm macro. To run the macro just select Tools | Macro | Play..., and open the macro file. You can also assign the macro to a button or menu if you like see the WordPerfect Help for more information.

Observant users may notice a remarkable similarity between the data in WordWeb and the WordPerfect thesaurus. The programs themselves are however quite different - I only discovered the similarity by accident!

Using WordWeb from Lotus WordPro

You can use WordWeb from WordPro by using the WordWeb.LSS LotusScript file supplied with WordWeb. To show WordWeb just select Edit | Script & Macros | Run... and click Browse to open the WordWeb.LSS script. You need WWEB32.DLL to use WordWeb from WordPro 96.

If you like you can assign the script to a toolbar button and save the script in your default WordPro document so that you can always use WordWeb with the click of a button. See the WordPro help for details of how to do this.

Using WordWeb from AmiPro

There is also a [macro for AmiPro](#)

Fonts

You can use **WordWeb** with three different font settings: small, normal and large. To change the font size just select **Font** from the **Options** menu, and select the one you want.

Resizing the WordWeb Window

You can resize the **WordWeb** window by dragging the bottom right corner with the mouse.

The size of the window is saved when you close **WordWeb** so that it will start up the same size next time.

If you change the window size you may also wish to change the window font.

