

Keyboard Express Contents

Keyboard Express is a Windows keyboard macro. It allows you to issue just about any series of keystrokes to your windows applications with the touch of a couple of keys. These keystrokes can manually be entered in and assigned to up to 364 hot keys. Additionally, keystrokes can be automatically captured as you type in one of your Windows applications.

Once running, Keyboard Express can be invoked by holding down the CTRL key and clicking the right mouse button.

Main Topics

[Adding Hot Keys](#)

[Capturing Keystrokes](#)

[Copying Hot Keys](#)

[Dates and Times](#)

[Disabling Hot Keys](#)

[Entering Keystrokes](#)

[Hot Keys](#)

[Main Window](#)

[Menu Commands](#)

[Moving Hot Keys](#)

[Playing Back Keystrokes](#)

[Program Launching](#)

[Removing Hot Keys](#)

[Using DELAYS and PAUSES](#)

[Commonly Asked Questions](#)

[Support and Upgrade Policy](#)

[License, Copyright and Disclaimer](#)

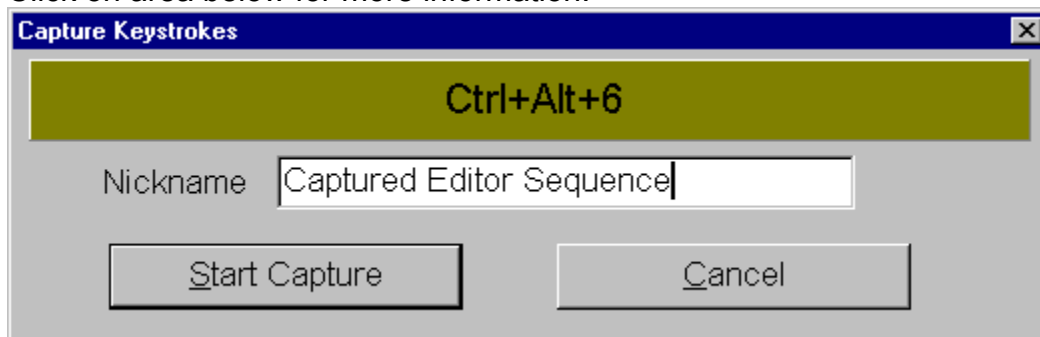
[INI File](#)

Capturing Keystrokes

Keyboard Express allows you to capture keystrokes as you enter them and assigns them to a hot key. The steps to capturing keystrokes are as follows:

1. Select a hot key from the available list from the Main Window or the Add Hot Key Window of Keyboard Express
2. Click on the Capture Keystrokes button on the window
3. The window below should now appear. You may enter a name that will remind you what the key does in the nickname field.
4. Click on the Start Capture button. The capture process will now start.
5. When you are ready to terminate capturing keystrokes, invoke Keyboard Express once again by holding down the CTRL key and either click on the right mouse button or press down the UP ARROW key. Confirmation will then be given that the capture has been accomplished.

Click on area below for more information.



There is an upper limit of roughly 5000 characters that can be captured per hot key. Certain keys are ignored by Keyboard Express and are not captured. These include keys such as "Print Screen", "Scroll Lock", "Pause", "Num Lock", "Caps Lock" and a few others which may appear on specialized keyboards. Function keys, arrow keys, page up, home, etc are all supported.

This is the name of the hot key to which all keystrokes captured will be assigned.

The "Nickname" is a name you can give to the hot key that implies what the hot key does. This will allow you to more readily understand what is assigned to each hot key. For example, if you assign your home address to a hot key, then you might make the nickname something like "My Home Address".

The "Start Capture" button immediately starts the keystroke capturing process. Keyboard Express will disappear from the screen and the last program running prior to invoking Keyboard Express will be displayed. Simply start to type away and when you are ready to finish the capture, then invoke Keyboard Express once again. This can be done by holding down the CTRL key and either clicking on the right mouse button or pressing the UP ARROW key.

The "Cancel" button allows you to abort the capture process in case you decide against it.

Hot keys

Hot Keys are keystroke combinations made using the SHIFT, CTRL and ALT keys along with other keys on the keyboard. Keyboard Express supports up to 364 such key combinations. Playback of a series of keystrokes can be assigned to each of the hot keys. The following is a comprehensive list of available hot keys.

<CTRL> <Alpha Character>
<CTRL> <Numeric>
<CTRL> <FKey>
<ALT> <Alpha Character>
<ALT> <Numeric>
<ALT> <FKey>
<CTRL> <SHIFT> <Alpha Character>
<CTRL> <SHIFT> <Numeric>
<CTRL> <SHIFT> <FKey>
<CTRL> <ALT> <Alpha Character>
<CTRL> <ALT> <Numeric>
<CTRL> <ALT> <FKey>
<ALT> <SHIFT> <Alpha Character>
<ALT> <SHIFT> <Numeric>
<ALT> <SHIFT> <FKey>
<CTRL> <ALT> <SHIFT> <Alpha Character>
<CTRL> <ALT> <SHIFT> <Numeric>
<CTRL> <ALT> <SHIFT> <FKey>
<FKEY>
<SHIFT> <FKEY>

The following special keys can be used with <SHIFT>, <CTRL>, <ALT>, <SHIFT><ALT>, <CTRL><ALT>, <CTRL><SHIFT> and <CTRL><ALT><SHIFT>:

Enter Key
Space Key
Tab Key*
Backspace Key
Insert Key
Delete Key**
Home Key
End Key

* <ALT> and <ALT><SHIFT> are not available

** <CTRL><ALT> and <CTRL><ALT><SHIFT> are not available

Entering Keystrokes

Keystrokes for a given hot key may be created or modified via the Modify Hot Key window. The steps to manually entering keystrokes are as follows:

1. Select a hot key from the available list from the Main Window or the Add Hot Key Window of Keyboard Express
 2. Click on the Enter Keystrokes button on the window
 3. The window below should now appear. You may enter a name that will remind you what the key does in the nickname field.
 4. Type in the text you desire and/or use the special calculator buttons to simulate the keystrokes which cannot be entered directly from the keyboard.
- Click on the Update button. The keystrokes will be saved.

Click on an area below for more information.

Modify Hot Key

Ctrl+Shift+A

Nickname: My Name

Enter Keystrokes

Michael D. Jones

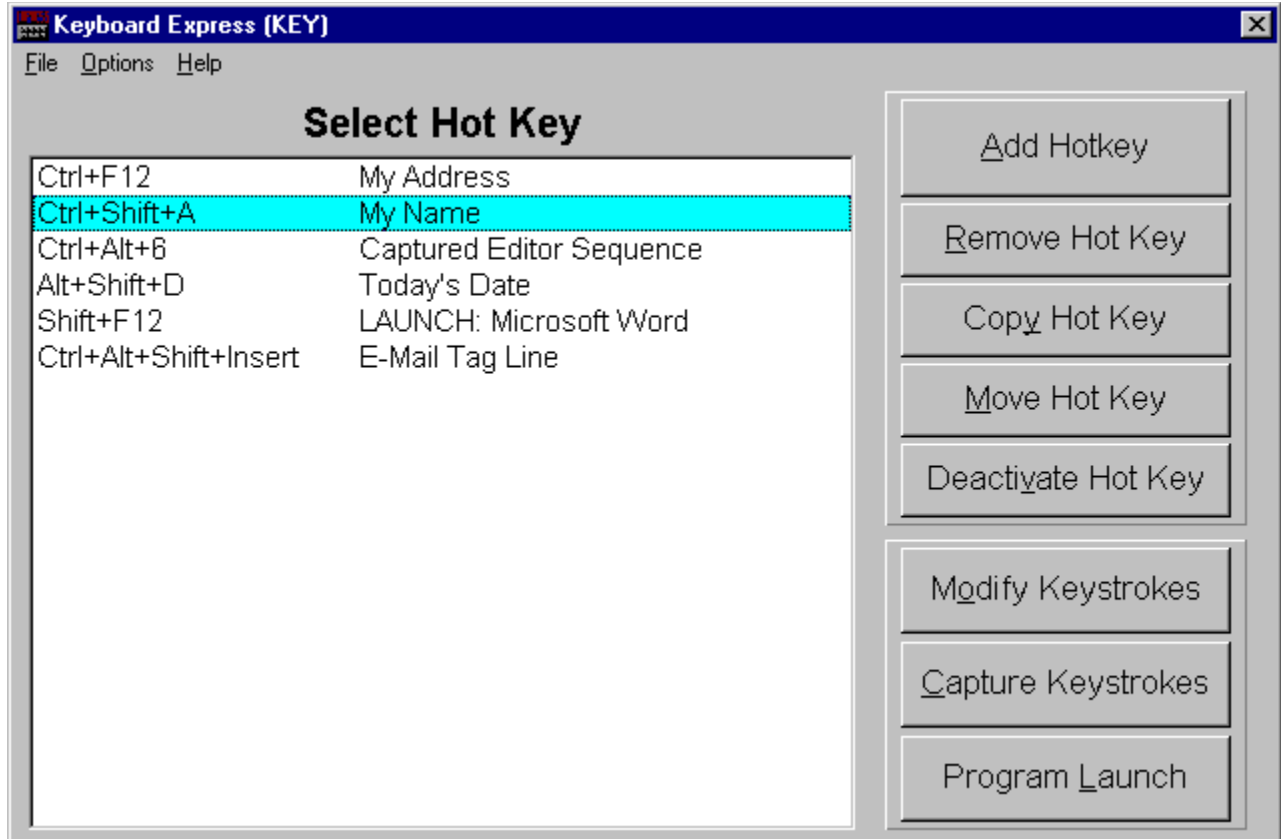
Shift	Tab	Insert	Up Arrow	Page Up	DELAY						
Ctrl	Backspace	Delete	Down Arrow	Page Down	PAUSE						
Alt	Enter	Home	Left Arrow	DATE							
Space	Esc	End	Right Arrow	TIME							
F1	F2	F3	F4	F5	F6	F7	F8	F9	F10	F11	F12

Update Cancel

Main Window

The main window of Keyboard Express displays a list of all currently defined hot keys. Here you may choose to add a new hot key, remove an existing one, copy one, move one, disable/enable one, assign new keystrokes, automatically capture keystrokes or assign a program to launch.

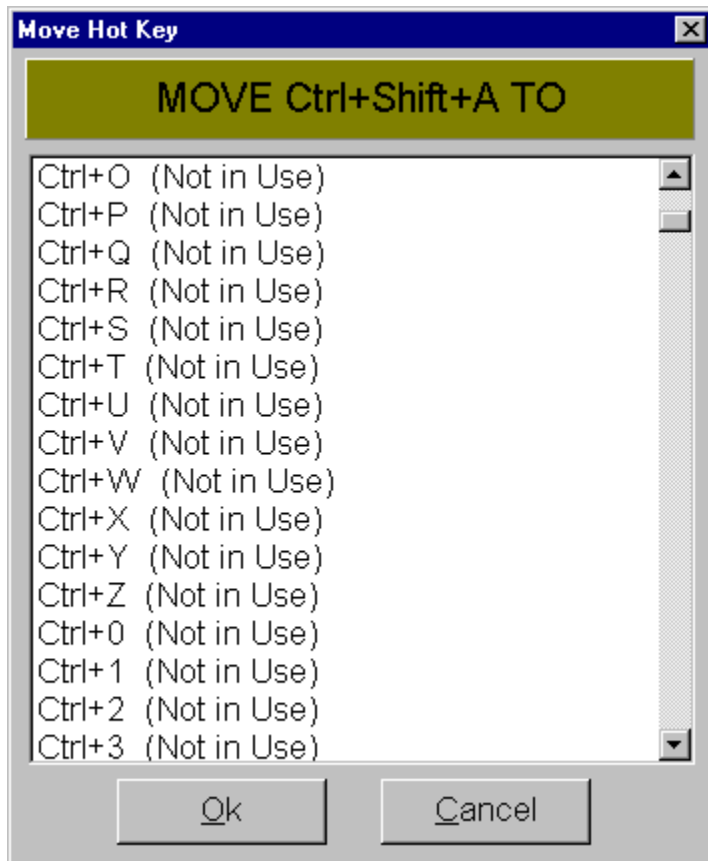
Click on an area below for more information.



Moving Hot Keys

You may wish to move a hot key so that another hot key performs the same function. The hot key that is moved will then become inactive. To do so, you will need to select an active hot key from the hot key list on the Main Window. Once selected, simply click on the "Move Hot Key" button or choose OPTIONS | MOVE HOT KEY from the menu. A window similar to the one below will appear. Simply select the new hot key that the original should be moved to. Click the Ok button and the the hot key will be moved. A new entry will appear in the hot key list box on the main window and the old entry will be removed.

Click on an area below for more information.



You may select a hot key from the list box of Hot Keys on the Add Hot Key window. Next to each hot key, surrounded in parenthesis, is the nickname associated with the hot key. If no keystrokes have been assigned to a given hot key, then "Not in Use" will be displayed.

New File
Open File
Print Hot Key List
Hide Keyboard Express
Terminate Keyboard Express

Support and Upgrade Policy

Upgrade Policy

The code (.EXE file) for the registered and unregistered versions of the program are identical. It is the presence of a file KEYEXP1X.DLL (KYX951X.DLL for 32 bit version) that is supplied with the registered version that causes the program to behave in a registered fashion. The presence of the DLL will also cause any further versions of Keyboard Express that still bear the 1.x release number to behave as registered versions, wherever you obtain them from. Versions that bear the 1.x release number will generally be for minor enhancements and bug-fixes. Any release containing major new functionality will bear the release number 2.x, and an upgrade fee will likely be chargeable.

NOTE: You may not distribute copies of the licensed version of this product. You may not distribute the KEYEXP1X.DLL or KYX951X.DLL file in any form.

We will make new versions of Keyboard Express available via the usual sources such as on-line services like CompuServe, AOL, the Internet and other BBSs and via disk vendors, shareware CD-Roms, etc.

The prime locations for new releases are as follows:

CompuServe: Library 4 of the UKSHARE forum

Internet: World Wide Web: <http://www.smartcode.com/iss>

FTP Site: <ftp://ftp.smartcode.com>

If you do acquire a newer version of Keyboard Express simply ensure that the KEYEXP1X.DLL or KYX951X.DLL file you received when you registered is either in the directory that the Keyboard Express program is in or is in your WINDOWS directory.

Getting Support

[Before you reach for the phone](#), please make sure you have looked through this Help File first. If you have a question that this Help File doesn't answer, or are reporting what appears to be a bug then we will be pleased to hear from you. But if it is a question that is answered in this Help file then all we will do is point you to the relevant section, and you will just get an answer a little bit slower. This is not meant to be awkward, but we try to keep our costs down to allow us to produce this high quality software at value-for-money prices, and answering support calls is an expensive undertaking. After all, some of the major software companies either charge for support or provide it on premium-price phone numbers. We don't want to have to do that.

USA

Insight Software Solutions, Inc.
P.O. Box 354

Bountiful, UT 84011-0354
USA

Phone	801 295-1890
Fax	801 299-1781
CIS E-Mail	71672,3464
Internet	71672.3464@compuserve.com

United Kingdom

Oakley Data Services,
1, Beechwood Avenue
Hartford, Northwich
Cheshire CW8 3AR
United Kingdom

Phone:	(+44) (0)1889 5650649
Fax:	(+44) (0)1889 563219
CIS E-Mail:	74774,1347
Internet:	74774.1347@compuserve.com

Other

Please direct all correspondence directly to Insight Software Solutions, Inc. in the USA.

This program is authored by: Insight Software Solutions, Inc.

Playing Back Keystrokes

Playing back keystrokes is simple. Once you have defined your keystrokes for the hot key, simply press the hot key combination while inside any windows program. All keystrokes will then be sent to your windows application. The keystrokes are not actually sent until the hot key combination is released. For example, if you have assigned your business name to <CTRL> <SHIFT> , then you would hold down the CTRL key and also the SHIFT key and then press the letter "B". Once you let go of all the keys, your business name would be sent directly to the program you are running which might presumably be a word processor.

File Options Help

The "Help" command in the menu simply lists options for invoking this help file (Contents), displaying current version number of the program (About) and for listing our other products (Other Products).

You can choose to have the program run at different screen sizes by selecting "Options | Screen Size" from the main menu. If you are running your Windows at a high resolution, you may opt to choose to run the program at the same high resolution so that it fills the screen and is more legible. Alternatively, you may wish to run it at a lower resolution as to view multiple programs at once. Four standard resolutions are supported: 640 x 480, 800 x 600, 1024 x 768 and 1280 x 1024. If your computer does not support the higher resolutions, you will not be able to select them.

You may "Hide Keyboard Express" by selecting the menu option FILE | HIDE KEYBOARD EXPRESS or by simply clicking on another window with the mouse. Hiding the program makes it not appear in the normal queue of programs. Activating it once again can only be accomplished by holding down the CTRL key and clicking on the right mouse button or using the chosen program activation hot key. By default, when Keyboard Express is running and it is not showing, then it is hidden.

You may exit or terminate Keyboard Express by selecting the FILE | TERMINATE
KEYBOARD EXPRESS option from the main menu.

A file named KEYEX.INI is created in the Windows directory. This file contains initialization information for the program such as the screen size and date and time formats. It is in ASCII format and may be edited directly if so desired, but should be done with caution. Removal of this file will reset all values back to the program defaults the next time the program is run and the file will be recreated.

Special Formats

Certain keys cannot be typed in directly. Therefore "Special Formats" have been assigned these keys. You may type these formats in directly or use the associated buttons which will place the special format in the edit box. These special keys and formats are as follows.

Shift Key -- <SHIFT>

Ctrl Key -- <CTRL>

Alt Key -- <ALT>

Tab Key -- <TAB>

Backspace Key -- <BACKSPACE>

Enter Key -- <ENTER>

Esc Key -- <ESC>

Insert Key -- <INSERT>

Delete Key -- <DELETE>

Home Key -- <HOME>

End Key -- <END>

Up Arrow Key -- <UP ARROW>

Down Arrow Key -- <DOWN ARROW>

Left Arrow Key -- <LEFT ARROW>

Right Arrow Key -- <RIGHT ARROW>

Page Up Key -- <PAGE UP>

Page Down Key -- <PAGE DOWN>

F1 Key ... F12 Key -- <F1> ... <F12>

Special options are also available for the DATE and TIME.

Special options are also available for using DELAYS and PAUSES.

Note: Use of the <ALT> key does not always work properly for activating menu commands. (Example: "<ALT>f" for activating the file menu command) If a menu command does not appear to work or to ensure that a menu command will always work, use <ALT> twice (Example: "<ALT><ALT>f"). Two <ALT>s in a row is the same as pressing and releasing the ALT key which will activate the menu.

Clicking the "Update" button will save and assign the text to the current hot key.

The "Cancel" button allows you to abort the process of entering keystrokes in case you decide against it.

Using Dates

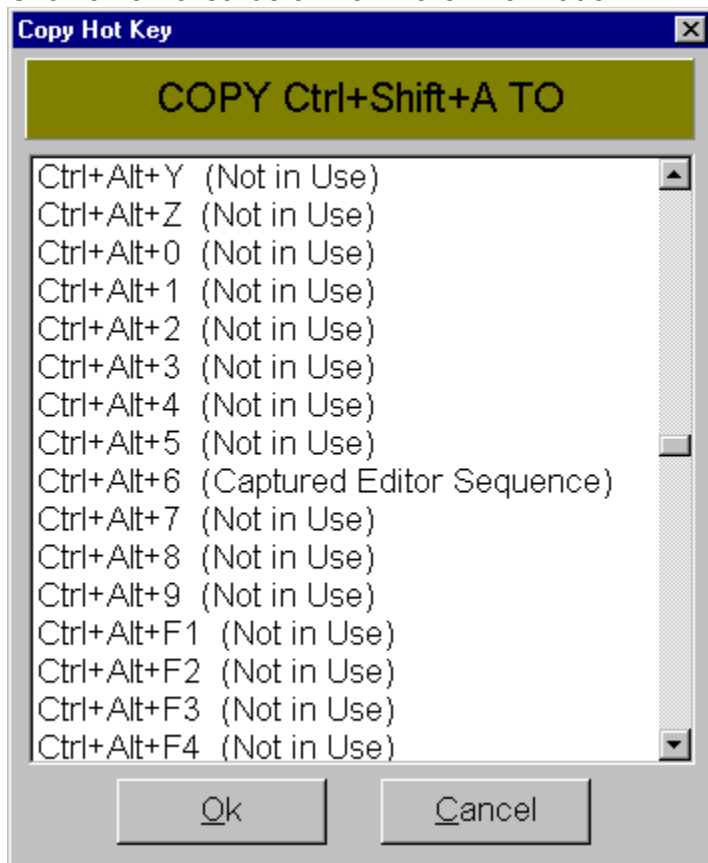
The current date can be placed inside your text that is played back by your hot key. A variety of date formats are available. When selecting a date format, you will be presented with a list of available choices. This list along with a representation of the format is listed below. You may also specify to have all leading zeros in numbers not be shown.

MM/DD/YY	03/30/96
MM-DD-YY	03-30-96
MM.DD.YY	03.30.96
MM/DD/YYYY	03/30/1996
MM-DD-YYYY	03-30-1996
MM.DD.YYYY	03.30.1996
DD/MM/YY	30/03/96
DD-MM-YY	30-03-96
DD.MM.YY	30.03.96
DD/MM/YYYY	30/03/1996
DD-MM-YYYY	30-03-1996
DD.MM.YYYY	30.03.1996
YY/MM/DD	96/03/30
YY-MM-DD	96-03-30
YY.MM.DD	96.03.30
YYYY/MM/DD	1996/03/30
YYYY-MM-DD	1996-03-30
YYYY.MM.DD	1996.03.30
MMM YYYY	MAR 1996
Mmm YYYY	Mar 1996
DD MMM YY	30 MAR 96
DD Mmm YY	30 Mar 96
DD MMM YYYY	30 MAR 1996
DD Mmm YYYY	30 Mar 1996
DD Mmmmm YY	30 March 96
DD Mmmmm YYYY	30 March 1996
Mmm DD YY	Mar 30 96
Mmm DD, YY	Mar 30, 96
Mmm DD YYYY	Mar 30 1996
Mmm DD, YYYY	Mar 30, 1996
Mmmmm DD YY	March 30 96
Mmmmm DD, YY	March 30, 96
Mmmmm DD YYYY	March 30 1996
Mmmmm DD, YYYY	March 30, 1996

Copying Hot Keys

You may wish to copy a hot key so that another hot key has the same function. You may wish to do this to create similar functions as you can simply edit the freshly copied hot key. To do so, you will need to select an active hot key from the hot key list on the Main Window. Once selected, simply click on the "Copy Hot Key" button or choose OPTIONS | COPY HOT KEY from the menu. A window similar to the one below will appear. Simply select the new hot key that the original should be copied to. Click the Ok button and the the hot key will be copied. A new entry will appear in the hot key list box on the main window. The nickname will be the same as the original. To change the nickname, simply modify the hot key.

Click on an area below for more information.



Removing Hot Keys

You may wish to remove a hot key from being active. To do so, you will need to select an active hot key from the hot key list on the Main Window. Once selected, simply click on the "Remove Hot Key" button or choose OPTIONS | REMOVE HOT KEY from the menu. The hot key will be removed from the list of active hot keys on the main menu and will appear as "not in use" on the list that is displayed on the Add Hot Key window.

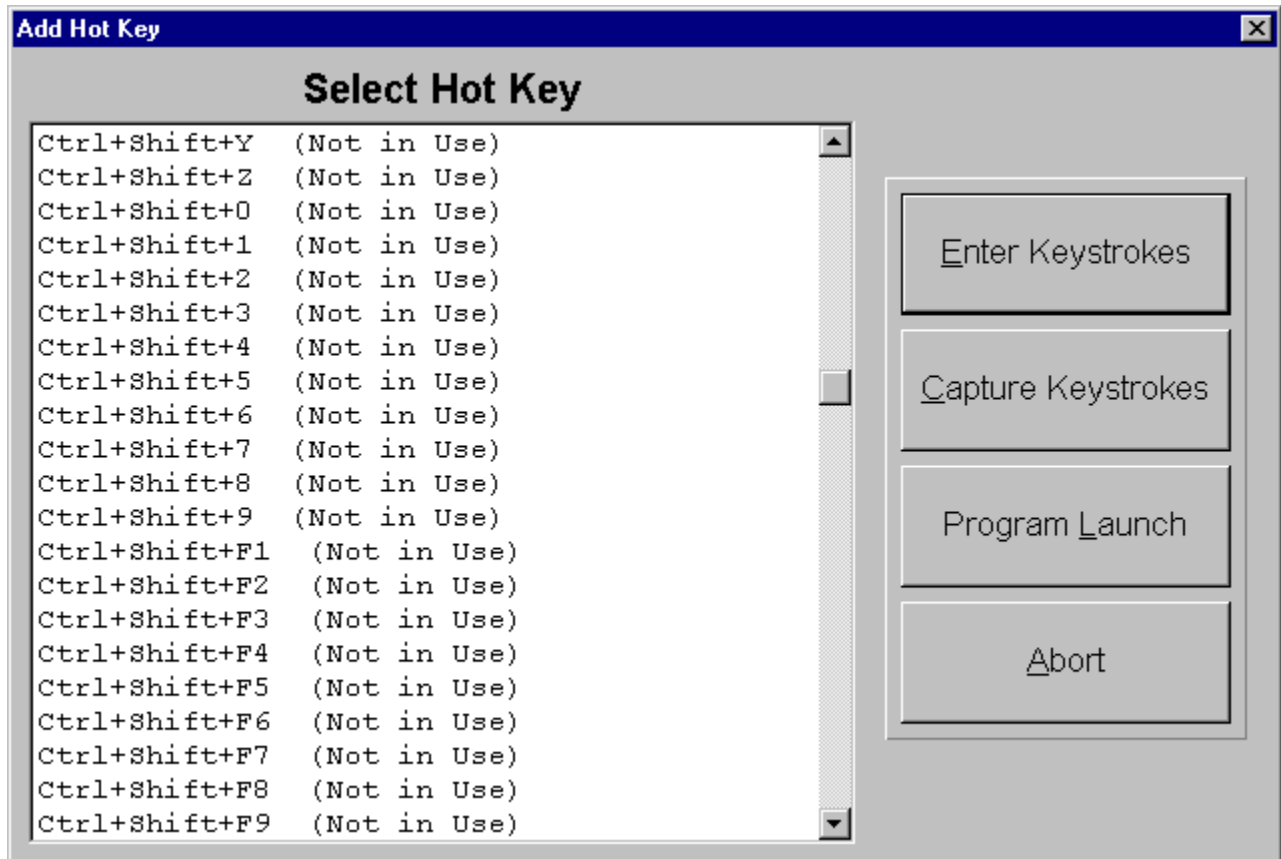
This is where the actual keystrokes are entered in which are assigned to the Hot Key. Simply type in the text desired. For keys which cannot be typed in, such as the ALT, TAB, etc keys, simply select the associated button for them and an entry will be made for them. They will appear in a special format.

This is the name of the hot key to which all keystrokes entered will be assigned.

Adding Hot Keys

By selecting the "Add Hot Key" from the Main Window or OPTIONS | ADD HOT KEY from the menu, you can choose to add and activate a new hot key. The Window below will appear and you can simply select (highlight) the hot key desired and either choose to enter keystrokes manually, start a keystroke capture process or associate a program to launch.

Click on an area for more information



All action is performed on the selected (highlighted) hot key shown in this list box. These actions include removing a hot key, copying one, moving one, disable/enabling one, entering new keystrokes, capturing new keystrokes or setting up a program to launch. If there are no current or active hot keys, then you will need to add one first.

Screen Size

Program Activate Key

Add Hot Key

Remove Hot Key

Copy Hot Key

Move Hot Key

Deactivate Hot Key

Enter Keystrokes

Capture Keystrokes

Program Launch

The "Abort" button aborts the process of adding a new hot key.

Using Time

The current time can be placed inside your text that is played back by your hot key. A variety of time formats are available. When selecting a time format, you will be presented with a list of available choices. This list along with a representation of the format is listed below. You may also specify to have all leading zeros in numbers not be shown.

hh:mm	15:04
hh.mm	15.04
hh,mm	15,04
hh:mm:ss	15:04:23
hh.mm.ss	15.04.23
hh,mm,ss	15,04,23
hh:mm am	3:04 pm
hh.mm am	3.04 pm
hh,mm am	3,04 pm
hh:mm:ss am	3:04:23 pm
hh.mm.ss am	3.04.23 pm
hh,mm,ss am	3,04,23 pm
hh:mm AM	3:04 PM
hh.mm AM	3.04 PM
hh,mm AM	3,04 PM
hh:mm:ss AM	3:04:23 PM
hh.mm.ss AM	3.04:23 PM
hh,mm,ss AM	3,04,23 PM
hh:mm	3:04p
hh.mm	3.04p
hh,mm	3,04p

The "Cancel" button allows you to abort the process of moving a hot key.

The "Cancel" button allows you to abort the process of copying a hot key.

The "Ok" button will complete the process of copying the hot key and return you to the Main Window.

This list box displays all the available hot keys that you can copy to. Simply click on the one desired and click on the Ok button and the copy will be made.

This is the name of the hot key from which the copy will be made.

The "Ok" button will complete the process of moving the hot key and return you to the Main Window.

This list box displays all the available hot keys that you can move to. Simply click on the one desired and click on the Ok button and the move will be made.

This is the name of the hot key from which the move will be made.

Keyboard Express allows for the system date and time to be added to your text that is assigned to hot keys. When you invoke your hot key, the then current date and time will be used and will be typed out. Many different format options are available for both the date and time.

Commonly Asked Questions

Where has Keyboard Express gone - I started it but I can't see it!

Keyboard Express runs as an "invisible" application. Once running Keyboard Express can be invoked by holding down the CTRL key and clicking the right mouse button.

I press my assigned hot key and nothing happens.

Text assigned to a hot key is not actually sent to your application until all the keys are released. See [Playing Back Keystrokes](#) topic.

I try to access a menu command using the ALT key, but Keyboard Express does not appear to play it back.

Some programs appear to interpret ALT keystroke sequences as something other than menu commands. This exhibits itself when certain menu commands work from Keyboard Express and other do not. To work around this problem, a double ALT (<ALT><ALT>) should be used. Two ALTs in a row is the equivalent of pressing the ALT Key and releasing it. Doing so activates the menu and the next letter will activate the appropriate menu option.

Will Keyboard Express work under Windows NT?

The 16 bit version of Keyboard Express will not run under Windows NT. However, the 32 bit version will run under Windows 95 and Windows NT.

Keyboard Express does not seem to work with my DOS programs.

Keyboard Express currently only works with Windows programs. You cannot call up Keyboard Express (CTRL-Right Mouse Click) while in a DOS program nor can you paste keystrokes into a DOS program.

I would like to include Keyboard Express in my startup menu, but do not wish it to appear upon starting up Windows.

Keyboard Express accepts a parameter which can be passed to it which will accomplish this. Place the parameter /HIDE after the program name.

I would like my macro to end with a space. Keyboard Express appears to lose trailing spaces on macros.

Keyboard Express will truncate trailing spaces on macros. To have trailing spaces, you will need to use the "Space" button on the keystroke entry window. This will place a <SPACE> command into the macro.

I would like to add extended characters such as a copyright symbol to my macro for playback. Is this possible?

No, this is not possible at this time.

License, Copyright and Disclaimer

Agreement

The use of this program indicates your understanding and acceptance of the following terms and conditions. This license shall supersede any verbal or written statement or agreement to the contrary. If you do not understand or accept these terms you must cease using this product immediately.

Copyright

This product is © Copyright 1996 by Insight Software Solutions, Inc. This product is protected by United States copyright law and various international treaties.

Disclaimer

This product and/or license is provided as is, without any representation or warranty of any kind, either express or implied, including without limitation any representations or endorsements regarding the use of, the results of, or performance of the product, its appropriateness, accuracy, reliability, or correctness. The entire risk as to the use of this product is assumed by the user and/or licensee. Insight Software Solutions, Inc. does not assume liability for the use of this product beyond the original purchase price of the software. In no event will Insight Software Solutions, Inc. be liable for additional direct or indirect damages including any loss of profits or other incidental or consequential damages arising from any defects, or the use or inability to use the software, even if Insight Software Solutions, Inc. has been advised of the possibility of such damages.

Restrictions

You may not use, copy, modify, translate, or transfer the software, documentation, or any copy except as expressly defined in this agreement. You may not attempt to unlock or bypass any licensing algorithm utilized by the program. You may not remove or modify any copyright notices.

The evaluation version of this product may be freely distributed. The license enabling file which disables the reminder screens, and that you receive with a full license to the product, may not be distributed by anyone without the prior written authorization of Insight Software Solutions, Inc.

License for usage

You have the non-exclusive right to use the program only by a single person, on a single computer at a time. You may physically transfer the program from one computer to another, provided that the program is only installed on a single computer at a time. Network deployment is only permitted if you have purchased licenses sufficient to cover the number of copies concurrently in use.

Back-Up Copies

You may make one copy of the software solely for "back-up" purposes. The backup copy must include any copyright notices contained in the original.

License Transfer

You may transfer the product to another party only if the other party agrees to all the terms and conditions of this agreement. If you transfer the program you must at the same time transfer any documentation and the back-up copy, or transfer any documentation and destroy the back-up copy. You may not retain any portion of the program, in any form, under any circumstance.

Terms

This license is effective until terminated. You may terminate it by destroying the software, the documentation and copies thereof. This license will also terminate if you fail to comply with any terms or conditions of this agreement. You agree upon such termination to destroy all copies of the program and of the documentation, or return them to Insight Software Solutions, Inc.

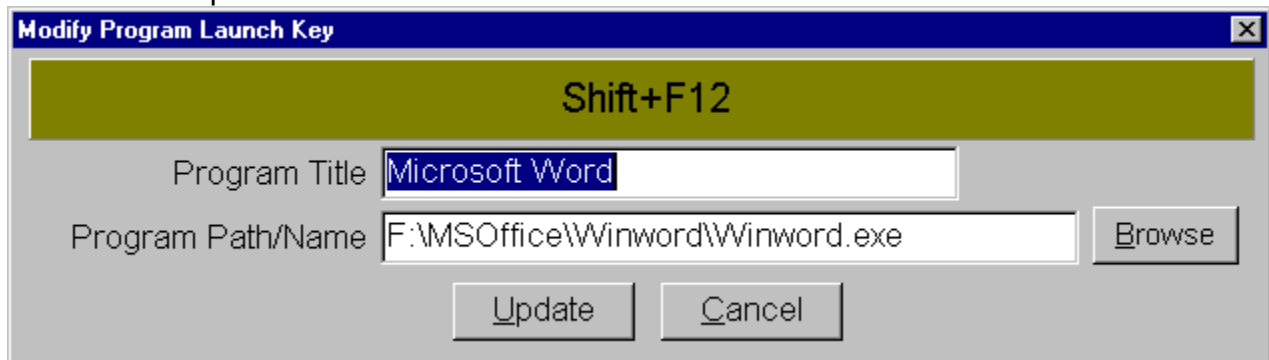
Other Rights

All other rights not specifically granted in this license are reserved by Insight Software Solutions, Inc.

Program Launch

Keyboard Express allows you to launch programs or documents with a hot key. The steps to setting this up are as follows:

1. Select a hot key from the available list from the Main Window or the Add Hot Key Window of Keyboard Express
2. Click on the Program Launch Button on the window.
3. The window below should now appear. You may enter a name that will remind you what program or document you are launching in the Program Title field.
4. Enter the path and name of the program in the "Program Path/Name" field or click on the Browse Button to search for the program desired.
5. Press the Update Button.



NOTE: You may place any type of file type as the Program Path/Name. As long as there is a file type association set up in Windows for the particular file type, the corresponding program will be loaded and the document specified will be loaded into it.

You may choose one of five ways to activate and display Keyboard Express. Selecting **OPTIONS | PROGRAM ACTIVATE KEY** from the menu of Keyboard Express displays five choices of activation keys. Choose the one desired for your personal preference.

You may temporarily disable or deactivate a Hot Key. You may do so by selecting the "Deactivate Hot Key" from the Main Window or OPTIONS | DEACTIVATE HOT KEY from the menu. If the hot key is already disabled, then the button and menu will indicate "ACTIVATE" instead of deactivate. Choosing this option will then reactivate the hot key. This option may be used for those times when a hot key may interfere with a particular program. Instead of deleting the hot key, you can deactivate it.

Selecting FILE | NEW from the menu of Keyboard Express allows you to create a new set of keyboard macros. Multiple sets of macros can be maintained. You may wish to maintain different sets of macros that you use with specific applications.

Selecting FILE | OPEN from the menu of Keyboard Express allows you to open another set of keyboard macros. Multiple sets of macros can be maintained. You may wish to maintain different sets of macros that you use with specific applications. You can also create a new set of macros.

Selecting FILE | PRINT HOT KEY LIST will allow you to print out the current list of active hot keys. This list can then be used for reference.

You can add timed delays to your keyboard macro. While in the modify hot key window, you select the DELAY button. This pops up a new window that allows you to enter in the number of seconds you would like to delay. Seconds can be in fractions using a decimal point. A maximum delay of 60 seconds is permissible. If you like, you can manually enter a delay into your keystrokes. The format to be used is <DELAY:xx.xx> where xx.xx represents the number of seconds used. Trailing and leading zeros must be used.

NOTE: Delay timing will delay for at least the amount of time specified. The delay works by continually checking to see if the specified time has elapsed. In the middle of the checking, any waiting or new windows commands are processed. If a window command that takes a bit of time is processed, then the delay may last longer than specified.

Keyboard Express allows for a pause to be placed in your text that is assigned to hot keys. When you invoke your hot key, it will begin to play back until the pause is hit. When the pause is reached, playback will stop and a new small window will appear indicating that your macro has been paused. You may then do whatever you like. At any time you may choose to either continue the playback or to abort out of the macro by clicking the appropriate button on the pause window.

