




## Introduction

This document describes each of the AddOns that are shipped with PowerLock Version 3.5.

To use AddOn files, simply place them in the same folder as your PowerLock application. They will be active the next time PowerLock is used.

To disable all AddOns, hold down the Shift key when you launch PowerLock.

AddOns have the ability to alter PowerLock in such a way that it can look completely different. Usually, you will notice a new button, or a changed button. Many AddOns will put special commands into special options menus. The  symbol represents an options menu.

PowerLock 3.5 includes the following AddOns:

*AutoLauncher*  
*AutoLogOn*  
*BookTools*  
*Hide*  
*IdleMore*  
*LastResort* \*  
*LogManager* \*  
*MasterPassword* \*  
*NeverEverShutDown*  
*OutToLunch*  
*PowerMessages*  
*PowerUsers*  
*RandomDesktop*  
*SaferShutDown*  
*SoundMessages*  
*SuperHelper*

\* can only be used by registered PowerLock users

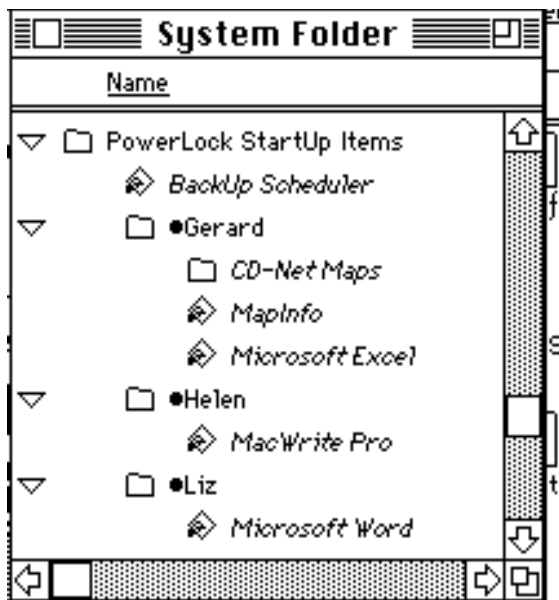
## AutoLauncher

This extends the functionality of the normal StartUp Items folder. When using AutoLauncher, the only item in the System StartUp Items folder should be an alias to PowerLock (and if you use StartUp Security, you should have no items at all in the StartUp Items Folder). Anything else you want launched at startup should be placed in a folder called 'PowerLock StartUp Items' within the System folder. You can place documents, sounds, folders, applications, etc. within this folder and they will be opened.

AutoLauncher works well with a User List. Simply set up folders with the same names as your users, prefixed with • (Option-8), and any items within those folders will also be launched at startup.

Note that AutoLauncher works with System 6, though it is limited to launching applications only.





### AutoLauncher Example

The example on the left shows a possible setup.

The BackUp Scheduler is run for everyone as it is contained in the main PowerLock StartUp Items folder.

Gerard has set up a folder to open at startup, as well as the MapInfo application and Excel.

Peter doesn't have a folder, so he will only get the BackUp Scheduler.

Helen wants MacWrite Pro at startup, but Liz prefers Microsoft Word.

*Notes: If you've been using SuperHelper to give you a StartUp Items folder, you should remove SuperHelper and replace it with AutoLauncher. Also, remember that PowerUsers provides settings for automatically launching applications and documents.*

## AutoLogOn

This is a powerful AddOn which makes use of System 7's advanced aliasing features to your benefit. It does not operate under System 6. To use AutoLogon, select from the Options menu on the Change dialog "Save AutoLogOn Settings". The next time you start PowerLock and enter a valid username and password (or just a password if single user), AutoLogOn will do the following:

- \* automatically establish all your network connections that existed when you saved the settings, prompting for passwords wherever necessary;
- \* mount any hard disks or other offline volumes that were online at the time the settings were saved;
- \* prompt you to insert any floppy disks that were online.

Each user of PowerLock has their own unique settings. AutoLogOn does not store network passwords so there is no security risk.

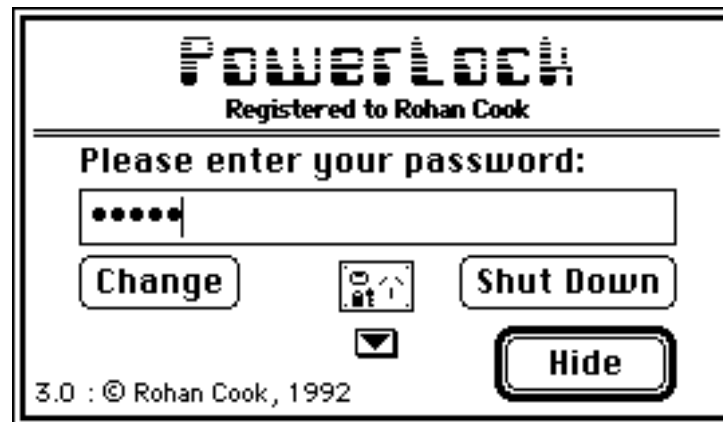
Each time you select "Save AutoLogOn Settings", your old settings are replaced. The SuperUser can also clear all AutoLogOn information from the Preferences dialog.

## BookTools

A simple AddOn designed solely for PowerBook or Macintosh Portable users. Currently it supports two options:

- \* it puts your portable to sleep after the TimeOut period has expired;
- \* it provides a Sleep option from the main PowerLock dialog.

## Hide



*Hide* is a simple AddOn that makes PowerLock remain active, ready & waiting for you to reactivate it. It requires either System 7 or MultiFinder under System 6. It is useful when you want to leave your Macintosh for a while.

When the *Hide* AddOn is active, the OK button changes to **Hide**. When you enter the correct password and click **Hide**, PowerLock closes its windows and returns you to the Finder. There are several ways in which you can then reactivate PowerLock:

- \* select it from the Apple menu (System 6)
- \* select it from the Applications menu (System 7)
- \* use the PowerLock FKEY (System 7 Only)
- \* use the PowerLock HotKey (from PowerLock Controls)
- \* double-click the PowerLock icon in the Finder

When reactivated, you will again be asked for a password. To completely Quit PowerLock, you need to select 'Quit PowerLock' from the Options popup menu.

**Hide** works with PowerUsers and the No Desktop option. Any users that have the No Desktop option active cannot quit from PowerLock.

### *Important:*

The actual name of the *Hide* AddOn is **~Hide**. Please do not change its name.

(Technical note: the main reason it is named this way is to ensure it is loaded last - all AddOns after *Hide* will not receive the aReqPWOK message)

*System 6 Users:* The PowerLock FKEY should not be used to reactivate the hidden PowerLock.

## IdleMore

IdleMore allows you to specify how much time you want background applications to have. It adds an item to the options menu on the Preferences dialog called "Set Idle Time...". You get to indicate the number of ticks you wish to allocate to background processes. This setting is stored so the next time you use PowerLock it will use your idle time setting. Set it to zero to restore it to defaults.

*(TechNote: PowerLock uses ModalDialog almost exclusively. IdleMore works by intercepting aReqIdle messages sent prior to each ModalDialog call and then calling WaitNextEvent with your specified sleep time)*

## Last Resort

**Note: This will only operate with Registered copies of PowerLock.**

Last Resort may come in handy if you forget your password. You will need to somehow place it into your PowerLock folder. Once there, PowerLock will prompt you for your registration information. You then enter any password and click the Change button to get access to the Change Password dialog.

LastResort works best without a UserList established. If you do have a UserList, you'll get a warning and PowerLock will still quit but you can't change the password. To temporarily remove the user list, drag the preferences file out of the preferences folder.

Be careful with this AddOn as it defeats the purpose of PowerLock! Make sure your PowerLock Registration

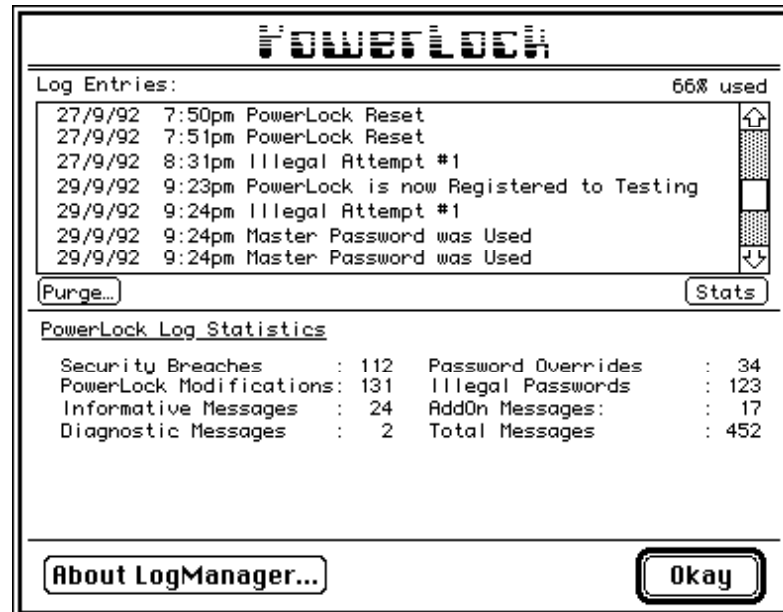


number is stored in a safe, secure place.

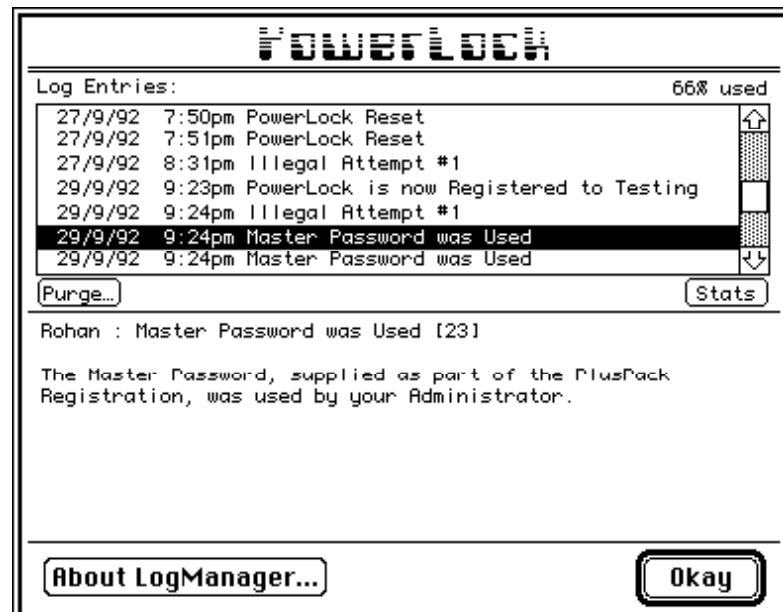


## LogManager

As the name implies, LogManager provides facilities for viewing and clearing the PowerLock log file. It also gives additional explanations for each of the messages in the log file. When the LogManager AddOn is in the same folder as PowerLock, you can double-click on the Log File to activate the LogManager. You can also click the LogManager button in the Preferences dialog. This is what the initial display looks like:



You can then click on any listed message to get a detailed explanation as in the following:



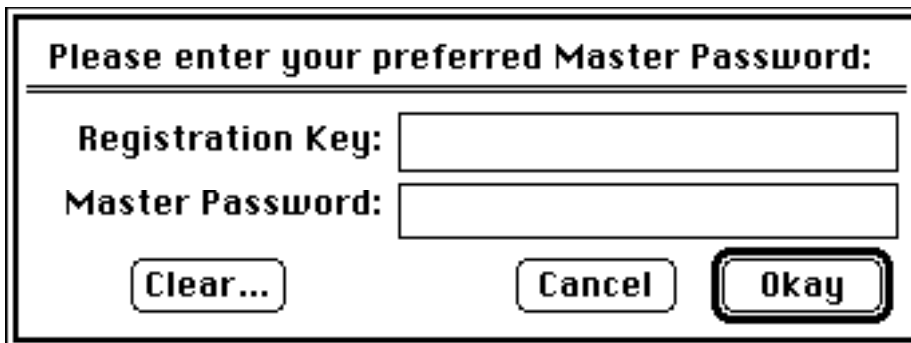
When the % used starts to get near 100% you should purge the log file. The **Purge...** button allows you to clear out the entire log file - you'll be asked to confirm your choice. The Stats button simply redisplay the statistics that were shown when the LogManager opened.

If your log file is quite large, it may take a while to analyse it. If it is above 5% capacity a progress meter will be displayed, giving you an estimate of how long it will take to complete.

The LogManager requires a Registered copy of PowerLock to operate. However, it provides a demonstration mode for unregistered users - only the first ten log entries are displayed. LogManager is limited to a log file size of 500 lines.

## MasterPassword

MasterPassword is only available to registered PowerLock PlusPack users. It enables a corporate administrator to set a common master override password for all PowerLock copies used in the organisation. You select MasterPassword from the Options menu on the Preferences dialog. The following dialog box appears:



The dialog box has a title bar that says "Please enter your preferred Master Password:". Inside, there are two text input fields. The first is labeled "Registration Key:" and the second is labeled "Master Password:". Below these fields are three buttons: "Clear...", "Cancel", and "Okay". The "Okay" button is highlighted with a thicker border.

Enter the registration key you have used on this particular copy of PowerLock and enter a preferred Master Password. You will be asked to confirm this password.

To remove the Master Password, you must still enter your Registration Key but select **Clear...** instead of **Okay**. To use the Master Password, enter it into the password section of the main dialog box. Leave the username section blank.

*Note that the MasterPassword AddOn is NOT required to support the use of the Master Password. It is only required if you want to change the Master Password.*

## NeverEverShutDown

This simple AddOn does exactly what the name suggests - it prevents PowerLock from shutting down. One of the main security features of PowerLock is its ability to shut down your Macintosh if someone tries to gain access. Hence, it is not recommended that you use NeverEverShutDown unless for a specific purpose as it will reduce the effectiveness of PowerLock's security.

The effect of NeverEverShutDown is the following:

- \* it puts no limit on the number of incorrect password attempts,
- \* it disables the Seconds before Shut Down option,
- \* it removes the Shut Down button from the main dialog,
- \* it intercepts any other AddOns' attempt to Shut Down.

To use it you first need to change your Preferences. If you see a message referring you to the NeverEverShutDown instructions, it is because you haven't changed the Preferences as per these instructions.

Open PowerLock without NeverEverShutDown being in the PowerLock folder and go to your preferences. Disable the Seconds before Shut Down option and then activate Unlimited Password Attempts.

Now place NeverEverShutDown in the PowerLock folder and open PowerLock. You'll notice that the Shut Down button has disappeared, and you'll also notice that the Preferences dialog has a few items missing. To disable NeverEverShutDown, simply remove it from the PowerLock folder and reset your Preferences.

## OutToLunch

OutToLunch is a simple screen saver. It merely puts up a user-defined message in a black box and moves it about the screen, slowly erasing everything on the screen. The message defaults to 'Out to Lunch' but can be easily specified and is saved between sessions. The delay before the message appears is taken directly from the Preferences/TimeOut Screen option.

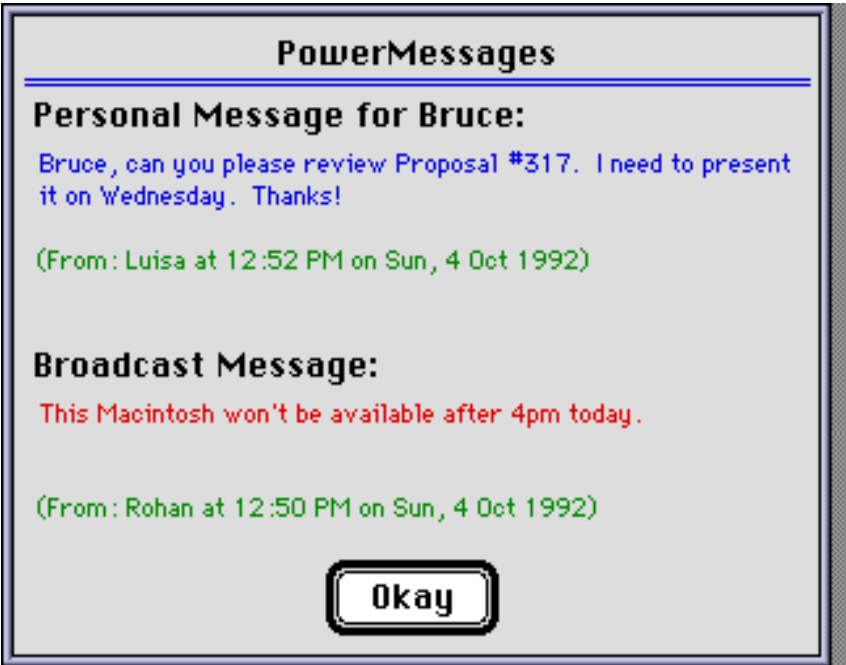
To use OutToLunch, simply place it in PowerLock's folder and ensure that you have enabled the TimeOut screen option in the Preferences dialog.

You can change the TimeOut message from the main PowerLock dialog's options menu. Note that if you have PowerLock's Shut Down option enabled, Out to Lunch will not prevent the shut down from occurring after the specified time.

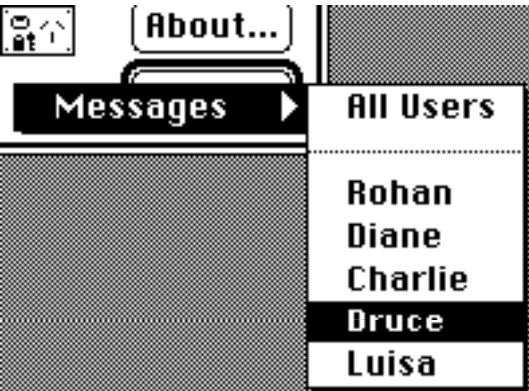
# PowerMessages

A simple method of leaving a message for other users of your Macintosh. It also provides a means for the Macintosh administrator to leave a broadcast message to all users.

Messages are displayed at startup, once you enter a correct username and password. If there is no personal message for you, and there is no broadcast message, you won't see a message display. If a broadcast message is waiting, the main PowerLock dialog will display "Broadcast Waiting..." (but note that you may have already read the broadcast in which case it won't be displayed). The following is an example of both a personal and broadcast message waiting:

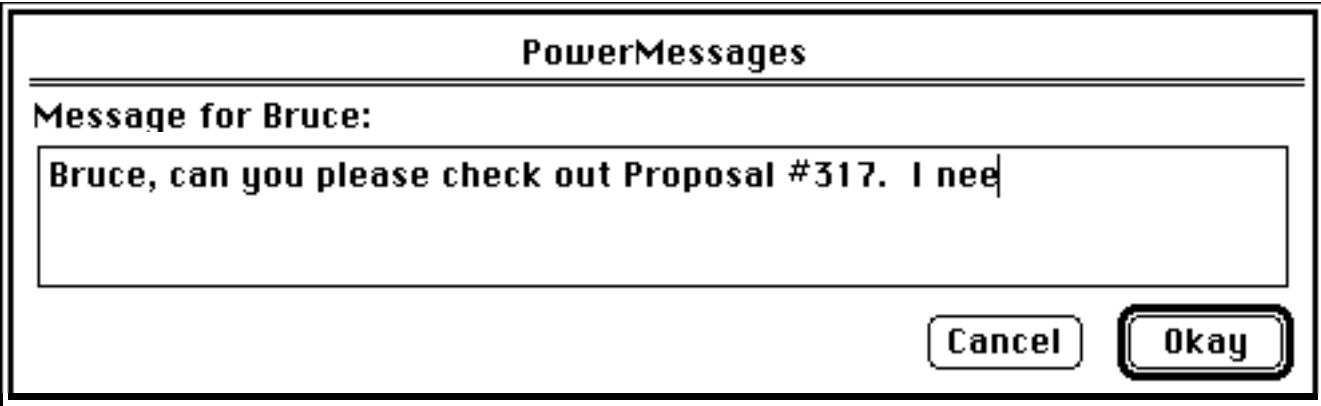


To leave a message for someone, go to the **Change** dialog and select the person you want to leave a message for from the Messages sub-menu, as in the following:



You will then be asked for the message you want to leave. If there is another message waiting, it will be displayed.

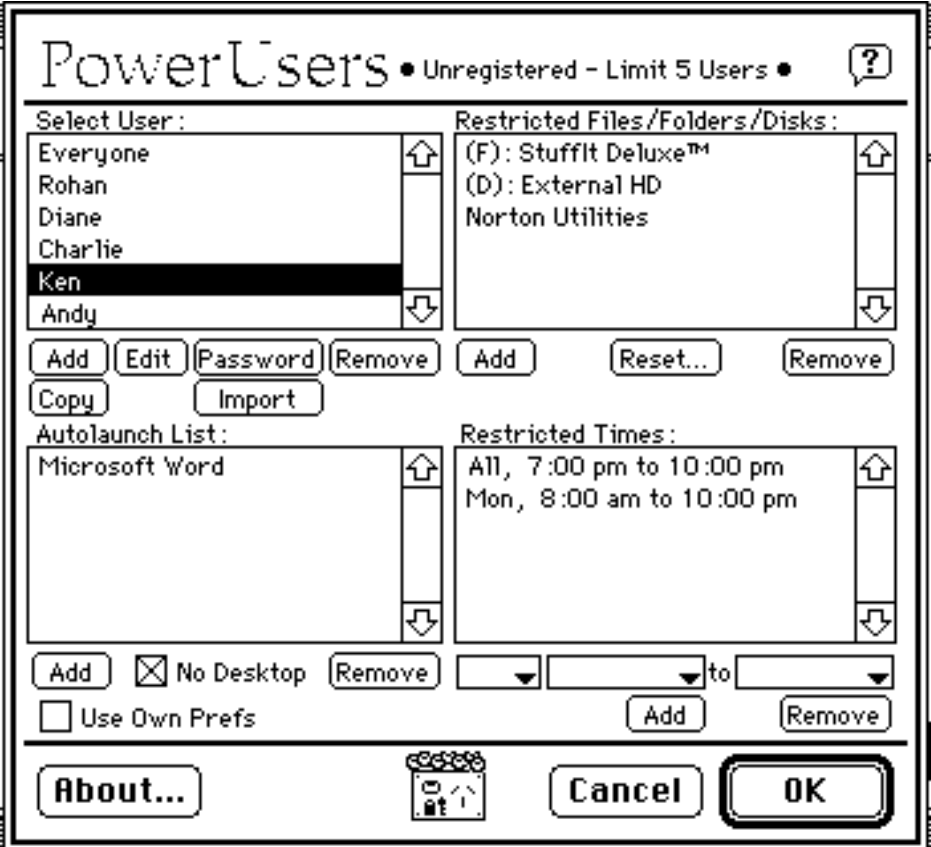




*Notes:*  
PowerMessages does not operate unless a userlist is already established in PowerLock.  
Each person can have only one message waiting.  
Both Personal and Broadcast messages are only displayed once.  
Messages are saved in the Preferences file.

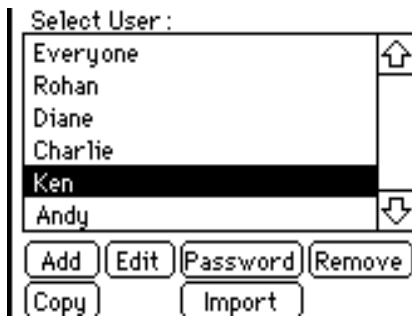
**PowerUsers**

PowerUsers is a powerful tool for those people who share their Macintosh with others. It continues the concept of the "SuperUser" - the person who sets access rights etc. The following diagram shows how PowerUsers looks when selected. It is accessed from the Preferences dialog - the User List button becomes "PowerUsers" and the standard PowerLock User List is no longer available.



First, a note about the Save button. Whenever the button says Save, you have made some changes for the currently selected user which have not yet been saved. You can cancel those changes simply by clicking Cancel. Whenever you select another user, your changes for the previous user are automatically saved and the Save button changes to OK.

Now, let's look at each area of the dialog in turn.

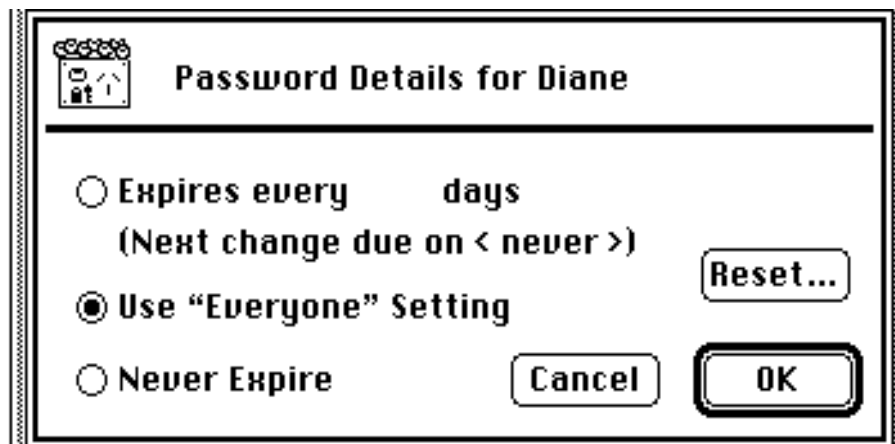


This is where you add, change or remove users. It functions as the replacement to the standard PowerLock User List dialog. To add a new User, simply click the **Add** button and fill in the new user name. The password is automatically set to the same as the username, including the mix of capitals and lowercase letters that you specify. To change a user name, click on it and select **Edit**. The password will automatically be reset to the new name.

**Remove** deletes the user name from the list. The entry will initially show as • DEL • but will be removed once you save your changes (the last user in the list takes its place when it is saved). The **Copy** button lets you copy all the profile information for a particular user to a new user. In this way, you can save yourself time by setting up the standard profile and copying it however many times you need it. You can then make any minor modifications per user. When you click **Copy** a new user is created called “Copy of <username>” - eg. if the **Copy** button is clicked now, you’ll get a user called *Copy of Ken*. Simply change its name to whatever you require.

The **Import** button lets you import the AppleShare user list into the PowerLock user list. Currently it cannot distinguish between a group name and a user name. Also, note that if you are using System 7’s File Sharing, it may take some time for File Sharing to start up and the button may not function properly the first time PowerLock is run. Simply quit and run it again once Sharing has started up.

**Passwords:** Clicking on **Password** brings up the following dialog:



PowerUsers incorporates the ability to force a user to change their password every so often, in order to enforce good security habits. Normally you’ll leave “Use Everyone Setting” selected. This means that for this particular user, password expiry settings are the same as those that apply to Everyone. Selecting “Never Expire” prevents the reminders. Selecting “Expires every” allows you to enter the number of days between password changes. It is best to set password options on a global level first, by completing this dialog for the Everyone user.

The **Reset...** button can be used if someone forgets their password. It resets their password to the same as their username, including upper and lower case combinations.



The Restricted Files/Folders/Disks box allows you to specify a set of files, folders and disks (System 7 Only) which the currently selected user cannot access. Click the **Add** button to add a new file, folder or disk. You will see a standard file selection dialog with the two buttons **File** and **Folder**. Click **Folder** when a folder name is highlighted and click **File** when you have highlighted a file name. Folders are shown with (F): before them in the list. To remove an entry from the list, click the one you want to remove and click **Remove**. Whenever the specified user logs in, the listed files and folders will be hidden from them. They will be restored as soon as someone who is permitted to access them logs in.

Folders may appear in this list with a message beside them, such as "< Disk not available >". This is usually caused by not having the disk or AppleShare volume mounted, or the folder has been deleted.

If you suspect that some files or folders have gone missing, you can restore them by clicking on **Reset...** This will restore all files and folders that PowerUsers knows about. System 7 users can also restore all hidden files and folders on all available disks and volumes, regardless of whether PowerUsers was used. Simply cycle through the listed files responding to the questions as you go. You can also reset a single file - simply option-click the Reset button.

System 7 users can also restrict disks and volumes. By clicking Add, displaying the desktop in the Standard File dialog, selecting a disk/volume and clicking "Folder", you will add a disk entry to the restrictions list. Disks, partitions and AppleShare volumes are shown with (D): before them. The affect is a little different - PowerUsers unmounts any restricted disks/volumes once a valid password is entered.

You can also protect partitions in this manner, or by placing them in a restricted folder.



PowerUsers can automatically launch a list of applications that you specify. This is in addition to System 7's StartUp Items folder, SuperHelper's simulated StartUp Items folder for System 6 users, and the AutoLaunch folder setup. Each user can have a separate list of applications. System 7 users can also include documents in the list and PowerUsers will launch the application that created the document along with the document. Click on **Add** to add a new application or document and click **Remove** to remove them from the list.

The **No Desktop** option (which requires System 7) allows you to remove access to the Finder. You can only select this option if you have at least one application in the AutoLaunch List. By using this option in conjunction with **Hide**, you can have a setup where a person only has access to the applications you specify, and they are returned to PowerLock when they quit their applications.

Because **No Desktop** quits the Finder, it does have some side effects. In particular, a couple of AddOns are prevented from operating - these are SafterShutDown, AutoLauncher and the startup items feature of SuperHelper.

Restricted Times:

All, 8:00 am to 12:00 pm	↑
Sun, 12:00 am to 12:00 pm	
	↓

Sun 12:00 am to 12:00 pm

Add Remove

You can limit what days and times each user can access your Macintosh. To add a restricted time, first pop up the day menu by holding down the mouse over the first box with the popup triangle. Select All if you want the restriction to apply to all days of the week or select the particular day you require. Then pop up the starting time menu, select Morning or Afternoon and choose the appropriate time. Do the same for the second time box. When you are satisfied with the entries in the boxes, click **Add** to add it to the time list.

If the person tries to log in during a time period that is restricted, they will receive a message asking them to come back. For instance, if Ken tries to log in at 9:30pm on any day he will be told that he should come back after 10pm.

#### ☒ Use Own Prefs

This option lets the specified user establish their own set of Preferences. They will have full access to the Preferences dialog in PowerLock, except they will not be able to get access to the PowerUsers dialog. Initially the Preferences will be the same as the main PowerLock preferences. However, whenever this user saves the Preferences changes, they will be updating only their own copy. Use this option cautiously.

#### *A note about **Everyone**:*

To save you entering the same information for every single user, you can establish some defaults simply by selecting the user, Everyone. All options you select for Everyone will apply to all users. You then only need specify additional restrictions as necessary.

#### *PowerUsers Limits:*

Maximum Users: 99

Per User -

Maximum Protected Files/Folders:	20
Maximum Autolaunch Apps/Documents:	10
Maximum Time Ranges:	10

*Note: PowerUsers limits have been set arbitrarily in order to conserve memory. If these limits cause you problems, please contact the author who can issue a special release with the limits that you require.*

## RandomDesktop

*Note: Requires Color QuickDraw*

This simple AddOn lets you have a different PowerLock Desktop pattern every time PowerLock is launched. Place it in the same folder as PowerLock to have it do its stuff.

RandomDesktop includes three sample desktop patterns. You can add to these patterns by adding 'ppat' resources to the RandomDesktop AddOn file.

You can also have a separate file full of desktop patterns. Just name it "PowerLock Desktops" and include it in the same folder as PowerLock.

The best way to use RandomDesktop is as follows (System 7 Only):

1. Create an alias to an existing wallpaper or pattern file. A good file to alias is "Before Dark"™
2. Name the alias "PowerLock Desktops" and store it in the same folder as PowerLock
3. Put RandomDesktops in the same folder as PowerLock.

Now RandomDesktop will automatically select a different desktop from the file you selected. If you want to keep a particular pattern as your permanent desktop pattern, simply remove RandomDesktop once your favourite pattern has been displayed. To restore the desktop to its default, choose Default Desktop from the options menu on the Preferences dialog.



Note that RandomDesktop only affects the PowerLock Desktop - it does not change the normal Finder desktop.

## SaferShutDown

*Note: For System 7 Users Only*

PowerLock, as supplied, shuts down the Macintosh after three unsuccessful password attempts, after a specified period of inactivity, or when someone selects the Shut Down button. PowerLock takes control of the Shut Down process and guarantees that the Macintosh will shut down immediately. A side effect is that, if you have any open applications with unsaved work, the unsaved changes will be lost. The SaferShutDown AddOn has been supplied to alleviate this side effect.

SaferShutDown works by simply asking the Finder to take control of the Shut Down process. In this way, each application is closed and, if there are any unsaved documents, you will be prompted to save them. Because the Finder is handling the Shut Down, you won't hear PowerLock's Shut Down sound. The Shut Down will be recorded in the log as a 'Safe Shut Down'.

Why not use SaferShutDown all the time? Because the Finder's Shut Down process can be temporarily postponed simply by selecting Cancel when prompted to save any changes. The Macintosh will eventually shut down but it gives someone access to any open applications and therefore to documents on your hard disk. SaferShutDown is most useful when used in conjunction with Hide.

*Note: SaferShutDown requires the Finder to be active. For this reason, it is incompatible with the "No Desktop" option of PowerUsers*

## SoundMessages

*Note: To record messages you will need a suitable sound input device.*

SoundMessages is an easy way to leave voice messages for different users of the one Macintosh. It works in the same manner as PowerMessages. You select the user from the Options menu on the Change dialog and you're then presented with the standard sound recording dialog. Click the Record button and speak into the microphone as normal. When you click Save, the message is then stored for later recall by that user.

When that user next logs in, they will get a dialog box as in the following



**Delete:** Deletes the message. No warning is given. For broadcast messages, only available to SuperUser.

**Save:** Saves the message as a System 7 double-clickable sound file. You'll be asked for the filename.

**Keep:** Postpones making a decision about this message. It will be presented again the next time you log in. This button is labelled "Skip" for broadcast messages.

**Play:** Plays the message. To play it again, simply click this button again.

**Command-0 :** Set the sound volume. You can only do this when the message has finished playing. The volume will be restored after all messages have been played to whatever it was when PowerLock first started.

Normally, messages are recorded using the "Good Quality" standard. You can select higher quality levels by holding down the specified key when selecting the username from the messages menu.

**Option** Better Quality

**Shift** Best Quality

Voice messages can take up a lot of memory and disk space. You can get more out of SoundMessages by:

1. Increasing PowerLocks' memory allocation to, say, 1Mb if possible. This will increase the maximum size of a single message.



2. Not using better or best quality recording as it takes up to six times the space as good quality.
3. Asking users to limit the length of recordings, and to delete them once they've been listened to.
4. If users want to keep specific messages, encourage them to save them as System 7 sound files.

Sound messages are stored within the SoundMessages AddOn so its file size will vary and could grow quite large if there are long messages, or a lot of users or a lot of outstanding messages.

## SuperHelper

SuperHelper has been included with this PowerLock release in order to provide an easier means of establishing SuperSecurity options, particularly Finder Rename.

Both SuperHelper and the StartUp Security options of PowerLock are likely to be replaced during 1994 with PowerLock Controls, a new control panel currently in development.

SuperHelper has been supplied to assist with a few of the more difficult parts of PowerLock.

The features of SuperHelper that currently operate are:

- \* assistance with installation of the Finder Rename option
- \* automatic launching of the StartUp Items folder, which Finder Rename usually prevents - this includes the opening of any folders, documents, sounds etc.
- \* provision of a StartUp Items folder for System 6 users. Put a folder called StartUp Items inside your System folder, then whatever applications are contained in the folder will be automatically launched when you finish with PowerLock.
- \* unlocking disks (and locking disks in registered versions)

If you use SuperHelper primarily for the StartUp Items features, then please try AutoLauncher instead.

SuperHelper is reasonably straightforward. When active, the SuperSecurity button on the Preferences dialog changes to **SuperHelper...** and when you select it you get a different dialog. The option "Enable or Disable SuperSecurity Settings" merely takes you to the standard SuperSecurity dialog. The second option helps you install Finder Rename. The Options menu allows you to lock or unlock any online disk or volume. Locking a disk works only with Registered copies of PowerLock, but unlocking works on all copies. Take care when locking your startup disk as this may cause your System file to become "unblessed" and you may not be able to boot from the disk.

## PowerLock Developers Kit

This kit enables you to write your own AddOns for PowerLock. All you'll need is THINK Pascal™ or a similar Pascal development environment. C Programmers should be able to use the kit with only minor changes.

The Developers Kit includes a full reference manual to the AddOn Technology Applications Programming Interface (API). It includes a Pascal interface file for handling PowerLock messages and callbacks. Sample source code of some released AddOns is also provided.

If you're interested in using the Developers Kit, please contact the author via electronic mail.