

# Contents

## What is Drag And Zip

- [Program Description](#)
- [Installing Drag And Zip](#)
- [Install options](#)
- [Uninstall options](#)
- [Installing](#)

## Using Drag And Zip

- [Creating a Zip File](#)
- [Changing Drag And Zip's settings](#)
- [Dragging and Dropping Directories](#)

## Using Zip View: the Drag And Zip Zip File Viewer

- [Viewing Zip Files](#)
- [Type To File](#)
- [Tagging Files](#)
- [View](#)
- [Delete](#)
- [Launch](#)
- [Extract](#)
- [Working With GZ Files](#)
- [Scan](#)
- [Check Out](#)
- [Open \(File Menu\)](#)
- [Exit \(File Menu\)](#)
- [Sort \( Main Menu Bar\)](#)
- [Make EXE \(Options Menu\)](#)
- [Convert to ZIP\LZH \(Options Menu \)](#)
- [Fonts \(Options Menu\)](#)
- [Using Zip View without File Manager](#)
- [Changing Zip View's Settings](#)
- [Using Zip View with WWW Browsers](#)

## Fileman Launcher

- [Using Fileman Launcher](#)

## Help

- [Getting Help](#)

## Program Description

Drag And Zip is a set of utilities that makes Windows 3.1 file manager into a file manager for creating and managing ZIP, LZH and GZ files.

With its built in routines to zip and unzip files, Drag And Zip makes it very easy to compress files into Zip files and to extract files from Zip files from any Windows file manager that supports "Drag and Drop".

Drag And Zip also supports use of your copies of PKZIP, LHA and GUNZIP, to manage compressed files.

To compress a file with Drag And Zip you merely "drag" files from the file manager and "drop" them on the Drag And Zip icon, fill out a dialog box with the filename and destination directory, and Drag And Zip will make a Zip file out of the selected files.

Viewing the contents of a ZIP, LZH or GZ file is as easy as double clicking on its listing in file manager or dragging it to the Drag And Zip icon. Drag And Zip's ZIP file viewer, Zip View, will automatically be loaded and will show you the contents of the compressed file. You can tag any group of files in Zip View for extraction or deletion. You can view any file with Zip View's built-in file viewer or the file viewer of your choice. You can temporarily extract any file from the compressed file and run it if it is a program, or run the program associated with it if it is a data file. If you make modifications to the extracted file, you will also have the opportunity to replace the older file currently in the compressed file with the modified one. You can also make self-extracting archives.

Drag And Zip has a built-in virus scanner which you can use to scan the files in the compressed file for possible viruses.

In addition, there is also a check out feature where you can temporarily extract the files from a zip file and give them their own program group to "check them out".

Also part of the Drag And Zip utilities is Fileman Launcher. Fileman Launcher installs as a file manager extension and runs Drag And Zip every time you run Windows File Manager or any file manager that supports file manager extensions. When you exit File Manager, Drag And Zip will exit automatically at the same time. Fileman Launcher adds its own menu to File Manager. You can use this menu to zip files instead of dragging them to the Drag And Zip icon. You can also add other programs to be run with File Manager through the Fileman Launcher menu.

To use Drag And Zip you need to be running Windows 3.1 or better. You will also need a copy of ZIP2EXE.EXE if you want to make self-extracting ZIP files.

This version of Drag And Zip is designed to be compatible with PKZIP version 2.04 as well as version 1.1. Any other versions of PKZIP may not work properly. To use Drag And Zip to build and extract LZH files, you must have a copy of LHA.EXE. Drag and Zip will not work with LHARC.EXE. You will need a copy of GUNZIP if you want to work with GZ files in Drag And Zip.

Drag And Zip is specially designed to link in with your Internet browser and allow you to easily manage zip files from within Mosaic, Netscape and other popular browsing programs

## Installing Drag And Zip

Installation of Drag And Zip and Zip View is very easy with the setup program provided. From Program Manager, choose "File" from the menu bar and then choose "Run" from the pull down menu. In the Run dialog box, type the full path where the files are, and the program name DZSETUP.EXE. For example, if you were installing from drive A:, you would enter "A:\DZSETUP.EXE". If you were installing from the "DZ" directory of drive C:, you would enter "C:\DZ\DZSETUP.EXE".

The DZSetup program gives you two install and two uninstall options.

## Install options

1. You can install Drag And Zip with Fileman Launcher. Fileman Launcher installs as a file manager extension and runs Drag And Zip every time you run File Manager. Fileman Launcher will also keep Drag And Zip's icon uncovered when you are working in File Manager. Some desktop programs like Norton Desktop load file manager extensions every time they load, so if you are using Fileman Launcher with Norton Desktop, Drag And Zip will run every time NDW runs.
2. You can install Drag And Zip without Fileman Launcher. Without Fileman Launcher, you will have to run Drag And Zip manually when you want to use it.

## Uninstall options

1. You can remove Fileman Launcher. This option will remove the line from your WINFILE.INI that runs Fileman Launcher whenever you run File Manager.
2. You can completely remove the Drag And Zip installation from your computer. Do not use this option to remove a previous installation of Drag And Zip. It can only be used to remove a copy of Drag And Zip that was installed with this installation program.

# Installing

When you use the DZSetup program to install Drag And Zip it will first ask you which drive and directory you would like to install Drag And Zip to. If the path that you enter is different from the path you are installing Drag And Zip from, all files will be copied over to the new path. If they are the same, the installation program will assume that you only want to make modifications to a currently installed version of Drag And Zip, and not try to copy over the files.

DZSetup will then ask you for permission to add lines to the "extensions" section of your "WIN.INI" file so Windows file manager will know to run Zip View when you double click on a ZIP file a GZ file or an LZH file.

If you choose not to have "WIN.INI" modified, you can still run Zip View from its icon in Program Manager and drag files to it or use Zip View's "File" menu to load ZIP files.

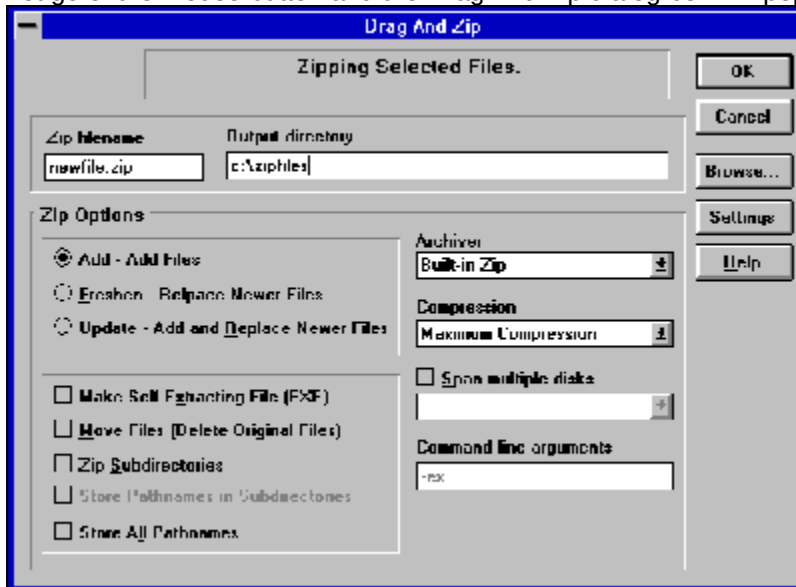
The DZSetup program will then create a program group called Drag And Zip and put the Drag And Zip, Zip View and DZSetup icons in it.

Because Drag And Zip has built-in zipping, unzipping and virus scanning, you can use it immediately without having to enter the paths of external zip and scanning programs. In addition, Drag And Zip will search your path to find a copy of LHA and GZIP if you wish to use these programs. If you want to enter the name of your World Wide Web browsing program or specifically enter the paths of the other programs, you can have DZSetup present you with a dialog box to enter this information. You can also modify this information from within Drag And Zip itself by going choosing the "Settings" menu.

# Creating a Zip File

When you run Drag And Zip it will appear as an icon at the lower lefthand corner of your computer screen. You can move the icon to a convenient place and it will remember its position. When you want to create a Zip or LZH file, run File Manager or any file manager that supports Drag and Drop, and tag the files that you want to zip. Then hold the mouse down on one of the tagged files. The mouse cursor will become a white rectangle with a "+" on it. Move the mouse without taking your finger off the left button to the Drag And Zip icon. While you are moving the mouse, the cursor will become a circle with a slash through it. When the cursor is over the Drag And Zip icon, it will once more become a white rectangle with a "+" on it.

Let go of the mouse button and the Drag And Zip dialog box will pop up.



Zip Dialog Box

## Zip Filename

In this field you enter the name of the zip file that you want to create.

## Output Directory

Enter the directory where you want the zip file to be created. If you are unsure of the directory name, you can use the browse function to find it. If you enter a non-existent directory, Drag And Zip will give you the option to create it.

## Add

This will create a new zip file or add files to an existing zip file.

## Freshen

This will only replace files in an existing zip file with those selected files that are newer than the files in the zip file.

## Update

This is like Freshen but in addition to replacing existing files with newer files, it will also add the files that aren't already in the zip file.

## Archiver

- Built-in Zip This option will create a PKZIP version 2.04G compatible zip file.
- PKZIP. This will cause Drag And Zip to run your copy of PKZIP
- LHA. This will cause Drag And Zip to run your copy of LHA.

## Compression

The possible choices will vary depending on what version of PKZIP or LHA you are running.

### **Make Self Extracting File (EXE)**

When this option is checked, Drag And Zip will use your copy of ZIP2EXE to make your zip file into an EXE file. You can then run the EXE file to automatically extract all the files. This option won't be available unless you have a copy of ZIP2EXE.EXE. This program comes with PKZIP. After creating the EXE file, Drag And Zip will delete the zip file. If you are compressing files with LHA, no extra program is necessary to create an EXE file.

### **Move Files**

This option will delete the original files after they are placed in the zip file. This option is useful when you want to make more space on your hard disk by zipping files.

### **Zip Subdirectories**

This is equivalent to the "-r" argument with PKZIP. When you choose this option, Drag And Zip will not only zip the files in the directories that you dragged to it, it will zip any sub directories that are in the directories and any sub directories in the sub directories, compressing all the files in the directory branch.

### **Store Pathnames in Subdirectories**

This choice is equivalent to the "-p" option in PKZIP. This option won't save path names of the files in the directories that you dragged, but it will save the path names of the files in the sub directories of the directories that you dragged. This option won't be available if you are using LHA.

### **Store All Pathnames**

This option will save the path names of every file that you are zipping.

### **Span Multiple Disks**

PKZIP version 2 and Drag And Zip's internal zipping allows you to zip files onto multiple floppy diskettes. You select the "Multiple disks" check box to enable this option. When you are zipping to multiple disks, you also can specify if the disks that you are zipping to are to be formatted or just erased, and you can specify if they are high density or low density. You can choose any of these options from the drop-down combo box which becomes active when you check the "Multiple disks" box.

### **Command Line Arguments**

If you are using the external archive programs PKZIP or LHA the command line arguments field will be available. In this field you can enter any PKZIP or LHA command line argument. If you are unfamiliar with the argument needed to select a special option you can click on the help button and you'll find a complete command line reference in the help file.

When you are all finished and click on "OK", Drag And Zip will create the compressed file. If you didn't enter an extension for the output filename, Drag And Zip will append a "ZIP", "LZH" or "EXE" to it depending on what compression program and what options you have chosen.

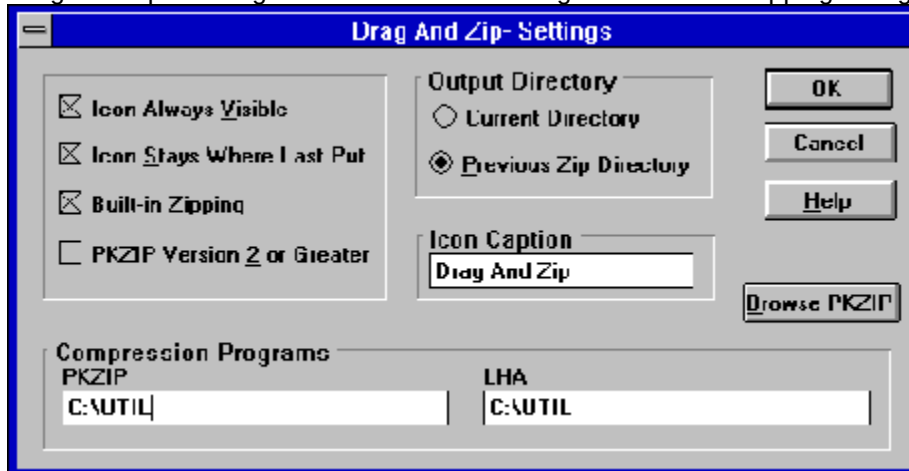
If you specify an output directory that doesn't exist, Drag And Zip will let you know, and give you the option to create the directory.

The options that you entered into the dialog box will be saved and will be the default the next time you make another archive.



# Changing Drag And Zip's settings

If you want to change any of Drag And Zip's settings you don't have to rerun the DZSetup program. All you have to do is click on Drag And Zip's icon when it is running and a menu will pop up. Choose the "Settings" option from the menu and you will be presented with a dialog box where you can modify all of Drag And Zip's settings. There is also a settings button in the Zipping dialog box.



Settings Dialog Box

## Icon Always Visible

Checking this option will make Drag And Zip's icon visible at all times. This is not necessary if you are running Drag And Zip with Fileman Launcher, as Fileman Launcher will always uncover DZ's icon when you are working in File Manager.

## Icon Stays Where Last Put

Checking this option will have Drag And Zip remember the position of its icon when you last ran it. This is not necessary if you are running DZ with Fileman Launcher

## Built-in Zipping

When checked, Drag And Zip will use its built-in zipping to make a zip file.

## PKZIP Version 2 or Greater

It's important that this option be checked if you are running with PKZIP version 2.04, and that it not be checked if you are running with PKZIP version 1.1. That way Drag And Zip can pass the proper commands to PKZIP when it is running it. No other versions of PKZIP are currently supported. When you choose your PKZIP directory, Drag And Zip will try to determine this automatically.

## Output Directory

You have two choices of the default output directory that Drag And Zip will enter into the zip dialogs. One is the current directory, which is the directory that you dragged the files from. The other is the directory that you used the last time that you used Drag And Zip.

## Icon caption

Many users have asked if they could shorten or eliminate the caption under the Drag And Zip icon when it is running. Now you can. Just enter whatever you want in this field and it will appear below Drag And Zip's icon when you run it. Unfortunately, if you choose to make this field blank, Windows will put a blank line under the icon rather than not having a caption at all.

## PKZIP Location

This should contain the directory where your copies of PKZIP and PKUNZIP are. It is not necessary to fill this out if you are using the built-in zipping and unzipping. You will need to fill this out if you want to make self-extracting zip files and ZIP2EXE is not on your path. When this field is active, you can use the browse button to find the PKZIP directory.

## LHA Location

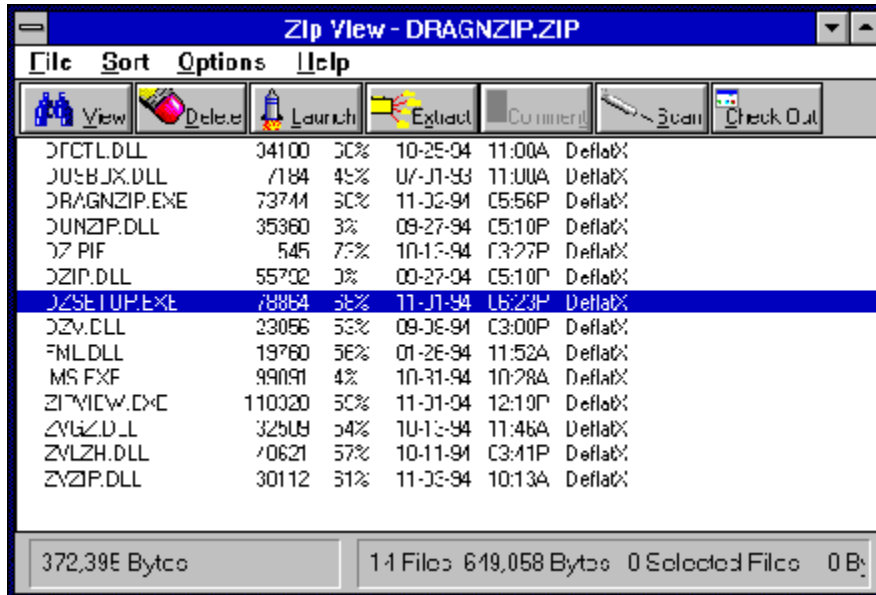
This should contain the directory where your copy of LHA.EXE is. When this field is active, you can use the browse button to find the LHA directory.

## Dragging and Dropping Directories

With Drag And Zip, you can drag and drop subdirectories just like files. In the Windows file manager, you can only drag directories if you have them listed along with files on the right hand side of the file manager. When a directory is dragged, all the files in the directory will be compressed. If you want to zip any sub directories in the dragged directory, you can click on "Zip Subdirectories" and also "Store Pathnames" or "Store All Pathnames".

Norton Desktop, PC Tools Desktop and our own file manager Drag And File allow you to drag whole directory branches from the directory tree. If you are dragging a whole directory branch with sub directories from one of these programs, you should not use the "Zip Subdirectories" option because that would make the directories get zipped twice.

## Viewing Zip Files



Zip View

The easiest way to use Zip View is to double click on a ZIP, LZH or GZ file in your file manager. If you've let the setup program put an association line in your WIN.INI, Zip View will run and will show a file listing of the contents of the zip file in a window. The listing will have the file name, the size in bytes, the date and time of the file, the compression method used; and if there is a stored directory name, Zip View will show that also. On the bottom left the number of files in the ZIP file will be displayed, as well as their collective size. You can also drag zip files to the Drag And Zip icon or the Zip View icon to view them.

## Type To File

Zip View makes it easy to find any file even in a large listing: Just type in the filename. As you type it, the highlight bar will go to that file. An edit window will open up on the bottom left showing you the contents of what you type. You can also just type in a partial filename and use the up and down arrows to scroll through the matches.

You don't have to close the Zip View window to view another ZIP file. Just double click on another ZIP file and Zip View will show it. You can also bring files into Zip View by dragging them to its icon or window or by using Zip View's file menu.

There are seven buttons across the top of the screen. You can click the mouse on them or use the Alt key and the underlined letter on the button. Clicking on a file will move the highlight bar to that file. You can then tag the file so Zip View will know that you want to unzip it.

## Tagging Files

You can tag any in one of three ways:

1. Hold down the Ctrl key and click on the file with the left mouse button.
2. Click on the file with the right mouse button.
3. Highlight the file and then press the space bar.
4. Highlight the file and press the left arrow key.

You can untag the file by doing the same procedure on a tagged file.

A tagged file will have a red arrow at the front of its listing. Like File Manager, Zip View lets you tag a group of files by holding down the Shift key and clicking on a file. You can also tag and untag files with the Right and Left Arrow keys respectively. Use the Ctrl key with the arrow keys to tag and untag all the files. Double clicking on a file will extract it and run it if it is a "COM" or "EXE" file, or will run the program that you have associated with the file if it is a data file. For example, if you clicked on CHESS.BMP, Zip View would extract CHESS.BMP from the parent ZIP file and then check which program you have associated with it. Most likely you have Windows Paintbrush as the associated program. In this case, Zip View will run Paintbrush with CHESS.BMP as an argument. When you close the associated program, Zip View will delete the file. Before deleting the file, Zip View will check if it has been modified. If it has been modified, you can have Zip View replace the older version of the file in the ZIP file with the newer modified one. Simply click on OK when Zip View asks you if you want to put the modified file back into the ZIP file. If you double click on a file that has no program associated with it, you will be able to choose from a list of programs to run with it.

## View

The first button is "View". Clicking on this or pressing "Alt-V" will have Zip View extract the file from the zip file and load up a file viewer so you can see the contents of the file. Zip View's built in file viewer can accept files of unlimited length. From the viewer's "Settings" menu you can add word wrap and change the font that the viewer is using. The file being viewed will only be extracted temporarily and will be deleted when you try to view another file or exit Zip View. If you want the file extracted permanently, you must choose the extract button from the button bar.

If you would rather use another viewer, you can do so through the settings dialog which is explained below.

## Delete

You can delete any file or group of tagged files from the ZIP file by clicking on the "Delete" button or pressing "Alt-D".

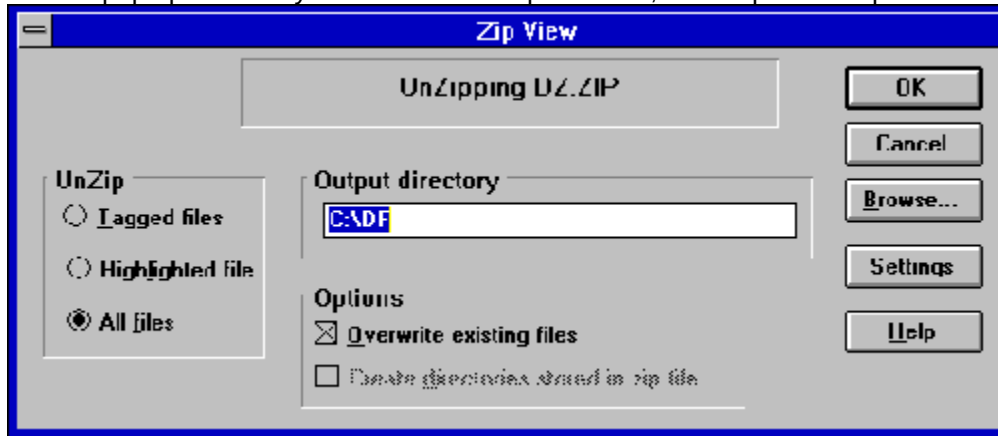


## Launch

Clicking on "Launch" or pressing "Alt-L" will extract any file from the ZIP file and run it if it is a program or run it with its associated program if it is a data file or graphic. If no program association exists for the file, you will be able to choose one.

## Extract

To extract (unzip) files from a ZIP or LZH file, choose the "Extract" button from the button bar. A dialog box will pop up in which you can enter the zip filename, and a specific output directory.



*Extract Dialog Box*

In the Extract Dialog box there are three radio buttons that give you the choice of extracting all the files, just the tagged files, or just the highlighted file.

To extract files from a zip file you don't have to do anything more then enter an output file name and choose OK. However there is an options box provided with 2 check boxes in it.

The first check box is "Overwrite Existing files". Normally if the file that you are extracting will overwrite an existing file, you will be warned before it is overwritten. Choosing this option will suppress this warning.

The next option is "Create Directories Stored in Zip File".

If your zip file has directory information stored in it, then this option will recreate those directories when the files are extracted.

If you are using an external archive program there will also be a command line arguments field where you can also manually enter any command line arguments into the arguments field. They will be passed to PKUNZIP or LHA when it is run.

## Working With GZ Files

GZ files are very popular on the Internet. Unlike files created with PKZIP or LHA, files created with GZIP contain only one file. When you use GUNZIP to extract the file, the original GZ file is deleted. Drag And Zip makes working with GZ files similar to ZIP or LHZ files. Drag And Zip first copies the GZ file to a temporary directory and extracts it from there, not removing the original GZ file. Drag And Zip uses GUNZIP to extract GZ files. If you only have a copy of GZIP, copy it or rename it to GUNZIP and that will be enough.

## Scan

Drag And Zip has a built-in version of the Integrity Master virus scanner licensed from Stiller Research. All you need to do is click on the Scan button to check a zip file for possible viruses. Integrity Master will run and the results placed in a dialog box. You can also install an external virus scanner. For Drag And Zip to run a virus scanner properly, the scanning program must support command line arguments. That way Zip View can run it and tell it which files to scan without your having to navigate through menus. Unfortunately most Windows- based scanner programs don't work this way. Most likely your scanning program will be DOS based; and in that case Zip View will run it in a DOS window.

## Check Out

Check out is good for those of you who download files from BBSs and then want to quickly try them out to see if you like them or not. Normally you would have to first extract the files and then run the installation program. If you didn't like the program you would then have to delete it manually. Check Out will do all of that automatically for you. Check Out temporarily unzips a file and puts the extracted files in a "Check Out" program group so you can "Check them out". When you're all done you can delete the extracted files and the "Check Out" group automatically, or if you want to keep the group, you can save it under another name.

There is also an option to scan the files for viruses before putting them in a program group.

## Open (File Menu)

The easiest way to use Zip View is to double click on any ZIP file in your file manager. However you can also use its file menu or just drag a file to Zip View and view it. This is especially useful for viewing self-extracting ZIP files that you can't view by double clicking on them.

## **Exit (File Menu)**

Click on this menu entry to exit Zip View.

## Sort ( Main Menu Bar)

By default, the ZIP file listing is unsorted. You can choose to have it sorted by Filename, Extension, Date and Time, or Size through this menu. There is also an option to save the desired sort for future sessions of Zip View.



## Make EXE (Options Menu)

This option will be available when viewing a ZIP file only if Zip View can find a copy of ZIP2EXE.EXE in your PKZIP directory or on your system path. With LZH files it is always available. Choosing this option will make your ZIP or LZH file into an EXE file that will extract automatically when you run it. To make a self-extracting executable (EXE) from a ZIP file, Zip View will run your copy of ZIP2EXE. Zip View will present you with a dialog box where you can enter an output directory, and a check box where you can specify if you want the resulting EXE file to be a "mini PKSFX". A mini PKSFX has a smaller header than a regular EXE file made with ZIP2EXE, and is therefore smaller. To make a mini PKSFX file, Zip View runs ZIP2EXE with the "-j" option. To make a self-extracting executable from an LZH file, Zip View will run your copy of LHA on the file.

## **Convert to ZIP\LZH (Options Menu )**

This option will convert a ZIP file to a LZH file and convert a LZH file to a ZIP file. You will also be able to change the filename and the destination directory. To convert a ZIP file to a LZH file, you will need copies of PKUNZIP and LHA. To convert a LZH file to a ZIP file you will need copies of LHA and PKZIP.

## Fonts (Options Menu)

Clicking on Fonts will bring up a standard Windows 3.1 font dialog box from which you can change the default font in Zip View.

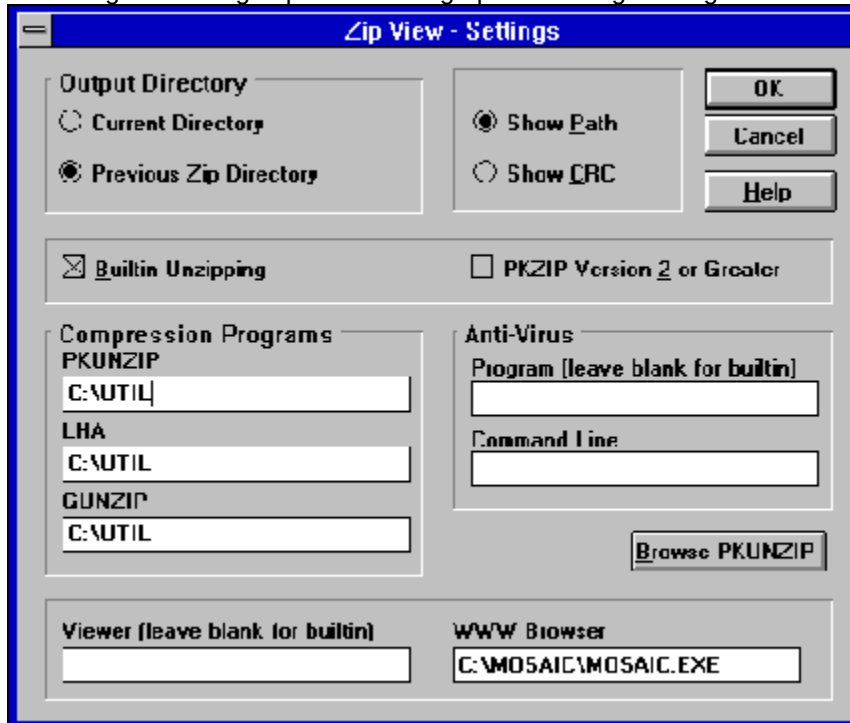
## Using Zip View without File Manager

Zip View can also be run alone instead of from Windows File Manager. You can use the "File\Load" menu option to choose a ZIP file to view. You can also drag files from your file manager to Drag And Drop or Zip View and view them. You can use these methods to view self extracting ZIP files that you can't view by double clicking on them.

# Changing Zip View's Settings

## Settings (Options Menu)

Choosing the settings option will bring up the Settings dialog box:



Settings Dialog Box

### Output Directory

This option lets you choose the default output directory to unzip files to. The choices are:

Current Directory - the directory where the file you're viewing currently resides.

Previous Zip Directory - the last directory that you extracted files to.

### Display Options

These options allow you to choose which information Zip View will show in its ZIP file display. Normally, any stored path information will be shown. But if you click on "Show CRC", Zip View will show CRC information instead. Whichever view option you choose will be saved automatically for future Zip View sessions.

### Built-in Unzipping

Choosing this option will use Drag And Zip's internal unzipping for extracting files from zip files. If this box is not checked, you will have to enter the directory where your copy of PKUNZIP is.

### PKZIP Version 2 or Greater

If you are using an external copy of PKUNZIP instead of Drag And Zip's built-in Unzipping, it is necessary that the state of this option reflects the version of PKUNZIP that you are using as it will determine which options are sent to PKUNZIP when it is run.

### PKUNZIP Location

This field should indicate the directory where your copies of PKZIP and PKUNZIP are. When this field is active, you can use the Browse button to help you find PKUNZIP.

### LHA Location

This field should indicate the location where your copy of LHA.EXE is. When this field is active, you can use the Browse button to help you find LHA.

## **GUNZIP Location**

GZ files are very popular on the Internet. GUNZIP.EXE is a program that you can use to expand these GZ files. GUNZIP.EXE normally comes as GZIP.EXE. To make it into GUNZIP you need to rename it or copy it to GUNZIP.EXE. Enter the location of GUNZIP in this field. When this field is active, you can use the Browse button to help you find GUNZIP.

## **Anti-Virus**

Drag And Zip has a special built-in version of Integrity Master virus scanner licensed from Stiller Research. If you intend to use the built-in scanning you can leave this field blank. If you want to use an external virus scanner, you should enter the path and the name of the anti-virus program you want Zip View to run when you want to scan files for viruses. In the second field, enter the commands that Zip View has to pass to the scanning program to make it work. Put "\*" where you want Zip View to substitute the drive and directory of the files that you want scanned. For instance, if you were using McAfee's Scan program you would enter "/A /nomem \*.\*". The "/A" indicates that you want all of the files scanned. The "/nomem" tells the program not to scan memory, just files. The "\*" will be replaced by Zip View with the drive and directory of the files to be scanned.

## **Viewing Program**

Drag And Zip has its own built-in ASCII viewer that you can use to view ZIP files. However if you want to add a different viewer you can enter the directory and the filename in this section. If nothing is entered here, Zip View will use its own built-in viewer. If you want a more robust file viewer, we recommend Drag And View Gold by Canyon Software.

## Using Zip View with WWW Browsers

Zip View has been made to work with many World Wide Web browsers. All you have to do is see that your browser is properly listed in the Zip View Settings dialog. If it is, Zip View will run automatically whenever you bring a GZ, ZIP or LZH file from the net.

# Using Fileman Launcher

[What is Fileman Launcher?](#)

[Using Fileman Launcher](#)

[Removing Fileman Launcher](#)

[Adding, deleting and changing program properties](#)

[Run Programs](#)

[Quit Programs](#)

[Auto View, View Files](#)

[Zip Files](#)



## **What is Fileman Launcher?**

Fileman Launcher is a utility that allows you to run all your File Manager accessories automatically along with File Manager. Fileman Launcher is installed when you install Drag And Zip. When you run File Manager, Drag And Zip will also be run. As long as File Manager is the topmost program, Drag And Zip's icon will not be covered up by any other programs. When you exit File Manager, all the programs that you ran with it will be exited automatically. Fileman Launcher installs an "Fml" menu item in File Manager. From the Fml menu you can add programs to and delete programs from the list of programs that Fileman Launcher runs, change how the programs are run, add command line arguments to the programs, quit all the programs, and rerun the programs. In addition to Drag And Zip, Fileman Launcher can run up to 9 additional programs with File Manager, and quit them when you quit File Manager.

## **Using Fileman Launcher**

Once Fileman Launcher is installed you don't have to do anything. It will run automatically every time you run File Manager. There will be a menu item called "Fml" on File Manager's menu bar. From the Fml menu you can add, delete and change the way Fileman Launcher runs programs.

## **Removing Fileman Launcher**

If you want to remove Fileman Launcher from File Manager, run the DZSetup program and choose the option "Remove Fileman Launcher".

## Adding, deleting and changing program properties

You can easily add or delete programs from Fileman Launcher or modify how it runs the programs. Just choose the menu item "Modify Program List" from the Fml menu in File Manager. A dialog box will pop up that shows the programs you have installed in Fileman Launcher and the ways you want to run them. At the bottom of the dialog box are buttons that say "<< Last" and "Next >>"; these buttons allow you to scroll through the program list. You can install up to 10 programs in Fileman Launcher. The upper left of the dialog box will tell you which number program you are viewing. Drag And Zip will be installed as program #1. If you want to add a new program, just click on the "Next >>" button until you get to a blank entry. Under the program heading enter the name of the program that you want to run with the full path. If you are not sure where the program is, you can click on the browse button on the right hand side to help you find it.

Under the program name there are three check boxes. They say "Run with File Manager", "Visible with File Manager" and "Remember Icon Position". "Run with File Manager" should be checked if you want the program to be run with File Manager. "Visible with File Manager" will allow you to always find this program when you want to use it with File Manager. When File Manager is on top of the other windows, so will be this program. When another application has the focus, then your program will allow itself to be covered. As soon as you click on File Manager and give it the focus, then your program will appear also. If you want this option to be active, see that "Visible with File Manager" is checked. "Remember Icon Position" will remember the position of the application's icon when you close File Manager and will have the icon appear in the same place the next time you run File Manager. These last two options will be available only if you choose to have your application run as an icon. For that you need to have the "Show as icon" radio button on the right hand side checked.

On the right hand side are three radio buttons that allow you to specify how you want the program to be run. You can run the program as an "icon". You can run the program "Normal"; that is, like running the program from Program Manager. Or you can run the program "Maximized"; a maximized program will fill up the entire screen. Fileman Launcher will give the appropriate command when running the program. Some programs may not respond to the command and run only one way.

At the bottom of the dialog box, just above the "<< Last" and "Next >>" buttons, is an edit field called "Command line arguments". If you want to add any particular command line arguments to modify how the program will be run, you can put them in this field.

If you want to change any entry, just go to it and type your new specifications. Similarly, you can delete any entry by removing its name from the Program field.

Clicking on the OK button will save your changes automatically. Clicking on Cancel will discard your changes.

If you have made any changes to Fileman Launcher's program list, they won't become active immediately. You need to choose the menu item "Quit Programs" from the Fml menu. That will close all the running Fileman Launcher programs. Then choose "Run Programs" from the Fml menu. That will rerun the programs according to the changes that you've made.

## **Run Programs**

Choose this menu option from the Fml menu to run the programs installed in Fileman Launcher. This menu item will only be available if the programs aren't running.

## **Quit Programs**

Choose this menu option from the Fml menu to close all the Fileman Launcher programs that are currently running.

## **Auto View, View Files**

These options will be available only if you are running Drag And View (also from Canyon Software). Drag And View allows you to view your files in formats approximating their native format.

## **Zip Files**

You can use this option to ZIP files instead of dragging them to Drag And Zip's icon. This option will be available only if Drag And Zip is running.



## Getting Help

If you have questions or problems with Drag And Zip, Zip View or Fileman Launcher, help is free for all registered users.

You can reach me by phone, fax, e-mail or U.S. mail at the numbers below:

Dan Baumbach

Canyon Software

1537 Fourth St., Suite 131

San Rafael, CA 94901

USA

Phone (415) 453-9779

Fax (415) 453-6195

BBS (415) 453-4289

CompuServe 71320,1277

America On Line DanBCan

Internet 71320.1277@compuserve.com

