

## Welcome to Password Keeper '99 v2.35e!

Password Keeper '99 is a program where you can keep all your passwords securely in an encrypted file. The encryption is done with a 448 bit key of the Blowfish algorithm. (see: [Encryption](#))

Only the LIGHT version of the program is Freeware! Please read the [License agreement](#).

More information about what is available in the PRO version you can read here: [Functions](#).

If you have questions, advice or anything else you can contact me. I'm glad about any kind of feedback! ([Contact](#))

### Related topics

[Introduction](#)

## Contact

There are several ways to contact me. My postal address:

**Hans Wolff**  
**Achatweg 3**  
**D-17036 Neubrandenburg**  
**Germany**

... or in the Internet:

**E-Mail:** [passkeep@wolffsoftware.com](mailto:passkeep@wolffsoftware.com)

**Homepage:** <http://www.wolffsoftware.com>

## System requirements

Password Keeper '99 is running on every **Windows 95 / 98** operating system with at least 800 x 600 resolution. Under Windows NT should be no problems if you have administrator rights.

In addition Password Keeper '99 needs some free memory and a little space on your hard drive. I recommend having a mouse but it works without a mouse as well.

## Command line parameters

Password Keeper '99 supports following command line parameters:

Syntax: PASSKEEP.EXE [Options] [File.pwk] [...]

### Options:

-help	this overview
-regname:xxx	Set registration name (xxx = registration name)
-regsernum:xxx	Set serial number (xxx = serial number)
-nomenubmps	Hide all menu bitmaps
-noadvancedmenu	Disable advanced menus
-notexture	Disable background textures
-nosavecfg	Don't save configuration
-noshell	Don't update the windows registry
-novirus	Don't check own file size

# Functions

## **Password Keeper '99 LIGHT:**

- Password categories: Standard, Internet, Bank
- automatically login to e.g. FTP servers
- nearly infinite passwords possible
- easy handling with Drag 'n' Drop

## **The PRO version includes following functions:**

- set up expiration date for every password
- individual symbol for every password (see [More >>](#))
- Export functions to HTML, CSV and text files
- changeable background color and category font
- [Password Generator](#) to generate secure passwords
- function to search a password
- function to print your password database

# License agreement

## 1. Introduction

This License document, describes the terms and conditions by which the author (Hans Wolff) will license other parties to distribute this software program which is intended for distribution as "freeware" (LIGHT version only!). No use, reproduction or distribution or of copies of the PRO version, is permitted except in compliance with the terms and conditions set forth below.

For order information, see the "Order.txt" document.

## 2. General Terms and Conditions

The "author" (Hans Wolff) is the copyright holder of the program.

The author (Hans Wolff) offers limited support for the software and reserves the right to update the contents of the Program and its associated files, documentation and/or other elements.

You may not decompile, recompile, disassemble, reverse engineer, adapt or create derivative works of the Program!

The name of the program, Password Keeper '99, has no connection whatsoever, express or implied, with any person or object, real or fictional with the same name living or deceased. Any resemblance is purely coincidental.

The Program is protected by copyright laws and international treaties. The author (Hans Wolff) is the exclusive world-wide licensor of the Program, and the copyrights and other proprietary rights there in. The LIGHT version is intended for distribution as Freeware but the PRO version is registered to only ONE person who is allowed to use that Program.

The distribution of the Program in accordance with the provisions of this Software License Agreement is encouraged.

Any use, copying or distribution of the Program, or of any copies or elements thereof, that is not in compliance with the terms and conditions of this Agreement is prohibited.

## 3. Registered version (PRO version)

One registered copy of the program may either be used by a single person who uses the software personally on one or more computers, or installed on a single workstation used non-simultaneously by multiple people, but not both. You may access the registered version of the program through a network, provided that you have obtained individual licenses for the software covering all workstations that will access the software through the network. The author (Hans Wolff) shall be credited as the owner of the Program and the Program shall be identified by name in all distribution of the Program. This agreement shall be governed by the international laws.

### \*\*\*No Warranty!\*\*\*

THE PROGRAM IS PROVIDED "AS-IS". NO WARRANTIES OF ANY KIND, EXPRESS OR IMPLIED, ARE MADE AS TO IT OR ANY MEDIUM IT MAY BE ON. I WILL PROVIDE NO REMEDY FOR INDIRECT, CONSEQUENTIAL, PUNITIVE OR INCIDENTAL DAMAGES ARISING FROM IT, INCLUDING SUCH FROM NEGLIGENCE, STRICT LIABILITY, OR BREACH OF WARRANTY OR CONTRACT, EVEN AFTER NOTICE OF THE POSSIBILITY OF SUCH DAMAGES.

BY USING THE PROGRAM YOU ACKNOWLEDGE THAT YOU HAVE READ THE "NO WARRANTY" TOPIC, UNDERSTAND IT, AND AGREE TO BE BOUND BY ITS TERMS AND CONDITIONS. YOU ALSO

AGREE THAT THE "NO WARRANTY" TOPIC IS THE COMPLETE AND EXCLUSIVE STATEMENT OF AGREEMENT BETWEEN THE PARTIES AND SUPERSEDE ALL PROPOSALS OR PRIOR AGREEMENTS, ORAL OR WRITTEN, AND ANY OTHER COMMUNICATIONS BETWEEN THE PARTIES RELATING TO THE SUBJECT MATTER OF THE WARRANTY.

## Ordering information

Online registration: <http://www.shareit.com/programs/104319.htm>

If you want to order the PRO version of Password Keeper '99 then fill out the file ORDER.TXT. The PRO version costs only \$20 (US) and you register for all future versions **2.x** !

If you unfortunately can't find the file ORDER.TXT please write me. ([Contact](#))



# Encryption

The encryption of the PWK files are done with to Blowfish algorithm. This is a very secure algorithm and I'm using the highest possible key length of 448 bit! More information about Blowfish you can find on the Internet:

<http://www.counterpane.com/blowfish.html>

## Related topics

[Security](#)

# Introduction

Password Keeper '99 is working like a database for passwords. Every file is encrypted very securely so you needn't to have fear that anybody can ever read your passwords.

For detailed information how to use the program go to: [Operating instructions](#)

## Related topics

[System requirements](#)

[Functions](#)

[Operating instructions](#)

## Updates

All bug fixes and new functions since the version 2.0 you can look up in the file UPDATE.TXT.

Updates or other nice programs you can get from: <http://www.wolffsoftware.com>

## How to use

I've tried to make Password Keeper '99 easy to use. First you must create a File by clicking "New" in the "File" menu. Now you see an empty document with the three default categories "Standard", "Internet" and "Bank". You can separate all your passwords in these categories. To add or remove a category look into the "Category" menu.

Select the category where to add a password by clicking on the tab. Then click on "Add password" in the menu "Password" and enter the information about the password you want to add. After you've clicked "OK" the password on your list. Repeat this until all your passwords appear in the categories.

Now you should save the file to keep the information encrypted on your hard disk. Click on "File" -> "Save" to save the file. If you're saving the file for the first time the program is asking you for an encryption password. Please remember this encryption password (= master password) otherwise you cannot access your passwords never again!

If you want to see a practical example, you can open the file EXAMPLE.PWK, the master password is "example". This file even demonstrates some features of the PRO-Version.

### Related topics

[Add entry / Change entry](#)  
[Category](#)

## Security

The security of Password Keeper '99 is very high. Every Password Keeper file is encrypted with a 448 Bit key of the Blowfish algorithm (see [Encryption](#)). All passwords are still encrypted when the data is loaded into memory.

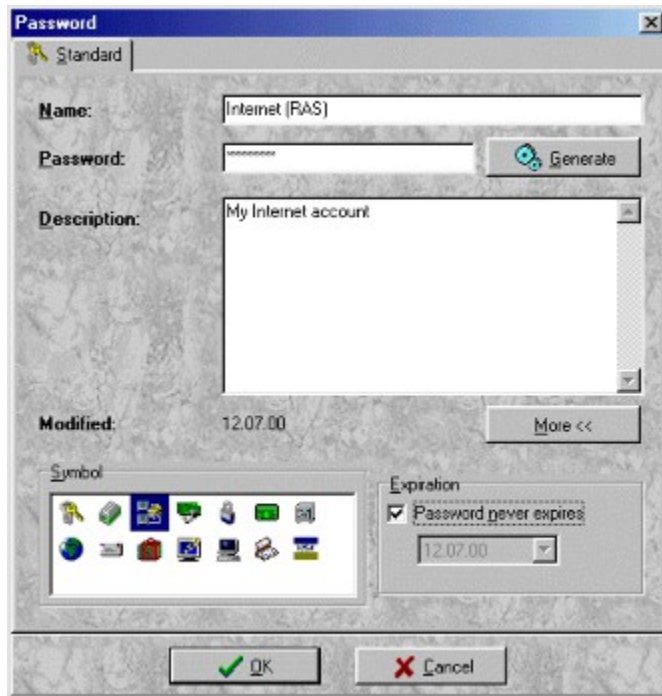
### Related topics

[Encryption](#)

## Add / change entry

You can add a password to your list by clicking on “Add password” in the “Password” menu.  
To change an entry click on “Change password”.

In both cases there will appear this dialogue:



The image shows a Windows-style dialog box titled "Password". It has a "Standard" tab selected. The dialog contains the following fields and controls:

- Name:** A text box containing "Internet (RAS)".
- Password:** A text box with masked characters (dots). To its right is a "Generate" button with a circular arrow icon.
- Description:** A multi-line text box containing "My Internet account".
- Modified:** A label followed by the date "12.07.00". To its right is a "More <<" button.
- Symbol:** A grid of 16 small icons representing different symbols.
- Expiration:** A section containing a checked checkbox labeled "Password never expires" and a date box showing "12.07.00".

At the bottom of the dialog are two buttons: "OK" (with a green checkmark icon) and "Cancel" (with a red X icon).

The extended features can only be accessed in the PRO version of Password Keeper '99!

## Category

You can separate your passwords into three types of categories: “Standard”, “Internet” and “Bank”. You can add and remove categories but you cannot create own types of categories yet.

## Options

### **“Minimize window to system tray only”**

If you activate this option then Password Keeper will minimize to the system tray only. (on the task bar next to the clock)

### **“Automatically install shell extension“**

If Password Keeper installs the shell extension the program is started if you double-click a PWK file.

### **“Hide all unsupported functions”**

The LIGHT version shows some features of the PRO version. If you don't like to see them you should activate this option.

### **“Reopen last file at startup”**

On every start you will be asked if you want to reopen the last opened file again.

### **“Check passwords for expiration”**

All passwords will be checked for expiration if you open a file. (PRO version only!)

### **“Language“**

You can set up the language here. The language information is loaded from simple LNG files.

### **“Create BAK files (recommended)”**

Password Keeper will create backup files automatically if you save a file. I recommend to activate this option because if you lose your PWK file it is not good! Backup files have a BAK extension.

### **“Clear Clipboard on exit”**

Activate this if you don't want to leave a password on the Clipboard after exit.

### **“Password character”**

Here you can select which character should be displayed instead of the password letters. If you leave this empty all passwords will be shown as they are.

### **“Ask for file password after restoring the window”**

If you activate this, every time the password will be asked to restore the minimized window.

### **“Paint textured backgrounds”**

Enables / disables the background textures.

### **“Adjust textures to actual window color settings”**

To get a better look to the background textures activate this options.



## Print

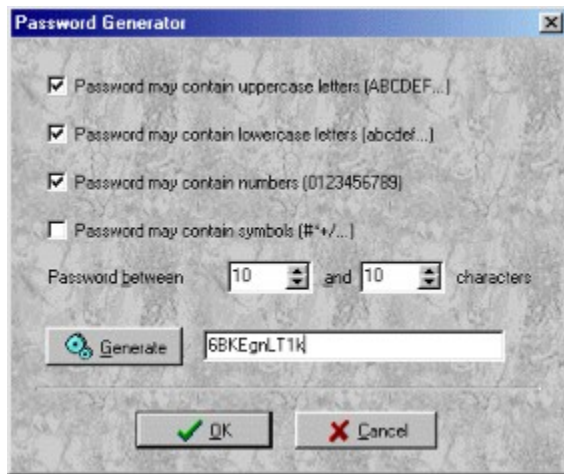
The printing function is still in BETA state. If you experience problems you can change the following entry in the PASSKEEP.INI file:

**AlternatePrint=1**

Notice: Please exit the program before you change something in the INI file.

## Password Generator

The Password Generator is only available in the PRO version!



To generate secure passwords they should contain at least 10 characters and include numbers.

