

***USER MANUAL***



# EldoS TimelyWeb™ User Manual

© 2002 by EldoS Group

*All rights reserved. No parts of this work may be reproduced in any form or by any means – graphic, electronic, or mechanical, including photocopying, recording, taping, or information storage and retrieval systems – without the written permission of the publisher.*

*Products that are referred to in this document may be either trademarks and/or registered trademarks of the respective owners. The publisher and the author make no claim to these trademarks.*

*While every precaution has been taken in the preparation of this document, the publisher and the author assume no responsibility for errors or omissions, or for damages resulting from the use of information contained in this document or from the use of programs and source code that may accompany it. In no event shall the publisher and the author be liable for any loss of profit or any other commercial damage caused or alleged to have been caused directly or indirectly by this document.*

# Table of Contents

<b>FOREWORD .....</b>	<b>4</b>
<b>PART I. QUICK TOUR .....</b>	<b>5</b>
I.1. WHAT IS TIMELYWEB .....	7
I.2. MAIN FEATURES.....	7
I.3. HOW DOES IT ALL WORK?.....	7
I.4. HOW TO USE TIMELYWEB.....	8
<b>PART II. USER INTERFACE .....</b>	<b>9</b>
II.1. MAIN WINDOW .....	11
II.1.1. Link Window .....	11
II.1.2. Information Window.....	12
II.1.3. Protocol Window.....	12
II.1.4. Left Panel .....	12
II.2. MAIN MENU .....	13
II.2.1. File Menu.....	13
II.2.2. Edit Menu .....	13
II.2.3. View Menu.....	14
II.2.4. Links Menu .....	14
II.2.5. Help Menu .....	15
II.3. MAIN TOOLBAR .....	15
II.4. HOT KEYS.....	16
<b>PART III. SETTING UP PARAMETERS .....</b>	<b>17</b>
III.1. TIMELYWEB OPTIONS.....	19
III.1.1. Main Options .....	19
III.1.2. Connection .....	19
III.1.3. Proxy .....	20
III.1.4. Dial-up .....	20
III.1.5. E-Mail .....	21
III.1.6. View.....	22
III.1.7. Confirmations .....	22
III.1.8. Basket.....	22
III.1.9. Sound .....	23
III.1.10. Download.....	23
III.1.11. Browser .....	23
III.2. LINK PROPERTIES.....	23
III.2.1. Main Link Properties.....	24
III.2.2. Login to Server .....	24
III.2.3. Check Period.....	24
III.2.4. Notifications.....	25
III.2.5. Analysis .....	26
III.2.6. Status .....	26
III.2.7. Memo.....	26
III.2.8. Screenshot .....	26
III.3. FOLDER PROPERTIES .....	26

<b>PART IV. DOING THINGS .....</b>	<b>27</b>
IV.1. LINK STATES .....	29
IV.2. MANAGING LINKS .....	29
IV.2.1. Adding a New Link.....	29
IV.2.2. Checking Links .....	29
IV.2.3. Deleting a Link.....	30
IV.3. MANAGING FOLDERS .....	30
IV.3.1. Creating a New Folder.....	30
IV.3.2. Deleting a Folder .....	30
IV.4. CHANGING OPTIONS AND PROPERTIES.....	31
IV.4.1. Changing Application Options .....	31
IV.4.2. Changing Link Properties .....	31
IV.4.3. Changing Default Link Properties.....	31
IV.4.4. Changing Folder Properties.....	31
IV.5. SEARCH.....	32
IV.6. LOAD AND SAVE .....	32
IV.6.1. Importing Links .....	32
IV.6.2. Exporting Links .....	33
IV.7. WORKING WITH BROWSERS.....	33
IV.7.1. Opening a Link in Browser .....	33
IV.7.2. Integration with Browsers .....	34
IV.7.3. Integration with Download Managers.....	34
IV.8. SYSTEM NOTIFICATIONS.....	34
IV.8.1. Listing Changed Links .....	35
IV.8.2. Listing Errors.....	35
IV.8.3. Execution of External Applications .....	36
IV.8.4. Network Messages .....	36
IV.9. RESOURCE ADDRESSES.....	37
IV.9.1. Forming Resource Addresses.....	37
IV.9.2. Using Macros in Addresses.....	37
IV.10. ADVANCED HTTP PROPERTIES.....	38
IV.10.1. Custom Referrer .....	38
IV.10.2. POST Request.....	39
IV.10.3. Cookies.....	39
IV.11. EXTENDED LOGIN .....	40
IV.11.1. What is Extended Login.....	40
IV.11.2. How to Use Extended Login .....	40
IV.11.3. Multi-level Extended Login .....	41
IV.12. USING DROP BASKET .....	41
IV.13. MAKING WEB SITE SCREENSHOTS.....	42
IV.14. USING WEB PAGE CONTENT ANALYSIS .....	42
IV.14.1. Keywords Monitoring .....	43
IV.15. WEB PAGE DIFFERENCE HIGHLIGHTING.....	44
IV.16. E-MAIL AND SMS NOTIFICATIONS .....	44
IV.16.1. Recipient Address.....	45
IV.16.2. Remote Notification Templates .....	45
<b>PART V. CONTACT INFORMATION.....</b>	<b>47</b>
V.1. TIMELYWEB FEEDBACK.....	49
V.2. TIMELYWEB REGISTRATION.....	49
V.2.1. How to Register .....	49
<b>INDEX.....</b>	<b>52</b>

## Foreword

Nowadays information changes with the speed of light. To succeed, you have to know about changes before your competitors. TimelyWeb will help you – it will notify you about web resource change and will deliver the changed resource to your computer. Whether you want to succeed in your business or just devote your free time to your hobby, you have to be the first. So, stay informed with TimelyWeb.

Using TimelyWeb is not just easy – it's very easy. One click in Internet Explorer toolbar – and you're sure you won't miss the resource change – TimelyWeb will periodically check the resource and notify you whenever the change takes place. And that's not all – you can tune up the application so that it will open the web page in browser or download the file to your computer <sup>(1)</sup>. If you are on a trip, the application will send a message to e-mail or SMS <sup>(2)</sup>.

You can also use the application to monitor availability of your own web site. If the site is unavailable for some reason, you will be immediately notified <sup>(3)</sup>. And – TimelyWeb is completely free <sup>(4)</sup> to use! No advertisements, no nag screens, no time bombs!

---

<sup>(1)</sup> Requires Reget or Net Vampire or GetRight download manager.

<sup>(2)</sup> SMS is delivered via e-mail and requires presence of e-mail-sms gateway service offered by your mobile operator.

<sup>(3)</sup> Requires check interval of 5 to 10 minutes.

<sup>(4)</sup> TimelyWeb is absolutely free, but in order to utilize the full range of features you need to register (see V.2. *TimelyWeb Registration* on page 49).

**EldoS TimelyWeb™**

Copyright © 2002 by EldoS Group. All rights reserved.

Copyright © 1998-2001 by Mikhail Chernyshev. All rights reserved.

<http://www.eldos.org>

[support@eldos.org](mailto:support@eldos.org)

An orange circle is positioned to the left of the text 'Part I. Quick Tour'.

# **Part I. Quick Tour**





## I.1. What Is TimelyWeb

Is there a web page you visit to stay informed about changes of information? TimelyWeb will watch this page for you and notify you in a number of ways. Save your time, money and nerves – visit the pages when they are updated. Don't waste time looking at old web pages!

TimelyWeb is capable not only for tracking changes, but also for downloading the changed resources to your computer. Using TimelyWeb, you will always have the latest version of your applications, drivers, or any other information you need on your computer!

TimelyWeb is very easy to use! You add new link to your FTP file, Web page or directory on the FTP server, you tune up some settings if necessary, and that's all! When the resource is changed, you will be notified.

## I.2. Main Features

TimelyWeb offers you a complete set of features that will automate the process of updated content delivery to your computer:

- ✓ Monitoring of WWW and FTP resources;
- ✓ Analysis of dynamically generated web pages;
- ✓ Support for WWW, FTP and SOCKS proxies;
- ✓ Support for Secure HTTP (HTTPS) protocol <sup>(1)</sup>;
- ✓ Monitoring of unlimited number of resources <sup>(2)</sup>;
- ✓ Different notification methods –
  - send an e-mail;
  - display message;
  - open web page;
  - download file automatically <sup>(3)</sup>;
  - create visual difference page;
  - execute any external application;
  - send network message;
- ✓ Individual schedule for every task;
- ✓ Easy-to-use tree-like organization of data;
- ✓ Import and export of links to files in various formats;
- ✓ Automatic creation of web page screenshots;
- ✓ Integration with web browsers and download managers.

---

<sup>(1)</sup> In version 3.10 or better.

<sup>(2)</sup> Unregistered version can be used to monitor up to 10 links.

<sup>(3)</sup> Requires Reget or Net Vampire or GetRight download manager.

## I.3. How Does It All Work?

TimelyWeb can track changes of any information that can be obtained using `http://`, `https://` and `ftp://` protocols – no matter if it is a Web-page, some application package or something else.

TimelyWeb tracks the changes by obtaining the information about resource's size and time of the last modification from the server, and comparing this information with the previously stored one. Some web servers don't give any information about the size and time of the resource. In this case TimelyWeb downloads the resource and checks its size.

## I.4. How to Use TimelyWeb

To monitor changes in net resources, you need to add their locations (often named URL's or links) to the application and set their properties. Once a link is added, it is checked automatically once a specified period (you can change the default period using default link properties or set a period for a link in Link properties (see *III.2. Link Properties* on page 23)).

When you have lots of links, it is reasonable to organize them into tree-like structure by building a tree of folders where each folder can contain links and other folders. You can add descriptions and notes to the links to make your structure more distinct.

In order to view selected links only (e. g. only the modified resources), you can use filters located in the left panel of the main window (see *II.1.4. Left Panel* on page 12).

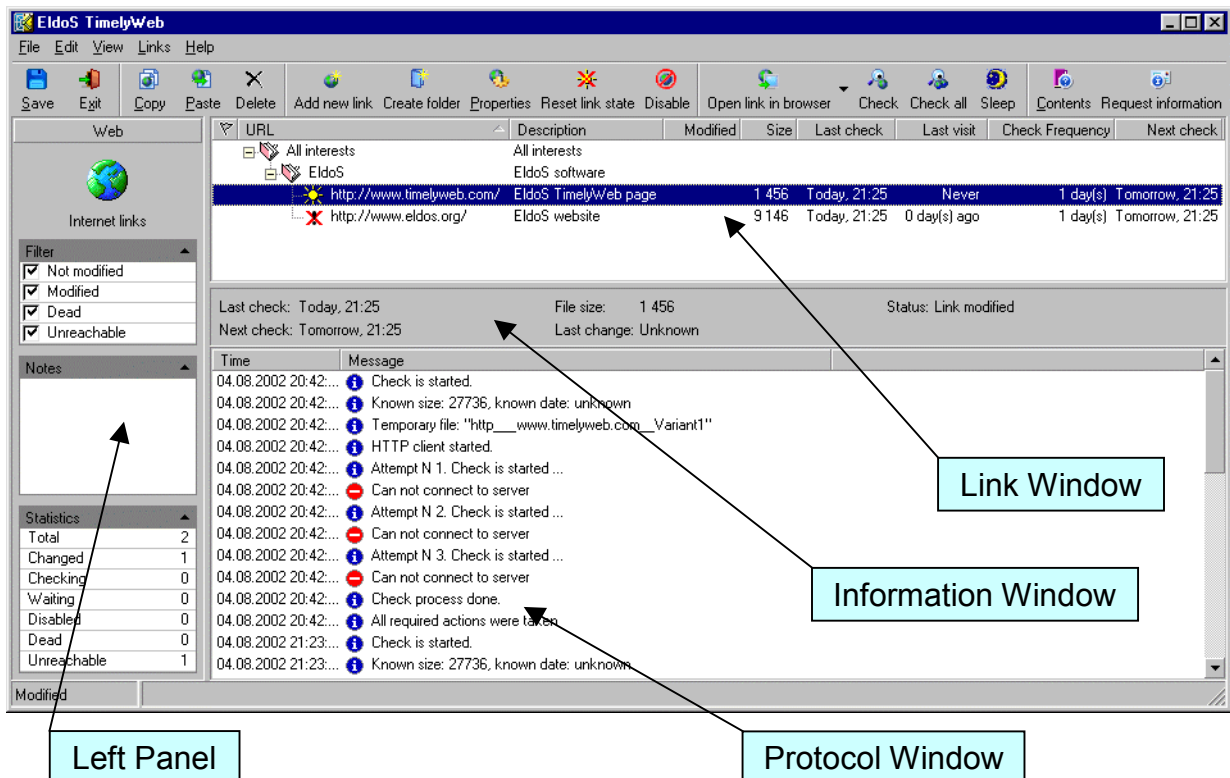
A solid yellow circle is positioned to the left of the text 'Part II. User Interface'.

## **Part II. User Interface**



## II.1. Main Window

The EldoS TimelyWeb main window consists of standard elements like the toolbar and the status bar and several panels and sub-windows that display different information. These panels are fully resizable. To resize a panel, drag its boundary to a desired direction.



### II.1.1. Link Window

The link window is the main part of the TimelyWeb interface that represents the tree of folders and links you want to monitor. Here you can make use of the tree structure to organize your links to your convenience.

In the root folder called *All interests* you can create subfolders representing different fields of your interests and containing links to web resources you want to monitor. Each entry of the tree can have a description to remind you its purpose. Web resource entries also have several fields that concern their modification status. An icon beside a web resource entry also reflects current status of the link.

Right-click the table header to customize the table layout.

Right-click to open the pop-up menu that you can use to perform the same operations that are available from the toolbar (see *II.3. Main Toolbar* on page 15).

### *II.1.2. Information Window*

The information window always shows the modification status of currently focused link. You can hide or show the left panel the menu (see *II.2.3. View Menu* on page 14).

Right-click to open the pop-up menu that allows you to hide the information window.

### *II.1.3. Protocol Window*

The Protocol window shows a report of what was done in order to track modifications of a focused link. Here you can see all actions done by TimelyWeb and their results. You can hide or show the left panel the menu (see *II.2.3. View Menu* on page 14).

Right-click to open the pop-up menu that allows you to select and copy the report contents to the clipboard, to clear the log and to hide the protocol window.

### *II.1.4. Left Panel*

The pane to the left of the other windows contains various additional controls and information about your links' status. These controls are organized into the following boxes.

The *Filter* box allows you to temporarily hide some category of links in order to analyze the others. For example, you would like to hide all non-modified links in order to concentrate on the modified ones and visit the appropriate sites for updates. To use the filter, clear the checkboxes of those categories that you don't want to be displayed. For the above example, uncheck the *Not modified* checkbox.

The *Notes* box always displays the memo (a long description) of a focused link (see *III.2.7. Memo* on page 26).

The *Statistics* box displays the total number of monitored links, the number of links being checked, the number of unreachable links etc.

You can hide or show the left panel the menu (see *II.2.3. View Menu* on page 14). Also you can roll up or drop down an individual information box by clicking an arrow at the top right of a box.

## II.2. Main Menu

### II.2.1. File Menu

The *File* menu is used to load and save data to your hard drive and to exit the application. Following commands are available:

Command	Shortcut	Description
Save	Ctrl+S	saves the links list
Import	Ctrl+I	imports links from a list on disk. You can import text files, browser favorites, etc.
Export	Ctrl+E	exports links to an external file
Sleep	F7	temporarily suspends scheduled modification tracking
Exit		exits the TimelyWeb application

### II.2.2. Edit Menu

The *Edit* menu is used to load and save data to your hard drive and to exit the application. Following commands are available:

Command	Shortcut	Description
Copy	Ctrl+Ins	copies currently focused link to clipboard
Paste	Shift+Ins	pastes link from clipboard
Delete	Del	deletes currently focused link or folder
Find	Ctrl+F	searches a text in links, descriptions, URL's, etc (see <i>IV.5. Search</i> on page 32)
Find next	F3	searches for the next occurrence of the search text
Properties	F2	exits the TimelyWeb application

### II.2.3. View Menu

The *View* menu is used to hide and display elements of the TimelyWeb interface. Following commands are available:

Command	Description
Show horizontal lines	shows horizontal lines in the tree of link window
Show vertical lines	shows vertical lines in the tree of link window
Show information window	shows/hides the information window (see page 12)
Show protocol window	shows/hides the protocol window (see page 12)
Show left panel	shows/hides the left panel (see page 12)
Show changed links	displays a list of modified web resources (see <i>IV.1. Link States</i> on page 29)
Show errors	displays a list of errors occurred (see <i>IV.8.2. Listing Errors</i> on page 35)
Options	displays the application options dialog box (see <i>III.1.1. Main Options</i> on page 19)

### II.2.4. Links Menu

The *Links* menu is used to manage your links and the tracing process. Following commands are available:

Command	Shortcut	Description
Add new link	Ins	adds a new link to the links' tree
Create folder		creates a new folder in the links' tree
Check	F8	checks the focused link for modifications
Open		opens a submenu allowing you to choose one of the browsers installed in your system to open the focused link
Reset link state		resets the focused link's state to <i>unchanged</i>
Disable		disables the focused link's check
Check all	F9	checks all links for modifications
Check unreachable		rechecks all unreachable links for modifications
Default link properties		opens default link properties (see <i>III.2.3. Check Period</i> and <i>III.2.4. Notifications</i> on page 24)



### II.2.5. Help Menu

The *Help* menu is used to access the TimelyWeb help system, to contact the support team, to reach the TimelyWeb web site, etc. Following commands are available:

Command	Shortcut	Description
Contents	F1	opens the help contents
Feedback		using a submenu, allows to request an information, report a bug or suggest a feature
Homepage		opens the TimelyWeb homepage
Tell a friend		allows to tell a friend about TimelyWeb using an e-mail
Languages		using a submenu, allows to choose an interface language or to learn how to install new languages
Enter code		prompts to enter the registration code (see <i>V.2. TimelyWeb Registration</i> on page 49)
About		opens the About TimelyWeb screen

## II.3. Main Toolbar



Clicking the *Save* button of the toolbar saves your links' tree to disk in the TimelyWeb format. Shortcut: Ctrl+S. This is different from exporting your links to an external file (see *IV.6. Load and Save* on page 32 for details).



Clicking the *Exit* button exits the TimelyWeb application.



Clicking the *Copy* button copies currently focused link to clipboard. Shortcut: Ctrl+Ins.



Clicking the *Paste* button pastes link from clipboard. Shortcut: Shift+Ins.



Clicking the *Delete* button to delete the focused link or folder. Shortcut: Del.



Clicking the *Add new link* button to add a new link. Shortcut: Ins.



Clicking the *Create folder* button to add a new folder.



Clicking the *Properties* button to edit the focused link or folder properties (see *III.2. Link Properties* on page 23 and *III.3. Folder Properties* on page 26).



Clicking the *Reset link state* button resets the status of the focused link to *unchanged*.



Clicking the *Disable* button disables monitoring for the focused link.



Clicking the *Open link in browser* button opens the focused link in your default browser. Clicking the down arrow opens the drop-down list allowing you to choose a browser to open the focused link.



Clicking the *Check* button starts checking the focused link.



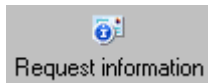
Clicking the *Check all* button starts checking all links.



Clicking the *Sleep* button suspends all scheduled checks.



Clicking the *Contents* button opens the help contents.



Clicking the *Request information* button allows you to request information about TimelyWeb using e-mail.

## II.4. Hot keys

Hot keys are applicable when you work with main application window where your folders and links are shown. Some of hot keys are only valid when some folder or link is focused, e. g. *check focused link* command can be applied after you set focus to some link.

Hot key	Description
F1	launch TimelyWeb help
Ins	add new link
Del	delete selected links and/or folders
F2	modify link properties or folder properties
F3	reset link status to <i>not modified</i>
F8	check the focused link
F9	check all links
Ctrl-C	copy link's address to clipboard
Ctrl-V	paste link from clipboard
Ctrl-N	create new file with links (registered version only)
Ctrl-O	open other file with links (registered version only)
Ctrl-S	save the links list
Ctrl-G	open the focused link in browser



## **Part III. Setting Up Parameters**



## III.1. TimelyWeb Options

TimelyWeb is a highly flexible application that you can tune up according to your own preferences and needs. Application options' dialog consists of several pages containing logically grouped settings.

### III.1.1. Main Options

The *Main* page of TimelyWeb options contains general TimelyWeb options –

- *Start when Windows starts* – when the option is enabled, every time you start Windows, TimelyWeb is started automatically. This option places a link to Start Menu, Programs -> StartUp folder. You can remove the link from that folder manually if needed.
- *Watch already modified links* – this setting tells TimelyWeb to check the link on schedule even if it is marked as modified. See IV.2.2. Checking Links on page 29 for details.
- *Set state to "not modified" when the link is opened* – TimelyWeb will reset link state to *not modified* when you open the link in browser.
- *Take description from Web page* – enables importing description from the web page META tags.
- *Integration with Microsoft Explorer* – this option enables a toolbar button and menu item in Microsoft Explorer. See IV.7.2. Integration with Browsers on page 34 for details.
- *Make screenshots* – enables or disables automatic screenshot capturing. See IV.13. Making Web Site Screenshots on page 42 for details).
- *Show Tip Of The Day on startup* – enables or disables Tip Of The Day dialog that is shown when TimelyWeb is started.
- *Save links list automatically* – when the option is set the list is saved to disk automatically once a specified period. When the options is not set, you need to click Save button on the toolbar or use File -> Save menu command in the main menu to save the list.
- *Save backup copy* – this setting determines whether a backup copy of the file is created when you override it. When you save a file with the name that already exists, it could be necessary to preserve the old file as a backup. This option is useful only in the registered copy that lets you open and save files with different names.
- *Save application log* – enables and configures the application log.
- *Folder with data files* – lets you to specify the folder where copies of downloaded pages are stored.

### III.1.2. Connection

The *Connection* page of TimelyWeb options lets you configure connection properties –

- *Maximum number of attempts to connect* – this is how many times TimelyWeb will try to connect to WWW or FTP server and get information about the resource before changing link state to error.
- *Interval between attempts* – defines the time interval between connection attempts.

- *Maximum number of concurrent connections* – defines the number of links that may be checked at the same time.
- *Connection timeout* – defines the period of time after which a server that does not respond is regarded unreachable
- *Use Passive mode for FTP connection* – if your computer is behind a firewall, or TimelyWeb is unable to connect to FTP servers, you may need to enable this setting to solve the problem.
- *Use this agent string for HTTP connections* – lets you to specify how TimelyWeb identifies itself to a web server. Default is TimelyWeb/<version>.
- *Send cookies in HTTP requests* – you can enable sending cookies to a remote server when a resource is requested. Please note that cookies are collected regardless of this option; thus, if you decide to use cookies in future, you will already have a set of probably valid cookies. You can edit, add or delete cookies for every link in the link's Advanced HTTP properties (see *III.2.1. Main Link Properties* on page 24).

### III.1.3. Proxy

The *Proxy* page of TimelyWeb options governs access to proxy servers. Proxy servers are used in corporate networks and by some ISPs to reduce network load and/or for security reasons. Due to errors in proxy server implementations, it is advisable not to use proxy servers with TimelyWeb when possible. Let TimelyWeb try to access internet resources directly.

- *Use HTTP proxy* – enables and configures use of HTTP proxy. This proxy is used for Web links whose URLs start with `http://`). You need to specify location of a proxy server in format `http://address:port`, where address is the name or IP address of the proxy server, and port is a port number (commonly used values are 3128, 8080, 80; however, your server can have different port). Username and password are optional; specify them when you are told to do so by your network administrator or ISP support.
- *Use FTP proxy* – enables and configures use of FTP proxy. This proxy is used for Web links whose URLs start with `ftp://`. You need to specify location of a proxy server either as `http://address:port` or as `ftp://address:port`, where address is the name or IP address of the proxy server, and port is a port number (commonly used values are 3128, 8080, 80; however, your server can have different port). Username and password are optional; specify them when you are told to do so by your network administrator or ISP support.

Note that in most cases it is possible to use HTTP proxies to access FTP resources. When you use FTP proxy to access FTP resources, set *Proxy type* to *user@site*. If you are using HTTP proxy to access FTP resources, set *Proxy type* to *HTTP*.

### III.1.4. Dial-up

If you use a dialup connection, it is handy to tell TimelyWeb about it. This way, if TimelyWeb cannot access a resource because the dialup fail, it will not mark the link as erroneous. Also TimelyWeb will not check the links when no connection is present.

- *Always online.* – set this option if you have a leased line (Local Area Network, xDSL modem which is always online, etc).

- **Dial-up** – when this option is on, TimelyWeb will check the selected connections, and links will be checked only when there is a connection established. If there is no connection, no checking is done. You can select "Use any connection" or choose specific connections by checking the appropriate checkboxes.
- **Dial using 2Connect** – If you use EldoS 2Connect as a default dialer, TimelyWeb can integrate with 2Connect and manage connections automatically (Please note that 2Connect integration is smart enough to track when connection may be broken and when you still use it). See more about 2Connect at <http://www.advanced-dialer.com>.

### III.1.5. E-Mail

When the link is changed or error is detected, you can choose to be notified by e-mail or SMS. On the *E-Mail* page of TimelyWeb options you can setup e-mail delivery –

- **From: address** – the address that will be placed to `From` field of the e-mail letter. This must be a valid e-mail address, otherwise some servers may fail to pass the mail.
- **Recipient address** – the address to which e-mail notifications will be sent.
- **Recipient address for SMS notifications** – the address that is used to deliver SMS message to your mobile phone. See *IV.16. E-mail and SMS Notifications* on page 44 for details.
- **Subject field for e-mail** – you can specify the text that will be placed to `Subject` field of your e-mail notifications. Please note that subject is added to e-mails only (not to SMS).
- **SMTP server address and port** – here you specify the address of the server used to send outgoing mail. This is the address that your Internet Service Provider (ISP) has told you. If you are connected to a corporate network, you will probably need to ask your system administrator or IT department specialist for an advice.
- **POP3 server address and port** – this information is needed if your SMTP server requires 'POP3 before SMTP' authentication. This is usually not needed if you use a public Internet connection (ISP).
- **Delivery method** – this option specifies, whether you send e-mail via MAPI (use this option when you have MS Outlook Express or other MAPI-compliant e-mail application and you want it to be used) or via your own SMTP client. Please note that SMTP and POP3 server addresses are only needed when you use "Own SMTP client" delivery method.
- **Use authorization** – defines whether authorization must be used to access the SMTP server. Username and password can be specified for both *MAPI* and *Own SMTP client* delivery methods. In MAPI delivery method user name and password are used to create MAPI session. For the *Own SMTP client* delivery method, there are two authorization schemes –
  - **POP3 before SMTP** – In this scheme SMTP client establishes connection to POP3 server and then uses SMTP as usual. User name and password are used to connect to POP3 server.
  - **SMTP authorization** – In this scheme the client uses username and password during SMTP conversation with the server.

### III.1.6. View

The *View* page of TimelyWeb options you can customize visual appearance of the application –

- *Show horizontal lines* – specifies whether horizontal lines should be visible in the links tree.
- *Show vertical lines* – specifies whether vertical lines should be visible in the links tree.
- *Show information panel* – shows or hides the information window (see II.1.2. *Information Window* on page 12)
- *Show protocol window* – shows or hides the protocol window (see II.1.3. *Protocol Window* on page 12).
- *Show left panel* – shows or hides the left panel (see II.1.4. *Left Panel* on page 12).
- *Highlight header captions* – when you move the mouse cursor over a caption, it is highlighted if this option is on.
- *Highlight links* – when you move the mouse cursor over a link, it is highlighted if this option is on.
- *Tree column contains...* – here you specify the contents of the main (left-hand) column of the links' list. You can choose from the URLs and the descriptions.
- *Action when the link is double-clicked* group lets you choose the action to be taken when you double-click a the link in links' list
- *System tray* group lets you choose whether TimelyWeb places its icon to the taskbar tray –
  - *Minimize to tray* – TimelyWeb icon is shown in tray when the application is minimized.
  - *Always in tray* – TimelyWeb icon is always shown in tray.
  - *Don't use* – do not appear in tray.
- *Hide program* – lets you make the application invisible. In the invisible mode TimelyWeb does not show an icon in the tray and in the taskbar. To show the application window, restart TimelyWeb (first instance will be shown instead).
- *Restore on double-click* – when TimelyWeb is hidden to tray, this option allows you to restore the application window by double-clicking on its icon in the tray.

### III.1.7. Confirmations

On the *Confirmations* page of TimelyWeb options you can specify whether you will be asked to confirm your action in the following cases –

- when you delete a link;
- when you delete several links at once;
- changing check period to less than one day.

### III.1.8. Basket

In the *Basket* page of TimelyWeb options you can enable or disable the *Drop Basket* and configure its properties. See more about using the *Drop Basket* on page 41.

- *Show Drop Basket* – choose if you want to display the *Drop Basket*.
- *Open dialog to select destination folder* – if this option is set, when you drop the link to the basket, you are prompted to select a TimelyWeb folder to place the link to.



- *Drop to selected folder* – if this option is set, when you drop the link to the basket, the link is placed to a pre-selected folder of TimelyWeb.
- *Drop to root folder* – if this option is set, when you drop the link to the basket, the link is placed to the root TimelyWeb folder.
- *Transparency level* – can be set if you are running Windows 2000 or Windows XP. Transparency level 255 makes the basket non-transparent.

### III.1.9. Sound

You can configure TimelyWeb to play a sound when the link is changed or error is detected. On the *Sound* page of TimelyWeb options you select what sounds will be played.

- Click the *Browse* button to select a sound file.
- Use *Disable all sounds* option to mute the application. The sound options are not cleared, so you will be able to return to previous settings by turning the *Disable all sounds* option off.

### III.1.10. Download

TimelyWeb supports integration with Reget, Net Vampire and GetRight download managers. On Download page you can specify paths to download managers' executable files. See more about integration with download managers on page 34.

- Click the *Browse* button to select the executable.
- Use *Load path from system registry* button to try to read the path from Windows registry.

### III.1.11. Browser

On the *Browser* page of TimelyWeb options you specify the browser that will be used to open the links. You can select –

- *System default browser* (the one that is used when you click on Internet links in different applications or help files);
- *MS Internet Explorer*;
- *Netscape Navigator*;
- *Opera*;
- *Mozilla*;
- *Other browser* (You will have to specify path to the browser's executable file).

Please note that if you have selected *system default browser*, a link from TimelyWeb may be opened in an existing browser window thus overriding its previous contents. To prevent this, select specific browser.

## III.2. Link Properties

Links have numerous properties; however, you don't need to review all of them when you set up a link. Some parameters can be defined globally, for all links at once. To do so, it is necessary that a link has *Use Extended settings* option turned off. Extended settings include check periods and error notifications. Use the Links -> Default link properties menu command to set up the common options.

### III.2.1. Main Link Properties

- *URL to monitor* – this is the location of resource that is monitored. Please refer to the detailed description on page 37.
- *Advanced HTTP* options are described in the IV.10. *Advanced HTTP Properties* on page 38.
- *URL to open* – this is the location to open if you tell TimelyWeb to open this link in browser. It may be different from the monitored link, because for some web pages you will want to monitor a specific sub-resource of a page, but you need to open the page itself.
- *Description* – description of the link. Here you can put any text that will remind you later what is the link for. The experience of the current users tells us that it is not reasonable to leave the description empty. Let the description be the most brief but meaningful information about this link. Do not delay filling the link's description field, or you may forget to do it later.
- *Disable link check* – enables or disables monitoring of the link. When you need to temporarily disable monitoring of the given link, you can use this check box to mark the link as 'disabled'. A disabled link is not automatically checked for updates and errors; however, you can always check the link manually.
- *Use extended settings* – overrides default link properties (check period and update and error notifications). When you check this box, *Check period* and *Notifications* pages appear. When a specific link needs special settings of the check period and set actions on the link change or error, you have to check *Use Extended Settings* and edit the settings using the appropriate Link properties pages.
- *Use content analysis* – enables or disables content analysis. Content analysis is useful when the resource time and/or size cannot be determined or when only some part of the text is important. See more about it in IV.14. *Using Web Page Content Analysis* on page 42.
- *Track differences in Web pages* – enables or disables difference tracking. Please refer for the details to IV.15. *Web Page Difference Highlighting* on page 44.

### III.2.2. Login to Server

Here you specify user name and password necessary to access the password-protected web resource. If the link is protected, you have to enter the your username and password so that TimelyWeb is able to access the resource. Note that if you don't specify username and password, the link will be marked as erroneous, and no further checking will be done.

### III.2.3. Check Period

This page is visible when you check *Use extended settings* on the *Main* page of the Link properties. Its contents are identical to the *Check period* page in the *Default link properties* dialog –

- *Check period* – determines how often the link is checked. You can also limit checks to certain time of day (specifying when the period starts and when it ends) and certain days of week. Please note that if you have specified use of dial-up connection in the application options (page 20) and no connection is present at the time to check the link, no check will occur unless TimelyWeb is set to use [EldoS 2Connect](#) to establish connection itself.

- *Check on startup* – determines whether the link will be checked when TimelyWeb is started. If this option is on, after TimelyWeb is started each link will be scheduled for immediate check. Please note that if you have specified use of dial-up connection in the application options (page 20) and no connection is present when TimelyWeb is started, no check will occur unless TimelyWeb is set to use [EldoS 2Connect](#) to establish connection itself.
- *Check at any period of day* – if you uncheck this option, you will be able to specify the interval of the day when check is allowed. This way you limit checks to certain time of day (specifying when the interval starts and when it ends) and certain days of week. Please note that if you have specified use of dial-up connection in the application options (page 20) and no connection is present at the time to check the link, no check will occur unless TimelyWeb is set to use [EldoS 2Connect](#) to establish connection itself.
- *Check on any day of week* – if you uncheck this option, you will be able to specify the days of week when check is allowed. Please note that if you have specified use of dial-up connection in the application options (page 20) and no connection is present at the time to check the link, no check will occur unless TimelyWeb is set to use [EldoS 2Connect](#) to establish connection itself.

### III.2.4. Notifications

This page is visible when you check *Use extended settings* on the *Main* page of the Link properties. Its contents are identical to the *Notifications* page in the *Default link properties* dialog.

When TimelyWeb detects change of resource being monitored, or an error occurs, you will be notified in one of the following ways –

- *play a sound*;
- *show notification window*;
- *send e-mail notification*. You can set e-mail delivery options in the application options (page 21). See more in *IV.16. E-mail and SMS Notifications* on page 44).

Also some actions can be taken –

- *copy resource address (URL) to clipboard*;
- *open the link in browser* automatically;
- *show web page changes* that have been previously tracked (see *IV.15. Web Page Difference Highlighting* on page 44);
- *update screenshot*. You can enable screenshots in the application options (page 19). See more in *IV.13. Making Web Site Screenshots* on page 42).
- *download file automatically* using download manager (see *IV.7.3. Integration with Download Managers* on page 34);
- *execute an external application*;
- send a message via local area network (see *More ...*)

If you want to change the notification type, invoke *Default properties* dialog using the *View* menu and set the notification type on the *Notifications* page. See more about notifications in *IV.8. System Notifications* on page 34.

**Note:** The above changes won't affect the links with *Use extended settings* option turned off.

### III.2.5. Analysis

This page is visible if you turn *Use contents analysis* option on the *Main* page. See more in IV.14. *Using Web Page Content Analysis* on page 42.

### III.2.6. Status

On the *Status* page you will find the following information –

- *Current status* – this field displays the state of the link.
- *Size of the link contents* – this is the size of the resource referenced by the link.
- *Last changed* – this is the date and time of the resource on server. Some servers don't report this information, so the field may be blank. In this case you may consider using context analysis for more correct monitoring.
- *Last checked* – this is the time of the most recent attempt to check the link.

### III.2.7. Memo

Here you can place any information about the link. This is different from the description of the link that will be displayed in the links' tree. Use the *Memo* page to enter more verbose description that will be displayed in the *Notes* box in the left panel (see page 12).

### III.2.8. Screenshot

TimelyWeb is capable of taking small screenshots of web pages being monitored. To use this feature, you need to enable screenshots in the application options (page 19), otherwise the *Screenshot* page will not be visible.

Click the *Reload Now!* button to update the screenshot. To allow automatic updates of screenshots, turn the *Update screenshot* option on (*Notifications* page in the default link properties or in link properties, see page 25).

## III.3. Folder Properties

TimelyWeb folders have the following properties –

- *name*;
- *description*.

For easier navigation in folders with links, it is reasonable to add explicative descriptions to folder names. For instance, a folder with links to different antiviral software could be named 'Antiviruses' and described as 'Antivirus software and news'.



# **Part IV. Doing Things**



## IV.1. Link States

Link can be in one of the following states: *never checked*, *not modified*, *modified*, *not found*, *connection error*. If the link is marked as modified, you can reset its state to *not modified* either manually via *Links* menu or automatically when you open a browser. Automatic reset is turned on globally in application options (see page 19).

## IV.2. Managing Links

### IV.2.1. Adding a New Link

Adding new links is easy and can be done from TimelyWeb or a browser window, or even from any other application!

To add a new link you can –

- press the *Add New Link* button on the toolbar;
- use *Links -> Add new Link* menu command;
- press *Ins* key when you are in main TimelyWeb window;
- drag a link from a browser window or any other application to the basket (see *IV.12. Using Drop Basket* on page 41);
- use *TimelyWeb* toolbar button or *->TimelyWeb* context menu item in Internet Explorer (see *IV.7.2. Integration with Browsers* on page 34). In this case the description for the new link can be added automatically from the page title (you need to enable this option in the application options, see page 19).
- If you see a web page with *Add to TimelyWeb* link and TimelyWeb logo near this link, you can click on this link, and the page will be added for monitoring automatically.

The new link will be created in the currently focused folder (or in the folder of currently focused link).

After that the dialog box will appear prompting you to enter the name of the link and customize its properties.

### IV.2.2. Checking Links

The links are checked automatically once a period that is specified in links' properties (see *III.2.3. Check Period* on page 24).

Also you can check a link at any time using the following procedure:

1. Select the link you want to check.
2. Click the *Check the link* button on the toolbar, or  
use *Links -> Check* menu item, or  
press *F8*.

You can adjust check period in the Link Properties dialog (see page 23; make sure that *Use Extended Settings* option is on). You can also set default check period in the default links' properties (menu *Links -> Default link properties*).

If a link is marked as modified, it is not checked again unless you have *watch already modified links* option set in the application options (page 19). Normally you won't recheck already modified links in order to make sure you don't forget to go to the link and review the update.

### IV.2.3. Deleting a Link

To delete the link, press the "Delete Link" button on the tool bar, or  
use Edit -> Delete menu item, or  
press Del.

When you do so, you will be prompted for the confirmation. If you like, you can turn off the confirmation in the application options (page 19); however, it is better to keep this confirmation on to help you keeping important links safe.

## IV.3. Managing Folders

The web resources you are interested to monitor usually break down into several categories that can help you organizing your work. It is reasonable to group resources of categories in separate folders.

To do so,

1. create a folder and name it according to the chosen category;
2. drag all links of the category to this folder;
3. if necessary, add new links to this folder.
4. repeat from step 1 until all links will be categorized.

### IV.3.1. Creating a New Folder

To create a new folder, click the *Create folder* button on the toolbar, or  
use Links -> Create folder menu item

**Note:** Please note that a new folder will be created as a sub folder of the currently focused folder. In order to create a folder of the first level, focus to the first line in the list named *All interests*.

After that the dialog box will appear prompting you to name and describe the folder.

### IV.3.2. Deleting a Folder

To delete a folder,  
click *Delete folder* button, or  
use Edit -> Delete menu item, or  
select the folder and press Del.

**Note:** The focused folder or the folder with the focused link will be deleted. All folder contents will be deleted too.



## IV.4. Changing Options and Properties

### IV.4.1. Changing Application Options

To change application options, you use View -> Options... menu item. The application options dialog will appear. See *III.1. TimelyWeb Options* on page 19 for how to use the application options.

### IV.4.2. Changing Link Properties

To change the link properties, do the following –

1. Focus to the link;
2. Invoke Link properties dialog. To do so,  
click *Properties* button on the toolbar, or  
use Edit -> Properties menu item, or  
press F4 (make sure that the proper link is focused).

See *III.2. Link Properties* on page 23 for how to use link properties.

### IV.4.3. Changing Default Link Properties

To change a link's properties used by default, invoke Default Link properties dialog by Links -> Default link properties menu item. Please see *III.2.3. Check Period* and *III.2.4. Notifications* on page 24 for details.

### IV.4.4. Changing Folder Properties

To change a folder properties, do the following –

1. Focus the folder;
2. Invoke Folder properties dialog. To do so,  
click the *Folder properties* button on the toolbar, or  
use Edit -> Properties menu item, or  
press F4 .

See more about folder properties in *III.3. Folder Properties* on page 26.

## IV.5. Search

You can search for any text string in your links, and TimelyWeb supports search in the link URLs, descriptions and long descriptions.

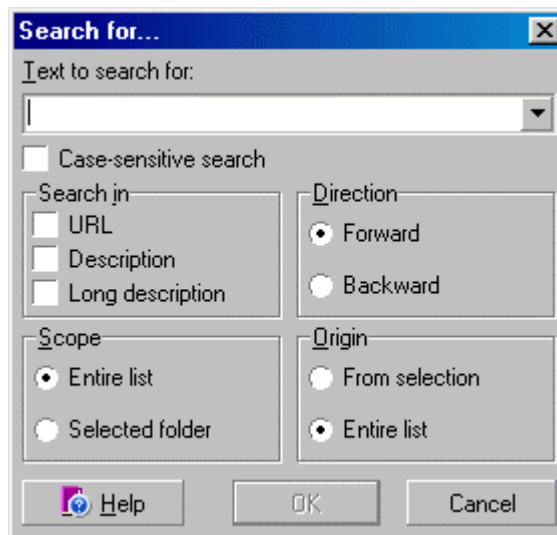
To start a search, use Edit -> Find menu item, or

press Ctrl+F.

The *Search for...* dialog will appear where you can choose the search options. Click OK button to find the first occurrence.

Now you can go through all the following occurrences of the search text by using Edit -> Find Next menu item, or

pressing F3.



## IV.6. Load and Save

TimelyWeb supports an original file format that allows you to save the links' tree you create in the application. This tree will be loaded automatically on start of the application. You can save the links by clicking the Save button on the toolbar, or

using menu File -> Save, or

pressing Ctrl+S.

EldoS TimelyWeb can also import and export links in several formats. Import and export functionality is accessible via main menu, File -> Export and File -> Import commands.

### IV.6.1. Importing Links

You can import links from files of the following formats:

- ✓ Plain list of links. Such list consists of links, one per line.
- ✓ Raw link import. In this mode the input file is parsed for WWW and FTP URLs and all URLs that were found are imported.
- ✓ Import from Internet Explorer Favorites. In this mode you can import your collection of favorite web pages.

To perform import of links, choose File -> Import command from the main menu (the import wizard will appear).

On the first page of the wizard, you have to select one of the three options –

- *File with links list* (plain list of links). After you select this option and click the *Next* button, you specify files to be imported on the second page of the wizard. Press *Finish* to perform import.
- *File with links* (raw link import). After you select this option and click the *Next* button, you specify files to be imported on the second page of the wizard. Press *Finish* to perform import.

- *Internet Explorer favorites.* After you select this option and click the *Next* button, you will be prompted to specify the folder with IE favorites. Normally you use the default folder (when you import IE favorites from your computer), or alternatively you can select another folder with favorites saved from another system. Click *Finish* to perform import.

### IV.6.2. Exporting Links

You can export links to files of the following formats:

- ✓ Plain list of links. Such list consists of links, one per line.
- ✓ Internet Explorer Favorites. In this mode you can export your collection of monitored links to the Internet Explorer or to some other application that can import data from Internet Explorer Favorites
- ✓ HTML page. This lets you to create a series of HTML pages that contain all or selected links.

To perform import of links, choose File -> Export command from the main menu (the export wizard will appear).

On the first page of the wizard, you have to select one of the three options –

- *Simple links list.* On the next page of the wizard, you can choose what data will be included to the list (URL, description) and specify the name of the file to export to. Press *Finish* to perform export.
- *Internet Explorer Favorites.* On the next page of the wizard, you choose to use default folder (if you want to export links to IE favorites on your computer) or select a custom folder (when you want to transfer links to some other application or export links to another computer). Press *Finish* to perform export.
- *Generate web pages.* On the next page of the wizard, you select a template file that will be used for generation, and choose how many links will be placed on single page. Press *Finish* to perform export.

## IV.7. Working with Browsers

EldoS TimelyWeb supports integration with several popular browsers and download managers in order to make your web link management easier.

### IV.7.1. Opening a Link in Browser

You can configure TimelyWeb to open a link in a browser automatically. To use this feature, you specify a browser to be used in the application options dialog (see *III.1.11. Browser* on page 23).

Depending on the type of resource you are using, the browser offers you to download this resource to your computer or to perform some other action. Make sure to check how your selected browser behaves when trying to open the link before using this feature.

### IV.7.2. Integration with Browsers

EldoS TimelyWeb supports integration with Internet Explorer 4 and better. When you are using Internet Explorer (IE), you can configure TimelyWeb to –

- add a button to IE toolbar. When you click this button, the address of the page displayed in IE is added to TimelyWeb for monitoring;
- add a menu item to IE context menu. Context menu is the one that is displayed when you right-click over some link. When you select this menu item, the link will be added to TimelyWeb for monitoring.

When you add a link using a button or menu item, description of the link can be imported from the page title and the link text respectively. You can enable this options in the application options (see *III.1.11. Browser* on page 23).

You can enable or disable the integration with Internet Explorer in the application options (see *III.1.1. Main Options* on page 19). Make sure to restart Internet Explorer after switching the integration feature in order to make changes come into effect.

### IV.7.3. Integration with Download Managers

EldoS TimelyWeb can automatically download the resource using one of the supported download managers. The supported download managers are Reget, NetVampire and GetRight.

Integration with other download managers like GetRight and GoZilla is planned for next versions of TimelyWeb.

We recommend you to use Reget, the award-winning download manager with some really effective features that are missing in other download managers.

You can configure integration (e. g. specify path to NetVampire and GetRight) using application options (see *III.1.10. Download* on page 23).

## IV.8. System Notifications

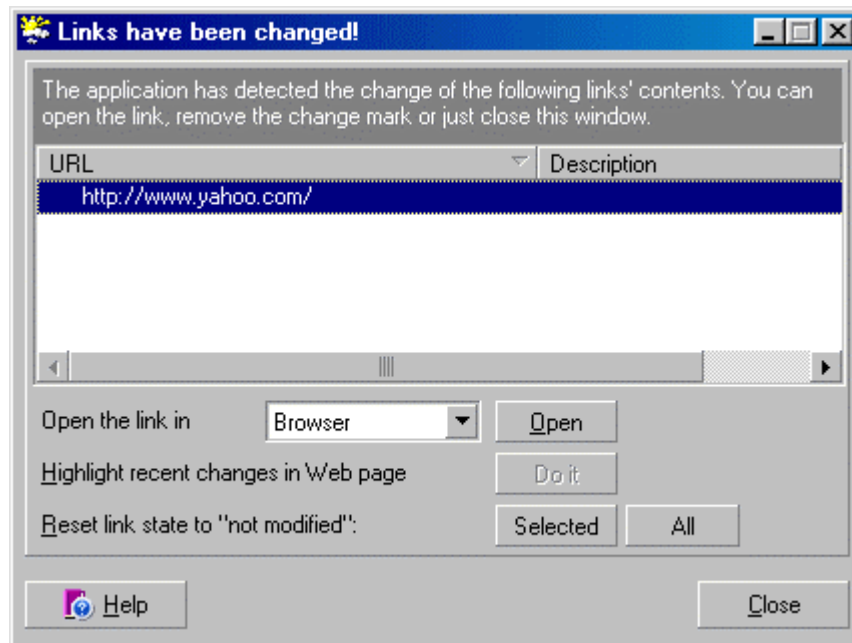
EldoS TimelyWeb can notify you about resource change or error during attempt to check the resource for modifications. TimelyWeb can –

- play a sound;
- show the notification window;
- perform an automated action:
- copy resource location (URL) to the clipboard;
- open link in browser automatically;
- automatically schedule resource download using a download manager;
- update web site screenshot;
- send e-mail notification

Usually you specify what actions are taken in the Default link properties (menu item Links -> Default link properties). If necessary, you can configure notifications for every link using Link properties (make sure the *Use extended settings* option is on for the chosen links).

### IV.8.1. Listing Changed Links

When TimelyWeb detects a resource update, it can notify you with a pop-up window with the list of links that were changed (see *III.2.4. Notifications* on page 25).

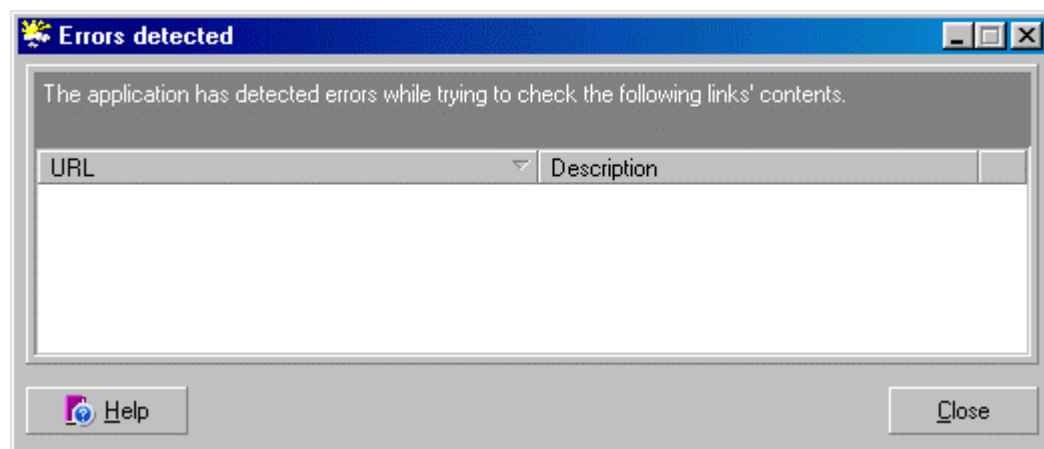


This visual way is very handy to –

- see the name and description of the changed link;
- immediately open the link in a browser window;
- command a download manager to download the resource;
- just close the window;
- mark the link as unchanged;
- close the window and mark all links as unchanged.

### IV.8.2. Listing Errors

When TimelyWeb detects an error, it can notify you with a pop-up window with the list of errors (see *III.2.4. Notifications* on page 25).



### IV.8.3. Execution of External Applications

When TimelyWeb detects a resource update, it can execute external application. To enable this feature, check the *Execute external application* option on in the Notifications page. This page is available globally in the Default link properties dialog (Links -> Default link properties menu item) or locally in the Link properties when you override the default options (set the *Use extended settings* option on in the Link properties, see page 24).

To set up the application execution, you specify its name and optionally some parameters. In other words, you specify the external application's command line. The command line may contain macros that are expanded with values for the link that was changed.

Macro is inserted as %mMacroName where MacroName is one of predefined macro values. When the command line is to be executed, the whole macro (including %m and braces) is replaced by the value calculated using the macro name. For example,

```
net send * %mDESC (%mURL) was updated
```

will be resolved as

```
net send * TimelyWeb homepage (http://www.timelyweb.com/) was updated
```

The predefined macros are –

- DESC – short description of the link;
- URL – address of the link.

**Note:** Macro names are currently not case sensitive; however this may change in future, so it is recommended to use the exact spellings.

### IV.8.4. Network Messages

When TimelyWeb detects a resource update or an error, it can send a notification message via LAN (local area network). To enable this feature, check the *Send network messages* option on in the Notifications page. This page is available globally in the Default link properties dialog (Links -> Default link properties menu item) or locally in the Link properties when you override the default options (set the *Use extended settings* option on in the Link properties, see page 24).

To configure the message sending, you specify one or more recipients and the message text. **Note:** Recipients should be destination computer names, not the user names.

You can specify a domain name to send the message to all computers of the specified domain, or specify \* as a domain to send the message to all computers in the primary domain.

The message text may contain macros that are expanded with values for the link that was changed.

Macro is inserted as %mMacroName where MacroName is one of predefined macro values. When the command line is to be executed, the whole macro (including %m and braces) is replaced by the value calculated using the macro name. For example,

```
%mDESC (%mURL) was updated
```

will be resolved as

TimelyWeb homepage (<http://www.timelyweb.com/>) was updated

The predefined macros are –

- DESC – short description of the link;
- URL – address of the link.

**Note:** Macro names are currently not case sensitive; however this may change in future, so it is recommended to use the exact spellings.

## IV.9. Resource Addresses

### IV.9.1. Forming Resource Addresses

An address is a location (URL) of the resource that is being monitored. If you are adding a link manually, you need to specify the URL. When the link is added using the Basket or the context menu item in the Internet Explorer, the address is imported automatically.

The address is the only mandatory field in the link properties. Other properties will be set to default values automatically.

An address usually looks like `xxx:yyy/zzz`, where

- `xxx:` – the protocol name. e. g. `http://`, `https://` or `ftp://`. **Note:** The protocol should be specified for TimelyWeb to work correctly.
- `yyy` – the server address, e. g. `www.yahoo.com` or `ftp.cdrom.com`.
- `zzz` – the resource location, e. g. `/pub/`.

For example, `http://www.yahoo.com/` or `ftp://ftp.cdrom.com/pub/` are valid Internet addresses. You can set partial addresses also, but the protocol should be specified.

Note that with links to FTP resources EldoS TimelyWeb can monitor both files and directories on a server. For instance, you can add a link to `ftp.cdrom.com/pub/`, and when any file in this directory is changed, added or deleted, you will be notified.

### IV.9.2. Using Macros in Addresses

Starting from version 3.2, EldoS TimelyWeb supports macros in URLs. Macros let you monitor URLs that are changed from time to time or wait for some resources to appear (for example, if you want to get a fresh issue of the online magazine, you can monitor the link of the monthly issue page. Such link usually includes the number or the month of the magazine release).

Macro is inserted as `%m{MacroName}` where `MacroName` is one of the predefined macro values.

When the URL is to be monitored, the whole macro (including `%m` and braces) is replaced by the value calculated using the macro name. For example, `http://www.journal.org/issue-%m{CUR_YEAR_4}.html` will be resolved as `http://www.journal.org/issue-2002.html`.



The predefined macros are –

- CUR\_DAY – today's day of month number in short format (i. e. 1 for the first day of month);
- CUR\_DAY\_Z – today's day of month number in 2-digit format (i. e. 01 for the first day of month);
- PREV\_DAY – yesterday's day of month number in short format (i. e. 1 for the first day of month);
- PREV\_DAY\_Z – yesterday's day of month number in 2-digit format (i. e. 01 for the first day of month);
- CUR\_MONTH – current month number in short format (i. e. 1 for January);
- CUR\_MONTH\_Z – current month number in 2-digit format (i. e. 01 for January);
- PREV\_MONTH – yesterday's month number in short format (i. e. 1 for January);
- PREV\_MONTH\_Z – yesterday's month number in 2-digit format (i. e. 01 for January);
- CUR\_YEAR\_2 – current year number in 2-digit format (i. e. 02 for year 2002);
- CUR\_YEAR\_4 – current year number in 4-digit format (i. e. 2002 for year 2002);
- PREV\_YEAR\_2 – yesterday's year number in 2-digit format (i. e. 02 for year 2002);
- PREV\_YEAR\_4 – yesterday's year number in 4-digit format (i. e. 2002 for year 2002).

Yesterday's values are important when the resource is available only the next day: for example server log for 1 Jan 2002 is available only on 2 Jan 2002, and to track when resource is available, you need to use `PREV_*` macros.

**Note:** Macro names are currently not case sensitive; however this may change in future, so it is recommended to use the exact spellings.

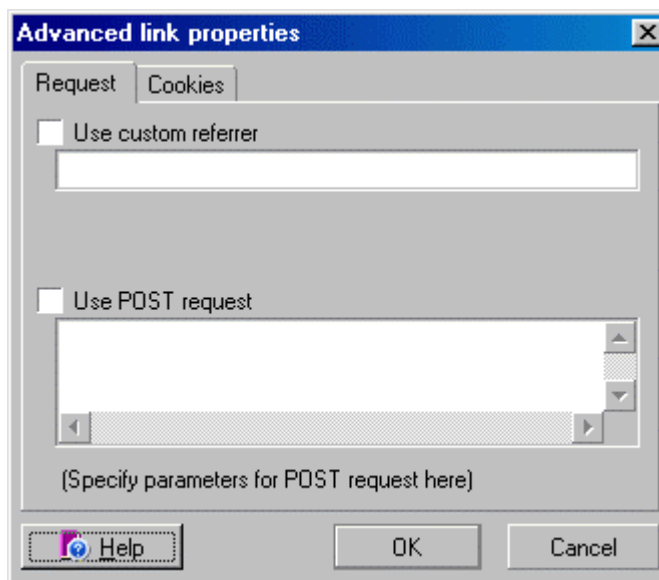
## IV.10. Advanced HTTP Properties

When checking HTTP links, you can set custom referrer string or tell TimelyWeb to use POST request and specify parameters for such request. The advanced properties are invoked using the *Advanced HTTP* button in the main link properties (see page 24).

### IV.10.1. Custom Referrer

A referrer is a field in HTTP request that tells a server where the client has obtained the link he is requesting. In other words, this is the way a servers 'learns' about 'from whom did you learn' the address of the resource you request. Some servers require specific referrer to be specified (a sort of security feature).

If you can reach the page with a browser but get a server-generated error when using TimelyWeb, you can try to find out the right value for referrer and specify it here.





### IV.10.2. POST Request

Usually data is requested using the `GET` command. However some pages can only be accessed after you provide some information to server (`POST` this information); for these cases you use the *Post request* option.

Post request parameters are specified as parameter-value pairs:

Param1=value1

Param2=value2

...

ParamN=valueN

TimelyWeb will post all parameters as specified.

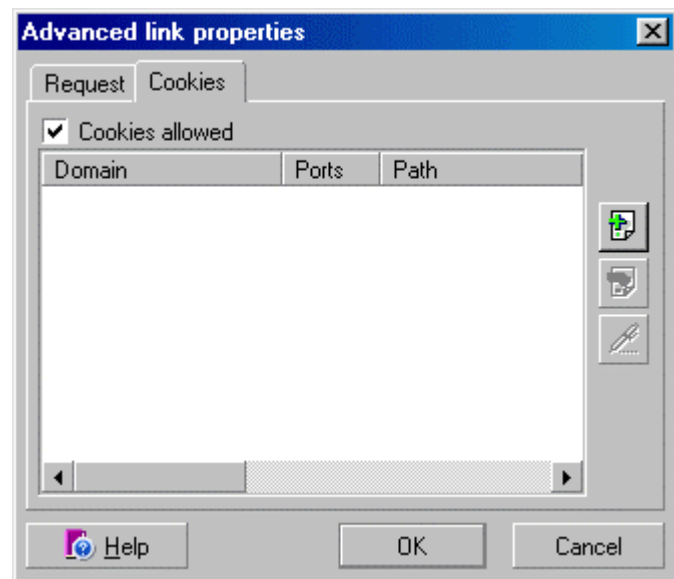
### IV.10.3. Cookies

Cookies are small pieces of information that are stored by a server on the client side and later sent back to server by the client. Cookies are used to save information that should not be lost between requests to the same page or the same site.

For example, when you go shopping in an electronic store, you need to keep your basket when you navigate through the store. The server stores information about your basket in cookies associated with the site, and your browser sends them back to the server when you go to next page or to the checkout. Some servers use cookies to store your ID information, so you don't need to enter your username and password next time you visit the site.

You can add the cookies manually using cookie manager that is located in *Advanced HTTP* properties dialog. Each cookie consists of a name and a value. The cookie can be applied to a single document, to a directory or to the whole site. To specify the target, use the *Path* parameter.

**Note:** Cookies must be enabled if you use Extended Login feature for a link (see IV.11. Extended Login on page 40).



## IV.11. Extended Login

Extended login lets you monitoring pages that are accessible only after you fill some login form on a separate page.

### IV.11.1. What is Extended Login

Extended login feature queries one or more URLs, optionally passing the data to an URL, and gets the cookies from the server. Those cookies are later used to access the actual page that is to be monitored. Please note that cookie management must be turned on for the whole application (in the application options, see page 19) and for the monitored page (in the *Advanced HTTP properties* (see IV.10.3. Cookies on page 39) in the main link properties, see page 24).

### IV.11.2. How to Use Extended Login

To use extended login, you have to do the following.

1. Find out the URL of the page that is used to enter login information (usually user name/id and password). This is the page that will be added as *Extended login URL* in the Extended Login dialog (see III.2.2. *Login to Server* on page 24).
2. Take a look through the page source to find out which method is used to send the user name and password to the server. This requires from you some knowledge of HTML. In brief, the text `<form ... method="post">` means that the data are sent using POST method, while `<form ... method="get">` says about the GET method. Select the method in Extended Login dialog.
3. Find out the parameters that are sent. Usually they look like `<input type="text" name="XXX">` and `<input type="password" name="YYY">`. You have to take these XXX and YYY and create the parameters to be passed. In the *Parameters* box of Extended Login dialog you enter  
 XXX=<your user name or user id or whatever you are asked for>  
 YYY=<your password>  
 where XXX and YYY are the names of the corresponding fields in the HTML form.
4. You can optionally specify a referrer page URL. This is the page from which you usually get to login page. This can be a home page of the site or some 'member login' page, etc.

All this information has to be set for one specific extended login URL.

The screenshot shows a Windows-style dialog box titled "Extended login URL". It has a close button (X) in the top right corner. Inside the dialog, there are three text input fields: "Login to this URL:", "Referer field value (optional):", and "Login parameters:". Below the "Login parameters:" field, there are two radio buttons: "Use GET request" and "Use POST request", with "Use POST request" being selected. At the bottom of the dialog, there are three buttons: "Help" (with a question mark icon), "OK", and "Cancel".

### IV.11.3. Multi-level Extended Login

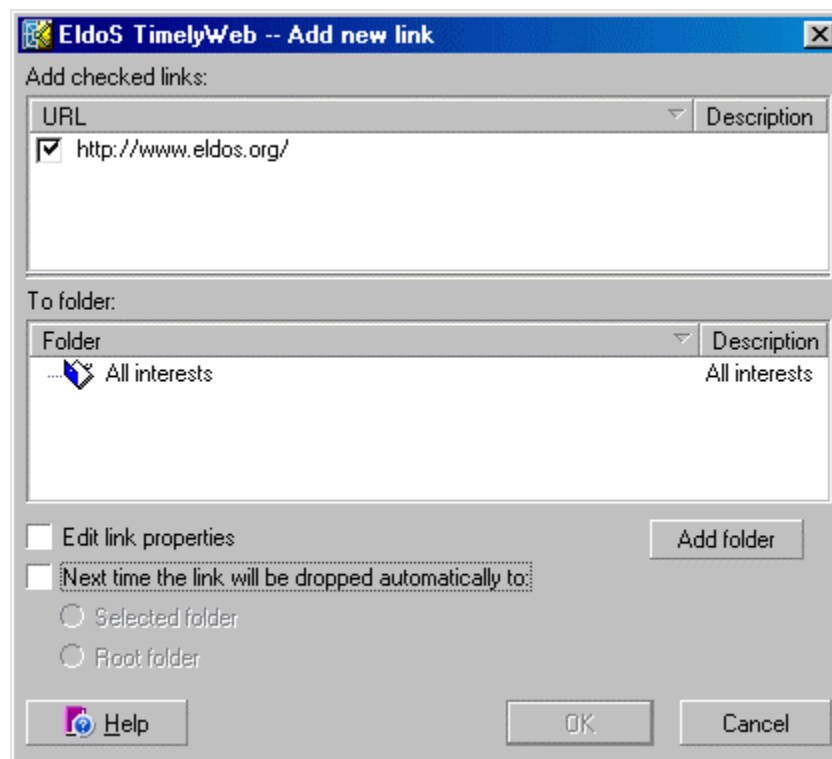
There are much more complex sites that require you to use some title page, then proceed to login page and then get to the actual site. How do you know that you have come across such site? Copy a login URL and paste it to the address field of the browser. Then press Enter key to go to this location. If you finally are brought to some 'welcome' or 'title' page instead of the login page you wanted, then this is the case! Such kind of sites requires a multi-level login. This is not a problem for TimelyWeb! You can enter as much extended login URLs as necessary. Not all of them require parameters to be passed. In this case leave *Parameters* box blank.

Not all the complex login scenarios can be handled by TimelyWeb. Some sites have dynamically generated URLs for login pages, which can not be saved in TimelyWeb. Other sites pass dynamic information in the text of web pages and require it to be passed back in some way. Such sites can not be handled either. One of examples is Yahoo Mail that attempts to block any automatic logins.

## IV.12. Using Drop Basket

Using the drop basket is easy. First you need to make the basket visible and adjust its transparency (Windows 2000 and XP only) in the application options (see page 22). When the drop basket is visible, you can drag a link from a browser or other application and drop it to the basket. To drag a link, press left mouse button when mouse cursor is over the link, hold the button and move the mouse so that cursor is over the drop basket. Release the mouse button.

When you drop the link to the basket, the window appears.



You can choose to which folder the links will be added to, whether you want to specify link properties after this window is closed, and whether you want to see this window next time or let the links be dropped automatically to some folder.

If you specify to drop the links automatically, next time this window will not appear. You can bring the window back using the application options (see page 22).

## IV.13. Making Web Site Screenshots

EldoS TimelyWeb is capable of taking small screenshots of web pages being monitored. To use this feature, you enable *Make screenshots* option in the application options (see page 19).

You can allow the screenshots to be updated automatically by setting *Update screenshot* option in Default link properties (Link -> Default link properties menu item). You can also update screenshots manually with *Update Now!* button in the Link properties dialog on the Screenshot page (see *III.2.8. Screenshot* on page 26).

**Note:** Screenshots feature requires Internet Explorer 5.0 or better.

## IV.14. Using Web Page Content Analysis

There are web pages that, if TimelyWeb uses regular modification checking techniques, will be reported as modified though no actual modification of significant contents took place.

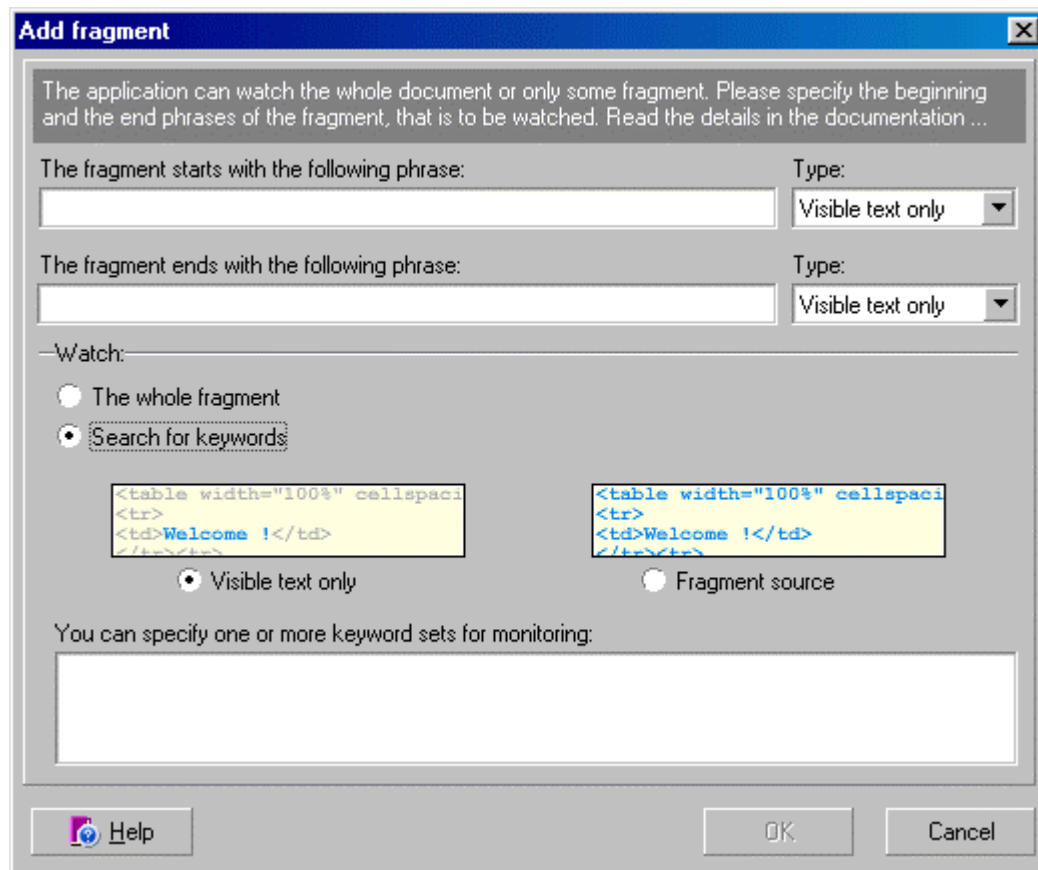
These pages can be split into two groups:

- resources for which TimelyWeb is not able to get the time and/or size;
- resources that are really changed but the changes are not important for you.

TimelyWeb is capable of handling both types of pages for you.

In the first case you just need to set *Use content analysis* option on in the Link properties dialog (see page 24). Instead of checking the time and the size of the resource, TimelyWeb will download the resource and compare it with the copy that was download during the previous check.

In the second case, when you need to monitor only some specific changes (for example, you need to monitor changes in a specific part of a web page), you can help TimelyWeb a little bit by specifying blocks of page contents that must be included to or excluded from monitoring. This is done on *Analysis* page in Link properties dialog (see page 26). You add one or more rules that define the beginning and the end of fragment to include or exclude. The fragment can be defined as you see it in a browser window (only visible text) or as source code block (HTML page source).



To specify the block to be included or excluded, you need to define the beginning and the end of the block as follows:

```
<MyTag>This is sample data</MyTag>
```

To include or exclude This is sample data data block, you add <MyTag> as the beginning of the block and </MyTag> as the end of the block.

Naturally, if the data changes and <MyTag> or </MyTag> are not found, the block will not be detected. This means that you need to select the beginning and the end of block in such a way that they are not likely to be changed or removed.

#### IV.14.1. Keywords Monitoring

From version 3.3 on TimelyWeb supports watching for keywords. There are cases when even watching for content fragments is not enough – if you need to know when some words or phrases appear on the web page. In this case you need to specify that only a set of keywords is to be watched.

You can define one or more keyword watch rules that include present and not present keywords. For example, you specify keyword sets as follows –

```
+include_word_1 +include_word_2 -exclude_word_1 -exclude_word_2
+include_word_3 +include_word_4 -exclude_word_3 -exclude_word_4
```

This is how the above setting processed:

The fragment is considered as updated if at least one of the two keyword rules is true –

- `include_word_1` and `include_word_2` are present in the monitored resource, and `exclude_keyword_1` and `exclude_keyword_2` are not present; or
- `include_word_3` and `include_word_4` are present, and `exclude_keyword_3` and `exclude_keyword_4` are not present.

## IV.15. Web Page Difference Highlighting

EldoS TimelyWeb is able to track differences between web page revisions and highlight these pages. In other words, when some content on the web page is changed, you can see old and new variants at the same time.

To use difference tracking, check *Track differences in Web pages* option in the Link settings (see page 24). When a change is detected, you can open the web page with all differences highlighted in one of two ways –

- manually using Links -> Open -> Highlight changes menu command, or
- automatically if you enable *Show recent web changes* option on the Notifications page (see page 25). This page is available globally in the Default link properties dialog (Links -> Default link properties menu item) or locally in the Link properties when you override the default options (set the *Use extended settings* option on in the Link properties, see page 24).

Note that if a link uses extended settings, the default link properties are not applied to this link.

## IV.16. E-mail and SMS Notifications

When some resource is updated or an error occurs, you can be notified by an e-mail or SMS message. You will receive a message with resource name and time of change (or error code and description).

To enable e-mail or SMS notification, do the following:

1. configure e-mail delivery in the application options (see *III.1.5. E-Mail* on page 21);
2. enable e-mail notification either in the Default link properties dialog (Links -> Default link properties menu item), or in the Link properties when you override the default options (set the *Use extended settings* option on in the Link properties, see page 24).

Note that if a link uses extended settings, the default link properties are not applied to this link.

For a specific link, you can use one of two notification methods – e-mail or SMS. Both of them are actually sending e-mail messages, but the letter format is different.

For e-mail notification (*Use SMS format* option is off), the complete template is used (see page 21). Template includes description of the link (or description of error) and a regular `To:` address (the address of the recipient) is used to send the message.

The SMS format is used to send messages to mobile phones and sometimes pagers. In this case TimelyWeb uses a compact message template and the SMS `To:` address (the address of the recipient).

Usually you use your mobile number as a 'name' of the e-mail address. For example, your mobile phone number is 3108432. Your mobile communications company runs an e-mail-to-sms gateway, and they told you to use @sms.celltelecom.net as a domain name. Then you need to put 3108432@sms.celltelecom.net as SMS To: address.

Please note that in some cases you need to put your mobile number with you country and area code, so your address may look like

```
1-435-3108432@sms.celltelecom.net or
14353108432@sms.celltelecom.net.
```

Before you use TimelyWeb SMS feature, please consult your mobile communications provider about how to deliver SMS by e-mail. Then use the advised address as SMS To: address in TimelyWeb.

#### *IV.16.1. Recipient Address*

You can specify one or more addresses in the To: field. Use semicolon (;) so separate addresses in the list. For example, johndoe@mycompany.com; billlee@affiliate.com.

You can also specify a filename of the recipient list. To do so, put @<full name of the file with addresses> into the To: field, for instance, @C:/Files\_recepients.lst.

The list file should contain only the list of addresses, one address per line, e. g.

```
johndoe@mycompany.com
billlee@affiliate.com
```

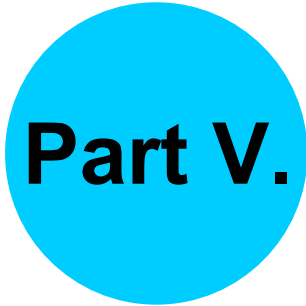
#### *IV.16.2. Remote Notification Templates*

There are two templates available – one for SMS and one for regular e-mail. Templates are located in the Template subfolder in the folder where TimelyWeb is located (C:\Program Files\EldoS\TimelyWeb\ by default). Current version of TimelyWeb does not support template editing; however, this feature is planned for future releases of TimelyWeb.

In any case you can modify templates using a text editor like NotePad; however you have to know exactly what you are doing to have the modified templates work properly. Also please note that when you install a new version of TimelyWeb, it will override your modifications.







# **Part V. Contact Information**



## V.1. TimelyWeb Feedback

You may want to contact our software support team in order to request some information, to report a bug or to suggest a new feature. This can be easily done by e-mail using the Help -> Feedback menu command. You can also visit the EldoS TimelyWeb home page <http://www.timelyweb.com> to check for updates, or send e-mail to –

- [support@eldos.org](mailto:support@eldos.org) – TimelyWeb technical support;
- [sales@eldos.org](mailto:sales@eldos.org) – TimelyWeb sales and registration questions;
- [info@eldos.org](mailto:info@eldos.org) – other questions.

If you have not found an answer to your question in this manual and the TimelyWeb help, please submit your question using the online form at <http://www.eldos.org/feedback.html> or send your question to [support@eldos.org](mailto:support@eldos.org). We will answer your question promptly.

## V.2. TimelyWeb Registration

You can use EldoS TimelyWeb without purchasing a license when you need to monitor no more than 10 links. If you want to monitor more than 10 links, you need to purchase a license.

The price of one single-user license is only \$29.95 <sup>(1)</sup>; we also offer flexible volume discounts system (see below).

---

<sup>(1)</sup> We keep the right to change the price without special notification; please check <http://www.timelyweb.com> for an update.

### V.2.1. How to Register

You can register the application –

- online (using secure internet connection);
- by faxing and order form;
- by phone call;
- by wire transfer;
- by check or cash.

If you don't receive the license and accompanying information during the defined time (two business days when registering online with a credit card, or two weeks when registering in other ways), please notify us immediately.

You can register EldoS TimelyWeb using –

<https://www.regnow.com/softsell/nph-softsell.cgi?item=2126-5>

or via secure registration service RegSoft –

<http://www.regsoft.net/purchase.php3?productid=44139>

(please use this latter link to get volume discounts!)

The above links offer you several ways of registering the software online, via phone call, wire transfer or other mentioned ways of registration.

Volume discounts offered via RegSoft registration service are <sup>(1)</sup>:

<b>Number of license copies</b>	<b>Cost of one license, USD</b>
2-4	24.95
5-9	19.95
10-24	14.95
25 or more	9.95
Site license	249.95

Use the following link to order the site license:

<http://www.regsoft.net/purchase.php3?productid=44139&pc=95w4F>

---

<sup>(1)</sup> We keep the right to change the prices and discounts without special notification; please check <http://www.timelyweb.com> for an update.



# Index

## A

Add new link button .....	15
Adding a New Link .....	29
Address .....	37
Advanced HTTP Properties .....	38
Analysis .....	26, 42

## B

Basket .....	22, 41
Browser .....	23
Browsers .....	33
Button	
Add new link .....	15
Check .....	16
Check all .....	16
Contents .....	16
Copy .....	15
Create folder .....	15
Delete .....	15
Disable .....	16
Exit .....	15
Open link in browser .....	16
Paste .....	15
Properties .....	15
Request information .....	16
Reset link state .....	15
Save .....	15
Sleep .....	16

## C

Changed Links .....	35
Changing Application Options .....	31
Changing Default Link Properties .....	31
Changing Folder Properties .....	31
Changing Link Properties .....	31
Changing Options and Properties .....	31
Check all button .....	16
Check button .....	16
Check Period .....	24
Checking Links .....	29
Confirmations .....	22
Connection .....	19
Contact .....	49
Contact Information .....	47
Content Analysis .....	42
Contents button .....	16
Cookies .....	39
Copy button .....	15
Create folder .....	15
Creating a New Folder .....	30
Custom Referrer .....	38

## D

Delete button .....	15
---------------------	----

Deleting a Folder .....	30
Deleting a Link .....	30
Dial-up .....	20
Difference Highlighting .....	44
Disable button .....	16
Doing Things .....	27
Download .....	23
Download Managers .....	34
Drop Basket .....	41

## E

Edit Menu .....	13
E-mail .....	44
E-Mail .....	21
Errors .....	35
Execution of External Applications .....	36
Exit button .....	15
Export .....	32
Exporting Links .....	33
Extended Login .....	40
External Applications .....	36

## F

Features .....	7
Feedback .....	49
File Menu .....	13
Filter .....	12
Find .....	32
Folder Properties .....	26
Foreword .....	4
Forming Resource Addresses .....	37

## H

Help Menu .....	15
Highlighting .....	44
Hot keys .....	16
How Does It All Work? .....	7
How to Register .....	49
How to Use Extended Login .....	40
How to Use TimelyWeb .....	8
HTTP Properties .....	38

## I

Import .....	32
Importing Links .....	32
Information Window .....	12
Integration with Browsers .....	34
Integration with Download Managers .....	34

## K

Keyboard shortcuts .....	16
Keywords Monitoring .....	43

## L

Left Panel .....	12
------------------	----

Link Properties.....	23
Link States.....	29
Link Window.....	11
Links Menu.....	14
Listing Changed Links.....	35
Listing Errors.....	35
Load.....	32
Login.....	40
Login to Server.....	24

## M

Macros	
Addresses.....	37
External Applications.....	36
Network Messages.....	36
Main Features.....	7
Main Link Properties.....	24
Main Menu.....	13
Main Options.....	19
Main Toolbar.....	15
Main Window.....	11
Managing Folders.....	30
Managing Links.....	29
Memo.....	12, 26
Menu	
Edit.....	13
File.....	13
Help.....	15
Links.....	14
main.....	13
View.....	14
Multi-level Extended Login.....	41

## N

Network Messages.....	36
Notes.....	12
Notifications.....	25, 34, 44

## O

<i>Open link in browser</i> button.....	16
Opening a Link in Browser.....	33
Options.....	19, 31

## P

Panel.....	12
<i>Paste</i> button.....	15
Pop-up menu	
Information Window.....	12
Link Window.....	11
Protocol Window.....	12
POST Request.....	39
Properties.....	31
Folder.....	26
Link.....	23

<i>Properties</i> button.....	15
Protocol Window.....	12
Proxy.....	20

## Q

Quick Tour.....	5
-----------------	---

## R

Recipient Address.....	45
Referrer.....	38
Registration.....	49
Remote Notification Templates.....	45
<i>Request information</i> button.....	16
<i>Reset link state</i> button.....	15
Resource Addresses.....	37

## S

Save.....	32
<i>Save</i> button.....	15
Screenshot.....	26
Screenshots.....	42
Search.....	32
Setting Up Parameters.....	17
Shortcuts.....	16
<i>Sleep</i> button.....	16
SMS.....	44
Sound.....	23
state.....	29
Statistics.....	12
Status.....	26
Support.....	49

## T

Templates.....	45
TimelyWeb Feedback.....	49
TimelyWeb Options.....	19
TimelyWeb Registration.....	49
Toolbar.....	15

## U

URL.....	37
User Interface.....	9
Using Macros in Addresses.....	37

## V

View.....	22
View Menu.....	14

## W

Web Page Content Analysis.....	42
Web Site Screenshots.....	42
What Is TimelyWeb™.....	7
Working with Browsers.....	33

