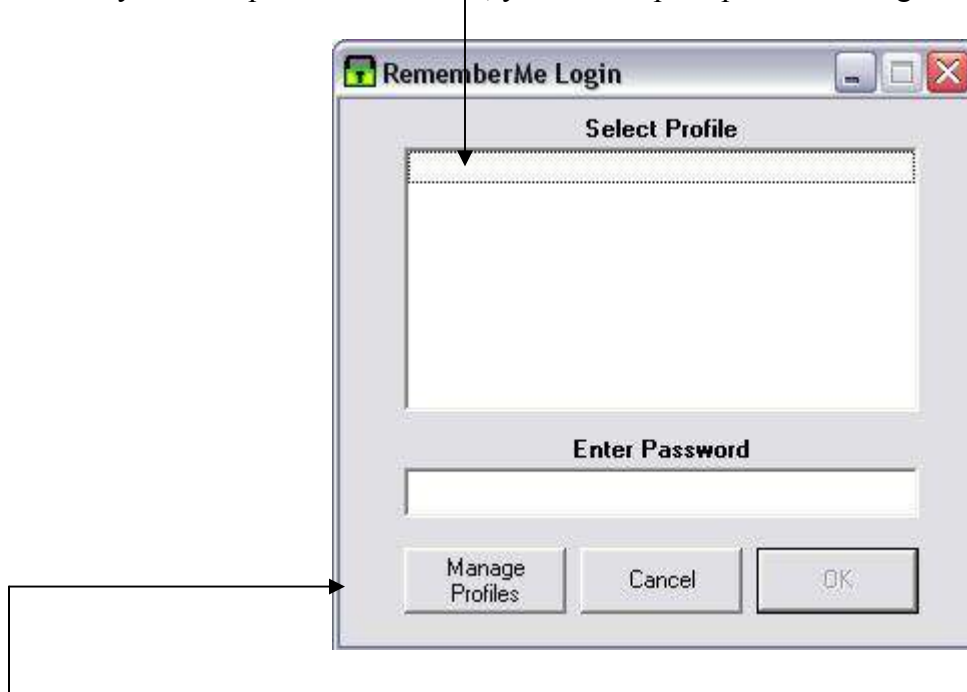


RememberMe 1.8

RememberMe is a free password manager.

When you first open RememberMe, you will be prompted with a login screen as shown:



Click the “Manage Profiles” button to add a new login profile

Click the “Add” button. You will be asked some information:

- ✓ **Profile Name:** - A unique name you will use to identify your login
- ✓ **Password:** - A password known only to you. This will be required to access your profile.

Once your profile has been created, you can go back to the login screen as shown and click your profile name and enter your password. Hit <enter> or click OK to begin login.

~See next page~

You will then be taken to the main screen of RememberMe, as shown:



Here is where you will setup and create your different categories and locations

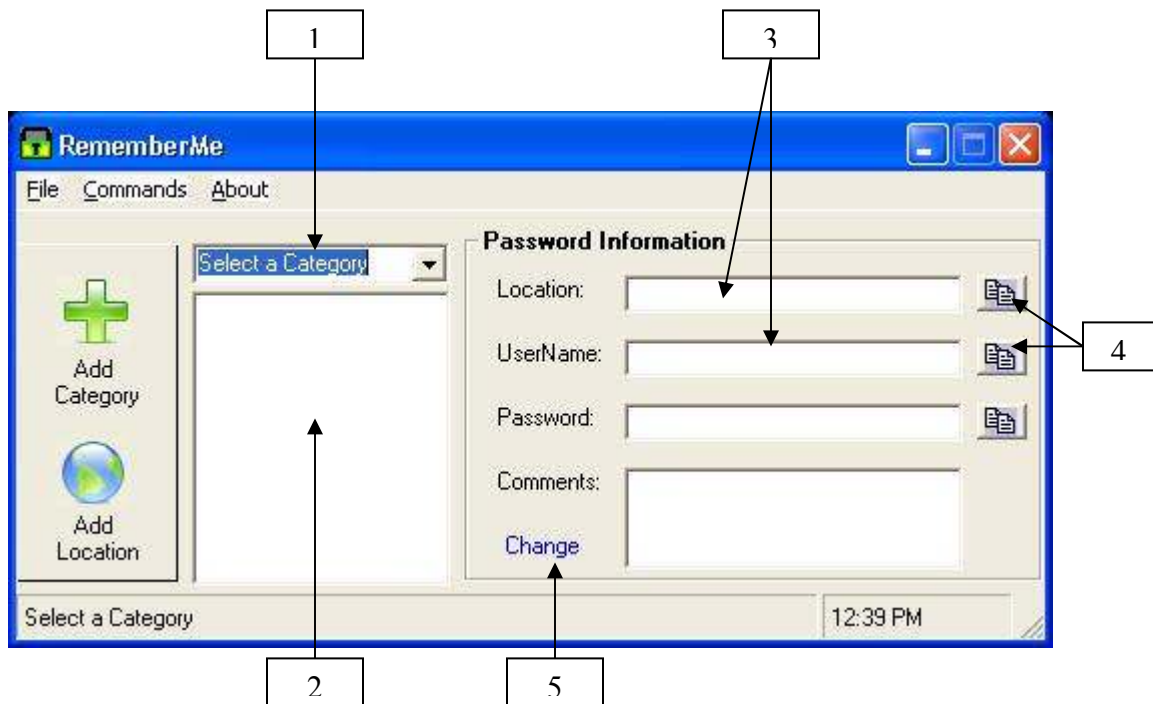
- ✓ **Category:** - A group you will use to categorize your different passwords
- ✓ **Location:** - This is a place you want a password remembered for.

To start off, click the “Add Category” button. Here you can add/remove categories to make it as easy to group your locations as possible.

Then, you will click the “Add Location” button. Here is where you will add/remove all your passwords for your profile.

~See next page~

Using RememberMe



1. Click the drop-down box to select your customized categories. When you click the category name, all locations entered for that category will show up below it.
2. Here, all your locations for the selected category will be listed. Click on any location and your username and password information will be shown to the right.
3. These display boxes will populate with your information after you click the location box.
4. Click any of these boxes to the right of the information boxes to copy that boxes contents to the clipboard for easy copy –and-paste into your locations. The information will be cleared from the clipboard after 10 seconds
5. Click the “Change” hyperlink to update any information about the selected information.