


Weather Watcher  
Copyright © 2007 Mike Singer


E-Mail:  [Mike@SingersCreations.com](mailto:Mike@SingersCreations.com)

Web Site:  
 [www.SingersCreations.com](http://www.SingersCreations.com)

Singer's Creations has been providing users, like you, with quality software and support since 1997. If you think about it, I am sure there are not too many other websites on the Internet that you can say the same about.


As you know, nothing is free :) A lot of free time and effort goes into writing software updates, providing support through e-mail, and bringing your new Weather Watcher ideas to life.

If you would like to make a contribution towards my efforts, then please consider sending a monetary donation via one of following methods:




 [Donate via PayPal.com](#)

 [Donate via Amazon.com](#)

If you are not comfortable with sending a donation online, then please contact

 [Mike@SingersCreations.com](mailto:Mike@SingersCreations.com) for a mailing address to donate by check.

If a monetary donation is not possible, then please consider supporting Singer's Creations by referring a friend, linking to SingersCreations.com from your website, or offering unused bandwidth to host the Weather Watcher installation files.

A lot of the questions I receive by e-mail have already been answered in my  [support forum](#), so please check that out first. If you're not able to find an answer there, then try posting a question in the proper forum or use the  [Bug Report](#) to contact me directly. You may also e-mail me at  [Mike@SingersCreations.com](mailto:Mike@SingersCreations.com) if you need help with something that falls outside the scope of the Bug Report.

When completing the Bug Report or e-mailing me directly, please be as detailed as possible. Sending one-line e-mails like "It's broke" or "It doesn't work" just creates more work for everyone, nor does it help you get a timely answer.

### Overview:

Use the **Active City Options** to set the city for which the weather is retrieved. While more than one city can be added to the "Active City" dropdown box, the weather information can only be displayed for one city at a time.

You can easily switch the active city from the "Change Active City" menu item in the Weather Watcher system tray menu. This menu can also be accessed by right-clicking certain areas of the main Weather Watcher interface.

### Interface Description:

- **Add City** - Click to add a new city by searching by city name.
- **Add Code** - Click to add a new city by US zip code or weather.com city code. The weather.com city code is the code found in the URL when viewing the weather for the city to add at weather.com.

#### Example:

[http://www.weather.com/weather/local/USPA0679?from=search\\_city](http://www.weather.com/weather/local/USPA0679?from=search_city)

- **Edit** - Edit the name of the selected "Active City".
- **Remove All** - Click to remove all cities from the "Active City" dropdown box.
- **Remove City** - Click to remove the selected city from the "Active City" dropdown box.

### Overview:

Use the **Auto Update Options** to set the interval at which the weather information is automatically downloaded from weather.com.

### Interface Description:

- **Forecast Auto Update Rate** - Set this dropdown box to "Never auto update" if you would like to manually update the weather information. Otherwise, the weather information will automatically be downloaded at the selected interval.

- **Only download updates when connected to the Internet** - Check if you're using Weather Watcher on a computer that is not always connected to the Internet. If you are receiving the "Internet not found" error message, then this checkbox must be unchecked in order to retrieve the weather information.

- **When update attempt fails, auto retry every minute** - Check if you would like Weather Watcher to automatically attempt to retrieve the weather information again if the initial update attempt fails.

### Overview:

Use the **Conversion Options** to specify which units of measure are used when displaying the weather information.

### Interface Description:

- **Display wind direction in degrees** - Check to display the wind direction in degrees, instead of the selected Wind unit.
- **Use tenths place value when measuring temperature** - Check to hide/show the tenths place displayed in the temperature value.

### Overview:

Use the **Export Options** to save the weather information to a local .HTML file each time the weather is updated. The local .HTML export file is replaced each time the weather information is retrieved.

### Interface Description:

- **Browse** - Click to select the path of the local .HTML file to export.
- **Delete Export** - When enabled, click to delete the last local .HTML file that was exported.
- **Enable Exporter** - Check to enable the export feature. This checkbox must be checked in order to set the export settings.
- **Use Default Template** - Click to use the default export template. Any of the Template Codes may be used to designate how the weather information is displayed when weather information is exported.
- **View Export** - When enabled, click to view the last local .HTML file that was exported.

### Overview:

Use the **Log Options** to save the weather information to a local log file each time the weather is updated. The log file is appended each time the weather information is retrieved.

### Interface Description:

- **Browse** - Click to select the path of the local file to log.
- **Delete Log** - When enabled, click to delete the log file.
- **Enable Logger** - Check to enable the log feature. This checkbox must be checked in order to set the log settings.
- **Use Default Template** - Click to use the default log template. Any of the Template Codes may be used to designate how the weather information is displayed when weather information is logged.
- **View Export** - When enabled, click to view the current log file.



### Overview:

Use the **General Options** to set up the features that are used when Weather Watcher is started. This area also includes other miscellaneous options.

### Interface Description:

- **Check for new version** - Check to automatically check if a new version of Weather Watcher has been released when Weather Watcher is started. This feature can also be accessed by clicking the "Check for New Version" item in the Weather Watcher system tray menu.
- **Exit Weather Watcher when "x" is clicked on main window** - Check to change the default minimize action of the "x" in the top, right corner of the main Weather Watcher interface. The location and look of the "x" may be modified if not using the "Splendid" interface skin.
- **Load when Windows starts** - Check to automatically start Weather Watcher when Windows is loaded.
- **Retrieve forecasts** - Check to automatically retrieve the weather information when Weather Watcher is started.
- **Set tray icon to Italic until first weather update** - Check to set the Weather Watcher system tray icon to Italic when Weather Watcher is started. After the first weather update has occurred, the Weather Watcher system tray icon will revert to normal text.
- **Start minimized** - Check to keep the Weather Watcher main interface minimized when Weather Watcher is started.

### Overview:

Use the **Maps Options** to specify the behavior of the maps dropdown menu. The full list of maps can be accessed by right-clicking certain areas of the main Weather Watcher interface. The Map History can also be accessed from the "Map History" item in the Weather Watcher system tray menu.

### Interface Description:

- **Remember size of each Map Viewer window** - Check to load each map using the same size and location in which the Weather Watcher Map Viewer window was last loaded for the selected map.
- **Remove Map** - If enabled, click to delete the selected map from the "Map History" listbox.
- **Stretch maps to fit Map Viewer window** - Check to ensure the maps are displayed at the best possible size when viewing maps in the Weather Watcher Map Viewer window. If unchecked, the maps might stretch beyond the height/width of the Weather Watcher Map Viewer window.
- **View Map** - If enabled, click to display the map selected in the "Map History" listbox.
- **View maps in default web browser** - Check to view maps in the default web browser, instead of the Weather Watcher Map Viewer.

### Overview:

Use the **On Download Options** to configure settings used when the weather information is downloaded.

### Interface Description:

- **Disable IE clicking sound** - Check to disable the default Internet Explorer clicking sound that is displayed when the web browser loads a new webpage. Weather Watcher uses an instance of Internet Explorer to display the weather information, so the normal Internet Explorer settings will reflect how the Internet Explorer instance functions within Weather Watcher.
- **Display time downloaded** - Check to display the time the weather information was downloaded on the weather forecasts. This information may be missing if not using the "Splendid" interface skin.
- **Display time observed at weather.com** - Check to display the time the weather information was last observed at weather.com. This information may be missing if not using the "Splendid" interface skin.
- **Use 24-hour time system** - Check to display the time downloaded and/or time observed time(s). This information may be missing if not using the "Splendid" interface skin.

### Overview:

Use the **Proxy Options** to configure a proxy server that uses authentication. If proxy authentication is not being used, then these options should not be modified.

### Overview:

Use the **Severe Alert Options** to filter out unwanted severe weather alerts.

### Interface Description:

- **Ignore alerts that include filtered words/phrases** - Click to ignore all severe weather alerts that include any of the words or phrases entered in the filtered listbox.
- **Show alerts that include filtered words/phrases** - Click to show all severe weather alerts that include any of the words or phrases entered in the filtered listbox.

### Overview:

Use the **Skins Options** to set up the look and feel of the Weather Watcher interface.

### Interface Description:

- **Interface Skin** - Select the skin to use for the main Weather Watcher interface.
- **Forecast Skin** - Select the skin to use to display the weather information within the main Weather Watcher interface.
- **Forecast Icons** - Select the skin to use for the icons displayed within the weather information on the main Weather Watcher interface.
- **Tray Icon** - Select the skin to use for the icons displayed in the Weather Watcher system tray icon.
- **Tray Tooltip Skin** - Select the skin to use for the custom tooltip window that appears when pointing the mouse at the Weather Watcher system tray icon.

### Overview:

Use the **Sounds Options** to specify sounds to be played when certain pre-defined events occur within Weather Watcher.

### Overview:

Use the **Tray Icon Options** to set up the look and feel of the Weather Watcher system tray icon.

### Interface Description:

- **Display degree symbol** - Check to display the degree symbol in the Weather Watcher system tray icon. If this option is checked, the Weather Watcher tray icon may take up more space than is allotted by Windows in the Windows system tray.
- **Display feels like temperature** - Check to display the feels like temperature in the Weather Watcher system tray icon, instead of the actual temperature.
- **Hide first digit when reaching 100°** - Check to hide the first digit of the temperature value in the Weather Watcher system tray icon. If this option is unchecked, the Weather Watcher tray icon may take up more space than is allotted by Windows in the Windows system tray when the temperature reaches 100°.
- **Left-Double-Click Action** - Select the action to perform when the Weather Watcher system tray icon is double-left-clicked.
- **Left-Single-Click Action** - Select the action to perform when the Weather Watcher system tray icon is single-left-clicked.
- **Never display tenths place** - Check to hide the tenths place in the temperature value in the Weather Watcher system tray icon. If this option is not checked, the Weather Watcher tray icon may take up more space than is allotted by Windows in the Windows system tray when displaying the temperature in Celsius.
- **Show tray balloon when new severe alert is retrieved** - Check to pop up a system tray balloon when a new severe weather alert is retrieved. Click the tray balloon to display the newly downloaded weather alert.



### Overview:

Use the **Tray Tooltip Options** to set format used when displaying the Weather Watcher system tray icon tooltip window.

### Interface Description:

- **Abbreviate value descriptions** - Check to abbreviate the descriptions printed beside each value in the Weather Watcher system tray tooltip. This setting is only recommended for use when using the standard Windows tooltip window and displaying a large number of tray tooltip values.
  
- **Hide value descriptions** - Check to hide the descriptions printed beside each value in the Weather Watcher system tray tooltip. This setting is only recommended for use when using the standard Windows tooltip window and displaying a large number of tray tooltip values.
  
- **Hide measurement units** - Check to hide the units printed beside each value in the Weather Watcher system tray tooltip. This setting is only recommended for use when using the standard Windows tooltip window and displaying a large number of tray tooltip values.
  
- **Use skinned tray tooltip window** - Check to use the skin specified in the "Tray Tooltip Skin" of the Skins Options instead of the standard Windows tooltip.
  
- **Values to Show in Tray Tooltip** - Select the values to display in the Weather Watcher system tray tooltip window. The values will appear in the order they are checked.

### Overview:

Use the **Wallpaper Options** to configure the map to use as the Windows desktop wallpaper.

### Interface Description:

- **Archive wallpaper image when wallpaper is updated** - When checked, wallpaper images will be saved in "C:\Program Files\Weather Watcher\WallpaperArchive" when the wallpaper is refreshed. The archived images are named using the current date and time for proper sorting.
- **Do not update wallpaper of screen saver is running** - When the wallpaper auto update is enabled, check to disable wallpaper updates while the screen saver is running.
- **On exiting Weather Watcher, reset wallpaper** - Check this option to automatically reset the Windows desktop wallpaper to the image that was being used before Weather Watcher was started.
- **Update wallpaper on Weather Watcher startup** - Check to perform a one-time wallpaper update when Weather Watcher is started.
- **Update wallpaper when a severe alert is downloaded** - Check to perform a one-time wallpaper update when a severe weather alert is downloaded.
- **Wallpaper Auto Update** - Set this dropdown box to "Never auto update" if you would like to disable the Weather Watcher wallpaper feature. When set to an interval, the wallpaper can also be manually updated at any time by selecting the "Refresh Wallpaper" item from the Weather Watcher system tray menu.

To resolve this problem, uncheck the "Only download updates when connected to the Internet" checkbox in the "Auto Update" tab of the Weather Watcher Options window.

Many factors can cause the "Server not found" error to appear when retrieving the weather or searching for cities. Below is a list of all known fixes.

**1.** If you're using a software firewall (e.g. Zone Alarm, Norton Internet Security), then make sure your firewall is allowing Internet access to "C:\Program Files\Weather Watcher\DL.EXE". DL.EXE is used to download data from the Internet, so it must have Internet access. You can try shutting down your firewall to verify the blockage.

**2.** If you're using an authenticated proxy server, then make sure you complete the "Proxy" section of the Weather Watcher Options.

**3.** Make sure you are not running any other programs that might be blocking Internet access to "C:\Program Files\Weather Watcher\DL.EXE".

**4.** Make sure you can access ▪ [weather.com](http://weather.com) in your web browser. It's possible that your computer is being blocked from viewing their website.

**5.** Try toggling your Internet Explorer Options. Open Internet Explorer, and go to "Tools" --> "Internet Options..." in the program menu. Click the "Advanced" tab and scroll down to the Security settings at the bottom. Check any option, click "Apply", uncheck the same option, and click "Apply" again.

**6.** Some people have found that some of the Internet Explorer Security Options are causing the problem. Unchecking the following Internet Explorer Options fixed the problem for various people:

- Do not save encrypted pages to disk
- Warn about invalid site certificates
- Warn if changing between secure and not secure mode
- Warn if forms submittal is being redirected

**7.** If you're using a proxy server, enable the "Use HTTP 1.1 through proxy connections" Internet Explorer Option.

**8.** Try downloading and reinstalling Weather Watcher again from

▪ <http://www.SingersCreations.com/AboutWeatherWatcher.asp>. It's possible that you're using an old version/build.

**9.** If you're using Windows XP, install Windows SP2:

▪ <http://www.microsoft.com/windowsxp/sp2/default.mspx>

1. Make sure you have the "Load when Windows starts" checkbox checked in the "General" tab of the Weather Watcher Options window.

2. If you're using the Windows "Hide inactive icons" taskbar setting, then double-check that Weather Watcher is set to always show.

You can access the taskbar options window by right-clicking an empty area on the Windows taskbar and choosing "Properties" from the right-click menu. This only applies if the "Hide inactive icons" checkbox is checked at the bottom of the taskbar options window.

3. Check if the Weather Watcher process (ww.exe) is running in the "Processes" tab of the Windows Task Manager. Press ALT+CTRL+DEL to access the Windows Task Manager.

If the "ww.exe" process is present, then the problem is most likely being caused by a conflict on your computer. See the links below for a boatload of advice on this issue:

- <http://www.techspot.com/vb/all/windows/t-4422-Win-XP-system-Tray.html>

- <http://www.techspot.com/vb/showthread.php?s=&threadid=8642&perpage=15&pagenumber=1>

The Weather Watcher Options window can be accessed in the following ways:

1. Right-click the Weather Watcher system tray icon and choose "Options...".



2. Right-click hot spots on the main Weather Watcher interface to access the same menu. The hot spots depend on the Interface Skin being used.

Here are the hot spots on the "Splendid" interface (highlighted in yellow):

UPDATE

CURRENT

HOURLY

DAILY

MAPS

ALERTS

## Harrisburg, PA

CURRENT

TODAY

TONIGHT



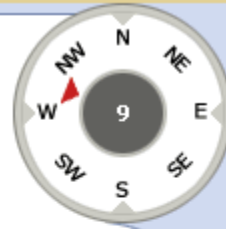
Fair

**Feels Like:** 45°F**Humidity:** 85%**Dew Point:** 44°F**Visibility:** 10.0 miles**UV:** 0 Low

N/A

**High:** N/A**Humidity:** N/A**Wind:** N/A**Precipitation:** 20%**Sunrise:** 6:38 AM

Partly Cloudy

**Low:** 45°F**Humidity:** 77%**Wind:** 9 mph**Precipitation:** 20%**Sunset:** 5:03 PM

49°

Observed Tuesday, November 1 @ 11:25 PM EST @ T74002111

Downloaded Tuesday, November 1 @ 11:40 PM

[View this forecast at weather.com](http://www.weather.com)

12 AM



50°F

Feels Like  
46°F

1 AM



49°F

Feels Like  
46°F

2 AM



48°F

Feels Like  
44°F

3 AM



47°F

Feels Like  
43°F

4 AM



47°F

Feels Like  
44°F

5 AM



46°F

Feels Like  
42°F

6 AM



46°F

Feels Like  
42°F

7 AM



47°F

Feels Like  
44°F

DAY

MOON

To disable the wallpaper feature:

1. Select "Never auto update" from the dropdown box in the "Wallpaper" Weather Watcher Options.
2. Uncheck all of the checkboxes in the "Wallpaper" Weather Watcher Options.
3. Manually reset your wallpaper by right-clicking an empty area on your desktop, choosing "Properties" from the dropdown menu, and changing the wallpaper image from the "Desktop" tab.



You can easily look up a list of available cities from weather.com's website.

To do so:

1. Go to:

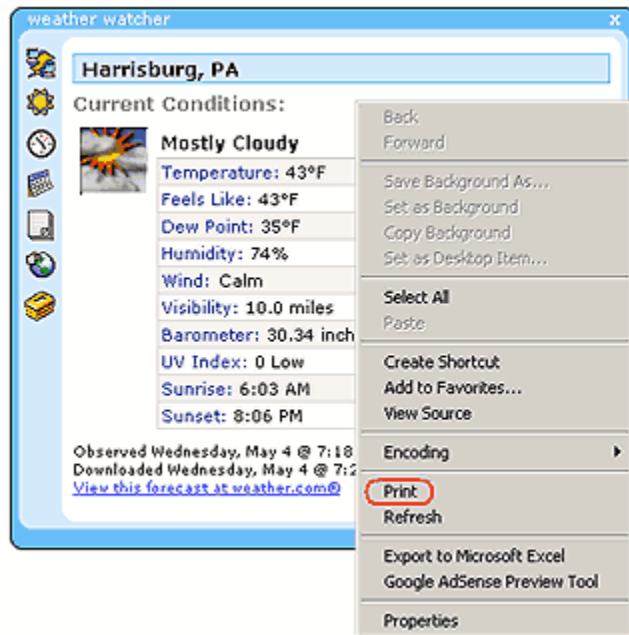
▪ <http://www.weather.com/common/welcomepage/world.html>

2. Type the name of your country in the "Enter a Location" textbox and click "GO".

See the Weather Watcher Skins forum to download additional Weather Watcher skins:

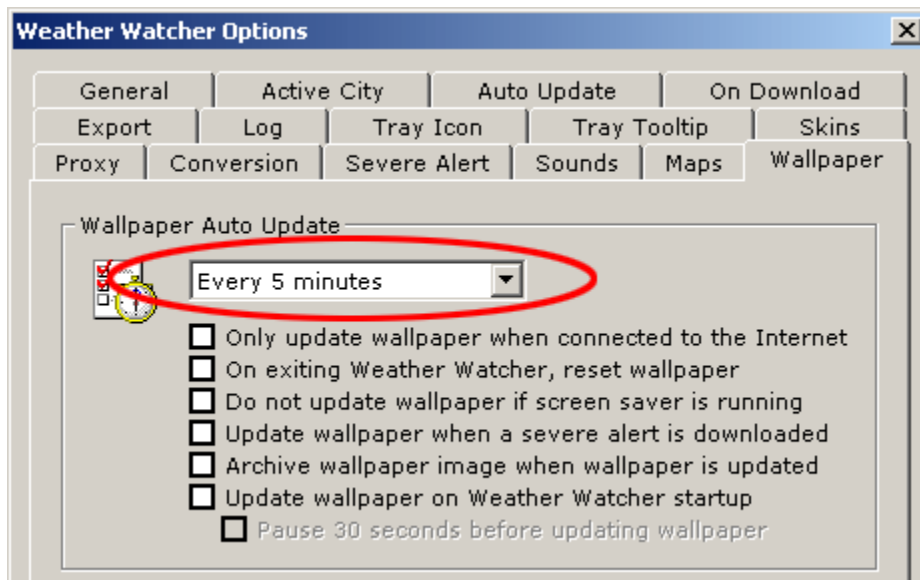
- [http://www.singerscreations.com/Forum/forum.asp?FORUM\\_ID=23](http://www.singerscreations.com/Forum/forum.asp?FORUM_ID=23)

Since the forecasts are displayed within an instance of Internet Explorer, you can access the Internet Explorer menu by right-clicking anywhere on the forecast area in Weather Watcher. To print a forecast, right-click anywhere in the forecast area and choose "Print" from the dropdown menu.



You can set up the "Wallpaper" section of the Weather Watcher Options to display a map as your desktop wallpaper and update it at a set interval. But, did you know you can use this same feature to rotate through multiple maps on each update interval?

To get started, set the desired map interval in dropdown box.



Next, hold down the CTRL key and select each map from the map list by clicking the map name.

▪

Click "OK" to save your changes and prepare to watch your selected maps rotate on your desktop at the set interval.

Follow the steps below to uninstall Weather Watcher:

**Step 1:**

Make sure Weather Watcher is not running. Select "Exit" from the Weather Watcher system tray icon menu to shut down Weather Watcher.

If Weather Watcher is running, but you cannot see the Weather Watcher system tray icon, then end the "WW.EXE" process in the Windows Task Manager. You can access the Windows Task Manager by pressing ALT+CTRL+DEL.

**Step 2:**

Once, Weather Watcher has been closed, run the uninstall program from the "Add/Remove" section of the Windows Control Panel, or from the "Weather Watcher" folder in your Windows Start menu. If you haven't installed a full version of Weather Watcher in a while, you might not see an uninstall entry for Weather Watcher in the "Add/Remove" section of the Windows Control Panel.

**Step 3:**

When you run Weather Watcher, it creates some files that contain your user settings. Since the uninstaller does not know those files exist, it will not remove them. You can manually remove them by deleting the "C:\Program Files\Weather Watcher" folder, or the folder where you installed Weather Watcher.

The following data tags can be used to customize the look of the Weather Watcher forecast skins. You'll find the skins in the following location:

C:\Program Files\Weather Watcher\Skins

The data tags can also be used to customize the data that is displayed in the Export and Log features. Those features can be setup in the "Export" and "Log" tabs of the Weather Watcher Options window.

Unfortunately, there aren't detailed instructions regarding this process, but you should be able to figure the process out if you have a basic understanding of HTML and take a few minutes to look through the \*.WTP template files in the "C:\Program Files\Weather Watcher\Skins\Forecasts" folder.

The following codes can be used in all of the .WTP template files:

#### **Current Data Tags:**

[ALERT ID] = 80981|77316  
[ALERTS AVAILABLE] = False  
[ALERTS COUNT] = N/A  
[ALERTS SOUND] = C:FilesWatcherNone)  
[ALERTS SOUND ESC] = C:\Program Files\Weather Watcher\None)  
[ALERTS SOUND SLASH] = C:/Program Files/Weather Watcher/None)  
[BAROMETER] = 753.6 mm and steady  
[BAROMETER PLAIN] = 753.6  
[BAROMETER PLAIN NOT CONVERTED] = 29.67  
[CODE] = USPA0679  
[CONDITION] = Cloudy and Windy  
[DATE] = 4/3/2006  
[DEW] = 8°C  
[DEW PLAIN] = 8  
[DEW PLAIN NOT CONVERTED] = 47  
[DEW RETURN] = 8°C<BR>  
[DEW PARENS] = 8°C  
[DOWNLOADED DATETIME] = 4/3/2006 10:37:32 PM  
[FEELS] = 10°C  
[FEELS PLAIN] = 10  
[FEELS PLAIN NOT CONVERTED] = 50  
[FEELS RETURN] = 10°C<BR>  
[FEELS PARENS] = 10°C  
[HUMIDITY] = 89%  
[HUMIDITY PLAIN] = 89  
[HUMIDITY PLAIN NOT CONVERTED] = 89  
[ICON] = <http://image.weather.com/web/common/wxicons/52/26.gif>  
[INSTALL LOCATION] = C:FilesWatcher  
[INSTALL LOCATION ESC] = C:\Program Files\Weather Watcher  
[INSTALL LOCATION SLASH] = C:/Program Files/Weather Watcher  
[LOCATION] = Harrisburg, PA  
[MOON] = Waxing Crescent

[MOON ICON] = <http://image.weather.com/web/common/moonicons/52/6.gif>  
[SEVERE ALERT] =  
[SUNRISE] = 6:48  
[SUNRISE AMPM] = 6:48 AM  
[SUNSET] = 7:34  
[SUNSET AMPM] = 7:34 PM  
[TEMP] = 10°C  
[TEMP PLAIN] = 10  
[TEMP PLAIN NOT CONVERTED] = 50  
[TEMP RETURN] = 10°C<BR>  
[TEMP PARENS] = 10°C  
[TEMP HIGH] = 10°C  
[TEMP HIGH PLAIN] = 10  
[TEMP HIGH PLAIN NOT CONVERTED] = 50  
[TEMP HIGH RETURN] = 10°C<BR>  
[TEMP HIGH PARENS] = 10°C  
[TEMP LOW] = 10°C  
[TEMP LOW PLAIN] = 10  
[TEMP LOW PLAIN NOT CONVERTED] = 50  
[TEMP LOW RETURN] = 10°C<BR>  
[TEMP LOW PARENS] = 10°C  
[TIME] = 10:37:32 PM  
[UPDATED] = Observed Monday, April 3 @ 10:25 PM EDT @ T74002111  
Downloaded Monday, April 3 @ 10:37 PM  
[UPDATED DATETIME] = 4/3/06 10:25 PM EDT  
[UV] = 0 Low  
[UV PLAIN] = 0  
[VISIBILITY] = 4.0 miles  
[VISIBILITY PLAIN] = 4.0  
[VISIBILITY PLAIN NOT CONVERTED] = 4.0  
[WIND FULL] = NNE 11 km/h  
[WIND] = 11 km/h  
[WIND PLAIN] = 11  
[WIND PLAIN NOT CONVERTED] = 7  
[WIND NO DIRECTION] = 11 km/h  
[WIND NO GUST] = NNE 11 km/h  
[WIND DIRECTION] = NNE  
[WIND GUST] = N/A  
[WIND GUST PLAIN] = N/A

### Hourly Data Tags:

[HOURLY CONDITION] = Rain  
[HOURLY DAY] = Monday  
[HOURLY DAY ABBREV] = Mon  
[HOURLY DEW] = 8°C  
[HOURLY DEW RETURN] = 8°C<BR>  
[HOURLY DEW PARENS] = 8°C  
[HOURLY FEELS] = 10°C  
[HOURLY FEELS RETURN] = 10°C<BR>  
[HOURLY FEELS PARENS] = 10°C  
[HOURLY HOUR] = 11 PM

[HOURLY HUMIDITY] = 69%  
[HOURLY ICON] = <http://image.weather.com/web/common/wxicons/52/12.gif>  
[HOURLY PRECIPITATION] = 60%  
[HOURLY TEMP] = 10°C  
[HOURLY TEMP RETURN] = 10°C<BR>  
[HOURLY TEMP PARENS] = 10°C  
[HOURLY WIND FULL] = W 3 km/h  
[HOURLY WIND] = 3 km/h  
[HOURLY WIND PLAIN] = 3  
[HOURLY WIND NO DIRECTION] = 3 km/h  
[HOURLY WIND NO GUST] = W 3 km/h  
[HOURLY WIND DIRECTION] = W  
[HOURLY WIND DIRECTION IMAGE] = W

### Daily Data Tags:

[DAILY CONDITION DAY] = Cloudy  
[DAILY CONDITION NIGHT] = Rain  
[DAILY DATE] = Apr 3  
[DAILY DAY] = Monday  
[DAILY DAY ABBREV] = Mon  
[DAILY HI] = 6°C  
[DAILY HI RETURN] = 6°C<BR>  
[DAILY HI PARENS] = 6°C  
[DAILY HUMIDITY DAY] = 70%  
[DAILY HUMIDITY NIGHT] = 64%  
[DAILY ICON DAY] = <http://image.weather.com/web/common/wxicons/52/44.gif>  
[DAILY ICON NIGHT] = <http://image.weather.com/web/common/wxicons/52/12.gif>  
[DAILY LO] = 6°C  
[DAILY LO RETURN] = 6°C<BR>  
[DAILY LO PARENS] = 6°C  
[DAILY PRECIPITATION DAY] = 70%  
[DAILY PRECIPITATION NIGHT] = 70%  
[DAILY SUNRISE] = 6:48  
[DAILY SUNRISE AMPM] = 6:48 AM  
[DAILY SUNSET] = 7:34  
[DAILY SUNSET AMPM] = 7:34 PM  
[DAILY WIND FULL DAY] = W 27 km/h  
[DAILY WIND DAY] = 27 km/h  
[DAILY WIND PLAIN DAY] = 27  
[DAILY WIND NO DIRECTION DAY] = N/A  
[DAILY WIND NO GUST DAY] = N/A  
[DAILY WIND FULL NIGHT] = W 27 km/h  
[DAILY WIND NIGHT] = 27 km/h  
[DAILY WIND PLAIN NIGHT] = 27  
[DAILY WIND NO DIRECTION NIGHT] = 27 km/h  
[DAILY WIND NO GUST NIGHT] = W 27 km/h  
[DAILY WIND DIRECTION DAY] = NNW  
[DAILY WIND DIRECTION NIGHT] = W

### Detailed Data Tags:

[DETAILED DATE] = Apr 3



[DETAILED DAY] = Monday Night  
[DETAILED DAY ABBREV] = Mon  
[DETAILED FORECAST] = Occasional rain tapering to a few showers late. Low 6°C. W  
winds at 8 km/h to 16 km/h, increasing to 15 to 40 km/h. Chance of rain 70%. Rainfall  
around a quarter of 2.5 cm.

**Miscellaneous Tags:**

[SKIN FORECASTS] = Splendid  
[SKIN ICONS] = Splendid  
[INSTALL DIRECTORY] = C:\Program Files\Weather Watcher

**Additional Log-Only Tags:**

[CRLF]  
[TAB]

When using the Hourly, Daily or Detailed tags, you must use them inside of a loop structure. See the following example for the loop structure syntax:

```
[HOURLY LOOP COUNT=5]
  [TEMPLATE]
    Day: [HOURLY DAY]
    Condition: [HOURLY CONDITION]
  [/TEMPLATE]
[/HOURLY LOOP]
```

Or, use multiple [TEMPLATE] tags to alternate row colors.

```
[HOURLY LOOP COUNT=5]
  [TEMPLATE]
    Day: [HOURLY DAY]
    Condition: [HOURLY CONDITION]
  [/TEMPLATE]
  [TEMPLATE]
    Day: [HOURLY DAY]
    Condition: [HOURLY CONDITION]
  [/TEMPLATE]
[/HOURLY LOOP]
```

In the above examples, the Day Name and Condition will be printed for the next 5 hours. To print all of the available hours, use a "\*" in place of the "5".

```
[HOURLY LOOP COUNT=*]
  [TEMPLATE]
    Day: [HOURLY DAY]
    Condition: [HOURLY CONDITION]
  [/TEMPLATE]
[/HOURLY LOOP]
```

The Daily and Detailed data can be looped using a similar syntax.

```
[DAILY LOOP COUNT=5]
```

```
        [TEMPLATE]
            [DAILY DAY]
            [DAILY CONDITION DAY]
        [/TEMPLATE]
    [/DAILY LOOP]
    [DETAILED LOOP COUNT=5]
        [TEMPLATE]
            [DETAILED DAY]
            [DETAILED FORECAST]
        [/TEMPLATE]
    [/DETAILED LOOP]
```

You can use the optional [START] tag to specify which item to print first. To print the next 7 days starting tomorrow, set the [START] tag to "2".

```
    [DAILY LOOP COUNT=7 START=2]
        [TEMPLATE]
            Day: [DAILY DAY]
            Condition: [DAILY CONDITION DAY]
        [/TEMPLATE]
    [/DAILY LOOP]
```



