

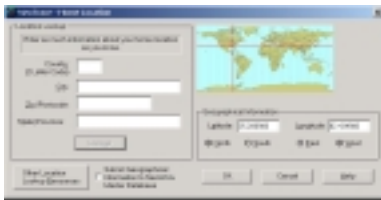
What's New

New Features

Welcome to NeoTrace 2.11. This document introduces new features added to NeoTrace since the 2.02 release. A complete manual in PDF format is available from our web site. You can either use the 'Go Online' feature in NeoTrace to visit the home page and download it, or simply use the Auto-Update feature described later in this document. Using the Auto-Update feature you can download the full NeoTraceDoc.PDF manual. Complete documentation is also provided online. Simply select Contents... from the help menu to be taken to the online help system.

Improved Home Location Dialog

The Home Location Dialog now gives instant feedback on a small map, letting you see if your location data is on the right track. Remember that if the automatic lookups based on your country and city do not accurately place your location, you should hit the "Other Resources" button to view web pages that will assist you in placing your location precisely with lat/lon data.



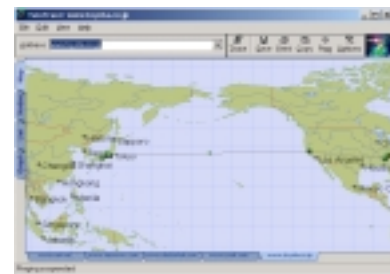
Detail maps

The geographical mapping features of NeoTrace are designed to allow detail maps. We introduce the first one with a US map included in the 2.10 distribution. This map offers greater resolution for city locations and internal political boundaries. This map will be used on any trace that is completely contained within the US. Additional sub-maps will be made available on our web site from time to time.



Use the 'Go Online' feature in NeoTrace to visit the NeoTrace home page and look for new maps and other items.

The World map can now be drawn with the Pacific in the center of the map, allowing for simpler viewing of trace results that cross the Pacific.



Improved Locale Database

The scope of data available is always growing. This release includes the latest revisions of the data. The next two new features allow you to easily submit new data and obtain updates:

Direct Node Location Editing

You can now directly change the location of nodes. Nodes with unknown locations are identified by a small circle with no shadow, and are also obvious by lying directly on a line and evenly spaced.

To edit the node location right click to bring up the pop-up menu. Select the “Edit Location Information...” item. In this dialog you can now edit the lat/lon data for this specific node, or you can add data to the master database for a pattern of nodes. To submit data to the master database for consideration open the dialog to its full size with the “Advanced>>” button and check the “Send Information...” item at the bottom.

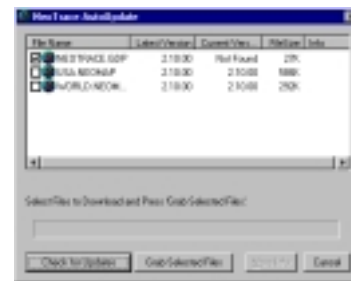


If you choose not to submit the data to the master database it will only be stored in your local **NeoLoc.ini** data file. This file can be edited by hand with a text editor and shared with friends or other users in your organization.

Auto-Update

This feature allow you to check our web servers for new files. Examples of new files would include updated data, new maps, documentation, or even a new version of NeoTrace.

Select “Check For Updates” from the Help menu. In the update dialog select the “Check for Updates” button. After a moment a list of new files will appear (assuming there are any). Check the items you want to download and the “Grab Selected Files” to update. In some cases additional information will be available for a file, explaining any important details you need to know.



Other Improvements

Users of previous versions will also notice that the Graph and View displays have been improved, making them easier to read. There is also another new item in the node pop-up menu. The “Show Map for this Location” item will appear on nodes with known locations. Selecting this item will open a web browser showing a navigable detail map of the location. The Options dialog has been updated with a tabbed format making it easier to read and allowing more controls to be fit in for the future.