

“Take Off” Documentation

Richardson's Rules of Reimbursement

I have always been driven by some obscure moral obligation to do the Right Thing. It is this moral drive which has given me the impetus to create a utility such as “Take Off”. I see many utilities available which seem to be very useful, but somehow just do not seem worth the \$15 or \$20 requested by the authors.

A utility such as “Take Off” will be utilized frequently (each time you start your Mac), and hopefully will be considered a useful tool for you. The price (\$3.50 and blank disk or \$5.00 without the disk) seems more than reasonable. For those upstanding individuals who decide to keep and use “Take Off” and send in the fee, I thank you, my wife thanks you, my creditors thank you, and may your God Bless You.

Program Design Specification

“Take Off” was initially designed to allow the Macintosh user, upon startup, to select either the Finder or Multifinder as the desktop display application. Along the way it seemed easy enough to allow the direct launching of an application, which, when terminated, would return the user to the desktop under Finder control.

Shortly after Take Off's initial release, I received a suggestion to provide the capability for a default application to be launched under either Finder or Multifinder control. This requirement was simple to implement for an application under Finder control, but proved a bit tricky for applications under Multifinder control.

In version 2.0 the default launching of an application under Finder or default launching of applications or DAs under Multifinder became supported.

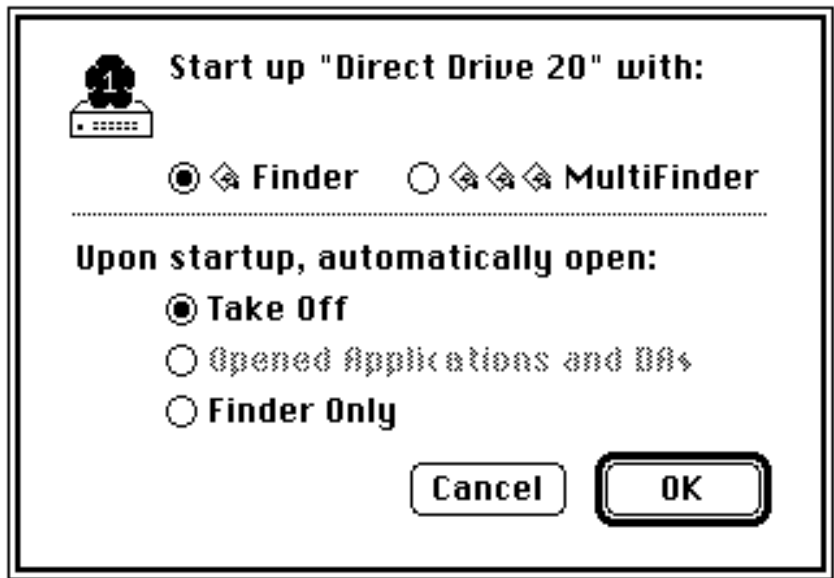
Although it has been requested, this program will not allow you to switch from Multifinder back to the Finder control without restarting the Macintosh. Apple has not yet solved this problem either. You can however utilize “Take Off” to switch from Finder control to Multifinder.

Version 3.0.x incorporates several other suggestions received from users, as well as correcting several major and many minor bugs. The main addition was the password feature upon startup. This will offer a Mac user some protection against unauthorized use of their computer. Additionally a new Special menu supports -- Restart and Shutdown.

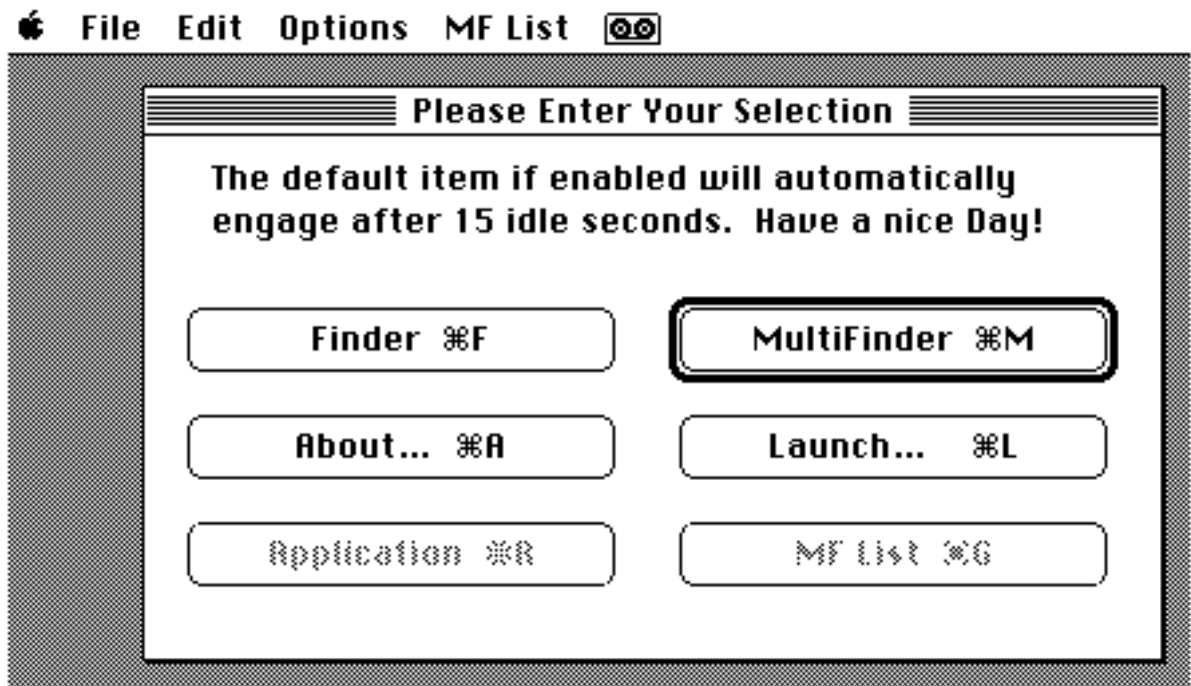
Program Setup

To take advantage of all it's capabilities, the “Take Off” program should be configured as the startup application. The proper way to accomplish this task is to first ensure that “Take Off” is on the startup volume. The startup volume is always the icon in the upper right corner of the desktop when the system is first booted. This volume contains the currently active system folder. With the “Take Off” icon selected, execute the Set Startup... command from the Finder's Special menu. Finally, set the options as shown below, and select the OK button.

That's all there is to it.



The next time your system is booted you should see a menu bar and window as shown below. Please note that if you have several volumes mounted, especially if you have a slow volume such as an old HD20 non-SCSI Apple drive you may be greeted briefly with the watch cursor while the volume(s) are mounted. The delay timer will not begin until the volume is mounted and the watch cursor has changed back to the arrow.



At this point the items in the dialog box are virtually the same as the equivalent items under the **File menu**. Finder and Quit are the same, as are Application and Run.

The **Edit menu** is not used by this program but is available for desk accessories, etc.

The **Options menu** contains seven items:

Set Finder Startup Appl...

Allows the user to select an application to launch directly. Launching the application bypasses the Finder; however, when the application is terminated the Finder regains control. This item is disabled until an application has been selected. Once the selection is made the program will remember the setting until it is changed to a new one.

Default Window Location

Returns the window positions back to my default which has been set to accommodate the standard 9" screen. If you move the windows, the new positions are remembered.

Enable Password

This menu item really has two functions. When the Take Off application does not have a password defined, the Enable Password menu item allows the user to set up a password. In order for this item to appear as an enable item (not dimmed) when there is no password defined the **option key must be held down** while selecting the menu item. After a password has been defined to the application, this menu item changes back and forth between Enable Password and Disable Password as appropriate allowing the user to turn on and off the password option.

Note: You must know the correct password in order to utilize any of the Password commands, with the exception of an initial password definition.

Warning: DO NOT FORGET YOUR PASSWORD! nuff said.

Change Password

Allows the user to assign a different password.

Remove Password

Allows the user to completely remove the password definition from the application.

Set Default Item

Hierarchical menu which allows the user to select which control is the default (surrounded by the bold outline). This is the selection that is automatically executed when the timer expires.

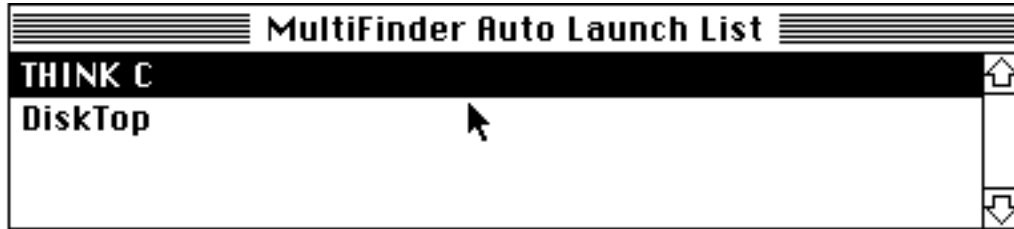
Set Default Time

Hierarchical menu which allows the user to select the desired amount of delay before the default is executed. I selected a minimum of 3 seconds because once the delay is set for

any less, it is quite a task to catch and make it longer again.

The **MF List menu** contains four items:

This menu allows you to set up the Multifinder launch list (shown below) as you desire. When the list has values in it and Execute MF List is selected using the File Menu or the MF List Button in the dialog box, the applications and desk accessories in the list are opened after Multifinder is launched.



Clear List

Removes all entries from the list, and removes the list window. This menu item is disabled and the window does not appear when the list is empty.

Delete Selected Item

When an item is selected in the list window (such as Think C above) this item is enabled allowing the selected item to be deleted from the list.

Add Application...

Allows the user to add an application to the list.

Add Desk Accessory

Hierarchical menu which allows the user to add a desk accessory to the list.

The **Special menu** contains two items:

This menu allows you to either restart or shutdown your Mac.

Restart

Restarts the Mac.

Shutdown

Shutsdown the Mac.