

The documentation for "Path" and "Decide".

"Path" was designed to allow access to applications that were located in folders from the Desktop without having to open any folders. Once this application is properly setup, "Path" will launch an application instantaneously from the Desktop. The application can be in any folder. "Path" also can set the default directory to the directory that contains your documents. This allows you the freedom to place your applications in any directory that you want no matter how deep in the directory system you place the application. "Path" is really not helpful if you are changing your directory or partition setup frequently. "Path" was designed for hard disk users, and has not been tested on floppy based systems. "Path" is not a Finder replacement. "Path" is a desktop utility.

A new copy of "Path" will always stop with the menus for "Path", and you will not have any alerts before the menus appear. This is helpful to know because of the present problems with viruses.

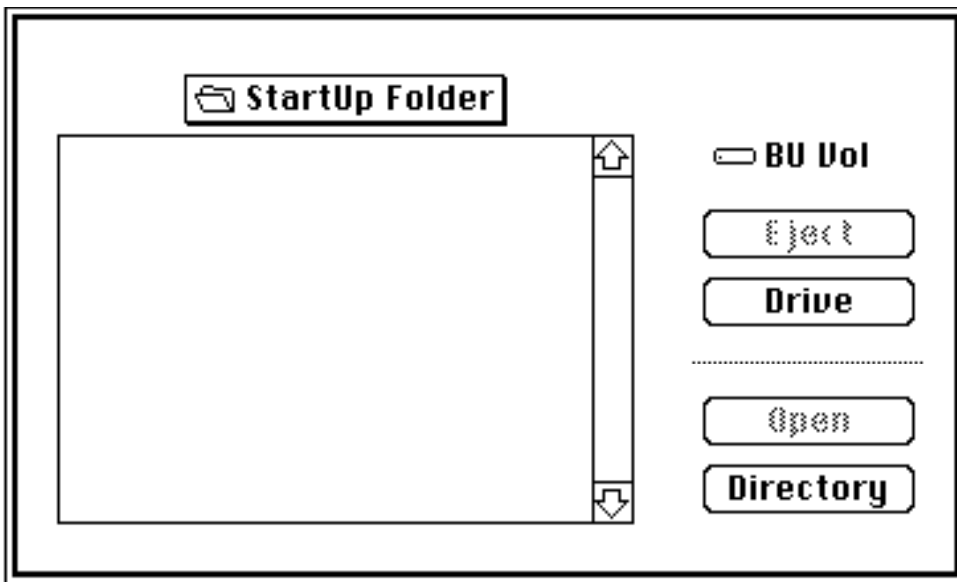
Problem: The main problem is not really a problem but a nuisance. When running under Multifinder the Finder updates for icon and name changes will not be correct. This occurs if "Path" is in an open folder or on the desktop. To see the name and icon changes one has to restart the system, or open and close the folder or volume that contains "Path" twice. This does not occur if you are not running Multifinder. Also other applications that rename files have the same problem when running under Multifinder. Second problem - "Path" does not work with the Tops network according to my beta tester. Since I don't have Tops I have no ideal how to fix this problem. With only one computer, I don't really need Tops. Sorry about that.

The only program that "Path" does not work with that I am aware of is Nosy. However Nosy has an application included with it to do the same thing from the Desktop. However Nosy is not a typical Mac application. Of course I don't have every Mac application either. So if any problems occur let me know. I will try to fix it.

Below is a description of the commands for the file menu:

Application - Select the application that "Path" will launch.

Directory - Set the default directory where your documents are located. Select the directory when you are inside the directory. Look at the top of dialog to see what directory you are currently in. This will not work with applications that use their own standard file dialog. This will work only with applications that use Apple's standard file dialog.



In the above illustration, if you clicked on the directory button. The directory that would be selected would be the "Startup Folder". This is slightly different from the standard Apple file dialog in this situation.

Path Icon - Use the original "Path" icon.

Grab Icon - Select another application's icon to use in place of "Path's" icon.

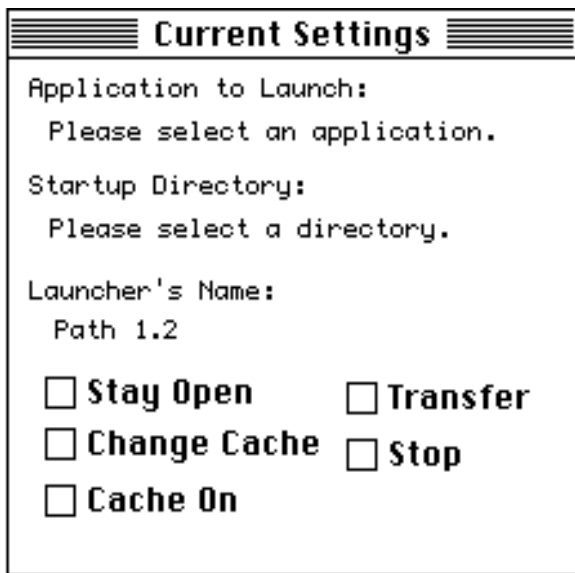
Rename - Rename the "Path" application.

Everything - This command selects the application, grabs the icon of the application selected, and lastly uses the selected application's name. This is the command that I use the most.

Test - Test to see if your present setup works okay.

Transfer - Launches another application. Many applications have this command. It is very useful to have a new copy of "Path" on the desktop to launch applications that are not used frequently.

Quit - Quits "Path", and save present settings.



Current Setting Window - Gives the current settings of "Path", and allows you to set some options. See above illustration. Below is an explanation of the buttons in this window.

Stay Open - This feature works only with Multifinder. If this command is selected "Path" will not close after it launches an application under Multifinder. It will remain open until you close it with the quit command. The may be useful when combined with the Transfer command.

Stop - Will cause "Path" to stop on startup, and display the current setting window.

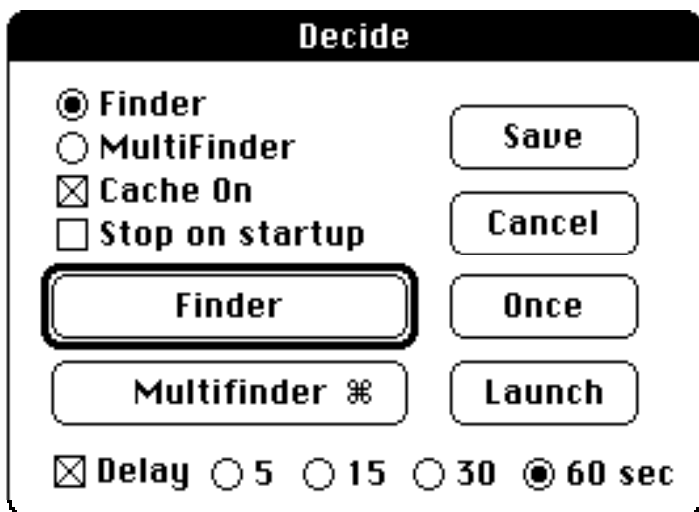
Transfer - If the Stop button is selected this will cause the Transfer dialog to appear when "Path" stops. The transfer dialog will open to the directory that you have selected. This is very useful to use with a folder that contains your favorite utilities. See the directory command above.

Another way to stop "Path" from launching the application so that you can reconfigure "Path" just hold down the command key when launching "Path" or hold down the mouse button after launching "Path". You have to be very quick with either action because "Path" is very quick. It is a good ideal to keep a copy of the original because this copy will always stop when it is launched. I keep a copy of the original and make duplicates from this copy.

Tip:

Instead of setting the duplicates of "Path" on the desktop I keep all the duplicates of "Path" that are used to launch my applications in one folder on the boot volume or partition. This folder remains open at all times. This is really handy with Multifinder because this folder window always comes to the front when switching to the Finder. Remember under Multifinder icons on the desktop don't move to the front only the windows that are open move to the front under Multifinder. This is what happens on my system, and I am using system 6.0.2. If there is a way to get the icons come to the front, please let me know.

Another little handy utility is "Decide". This is a very nice utility that launches Multifinder or the Finder at startup. Just make "Decide" the startup application. It can also be used to launch Multifinder from the desktop. Options that can be set are Ram Cache on or off (of course the check means that the ram cache will be turned on). The "stop of startup" option allows you to stop at startup to decide weather to use the Finder or Multifinder at startup, or to set any of the other options. The "Launch" button is for launching another application, and the "Save" button is for savings the present settings. The "Once" button is for using the present settings only once. The delay button allows "Decide" to stop for a period of time in seconds, before automatically launching. This allows you to change the options before "Decide" will launch the default selection automatically. Even when "Delay" is set, one can launch Finder or Multifinder manually. Use command - return to launch the selection under the default button. This option will not change the current setting. To stop "Decide" if "Stop on startup" or "Delay" is off, just hold down the command button or the mouse button when "Decide" is launched. Note if you launch an application from decide at startup, when the application quits you will return to the finder.



This is quality freeware by A. P. Kennedy, Sr. (On Genie) It may be used by anybody for anything that you want to use it for, and it may be sold by anybody for any price that someone is crazy enough to pay for it. This is truly freeware, and I will not be responsible for any (I mean any) problems that occur while using this program period. Use it at your own risk!!!!!! Please make sure that the Docs are with the application when you share it with a friend, and give them an unused copy of "Path". Source code is available. I will probably add launching a set of applications at one time with "Path" while running Multifinder.

The end