

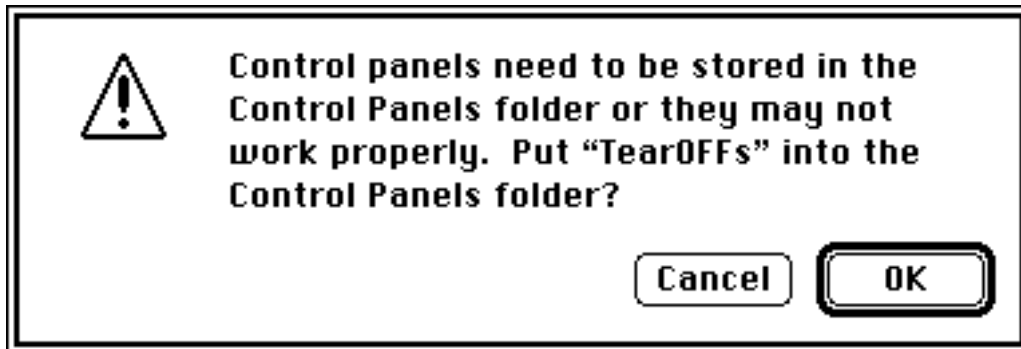
TearOFFs™

Control panel developed by Rodney K. Magnuson and Steve Kiene.
Copyright 1988-1992 MindVision Software, All Rights Reserved.

How to Install

To install TearOFFs, simply drag TearOFFs into the System folder.

If you are running System 7.0, you will see the following dialog. Click OK, and the Finder will put TearOFFs into the Control Panel folder inside the System folder, where control panels belong.



If you are running System 6.0, you will not see this dialog because the System folder is where control panels belong under System 6.0.

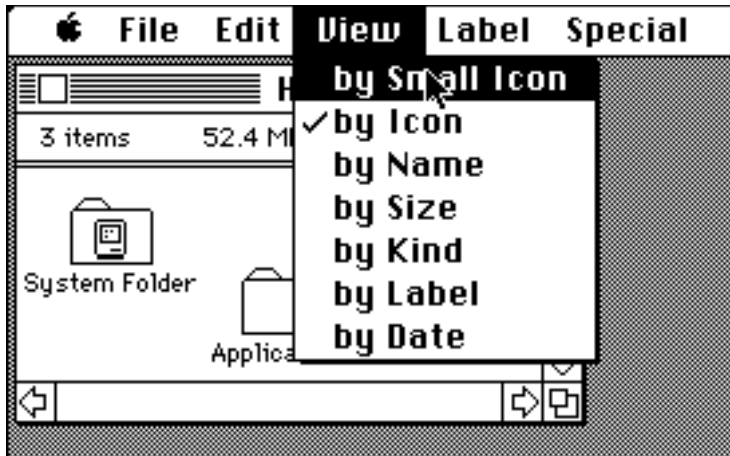
You will now need to reboot your machine by selecting Restart from the Special menu in the Finder.

What is it

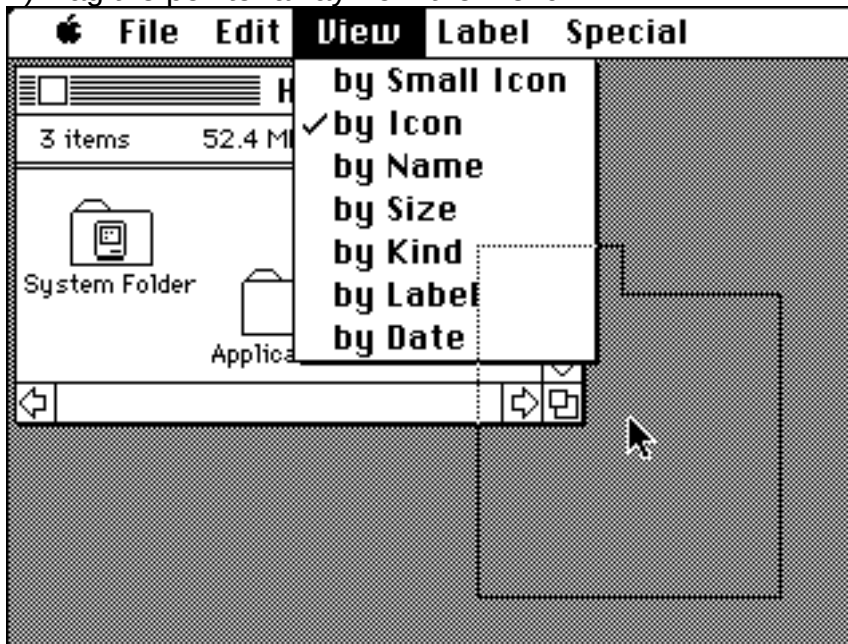
TearOFFs is a control panel that adds the ability to "tear off" menus in any application or desk accessory.

To tear off a menu, click in the menu bar, draw the mouse to the menu you wish to tear off, and drag away from the menu. Release the mouse when the menu is where you wish to position it. The following diagrams illustrates the point.

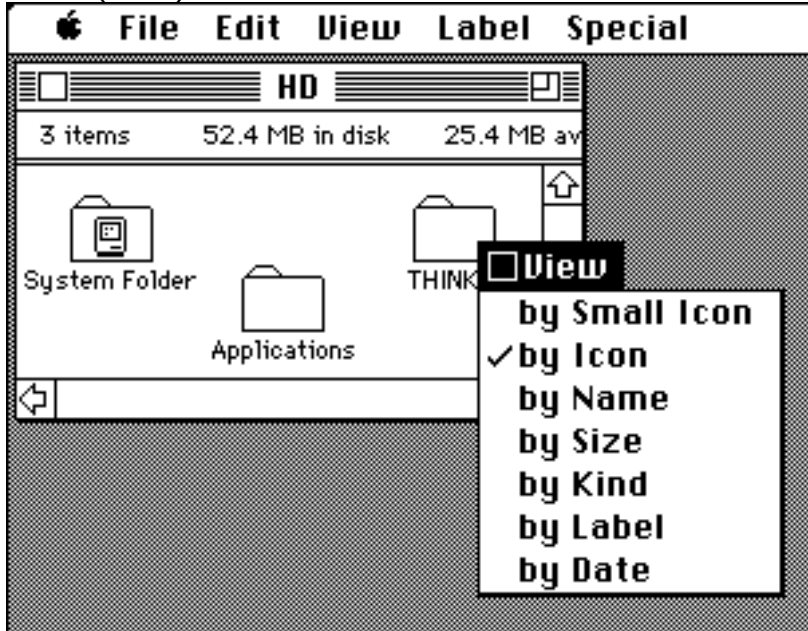
1) Select the menu you wish to tear off.



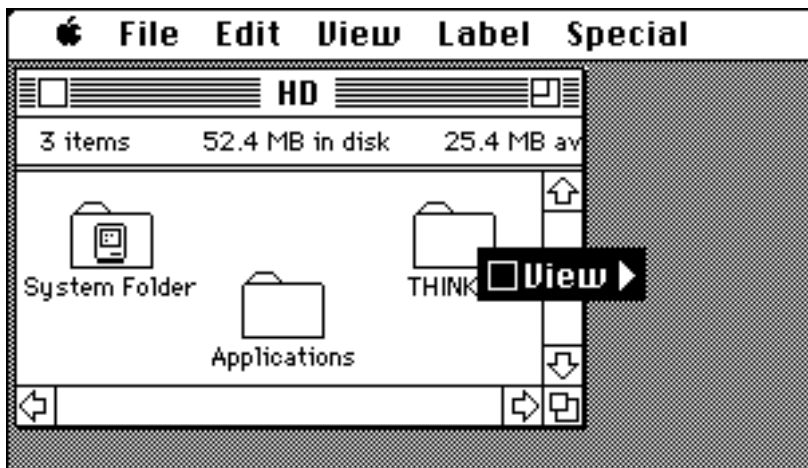
2) Drag the pointer away from the menu.



3) Drag and drop the torn menu where you want it to be. You have just torn a tear off menu (TOM).



By holding down the Tear off title Hot Key, you would have torn a tear off title (TOT). It would have looked like the following.



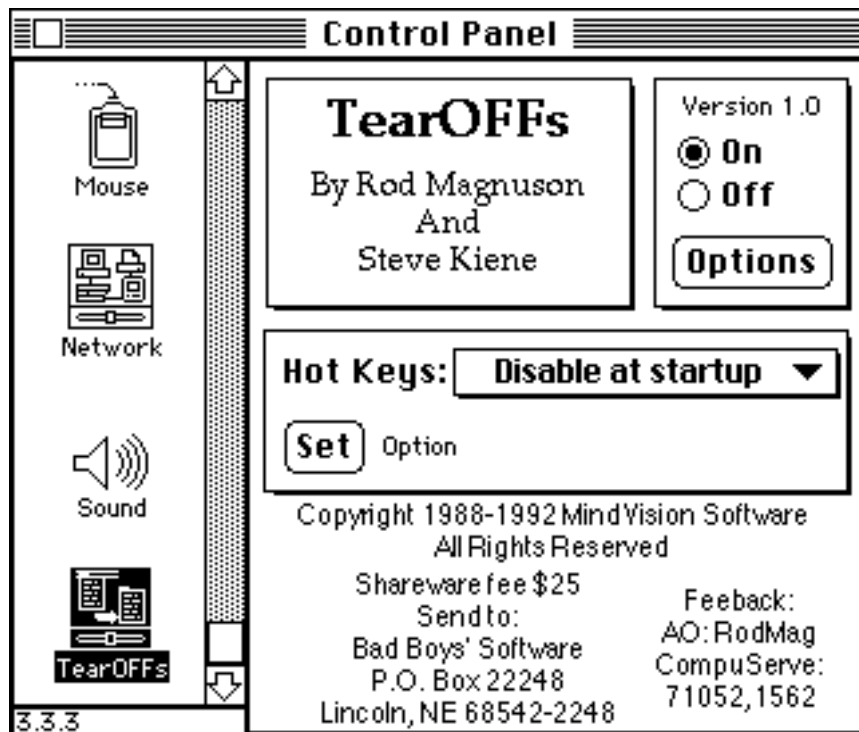
Working with TOMs and TOTS

Holding down the option modifier key when closing a TOM or TOT will close all open TOMs and TOTS.

How to configure

TearOFFs has many features. The control panel configures all of these features. To open the control panel you need to do one of the following things.

If you are running System 6.0, you will need to open the Control Panel desk accessory, by selecting Control Panel item from the Apple menu. The following window will appear. Scroll the list of control panels if necessary to the TearOFFs control panel.



If you are running System 7.0, you will need to open the Control Panels folder by first opening the System Folder and then opening the Control Panels folder inside, or by selecting the Control Panels item from the Apple menu (NOTE: System 7.0 ships with an alias to the Control Panels folder in the Apple Menu Items folder, if you have deleted or moved this it will not be in the Apple menu). In the Control Panels folder you will see

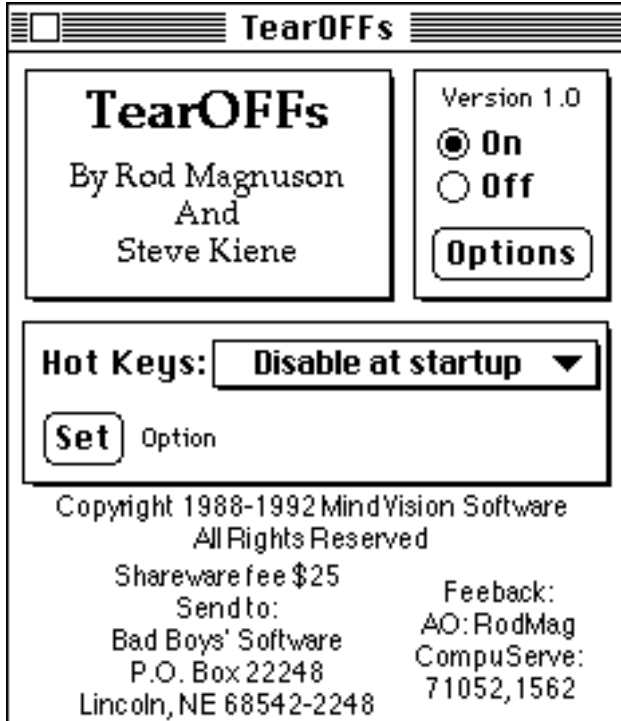
the TearOFFs control panel. It will look like



TearOFFs

. Open it, either by selecting it and then selecting Open from the File menu or by double-clicking it.

It will appear like the following:



The TearOFFs control panel allows you to configure:

- Whether the control panel is on.
- Whether it should show its icon at startup.
- Which modifier key(s), will disable it if held down at startup.
- Which modifier key(s), will enable tearing of menus.
- Which modifier key(s), will disable tearing of menus.
- Which modifier key(s), will enable tearing of TOTs.
- Which modifier key(s) plus normal key, will show or hide all torn menus.
- Which modifier key(s) plus normal key, will save the positions of all torn menus.
- Which modifier key(s) plus normal key, will load the positions of all torn menus.
- Which modifier key(s) plus mouse click, will create a horizontal or vertical TOMBar.
- Which modifier key(s) plus mouse click, will pop a menu bar where you have clicked.

Turning the control panel on and off.



To turn the control panel on or off, click the button corresponding to what you want to happen. NOTE: If you turn TearOFFs off, it will only not allow you to tear menus off; it will still install itself when you reboot.

Click the options button and you will see the following dialog.



To show or not show the icon at startup, click the “Show icon at start” checkbox.

If you check the “Clicking TOTs always pops TOT’s menu” checkbox, when you click TOTs, their menu will pop up, so that you can select an item from it. You will need to hold down the command key when clicking on a TOT to move it, if you have this feature on. If you do not check the checkbox, you will need to click in the TOT’s pop area (the white triangle pointing the direction the menu is going to pop up). Clicking anywhere else, except the close box, on the TOT will allow you to move it.

Hot Keys

All other features of TearOFFs are referred to as Hot Keys. Hot Keys can be one of three types: Modifier only, modifier plus key, or modifier plus click. Hot Keys can be inactive as well.

Modifier only Hot Keys require only a modifier key(s). The modifier keys are the option, command, shift, and control keys. These keys held in any combinations can make modifier only Hot Key. The modifier only Hot Keys are: Disable at startup, Enable tearing, Disable tearing, and Tear off title.

Modifier plus key Hot Keys require modifier key(s) plus a normal key. The modifier keys are the option, command, shift, and control keys. The normal keys are all the other keys on you keyboard. The modifier plus key Hot Keys are: Show/Hide TOMs, Load TOM Positions, and Save TOM positions.

Modifier plus click Hot Keys require modifier key(s) plus a click of the mouse. The modifier keys are the option, command, shift, and control keys. A click is click the mouse. The modifier plus click Hot Keys are: Horizontal TOMBar, Vertical TOMBar, and Popup Menubar.

Disable At Startup

If this modifier only Hot Key is active and activated while the machine is booting,

TearOFFs will not load. If the “Show icon at startup” checkbox is on, you will see



Enable Tearing

If this modifier only Hot Key is active and activated, menu tearing is enabled when selecting from menus.

Disable Tearing

If this modifier only Hot Key is active and activated, menu tearing is disabled when selecting from menus.

Tear Off Title

If this modifier only Hot Key is active and activated when tearing a menu, a title will be torn instead of an entire menu.

Show/Hide TOMs

If this modifier plus key Hot Key is active and activated, all torn menus and titles will be hidden. If all torn menus are already hidden, it will show them.

Load TOM Positions

If this modifier plus key Hot Key is active and activated, all previously saved torn menu and title positions will be restored.

Save TOM Positions

If this modifier plus key Hot Key is active and activated, all TOM and TOT positions will be saved to disk. These positions are automatically restored when the application is launched, or if the Load TOM Positions Hot Key is activated.

TOMBars

A TOMBar is created by activating either the Horizontal TOMBar or Vertical TOMBar Hot Key. TOTs of all the menus in the menubar are created starting at the click location.

Horizontal TOMBar

If this modifier plus click Hot Key is active and activated, a horizontal TOMBar will be created where you have clicked.

For example, if you would create a horizontal TOMBar in the Finder, you would see the following.



Vertical TOMBar

If this modifier plus click Hot Key is active and activated, a vertical TOMBar will be created where you have clicked.

For example, if you would create a vertical TOMBar in the Finder, you would see the following.



Popup Menubar

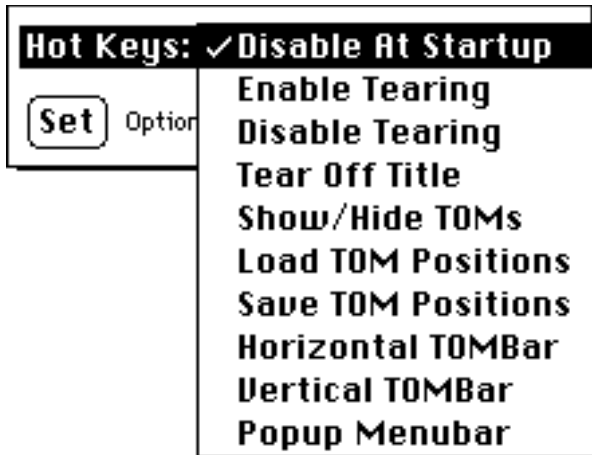
If this modifier plus click Hot Key is active and activated, a popup menubar of all the menus in the menubar will be created where you have clicked.

For example, if you do this in the Finder, you would see the following.



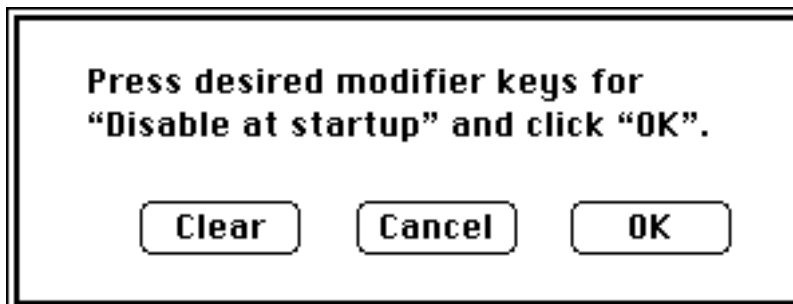
Configuring Hot Keys

Clicking in the Hot Keys popup menu will allow you to select the different Hot Keys to configure.



Modifier only Hot Keys

Click the “Set” button and the following dialog will appear.



Hold down the modifier key(s) you wish to activate the Hot Key and click the “OK” button. If you wish to deactivate this Hot Key click the “Clear” button. If you do not wish to change the Hot Key, click “Cancel”.

Modifier plus key Hot Keys

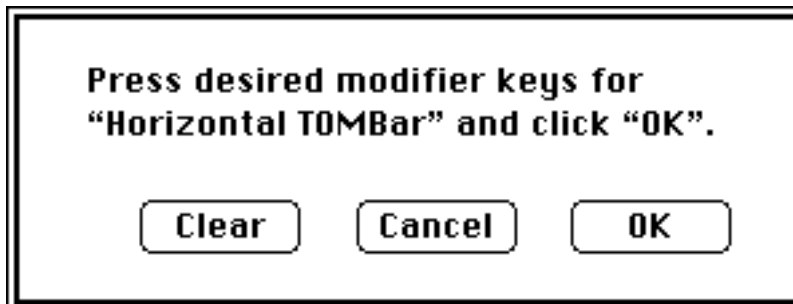
Click the “Set” button and the following dialog will appear.



Hold down the modifier key(s) and then type the key you wish to activate the HotKey . If you wish to deactivate this Hot Key click the “Clear” button. If you do not wish to change the Hot Key, click “Cancel.”

Modifier plus mouse Hot Keys

Click the “Set” button and the following dialog will appear.



Hold down the modifier key(s) you wish to activate the HotKey and click the “OK” button. If you wish to deactivate this Hot Key click the “Clear” button. If you do not wish to change the Hot Key, click “Cancel.”

Shareware Notice

TearOFFs is a shareware control panel. This means that the only way for the people responsible for creating the control panel to get paid, is for you to send in your shareware fee. The shareware fee for this product is \$25US.

To register, send \$25US to:

Bad Boys' Software

P.O. Box 22248

Lincoln, NE 68542-2248