

WindowWizard 1.1

Eric de la Musse - 10/91 - All rights reserved.

WindowWizard provides Macintosh computers running system 7 with a pop-up menu which shows :

- the windows of the application currently in the foreground.
- the background applications and their windows.

In other words, this menu makes it possible to switch quickly and easily between all the open applications and windows on your Macintosh.

I - MINIMUM CONFIGURATION

WindowWizard works on all Macintosh computers from the Mac Plus upwards, as long as you are using at least system 7. WindowWizard is not compatible with system 6.

II - INSTALLATION

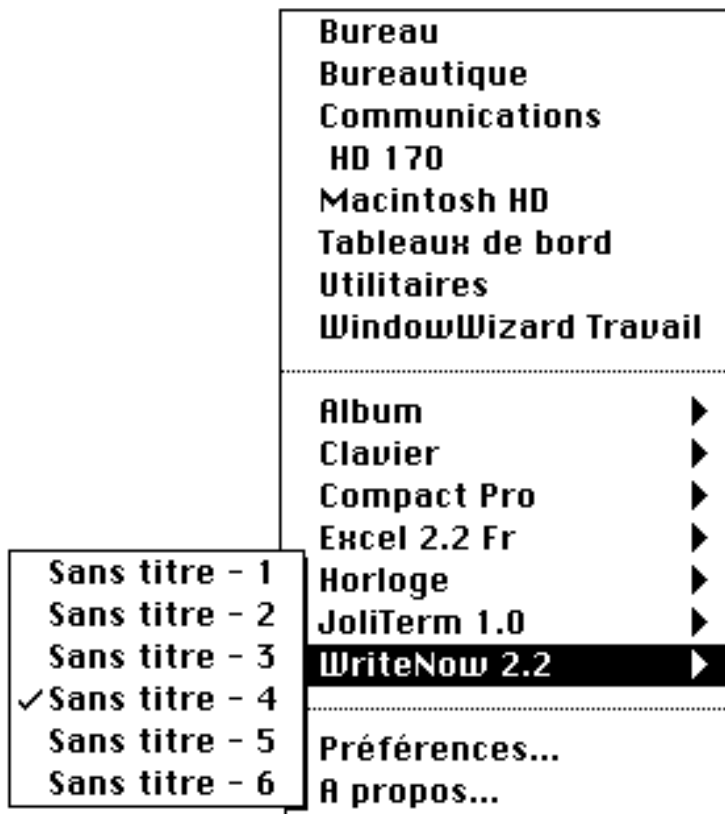
Drag the file "WindowWizard x.x" into your system folder; a dialogue box will alert you that this file must be installed in the Extensions folder; click on OK.

Experienced users may also directly drag the WindowWizard file into the Extensions folder. The result is the same.

Once initially installed, WindowWizard will only be active after rebooting.

III - OPERATION

The WindowWizard menu is structured as follows:



Three types of elements can be distinguished:

- foreground windows (those you are currently using).
- the other applications in memory where a hierarchic menu (in which the windows opened by the relative software are listed) is present for each application.
- the last element deals with parameters and information on the version of WindowWizard you are using.

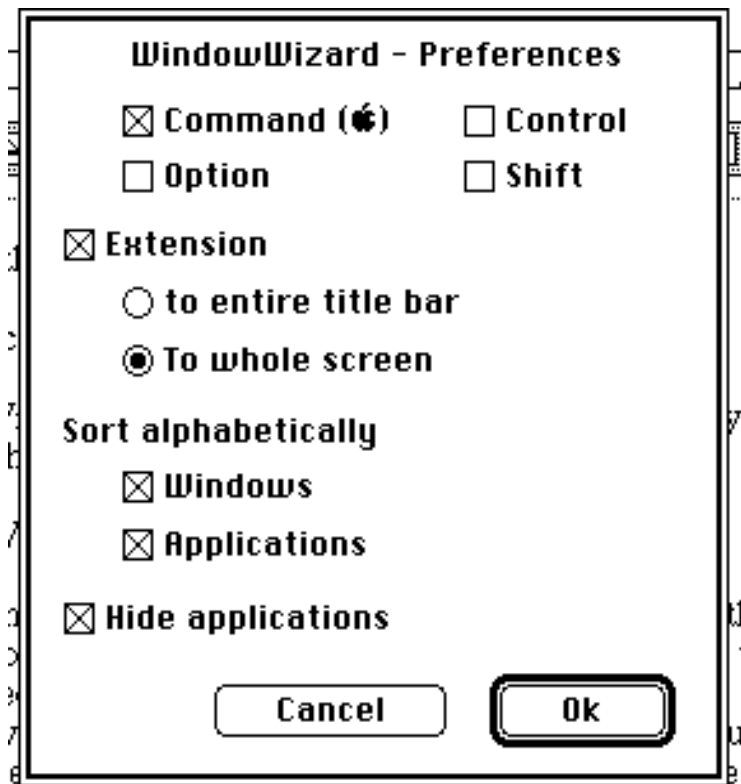
The two first elements of the Window Wizard menu do not need special explanation. Switching is done by simply making a choice in the menu.

For easy reference, the active window of each application is preceded by a check mark in the hierarchical menu. You will automatically go back to this window if you select only the application rather than a specific window.

The third part of the menu requires some additional explanation.

1/ Item "Preferences..." of the menu

You may customize WindowWizard through the following dialogue which is displayed by selecting "Preferences" in the menu:



a) activating the WindowWizard menu:

By default, the menu will appear in the window title. By thus restricting the activation area it is possible to drag your windows while still enabling nearly instantaneous access to the WindowWizard menu.

This may surprise - or even disturb - some users. So, if you prefer, activation can be extended either to the whole title bar or to the whole screen. By opting for one of these preferences you will slow access to the menu but, on the other hand, you will conveniently expand its activation area. This extended mode is only possible if you indicate one or several dead keys which, when pressed simultaneously with the mouse button, informs WindowWizard that you wish the menu displayed.

The dead keys can be combined in order to coexist with other extensions which may be activated in a similar manner. It is up to you to find a combination that doesn't conflict with your other extensions.

b) alphabetical sorting

By default, the WindowWizard menu shows the applications and windows in the order they were opened. When the memorized applications windows are numerous, you may find it better to opt for alphabetical sorting of the applications and/or windows in order to simplify your menu choice. This option is chosen through the 2 check boxes in the "Preferences" dialogue.

Note that modification of this setting deals only with objects opened after parametering. WindowWizard does not sort previously opened applications and windows.

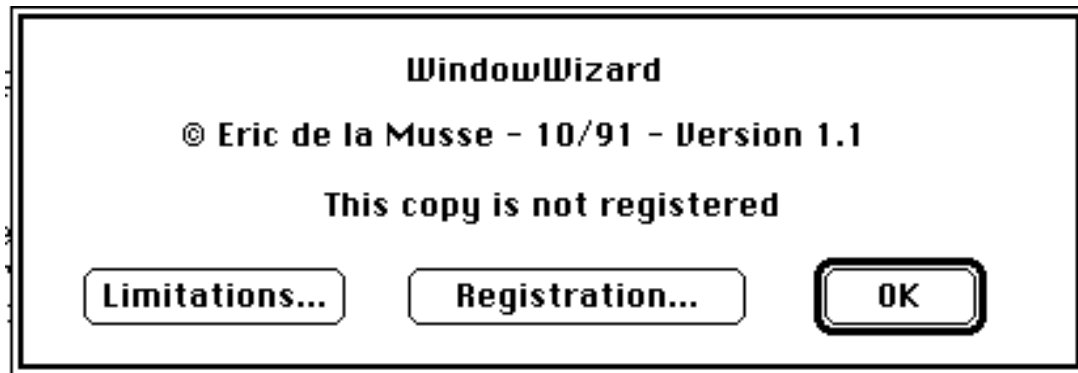
c) Hiding applications

WindowWizard may hide previously activated applications. In other words you will make one selection in the WindowWizard menu instead of two in the application menu. Check the "Hide applications" preference box for this feature.

This feature is especially helpful for users of small screens.

2/ Item "About..." of the menu:

Selecting this item displays the following dialogue box mentioning the WindowWizard version number (when contacting the author, do not forget to mention this number).



If you are using a demo version of WindowWizard, a "Registration" button and a "Limitations" button are displayed. If you have already registered, your name is displayed (see below for registration details).

The "Registration" button displays another dialogue for personalizing your copy of WindowWizard once you are registered.

IV/ USEFUL OPERATING INFORMATION

This section focuses on points which may surprise because they are in contradiction with some user's expectations.

a) Displaying the menu in the window title bar.

If you retain the default parameter you will expect to always see the menu in the title but might not always be the case. For specific reasons, some software uses windows without centered titles. In these cases the WindowWizard menu will not be automatically displayed if you click on the title. In these cases, you must click on the center of the title bar to activate the WindowWizard menu.

b) Abnormal behavior of some applications

Some applications (e.g. Excel) manage their windows in specific ways. They can even create hidden windows which nevertheless exist. These do not escape WindowWizard and will be found in the menu.

The "Desktop" window is another example. Don't be surprised by this. As far as the author is aware, this exceptional behavior does not disturb WindowWizard's performance.

c) Non or partial display of the menu

More often than not this happens because the software has just displayed a dialogue box which needs to be filled in before continuing working. WindowWizard takes this into account and forbids bypassing without displaying the menu. Nevertheless - and provided that the application respects Apple's recommendations - the movable dialogs are acknowledged by WindowWizard. In such a case you can display the menu but your choice is restricted to the list of background applications (and their windows).

In order to better understand the above explanation, go to the Finder and search in the File menu. Here, WindowWizard does not allow the selection of another window, but does allow switching to another application. Once in this application, WindowWizard will not link any hierarchical menu to the 'Finder' item, prohibiting return to the Finder other than by displaying the search window.

d) Displaying some windows several times in the menu

Just as some applications create hidden windows, others open identically titled windows. Dealing with this will be improved in a future version of WindowWizard allowing a menu choice for listing identically named windows.

V/ REGISTRATION - DIFFUSION - RIGHTS

WindowWizard is shareware and is not free of charge. This form of distribution allows testing of the software before acquiring it. If after testing you decide to keep it, you must pay the author a fee of \$20. Until you pay this fee, WindowWizard will be limited to no more than 4 windows for each application. However, WindowWizard has no limitations within 30 days of first utilization.

How to pay ? International transfer of funds is complicated and costly. You have 2 choices for this :

- either cash

- **or by registering on-line with Compuserve.** To do this you must go to Register Shareware area (type GO SWREG) and follow instructions (**registration ID is 170**).

As soon as your payment and registration request is received, you will receive a user code making your WindowWizard fully functional.

The information that should accompany your registration request is given in paragraph VII. Registration should be sent to:

8, rue de l'Eglise
75015 Paris
France

Diffusion of WindowWizard is free and encouraged as long as no monetary compensation, except for duplication fees, is asked for. This documentation must always be distributed with copies of WindowWizard.

Registered users may also replicate this software as long as they do not transmit the file "Preferences" which under no circumstances should be distributed (your name appears in this file).

The author reserves copyright for WindowWizard and accompanying documentation.

VI/ THANKS

Many thanks to those who beta-tested this software and who contributed to make it what it is: Alain Fercocq, Jean Pierre Nouet, Benoît Widemann, Airy André, les Quarante-Deux, Xavier Baron, Daniel Ranson, Thierry Delettre, Michel Strupichowicz and Mike Meade.

All of them devoted time and have been most helpful. Without their assistance many difficulties would not have been surmounted.

VII/ INFORMATION TO BE PROVIDED AT THE TIME OF REGISTRATION REQUEST

- Your family name, which generates your user code.
- Your Christian name
- Your complete address

The following information is optional, but will help the author improve future versions of the software:

- parameters you presently use with WindowWizard or expect to use (sorting, masking, extensions,).
- additional functions you would like to see in future versions
- difficulties encountered when using the software (bugs, obscure points, etc...).
- comments on distribution
- other comments.

The payment of the \$20 fee must be enclosed with your registration request.

VIII/ CONTACTING THE AUTHOR

By mail to :

Eric de la Musse

8, rue de l'Eglise
75015 Paris
France

On-line through :

Compuserve
User ID: 100022,611

or, exceptionally, through:

Internet: EDLM10àCalvacom.fr

For bug reports, please mention the number of the WindowWizard version you are using and details of your system configuration (there are many utilities that automatically generate a report of your configuration and using one makes certain that nothing is forgotten).