

,e,e,e,s,o @Ver 1.92
("®ïŠm"FSŠÂ« Windows XP, 2000, 98, Me, NT(4.0))

,f,t,h,È,e,s,ofNf%ofCfAf“fgfc□[f<,Â,·□B

“Á’¥

□™ftf@fCf<fŠfXfg,ì”•ª,Æftf@fCf<“]’—,ª•ÊfXfÆfbfh,È,ì,Â□Aftf@fCf<“]’—
‚,ð,μ,È,ª,ç□V,½,Èftf@fCf<‘€□ì,ª,Â,«„Ü,·□B

□™Š¿ŽšfR□[fh,ì•İŠ,ª,Â,«„Ü,·□B

□™Š¿Žš,ìftf@fCf<—¼,ðˆμ,μ,±,Æ,ª,Â,«„Ü,·□B

□™fTfufffBfÆfNfgfŠ,ðŠÜ,ß,½ftf@fCf<,ì“]’—,ª,Â,«„Ü,·□B

□™“r’t,Ü,Âf_fEf“f□□[fh,μ,½ftf@fCf<,ª, ,é,Æ,«□A,»,ì±,«„ðf_fEf“f□□[fh,Â,«„Ü,·□B

□™ftf@fCf<,ì“]’—,ð□A,¢,Â,Â,à’t’f,Â,«„Ü,·□B

□™f~f%□□[fŠf“fO<@“\,É,æ,è□Af□□[fJf<‘ª,ìftf@fCf<□□¬,ð,»,ì,Ü,ÜfzfXfg‘ª
‚,É□ÄÆ»,Â,«„Ü,·□BWebfy□[fW,ìftf@fCf<“]’—,È,Ç,É•Ö—~‚,Â,·□B

“®ïŠm"FSŠÂ«

FFFTP,íˆÈ%°,ìŠÂ«„,Â“®ïŠm"F,μ,Ä,¢,Ü,·□B
Windows XP
Windows 2000
Windows 98
Windows Me
Windows NT(4.0)

Windows 95,ìŠÂ«„ª,È,¢,½,ß□AWindows 95,Â,ì“®ïŠm"F,μ,Ä,¢,Ü,¹,ñ□B

,;Žg,¢,ì‘O,É

ˆÈ%°,ì□€—Ú,í□d—v,Â,·□B,““Ç,Ý,,¾,¾,¾,¢□B

fpfXf□□[fh,ìžæ,èˆμ,¢,É,Â,¢,Ä
Š¿Žš,ìftf@fCf<—¼,É,Â,¢,Ä

Žg,ϕ•û

%œ-Ê,ìà-¾

f[f<fAfhfÆfX

fzfXfg,Ö,ìÚ'±,ÆØ'f

ftf@fCf<^ê—

"l—f, [fh

f_fEf"f [fh

f_fEf"f [fh,ìŠm"F

fAfbfvf [fh

fAfbfvf [fh,ìŠm"E

f~f% [fŠ"fOfAfbfvf [fh

f~f% [fŠ"fOf_fEf"f [fh

ftf@fCf<,đŠJ,

ftf@fCf<íœ

ftf@fCf<-¼•ìX

'®«•ìX

ftfHf<f_ì¬

fufbfNf} [fN

ftf@fCf<,lÆŸõ

ftf@fCf<,l'đ

ftfBf<f^

ftfHf<f "ŽžÚ"®

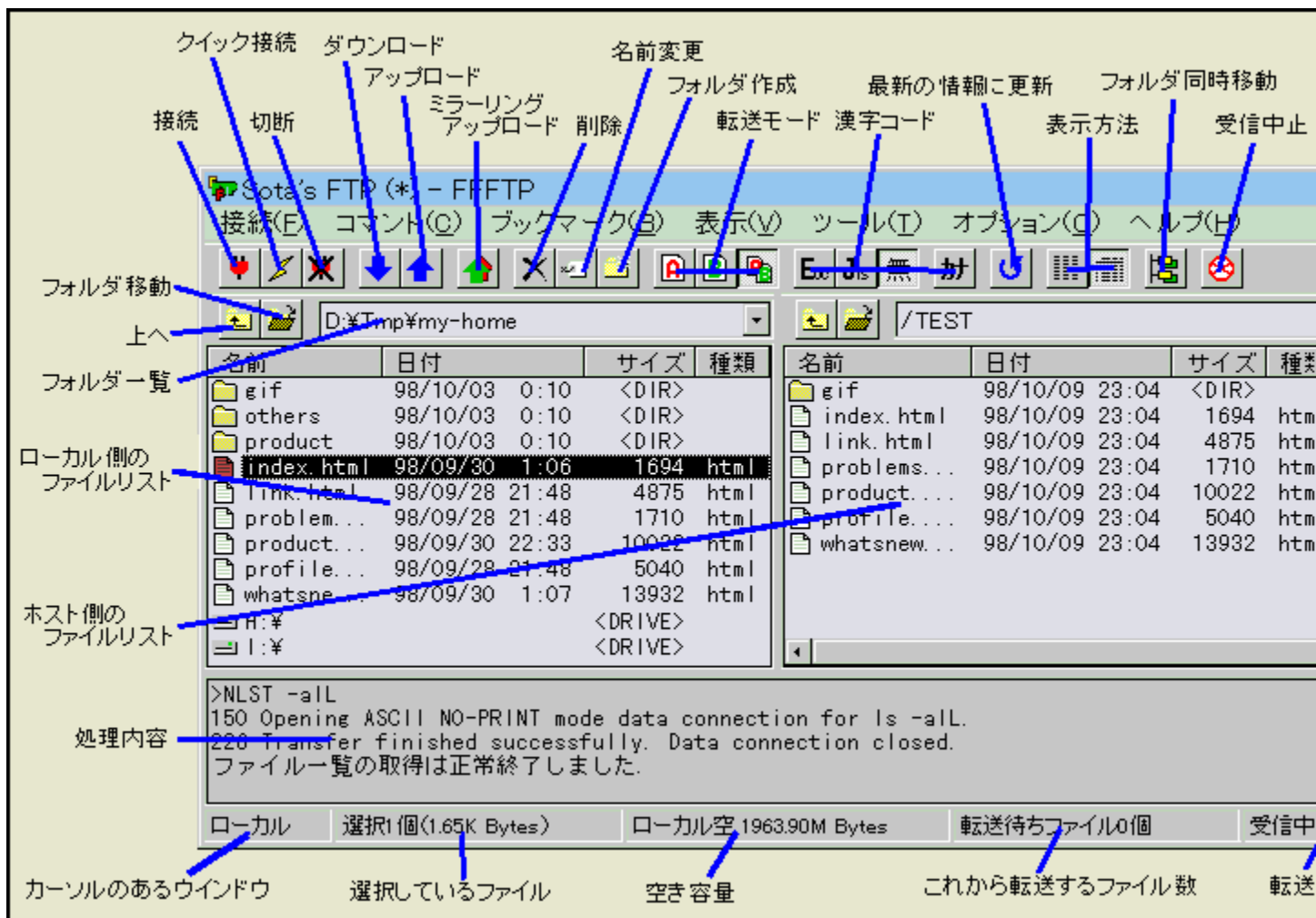
"C^Ó,lfRf}f"f

fRf}f"fhf% fCf"

fCf"f [fg

%œ-Ê,ì□à-¾

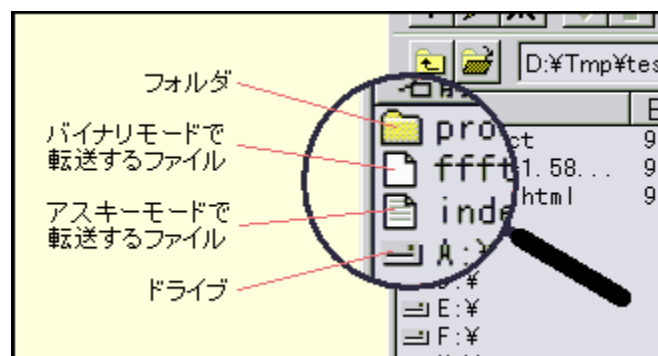
fEfCf“fhfE,ìŠe”•ª,í□AZŸ,ì“,«„ð,µ,Ü,·□B



ftf@fCf<-¼,ª,„Ä•Ÿ,µ,«„ê,È,¢žž□AfJ□[f\Ÿ<„ð,»„ì□ê□Š,É˘Ú“@„,;é,Æftf@fCf<-¼‘S‘ì,ð•Ÿ,µ,Ü,·□B

名前	日付
perl5.000man-j...	97/12/25 0:
binutils-2.8.1.tar.gz	12/26 0:
gcc-2.2.3.ta...	97/12/26 0:
gdb-4.13.tar.gz	97/12/26 0:

ftf@fCf<,ìfAfCfRf“,ížŸ,ì,æ,ª,É<æ•Ê,µ,Ä,¢,Ü,·□B



f□□[f<fAfhfœfX

FFFTP

who@where.com

メールアドレスを入力してください。このアドレスは
anonymous-FTPのパスワードとして使用します。

ここに入力したメールアドレスは、後でオプションの
「ユーザ」タブのところで変更できます。

OK

キャンセル

ヘルプ


f□□[f<fAfhfœfX,ð“ü—í,μ,Ä,,¾,³,¢□B

,±,±,Å“ü—í,μ,½f□□[f<fAfhfœfX,í□Aanonymous-FTP,É□Ú‘±
,·,éŽž,ìfpfXf□□[fh,Æ,μ,ÄŽg—p,μ,Ü,·□B

“ü—í,μ,½f□□[f<fAfhfœfX,í□AŠÂ««□Ý’è,ìf†□[fUf^fu,Å•ï□X,Å,«,Ü,·□B

fzfXfg,Ö,ì□Ú±,Æ□Ø'f


□i“o~^,μ,½fzfXfg,Ö□Ú±

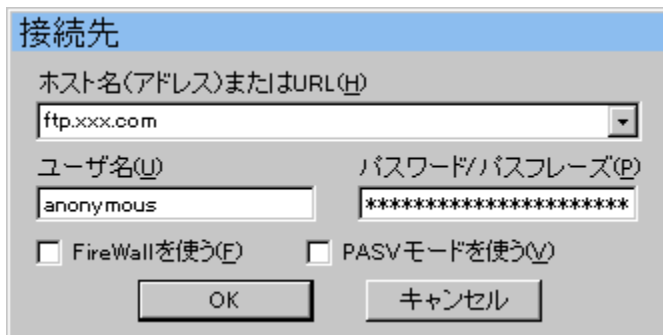
□Ú±f{f^f“,ð%Ÿ,·,Æ□AfzfXfg^ê——
fEfCf“fhfE,a^Ž!,³,ê,Ü,·□B“o~^,μ,Ä, ,éfzfXfg,ð'l,ñ,Å□A□Ú±f{f^f“,ð%Ÿ,μ,Ü,·□B



□i□a,±,ìfEfCf“fhfE,í□A'â,«,³,ð•ì!,,é,±,Æ,a,Ä,«,Ü,·□j

□ifzfXfg-¼□ifAfhfÆfX□j,Ü,½,íURL,ð“ü—í,μ,Ä□Ú±

fNfCfbfN□Ú±f{f^f“,ð%Ÿ,μ,Ü,·□BzfXfg—
¼□ifAfhfÆfX□j,Ü,½,íURL□Af†□[fU-¼□AfpfXf□□[fh□i,Ü,½,ífpfXftfÆ□[fY□j,ð“ü
—í,μ,Ü,·□B
URL,ð“ü—í,·,éŽž,ífRf}f“fhf%oCf“,Æ“,¶Æ`Ž®,ÅŽw'è,μ,Ä,,¾,³,¢□B



□Ú±,·,éfzfXfg,a^zfXfg^ê——,É“o~^,³,ê,Ä,¢,é,Æ,«,í□AfzfXfg^ê——,É“o~^,³,ê,Ä,¢
,éFireWall□APASVf,□[fh□ALISTfRf}f“fh,ì,Ÿ,ðŽg—p,·,é,©,Ç,a,©,ì□Ÿ'è,ðŽg,¢,Ü,·□B


□ifRf}f“fhf%oCf“,ÅfzfXfg,ðŽw'è,μ,Ä□Ú±

fRf}f“fhf%oCf“,ðŽQ□Æ,μ,Ä,,¾,³,¢□B


□Ú±,·,éfzfXfg,a^zfXfg^ê——,É“o~^,³,ê,Ä,¢,é,Æ,«,í□AfzfXfg^ê——,É“o~^,³,ê,Ä,¢

,éFireWall□APASVf,□[fh□ALISTfRf}f“fh, ò,Ý,đŽg—p,·,·,é,©,Ç,ϣ,©, ò□Ý'è,đŽg,ϕ,Ü,·□B

□i□Ú‘±,đ“r’†,Å’†Ž~,·,·,é□ê□‡

□Ú‘±,đ“r’†,Å’†Ž~,·,·,é,Æ,«,Í□A□ø’ff{f^f“,đ%Ÿ,μ,Ü,·□B

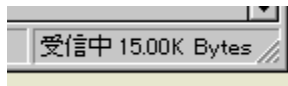
□i□ø’f


□ø’ff{f^f“,đ%Ÿ,μ,Ü,·□B

ftf@fCf<^ê——

ftf@fCf<^ê——,ÍŽ©“®“l,É•\Ž! ,³,ê,Ü,·□B□ifzfXfg'¤,ìftf@fCf<^ê——
,Í□AfzfXfg,É□Ú±,μ,Ä,¢,È,¢Žž,Í•\Ž! ,³,ê,Ü,¹,ñ□B□j

zfXfg'¤,ìftf@fCf<^ê——,ðŽó□M,μ,Ä,¢
,éŜÔ□AfXfe□[f^fXfEfCf“fhfE,ÉŽó□M□ó<μ,^a•\Ž! ,³,ê,Ü,·□B



zfXfg'¤,ìftf@fCf<^ê——,ìŽó□M,^ax,¢Žž□AŽó□M'tŽ~f{f^f“
,ð%Ÿ,·,Æ'tŽ~,Ă,«,Ü,·□B□if^fCf~f“fO,É,æ,Ă,Ä,Í,·,®,É'tŽ~,Ă,«,È,¢□ê□‡,^a, ,è,Ü,·□j

“]’—f,□[fh

FTP,Åftf@fCf<,ð“]’—,·,éŽŽ,Í□AŽŸ,ì,Q,Â,ì“]’—f,□[fh,^a,è,Ü,·□B

fc□[f<fo□[,Å□Ý’è,Å,«,Ü,·□B



,Ü,½□AŠg’£Žq,È,Ç,É,æ,èŽ©“®“l,É“]’—f,□[fh,ð□Ø,è‘Ö,^l,é,±,Æ,^a,Å,«,Ü,·□B



□ifAfXfL□[“]’—f,□[fh

f□f,’ ,È,Ç,Å,Ý,é,±,Æ,ì,Å,«,éftf@fCf<□iŠg’£Žq,^a.txt□A.html

,È,Ç□j,ðfAfbfvf□□[fh□Af_fEf“f□□[fh,·,é,Æ,«,ÉŽg—p,μ,Ü,·□B

ftf@fCf<,l%ü□s•¶Žš,^a•iŠ,·³,ê,Ü,·□B

□ifAfbfvf□□[fh□Af_fEf“f□□[fh,μ,½ftf@fCf<,lTfCfY,Í□AÆ³,lftf@fCf<,lTfCfY
,©,çŽáŠ±•i,í,è,Ü,·□B□j

%œ’œftf@fCf<,È,Ç,Í□AfAfXfL□[“]’—f,□[fh,Å“]’—,μ,È,¢,Å,,³/₄,³,¢□B%œ’œ,^a□³,μ,-
•\Ž^l,³,ê,È,,È,è,Ü,·□B


□ifofCfifŠ“]’—f,□[fh

%œ’œftf@fCf<□AŽÀ□sftf@fCf<,È,Ç,ðfAfbfvf□□[fh□Af_fEf“f□□[fh,·,é,Æ,«,ÉŽ
g—p,μ,Ü,·□B

f_fEf“f□□[fh

fzfXfg,©,çf□□[fJf<,Öftf@fCf<,đ“]—,μ,Ü,·□B
•i□”,lftf@fCf<□Aftfufthf<f_Ê%°,l'S,Ä,lftf@fCf<,đ,Ü,Æ,ß,Äf_fEf“f□□[fh,·,é,±
,Æ,à,Ä,«,Ü,·□B

ŽŸ,ì,æ,ª,Ê'€□ì•û—@,ª, ,è,Ü,·□B

□œf_fEf“f□□[fh,·,éftf@fCf<,đ'l,ñ,Å□Af_fEf“f□□[fhf{f^f“,đ%Ÿ,·,©□AfRf}
f“fhf□fjf...□[,l_fEf“f□□[fh,đ'l,Ñ,Ü,·□B

□œfzfXfgª,lftf@fCf<Ê——,©,ç□Af□□[fJf<ª,lftf@fCf<Ê——
,Öfhf%°fbfO□•fhf□bfv,μ,Ü,·□B

□œf_fEf“f□□[fh,·,éŽŽ,Éftf@fCf<—¼,đ•l,1/2,¢ŽŽ,Í□AfRf}f“fhf□fjf...□[,l—
¼°O,đ•l,ñ,Äf_fEf“f□□[fh,đ'l,Ñ□Aftf@fCf<—¼,đ“ü—Í,μ,Ü,·□B

□œftf@fCf<Ê——,É•Žl,³,ê,Ê,¢ftf@fCf<,ª, ,éŽŽ,Í□AfRf}f“fhf□fjf...□[,l—
¼°O,đŽw'è,μ,Äf_fEf“f□□[fh,đ'l,Ñ□Aftf@fCf<—¼,đ“ü—Í,μ,Ü,·□B

□œftf@fCf<,Ä, ,é,Í,·,l,à,l,ªftfHf<f_Æ,μ,Äftf@fCf<Ê——,É•Žl,³,ê,Ä,¢,éŽŽ,Í□AfRf}
f“fhf□fjf...□[,lftf@fCf<,Æ,μ,Äf_fEf“f□□[fh,đ'l,Ñ,Ü,·□B

f_fEf“f□□[fh't,Í□A□ó<μ,đŽl,·fEfCf“fhfE,ª•Žl,³,ê,Ü,·□B



□if_fEf“f□□[fh,·,éftf@fCf<,l'Ç%°Á

f_fEf“f□□[fh't,Ä,à□ã<L,l_fEf“f□□[fh,ì'€□ì,đ□s,ª,±,Æ,ª,Ä,«,Ü,·□B

□if_fEf“f□□[fh,ì'tŽ~

,±
,lftf@fCf<,đ'tŽ~f{f^f“,đ%Ÿ,·,Æ□Af_fEf“f□□[fh't,lftf@fCf<,l_fEf“f□□[fh,đ'tŽ~
,μ,Ü,·□B•i□”,lftf@fCf<,đf_fEf“f□□[fh,μ,Ä,¢
,é,Æ,«,Í□AŽŸ,lftf@fCf<,l_fEf“f□□[fh,đ□s,È,¢,Ü,·□B

ŽŸ`È□~'†Ž~f{f^f“,đ%Ÿ,.,Æ□ACE»□Ýf_fEf“f□□[fh,μ,Ä,¢
,éftf@fCf<,ìŽŸ`È□~,ìftf@fCf<,ìf_fEf“f□□[fh,đ'†Ž~,μ,Ü,·□B□i•i□”,ìftf@fCf<,đf_f
Ef“f□□[fh,μ,Ä,¢,éŽŽ,É—LÆø,Ä,·□j

'S,Ä'†Ž~f{f^f“,đ%Ÿ,.,Æ□A'S,Ä,ìftf@fCf<,ìf_fEf“f□□[fh,đ'†Ž~,μ,Ü,·□B□i•i□”,ìftf@
fCf<,đf_fEf“f□□[fh,μ,Ä,¢,éŽŽ,É—LÆø,Ä,·□j

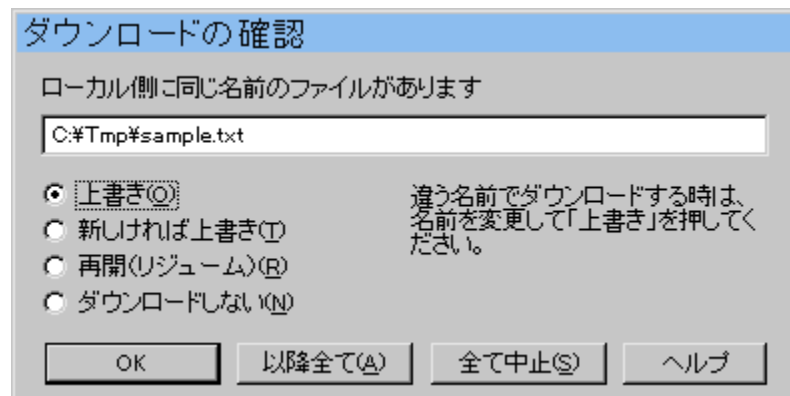
□if_fEf“f□□[fh,ì□ÄŠJ□ifŠfWf...□[f€□j

f_fEf“f□□[fh,ìŠm”E,đŽQ□Æ,μ,Ä,,³/₄,³,¢□B

f_fEf“f□□[fh,İŠm”F

f_fEf“f□□[fh,·,éftf@fCf<,Æ“¯,Œ—¼‘O,İftf@fCf<,af□□[fJf<‘α,É, ,é,Æ,«,Í□Af_fEf“f
□□[fh,İŠm”FfEfCf“fhfE,ª•Ž!‘,³,ê,Ü,·□B

fİfvfVf±f“,‘€□İ,İf_fEf“f□□[fhŽž,İ□Ý‘è,a□ã□‘,«,İžž,Í□AŠm”FfEfCf“fhfE,ð•Ž!‘,¹,,É
□A,Ä,Ë,É□ã□‘,«,μ,Ü,·□B



□i□ã□‘,«

ftf@fCf<,ð□ã□‘,«,μ,Ü,·□B

□i□V,μ,¯,ê,İ□ã□‘,«

ftf@fCf<,İ‘ú•t,ð”äŠr,μ□AfzfXfg,İftf@fCf<,İ,Ü,ª,a□V,μ,¯,ê,İf_fEf“f□□[fh,μ,Ü,·□B

□i□ÄŠJ□ifŠfWf...□[f€□j

“r”t,Ü,Åf_fEf“f□□[fh,μ,½ftf@fCf<,ª, ,é,Æ,«□A,»,İ‘±,«,ðf_fEf“f□□[fh,μ,Ü,·□B
fAfXfL□[f,□[fh,Åf_fEf“f□□[fh,·,é,Æ,«,Í□AfŠfWf...□[f€,Í,Ä,«,Ü,¹,ñ□B

□!fzfXfg,É,æ,Ä,Ä,İfŠfWf...□[f€,ÉÎ‰ž,μ,Ä,¢,È,¢□ê□±,ª, ,è,Ü,·□B

□if_fEf“f□□[fh,μ,È,¢

f□□[fJf<‘α,É“¯,Œ—¼‘O,İftf@fCf<,ª, ,é,Æ,«,Í□Af_fEf“f□□[fh,μ,Ü,¹,ñ□B

□iftf@fCf<—¼,ð•İ□X,·,é

ftf@fCf<—¼,ð•İ□X,μ,Ä□ã□‘,«,ð‰Ÿ,·,±,Æ,É,æ,è□A^á,ª—
¼‘O,Åf_fEf“f□□[fh,Ä,«,Ü,·□B

□i^È□~‘S,Ä


,±,ê^È□~□Af_fEf“f□□[fh,·,éftf@fCf<,Æ“¯,Œ—¼‘O,İftf@fCf<,af□□[fJf<‘α,É, ,Ä,Ä,à□

AŠm”F,đ,¹,,É□A“¯,Ŧ•û-@,Å□^—□,μ,Û,·□B

fAfbfvf□□[fh

f□□[fJf<,©,çfzfXfg,Öftf@fCf<,đ“]—,μ,Ü,·□B
•;□”,lftf@fCf<□AftTfutfHf<f_ˆÈ%°,l'S,Ä,lftf@fCf<,đ,Ü,Æ,ß,ÄfAfbfvf□□[fh,·,é,±
,Æ,à,Ä,«,Ü,·□B

ŽŸ,ì,æ,ª,È'€□ì•û—@,ª, ,è,Ü,·□B

□œfAfbfvf□□[fh,·,éftf@fCf<,đ'l,ñ,Å□AfAfbfvf□□[fhf{f^f“,đ%Ÿ,·,©□ARf}
f“fhf□fjf...□[l,fAfbfvf□□[fh,đ'l,Ñ,Ü,·□B

□œf□□[fJf<ª,lftf@fCf<ˆê——,©,ç□AfzfXfgª,lftf@fCf<ˆê——
,Öfhf%°fbfO□•fhf□fbfv,μ,Ü,·□B

□œfGfNfXfvf□□[f%,È,Ç,©,ç□AfzfXfgª,lftf@fCf<ˆê——
,Öfhf%°fbfO□•fhf□fbfv,μ,Ü,·□B

□œfAfbfvf□□[fh,·,éŽž,Éftf@fCf<—¼,đ•ì,½,¢Žž,í□ARf}f“fhf□fjf...□[l—
¼'O,đ•ì,,ÄfAfbfvf□□[fh,đ'l,Ñ□Aftf@fCf<—¼,đ“ü—í,μ,Ü,·□B

fAfbfvf□□[fh't,í□A□ó<μ,đŽì,·fEfCf“fhfE,ª\Žì,³,è,Ü,·□B



□i fAfbfvf□□[fh,·,éftf@fCf<,l'Ç%°Á

fAfbfvf□□[fh't,É□Aftf@fCf<fŠfXfg,lftf@fCf<,đ'l,ñ,ÅfAfbfvf□□[fhf{f^f“,đ
%Ÿ,μ,Ü,·□B

□i fAfbfvf□□[fh,ì'tŽ~

±
,lftf@fCf<,đ'tŽ~f{f^f“,đ%Ÿ,·,Æ□AfAfbfvf□□[fh't,lftf@fCf<,lAfbfvf□□[fh,đ'tŽ
~,μ,Ü,·□B•;□”,lftf@fCf<,đfAfbfvf□□[fh,μ,Ä,¢
,é,Æ,«,í□AŽŸ,lftf@fCf<,lAfbfvf□□[fh,đ□s,È,¢,Ü,·□B

ŽŸˆÈ□~'tŽ~f{f^f“,đ%Ÿ,·,Æ□AÆ»□ÝfAfbfvf□□[fh,μ,Ä,¢
,éftf@fCf<,lŽŸˆÈ□~,lftf@fCf<,lAfbfvf□□[fh,đ'tŽ~,μ,Ü,·□B□i□”,lftf@fCf<,đfAf

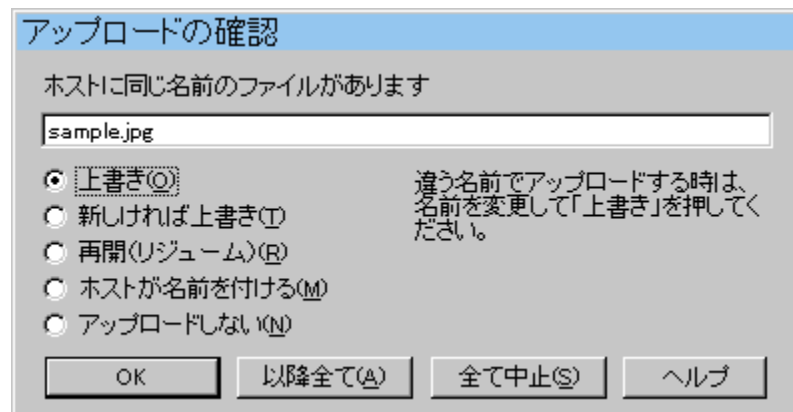
bfvf[fh,μ,Ä,¢,éŽž,É—LŒø,Å,·j

‘S,Ä’tŽ~f{f^f“,đ%öŸ,·,Æ□A‘S,Ä,łftf@fCf<,łfAfbfvf[fh,đ’tŽ~,μ,Ü,·□B□i•i□”,łftf@fCf<,đfAfbfvf[fh,μ,Ä,¢,éŽž,É—LŒø,Å,·j

fAfbfvf[fh,Šm”F

fAfbfvf[fh,·éftf@fCf<,Æ“¬,¶-¼‘O,̀ftf@fCf<,ªfzfXfg‘ª,É, ,é,Æ,«,ÍAfAfbfvf
[fh,Šm”FfEfCf“fhfE,ªŽ!³,ê,Ü,·B

fIfvVf±f“,̀€□,̀fAfbfvf[fhŽž,̀Y‘è,ªā□‘,«,̀žž,ÍAŠm”FfEfCf“fhfE,ð·Ž!¹,_,É
□A,Ä,Ë,É□ā□‘,«,μ,Ü,·B



□i□ā□‘,«

ftf@fCf<,ð□ā□‘,«,μ,Ü,·B

□i□V,μ,¬,ê,Î□ā□‘,«

ftf@fCf<,̀“ú•t,ð”äŠr,μ□Af□□[fJf<‘ª,̀ftf@fCf<,̀,Ü,ª
,ª□V,μ,¬,ê,ÎfAfbfvf□□[fh,μ,Ü,·B

□i□ÄŠJ□ifŠfWf...□[f€□j

“r”t,Ü,ÄfAfbfvf□□[fh,μ,½ftf@fCf<,ª, ,é,Æ,«□A,»,̀±,«,ðfAfbfvf□□[fh,μ,Ü,·B
fAfXfL□[f,□[fh,ÄfAfbfvf□□[fh,·,é,Æ,«,ÍAfŠfWf...□[f€,Í,Ä,«,Ü,¹,ñ□B

□ifzfXfg,É,æ,Ä,Ä,ífŠfWf...□[f€,Éî‰ž,μ,Ä,¢,È,¢□ê□±,ª, ,è,Ü,·B

□ifzfXfg,ª-¼‘O,ð•t,¬,é

fAfbfvf□□[fh,·,éftf@fCf<,̀-¼‘O,ðfzfXfg,ªÆ^è,μ,Ü,·B

—á□j sample.txt □” sample.txt.1

□ifAfbfvf□□[fh,μ,È,¢

fzfXfg‘ª,É“¬,¶-¼‘O,̀ftf@fCf<,ª, ,é,Æ,«,ÍAfAfbfvf□□[fh,μ,Ü,¹,ñ□B

□i**ftf@fCf**◀-¼,đ•İ□X,·,é

ftf@fCf◀-¼,đ•İ□X,μ,Ä□**ã**□',«,ð%öŸ,·,±,Æ,É,æ,è□A^á,¤-
¼'O,ÅfAfbfvf□□[fh,Å,«,Ü,·□B

□i^È□~'S,Ä

,±,ê^È□~□AfAfbfvf□□[fh,·,éftf@fCf<,Æ“¬,¶-¼'O,ìftf@fCf<,ªfzfXfg'¤,É, ,Á,Ä,à□A
Šm”F,đ,¹,,É□A“¬,¶•û-@,Å□^—□,μ,Ü,·□B

f~f%□[fŠf“fOfAfbfvf□□[fh

f□□[fJf<‘α,ì)ftf@fCf<□^ftfHf<f_“à—e,đ□AfTfuftfHf<f_đŠÜ,ß,ÄfzfXfg‘α
,É□ÄÆ»,μ,Ü,·□Bf□□[fJf<‘α,ÆfzfXfg‘α,ì)ftf@fCf<□^ftfHf<f_□\□-,a“□,¶,É,È,è,Ü,·□B

□!f~f%□[fŠf“fOfAfbfvf□□[fh,ì)ftf@fCf<,ì□í□œ,à□s,¢,Ü,·□B□\•a,É,2’□^Ó,,¾,¾,¢□B

f~f%□[fŠf“fOfAfbfvf□□[fh,ì□^—□,É,Â,¢,Ä

f~f%□[fŠf“fOfAfbfvf□□[fh,ì□A^È%°,ì□^—□,đ□s,¢,Ü,·□B

(1) fzfXfg‘α,ì,Ý,É—

L,éftf@fCf<□^ftfHf<f_đ□í□œ,·,é□B□ifTfuftfHf<f_“à,ì)ftf@fCf<,đŠÜ,¶□j

(2) f□□[fJf<‘α,ì,Ý,É—L,é□A,·,é,¢,í□□[fJf<‘α,ì,Ü,α

,a□V,μ,¢ftf@fCf<,đfAfbfvf□□[fh,·,é□B□ifTfuftfHf<f_đŠÜ,¶□j

ミラーリング前

ローカル側

名前	日付	サイズ
gif	98/04/25 20:00	<DIR>
others	98/04/25 20:00	<DIR>
product	98/04/25 20:00	<DIR>
index.html	98/04/25 20:00	1602
link.html	98/04/25 20:00	4859
problems.html	98/04/25 20:00	1637
product.html	98/04/25 20:00	8760
whatsnew.html	98/04/25 21:00	18589

ホスト側がないので
転送する

ホスト側

名前	日付	サイズ
bitmap	98/04/25 20:00	<DIR>
gif	98/04/25 20:00	<DIR>
product	98/04/25 20:00	<DIR>
index.html	98/04/25 20:00	1674
link.html	98/04/25 20:00	4931
product.html	98/04/25 20:00	9204
whatsnew.html	98/04/25 20:00	20203

ローカル側がない
ので削除する

ホスト側より新しい
ので転送する

ミラーリング後

ローカル側

名前	日付	サイズ
gif	98/04/25 20:00	<DIR>
others	98/04/25 20:00	<DIR>
product	98/04/25 20:00	<DIR>
index.html	98/04/25 20:00	1602
link.html	98/04/25 20:00	4859
problems.html	98/04/25 20:00	1637
product.html	98/04/25 20:00	8760
whatsnew.html	98/04/25 21:00	18589

ローカル側は変化なし

ホスト側

名前	日付	サイズ
gif	98/04/25 20:00	<DIR>
others	98/04/25 22:00	<DIR>
product	98/04/25 20:00	<DIR>
index.html	98/04/25 20:00	1674
link.html	98/04/25 20:00	4931
problems.html	98/04/25 22:00	1739
product.html	98/04/25 20:00	9204
whatsnew.html	98/04/25 22:00	20203

1つのフォルダを削除し
1つのフォルダと
2つのファイルを転送

□!f~f%□[fŠf“fOfAfbfvf□□[fh,Â,í□A•Ž!,μ,Ä,¢,éftfHf<f_^È%°,ì‘S,Ä,ì)ftf@fCf<,a□^
—□,ìî□Ü,Æ,È,è,Ü,·□Bftf@fCf<^è—fEfCf“fhfE,Ä,ì)ftf@fCf<,ì‘ä,í‘Ó—


i,đŽ□,č,Ü,¹,ñ□B

□!f!fvfVf±f“□Ý'è,ìf~f%□[fŠf“fO,Å□AfAfbfvf□□[fh,μ,È,¢ftf@fCf<□AfzfXfg,©,ç
□í□œ,μ,È,¢ftf@fCf<,đŽw'è,·,é,±,Æ,^a,Å,«,Ü,·□B

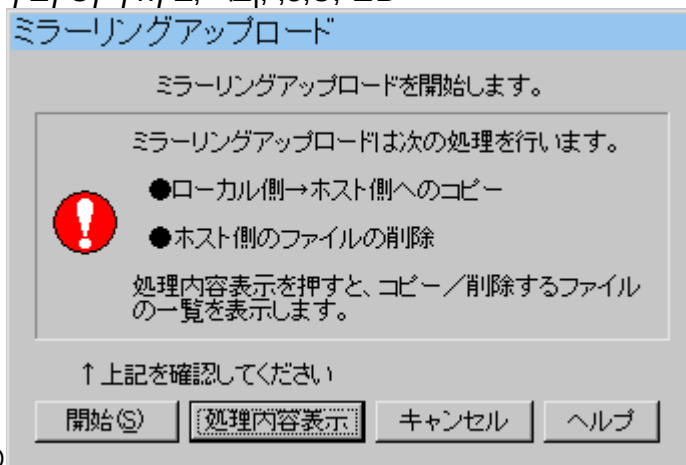
Žg,¢•û

(1) f□□[fJf<'□□AfzfXfg'¤,Æ,à,É□Af~f%□[fŠf“fO,μ,½,¢ftfHf<f_,đ•Ž!,μ,Ü,·□B

(2) fRf}f“fhf□fj f...

□[,ìf~f%□[fŠf“fO fAfbfvf□□[fh,đ!l,Ñ,Ü,·□B f~f%□[fŠf“fO fAfbfvf□□[fhf{f^f“
,à““,ŋ“,«,Å,·□B

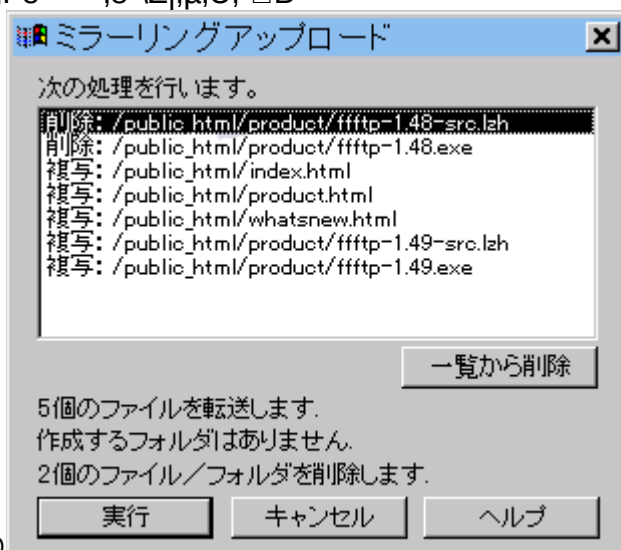
(3) Šm”FfEfCf“fhfE,^a•Ž!,³,ê,Ü,·□B



□@□@

(4) □^—□“à—

e•Ž!f{f^f“,đ%•Ÿ,·,Æ□Af~f%□[fŠf“fO,Å□í□œ,·,éftf@fCf<□AfAfbfvf□□[fh,·,éftf
@fCf<,îê—,đ•Ž!,μ,Ü,·□B



□@□@

□@□@□i□^a,±,̀fEfCf“fhfE,Í□A‘å,«,³,ð•İ,!,é,±,Æ,^a,Å,«,Ü,·□j

,±,îê——,©,ç□€—Ú,ðŽæ,è□œ,,Æ□AŽæ,è□œ,¢,½□^—□,Í□s,¢,Ü,¹,ñ□B□í□œ,μ,½,-
,È,¢ftf@fCf<□AfAbfvf□□[fh,μ,½,,È,¢ftf@fCf<,^aŠÜ,Ü,ê,Ä,¢,éŽž,ÉŽg—p,μ,Ü,·□B

$f \sim f\% \square [f\check{S}f" fOf_fEf" f \square \square [fh$

$fzfXfg'a, \grave{I}ftf@fCf<\square^ftfHf<f_ " \grave{a} - e, \delta \square AfTfuftfHf<f_ , \delta \check{S}\ddot{U}, \beta, \check{A}f \square \square [fJf<'a$
 $, \acute{E} \square \check{A} \check{E} \gg, \mu, \ddot{U}, \cdot \square B fzfXfg'a, \check{A}f \square \square [fJf<'a, \grave{I}ftf@fCf<\square^ftfHf<f_ \square \square \neg, a^{\neg}, \P, \acute{E}, \check{E}, \grave{e}, \ddot{U}, \cdot \square B$

$\square, f \sim f\% \square [f\check{S}f" fOf_fEf" f \square \square [fh, \grave{I}ftf@fCf<, \grave{I} \square \square \textcircled{e}, \grave{a} \square s, \Phi, \ddot{U}, \cdot \square B \square \backslash \bullet^a, \acute{E}, 2', \square^{\circ} \ddot{O}, \cdot, \frac{3}{4}, \frac{3}{4}, \Phi \square B$

$f \sim f\% \square [f\check{S}f" fOf_fEf" f \square \square [fh, \grave{I} \square \neg \square, \acute{E}, \hat{A}, \Phi, \check{A}$

(1) $f \square \square [fJf<'a, \grave{I}, \acute{Y}, \acute{E} -$

$L, \acute{e}ftf@fCf<\square^ftfHf<f_ , \delta \square \square \textcircled{e}, \cdot, \acute{e} \square B \square ifTfuftfHf<f_ " \grave{a}, \grave{I}ftf@fCf<, \delta \check{S}\ddot{U}, \text{p} \square j$

(2) $fzfXfg'a, \grave{I}, \acute{Y}, \acute{E} - L, \acute{e} \square A, \cdot, \acute{e}, \Phi, \acute{I}fzfXfg'a, \grave{I}, \ddot{U}, a$

$,^a \square V, \mu, \Phi ftf@fCf<, \delta f_fEf" f \square \square [fh, \cdot, \acute{e} \square B \square ifTfuftfHf<f_ , \delta \check{S}\ddot{U}, \text{p} \square j$

$\square, f \sim f\% \square [f\check{S}f" fOf_fEf" f \square \square [fh, \check{A}, \acute{I} \square A \bullet \check{Z}!, \mu, \check{A}, \Phi, \acute{e}ftfHf<f_ \hat{E} \% ^{\circ}, \grave{I}'S, \check{A}, \grave{I}ftf@fCf<, a \square \neg -$
 $\square, \acute{I} \hat{I} \square \ddot{U}, \check{A}, \check{E}, \grave{e}, \ddot{U}, \cdot \square B ftf@fCf<\hat{e} - fEfCf" fhfE, \check{A}, \grave{I}ftf@fCf<, \acute{I}'\delta, \acute{I}'\acute{O} -$
 $\acute{I}, \delta \check{Z} \square, \grave{I}, \ddot{U}, \frac{1}{2}, \check{n} \square B$

$\square, f \text{I}fvfVf \pm f" \square \acute{Y} \grave{e}, \grave{I}f \sim f\% \square [f\check{S}f" fO, \check{A} \square Af_fEf" f \square \square [fh, \mu, \acute{E}, \Phi ftf@fCf<\square Af \square \square [fJf<, \textcircled{C},$
 $\varsigma \square \square \textcircled{e}, \mu, \acute{E}, \Phi ftf@fCf<, \delta \check{Z}w' \grave{e}, \cdot, \acute{e}, \pm, \check{A}, a, \check{A}, \ll, \ddot{U}, \cdot \square B$

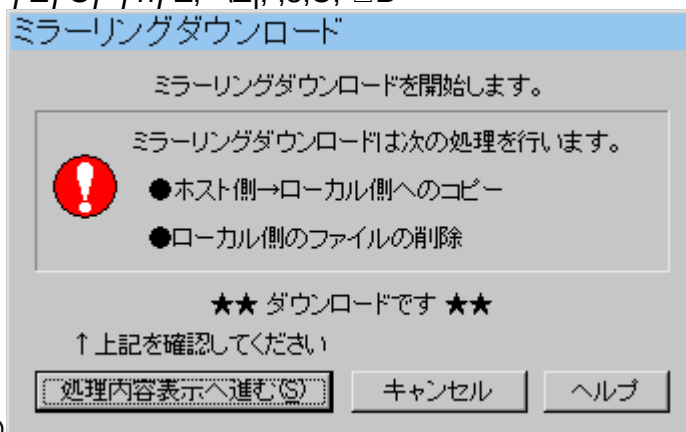
$f \sim f\% \square [f\check{S}f" fOf_fEf" f \square \square [fh, \acute{I} \square Af \sim f\% \square [f\check{S}f" fOfAfbfvf \square \square [fh, \grave{I}f \square \square [fJf<, \check{A}fzfXf$
 $g, \grave{I} \check{S} \check{O} \check{E} W, \delta \text{t}, \acute{E}, \mu, \frac{1}{2}, \grave{a}, \acute{I}, \check{A}, \cdot \square B \square \acute{U} \square \times, \acute{I}f \sim f\% \square [f\check{S}f" fOfAfbfvf \square \square [fh, \delta \check{Z}Q \square \check{A}, \mu, \check{A}, -$
 $, \frac{3}{4}, \frac{3}{4}, \Phi \square B$

$\check{Z}g, \Phi \bullet \hat{u}$

(1) $f \square \square [fJf<'a \square AfzfXfg'a, \check{A}, \grave{a}, \acute{E} \square Af \sim f\% \square [f\check{S}f" fO, \mu, \frac{1}{2}, \Phi ftfHf<f_ , \delta \bullet \check{Z}!, \mu, \ddot{U}, \cdot \square B$

(2) $fRf\}f" fhf \square f j f \dots \square [, \grave{I}f \sim f\% \square [f\check{S}f" fOf_fEf" f \square \square [fh, \delta \acute{I}, \check{N}, \ddot{U}, \cdot \square B$

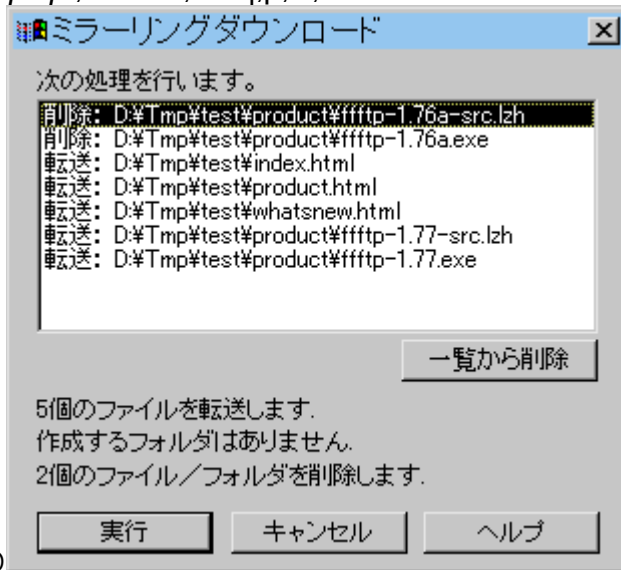
(3) $\check{S}m" fEfCf" fhfE, a \bullet \check{Z}!, \frac{3}{4}, \grave{e}, \ddot{U}, \cdot \square B$



$\square @ \square @$

(4) ^—“à—

e•\Ž!,Ö□i,p{f^f“,ð%Ÿ,,:Æ□Af~f%□[Šf“fO,Å□í□œ,:éftf@fCf<□AfAfbfvf□□[fh,
·,éftf@fCf<,îê——,ð•Ž!,μ,Ü,·□B



□@□@

□@□@□i□^,±,îfEfCf“fhfE,í□A‘â,«,³,ð•î!,é,±,Æ,^a,Å,«,,Ü,·□j


,±,îê——,©,ç□€—Ú,ðŽæ,è□œ,,Æ□AŽæ,è□œ,¢,½□^—□,í□s,¢,Ü,¹,ñ□B□í□œ,μ,½,-
,Ê,¢ftf@fCf<□AfEf“f□□[fh,μ,½,,Ê,¢ftf@fCf<,ªŠÜ,Ü,ê,Ä,¢,éŽž,ÉŽg—p,μ,Ü,·□B

ftf@fCf<,đŠJ,

ftf@fCf<^ê——,É•Ž!,³,ê,Ä,¢,éftf@fCf<-¼,đf_fuf<fNfŠfbfN,μ,½ŽŽ□A,Ü,½,Íf}
fEfX,Ì%oEf{f^f“f□fjf...□[,ĂŠJ,,đ!Ô,Æ□A,»,Ìftf@fCf<“à—e,đ•Ž!,·,é,±,Æ,^a,Ă,«,Ü,·□B

fzfXfg'¤,Ìftf@fCf<,đŠJ,Žž,Í□A,¢,Á,½,ñ□ì<Æ—
pftfHf<f_,Éftf@fCf<,đf_fEf“f□□[fh,μ□A,»,Ì“à—
e,đ•Ž!,μ,Ü,·□Bf_fEf“f□□[fh't,Í□AfXfe□[f^fXfEfCf“fhfE,É□ó<μ,đ•Ž!,μ,Ü,·□B




f_fEf“f□□[fh,^ax,¢Žž,Í□AŽó□M'+Ž~f{f^f“,đ%oŸ,μ,Ä'tŽ~,·,é,±,Æ,^a,Ă,«,Ü,·□B

ftf@fCf<íœ

íœ,·,éftf@fCf<,ð'l,ñ,ÅAíœf{f^f“,ð%Ÿ,μ,Ü,·B

íœ,íA•j”,ìftf@fCf<,ð'l,x,é,Ù,©AfTfu f fBfÆfNfgfŠ^È%°,l'S,Ä,ìftf@fCf<,ð,Ü,
Æ,ß,Äs,È,²,±,Æ,^a,Å,«,Ü,·B

ftf@fCf<-¼•ïX

-¼'O,ð•ïX,·,éftf@fCf<,ð'l,ñ,ÅA-¼'O•ïXf{f^f“,ð%Ÿ,μ,Ü,·B

-¼'O•ïX,ÍA•ï”,\ftf@fCf<,ð,Ü,Æ,ß,Äs,È,σ,±,Æ,a,Å,«,Ü,·B

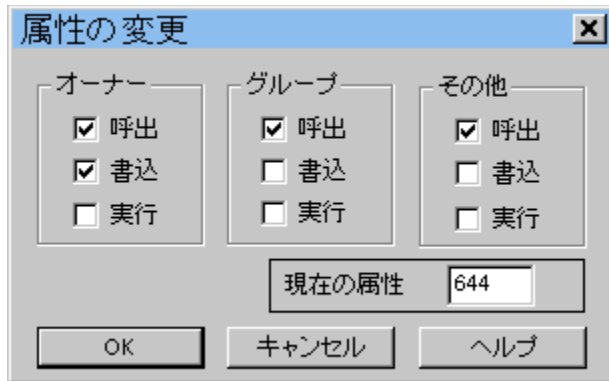
‘@◀◀•İX

‘@◀◀◻ifp◻[f~fbfVf‡f◻◻j,đ•İX,·,éftf@fCf<,đ‘l,ñ,Å◻A**fRf}**f“fhf◻fjf...
◻[,İ‘@◀◀•İX,đ‘l,Ñ,Ü,·◻B

‘@◀◀,İ•İX,Í "SITE CHMOD" fRf}f“fh,đŽg—p,μ,Ü,·◻BfzfXfg,^afTf|
◻[fg,·,é‘@◀◀•İXfRf}f“fh,^aá,ρŽŽ,Í◻AfzfXfg,İ“o~^◻◻,“x,Å◻AŽg—p,·,é‘@◀◀•İXfRf}
f“fh,đ◻Ý’è,μ,Ä,,¾,³,ç◻B
fzfXfg,É,æ,Á,Ä,ÍFTP,Ä,İ‘@◀◀•İX,đfTf|◻[fg,μ,Ä,ç,È,ç◻ê◻‡,^a,è,Ü,·◻B


FTP,Ä,İ‘@◀◀•İX,İfRf}f“fh,Í◻Aunix,İfVfFf<,ÅŽg—p,·,éfRf}
f“fh◻ichmod“™◻j,Æ“◻,¶,Ä,Í,è,Ü,¹,ñ◻B

‘@◀◀•İX,Í◻A•j◻”,İftf@fCf<,đ,Ü,Æ,ß,Ä◻s,È,ρ,±,Æ,^a,Ä,◀,Ü,·◻B



ŠÂ◀◀◻Ý’è,İ“—,R,Å◻Afa**f**bfbf◻◻[fh,·,éftf@fCf<,İ‘@◀◀,đ,ç,©,¶,ß◻Ý’è,μ,Ä,“,±
,Æ,à,Ä,◀,Ü,·◻B

ftfHf<f_□ì□¬

ftfHf<f_□ì□¬f{f^f“

fufbfNf}□[fN

f□□[fJf<'α□AfŠf,□[fg'α,ìftfHf<f_,ðfufbfNf}□[fN,É“o~^,Å,«,Ü,·□B

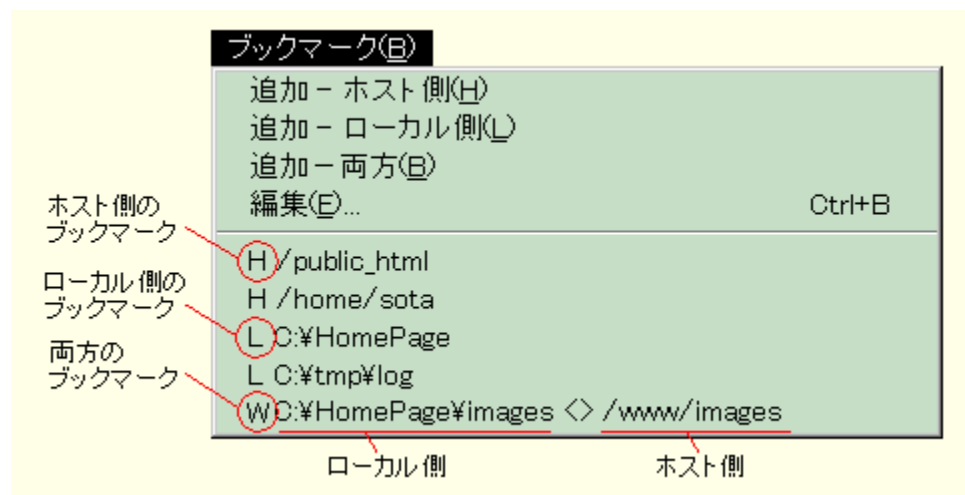
fufbfNf}□[fN,í□Ú'±,μ,Ä,¢,éfzfXfg-^,É□Ý'è,Å,«,Ü,·□B
□Ú'±,μ,Ä,¢,É,¢Žž,í□AfufbfNf}□[fN,ÍŽg,!,Ü,¹,ñ□B

□ifufbfNf}□[fN,É“o~^

fufbfNf}□[fNf□fjff...□[,ì'Ç%**Á**,ð'!,Ô,Æ□ACE>□Ý,ìftfHf<f_,^afufbfNf}
□[fN,É“o~^,³,ê,Ü,·□B

□ifufbfNf}□[fN,ðŽg,α

fufbfNf}□[fNf□fjff...□[,Å•Ž!,³,ê,éftfHf<f_,ð'!,Ô,Æ□A,»,ìftfHf<f_,É^Ú“@,μ,Ü,·□B



□ifufbfNf}□[fN,ð•Ò□W,·,é

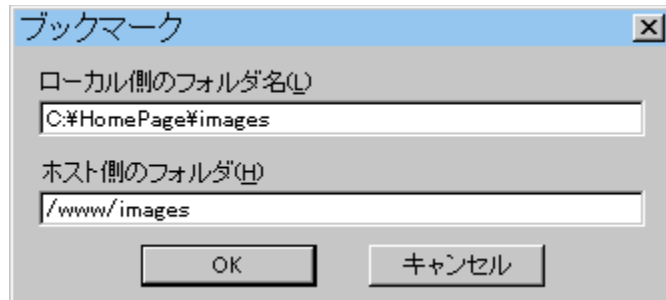
fufbfNf}□[fNf□fjff...□[,ì•**Ò**□**W**,ð'!,Ô,Æ□AfufbfNf}□[fN,ìê——
fEfCf“fhfE,^a•Ž!,³,ê,Ü,·□B



□i□^a,±,ìfEfCf“fhfE,í□A'â,«,³,ð•ì,!,é,±,Æ,^a,Å,«,Ü,·□j

,±,±,Å,Í□A“o~^,ì'Ç%Á□A□í□œ□A•ï□X□A•À,x•ï,!,ª,Å,«,Ü,·□B

'Ç%Á□A•ï□Xf{f^f“,ð%Ÿ,·,Æ□AZŸ,ìfEfCf“fhfE,ð•Ž!,μ,Ü,·□B



ftfHf<f_,Í□Af□□[fJf<'▯□AfzfXfg'▯,ì,Ç,¿,ç,©•Ð•û□A,Ü,½,Í—¼•û,ðŽw'è,μ,Ä,,¾,³,¢□B

ftf@fCf<,lŒŸ□ō

^ê——•\Žl,³,ê,Ä,¢,é't,©,ç□AŽw'è,lftf@fCf<,đŒŸ□ō,·,é,±,Æ,^aÅ,«,Ü,·□B

•**Ž!**f□fjf...□[,lŒŸ□ō,đ'l,Ñ□AŒŸ□ō,·,éftf@fCf<—¼,đ“ü—Í,μ,Ä,,¾,³,¢□B
ŽŸ,lftf@fCf<,đŒŸ□ō,·,é,Æ,«,Í□A•**Ž!**f□fjf...□[,l**ŽŸ,đŒŸ□ō**,đ'l,ñ,Å,,¾,³,¢□B

ftf@fCf<—¼,l'å•¶Žš□^□→•¶Žš,í,æ•Ê,³,ê,Ü,¹,ñ□B

□if□fCf<fhfJ□[fh,đŽg,Á,½ŒŸ□ō

ftf@fCf<—¼,É□AŽŸ,lf□fCf<fhfJ□[fh,đŠÜ,ß,é,±,Æ,^aÅ,«,Ü,·□B

* □c□c "C^Ó,l,O•¶Žš^È□ă,l•¶Žš—ñ,Éf}fbf`,μ,Ü,·□B
? □c□c "C^Ó,l,P•¶Žš,Éf}fbf`,μ,Ü,·□B

□i□³<K•lŒ»,đŽg,Á,½ŒŸ□ō

ŒŸ□ō•¶Žš—ñ,đ“ü—Í,·,é□Ū,É□A□³<**K•lŒ»**,Éf`fFfbfNf}□[fN,đ•t,¯,Ä,,¾,³,¢□B

ftf@fCf<—¼,É□AŽŸ,lf□f^fLffff%ofNf^,^aŽg—p,Å,«,Ü,·□B

[] □c□c fLffff%ofNf^fNf%ofX
() □c□c fpf^□[f“,đfOf<□[fv%o»,·,é
^ □c□c ftf@fCf<—¼,l□æ“^a
\$ □c□c ftf@fCf<—¼,l—”ö
· □c□c "C^Ó,l,P•¶Žš
* □c□c '¼'O,lfpf^□[f“,l,O%ñ^È□ă,lŒJ,è•Ô,μ
+ □c□c '¼'O,lfpf^□[f“,l,P%ñ^È□ă,lŒJ,è•Ô,μ
? □c□c '¼'O,lfpf^□[f“,^a,O%ñ□A,Ü,½,Í,P%ñŒ»,ê,é
| □c□c fpf^□[f“,l~—□~a□i,n,q□j

jre32.dll,^a•K—v,Å,·□B

ftf@fCf<,l'í'ð

^ê——•Ž!,,³,ê,Ä,¢,é'†,©,ç□A•i□",lftf@fCf<,ð,Ü,Æ,ß,Ä'l'ð,·,é,±,Æ,^a,Ä,«,Ü,·□B

□i***ftf@fCf<-¼,ðŽw'è,μ,Ä'l'ð***

•Ž!f□fjf...□[,l'í'ð,ð'l,ñ,Ä,,³/₄,³,¢□B

ftf@fCf<-¼,Æ,»,l'¼,l'í'ð□ðŒ□,ðŽw'è,μ,Ä,,³/₄,³,¢□B

ftf@fCf<-¼,lŽw'è•û-@,Í□Aftf@fCf<,lŒŸ□ð,Æ"—l,É□s,¢,Ü,·□B

□i***f□□[fJf<'¤,lftf@fCf<,ð'l,ÔŽž,l'í'ð□ðŒ□***

fzfXfg,l,Ü,¤,^a□V,μ,¢ftf@fCf<,Í□œŠO

*fzfXfg,É, ,é"—,¶-¼' O,lftf@fCf<,Æ"ú•t,ð"äŠr,μ□A fzfXfg,É, ,éftf@fCf<,l,Ü
 ,¤,^a□V,μ,¢□ê□‡,Í'l'ð,μ,Ü,¹,ñ□B*

fzfXfg,É"—,¶-¼' O,lftf@fCf<,^{a-3},¢ftf@fCf<,Í'l'ð,³,ê,Ü,·□B

fzfXfg,l,Ü,¤,^aŒÄ,¢ftf@fCf<,Í□œŠO

*fzfXfg,É, ,é"—,¶-¼' O,lftf@fCf<,Æ"ú•t,ð"äŠr,μ□A fzfXfg,É, ,éftf@fCf<,l,Ü
 ,¤,^aŒÄ,¢□ê□‡,Í'l'ð,μ,Ü,¹,ñ□B*

fzfXfg,É"—,¶-¼' O,lftf@fCf<,^{a-3},¢ftf@fCf<,Í'l'ð,³,ê,Ü,·□B

fzfXfg,ÉŠù,É, ,éftf@fCf<,Í□œŠO

fzfXfg,É"—,¶-¼' O,lftf@fCf<,^a ,éŽž,Í'l'ð,μ,Ü,¹,ñ□B

□i***fzfXfg'¤,lftf@fCf<,ð'l,ÔŽž,l'í'ð□ðŒ□***

f□□[fJf<,l,Ü,¤,^a□V,μ,¢ftf@fCf<,Í□œŠO

f□□[fJf<,É, ,é"—,¶-¼' O,lftf@fCf<,Æ"ú•t,ð"äŠr,μ□A f□□[fJf<,É, ,éftf@fCf<,l,Ü,¤,^a□V,μ,¢□ê□‡,Í'l'ð,μ,Ü,¹,ñ□B

f□□[fJf<,É"—,¶-¼' O,lftf@fCf<,^{a-3},¢ftf@fCf<,Í'l'ð,³,ê,Ü,·□B

f□□[fJf<,l,Ü,¤,^aŒÄ,¢ftf@fCf<,Í□œŠO

f□□[fJf<,É, ,é"—,¶-¼' O,lftf@fCf<,Æ"ú•t,ð"äŠr,μ□A f□□[fJf<,É, ,éftf@fCf<,l,Ü,¤,^aŒÄ,¢□ê□‡,Í'l'ð,μ,Ü,¹,ñ□B

f□□[fJf<,É"—,¶-¼' O,lftf@fCf<,^{a-3},¢ftf@fCf<,Í'l'ð,³,ê,Ü,·□B

f□□[fJf<,ÉŠù,É, ,éftf@fCf<,Í□œŠO

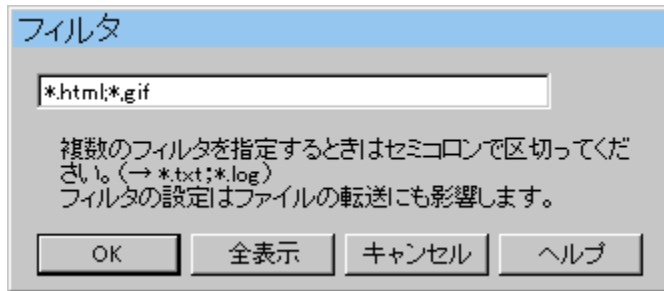
f□□[fJf<,É"—,¶-¼' O,lftf@fCf<,^a ,éŽž,Í'l'ð,μ,Ü,¹,ñ□B

□i‘S,Ä,ìftf@fCfç,ð‘l‘ð

•Ž!f□fj)f...□[,ì‘S‘l‘ð□^%ð□œ,ð‘l,ñ,Å,,³/₄,³,¢□B

ftfBf<f^

ftfBf<f^,ðŽg,±,Æ□A•Ž!,,éftf@fCf<,ðÆÀ'è',,é,±,Æ,a,Ä,«,Ü,·□B



ftfBf<f^,Íf□fCf<fhfJ□[fh,ðŽg,±,Æ,a,Ä,«,Ü,·□B

•;□",ìftfBf<f^,ðŽg—p,·,é,Æ,«,Í ; (fZf~fRf□f"□j,Åæ□Ø,Á,Ä□',«,Ü,·□B

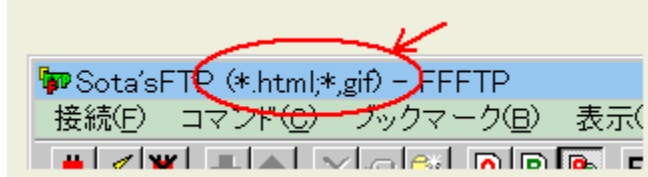
—á□j

*.html □" Šg'£Žq,a .html ,ìftf@fCf<,ì,Ý•Ž!,μ,Ü,·□B

.html;x □" Šg'£Žq,a .html ,ìftf@fCf<,Æ□Aftf@fCf<—¼,a x
,ÄŽn,Ü,éftf@fCf<,ì,Ý•Ž!,μ,Ü,·□B

'S•Ž!f{f^f",ð%Ÿ,·,Æ□A'S,Ä,ìftf@fCf<,ð•Ž!,,é□Ý'è,É—ß,è,Ü,·□B

ftfBf<f^,ì□Ý'è,í□AFFFFTP,ìf^fCf<gfgfo□[,É•Ž!,μ,Ü,·□B



ftfBf<f^,ì□Ý'è,í□j—,·,éftf@fCf<,É,à%œ<ç,μ,Ü,·□B

fTfuftfHf<f_,ðŠÜ,ß,Ä"j—,·,é□ê□±□AftfuftfHf<f_,ì't,É a.html ,Æ b.gif

,ì,Q,Ä,ìftf@fCf<,a ,é,Æ,«□AftfBf<f^,a *.html ,ÆŽw'è,³,ê,Ä,¢,é,Æ,«,Í a.html ,¾,—,a"j—
,³,ê,Ü,·□B

ftfBf<f^,ì□Ý'è,í□Ů"μ,Ü,¹,ñ□B

ftfHf<f_“Žž^Ú“®

f□□[fJf<‘□□AfzfXfg‘□,l—¼•û,É““,Ų—¼‘O,ìftfHf<f_,a,,éŽž□A—
¼•û,ìftfHf<f_,l^U“®,đ“Žž,É□s,¢,Ü,•□B

%°,l%œ—Ê,ì□A ,ĂŽl,³,ê,é•”•a□iftfHf<f_—
¼,lf_fuf<fNfŠfbfN□A,Ü,½,íê,Â□ă,ìftfHf<f_,Ö,ìÚ“®□j,ĂftfHf<f_~Ú“®,đ,.,éŽž,É“®□ì
,μ,Ü,•□B

✗,ĂŽl,³,ê,é•”•a,Ă,í“®□ì,μ,Ü,¹,ñ□B



"C^Ó,lfRf}f"fh

□œ□u"C^Ó,lfRf}f"fh□v,ÅŽg,!,éRf}f"fh

DELE RMD MKD PWD RNFR
RNT0 SITE ALLO STAT SYST
HELP NOOP

□œ□u"C^Ó,lfRf}f"fh□vŽg,!,È,¢Rf}f"fh□^Žg,í,È,¢,Ù,α,^a,æ,¢Rf}f"fh

USER PASS ACCT CWD CDUP
SMNT REIN QUIT PORT PASV
TYPE STRU MODE RETR STOR
STOU APPE REST ABOR LIST
NLST

fRf}f“fhf%oCf“

fRf}f“fhf%oCf“,ÉfzfXfg-¼,âftf@fCf<-
¼,ðŽw'è,μ,Ä□AFFFTP<N“®Œã¼,č,ÉfzfXfg,Ö,ì□Ú'±□Aftf@fCf<,ìf_fEf“f□□[fh,ð□s,
α,±,Æ,ª,Â,«,Ü,·□B

□œ“o~^,μ,Ä, ,éfzfXfg,ì□Ý'è-¼,ðŽw'è,·,é•û-@

□Ú'±,·,éfzfXfg,ªfzfXfgê——,É“o~^,μ,Ä, ,éŽž,í□A,»,ì-¼'O,ðŽw'è,μ,Ä□Ú'±,Â,«,Ü,·□B
,Ü,½□A□Ú'±Œã,Éf~f%□[fŠf“fOfAfbfvf□□[fh,ðŠJŽn,·,é,±,Æ,ª,Â,«,Ü,·□B

ŽŸ,ì□Ž®,ÂŽw'è,μ,Ä,,¾,¾,¢□B[],Â^í,Ü,ê,½•”•ª,í□È—ª%Â”\,Â,·□B

-s □Ý'è-¼ [[-m | -d] [-f] [-q]]

ŽŸ, ÌfIfvfVf±f“,ªŽw'è,Â,«,Ü,·□B

-s ,Ü,½,í --set □□ □Ú'±,·,éfzfXfg,ì□Ý'è-¼,ðŽw'è,·,é
-m ,Ü,½,í --mirror □□ □Ú'±Œãf~f%□[fŠf“fOfAfbfvf□□[fh,ð□s,α
-d ,Ü,½,í --mirrordown □□ □Ú'±Œãf~f%□[fŠf“fOf_fEf“f□□[fh,ð□s,α
-f ,Ü,½,í --force □□ f~f%□[fŠf“fOŠJŽn,ìSm”F,ð,μ,È,¢
-q ,Ü,½,í --quit □□ f~f%□[fŠf“fO□I—¹Œã□AFFFTP,ð•Â,¶,é

Žg—p—á

□i□Ý'è□İ,Ý,ìfzfXfg“My Home Page”,É□Ú'±
,μ□Af~f%□[fŠf“fOfAfbfvf□□[fh,ðŠJŽn,·,é□B
-s,Æ□Ý'è-¼,ìŠÔ,É,í<ó”,ª•K—v,Â,·□B

-s “My Home Page” -m

□œfzfXfg-¼□AURL,ðŽw'è,·,é•û-@

□Ú'±,·,éfzfXfg-¼□AURL,È,Ç,ðŽw'è,μ,Ä□Ú'±,Â,«,Ü,·□B

ŽŸ,ì□Ž®,ÂŽw'è,μ,Ä,,¾,¾,¢□B[],Â^í,Ü,ê,½•”•ª,í□È—ª%Â”\,Â,·□B

[ftp://[[userID][:password]@]hostname[:][port#][filename]

ŽŸ,ìfIfvfVf±f“,ªŽw'è,Â,«,Ü,·□B

-e ,Ü,½,í --euc □□ fzfXfg,ìŠčŽšfR□[fh,íEUC
-j ,Ü,½,í --jis □□ fzfXfg,ìŠčŽšfR□[fh,íJIS
-k ,Ü,½,í --kana □□ ”¼ŠpfJfi,ð’SŠp,É•íŠ,·μ,È,¢
-u ,Ü,½,í --eucname □□ fzfXfg,ìftf@fCf<-¼,ìŠčŽšfR□[fh,íEUC
-i ,Ü,½,í --jisname □□ fzfXfg,ìftf@fCf<-¼,ìŠčŽšfR□[fh,íJIS
-a ,Ü,½,í --ascii □□ fAfXfL□[f,□[fh,Â”]—

-b ,Ü,½,Í --binary □□ fofCfifŠf,□[fh,Å"]'—
 -x ,Ü,½,Í --auto □□ ftf@fCf<-¼,ÅfAfXfL□[□^fofCfifŠf,□[fh,ð□Ø'Ö,!,Ä"]'—
 -q ,Ü,½,Í --quit □□ ftf@fCf<"]'—□|—¹Œã□AFFFTP,ð•Å,¶,é

Žg—p—á

□i fzfXfg"host.co.jp",lf|□[fg69,É□Af†□[fU—
 ¼"sota"□AfpfXf□□[fh"password",Åf□fOfCf“,μ□A"/pub/
 readme.txt",ðf_fEf“f□□[fh,·,é□B

<ftp://sota:password@host.co.jp:69/pub/readme.txt>

□i□Å□%,l"ftp://",â□AfzfXfg—¼,lŒã,è,l":",Í-³,,Ä,à—Ç,¢□B

<sota:password@host.co.jp/pub/readme.txt>

□i fzfXfg"host.co.jp",É□Af†□[fU—¼"sota",Åf□fOfCf“,μ□A"/pub/
 readme.txt",ðf_fEf“f□□[fh,·,é□B□ifpfXf□□[fh,ª•K—v,È,çŒã,Å•,¢,Ä,«,Ü,·□j

<ftp://sota@host.co.jp/pub/readme.txt>

□i fzfXfg"host.co.jp",É□Aanonymous,Åf□fOfCf“,μ□A"/pub/
 readme.txt",ðf_fEf“f□□[fh,·,é□B

<ftp://host.co.jp/pub/readme.txt>

□i fzfXfg"host.co.jp",É□Aanonymous,Åf□fOfCf“,μ□A"/
 pub",ÉffBfŒfNfgfŠ,ð^Ú“®,·,é□B

<ftp://host.co.jp/pub/>

□i fzfXfg"host.co.jp",É□Aanonymous,Åf□fOfCf“,·,é□B

<host.co.jp>

□œ»,l'¼,lflfvfVf‡f“

-h ,Ü,½,Í --help □□ ,±,ì%œ—Ê,ð•Ž!,·,é

--saveoff □□ □iŒã□A□Ý'è,ð•ï□X,μ,Ä,à•Ů'¶,μ,È,¢,æ,ª,É,·,é
 □i-~%ñ --saveoff ,ðŽw'è,·,é•K—v,Í, ,è,Ü,¹,ñ□j

--saveon □□ --saveoff ,ð%ð□œ,·,é

-n ,Ü,½,Í --ini □□ -n,ì, ,Æ,ÉŽw'è,μ,½lNlftf@fCf<,l□Ý'è,Å<N“®,·,é

(Žw'è,μ,È,¢□ê□‡,Í□AFFFTP.exe,Æ““,¶ftfHf<f_,lFFFTP.ini,ðŽg—p)

INIftf@fCf<,Í•K,ₛftf<fpfX,ÅŽw'è,μ,Ä,,¾,³,¢□B
-n,ÆINIftf@fCf<-¼,ìŠÔ,É,Í<ó'",ª•K—v,Å,·□B
(Žg—p—á□F-n "c:\tool\ffftp-set2.ini")

fCf“f|□[fg

WS_FTP,ì□Ý'èftf@fCf<(WS_FTP.INI□j,©,ç□AfzfXfg,ì□Ý'è,ðfCf“f|□[fg,Å,«,Ü,·□B

□Ú'±f□fjf...□[,ì**fCf“f|□[fg**□|**WS_FTP**,ð'ì,Ñ,Ü,·□Bftf@fCf<,ì'ð‰æ—
Ê,Å□AWS_FTP.INI,ð'ì,Ñ,Ü,·□B

anonymous-FTP^ÈŠO,ìfpfXf□□[fh,ÍfCf“f|□[fg,μ,Ü,¹,ñ□BfCf“f|
□[fg,μ,¹/₂ÆãfpfXf□□[fh,ð□Ý'è,μ,Ä,,³/₄,³,¢□Banonymous-
FTP,ì□ê□‡,Íf□□[f<fAfhfÆfX,ðfpfXf□□[fh,Æ,μ,ÄŽg—p,μ,Ü,·□B

WS_FTP.INIftf@fCf<,í□A^È‰°,ì,æ,²,È“à—e,Å,·□B

[Host Name]

HOST=xxx.yyy.com

UID=sota

LOCDIR=c:\download

DIR=/pub

PASVMODE=1

FIREWALL=1

□i'ł,Í 0 ,Ü,¹/₂,Í 1□j

□i'ł,Í 0 ,Ü,¹/₂,Í 1□j

[Host Name 2]

HOST=xxx.yyy.zzz.com

□@□@□F

□@□@□F

□™ **WS_FTP**,Í Ipswitch, Inc. ,ìFTPfNf‰fCfAf“fgf\ftfg,Å,·□B

fzfXfg,l“o~^

fzfXfg^ê——

Ši—{

Šg'£

•¶ŽšfR□[fh

f_fCfAf<fAfbfv

□,“x

*fzfXfg*ê——

fzfXfg,ì□Ý'è□A•À,×'Ö,!,È,Ç,ð□s,Φ,Ü,·□B



□i□^a,±,ì*fEfCf*“*fhfE*,Í□A'â,«,³,ð•ì,!,é,±,Æ,^a,Â,«,Ü,·□j

□i□Ú'±

'l,ñ,³/₄*fzfXfg*,Ö□Ú'±,μ,Ü,·□B

fOf<□[*fv*—¹/₄,ð'l,ñ,Â,Φ,é,Æ,«,Í□A□Ú'±,Í,Â,«,Ü,¹,ñ□B

□i□V<*KfzfXfg*

□V,μ,Φ*fzfXfg*,ð'Ç%Á,μ,Ü,·□B

fzfXfg,Ö□Ú'±'†,Í□A□V<*KfzfXfg*,ì'Ç%Á,Í,Â,«,Ü,¹,ñ□B

□i□V<*KfOf*<□[*fv*

□V,μ,Φ*fOf*<□[*fv*,ð'Ç%Á,μ,Ü,·□B

fzfXfg,Ö□Ú'±'†,Í□A□V<*KfOf*<□[*fv*,ì'Ç%Á,Í,Â,«,Ü,¹,ñ□B

□i□Ý'è•ì□X

fzfXfg,ì□Ý'è,ð•ì□X,μ,Ü,·□B

fOf<□[*fv*—¹/₄,ð'l,ñ,Â,Φ,é,Æ,«,Í□A*fOf*<□[*fv*—¹/₄,ð•ì□X,μ,Ü,·□B

□i*fRfs*□[

fzfXfg,ì□Ý'è,ð*fRfs*□[,μ,Ü,·□B

fOf<□[*fv*—¹/₄,ð'l,ñ,Â,Φ,é,Æ,«,Í□A*fzfXfg*,Ö□Ú'±'†,Í*fRfs*□[,Í,Â,«,Ü,¹,ñ□B

□i□í□œ

fzfXfg,ì□Ý'è,ð□í□œ,μ,Ü,·□B

fOf<□[*fv*—¹/₄,ð'l,ñ,Â,Φ,é,Æ,«,Í□A,»,ì*fOf*<□[*fv*“à,É, ,é'S,Ä,ì*fzfXfg*,ì□Ý'è,ð□í□œ,μ,Ü,·□B

fzfXfg,Ö□Ú'±'†,Í□A□í□œ,Í,Â,«,Ü,¹,ñ□B

□i□^a□@□«

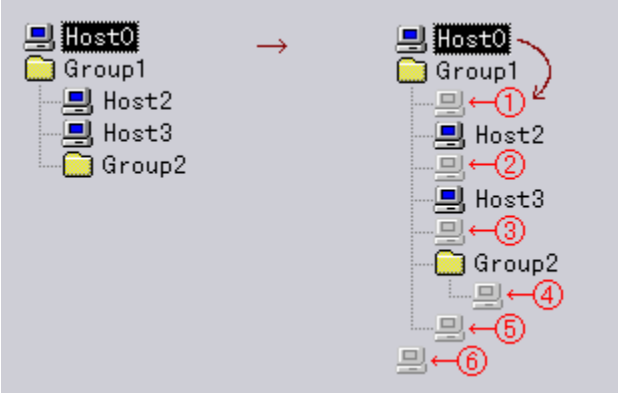
fzfXfg—¹/₄□A*fOf*<□[*fv*—¹/₄,ð•À,×'Ö,!,Ü,·□B

fOf<□[*fv*,ð^Ú“®,·,é,Æ,«,Í□A*fOf*<□[*fv*“à,ì'S,Ä,ì*fzfXfg*,à, ,í,¹,Ä^Ú“®,μ,Ü,·□B

fzfXfg,Í*fOf*<□[*fv*,ð,Ü,¹/₂,Φ,Ä^Ú“®,Â,«,Ü,·□B

fzfXfg,ì□Ý'è,^a□¶,ì□},ì,æ,π,È,Æ,«□AHost0,ð'l,ñ,Â□«,ð%Ÿ,·,Æ□A%œ,ì□}

,l”Ô□†,l^Ê'u,É□‡ŽŸ^Ú“®,μ,Ü,·□B□^a,Â†□‡,É^Ú“®,μ,Ü,·□B



fzfXfg,ÖÜ±†,ÍA•À,x‘Ö,Í,Á,«,Ü¹,ñB

Šî-{

□Ú±f□fj...□[ìfzfXfg□Ý'è,ÅfzfXfg^ê——
fEfCf“fhfE,ð•Ž!,μ□A□V◁K“o~^f{f^f“,ð%Ÿ,μ,Ä%Ÿ,.,Æ□Ý'èfEfCf“fhfE,ð•Ž!,μ,Ü,·□
B
±,±,Å□A fzfXfg,ì□Ý'è,ð□s,È,¢,Ü,·□B

ホストの設定

基本 | 拡張 | 文字コード | ダイアルアップ | 高度

ホストの設定名(N) ホスト名(アドレス)(N)
Biglobe ftp.biglobe.ne.jp

ユーザ名(U) パスワード/フレーズ(P)
anonymous ***** ☒ anonymous

ローカルの初期フォルダ(L) ...
D:\Tmp

ホストの初期フォルダ(R) 現在のフォルダ
/pub

☐ 最後にアクセスしたフォルダを次の初期フォルダとする(E)

OK キャンセル ヘルプ

□if^fCf<

fzfXfg^ê——%æ—Ê,É•Ž!,.,éf^fCf<,ð“ü—Í,μ,Ü,·□B

□ifzfXfg-¼□ifAfhfÆfX□j

fzfXfg-¼□ifAfhfÆfX□j,ð“ü—Í,μ,Ü,·□B

□if†□[fU-¼

f□fOfCf“f†□[fU-¼,ð“ü—
Í,μ,Ü,·□BAnonymous,Åf□fOfCf“,.,é,Æ,«,Í□Aanonymousf{fbfNfX,ðfNfŠfbfN,.,é,Æ
□Af†□[fU-¼,ÆfpfXf□□[fh,afZfbfg,³ê,Ü,·□BfpfXf□□[fh,afZfbfg,³ê,È,¢
,Æ,«,Í□Af†□[fU□Ý'è,Åf†□[fU,ìf□□[f<fAfhfÆfX,ð□Ý'è,μ,Ä,³¢□B

f†□[fU-¼,ð“ü—Í,μ,È,¢,Å,.,Æ□A□Ú±Žž,Éf†□[fU-¼,ð,½,.,È,Ü,·□B

□ifpfXf□□[fh/fpfXftfÆ□[fY

fpfXf□□[fh□i,Ü,½,ÍfpfXftfÆ□[fY□j,ð“ü—Í,μ,Ü,·□BfpfXf□□[fh,Í*,Å•Ž!,³ê,Ü,·□B
fpfXf□□[fh,ð“ü—Í,μ,È,¢,Å,.,Æ□A□Ú±Žž,ÉfpfXf□□[fh,ð,½,.,È,Ü,·□B

◁ó, ðf p f X f □ □ [f h, ð f z f X f g, É‘ —, è, ½, ¢ Žž, Í □ A f X f y □ [f X, ð, P • ¶ Žš, ¾, “ü — Í, μ, Ä, “, ¢, Ä, -
, ¾, ³, ¢ □ B

□ i f □ □ [f J f ◁, ð □ % Šú f t f H f ◁ f _

f □ f O f C f “ Žž, ð f □ □ [f J f ◁ ‘ ◻, ð f t f H f ◁ f _ , ð “ ü — Í, μ, Ü, · □ B

□ i f z f X f g, ð □ % Šú f t f H f ◁ f _

f □ f O f C f “ Žž, ð f z f X f g ‘ ◻, ð f t f H f ◁ f _ , ð “ ü — Í, μ, Ü, · □ B

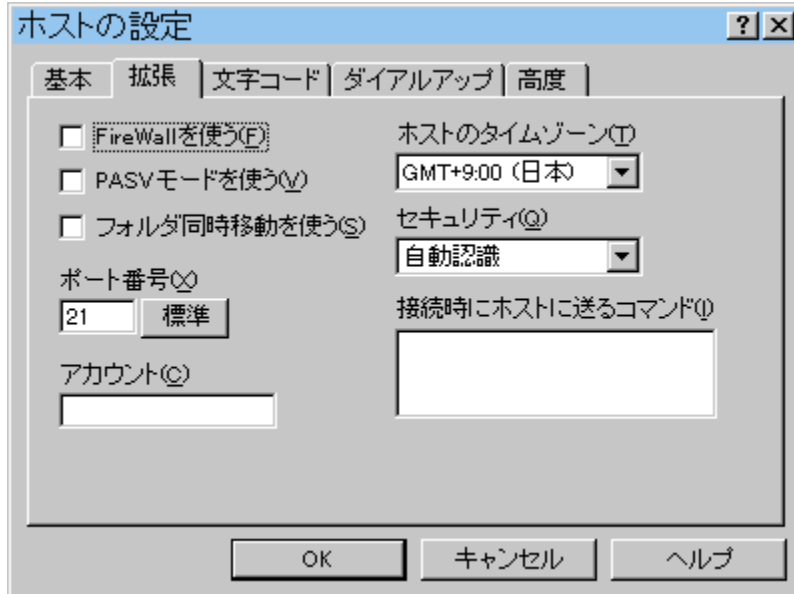
□ i Ą » □ Ý, ð f t f H f ◁ f _

f z f X f g, É □ Ú ‘ ±, μ, Ä, ¢, é, Æ, « □ A Ą » □ Ý, ð f t f H f ◁ f _ , ð f □ f O f C f “ Žž, ð f t f H f ◁ f _ , É □ Ý ‘ è, μ, Ü, · □ B

□ i □ Å Ą ã, É f A f N f Z f X, μ, ½ f t f H f ◁ f _ , ð □ % Šú f t f H f ◁ f _ , Æ, ·, é

ˆ È ‘ O, É f z f X f g, É □ Ú ‘ ±
, μ, ½ Žž, É □ Å Ą ã, É f A f N f Z f X, μ, ½ f t f H f ◁ f _ , ð □ % Šú f t f H f ◁ f _ , É, μ, Ü, · □ B

Šg'£



☐FireWall,ðŽg,¤

fzfXfg,Ö,ì□Ú'±,ÉFireWall,ðŽg,¢,Ü,·□B

☐PASVf,□[fh,ðŽg,¤

ftf@fCf<"]'—,ðPASVf,□[fh,Å□s,¢,Ü,·□B
'Ê□IPASVf,□[fh,ÍŽg—p,µ,Ü,¹ñ,^a□A"]'—,^a,µ,¢,©,È,¢,Æ,«,ÉŽg—p,µ,Ä,Ý,Ä,,³/₄,³,¢□B

☐iftfHf<f_“~ŽŽ^Ú“(®),ðŽg,¤

ftfHf<f_“~ŽŽ^Ú“(®,ð□s,¤,©,Ç,¤,©,ì□%Šú□ó'Ô,ð□Ý'è,µ,Ü,·□B
fzfXfg,Ê□Ú'±Êã,Í□A**fRf}**f“**fhf**□fjf...
□[,^a**fc**□[**f**□**fo**□[,Å^êŽŽ“l,É□Ý'è,ð•ī□X,Å,«,Ü,·□B

☐if|□[fg”Ô□†

fzfXfg,ìf|□[fg”Ô□†,ð□Ý'è,µ,Ü,·□B•W□€,Í21,Å,·□B

☐ifAfJfEf“fg

f□fOfCf“,·,é,ì,ÉfAfJfEf“fg,^a•K—v,ÈŽŽ,É□AfAfJfEf“fg,ð“ü—Í,µ,Ä,,³/₄,³,¢□B
;,;,©,¹/₂,ìfzfXfg,Å,Í•K—v,·,è,Ü,¹ñ□B

☐ifzfXfg,ìf^fCf€f]□[f“

fzfXfg,^a□Aftf@fCf<,l“ú•t□^ŽŽŠÔ,ð□A,Ç,ìf^fCf€f]□[f“,Å□o—Í,·,é,©,ð□Ý'è,µ,Ü,·□B,±

,ê,É,æ,è□Aftf@fCf<,l"ú•t,đ"ú-{ŽžŠÔ,Â•Žl,.,é,±,Æ,^aÂ,«,Ü,·□B

fzfXfg,^aftf@fCf<,l"ú•t□^ŽžŠÔ,đ"ú-{ŽžŠÔ,Â□o—Í,.,éŽž,Í GMT+9:00("ú-{}
,É□Y'è,μ,Ü,·□B,Ü,½□AfOfŠfjfbfW•W□€ŽžŠÔ,ìžž,Í GMT ,É□Y'è,μ,Ü,·□B

"ú•t,đ"ú-{ŽžŠÔ,É•iš,·,μ,½,,È,¢Žž,Í□AGMT+9:00("ú-{} ,É□Y'è,μ,Ä,,¾,³,¢□B

□ifZfLf...fŠfefB

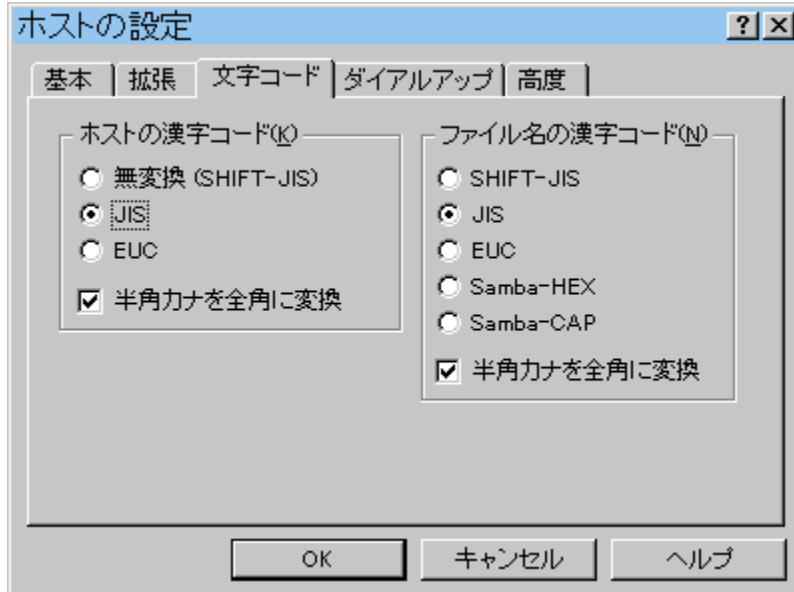
f□f"f^fCf€fpfXf□□[fh,ì□Y'è,đ,μ,Ü,·□B'Ê□í,ÍŽ©"@FŽ⁻,É□Y'è,μ,Ä,,¾,³,¢□B
f□f"f^fCf€fpfXf□□[fh,ì€`Ž®,đFFFTP,^aŠÔ^á,Á,Ä"FŽ⁻,μ,Ä,¢,é,ÆŽv,í,ê,éŽž,Í□AŽg—
p,μ,Ä,¢,é€`Ž®,đ□Y'è,μ,Ä,,¾,³,¢□BMD4(S/KEY)□AMD5, SHA-1,ì,¢,,é,©,đ'l,Ô,±
,Æ,^aÂ,«,Ü,·□B

f□f"f^fCf€fpfXf□□[fh,ÍfzfXfg,^aî%ž,μ,Ä,¢,È,¢,ÆŽg—p,Â,«,Ü,¹,ñ□B

□i□Ú'±Žž,ÉfzfXfg,É'—,éfRf}f"f^h

fzfXfg,Ö,ì□Ú'±,^aŠ®—¹,μ,½'¼€ã,É'—,éfRf}f"f^h,đŽw'è,μ,Ü,·□B
'Ê□í,Í%½,àŽw'è,·,é•K—v,Í, ,è,Ü,¹,ñ□B

• 設定



設定

fzfXfg'α, ŠŽšfR[fh, ðŸ'è, μ, Ü, ·B
 f[fJf'α, ŠŽšfR[fh, Í SHIFT-JIS fR[fh, Å, ·B
 fAfXfL[f, [fh, Åftf@fCf<, ð"]'—, ·, é, Æ, « ÅŠŽšfR[fh, ð•İŠ, μ, Ä"]'—, μ, Ü, ·B
 fofCfifŠf, [fh, Åftf@fCf<, ð"]'—, ·, é, Æ, «, Í ÅŠŽšfR[fh, İ•İŠ, Ís, ¢, Ü, ¹, ñB

JISfR[fh, İÚ×, ÍJISŠŽšfR[fh, É, Â, ¢, Ä, ðŸ©, Ä, ¾, ³, ¢B

設定

fzfXfg, ŠŽšfR[fh, EUC ÅJIS, İê±, É Å¼ŠpfJfi, ð'SŠp, É•İŠ, μ, Ü, ·B
 EUC ÅJIS ÊŠÖ, İŽž, Í Å¼ŠpfJfi, İ, Ü, Ü, É, È, è, Ü, ·B

JISfR[fh, İÚ×, ÍJISŠŽšfR[fh, É, Â, ¢, Ä, ðŸ©, Ä, ¾, ³, ¢B

設定

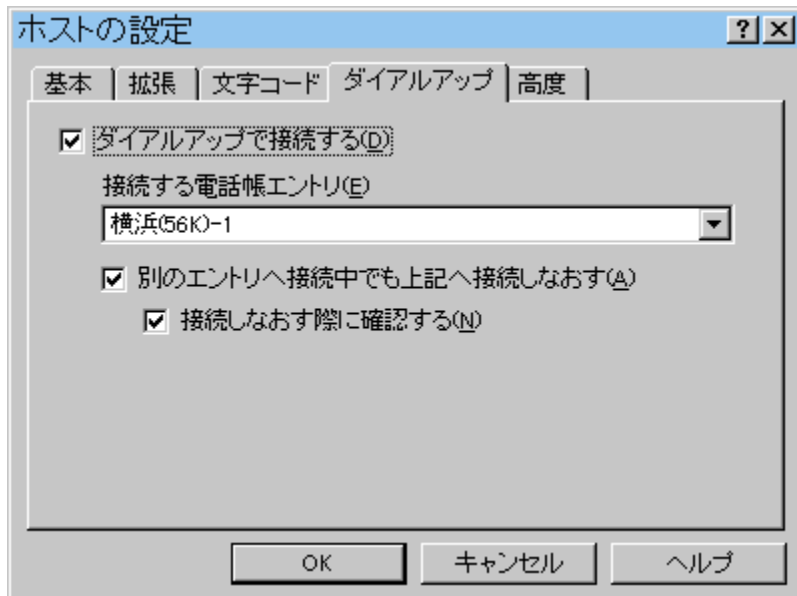
fzfXfg'α, İftf@fCf<-¼, ŠŽšfR[fh, ðŸ'è, μ, Ü, ·B
 Ü, μ, Í ÅŠŽš, İftf@fCf<-¼, É, Â, ¢, Ä, ðŸ©, Ä, ¾, ³, ¢B

設定

fzfXfg, İftf@fCf<-¼, ŠŽšfR[fh, EUC ÅJIS
 , İê±, É Å¼ŠpfJfi, ð'SŠp, É•İŠ, μ, Ü, ·B
 EUC ÅJIS ÊŠÖ, İŽž, Í Å¼ŠpfJfi, İ, Ü, Ü, É, È, è, Ü, ·B

JISfR□[fh,ì□Ú□×,ÍJISŠčŽšfR□[fh,É,Â,¢,Ä,ðŒ©,Ä,,¾,³,¢□B

f_fCfAf<fAfbfv



□i_fCfAf<fAfbfv,Å□Ú'±,·,é

fzfXfg,Ö□Ú'±,·,é'O,Éf_fCfAf<fAfbfv□Ú'±,ð,μ,Ü,·□B
□Ú'±,·,é“d~b' fGf“fgfŠ,ðŽw'è,μ,Ä,,¾,¾,¢□B

□i□Ú'±,·,é“d~b' fGf“fgfŠ

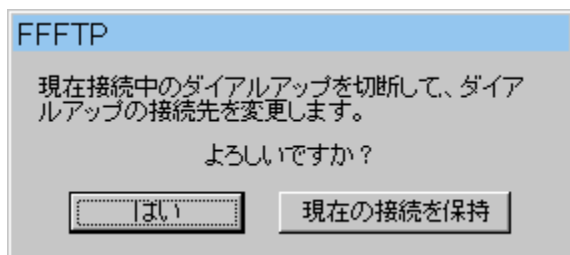
f_fCfAf<fAfbfv,ì□Ú'±□æ,ðŽw'è,μ,Ü,·□B

□i•Ê,ìfGf“fgfŠ,Ö□Ú'±'†,Å,à□ã•L,Ö□Ú'±,μ,È,“,·

'¼,ìf_fCfAf<fAfbfv□æ,Ö□Ú'±,μ,Ä,¢,é□ê□‡,É□A,»,ì□Ú'±,ð□Ø,Á,Ä□A□Ú'±,·,é“d~b' f
Gf“fgfŠ,ÅŽw'è,μ,½□æ,Ö□Ú'±,μ,È,“,·,μ,Ü,·□B

□i□Ú'±,μ,È,“,·□Û,ÉŠm”F,·,é

f_fCfAf<fAfbfv,ð□Ú'±,μ,È,“,·Žž,É□AŠm”F,ð□s,¢,Ü,·□B

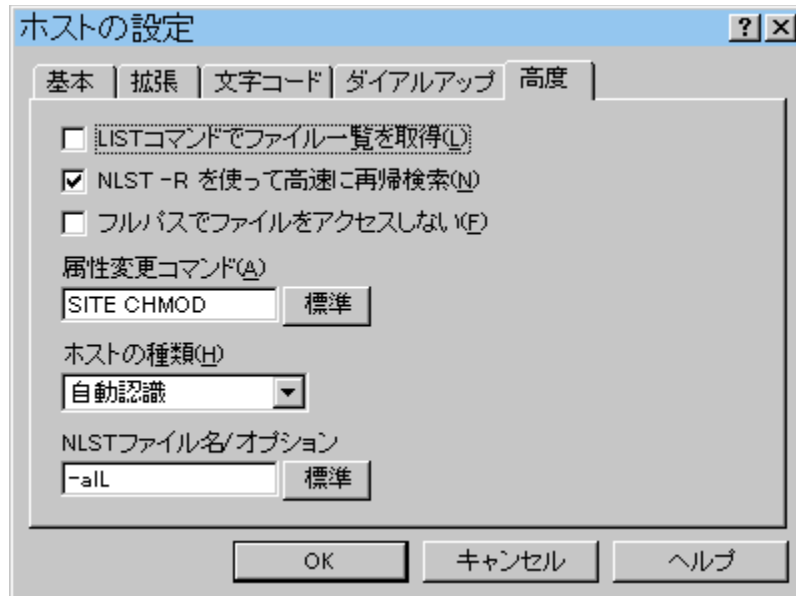


œ»□Ý,ì□Ú'±,ð□Ø,è,½,,È,¢□ê□‡,í□AŠm”FfEfCf“fhfE,Åœ»□Ý,ì□Ú'±

,đ•ŮŽ□f{f^f“,đ%Ÿ,μ,Ä,,¾,³,¢□B

□,“x

fzfXfg,Ö,ì□Ú'±□Aftf@fCf<^ê——□AfAfbfvf□□[fh□Af_fEf“f□□[fh,È,Ç,É—
â'è,ªN,«,½Žž,É,Ì,Ý□Y'è,ð•ì□X,μ,Ä,,¾,³,¢□B



□iLISTfRf}f“fh,Åftf@fCf<^ê——,ðŽæ“¾

fzfXfg,ìftf@fCf<^ê——,ðŽæ“¾,·,é,Æ,«□A"LIST"fRf}f“fh,ðŽg—p,μ,Ü,·□B
'É□í,í "NLST -all" fRf}f“fh,ðŽg—p,μ,Ä,¢,Ü,·□B

□iNLST -R ,ðŽg,Á,Ä□,‘¬,É□Ä<AÆY□ð

fTfuftfHf<f_ ,ðŠÜ,pftf@fCf<,ìf_fEf“f□□[fh,âf~f%□[fŠf“fOfAfbfvf□□[fh,ð□s,ª
Žž,É□A"NLST -allR" fRf}f“fh,ðŽg,Á,Ä□Aftf@fCf<^ê——,ð□,‘¬,ÉŽæ“¾,μ,Ü,·□B
fTfuftfHf<f_ ,ðŠÜ,pftf@fCf<,ìf_fEf“f□□[fh,âf~f%□[fŠf“fOfAfbfvf□□[fh,ª,ª,Ü,-
,¢,©,È,¢Žž,í□A,±,ì□€—Ú,ìf`fFfbfNf}□[fN,ðŠO,μ,Ä,Ý,Ä,,¾,³,¢□B

□iftf<fpfX,Åftf@fCf<,ðfAfNfZfX,μ,È,¢

ftf<fpfX,í /home/sota/public_html/index.html ,ì,æ,ª,É□AftfHf<f_—¼□{ftf@fCf<—
¼,ì€`Ž®,Á,·□B,±,ì€`Ž®,Á,íftf@fCf<—¼,Æ□A,»,ìftf@fCf<,ì, ,é□ê□Š,ð^è“x,ÉŽw`è,Á,«,
Ü,·,ª□A fzfXfg,É,æ,Á,Ä,í,±,ì€`Ž®,ÁfAfNfZfX,Á,«,É,¢□ê□‡,ª, ,è,Ü,·□B
,»,ì,æ,ª,ÉŽž,í□A,±,ì□Y'è,ð•ì□X,μ,Ä,,¾,³,¢□B

□i'®□«•ì□XfRf}f“fh

ftf@fCf<,ì'®□«,ð•ì□X,·,é,Æ,«,ÉŽg—p,·,éfRf}f“fh,ð□Y'è,μ,Ü,·□B•W□€,í"SITE
CHMOD"fRf}f“fh,ðŽg—p,μ,Ü,·□B

□ifzfXfg,ìží—P

fzfXfg,ìží—P,đ□Ý'è,μ,Ü,·□B

Ž©“®”FŽ—

'Ê□í,í,±,ì□Ý'è,ÂŽg—p,μ,Ü,·□B

ACOS

'Ò<@Æ<□†ftf@fCf<,đŽw'è,·,é•K—v,ì, ,éACOS,É□Ú'±
,·,éŽž,ÉŽw'è,μ,Ü,·□B'Ò<@Æ<□†ftf@fCf<,í□ANLSTftf@fCf<—
¼□^fIfvfVf†f“,ì•”^a,ÂŽw'è,μ,Ü,·□B
ACOSf,□[fh,Â,í□A,¢,,Â,©,ì<@”\,^aŽg,!,Ü,¹,ñ□B

VAX VMS

VAX,É□Ú'±,·,éŽž,ÉŽw'è,μ,Ü,·□B

IRMX

IRMX,É□Ú'±,·,éŽž,ÉŽw'è,μ,Ü,·□B

ACOS-4

ACOSf,□[fh,Æ,Ù,Ú“¬,¶,Â,·,^a□Aftf@fCf<—¼,đ□i□j,ÂŠ†,ç,È,¢,æ,¤,É,μ,Ü,·□B
NLSTftf@fCf<—¼□^fIfvfVf†f“,ì□€—Ú,í□A'Ê□í,í<ó”,É,μ,Ä,,¢,Ä,,¾,³,¢□B

Stratus

Stratus,É□Ú'±,·,éŽž,ÉŽw'è,μ,Ü,·□B
Stratus,Â,í□Aftf@fCf<,ìží—P□istm,seq,È,Ç□j,đfI□[fi—¼,ì—“,É•Ž!,μ,Ü,·□B

Agilent Logic Analyzer

fAfWfÆf“fgŽĐ,ìf□fWfbfNfAfif%oCfU,É□Ú'±,·,éŽž,ÉŽw'è,μ,Ü,·□B

fVfof\N WL

fVfof\N,ìLSIfefXfgfVfXfef€WLfVfŠ□[fY,É□Ú'±,·,é,Æ,«,ÉŽw'è,μ,Ü,·□B

□iNLSTftf@fCf<—¼□^fIfvfVf†f“

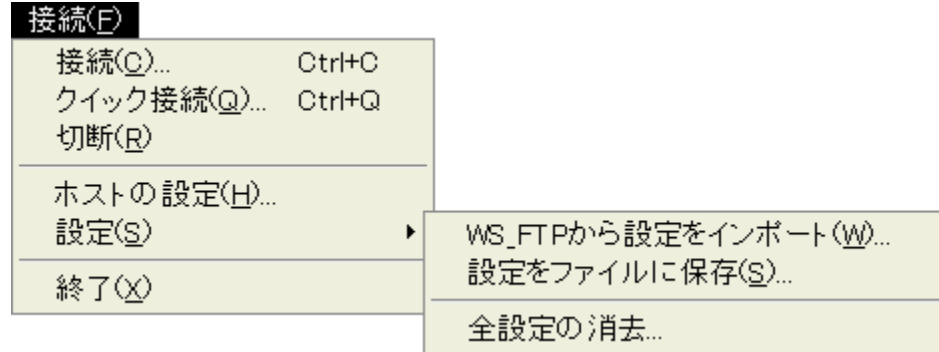
fzfXfg'¤,ìftf@fCf<^ê——,đŽæ“¾,·,éŽž,ìNLSTfRf}
f“fh,Ê•t%Â,·,éIfvfVf†f“□Aftf@fCf<—¼,đ□Ý'è,μ,Ü,·□B

fzfXfg,^aACOS,ìžž,í□A'Ò<@Æ<□†ftf@fCf<—¼,đ,±,±,ÂŽw'è,μ,Ä,,¾,³,¢□B

$$f\Box f\}f\ldots\Box[$$

$$\begin{aligned} &\Box\acute{U}'\pm\\ &\underline{fRf\}f"f\h}\\ &\underline{fufbfNf\}\Box[fN}\\ &\bullet\check{Z}_!\\ &\underline{fc\Box[f<}\\ &\underline{f\lfvf\vee f\pm f"}\\ &\underline{fwf<fv} \end{aligned}$$

□Ú±



□i□Ú±


“o~^,μ,Ä, ,ézfXfg,É□Ú±,μ,Ü,·□B

□Ú±f{f^f“,à“¬,¶“,«„Å,·□B

fzfXfg,Ö,ì□Ú±,Æ□Ø’f,ì□€–Ú,à,²—,„¾,³,¢□B

□ifNfCfbfN□Ú±

fzfXfg–¼,ð“ü—Í,μ,ÄfzfXfg,É□Ú±,μ,Ü,·□B

fNfCfbfN□Ú±f{f^f“,à“¬,¶“,«„Å,·□B

fzfXfg,Ö,ì□Ú±,Æ□Ø’f,ì□€–Ú,à,²—,„¾,³,¢□B

□i□Ø’f

fzfXfg,©,ç□Ø’f,μ,Ü,·□B

□Ø’f{f^f“,à“¬,¶“,«„Å,·□B

□ifzfXfg,ì□Ý’è

fzfXfg,ð“o~^,μ,Ü,·□B

□i□Ý’è □” WS_FTP,©,ç□Ý’è,ðfCf“f|□[fg

WS_FTP,ìfzfXfg□Ý’è,ðFFFFTP,ÉŽæ,è□ž,Ý,Ü,·□B

□i□Ý’è □” □Ý’è,ðftf@fCf<,É•Ů’¶

,e,e,e,s,o,ì□Ý’è,ðftf@fCf<,É•Ů’¶,μ,Ü,·□B

□i□Ý’è □” ‘S□Ý’è,ì□Á<Ž

FFFTP,ì□Ý'è,ð□Á<Ž,.,éŽ–,^a,Å,«,Ü,·□B
□Ý'è,ì□Á<Ž,Í□AfAf“fCf“fXfg□[f<.,éŽž,É,ì,ÝŽg—p,μ,Ä,,³/₄,³,¢□B

□i□I—¹


FFFTP,ð□I—¹,μ,Ü,·□B

fRf}f“fh

コマンド(C)	
ダウンロード(D)	Ctrl+D
アップロード(U)	Ctrl+U
名前を変えてダウンロード(Q)...	
名前を変えてアップロード(P)...	
名前を指定してダウンロード(G)...	
ファイルとしてダウンロード(F)	
ミラーリングアップロード(M)...	Ctrl+Shift+U
ファイル容量計算(Z)...	
ミラーリングダウンロード(L)...	Ctrl+Shift+D
削除(R)...	Del
名前変更(N)...	Ctrl+N
属性変更(A)...	Ctrl+T
フォルダ作成(K)...	Ctrl+K
任意のコマンド(C)...	
フォルダ同時移動(S)	

□if_fEf“f□□[fh


fzfXfg'α,©,çf□□[fJf<'α,Öftf@fCf<,ðf_fEf“f□□[fh,μ,Ü,·□B

f_fEf“f□□[fhf{f^f“,à“,”“,<“,Å,·□B

f_fEf“f□□[fh,ì□€-Ú□Af_fEf“f□□[fh,ìŠm”F,ì□€-Ú,à,²——,,³/₄,³,¢□B

□ifAfbfvf□□[fh

f□□[fJf<'α,©,çfzfXfg'α,Öftf@fCf<,ðfAfbfvf□□[fh,μ,Ü,·□B

fAfbfvf□□[fhf{f^f“,à“,”“,<“,Å,·□B

fAfbfvf□□[fh,ì□€-Ú□AfAfbfvf□□[fh,ìŠm”F,ì□€-Ú,à,²——,,³/₄,³,¢□B

□i-¼'O,ð•İ,!,Äf_fEf“f□□[fh

fzfXfg'α,É, ,éftf@fCf<,ð•Ê,ì-¼'O,Åf_fEf“f□□[fh,μ,Ü,·□B

□!fzfXfg'α,É, ,éftf@fCf<,ì-¼'O,í•İ,í,è,Ü,¹,ñ□B

□i-¼'O,ð•İ,!,ÄfAfbfvf□□[fh

f□□[fJf<'α,É, ,éftf@fCf<,ð•Ê,ì-¼'O,ÅfAfbfvf□□[fh,μ,Ü,·□B

□!f□□[fJf<'α,É, ,éftf@fCf<,ì-¼'O,í•İ,í,è,Ü,¹,ñ□B


□i-¼'O,ðŽw'è,μ,Äf_fEf“f□□[fh

fzfXfg'ð,É, ,éftf@fCf<,l-¼'O,ð“ü—Í,μ,Äf_fEf“f□□[fh,μ,Ü,·□B
,É,ñ,ç,©,l—□—R,Ä□Aftf@fCf<ê——,Éftf@fCf<-¼,a•Ž',³,ê,Ä,¢,È,¢ŽŽ,ÉŽg—
p,μ,Ü,·□B

□iftf@fCf<,Æ,μ,Äf_fEf“f□□[fh

ftf@fCf<,Å, ,é,Í,,l,à,l,ªftfHf<f_,Æ,μ,Ä•Ž',³,ê,Ä,¢
,éŽŽ□Aftf@fCf<,Æ,Y,É,μ,Äf_fEf“f□□[fh,μ,Ü,·□B
□;FFFTP,lftf@fCf<-¼,l%ð□Í,a,α,Ü,,¢,©,É,¢ŽŽ,É□A□ã<L,lÆ»□Ŭ,a□o,é□ê□‡,ª, ,è,Ü,·□B

□if~f%□[fŠf“fOfAfbfvf□□[fh

f~f%□[fŠf“fOfAfbfvf□□[fh,ð□s,È,¢,Ü,·□B
f~f%□[fŠf“fOfAfbfvf□□[fhf{f^f“,à“¬,¶“,«,Å,·□B

□Ú□×,Íf~f%□[fŠf“fOfAfbfvf□□[fh,l□€-Ú,ð,²——,,¾,³,¢□B

□iftf@fCf<—e—ÊÆvŽŽ

ftf@fCf<,l—e—Ê□iftfCfY□j,ðÆvŽŽ,μ,Ü,·□B

□if~f%□[fŠf“fOf_fEf“f□□[fh

f~f%□[fŠf“fOf_fEf“f□□[fh,ð□s,È,¢,Ü,·□B

□Ú□×,Íf~f%□[fŠf“fOf_fEf“f□□[fh,l□€-Ú,ð,²——,,¾,³,¢□B

□i□í□œ

ftf@fCf<□AftfHf<f_,ð□í□œ,μ,Ü,·□B

□í□œf{f^f“,à“¬,¶“,«,Å,·□B

ftf@fCf<□í□œ,l□€-Ú,à,²——,,¾,³,¢□B

□i-¼'O•ï□X

ftf@fCf<□AftfHf<f_,l-¼'O,ð•ï□X,μ,Ü,·□B

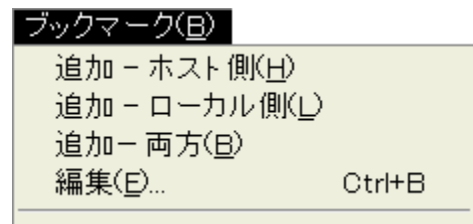
-¼'O•ï□Xf{f^f“,à“¬,¶“,«,Å,·□B

ftf@fCf<-¼•ï□X,l□€-Ú,à,²——,,¾,³,¢□B

□i'®□«•ï□X

ftfHf<f“^ˉŽž^Ú“®;ì□€–Ú,à,²——,,^{3/4},³,¢□B

***fufbfNf}*□[fN**



fufbfNf}□[fN,ízfXfg-^,É<L%〰,μ,Ü,·□B
fzfXfg,É□Ú'±,μ,Ä,¢,Ê,¢Žž,ÍŽg—p,Ä,«,Ü,¹,ñ□B

□i'Ç%Á□|*fzfXfg*'▯

fzfXfg'▯,ìĚ»□Ý,ìftfHf<f_{-1/4},ð*fufbfNf*}□[fN,É'Ç%Á,μ,Ü,·□B

□i'Ç%Á□|f□□[*fJf*<'▯

f□□[*fJf*<'▯,ìĚ»□Ý,ìftfHf<f_{-1/4},ð*fufbfNf*}□[fN,É“o~^,μ,Ü,·□B

□i'Ç%Á□|—¹/₄•û

fzfXfg'▯□Af□□[*fJf*<'▯—¹/₄•û,ìftfHf<f_{-1/4},ð*fufbfNf*}□[fN,É“o~^,μ,Ü,·□B

□i•Ò□W

fufbfNf}□[fN,ì•Ò□W,ð□s,Ê,¢,Ü,·□B

fufbfNf}□[fN,ì□€—Ú,à,²——,,³/₄,³,¢□B

•Ž!

表示(V)	
フィルタ(L)...	Ctrl+Y
検索(F)...	Ctrl+F
次を検索(N)	F3
選択(U)...	Ctrl+S
全選択／解除(A)	Ctrl+A
形式(T)	▶ 一覧(L) ✓ 詳細(D)
ソート(S)...	
. で始まるファイルを表示(D)	
ファイル一覧をビューワで表示(I)	
処理内容をビューワで表示(W)	
最新の情報に更新(R)	F5

□i ftfBf<f^{\wedge}

$\text{ftf@fCf<}\hat{\text{e}}\text{---}\text{fEfCf"fhfE,É}\cdot\text{Ž!},\cdot,\text{éftf@fCf<},\delta\Box\text{i},\text{è},\pm,\text{p},\pm,\text{Æ},^{\text{a}},\text{Å},\ll,\text{Ü},\cdot\Box\text{B}$
 $\text{ftfBf<f}^{\wedge},\text{i}\Box\text{Y}'\text{è},\text{i}\Box\text{Af}\Box\Box[\text{fJf<'}\Box\Box\text{AfzfXfg'}\Box\Box\text{---}\frac{1}{4}\cdot\text{û},\text{É}\text{---}\text{ŽŽ},\text{É}\Box\text{s},\text{È},\text{¢},\text{Ü},\cdot\Box\text{B}$

$\text{ftfBf<f}^{\wedge},\text{i}\Box\text{€-Ú},\text{à},^2\text{---},,\frac{3}{4},^3,\text{¢}\Box\text{B}$

□i $\text{€Y}\Box\text{ö}$

$\text{ftf@fCf<}\hat{\text{e}}\text{---},\text{É}\cdot\text{Ž!},^3,\text{è},\text{Ä},\text{¢},\text{éftf@fCf<--}\frac{1}{4},\delta\text{€Y}\Box\text{ö},\mu,\text{Ü},\cdot\Box\text{B}$
 $\text{f}\Box\Box[\text{fJf<'}\Box\Box\text{AfzfXfg'}\Box\Box,\text{Ç},\text{¿},\text{ç},\text{©}\cdot\text{Đ}\cdot\text{û},^{\text{a}}\text{î}\Box\text{Û},\text{Æ},\text{È},\text{è},\text{Ü},\cdot\Box\text{B}$

$\text{ftf@fCf<},\text{i}\text{€Y}\Box\text{ö},\text{i}\Box\text{€-Ú},\text{à},^2\text{---},,\frac{3}{4},^3,\text{¢}\Box\text{B}$

□i $\text{ŽY},\delta\text{€Y}\Box\text{ö}$

$\text{€Y}\Box\text{ö},\text{Å€}\text{©},\text{Â},\text{©},\text{Á},\frac{1}{2}\text{ftf@fCf<--}\frac{1}{4},\text{i}\text{ŽY},\text{i}\text{€ó}\cdot\text{â},\delta\text{€Y}\Box\text{ö},\mu,\text{Ü},\cdot\Box\text{B}$

□i 'l'đ

$\text{ftf@fCf<}\hat{\text{e}}\text{---},\text{É}\cdot\text{Ž!},^3,\text{è},\text{Ä},\text{¢},\text{éftf@fCf<},\delta\Box\text{A}^{\text{e}}\text{Š}\ddagger,\mu,\text{Ä'l'đ},\mu,\text{Ü},\cdot\Box\text{B}$
 $\text{f}\Box\Box[\text{fJf<'}\Box\Box\text{AfzfXfg'}\Box\Box,\text{Ç},\text{¿},\text{ç},\text{©}\cdot\text{Đ}\cdot\text{û},^{\text{a}}\text{î}\Box\text{Û},\text{Æ},\text{È},\text{è},\text{Ü},\cdot\Box\text{B}$



$\text{ftf@fCf<},\text{i'l'đ},\text{i}\Box\text{€-Ú},\text{à},^2\text{---},,\frac{3}{4},^3,\text{¢}\Box\text{B}$

□i $\text{'S'l'đ}\Box\text{^}\Box\text{‰}\Box\text{đ}\Box\text{œ}$

$\text{ftf@fCf<}\hat{\text{e}}\text{---},\text{É}\cdot\text{Ž!},^3,\text{è},\text{Ä},\text{¢},\text{éftf@fCf<},\delta\text{'S},\text{Ä'l'đ},\mu,\text{Ü},\cdot\Box\text{B}$

,Q%ñ-Ú,ìŽÀ□s,Å□A‘S,Ä,ì‘đ,đ%đ□œ,μ,Û,·□B
f□□[fJf<‘□A fzfXfg‘□,Ç,ç,©•Đ•û,ªî□Û,Æ,È,è,Û,·□B

□iϷŽ®

ftf@fCf<^ê——,đ□A^ê——•\Ž!,Å□s,È,□,©□Ú□×\Ž!,Å□s,È,□,©,đ‘,Ô,±,Æ,ª,Å,«,Û,·□B
^ê——f{f^f“,Æ□A□Ú□×f{f^f“
,Å‘,ÔŽ–,à,Å,«,Û,·□B

□if\□[fg

ftf@fCf<^ê——,É•Ž!,³,ê,Ä,¢,éftf@fCf<,đ•Ä,Ñ□‡,đ‘‘đ,μ,Û,·□B

f\□[fg,ì□€–Ú,à,²——,¾,³,¢□B

□i□D,ÅŽn,Û,éftf@fCf<,đ•\Ž!

ftf@fCf<-¼,ì□æ“ª,ª□D□ifhfbfg□j,ÅŽn,Û,éftf@fCf<,đ•\Ž!,·,é,©,Ç,ª,©,đ‘,Ñ,Û,·□B

□iftf@fCf<^ê——,đfrf...□[f□,Å•\Ž!


ftf@fCf<^ê——,ì“à—e,đfrf...□[f□,Å•\Ž!,μ,Û,·□B
•\Ž!,³,ê,é“à—e,í□A fzfXfg,©,ç‘—,ç,ê,Ä,«,½ftf@fCf<^ê——□î•ñ,»,ì,Û,Û,Å,·□B

□i□^—□“à—e,đfrf...□[f□,Å•\Ž!

□^—□“à—e,đfrf...□[f□,Å•\Ž!,μ,Û,·□B
□^—□“à—e,í□A,R•ªŠ,,,³,ê,½FFFTP,ìfEfCf“fhfE,ì,□,ç%ºª,ìfEfCf“fhfE,É•\Ž!,³,ê,Ä,¢,
,é,à,ì,Å,·□B

□i□Å□V,ì□î•ñ,É□X□V

ftf@fCf<^ê——,ì“à—e,đ□X□V,μ,Û,·□B

•\Ž!,đ□X□Vf{f^f“,à““,¶“,«,Å,·□B

fc[f<

ツール(T)

ワンタイムパスワード計算(O)...

if“f^fCf€fpfXf[fh,ìƎvŽZ

f“f^fCf€fpfXf[fh,íA^ê”Ê“l,Èvf ofCf_“™,Å,íŽg—p,μ,Ä,¢,Ü,¹,ñB

f`fffƎf“fW•¶Žš—

ñAfpfXftfƎ[fY,ð,à,Æ,Éf“f^fCf€fpfXf[fh,ðƎvŽZ,μ,Ü,·B

FFFTP,ÅfzfXfg,Éf ofCf“,·,éŽž,íAf“f^fCf€fpfXf[fh,^aŽg,í,ê,Ä,¢,é,±
,Æ,ðƎŸo,μ,ÄAZ©“@“l,Éf“f^fCf€fpfXf[fh,ðƎvŽZ,μ,Ü,·,ì,ÅA,±
,ìfc[f<,ÅƎvŽZ,·,é•K—v,í, ,è,Ü,¹,ñB

Ú,μ,¢Žg,¢•û,íf“f^fCf€fpfXf[fh,ìƎvŽZ,ì€–Ú,ð,²——,,³/₄,³,¢B

flfvfVf‡f“

オプション(O)

環境設定(S)...

□İŠÂ«□Ý'è

ŠeŽí,ì□Ý'è,đ□s,È,¢,Ü,·□B

□Ú□×,íŠÂ«□Ý'è,ì□€–Ú,đ,²——,,³/₄,³,¢□B

fwf<fv

ヘルプ(H)	
目次(C)	F1
問題が起きた時には(T)	
FFFTPについて(A)...	

□i-ÚŽŸ

,±,ìfwf<fv,ì-ÚŽŸ,ð•Ž',μ,Ü,·□B

□i-â'è,ªN,«,½Žž,É,Í

,æ,<N,±,é-â'è,Æ%ðŒ^•û-@,ð•Ž',μ,Ü,·□B

□iFFFTP,É,Â,¢,Ä

FFFTP,ìfo□[fWf±f“□î•ñ,ð•Ž',μ,Ü,·□B

ŠÂ««□Ý'è

f†□[fU

“]‘—,P

“]‘—,Q

“]‘—,R

f~f%₀□[fŠf“fO

‘€□ì

•\Ž!

□Ú‘±/□Ø’f

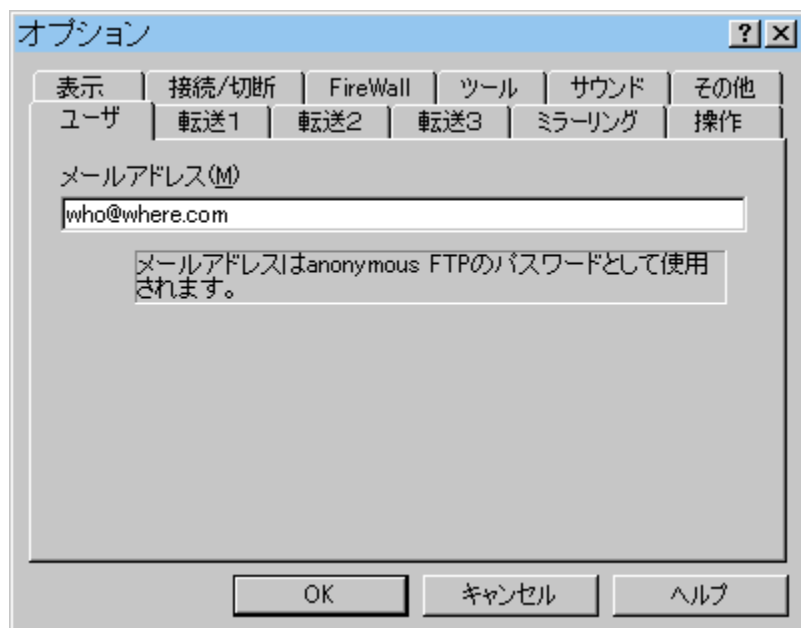
FireWall

f c□[f<

fTfEf“fh

,>,l¹/₄

ftputil

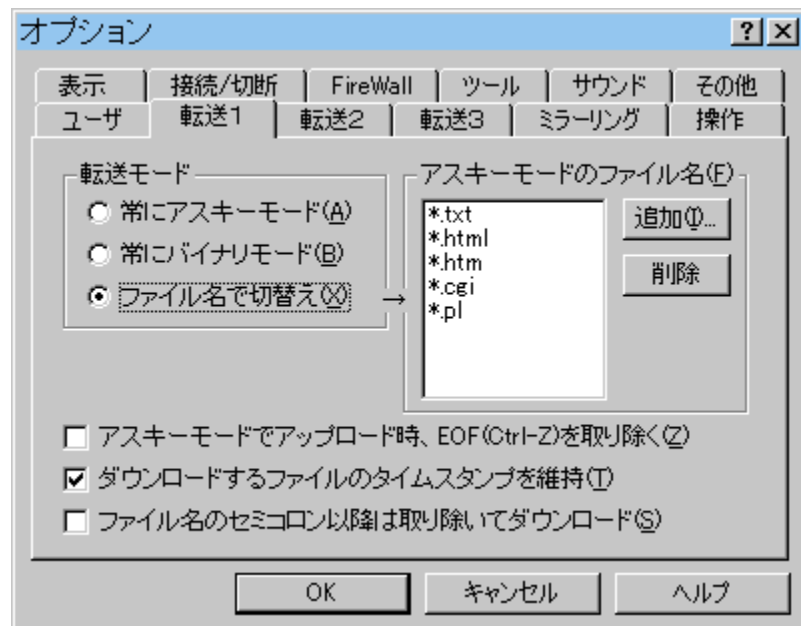


ftputil

ftputil, default user, password, and port




ftputil, anonymous - FTP, port, user, password, and port

“]’—,P



□i“]’—f,□[fh

fAfbfvf□□[fh□Af_fEf“f□□[fh,ð□AfAfXfL□[“]’—f,□[fh,Å□s,È,α
,©□AfAfCfiŒ“]’—f,□[fh,Å□s,È,α,©,ð□Y’è,μ,Ü,·□B
ftf@fCf<-¼,Å□Ø’Ö,!,Å,Í□A“]’—,·,éftf@fCf<,lftf@fCf<-¼,É,æ,Á,Ä“]’—
f,□[fh,ð□Ø’Ö,!,é,±,Æ,ª,Å,«,Ü,·□BfAfXfL□[“]’—f,□[fh,lftf@fCf<-¼,ðŽw’è,μ,Ä,-
,¾,³,¢□B

fAfXfL□[“]’—f,□[fhf{f^f“□AfAfCfiŒ“]’—f,□[fhf{f^f“
□AfAfCfiŒ“]’—f,□[fh□Ø’Ö,!,f{f^f“
Å,Í,Ô,±,Æ,à,Å,«,Ü,·□B,±,Ì·û-@,Å,Í,ñ,¾□Y’è,Í·Û“¶,³,è,Ü,¹,ñ□B□Y’è,ð·Û“¶,μ,½,¢
,Æ,«,Í□AfIfvfVf‡f“□Y’èEfCf“fhfE,Å□Y’è,μ,Ä,,¾,³,¢□B

□ifAfXfL□[f,□[fh,lftf@fCf<-¼

“]’—f,□[fh,ªftf@fCf<-¼,Å□Ø’Ö,!,l,Æ,«,É□AfAfXfL□[f,□[fh,Å“]’—
,·,éftf@fCf<,lftf@fCf<-¼,ðŽw’è,μ,Ü,·□Bf□fCf<fhfJ□[fh,ðŽg—p,Å,«,Ü,·□B

□ifAfXfL□[f,□[fh,ÅfAfbfvf□□[fhŽŽ□AEOf(Ctrl-Z),ðŽæ,è□œ,

fAfbfvf□□[fh,·,é•¶□ftf@fCf<,lEOffR□[fh,ðŽæ,è□œ,«,Ü,·□B
ftf@fCf<,l“r†,ÉEOffR□[fh,ª,·,éŽŽ□AfAfbfvf□□[fh,·,é•¶□,ÍEOF,Ü,Å,É,È,è,Ü,·□B

□if_fEf“f□□[fh,·,éftf@fCf<,lf^Cf€fXf^f“fv,ð^Ž□

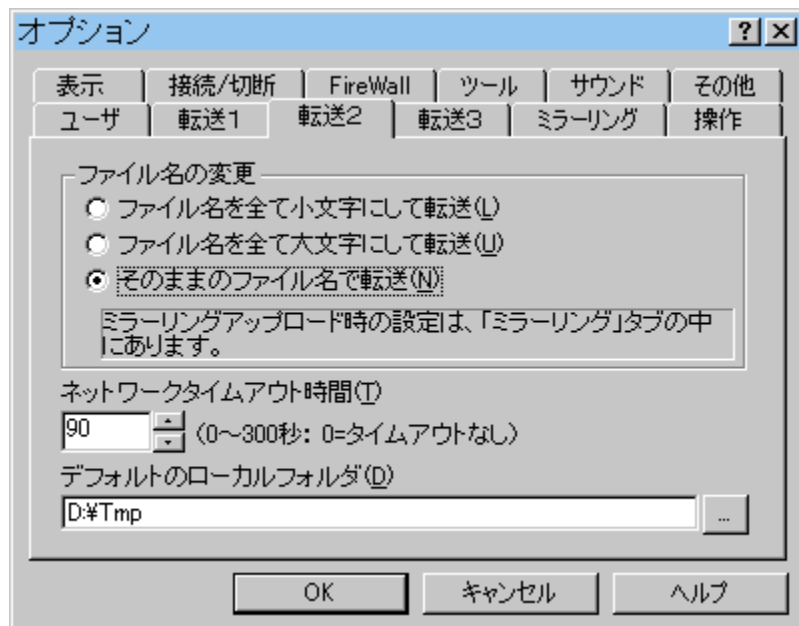
f_fEf“f□□[fh,μ,½ftf@fCf<,lf^fCf€fXf^f“fv,ð□AfzfXfg,lì“ú•t,É□‡,í,¹,Ü,·□B

□iftf@fCf<-¼,lífZf~fRf□f“^È□~,ÍŽæ,è□œ,¢,Äf_fEf“f□□[fh

fzfXfg‘ª,lftf@fCf<-¼,ÉfZf~fRf□f“□i□G□j,ªŠÜ,Ü,ê,Ä,¢,éŽž□A,»,ê^È□~,ÍŽæ,è□œ,¢
,½ftf@fCf<-¼,Äf_fEf“f□□[fh,μ,Ü,·□B
VAX VMS,ì—š—ð”Õ□†,ðŽæ,è□œ,Žž,ÉŽg—p,Å,«,Ü,·□B

—á□j□@fzfXfg‘ª□F SAMPLE.TXT;12□@□“□@f□□[fJf<‘ª□F SAMPLE.TXT

“]‘—,Q



□iftf@fCf<-¼,ìï□X

ftf@fCf<,lf_fEf“f□□[fh□AfAbfvf□□[fh,ð□s,æ,«É□Aftf@fCf<-¼,ð□→•¶Žš□A,Ü,½,í,â•¶Žš,É•İŠ,.,é,±,Æ,ª,Å,«,Ü,·□B

,±,ì□Ý’è,íf~f%□[fŠf“fOfAbfvf□□[fh,ìžž,ížg—
p,µ,Ü,¹,ñ□Bf~f%□[fŠf“fOfAbfvf□□[fh,ìžž,ì□Ý’è,í□Af~f%□[fŠf“fO,Å□Ý’è,µ,Ü,·□B

□iflfbfgf□□[fNf^fCf€fAfEf gŽžŠÔ

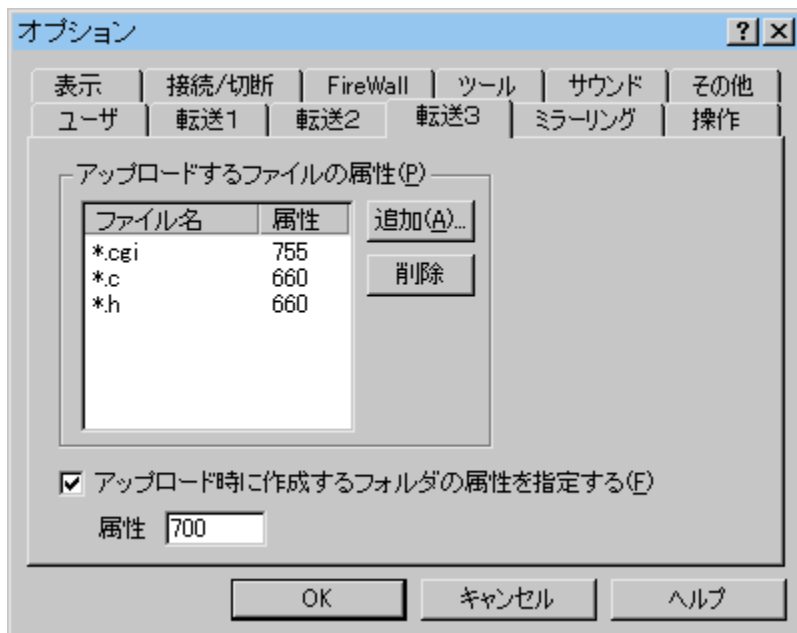
fRf}}f“fh,Éí,.,éfŠfvf%□fC,ì‘Ò,¿ŽžŠÔ,ð•b^P^Ê,Å□Ý’è,µ,Ü,·□B

,O,É,.,é,Æ□Af^fCf€fAfEf g,µ,È,¢,æ,ª
,É,µ,Ü,·□B□i,½,¾,µ□AFFFTP,íf^fCf€fAfEf g,ðÆvª,µ,Ü,¹,ñ,ª□AfzfXfg,ªf^fCf€fAfEf
g,.,é,±,Æ,Í,.,è,Ü,·□B□j

□iffftfHf<fg,lf□□[fJf<ftfHf<f_

fvf□fOf%□f€N“®Žž,ìf□□[fJf<ftfHf<f_,ðŽw’è,µ,Ü,·□B
fRf}}f“fhf%□fC“,Åftf@fCf<-¼,ðŽw’è,µ,Åftf@fCf<,ðf_fEf“f□□[fh,.,é,Æ,«,í□A,±,±
,ÅŽw’è,µ,½ftfHf<f_,Éf_fEf“f□□[fh,³,ê,Ü,·□B

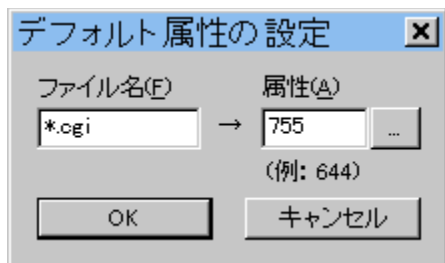
“]‘—,R



□ifAfbfvf□□[fh,·,éftf@fCf<,ì'®□«

ftf@fCf<,ì'®□«,ð, ,ç,©,¶,ßŽw'è,μ,Ä,,±
,Æ,É,æ,è□AfAfbfvf□□[fh,μ,½ftf@fCf<,ì'®□«,ªŽw'è,ì!,É,È,è,Ü,·□B

'Ç%oÁf{f^f“,ð%Ÿ,·,Æ□AZŸ,ì,æ,ª,ÈfEfCf“fhfE,ª•Ž!,³,ê,Ü,·□B



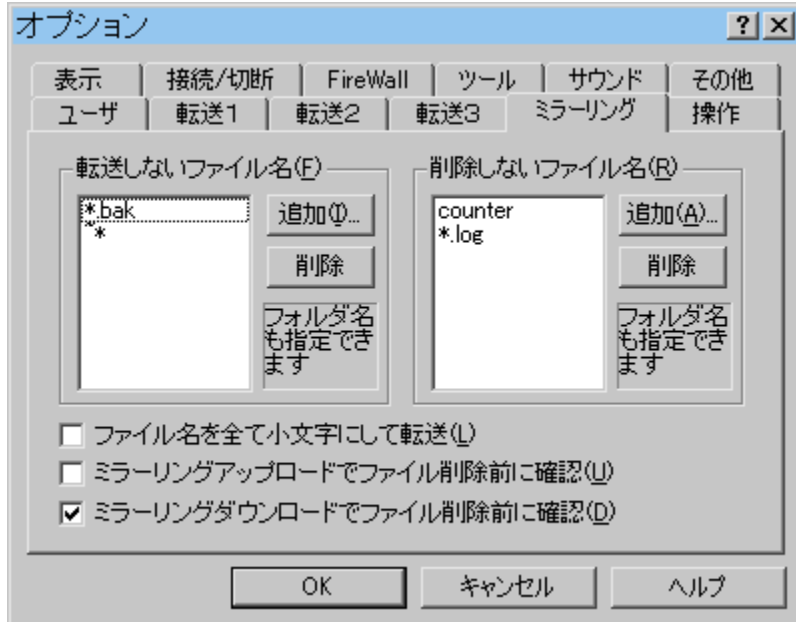
ftf@fCf<—¼,Æ□A'®□«,ðŽw'è,μ,Ä,,¾,³,¢□B

□ifAfbfvf□□[fhŽž,É□ì□¬,·,éftfHf<f_,ì'®□«,ðŽw'è,·,é

fAfbfvf□□[fhŽž,ÉfzfXfgª,É□ì□¬,·,éftfHf<f_,ì'®□«,ð, ,ç,©,¶,ßŽw'è,Å,«,Ü,·□B

'®□«,ðŽw'è,μ,Ä,,¾,³,¢□B

$f \sim f \% \square [f \check{S} f " f O$



$f \sim f \% \square [f \check{S} f " f O, \acute{E} \check{S} \ddot{O}, \cdot, \acute{e} \square \acute{Y}' \grave{e}, \delta \square s, \acute{E}, \Phi, \ddot{U}, \cdot \square B$

$\square i "] ' \text{---} \mu, \acute{E}, \Phi f t f @ f C f \leftarrow \text{---} \frac{1}{4}$

$f \square \square [f J f \leftarrow \acute{\alpha}, \acute{E}, \cdot, \acute{e} f t f @ f C f \leftarrow \square ^ f t f H f \leftarrow f _ _ , \grave{\alpha}, \grave{\alpha} \square A f z f X f g \acute{\alpha}$
 $, \ddot{O} f A f b f v f \square \square [f h, \mu, \acute{E}, \Phi f t f @ f C f \leftarrow \text{---} \frac{1}{4} \square ^ f t f H f \leftarrow f _ _ \text{---} \frac{1}{4}, \delta \check{Z} w' \grave{e}, \mu, \ddot{U}, \cdot \square B$

$, \pm, \pm, \check{A} \check{Z} w' \grave{e}, ^3, \hat{e}, \frac{1}{2} f t f @ f C f \leftarrow \text{---} \frac{1}{4}, \grave{\alpha} f t f @ f C f \leftarrow , ^a \check{S} \ddot{u}, \acute{E} f z f X f g \acute{\alpha}, \acute{E}, \cdot, \acute{e} \square \hat{e} \square \ddagger \square A, \gg, \grave{\alpha} f t f @ f C f \leftarrow , \acute{\alpha} z$
 $f X f g, \textcircled{c}, \grave{\alpha} \square \acute{\alpha} \square \textcircled{\alpha}, ^3, \hat{e}, \ddot{U}, \cdot \square B$

$\square i \square \acute{\alpha} \square \textcircled{\alpha}, \mu, \acute{E}, \Phi f t f @ f C f \leftarrow \text{---} \frac{1}{4}$

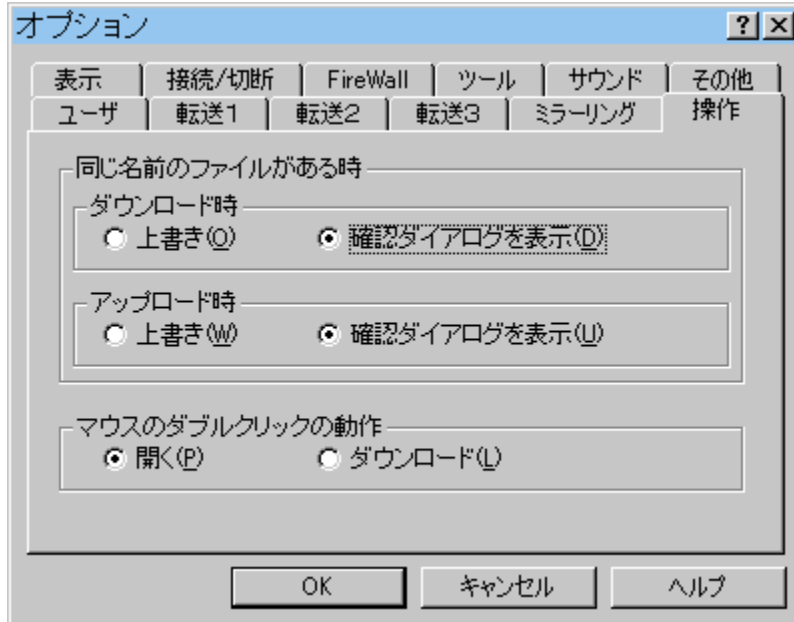
$f \square \square [f J f \leftarrow \acute{\alpha}, \acute{E} \text{---} ^3, \Phi, \text{---}, \hat{e}, \grave{\alpha}, \grave{\alpha} z f X f g, \textcircled{c}, \grave{\alpha} \square \acute{\alpha} \square \textcircled{\alpha}, \mu, \acute{E}, \Phi f t f @ f C f \leftarrow \text{---} \frac{1}{4} \square ^ f t f H f \leftarrow f _ \text{---}$
 $\frac{1}{4}, \delta \check{Z} w' \grave{e}, \mu, \ddot{U}, \cdot \square B$

$f \sim f \% \square [f \check{S} f " f O f A f b f v f \square \square [f h, \check{A}, \acute{\alpha} \square A f \square \square [f J f \leftarrow \acute{\alpha}, \acute{E} \text{---}$
 $^3, \Phi f t f @ f C f \leftarrow , \acute{\alpha} z f X f g, \textcircled{c}, \grave{\alpha} \square \acute{\alpha} \square \textcircled{\alpha}, \mu, \ddot{U}, \cdot, ^a \square A, \pm, \pm, \check{A} \check{Z} w' \grave{e}, ^3, \hat{e}, \frac{1}{2} f t f @ f C f \leftarrow , \acute{\alpha} \square \acute{\alpha} \square \textcircled{\alpha}, \mu, \ddot{U}, ^1, \check{n} \square B$

$\square i f t f @ f C f \leftarrow \text{---} \frac{1}{4}, \delta \square \text{---} \cdot \P \check{Z} \check{S}, \acute{E}, \mu, \check{A} "] ' \text{---}$

$f t f @ f C f \leftarrow \text{---} \frac{1}{4} \square A f t f H f \leftarrow f _ \text{---} \frac{1}{4}, \delta \square \text{---} \cdot \P \check{Z} \check{S}, \acute{E} \cdot \acute{\alpha} \square X, \mu, \check{A} "] ' \text{---}, \mu, \ddot{U}, \cdot \square B$

‘€□ì



□i““,ŋ-¼‘O,ìftf@fCf<,ª, ,éžž

fAfbfvf□□[fh□Af_fEf“f□□[fh,ð□s,È,ª□Ű,É□A““,ŋ-¼‘O,ìftf@fCf<,ª, ,Á,½,Æ,«,,îµ,¢
,ð□Ý’è,µ,Û,·□B

□if_fEf“f□□[fhžž

□í,É□ã□‘,«,ð□s,È,ª,©□A,»,,ì“s“xŠm”F,ìfEfCf“fhfE,ð□o,·,©,ì,Ç,¿,ç,©,©,ç‘l,Ñ,Û,·□B

□ifAfbfvf□□[fhžž

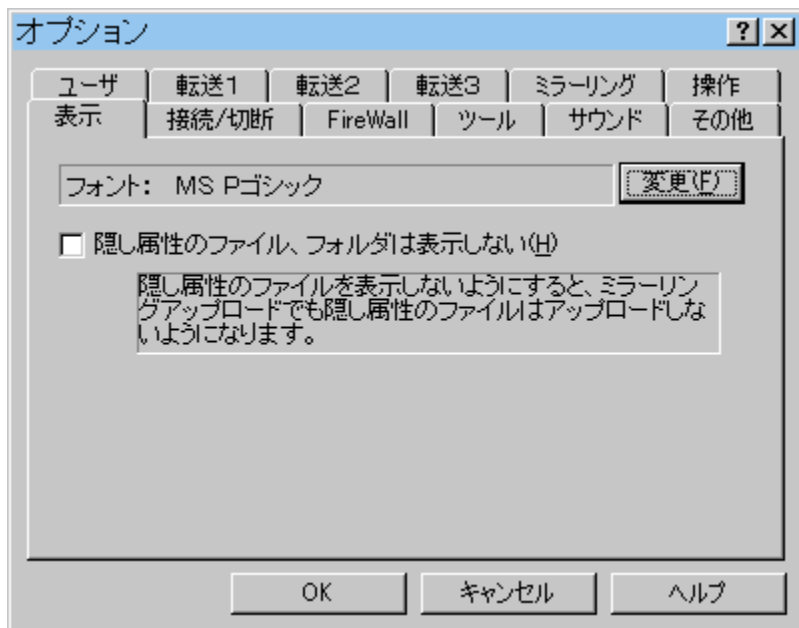
□í,É□ã□‘,«,ð□s,È,ª,©□A,»,,ì“s“xŠm”F,ìfEfCf“fhfE,ð□o,·,©,ì,Ç,¿,ç,©,©,ç‘l,Ñ,Û,·□B

Šm”FfEfCf“fhfE,ð•Ž|,·,é,Æ,«,,í□A•K—v,É%ž,ŋ,Äftf@fCf<^ê——
,ðfzfXfg,©,çŽæ,èŠñ,¹,é,½,ß□A,»,,ì,Ô,ñžžŠÔ,ª,©,©,è,Û,·□B

□i{fEfX,ìf_fuf<fNfŠfbfN,ì“@□ì

f}fEfX,Äftf@fCf<-¼,ðf_fuf<fNfŠfbfN,µ,½,Æ,«□A□uŠJ,-
□v,ì“@□ì,ð,·,é,©□uf_fEf“f□□[fh£,ì“@□ì,ð,·,é,©,ð□Ý’è,µ,Û,·□B

・Z;



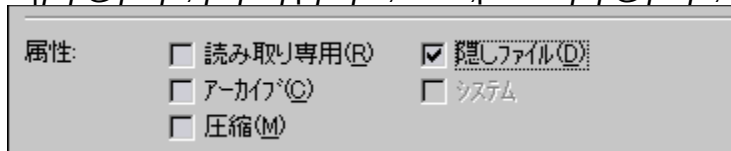
□iftfHf“fg

ftf@fCf<fŠfXfg,Æ□AfzfXfg-¼^ê——f_fCfAf□fO,ÅŽg—
p,·,éftfHf“fg,đ□Y'è,μ,Ü,·□B

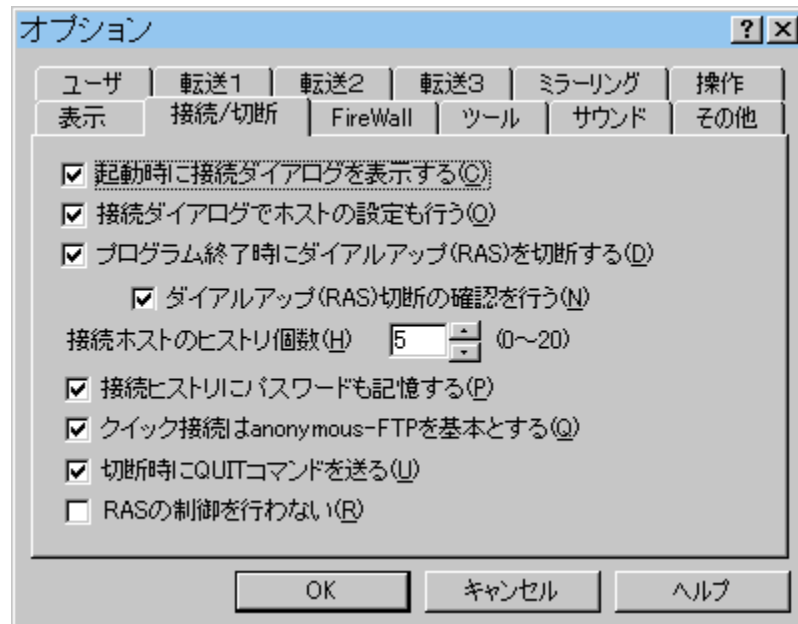
□i%B,μ'®□«,ìftf@fCf<□AftfHf<f_,í•Ž!,μ,È,¢

f□□[fJf<'α,ìftf@fCf<,Å%B,μ'®□□«,É,È,Á,Ä,¢,éftf@fCf<,í□Aftf@fCf<^ê——
,É•Ž!,μ,È,¢,æ,α,É,μ,Ü,·□B,±
,ìê□±□Af~f%□[fŠ“fOfAfbfvf□□[fh,È,Ç,Å,àfAfbfvf□□[fh,μ,È,,È,è,Ü,·□B

□!ftf@fCf<,ìfvf□fpfefB,Å%B,μ'®□«ftf@fCf<,đŒ©,½,Æ,±,ë□B




□Ú±/□Ø'f



□i<N“@Žž,É□Ú±f_fCfAf□fO,ð•Ž!

fvf□fOf%of€<N“@Žž,É□A□Ú±,½,ß,lfzfXfg^ê——fEfCf“fhfE,ð•Ž!,μ,Ü,·□B

□i□Ú±f_fCfAf□fO,ÂfzfXfg,ì□Ý'è,à□s,¤

□Ú±f{f^f“ð%Ÿ,μ,½Žž□A, ,é,¢,í□Ú±f□fjf...□[,ì□Ú±
,ð□s,Â,½Žž,É□AfzfXfg,ì□Ý'è,à,Â,«,éfzfXfg^ê——f_fCfAf□fO,ð•Ž!,μ,Ü,·□B
f_fFfbfNf}□[fN,ðŠO,·,Æ□AŠÊ^Õ”Â,lf_fCfAf□fO,ð•Ž!,μ,Ü,·□B

□ifvf□fOf%of€□I—¹Žž,Éf_fCfAf<fAfbfv(RAS),ð□Ø'f,·,é

fvf□fOf%of€,ð□I—¹,·,éŽž,Éf_fCfAf<fAfbfv□Ú±,ð□Ø'f,μ,Ü,·□B

□if_fCfAf<fAfbfv(RAS)□Ø'f,ìŠm”F,ð□s,¤

f_fCfAf<fAfbfv□Ú±,ì□Ø'f,ð,·,é,©,Ç,¤,©,ìŠm”F,ð□s,¢,Ü,·□B

□i□Ú±fzfXfg,lfqfXfgfŠŒÂ□”

□i,Ü,Â,É□Ú±,μ,½fzfXfg,lfqfXfgfŠ,ð,¢,,Â•Ž!,·,é,©,ð□Ý'è,μ,Ü,·□B
fqfXfgfŠ,ì□A•Ž!f□fjf...□[,ÆfnfCfbfN□Ú±,lfEfCf“fhfE,É•Ž!,³,ê,Ü,·□B

□i□Ú±fzfXfg,lfqfXfgfŠ,ÉfpfXf□□[fh,à<L%—,·,é

□Ú±,μ,½fzfXfg,lfqfXfgfŠ,ÉfpfXf□□[fh,à<L%—,μ,Ü,·□B

□Ú'±,·,é□Ů,Éf p f X f □□[f h,đ"ü—Í,·,é•K—v,^a,È,-
,È,è,Ü,·,^a□A,P'ä,İPC,đ•j□"□I,ÅŽg,□□ê□‡,È,Ç,Í□A f Z f L f ...
f Š f e f B,đ•Ů,Â,¹/₂,ß,É<L%□,μ,È,¢,æ,¤,É,μ,Ä,,³/₄,³,¢□B

□i f N f C f b f N □Ú'±,Íanonymous-FTP,đŠî- {,Æ,·,é

f N f C f b f N □Ú'±,İ f E f C f " f h f E,İ f † □[f U-
¹/₄,Ēanonymous,đ□A f p f X f □□[f h,É f □□[f < f A f h f Ą f X,đ,·,ç,©,¶,ß"ü—Í,μ,Ä,",,©,Ç,¤
,©,đ'İ,Ń,Ü,·□B



□i□Ø'fžž,ÉQUIT f R f } f " f h,đ'—,é

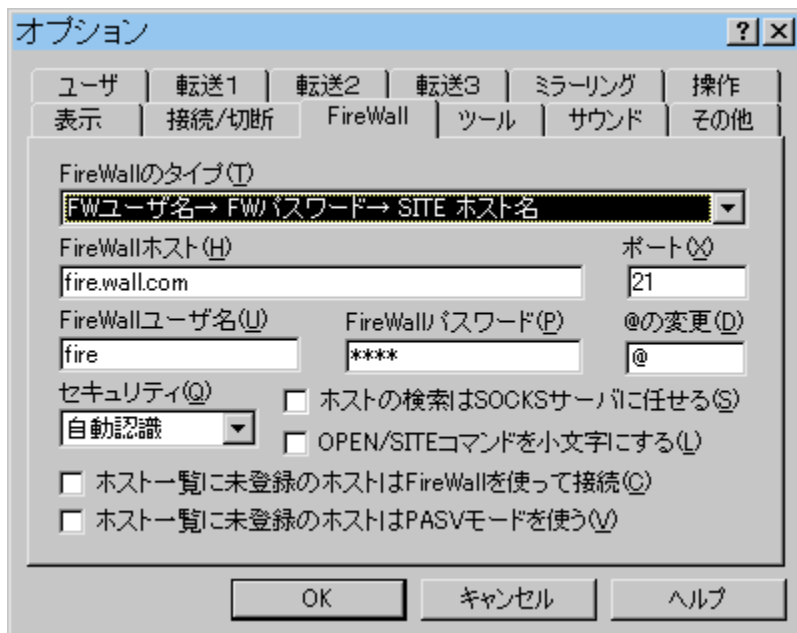
f z f X f g,©,ç□Ø'f,·,é,Æ,«,ÉQUIT f R f } f " f h,đ f z f X f g,É'—,é,©,Ç,¤,©,đ□Ý'è,μ,Ü,·□B

□%Šú□ó'Ô,Å,Í f R f } f " f h,đ'—,ç,È,¢□Ý'è,É,È,Á,Ä,¢,Ü,·□B
□i f _ f C f A f < f A f b f v □Ú'±,İ□ê□‡□AQUIT f R f } f " f h,³/₄,¯,İ,¹/₂,ß,É f _ f C f A f < f A f b f v,đ□Ú'±
,μ,È,"·□ê□‡,^a,·,é,¹/₂,ß□A□%Šú□ó'Ô,Å,Í'—,ç,È,¢,æ,¤,É,μ,Ä,¢,Ü,·□B□j

□i RAS,İ□§Ąä,đ□s,í,È,¢

RAS□i f _ f C f A f < f A f b f v □j,İ f % f C f u f % f Š,đŽg—p,μ,È,¢,æ,¤,É,μ,Ü,·□B
FFFTP,İ<N"®Žž,ÉRASSÖĄEW,İ f G f %□[^a•Ž|,³,è,éžž,É□A f ` f F f b f N f } □[f N,đ•t,¯,Ä,-
,³/₄,³,¢□B

FireWall



□if^fCfv

ŽŸ,ì†,©,çf^fCfv,ð'ì,Ñ,Ü,·□B

f^fCfv,P□F□@FWf†□[fU-¼□FWfpfXf□□[fh□SITE fzfXfg-¼

ŽŸ,ìžè□‡,ÅfzfXfg,É□Ú'±,μ,Ü,·□B

□@□@FireWall,É□Ú'±□
 □@□@□@□@FireWall,ìf†□[fU-¼,ÆfpfXf□□[fh,Åf□fOfCf"□
 □@□@□@□@□@□@"SITE fzfXfg-¼",ð'—□M□
 □@□@□@□@□@□@□@□@□@fzfXfg,ìf†□[fU-
 ¼,ÆfpfXf□□[fh,Åf□fOfCf"

f^fCfv,Q□F□@FWf†□[fU-¼□FWfpfXf□□[fh□USER f†□[fU-¼@fzfXfg-¼

ŽŸ,ìžè□‡,ÅfzfXfg,É□Ú'±,μ,Ü,·□B

□@□@FireWall,É□Ú'±□
 □@□@□@□@FireWall,ìf†□[fU-¼,ÆfpfXf□□[fh,Åf□fOfCf"□
 □@□@□@□@□@□@fzfXfg,ìf†□[fU-¼@fzfXfg-
 ¼,Æ□AfzfXfg,ìfpfXf□□[fh,Åf□fOfCf"

f^fCfv,R□F□@FWf†□[fU-¼□FWfpfXf□□[fh

ŽŸ,ìžè□‡,ÅfzfXfg,É□Ú'±,μ,Ü,·□B

@@@FireWall,ÉÚ'±"
@@@FireWall,ìf+[fU-¼,ÆpfXf[fh,ÅfOfCf"
@@@fzfXfg,ìf+[fU-¼,ÆpfXf[fh,ÅfOfCf"

f^fCfv,SF@USER f+[fU-¼@fzfXfg-¼

ŽŸ,ìžè±,ÅfzfXfg,ÉÚ'±,μ,Ü,·B

@@@FireWall,ÉÚ'±"
@@@fzfXfg,ìf+[fU-¼@fzfXfg-¼,ÆA fzfXfg,ìpfXf[fh,ÅfOfCf"

f^fCfv,TF@OPEN fzfXfg-¼

ŽŸ,ìžè±,ÅfzfXfg,ÉÚ'±,μ,Ü,·B

@@@FireWall,ÉÚ'±"
@@@@"OPEN fzfXfg-¼",ð'—M"
@@@fzfXfg,ìf+[fU-¼,ÆpfXf[fh,ÅfOfCf"

f^fCfv,UF@SOCKS4

SOCKS(Ver.4),ðžg—p,μ,ÄfzfXfg,ÉÚ'±,μ,Ü,·B

f^fCfv,VF@SOCKS,T ("FØ,È,μ)

SOCKS(Ver.5),ðžg—p,μ,ÄfzfXfg,ÉÚ'±,μ,Ü,·B
"FØ,Ís,¢,Ü,¹,ñB

f^fCfv,WF@SOCKS,T (f+[fU-¼A pfXf[fh"FØ)

SOCKS(Ver.5),ðžg—p,μ,ÄfzfXfg,ÉÚ'±,μ,Ü,·B
"FØ,ì,½,ß,ìf+[fU-¼,ÆpfXf[fh,ð"ü—Í,μ,Ä,,¾,³,¢B

f^fCfv,XF@USER FWf+[fU-¼FFWpfXf[fh@fzfXfg-¼

ŽŸ,ìžè±,ÅfzfXfg,ÉÚ'±,μ,Ü,·B

@@@FireWall,ÉÚ'±"
@@@@"USER FWf+[fU-¼FFWpfXf[fh@fzfXfg-¼",ð'—M"
@@@fzfXfg,ìf+[fU-¼,ÆpfXf[fh,ÅfOfCf"

!SOCKS,ì•W€,ìf|f"Ô†,Í 1080 ,Ä,·B

!SOCKS5,ìGSS-API"FØ,ìfTf|f"fg,μ,Ä,¢,Ü,¹,ñB

□iFireWallfzfXfg

,e,%o,',...v,□,Æ,Æ,lfzfXfg,lfAfhfÆfX,ð□Ý'è,μ,Ü,·□B

□if|□[fg

FireWall,lf|□[fg"Ô□†,ð□Ý'è,μ,Ü,·□B

□iFireWallf†□[fU-¼

FireWall,Éf□fOfCf“,·,éŽž,lf†□[fU-¼,ð□Ý'è,μ,Ü,·□B
□ã<L,lf^fCfv,ì,α,¿□Af^fCfv,P□Af^fCfv,Q□Af^fCfv,T,ðŽg—p,·,é,Æ,«,É,ì,Ý•K—
v,Â,·□B

□iFireWallfpfXf□□[fh

FireWall,Éf□fOfCf“,·,éŽž,lfpfXf□□[fh,ð□Ý'è,μ,Ü,·□B
f^fCfv,P,Ü,½,lf^fCfv,Q,ìFireWall,ðŽg—p,·,é,Æ,«,É,ì,Ý•K—v,Â,·□B

□i@,ì,ï□X

FW,lf^fCfv,af^fCfv,Q□C,S□A,X,ìŽž,É□A□u□—□v,ð•Ê,ì•¶Žž,É'u,«Š,!,é,±
,Æ,^a,Â,«,Ü,·□B
□%Šú'l,í□u□—□v,Â,·□B

□ifZfLf...fŠfefB

f□f“f^fCf€fpfXf□□[fh,ì□Ý'è,ð,μ,Ü,·□B□%Šú□Ý'è,íŽ©“®”FŽ¬,Â,·□B
f□f“f^fCf€fpfXf□□[fh,ìÆ`Ž®,ðFFFTP,^aŠÔ^á,Á,Ä”FŽ¬,μ,Ä,¢,é,ÆŽv,í,ê,éŽž,í□AŽg—
p,μ,Ä,¢,éÆ`Ž®,ð□Ý'è,μ,Ä,,¾,¾,¾,¢□BMD4(S/KEY)□AMD5, SHA-1,ì,¢,,ê,©,ð'l,Ô,±
,Æ,^a,Â,«,Ü,·□B

□ifzfXfg,ìÆÿ□ð,íSOCKSfT□[fo,É”C,¹,é

FFFTP,ífzfXfg,ðÆÿ□ð,¹,□ASOCKSfT□[fo,ÉÆÿ□ð,ð”C,¹,Ü,·□B

,±,ì□€—Ú,Éf`fFfbfNf}
□[fN,ð•t,¬,È,¢Žž□iffftfHf<fg□j,í□A,Ü,,FFFTP,^azfXfg,ðÆÿ□ð,μ□AÆ©,Â,©,ç,È,¬,ê,îS
OCKSfT□[fo,ÉÆÿ□ð,ð”C,¹,Ü,·□B

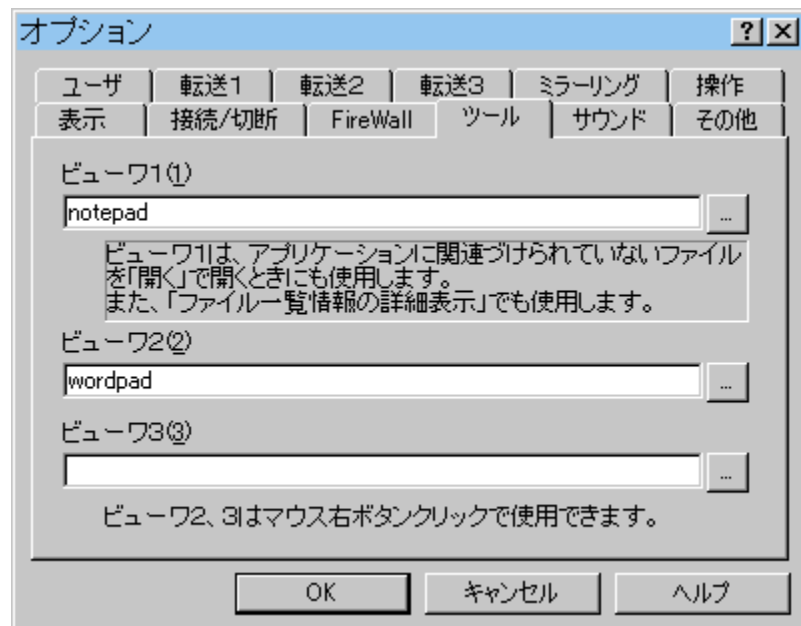
□ifzfXfg^ê——,É—¢“o~^,lfzfXfg,íFireWall,ðŽg,Á,Ä□Ú'±

fNfCfbfN□Ú'±□A,·,é,¢,ífRf}f“fhf%fcf“,ÂzfXfg,ðŽw'è,μ,Ä□Ú'±
,·,é,Æ,«□AFireWall,ðŽg,α,©,Ç,α,©,ð□Ý'è,μ,Ü,·□B

□ifzfXfg^ê——,É-¢“o~^,lfzfXfg,ÍPASVf,□[fh,đŽg,¤

fNfCfbfN□Ú'±□A, ,é,¢,ÍfRf}}f“fhf%o fCf“,ÅzfXfg,đŽw'è,μ,Ä□Ú'±
,·,é,Æ,«□APASVf,□[fh,đŽg,¤,©,Ç,¤,©,đ□Ý'è,μ,Ü,·□B

fc[f<



ifrf...[f,P

ifrf...[f,Q

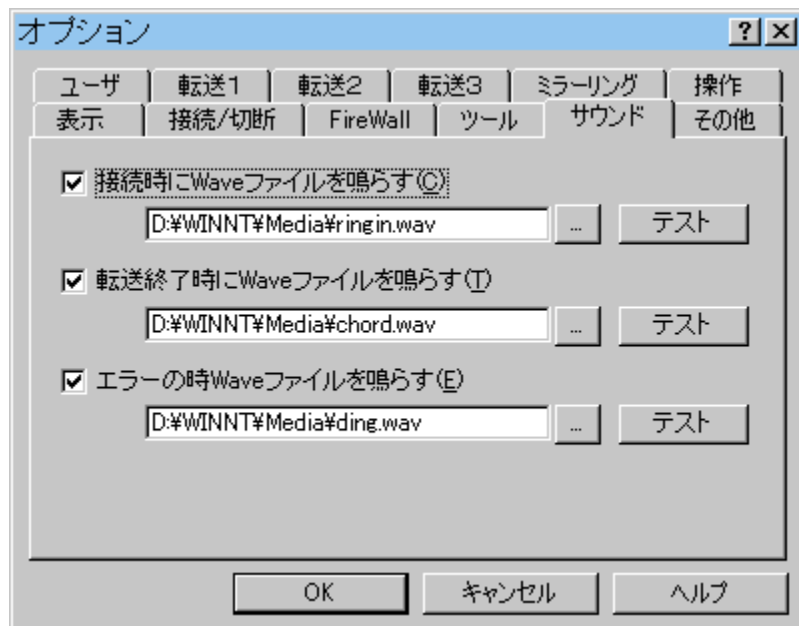
ifrf...[f,R

ftf@fCf<"à—e,ð•Ž!,,é,Æ,«„ÉŽg—p,,éf c[f<,ð□Ý'è,μ,Ü,·□B

ftf@fCf<—¼,ðf_fuf<fNfŠfbfN,μ,½,Æ,«□Aftf@fCf<—
¼,ÉŠÖ~A,Ã,¯,ç,ê,½fAfvfŠfP□[fVf‡f",ª,,ê,Î□A,»,ÌfAfvfŠfP□[fVf‡f",ð<N"®,μ,Ü,·□BŠ
Ö~A,Ã,¯,ç,ê,½fAfvfŠfP□[fVf‡f",ª,È,,ê,Î□Afrf...
□[f□,P,ÅŽw'è,³,ê,½fAfvfŠfP□[fVf‡f",ð<N"®,μ,Ü,·□B

,Ü,½□Af}}fEfX,ì%Ef{f^f"f□fjf...□[Åfrf...□[f□,P□`frf...□[f□,R,ð'l,ñ,Å<N"®,·,é,±
,Æ,ª,Å,«,Ü,·□B

fTfEf“fh



□i□Ú‘±Žž,ÉWaveftf@fCf<,đ-Â,ç,·

□Ú‘±,ªŠ®—¹,µ,½Žž,ÉWaveftf@fCf<,đ-Â,ç,µ,Ü,·□B
Waveftf@fCf<,lftf@fCf<-¼,àŽw’è,µ,Ä,,¾,¾,¢□B

□i“]’—□I—¹Žž,ÉWaveftf@fCf<,đ-Â,ç,·

ftf@fCf<,lf_fEf“f□□[fh□AfAfbfvf□□[fh,ª□I—¹,µ,½Žž,ÉWaveftf@fCf<,đ-
Â,ç,µ,Ü,·□B•i□”,lftf@fCf<,đ,Ü,Æ,ß,Ä“]’—,µ,Ä,¢,éŽž,í□A□ÅÆã,É,P%ñ,¾,-Â,ç,µ,Ü,·□B
Waveftf@fCf<,lftf@fCf<-¼,àŽw’è,µ,Ä,,¾,¾,¢□B

□ifGf%□[,lŽžWaveftf@fCf<,đ-Â,ç,·

fGf%□[,ª<N,<<,½Žž□A%½,©,lŠm”F,ª•K—v,ÈŽž,ÉWaveftf@fCf<,đ-Â,ç,µ,Ü,·□B
Waveftf@fCf<,lftf@fCf<-¼,àŽw’è,µ,Ä,,¾,¾,¢□B

,»,l¼



□ifEfCf“fhfEÊu,ð•Ů‘¶

fEfCf“fhfE,ð□A,¢,Â,à“¶,¶Êu,É•Ž!,µ,Ü,•□B
fEfCf“fhfE,lfTfCfY,Í□A,±,ì□Y’è,É,©,©,í,¢,,•Ů‘¶,³,è,Ü,•□B

□iftf@fCf<ê——,ðfLffbfVf...,•,é

fŠf,□[fg‘²,lf tf@fCf<ê——,ð•Ů‘¶,µ□A,Q“x–ÚÊ□~,Íftf@fCf<ê——,ì•Ž!,ð□,‘¬,É□s,¢
,Ü,•□B

ftf@fCf<ê——,ð□X□V,•,é,Æ,«,Í□A□X□Vf{f^f“,ð%Ÿ,µ,Ä,,¾,¾,¢□B

□ifLffbfVf...f ofbftf@,ì□”

ftf@fCf<ê——,ð•Ů‘¶,•,é,Æ,«□A%½%æ–Ê•ª,Ü,Â•Ů‘¶,•,é,©,ð□Y’è,µ,Ü,•□B

□ifLffbfVf...,ð•Ů‘¶,•,é

fvf□fOf%œ,ð□l—¹,µ,Ä,à□AfLffbfVf...,ðfNfŠfA,µ,È,¢,Â•Ů‘¶,µ,Ü,•□B

□ifLffbfVf...□^□ì•Æftf@fCf<,ð□ì□¬,•,éftfHf<f_

FFFTP,ª□ì•Æftf@fCf<,ð□ì,éftfHf<f_,ðŽw’è,µ,Ü,•□B
,Ê□í,Í□%Šú!l,ì,Ü,ÜŽg—p,µ,Ä,,¾,¾,¢□B

□i□Y’è,ðfÆfWfXfgfŠ,Â,È,INIftf@fCf<,É•Ů‘¶,•,é

□Ý'è,ðINIf tf@fCf<,É•Ů‘Ŧ,.,é,æ,ø,É,μ,Ü,·□Bf}f<f`f†□[fUŠÂ««,Å,È,¢Žž,ÉŽg—p,μ,Ä,-
,¾,¾,¢□BINIf tf@fCf<,í□Affftp.exe ,ì, ,étfHf<f_É□ì□¬,μ,Ü,·□B

□%Šú□Ý'è,Å,í□AFFFTP,ífŒfWfXfgfŠ,É□Ý'è,ð•Ů‘Ŧ,μ,Ü,·□B

□i**fffbfO**

fffbfO,ì,½,ß,ìfRf“f\□[f<%æ—Ê,ð•Ž!,μ,Ü,·□B
'Ê□í,ÍŽg—p,μ,È,¢,Å,,¾,¾,¢□B

,»,l'¼

JISŠ¿ŽšfR□[fh,É,Â,ç,Ä
Š¿Žš,İftf@fCf<-¼,É,Â,ç,Ä
fpfXf□□[fh,İŽæ,è`µ,ç,É,Â,ç,Ä
jre32.dll,É,Â,ç,Ä
fo□[fWf±f“fAfbfv,É,Â,ç,Ä
fAf“fCf“fXfg□[f<,É,Â,ç,Ä
□§□İ

JIS Š ž š f R [f h , É , Â , Ç , Ä

□ i JIS □ " SHIFT-JIS , ì • ¶ Ž š f R [f h • i Š •

^ È % ° , ì f G f X f P [f v f V [f P f " f X , ð " F Ž ¯ , μ , Ü , · □ B

<ESC>\$B <ESC>\$@ □ C □ C □ C □ C □ C □ C □ C Š ž Š š , Ö □ Ø ' Ö , !
<ESC>(I □ C □ C □ C □ C □ C □ C □ C □ C □ C " ¼ Š p f J f i , Ö □ Ø ' Ö , !
<ESC>(B <ESC>(J <ESC>(H □ C □ C ASCII , Ö □ Ø ' Ö , !

SI / SO , Í " F Ž ¯ , μ , Ü , ¹ , ñ □ B

□ i SHIFT-JIS □ " JIS , ì • ¶ Ž š f R [f h • i Š •

^ È % ° , ì f G f X f P [f v f V [f P f " f X , ð Ž g — p , μ , Ü , · □ B

<ESC>\$B □ C □ C □ C Š ž Š š , Ö □ Ø ' Ö , !
<ESC>(I □ C □ C □ C " ¼ Š p f J f i , Ö □ Ø ' Ö , !
<ESC>(B □ C □ C □ C ASCII , Ö □ Ø ' Ö , !

ŠčŽš,łftf@fCf<-¼,É,Â,¢,Ä

Šî-{"I,É,íAŠčŽš,łftf@fCf<-¼,đŽg,¤,±,Æ,Í,"Š©,ß,Â,«,Ü,¹,ñB

ftf@fCf<-¼,É,Ç,łŠčŽšfR□[fh,^aŽg,!,é,©□AfzfXfg,łŠÇ—□ŽÒ,É•,¢,Ä□A□³,μ,-
□Ý'è,μ,Ä,,¾,³,¢□B, ,é,¢,Í%°<L,ì•û-@,đ-Ú^À,É□Ý'è,μ,Ä,,¾,³,¢□B

fzfXfg,ÂŽg,!,É,¢ŠčŽšfR□[fh,đ□Ý'è,μ,Äftf@fCf<,đ□',«□ž,þ,Æ□A^È%°,ì,æ,¤,È-
â'è,^aN,±,éŽ-,^a, ,è,Ü,·□B

□œŠÔ^á,Â,½ftf@fCf<-¼,É,È,Â,Ä,μ,Ü,¤,±,Æ,^a, ,è,Ü,·□B
□œFTP,ì'€□ì,Â,ÍfAfNfZfX,Â,«,È,,È,Â,Ä,μ,Ü,¤,±,Æ,^a, ,è,Ü,·□B
□œftf@fCf<^ê——,^aê•",μ,©•Ž!,³,ê,È,¢□A—□,ê,é,È,Ç,ìœ»□Û,^aN,±,éŽ-,^a, ,è,Ü,·□B

ftf@fCf<-¼,łŠčŽšfR□[fh,í□\•^a,É'□^Ó,μ,Ä□Ý'è,μ,Ä,,¾,³,¢□B

□iUnixœEn,łfzfXfg,ì□ê□‡

EUC,^aŽg,!,é,©,à,μ,ê,Ü,¹,ñ□BŠù,ÉŠčŽš,łftf@fCf<-¼,łftf@fCf<,^a, ,é,Æ,«,Í□A,»,łftf@fC
f<-¼,^a□³,μ,•Ž!,³,ê,é,æ,¤,É□Ý'è,μ,Ä,,¾,³,¢□B
JIS,ÍŽg,!,É,¢,ÆŽv,¢,Ü,·□B

Unix,ÉSamba,đ"ü,ê,ÄWindows,©,çfAfNfZfX,Â,«,é,æ,¤,É,μ,Ä,¢,é,Æ,«,Í□ASamba-
HEX,©Samba-CAP,^aŽg,í,ê,Ä,¢,é,©,à,μ,ê,Ü,¹,ñ□B

EUC□**ASHIFT-JIS**□**AJIS**,ì,¢,,ê,àŽg,!,É,¢,Æ,«,Â,à□ASamba-CAP□i, ,é,¢,ÍSamba-
HEX□j,^aŽg,!,é,ÆŽv,¢,Ü,·□B,½,¾,μ□A,±
,łžž,ÍFFFTP□i,ÆSamba□j^ÈŠO,łf\ftfg,Â,Í□AŠčŽš,łftf@fCf<-¼,Æ,μ,Ä•Ž!,³,ê,Ü,¹,ñ□B

□iWindowsœEn,łfzfXfg,ì□ê□‡

FTPfT□[fof\ftfg,^a"ú-{œê,É'î%ž,μ,Ä,¢,é,È,ç,î□**ASHIFT-JIS**,^aŽg,!,é,©,à,μ,ê,Ü,¹,ñ□B
EUC□**AJIS**□ASamba-HEX□ASamba-CAP,Í□Ý'è,μ,È,¢,Â,,¾,³,¢□B

f p f X f □ □ [f h, ð ž æ, è ^ μ, ϕ, É, Â, ϕ, Ä

Windows 98, Me, Å □ A f }

f < f ^ f + □ [f U Š Â «, Å • i □ ”, ð □ l, a “ □ , ¶, o, b, ð ž g, ρ ž ž □ A *f p f X f* □ □ [f h, í f z f X f g, ð □ Ý ’ è, É □ ‘, « □ ž, Ü, È, ϕ ž —, ð, Š ©, ß, μ, Ü, . □ B Windows NT, Å, à l N I f t f @ f C f <, ð ž g, ρ, æ, ρ, É □ Ý ’ è, μ, Ä, ϕ, é ž ž, í “ □ , ¶, Å, . □ B

f z f X f g, ð □ Ý ’ è, Å *f p f X f* □ □ [f h, ð “ ü — í, μ, È, ϕ, Ü, Ü, É, μ, Ä, “, „, Æ □ A □ Ú ‘ ± ž ž, É *f p f X f* □ □ [f h, ð “ ü — í, ð < □, ß, Ä, «, Ü, . □ B

FFFTP, í f v f □ f O f % f € , ð f \ □ [f X f R □ [f h, à Æ ö Š J, μ, Ä, ϕ, é, ð, Å □ A f v f □ f O f % f € , ð “ Ç, ß, é □ l, É □ A • Ů ‘ ¶ , ³ ê, ½ *f p f X f* □ □ [f h, ð % ð “ Ç, ³ ê, é % Â ” \ □ «, a , , è, Ü, . □ B

jre32.dll,É,Â,¢,Ä

jre32.dll ,Í□AŽR“c~a•vŽ□,ì,“□ì,è,É,È,Á,½□A□³«K•\Œ»ŒŸ□ō,ō□s,¤,½,ß,ìDLL,Å,·□B,±
,ìftf@fCf<,Í fftp.exe ,Æ“¯,¶fffBfŒfNfgfŠ,É“ü,ê,Ä,“,¢,Ä,,¾,¾,¢□B

,±,ìftf@fCf<,ª—³,¢□ê□‡,Í□AŒŸ□ō,â'!'ö,Å□³«K•\Œ»□Af□fCf<fhfJ□[fh,öŽg,¤,±
,Æ,Í,Å,«,Ü,¹,ñ□B

*f*o□[*f*W*f*‡*f*“*f*A*f*b*f*v,É,Â,¢,Ä

ŒÃ,¢fo□[*f*W*f*‡*f*“,)FFFTP,^a*f*C*f*“*f*X*f*g□[*f*<,³,ê,Ä,¢
,é*f*t*f*H*f*<*f*_,É□A□ã□‘,«,Å*f*C*f*“*f*X*f*g□[*f*<,μ,Ä,¾,³,¢□BŽ–‘O,É*f*A*f*“*f*C*f*“*f*X*f*g□[*f*<.,é•K—
v,í, ,è,Ü,¹,ñ□B

fAf“fCf“fXfg□[f<,É,Â,¢,Ä

fRf“fgf□□[f<fpf|f<,ì□ufAfvfŠfP□[fVf‡f“,ì'Ç%Á,Æ□í□œ□v,ǒŽg,Á,ÄfAf“fCf“fXfg
□[f<,μ,Ä,,¾,³,¢□B

§

œ,e,e,e,s,o,ÍftfŠ[[]Ef\ftfgfEfGfA,Å,·BÆÂIŽg—pA<Æ—±Žg—p,ÉŠÖ,í,ç,Ž©—
R,ÉŽg—p,μ,Ä,©,Ü,¢,Ü,¹,ñB

œFFFFTP,ì“®ì,É•K—v,Èftf@fCf<,ªŠÜ,Ü,ê,¹/₂Æ`,Å, ,ê,ÎAŽ©—
R,É•i□»,μ□A”Đ•z,μ,Ä,©,Ü,¢,Ü,¹,ñB

œf\ftfgfEfGfA,Í□\•ª,ÉfefXfg,ð,μ,Ä,¢,Ü,·,^a□A,`Žg,¢
,ìfpf\fRf“ŠÂ««,â□Afvf□fOf%of€,ì•s<ĩ□‡,È,Ç,É,æ,Ä,Ä—â‘è,^a□¶,¶,é□ê□‡,^a ,è,Ü,·□B—
œ,^aê‘¹ŠQ,^a□¶,¶,Ä,à□A‘¹ŠQ,É‘Î,·,é•Û□Ø,Í□o—^,©,Ë,Ü,·,ì,Å□A,²—¹□³,,³/₄,³,¢□B

~ìÆ ,Í,r,□,“,□□i’]“c),É, ,è,Ü,·□B
fEfGfufy□[fW,à,²——,,³/₄,³,¢□B
<http://www2.biglobe.ne.jp/~sota/>

šjre32.dll,Í□AŽR“c~a•vŽ□,^a□ì,ç,ê,¹/₂□³<K•\Æ»Æÿ□ðDLL,Å,·□B

š,±,ìfwf<fvftf@fCf<,Í”~—Ø‘×□GŽ□,^a□ì,ç,ê,¹/₂**HelpCard**,ðŽg—p,μ,Ä□ì□¬,μ,Ü,μ,¹/₂□B

šFFFFTP,ìfefXfg,ì,¹/₂,ß,É**Linux**,ÆŠeŽíFTPD,ðŽg—p,μ,Ü,μ,¹/₂□B

“Á'è,ìŽg—pŽÒ,¾,¯,Å,È,□A^ê”Ê,É□L,ŒöŠJ,³,ê,Ä,¢,éFTP,ìfzfXfg,Å,·□B
,±,ì,æ,¤,ÈfzfXfg,É□Ú'±,·,éŽž,É,Í□AfpfXf□□[fh,Æ,μ,Äf□□[f<fAfhfŒfX,ð
“ü—Í,·,é,±,Æ,É,È,Á,Ä,¢,Ü,·□B

ŠčŽš,ì•¶ŽšfR□[fh,đ16□i□",Å•\Œ»,.•é•û–@,Å,.□B
"~e" ,í ":98:65" ,ì,æ,ꝥ,É,È,è,Ü,.□B"a~eb" ,í "a:98:65b" ,Æ,È,è,Ü,.□B

•¶ŽšfR□[fh,ì0x80^È□ã,ì•”•ª,đ16□i□”,Å•\Œ»,. ,é•û–@,Å,.□B
"~e" ,í ":98e" ,ì,æ,ª,É,È,è,Ü,.□B"a~eb" ,í "a:98eb" ,Æ,È,è,Ü,.□B

Windows, ĩ<¤—LffBfŒfNfgfŠ□^fvfŠf“f^,Æ““™, ĩ<@”\
,đUnixfT□[fo,ÉŽ□,½,¹,éf\ftfg,Å,·□B

f\□[fg

□if\□[fgfEfCf“fhfE,É,æ,é□Ý'è

f□□[fJf<'α□AfŠf,□[fg'α,»,ê,¼,ê,ìftf@fCf<^ê——,ìf\□[fg•û-@,ð□Ý'è,μ,Ü,·□B



□æftf@fCf<,í□Aftf@fCf<-¼□‡□AŠg'£Žq□‡□iŽí—

p□‡□j□AftfCfY□‡□A“ú•t□‡,ì,¢,,ê,©,Åf\□[fg,Å,«,Ü,·□B,Ü,½□A□‡□~,ðt□‡,É,·,é,±,Æ,^a,Å,«,Ü,·□B

□æftfHf<f_,í□AftfHf<f_-¼□‡□A“ú•t□‡,ì,¢

,,ê,©,Åf\□[fg,Å,«,Ü,·□B□‡□~,ðt□‡,É,·,é,±,Æ,^a,Å,«,Ü,·□B

□æ^ê——%æ—

É,É,í□AftfHf<f_□Aftf@fCf<□Afhf%□fCfu□ifhf%□fCfu,íf□□[fJf<'α,ì,Ý□j,ì□‡□~,É,É,è,Ü,·□B

□ifzfXfg,²,Æ,Éf\□[fg,ì•û-@,ð<L%~,·,é

f\□[fg,ì•û-@,ðzfXfg,²,Æ,É<L%~,μ,Ü,·□B

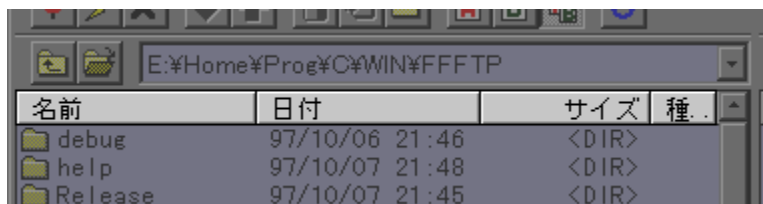
fzfXfg,É□Ú'±†,É□Af\□[fgfEfCf“fhfE,Ü,½,ìftf@fCf<^ê——

f^fu,ðfNfŠfbfN,μ,Åf\□[fg•û-@,ð•ì□X,μ,Å,,¾,³,¢□BŽŸ%ñ□Ú'±Žž,É□A,»,ì□ó'Ô,É-ß,è,Ü,·□B

□iftf@fCf<^ê——%æ-Ê,ìf^fu,É,æ,é□Ý'è

ftf@fCf<^ê——%æ-Ê,ì^{f^fu},ðfNfŠfbfN,·,é,±

,Æ,É,æ,Å,À,f\□[fg□‡□~,ð•ì□X,Å,«,Ü,·□B

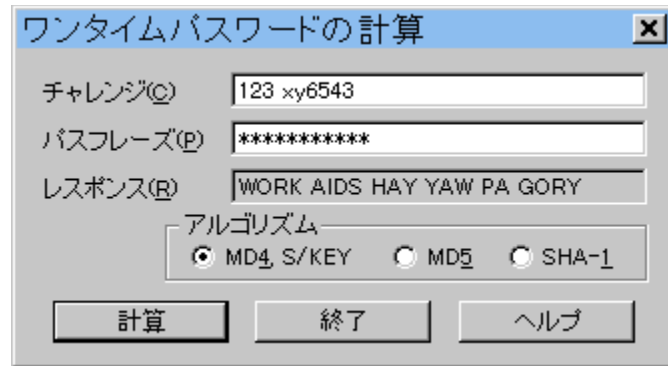


fzfXfg,²,Æ,Éf\□[fg,ì•û-@,ðL%_—,;é,^a□Ý'è,³ê,Ä,¢,È,¢□ê□‡□A,±,ì•û-
@,Å'l,ñ,¾f\□[fg•û-@,Í□A•Û'¶,³ê,Ü,¹ñ□B□Ý'è,ð•Û'¶,μ,¹/₂,¢
,Æ,«,Í□Af\□[fgfEfCf“fhfE,Å□Ý'è,μ,Ä,,¾,³,¢□B

$f \square f^{\wedge} f C f \epsilon f p f X f \square \square [f h, \grave{\text{I}} \epsilon v \check{Z} Z$

$f^{\wedge} f f f \epsilon f^{\wedge} f W, \epsilon f p f X f t f \epsilon \square [f Y, \delta \epsilon^3, \acute{\text{E}} \square A f \square f^{\wedge} f C f \epsilon f p f X f \square \square [f h, \delta \epsilon \square, \beta, \acute{\text{e}}, \pm$
 $, \epsilon, \text{^a}, \text{^A}, \ll, \ddot{\text{U}}, \cdot \square B f \square f^{\wedge} f C f \epsilon f p f X f \square \square [f h, \grave{\text{I}} f V \square [f P f^{\wedge} f X, \delta \square Y^{\text{e}}, \cdot, \acute{\text{e}} \square \acute{\text{e}} \square \ddot{\text{z}}, \acute{\text{E}}, \text{^C}, \acute{\text{E}}, \text{^2} \text{---} \text{---} p, -$
 $, \text{^3}_4, \text{^3}, \text{^C} \square B$

$\square \text{!} F F F T P, \text{^A} f z f X f g, \acute{\text{E}} \square \acute{\text{U}}^{\text{t}} \pm$
 $, \cdot, \acute{\text{e}} \square \acute{\text{U}}, \text{^I} F F F T P, \text{^a} \check{Z} \text{^C} \text{^@} \text{^I}, \acute{\text{E}} f \square f^{\wedge} f C f \epsilon f p f X f \square \square [f h, \delta \epsilon v \check{Z} Z, \cdot, \acute{\text{e}}, \grave{\text{I}}, \text{^A} \square A, \pm$
 $, \grave{\text{I}} f c \square [f \text{^<}, \text{^A} \epsilon v \check{Z} Z, \cdot, \acute{\text{e}} \bullet K \text{---} v, \acute{\text{I}}, \cdot, \acute{\text{e}}, \ddot{\text{U}}, \text{^1}, \check{\text{n}} \square B$



$\square i f^{\wedge} f f f \epsilon f^{\wedge} f W$

$f V \square [f P f^{\wedge} f X^{\text{^O}} \square \text{^t}, \epsilon f V \square [f h, \delta f X f y \square [f X, \text{^A} \text{^<} \epsilon \square \emptyset, \acute{\text{A}}, \text{^A} \text{^u} \text{---} \acute{\text{I}}, \mu, \text{^A}, \cdot, \text{^3}_4, \text{^3}, \text{^C} \square B$

$\text{---} \acute{\text{a}} \square j \text{ } 123 \text{ } xy3456$

$\square i f p f X f t f \epsilon \square [f Y$

$f p f X f t f \epsilon \square [f Y, \delta^{\text{^u}} \text{---} \acute{\text{I}}, \mu, \text{^A}, \cdot, \text{^3}_4, \text{^3}, \text{^C} \square B$

$\square i f \epsilon f X f \text{^I} f^{\wedge} f X$

$f^{\wedge} f f f \epsilon f^{\wedge} f W, \epsilon f p f X f t f \epsilon \square [f Y, \delta, \grave{\text{a}}, \epsilon, \acute{\text{E}} \epsilon v \check{Z} Z, \mu, \text{^1}_2 f \square f^{\wedge} f C f \epsilon f p f X f \square \square [f h, \text{^A}, \cdot \square B$

$\square i f A f \text{^<} f S f \check{S} f Y f \epsilon$

$\check{Z} g \text{---} p, \cdot, \acute{\text{e}} f A f \text{^<} f S f \check{S} f Y f \epsilon, \delta^{\text{^I}}, \check{\text{n}}, \text{^A}, \cdot, \text{^3}_4, \text{^3}, \text{^C} \square B$

