

Album

An album is a collection of SSEYO Koan pieces. The pieces could be your favourites or a collection you have bought from another artist, already conveniently supplied as an album. When you buy a preconfigured album it comes with its own notes which you can read in the Viewer Module. You can also add your own notes to your own albums, allowing you to jot down things you feel when you listen to its pieces.

Opening an album takes a few seconds as each piece that is in the album must be read into memory before the album is ready to play. Only the currently playing piece, however, is currently held in RAM once the album is fully loaded.

The album file has the .SKA extension. Albums can include SSEYO Koan pieces with the .SKD or .SKP format or MIDI files.

Piece

'Piece', 'track', 'song' and 'soundscape' are all terms used by people to describe the music created by SSEYO Koan when it 'plays' the special file that is generated by SSEYO Koan Pro (the big brother of SSEYO Koan Plus) When the file is plugged into the SSEYO Koan Music Engine (what we refer to as the software technology behind the SSEYO Koan range of products) it generates the beautiful music that ensues. The piece file can either have the extension .SKP (encrypted) or .SKD (SSEYO Koan Pro development file).

Encryption

Pieces written in SSEYO Koan Pro can be encrypted so that others can not read them, offering a higher level of protection to those who spend time creating polished works. Encrypted files have the file extension .SKP (SSEYO Koan Play files). SKP files can be played by SSEYO Koan Plus as well as the non-encrypted .SKD files generated by SSEYO Koan Pro (SSEYO Koan Design files). SKP files cannot be played by SSEYO Koan Pro.

Parameters

Parameters are the various types of variables SSEYO Koan uses to control its output.

Envelopes

Envelopes are a graphical way of displaying the way a parameter changes over time; they are analogous to a 'bar chart' in that the height of the bar is in direct proportion to the value of the parameter: the higher the bar the greater the value. These can only be seen in SSEYO Koan Pro.

Instrument

This can be any of the General MIDI patch numbers (including capital series i.e. 125.6) and these are identified by their patch number i.e. 098 FX2. We currently support the standard drum set, and these sounds are identified as the patch number preceded by a D, i.e. D60. You can assign any number of instruments to a voice, more about that later.

Voice

A voice in Koan terminology is a 'player', and each player is assigned an instrument. You can have as many voices defined as you want. Your sound card/synth provides the only real limitation on how many can play at once. You can label each voice (to identify them) with any name you want; in the demos the names are mostly the instrument type. This is handy when you want to use different samples on an external synth/sampler.

General MIDI

General MIDI is a standard adopted by many manufacturers where there are 128 patches which have pre-defined numbers. This allows MIDI files to sound roughly the same when they are played back, no matter what General MIDI soundcard/ synth is used to play them on. For instance, patch no 19 will always be a Rock Organ sound (or nearest equivalent) no matter what the card.

Note: Some cards do not actually provide the full complement of 128 sounds, in which case the manufacturer will generally provide a MIDI Mapper patch map which diverts those patch numbers to their nearest equivalent.

Module

SSEYO Koan Plus uses a number of stackable modules, rather like a Hi Fi system. Each module provides extra ways of viewing or hearing Koan music and each one can be hidden or made visible as required. There are 4 modules in SSEYO Koan Plus; the Main Control module; Player module; Viewer module and Analyser module.



"SSEYO - the world leader in computer assisted ambient musics (CAAM)"

SSEYO (pronounced SAY-OH) was established to respond to the ever increasing demand for quality of life and personal fulfillment. If you want to know more about the company or its products, have any ideas as to what you would like us to develop next or suggestions as to how we may improve our products, please do contact us at the address below:

**SSEYO Ltd
P.O. Box 29
Beaconsfield
Bucks
HP9 1EB
UK**

Sales and general information:

Internet: koaninfo@sseyo.com
WWW: <http://www.sseyo.com>

CompuServe: GO SSEYO

Tel: +44 (0) 1494 671257
(9:00am to 4:00pm GMT Monday to Friday, excluding holidays)

Fax: +44 (0) 1494 671258

Trademarks

SSEYO, Koan and the SSEYO logo are registered trademarks of SSEYO Ltd in the UK and are trademarks in other countries. Other products mentioned may be trademarks or registered trademarks of their respective companies and are the sole property of their respective manufacturers.

World Wide Web

An inter-connected series of electronic pathways, allowing you to access information on computers all over the world via the POTS system (Plain Old Telephone System). You need a modem and an Email account with one of the network service providers. SSEYO Koan pieces can be downloaded over the WWW and played by SSEYO Koan Plus **while you are online**.

With a 28800 modem you can typically download a 20Kb Koan piece (an average file size) in 6 seconds - SSEYO Koan Plus will then start playing it immediately. One of the main advantages of SSEYO Koan technology for net use is that the piece you download would only be a few Kb in size yet it could play beautiful music for many hours. Koan file sizes typically range from around 1.5Kb to 20Kb.

Dont forget that any files you place on your website are covered by copyright (the right to copy - see Copyright discussion) and likewise any files you download, too!! If you want to put someone elses Koan files on your website you need their permission (as you will have copied them).

Check out our web site for the latest demos, files and links (also see the Connect to the SSEYO Web Page menu option):

WWW: <http://www.sseyo.com>

CompuServe® forum

Purchasing SSEYO Koan Plus or SSEYO Koan Pro will enable you to get a FREE Membership to CompuServe, some details are given below:

Get valuable SSEYO support around the clock on CompuServe

CompuServe gives you a direct connection to our technical support team and easy access to the most current updates. To access the SSEYO Section of the Multimedia A Vendor Forum, click on the **GO** button of the CompuServe Information Manager software (see Membership below) and enter **SSEYO**. There you will gain valuable information on all our products, as well as late-breaking news on soon-to-be and newly released products.

- **Stay in touch 24hrs a day.**
Post your messages for us and share your views and knowledge with others. Catch the latest Press Releases and information on our products
- **Get product demos and download files.**
We will always have the latest versions of demos of our products here in the Library. You will also find many demo pieces and we encourage you to make your own submissions - who knows, you might even get famous in our Forum section!
- **Talk to support experts.**
There is no better place to get support on our products!
- **Provide product feedback.**
Tell us what you want to see in our products. What do you like most about them? What could be better? What other services could we offer you? We always want to know!

So what exactly is CompuServe?

CompuServe is the information service world-renowned for its computer support and electronic camaraderie. Join CompuServe and join millions of other members who have around-the-clock access to over 2000 products and services, including over 850 hardware and software companies.

Now you can ask questions, share ideas and get important information about SSEYO products via CompuServe, the world's premier online information service.

Interested in upgrades? Don't miss out on important news about product enhancements, as well as details on ordering upgrades.

CompuServe puts the world at your fingertips.

Of course there's always more to choose from on the information service you won't outgrow. And CompuServe is always ready. Around the clock and around the world. CompuServe offers more local access connections than any other service, including 14.4 BPS connections in most major cities.

More than information, CompuServe is your connection to a network of personal computer users in over 150 countries. You'll find CompuServe members with interests just like yours exchanging information and ideas around the clock and around the world.

Interconnect to the Internet and electronic mail systems, fax machines and postal mailing addresses everywhere. Shop a mall that never closes. Search exhaustive reference libraries in minutes. Find the best fares and book your trips with the same systems used by travel agents worldwide.

Get a FREE Membership to CompuServe...

As a valued SSEYO customer, you would be entitled to a **FREE** CompuServe Membership, including:

- One free month of Membership (a \$9.95 value)
- An additional 5 hours free in your first month
- CompuServe Information Manager (CIM) software (for Windows or Mac)
- A complementary subscription to CompuServe's monthly magazine
- A personal User ID number and private electronic mailbox
- Access to popular internet services.

GO SSEYO. We look forward to meeting you.

Introducing Koan Plus

Welcome to SSEYO® Koan™ Plus.

SSEYO Koan Plus is a revolutionary and trendsetting new addition to your desktop. You can use it to download and play music over the World Wide Web (WWW) or as a standalone Koan Music player on your PC. SSEYO Koan Plus is the only application you need play the encrypted SSEYO Koan Play files (SKP) generated by SSEYO Koan Pro.

Beautiful ever-changing Ambient **mood music** is now possible on YOUR own PC.....
.....your PC need never sound the same again. .

SSEYO Koan Music Engine(SKME)

All pieces played by SSEYO Koan Plus (and which have been created with SSEYO Koan Pro) are interpreted and composed in real time by the SSEYO Koan Music Engine (or SKME, pronounced 'SCHEME' or 'SKEEM'), which then sends out MIDI information to your soundcard or sound module. Whenever a piece is played it can be slightly different - like a musical kaleidoscope. SSEYO Koan music can also sound very natural and expressive and each piece tends to have its own character. The SKME has been designed to be flexible and so does not limit itself to pre-defined, style-based music, making it ideal for ambient music of all genres. Also, because a pieces' musical output can be different every time, it provides a higher level of originality and interest than MIDI files, whose output is always the same. A similar situation will one day apply to CD Audio tracks, too, when soundcards that support uploading of samples will proliferate...

'Zentertainment'... great. What is it?

The music you hear with SSEYO Koan Plus is ideally matched to the new forms of software - or 'Zen Ware', - now appearing on the market. We like to use the term Zentertainment for the music created by SSEYO Koan Pro, because as well as creating relaxing and reflective musical material it can also be used to produce exciting techno music. Because the music is always different it requires an intuitive response from you, helping you to 'surf' with more freedom and instant appreciation.

Since you can also play along with SSEYO Koan Plus too (you will need a MIDI music keyboard or similar device for this), you can create your own atmospheres and have real fun doing it. You just play -- and the SKME will harmonize with what you are playing, subtly of course. You can even record the resulting 'mix' to a MIDI file for later manipulation or enhancement in a sequencer.

'Koan' itself is a Japanese Zen word which means a puzzle or mystery with no logical solution. There is a famous Koan: if you clap two hands together you get the sound of two hands clapping. What is the sound of one hand clapping? Our music is well suited to this description, as it never repeats itself (unless specifically requested to do so) and so it is never wholly quantifiable: it is like an endless stream.

Where you might hear it....

SSEYO Koan Plus's ambient output (or MIDI file recordings of it) could be used in any number of situations and in all manner of places, e.g. on your own computer, Multimedia projects, aurally-enhanced screensavers, film and video tracks, adding spice to presentations or simply used as a relaxing non-intrusive background - you name it (refer to discussion on copyright).

We also have an Application Programming Interface (API) available for the SKME for developers who wish to include it in their own applications. You might therefore hear it included in software games or multimedia titles.

Remember, SSEYO Koan music is not muzak, which is a rendition of a song people already know and

love: SSEYO Koan music is always fresh and different. Perhaps the closest analogy to the SSEYO Koan products is that of an Aeolian harp, where the wind 'plucks' its strings in an uncertain and changing manner, thus producing quite 'ethereal' music. Or think of it the aural equivalent of a glowing, burning log fire. SSEYO Koan music can be ethereal or more down to earth.

SSEYO Koan Pro is the authoring system used to create the pieces that you can play with SSEYO Koan Plus, more details are provided in the Koan Plus help file.

Music as we know it is changing

Good music has traditionally been thought of as being pre-composed and completely pre-defined. Not so with SSEYO Koan music, which is realized for you as you create it or listen to it, and because of its novel design it can ebb and flow in many beautiful ways.

How 'computer' music was made in the past

The most commonly-used method to create 'generated' or auto-composition music was developed by Mozart. He created a system of automatic composition which used a fairly large set of generally short musical phrases of a fixed length. He would roll dice to determine in which order he should string them together. The result was generally quite reasonable, but fairly limited in expression.

What SSEYO has developed for you

The SSEYO Koan Music Engine (SKME) can use nearly 150 specially-designed variable controls to influence and produce its music *as it composes*. The values you input to these controls (with SSEYO Koan Pro), some of which are time dependent, are written into a SSEYO Koan 'piece' (SSEYO Koan Design file - .SKD). They determine the notes and melodies generated when you play the piece through the SKME. It is these very controls that influence the creation of music that is smooth, non-intrusive, and natural-sounding. But, the SKME's real power is that it composes and harmonizes everything in real time according to your selections. And because you can still use the 'roll the dice' technique (i.e. for selecting music patterns), you can create pieces which span the complete range - from simple old-style 'roll the dice' constructions to completely free-wheeling, ever-changing atmospheric productions.

Because of the way the SKME has been written, pieces of considerable length can be created in SSEYO Koan Pro (currently up to 9 hours). For instance, you could create three pieces that could each play for eight hours, providing you with round the clock music with appropriate changes to accommodate the time of day.

SSEYO Koan Plus is easy and fun to use

The real beauty of SSEYO Koan Plus is that it is so fun to play with. Not only fun to use, but easy to use too. The standard Windows user interface that you see whenever you use a Windows type program means that you don't have to guess where to find everything, as you would in a old DOS type program.

We have provided special LED displays to show you how the music is changing as it plays; these show you the general frequency spread of the notes being played together with the MIDI channel output, for those more technically inclined. They can be quite mesmerizing to look at.

There is also a comprehensive easy to understand on-line help system talking you through everything you need to know together with Quick Tutorial to get you started ([click here to go to it now](#)).

SSEYO Koan Plus's uses

Your SSEYO Koan Plus pieces can be used in so many places to provide a comfortable atmosphere. Places like waiting areas, receptions, swimming pools, museums, art galleries, homes, greenhouses, kennels and yes, even elevators!! We all know that people are not generally fond of Muzak. This is

often because it is a poor rendition of a song they know and love and because often the same song plays again and again. Because SSEYO Koan Plus does not reproduce music or songs already recorded, and it does not repeat in this way, it has a more soothing and relaxing effect on people.

Because of the way SSEYO Koan Pro has been written, pieces of considerable length can be created for SSEYO Koan Plus. For instance, a piece could be created that could play for 24hrs all the while changing instruments and parameters throughout this period. This piece could respond to the different times of day, being quiet and still in the morning and get louder and more complex by lunch time, say.

SSEYO Koan Plus and General MIDI

As SSEYO Koan Plus supports General MIDI your piece will have access to many special effects and ways of manipulating sounds if your sound card supports General MIDI too.

Copyright, licensing and ownership discussion

Important: *SSEYO provides no warranties whatsoever as to the accuracy or legality of the statements provided below. We recommend you should consult your lawyer should you have any doubt about your ownership of Copyright on recordings you may make. See also the software license.*

Copyright

We are keen to bring to the multimedia market a way of creating good quality music that is copyright free, but copyright law is a very complex area. Computer generated music is currently a hot topic in Copyright circles and there are no real precedents set either way. The wording of the UK Copyright, Designs and Patents Act 1988 states that the owner of a copyright in a musical work is the person that created it, whereas this contrasts with computer generated musical works where the owner of the copyright in the work is the person by whom the arrangements necessary for the creation of the work are undertaken. In our efforts to bring about copyright free music we have designed SSEYO Koan Pro so that we allow the author of a SSEYO Koan file/ piece - i.e. the .SKD, .SKT, .SKP or any other file it might be possible for it to generate in the future - to state explicitly what rights they are prepared to relinquish.

The originator of a SSEYO Koan file/piece is the owner of the copyright on that piece. Just as a Record Company can sell you a record or CD on which their artist's song is recorded, the originator of a SSEYO Koan file can provide a floppy disk containing their own file/piece(s). Although you DO own the record or floppy disk once you have purchased it, you DO NOT own the actual song or file itself; nor (for an audio recording) do you own the recording of that song: in effect YOU are purchasing a license to use or listen to that particular song or SSEYO Koan's interpretation of the file YOURSELF. The SSEYO Koan file is a literary work and so enjoys the full protection of International Copyright law. Licensing software for use is the normal situation for software, and the originator of the software is the copyright holder under International Copyright law.

Note: The reason a person has to pay the Performing Rights Society a fee when playing pre-recorded music in public is that a large number of people are listening to it, and not just you.

MIDI file recordings of SSEYO Koan output

So, purchasing a floppy disk containing a SSEYO Koan file does not mean that you then own the copyright to it and, because you don't own it, you are not allowed to make copies of that file and resell these copies (but as with a CD you are allowed to make a 'backup' copy for your own personal use). However, because the SSEYO Koan output can be different each time a file is played (dependent on how the author has set up the piece), you can make a 'master' audio or MIDI file recording of it each time it plays which no one else will probably ever be able to make (subject to the limits of our random number generator), so you can 'own' the copyright on that recording.

Note: The situation may be unclear on who would own the copyright on recordings of a piece that contained recognizable musical fragments of another artist's work. This could occur if the author of a SSEYO Koan piece included musical 'seed' phrases (patterns) that were the copyright of another artist. There are also further complications of MIDI file recordings of computer generated music on which we are seeking legal advice.

What is the benefit of this to you?

We believe it means you can use 'ROYALTY FREE' (because you own the copyright) any MIDI file or audio recording you have made of any Koan piece (subject to the original author giving consent by relinquishing any present or future rights to or title they may have to all MIDI file or other recordings of their pieces, and this is an option to which they agree or not) for any use or application you may desire. **The only requirement is that you note somewhere prominently in your application, accompanying documentation or materials that the music was created by SSEYO Koan software and you give the original authors name, i.e. Original music A. Gnu Piece was written by A. Gnu Artist and created and played by SSEYO Koan software.**

If you are the originator of a SSEYO Koan file then, as stated, you **may** not have any claim to copyright on the `output`, but you may record one or many instances of that output and you own the copyright to that (those) specific recording(s).

Live output from the SKME

Where the SKME is composing music in real time, we call this `live` use (see below). Our standard license (the one that comes with this package) allows you to use the product for personal use where the Software is `in use` on a computer when it is loaded into the temporary memory or installed in the permanent memory of that computer.. However, we specifically preclude use of this software in an unattended mode of operation for any purpose whatsoever, other than for personal use (by attended use we mean you as an individual are controlling it, interacting with it or playing it). We also preclude use for public broadcast (please see the license).

This means you can use SSEYO Koan products for all your daily personal requirements whatever they may be. But, if you want to use any SSEYO Koan product in an unattended form (i.e. no-one is regularly attending it) for non-personal use (i.e. company or business) you will need a special license from us.

Note: Play back of MIDI files created earlier by the SKME are simply recordings of the SKME and are not composed in real time, so for live use you can use them as you please, subject to the discussion earlier.

Examples:

Use covered by standard license

Live attended use

Personal

SSEYO Koan personal background music on your work/ home computer
Creating your own SSEYO Koan pieces

Yes
Yes

Non-personal (i.e. used by or for business)

Presentations with SSEYO Koan background (loaded with presentation)
Live use at gigs, DJ work, performances

Yes
Yes

Live unattended use

Personal

Let your pets listen to it all day long!
Put it in your greenhouse for the plants!
Wake up to it in the morning
General music around the house

Yes
Yes
Yes
Yes

Non-personal (i.e. used by or for business)

Sending out Product Demo disks with SSEYO Koan music
SSEYO Koan music for telephone hold systems
SSEYO Koan music for hotel foyers, reception rooms, lobbies, rest areas
SSEYO Koan music for environmental control systems (buildings etc.)
SSEYO Koan music for broadcast (radio stations/ in flight rest music etc.)

No
No
No
No
No

SSEYO would be pleased to discuss our licensing terms with you for Unattended, non-personal use, as outlined above.

SSEYO Koan Pro



SSEYO Koan Pro is the sophisticated Authoring System provided by SSEYO to create the pieces that you can play in SSEYO Koan Plus. There is a demo version of SSEYO Koan Pro and you can find this on our web site (see below for details).

Nearly 150 parameters to shape your musical pieces:

- Up to 50 separate voices (soundcard dependent)
- Rhythm templates and demo pieces provided
- Separate windows for Power, Voice X, Rules and Piece level parameter views
- 5 different voicetypes: Ambient, Rhythmic, FixedPattern, Follows or RepeatBar. Use Follows voices to 'follow' another, allowing easy counterpoint; use RepeatBar voices to repeat material from earlier bars; use Ambient voices to create notes with durations in milliseconds, seconds or fractions of a beat
- 4 music rule types: Scale, Harmony, Next Note and Rhythm
- Envelopes to control Volumes, Pans, Velocities, and Tempo
- Controllers for Reverb/ Chorus/ Portamento/Sostenuto/Expression/ Damper/ Softness
- Support for GS/GM patches
- Creative Labs AWE32: Define in your piece and auto-load multiple Creative Labs AWE32 SoundFont™ compatible banks from any directory location (could be a CD ROM on your D: drive for instance). Controllers for all 25 EMU8000 LFOs, Oscillators and Envelopes on the AWE32.
- Gravis Ultrasound/ Ultrasound MAX: Define in your piece and auto-load Gravis Technology patch banks from any single directory location (could be a CD ROM on your D: drive for instance).
- Roland SCC1: Controllers for Attack/Decay/Release
- Import MIDI files & record your SSEYO Koan piece output to a type 0 MIDI file
- Random patch changing as a voice is playing
- Mutation of phrases
- Micro-level controls for real time, subtle random changing of a voice's volume, pitch, start time and modulation
- Support for WAV files, stored externally or even used from a CD ROM
- Lists of values for every parameter
- Create encrypted .SKP demo pieces that will stop playing after a pre-determined time (allowing you to create and send out demos of your work, to be played with SSEYO Koan Plus Demo); add pieces notes for others to see when they load your pieces
- Extensive mouse and keyboard support
- Comprehensive online help system

Each of the pieces it creates contains a number of voices, and each voice plays an instrument. The sound and output of each voice is controlled by a number of parameters which can be given envelope values so that they vary in a controllable and predetermined way over the life of the piece. The notes that each Voice plays are governed by various rules as well.

Should you want further details please contact SSEYO directly at:

SSEYO Ltd
P.O. Box 29
Beaconsfield
Bucks
HP9 1EB
UK

Sales and general information:

Internet: koaninfo@sseyo.com
WWW: http://www.sseyo.com

CompuServe: GO SSEYO

Tel: +44 (0) 1494 671257
(9:00am to 4:00pm GMT Monday to Friday, excluding holidays)

Fax: +44 (0) 1494 671258

or, contact one of our distributors given in the accompanying README.TXT file or documentation.

SSEYO Koan Plus Demo

SSEYO Koan Plus Demo is a slightly cut down version of SSEYO Koan Plus. It is only to be used for demonstrating and evaluating what SSEYO Koan Plus can do. You can always download the latest version of the Koan Plus Demo from our [website](#).

SSEYO Koan Plus Demo has the following limitations over [SSEYO Koan Plus](#):

- No MIDI file save
- No editing or saving of albums
- Plays for 5 minutes before you get a message telling you it will stop playing in another 5 minutes. When those 5 minutes are up it will then stop playing. You can restart it by pressing play.
- Only 5 sample pieces, each having a shortened play time
- You will not be able to save any of your settings, such as; whether the modules are open/closed (it will always open with the modules open); Volume, Pan, Reverb and Chorus settings; Always on top; Menu bar visible/not visible.

If you purchase [SSEYO Koan Pro](#) you may create some fantastic pieces you want to sell to or share with others (or you are really excited about the Koan technology taking the world by storm, as are we), and you now have something, SSEYO Koan Plus Demo, to send to them so they can hear it/ your files for themselves. We would really appreciate if you pass this around or load it up to various bulletin boards to which you may belong. If you do this, we make the proviso that you may only distribute a COMPLETE copy of the original SSEYO Koan Plus Demo disk (which contains all the necessary files for installation) or a zipped version of this disk (you can find this on our website) and you are not allowed to distribute any of the demo files/ album that come with the full (not demo) SSEYO Koan Pro or SSEYO Koan Plus packages. You can distribute your own pieces as you wish; in fact, you may wish to take advantage of SSEYO Koan Plus Demo's limited play time (see above). Or, you can use SSEYO Koan Pro to set the play time of any piece you write such that the piece stops playing before its scheduled time. This is useful for creating demo pieces which allow the listener to get a taste of the piece before they purchase it - a hear-before-you-buy approach.

Licensing

The SSEYO Koan Plus Demo license is substantially similar to the SSEYO Koan Plus license but contains the following main differences:

THE SSEYO KOAN PLUS DEMO LICENSE IS GRANTED FOR DEMONSTRATION PURPOSES ONLY

- You **may** distribute the SSEYO Koan Plus Demo software on a public bulletin board.
- You may distribute the SSEYO Koan Plus Demo software on CD ROM cover disks on various magazines *provided* we give you written authorization, which we may withhold for any reason.
- You **may not** distribute the SSEYO Koan Plus Demo software for any marketing purpose or to your commercial advantage.
- You **may not** distribute any of the SSEYO Koan files, Albums, MIDI files, SoundFont banks, patches, audio files or audio recordings that come with the SSEYO Koan Pro or SSEYO Koan Plus packages.

See also the software [license](#)

SSEYO Koan Plus V1.1



SSEYO Koan Plus V1.1 is the good looking front end that allows you to make albums of your pieces and then to play them back with various graphical displays (and has full implementations of the features modified for the demonstration version, [SSEYO Koan Plus Demo](#)). You can use it to download and play music over [the World Wide Web](#) (WWW) or as a standalone Koan Music player on your PC. SSEYO Koan Plus is the only application you need play the encrypted SSEYO Koan Play files ([SKP](#)) generated by SSEYO Koan Pro.

SSEYO Koan Plus V1.1 product currently comes with the following:

- A number of Koan pieces and album provided on a 3.5 HD floppy disk.
- 10 Studio mastered mood music tracks provided on **audio CD** - plus a bonus audio track.
- 12 page booklet and registration card.

The full (i.e. not demo) version of SSEYO Koan Plus also you to add/ edit albums, the pieces supplied with SSEYO Koan Plus will play for their full time (they have not been shortened as have the pieces that come with the SSEYO Koan Plus Demo software) and the software has no time cutout.

Should you want further details please contact SSEYO directly at:

SSEYO Ltd
P.O. Box 29
Beaconsfield
Bucks
HP9 1EB
UK

Internet: koaninfo@sseyo.com
WWW: <http://www.sseyo.com>

CompuServe: GO SSEYO

Tel: +44 (0) 1494 671257
(9:00am to 4:00pm GMT Monday to Friday, excluding holidays)

Fax: +44 (0) 1494 671258

or, contact one of our distributors given in the accompanying README.TXT file or documentation.

Support

Sorry, but no support is provided on the SSEYO Koan Plus Demo version, but check out our CompuServe forum section or our website.

See also
[SSEYO](#)

License Agreement

ATTENTION: THIS IS A LICENSE, NOT A SALE. THIS LICENSE IS GRANTED FOR DEMONSTRATION PURPOSES ONLY.

IMPORTANT NOTICE: CAREFULLY READ THIS LICENSE BEFORE USING THE SOFTWARE AND ACCOMPANYING DOCUMENTATION. BY USING THE SOFTWARE YOU ARE AGREEING TO ALL THE TERMS AND CONDITIONS OF THIS LICENSE AGREEMENT. IF YOU DO NOT ACCEPT THESE TERMS WE ARE UNWILLING TO LICENSE THE SOFTWARE TO YOU AND YOU SHOULD NOT USE THE SOFTWARE. IN SUCH CASE, YOU MAY, WITHIN FIFTEEN (15) DAYS, RETURN THE PRODUCT COMPLETE TOGETHER WITH PROOF OF PURCHASE TO THE PERSON FROM WHOM YOU ACQUIRED IT FOR A FULL REFUND.

SOFTWARE LICENSE AGREEMENT

A. You own only the media on which the Software or music is recorded. Like a music CD or LP, you own the physical copy, but not any rights to the recorded material. We continue to own the copy of the Software contained in this package and all other copies that you are authorised by this Agreement to make. This license gives you the non-exclusive, non-transferable right to use the Software on the following terms:

B. YOU MAY

1. Use one copy of the Software (and where the product may contain more than one copy of the Software, i.e. 16 bit version and 32 bit version, you may use only one copy) on any single computer, subject to the provisions below. The Software is 'in use' on a computer when it is loaded into the temporary memory or installed in the permanent memory of that computer.
2. May make one (1) backup copy of the Software, provided that you reproduce all copyright and other proprietary notices on the copy and the copy is kept in your possession with the original.
3. Distribute the Software on a public bulletin.
4. Distribute the Software on CD ROM cover disks on various magazines *provided* we give you written authorisation, which we may withhold for any reason.

C. YOU MAY NOT

1. Simultaneously use the Software on more than one computer at a time, regardless of whether such computer is a standalone unit, a portable unit or part of a computer network.
2. Rent, lend, lease, sell, transfer or grant any rights in the Software or accompanying documentation or distribute the Software for any marketing purpose or to your commercial advantage (except as allowed above).
3. Remove any copyright or other proprietary notices on the Software and accompanying documentation.
4. Modify, alter, translate or create derivative works based on the Software.
5. Copy (except as allowed above) the Software or the accompanying documentation.
6. Use any backup copy of the Software (or allow someone else to use such copy) for any purpose other than to replace the original copy in the event it is destroyed or becomes defective.
7. Reverse engineer, decompile, disassemble or otherwise attempt to derive the source code, except as local law may permit you to do so, notwithstanding such restrictions.
8. Use this software in a mode of operation where the Software is unattended by an operator for any purpose whatsoever, other than for personal use.
9. Use this software for any form of public broadcast or public performance.
10. Make MIDI file recordings of a SSEYO Koan piece where the original piece author has NOT authorized MIDI file recordings of their piece or claim rights to MIDI file recordings or other recordings of a SSEYO Koan piece where the author has not relinquished such rights.
11. Distribute any of the SSEYO Koan files, Albums, MIDI files, SoundFont banks, patches, audio files or audio recordings that come with the full versions of SSEYO Koan Pro or SSEYO Koan Plus.

D. LIMITED WARRANTY

THE SOFTWARE AND ACCOMPANYING DOCUMENTATION (EXCLUDING THE MEDIA ON WHICH THE SOFTWARE IS RECORDED) ARE LICENSED ON AN "AS IS" BASIS WITHOUT ANY WARRANTY WHATSOEVER. We warrant that the software media will be free from defects in materials and workmanship under normal use for a period of 90 days from date of purchase. If the media is defective, you may as your sole and exclusive remedy, send it to us during the warranty period by pre-paid postage to the address set forth below, together with a copy of your sales receipt, and we will send you replacement media.

THIS WARRANTY GIVES YOU SPECIFIC RIGHTS. DEPENDING ON LOCAL LAW, CERTAIN LIMITATIONS CONTAINED IN THIS WARRANTY MAY NOT APPLY TO YOU OR YOU MAY HAVE OTHER RIGHTS, SO BE SURE TO CHECK. THIS WARRANTY IS GIVEN IN LIEU OF ALL WARRANTIES, CONDITIONS, TERMS, UNDERTAKINGS AND OBLIGATIONS IMPLIED BY STATUTE, COMMON LAW, CUSTOM, TRADE USAGE, COURSE OF DEALING OR OTHERWISE, ALL OF WHICH ARE HEREBY EXCLUDED TO THE FULLEST EXTENT PERMITTED BY LAW. WE SPECIFICALLY DISCLAIM THE IMPLIED WARRANTIES OR CONDITIONS OF MERCHANTABILITY AND FITNESS FOR A PARTICULAR PURPOSE.

E. LIMITATION OF LIABILITY

OUR TOTAL LIABILITY TO YOU FOR ANY LOSSES WILL BE LIMITED TO DIRECT DAMAGES, AND SHALL NOT EXCEED THE PURCHASE PRICE OF THE SOFTWARE. NEITHER WE NOR OUR SOFTWARE SUPPLIERS, DEALERS, DISTRIBUTORS, AGENTS OR EMPLOYEES, WILL BE LIABLE FOR ANY INDIRECT, CONSEQUENTIAL, SPECIAL OR INCIDENTAL DAMAGES, SUCH AS DAMAGES FOR LOST PROFITS, BUSINESS INTERRUPTION OR LOSS OF DATA ARISING OUT OF THE USE OF THE SOFTWARE OR THE ACCOMPANYING DOCUMENTATION, WHETHER OR NOT WE HAVE BEEN NOTIFIED OF THE POSSIBILITY OF SUCH DAMAGES.

F. GENERAL TERMS

All rights not expressly granted to you hereunder are reserved by us. This license is effective until terminated. Unauthorised copying of the Software or the accompanying documentation, or failure to comply with any provisions of this license, will result in automatic termination of this license and may result in legal action. Upon termination, you agree to destroy all copies of the Software and the accompanying documentation in your possession.

- The enclosed Software and documentation are provided with restricted rights. Any use, duplication or disclosure by the U.S. Government or any agency thereof is subject to restriction as set forth in subdivision (c)(1)(ii) of The Rights in Technical Data and Computer Software clause at 48 CFR 252-227-7013 and in subdivision (b)(3)(ii) of The Rights in Technical Data and Computer Software clause at FAR 52.227-7013. Similarly, any use, duplication or disclosure by any other government is subject to similar restrictions under local law.

- In the event of any conflict between any provision of this Agreement and any applicable law, the provision or provisions of this Agreement affected shall be modified to remove such conflict and permit compliance with such law, and as so modified this Agreement shall continue in full force and effect.

- This Agreement shall be governed by the English law [and shall be subject to the exclusive jurisdiction of the English courts] without reference to conflicts of laws principles. This Agreement constitutes the entire agreement between the parties with respect to the Software and the accompanying documentation [and supersedes any prior purchase order, communications, advertising or representations concerning the Software and accompanying documentation] and may not be modified other than by an instrument in writing signed by both parties.

REMEMBER TO SIGN AND MAIL THE REGISTRATION CARD TODAY!

IF YOU HAVE ANY QUESTIONS ABOUT THIS LICENSE OR THIS LIMITED WARRANTY, PLEASE WRITE TO OUR CUSTOMER SERVICE DEPARTMENT AT SSEYO Ltd, P.O. BOX 29, BEACONSFIELD, BUCKS, HP9 1EB, UK.

File Menu commands

The File menu offers the following commands:

<u>New</u>	Creates a new album.
<u>Open</u>	Opens an existing album.
<u>Save</u>	Saves an opened album using the same file name.
<u>Save As</u>	Saves an opened album to a specified file name.
<u>Connect to the SSEYO Web Page</u>	Starts your Web browser to connect to the SSEYO Website.
<u>File 1, 2, ...</u>	Opens specified album.
<u>Exit</u>	Exits SSEYO Koan Plus .

Edit Menu commands

The Edit menu offers the following commands:

<u>Add</u>	Adds a new piece to the open album.
<u>Cut</u>	Deletes a piece from the album and moves it to the clipboard.
<u>Copy</u>	Copies a piece from the album to the clipboard.
<u>Paste</u>	Pastes a piece from the clipboard into the album.

Control Menu commands

The Control menu offers the following commands:

<u>Play</u>	Plays the piece that is in the active window.
<u>Stop</u>	Stops the currently playing piece.
<u>Previous</u>	Plays previous piece.
<u>Next</u>	Plays next piece.
<u>Fast Forward</u>	Fast forwards through the currently playing piece.
<u>Rewind</u>	Rewinds through the currently playing piece.
<u>Random Play</u>	Turn on to play pieces in the album in random order; turn off to play pieces sequentially.
<u>Mute All</u>	Mutes the currently playing piece.
<u>Save Knob</u>	Saves your knob settings.
<u>Settings</u>	
<u>Restore Knob</u>	Restores all your knob settings back to values you have saved previously.
<u>Settings</u>	

Options Menu commands

The Options menu offers the following commands:

<u>Setup</u>	Defines the time over which you allow SSEYO Koan Plus to compose and lists options like auto-play.
<u>Record MIDI</u>	Records MIDI information to a file.
<u>File</u>	
<u>Master Control</u>	Use these controls to adjust the volume and stereo balance of a piece (and reverb and chorus if your soundcard supports it).
<u>Settings</u>	
<u>Album Notes</u>	Hides or displays the Album notes window.
<u>Piece Notes</u>	Hides or displays the Piece notes window.

Window Menu commands

The Window menu offers the following commands, which enable you to arrange multiple views of multiple documents in the application window:

<u>Show Player</u>	Shows or hides the Player module.
<u>Show Graphic Analyser</u>	Shows or hides the Analyser module.
<u>Show Album Viewer</u>	Shows or hides the Viewer module.
<u>No Title</u>	Shows or hides the main title bar and menus.

Help Menu commands

The Help menu offers the following commands, which provide you assistance with this application:

<u>I</u> ndex	Offers you an index to topics on which you can get help.
<u>S</u> earch	Calls up the Help Search facility to look for keywords.
<u>U</u> sing	Provides general instructions on using help.
<u>H</u> elp	
<u>A</u> bout	Displays the version number of this application.


New command (File menu)

Use this command to create a new album in SSEYO Koan Plus.

Note: Only one album can be open at a time. Creating a new album will close any other open album.

You can open an existing album with the Open command.

Shortcuts

Player module: 
Keys: CTRL+N

Open command (File menu)

Use this command to open an existing album. SSEYO Koan Plus comes with 3 albums, located in the KOANALB directory.

You can create new albums with the New command.

Note: Only one album can be open at a time. Opening an album will close any other open album.

Shortcuts

Player module:



Viewer module:



Keys: CTRL+O

File Open dialog box

The following options allow you to specify which album to open:

File Name

Type or select the album name you want to open (SSEYO Koan Plus comes with 3 albums, located in the KOANALB directory).

List Files of Type

SSEYO Koan Plus will only read/open files with the extension .SKA (SSEYO album format).

Drives

Select the drive in which SSEYO Koan Plus stores the file that you want to open.

Directories

Select the directory in which SSEYO Koan Plus stores the file that you want to open (SSEYO Koan Plus comes with 3 albums, located in the KOANALB directory).

Network...

Choose this button to connect to a network location, assigning it a new drive letter.

Note: Only one album can be open at a time. Opening an album will close any other open album.


Close command (File menu)

Use this command to close all windows containing the active album. SSEYO Koan Plus suggests that you save changes to your album before you close it. If you close an album without saving, you lose all changes made since the last time you saved it. Before closing an untitled album, SSEYO Koan Plus displays the Save As dialog box and suggests that you name and save it.

Save command (File menu)

Use this command to save the active album to its current name and directory. When you save an album for the first time, SSEYO Koan Plus displays the Save As dialog box so you can name your album. If you want to change the name and directory of an existing album before you save it, choose the Save As command.

Shortcuts

Player module: 
Keys: CTRL+S

Save As command (File menu)

Use this command to save and name the active album. SSEYO Koan Plus displays the Save As dialog box so you can name your album.

To save an album with its existing name and directory, use the Save command.

File Save As dialog box

The following options allow you to specify the name and location of the album you're about to save:

File Name

Type a new filename to save a document with a different name. A filename can contain up to eight characters and an extension of three characters. SSEYO Koan Plus adds the extension you specify in the Save File As Type box, but you should only save your album as a .SKA file (SSEYO album format).

Drives

Select the drive in which you want to store the album.

Directories

Select the directory in which you want to store the album.

Network...

Choose this button to connect to a network location, assigning it a new drive letter.

Connect to the SSEYO Web page (File menu)

Selecting this menu item will load the Web Browser you have defined in the Options Setup dialog. It tries to run this program and then gets it to load up our URL (Uniform Resource Locator).

Note:

You must already have a Web browser setup and functioning correctly (see your Web browser information, e.g. Netscape, Mosaic etc.), for which you will need at least a Dialup account to the Internet with an Internet service provider. There are many source of information on the Internet including magazines, friends and books. If you are new to the Internet or the WWW now is the time to learn about it and get connected!

1, 2, 3, 4 command (File menu)

Use the numbers and filenames listed at the bottom of the File menu to open the last four albums you closed. Choose the number that corresponds with the album you want to open.

Exit command (File menu)

Use this command to end your SSEYO Koan Plus session. You can also use the Close command on the application Control menu. SSEYO Koan Plus prompts you to save documents with unsaved changes.

Shortcuts

Mouse: Double-click the application's Control menu button.



Keys: ALT+F4

Undo/Can't Undo command (Edit menu)

Use this command to reverse the last editing action, if possible. The name of the command changes, depending on what the last action was. The Undo command changes to Can't Undo on the menu if you cannot reverse your last action.

Redo command (Edit menu)

SSEYO Koan Plus will do your last issued command again.

Add command (Edit menu)

Adds a new piece to the currently open album.

The following options allow you to specify which piece to add:

File Name

Type or select the piece name you want to add.

List Files of Type

SSEYO Koan Plus will only add files with the extensions .SKD or .SKP. These files are pieces created with Koan Pro which saves them in either the .SKD format or the encrypted .SKP format.

Drives

Select the drive in which SSEYO Koan Plus stores the piece that you want to open.

Directories

Select the directory in which SSEYO Koan Plus stores the piece that you want to open.

Network...

Choose this button to connect to a network location, assigning it a new drive letter.

Shortcuts

Main control panel:



Keys:


CTRL+A

Cut command (Edit menu)

Use this command to remove the currently selected piece from the album and put it on the clipboard. This command is unavailable if there is no data currently selected.

Cutting data to the clipboard replaces the contents previously stored there.

Shortcuts


Main control panel: 
Keys: CTRL+X

Copy command (Edit menu)

Use this command to copy selected piece onto the clipboard. This command is unavailable if there is no data currently selected.

Copying data to the clipboard replaces the contents previously stored there.


Shortcuts

Main control panel: 
Keys: CTRL+C

Paste command (Edit menu)

Use this command to insert a copy of the clipboard contents (a piece) at the insertion point. This command is unavailable if the clipboard is empty.


Shortcuts

Main control panel: 
Keys: CTRL+V

Play command (Control menu)

Use this command to play the piece in the active window.


Shortcuts

Player module: 
Keys: CTRL+P

Stop command (Control menu)

Use this command to stop the piece currently playing.

Shortcuts


Player module: 

Keys: CTRL+T

Pause command (Control menu)

Use this command to pause the piece currently playing.

Shortcuts

Player module: 

Keys: CTRL+U

Previous command (Control menu)

Use this command to play the previous piece.

Shortcuts

Player module:
Keys: CTRL+R



Next command (Control menu)

Use this command to play the next piece.

Shortcuts

Player module:
Keys: CTRL+E




Fast Forward command (Control menu)

Use this command to move quickly forward through the playing file. The piece will increment forward by 10% each time this command is used.

Note: The piece does not actually rewind as Koan pieces do not operate in this way. What happens is that the piece characteristics will be adjusted to new values appropriate for the new elapsed piece time.

Shortcuts


Player module: 
Keys: CTRL+F

Rewind command (Control menu)

Use this command to move quickly backwards through the playing file. The piece will rewind by 10% each time this command is used.

Note: The piece does not actually rewind as Koan pieces do not operate in this way. What happens is that the piece characteristics will be adjusted to new values appropriate for the new elapsed piece time.

Shortcuts

Player module: 
Keys: CTRL+B

Random Play (Control menu)

Use this command to play the pieces in the album in random order or sequentially.

Shortcuts

Player module:  Random
 Ordered

No Title command (Window menu)



Use this command to hide the SSEYO Koan Plus Title bar and menus. Press the Escape key to bring them back or toggle them on/off.

Shortcuts

Mouse: Double-click on any of the SSEYO Koan Plus modules
Keys: ESC

Show (or hide) Player/ Analyser/ Viewer (Window menu)

Used to show or hide any of the SSEYO Koan Plus modules (with the exception of the Main Control module, see below). The display buttons are located on the Main Control module (and they double up as display/ hide buttons) and the Hide buttons are on the modules themselves. When you hide a module SSEYO Koan Plus remembers this when you next run the program.

When a module is hidden its corresponding display button will be in the up position, ready to be depressed. When a module is open its corresponding display button will be greyed and shown as depressed.

Note: The Hide button has special significance on the **Master Control Module** as it closes down the SSEYO Koan Plus application. It is in effect a master power button.

Shortcuts

Display modules:



Hide button:



Toolbar command (Windows menu)

Use this command to display and hide the Toolbar, which includes buttons for some of the most common commands in **SSEYO Koan Plus**, such as File Open. A check mark appears next to the menu item when the Toolbar is displayed.

See [Toolbar](#) for help on using the toolbar.

Status Bar command (Window menu)

Use this command to display and hide the Status Bar, which describes the action to be executed by the selected menu item or depressed toolbar button, and keyboard latch state. A check mark appears next to the menu item when the Status Bar is displayed.

See [Status Bar](#) for help on using the status bar.

New Window command (Window menu)

Use this command to open a new window with the same contents as the active window. You can open multiple document windows to display different parts or views of a document at the same time. If you change the contents in one window, all other windows containing the same document reflect those changes. When you open a new window, it becomes the active window and is displayed on top of all other open windows.

Cascade command (Window menu)

Use this command to arrange multiple opened windows in an overlapped fashion.

Tile command (Window menu)

Use this command to arrange multiple opened windows in a non-overlapped fashion.

Arrange Icons command (Window menu)

Use this command to arrange the icons for minimized windows at the bottom of the main window. If there is an open document window at the bottom of the main window, then some or all of the icons may not be visible because they will be underneath this document window.

1, 2, ... command (Window menu)

SSEYO Koan Plus displays a list of currently open document windows at the bottom of the Window menu. A check mark appears in front of the document name of the active window. Choose a document from this list to make its window active.

Index command (Help menu)

Use this command to display the opening screen of Help. From the opening screen, you can jump to step-by-step instructions for using **SSEYO Koan Plus** and various types of reference information.

Once you open Help, you can click the Contents button whenever you want to return to the opening screen.

Search command (Help menu)

Use this command to search for topics on which you require help.

Using Help command (Help menu)

3 types of help are available:

- 1 Press F1 to bring up the Help Contents screen at any time
- 2 Press Shift F1 to bring up the context sensitive help arrow which you can click on an item or menu on which you want help (alternatively, press the Help button on the Master Control Module).
- 3 Use the Help menu to call up the Search Dialog or the Help Contents screen.


About command (Help menu)

Displays the copyright notice and version number of your copy of **SSEYO Koan Plus**.

Context Help command

Use the Context Help command to obtain help on some portion of **SSEYO Koan Plus**. When you choose the Toolbar's Context Help button, the mouse pointer will change to an arrow and question mark. Then click somewhere in the **SSEYO Koan Plus** window, such as another Toolbar button. The Help topic will be shown for the item you clicked.


Shortcut

Main control panel: 
Keys: Shift+F1

Minimize command (Application Control menu)

Use this command to reduce the **SSEYO Koan Plus** window to an icon.

Shortcut

Mouse: Click the minimize icon  on the title bar.
Keys: ALT+F9

Maximize command (System menu)

Use this command to enlarge the active window to fill the available space.

Shortcut

Mouse: Click the maximize icon  on the title bar; or double-click the title bar.

Keys: CTRL+F10 enlarges a document window.

Next Window command (document Control menu)

Use this command to switch to the next open document window. **SSEYO Koan Plus** determines which window is next according to the order in which you opened the windows.

Shortcut

Keys: CTRL+F6

Previous Window command (document Control menu)

Use this command to switch to the previous open document window. **SSEYO Koan Plus** determines which window is previous according to the order in which you opened the windows.

Shortcut

Keys: SHIFT+CTRL+F6

Close command (Control menus)

Use this command to close the active window or dialog box.

Double-clicking a Control-menu box is the same as choosing the Close command.

■

Note: If you have multiple windows open for a single document, the Close command on the document Control menu closes only one window at a time. You can close all windows at once with the Close command on the File menu.

Shortcuts

Keys:	CTRL+F4 closes a document window
	ALT+F4 closes the album window or dialog box

Restore command (Control menu)

Use this command to return the active window to its size and position before you chose the Maximize or Minimize command.

Switch to command (Application Control menu)

Use this command to display a list of all open applications. Use this "Task List" to switch to or close an application on the list.

Shortcut

Keys: CTRL+ESC

Dialog Box Options

When you choose the Switch To command, you will be presented with a dialog box with the following options:

Task List

Select the application you want to switch to or close.

Switch To

Makes the selected application active.

End Task

Closes the selected application.

Cancel

Closes the Task List box.

Cascade

Arranges open applications so they overlap and you can see each title bar. This option does not affect applications reduced to icons.

Tile

Arranges open applications into windows that do not overlap. This option does not affect applications reduced to icons.

Arrange Icons

Arranges the icons of all minimized applications across the bottom of the screen.

Choose Font dialog box

<< Write application-specific help here. >>

Title Bar



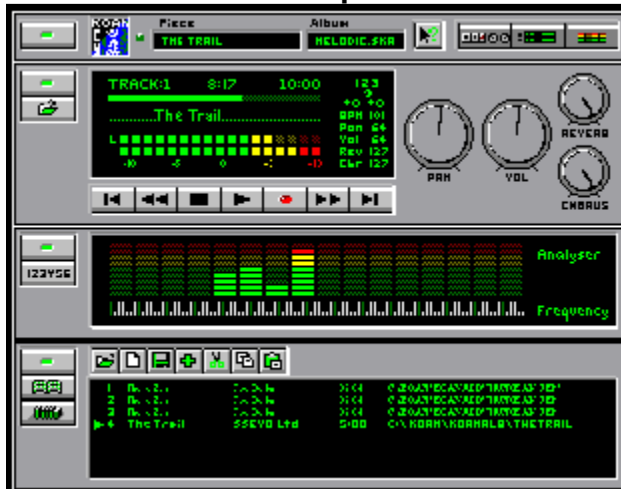
The title bar is located along the top of a window. It contains the name of the application and document.

To move the window, drag the title bar. Note: You can also move dialog boxes by dragging their title bars.

A title bar may contain the following elements:

- Application Control-menu button
- Document Control-menu button
- Maximize button
- Minimize button
- Name of the application
- Name of the document
- Restore button

SSEYO Koan Plus Help Contents



Above: Quick Help for the interface: click anywhere on image for help.

Important notes on SSEYO Koan Plus Demo:

IMPORTANT NOTICE: CAREFULLY READ THE LICENSE BEFORE USING THE SOFTWARE AND ACCOMPANYING DOCUMENTATION. BY USING THE SOFTWARE YOU ARE AGREEING TO ALL THE TERMS AND CONDITIONS OF THE LICENSE AGREEMENT.

SSEYO Koan Plus Demo will play for 5 minutes before displaying a message saying you have another 5 minutes before the product will stop playing. To restart simply press the play button or select Play from the Control menu. The Demo pieces are a selection of those in SSEYO Koan Plus, but they have had their play times reduced.

The SSEYO Koan Plus Demo online help is virtually the same as SSEYO Koan Plus help, allowing you to see the functionality you would get if you purchase the full version.

Quick Start

- [Introducing SSEYO Koan Plus](#)
- [Guide to SSEYO Koan Plus modules](#)
- [Quick Tutorial](#)
- [Albums and Pieces included with SSEYO Koan Plus](#)
- [MIDI file recording](#)

Menu Commands

- [File menu](#)
- [Edit menu](#)
- [Control menu](#)
- [Options menu](#)
- [Window menu](#)
- [Help menu](#)

Further information

- [PC Configuration](#)
- [Setting up your MIDI MAPPER](#)
- [Setup Options](#)
- [Copyright issues](#)
- [Software License](#)
- [SSEYO](#)

SSEYO Koan Plus ■ **SSEYO Koan Pro**

■

SSEYO Koan Plus main display

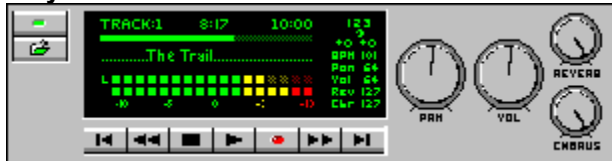
SSEYO Koan Plus consists of a Main Control module plus 3 others: Click on the items below to go to the appropriate help section.

Main Control Module



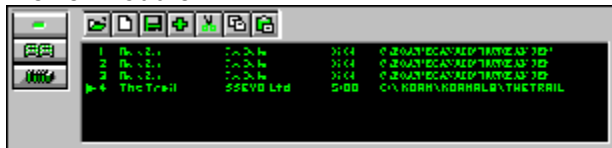
The Main Control module contains all the buttons for displaying the other. Koan piece will continue playing when only this module is displayed. To Close the SSEYO Koan Plus application press the Power button or choose File Exit from the menu.

Player Module



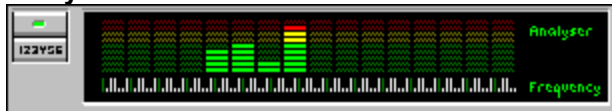
Used to play Koan Albums and Pieces

Viewer Module



Used to view Album and Piece notes

Analyser Module



Used to see more details on Koans musical progress

See also

[Tutorial](#)

Setup Options command (Options menu)

SSEYO Koan Plus Auto Play

Checking this box will mean every time you start SSEYO Koan Plus the album you had loaded when you closed Koan will be reloaded when you next start Koan. It will then start playing automatically. (See also Running SSEYO Koan Plus Minimised).

You may not need to change any of the settings shown below (available under the Options Setup menu) but you should be aware they are available.

Composer

The Composer sets the time for which the SKME looks ahead, and the elapsed period over which it will carry harmony and other relationships.

Reaction Time

The amount of time in milliseconds (ms) the Composer has over which to compose. The larger the value the more the SKME can compose ahead, which is very useful for slower machines, and if you want to do a lot of processor-intensive work, i.e. displaying a screenshow. If you choose a small value for Reaction Time and totally remove the focus away from the program, i.e. hold down the mouse, the output can stop. It will resume when the focus passes back to SSEYO Koan Plus.

Normally set to 5,000 ms (i.e. 5 seconds).

Note: If you want the SKME to compose along with your playing (see Fixed Volume Line Input below) you will want to make this value as small as possible, to get the fastest reaction. e.g. 200 ms (0.2 seconds).

History Time

The period over which harmony relationships will hold good for long notes. Normally set to 20,000 ms (i.e. 20 seconds).

Conductor Timer

Roughly speaking, the Conductor determines what how demanding the SKME is for your PC system resources. The bigger the value of Resolution and Cycle, the smoother the truly Ambient pieces sound as there is less precision required in the composition, however, it is generally best to use smaller values, which are required for the more rhythmic pieces. The default setting is High Priority.

Low Priority

Means the SKME is less likely to take system resources; so some pieces will sound smoother as there is less rigorous control of timings. However, this can have a detrimental effect on highly rhythmic pieces.

High Priority

If on **High Priority** at high **Resolution** (i.e. low actual millisecond (ms) value) the SKME will take as much system resources as it needs - highly rhythmic pieces require this. This can cause other applications to run more slowly.

Resolution

In conjunction with the **Cycle** parameter below, determines how accurately the SKME conducts its pieces/sends out its MIDI information. **Resolution** is the tolerance on the Cycle value. This means Koan will send out MIDI information every **Cycle** +/- the **Resolution**. The default setting is 10ms.

Cycle

This is the period in milliseconds between timer events, i.e. how often the SKME composes/sends out the

MIDI information. Small values for **Cycle** (10 ms or less) mean the pieces will be very accurate time wise (important for rhythmic pieces), however this can sometimes be at the expense of some smoothness, especially on slower machines. Very small values of **Cycle** and **Resolution** can cause your PC to slow down its processing of other applications. The default setting is 10ms.

Fixed Volume Input Line

The SKME allows you to play along with Koan pieces and use the patches available on your soundcard (or in SoundFont banks if defined). You will need a MIDI music keyboard, MIDI guitar pickup or similar device if you want to use this facility; simply plug your device into the MIDI in port (see MIDI Input Device below) and away you go.

The SKME will pick up on MIDI input on any and every MIDI line, the input being chords or single notes, so you may wonder why you need to define an input line at all. The reason is simple. Koan pieces are all governed by volume envelopes, meaning sometimes a voice can have no, or very low volume. Naturally, if you are going to play along you want to be able to play when you want, so we override the volume envelope for your input on a specific channel.

Your input will be interpreted just as if the SKME had generated it, and everything else the SKME generates will be harmonized against it according to the Scale and Harmony rules currently active. You can record your session to a MIDI file, which captures both yours and Koans playing.

Line Number

You select the MIDI line into which you want to play along with the SKME (it will listen to all MIDI lines, as above, but only this one is set to maximum volume). The default is 16, as few pieces will generally use this number of MIDI lines.

Note: If you are not using this feature set both the Line Number and Set Instrument values to none, otherwise this patch will override any you have set in the piece, and at full volume too!

Set Instrument

Choose the instrument patch you want to use.

MIDI Output Device

Select where you want the SKME to send its MIDI output. Normally this will need to be set to the MIDI Mapper if you are using Windows with a soundcard, or alternatively, you can write directly to your soundcards driver. However, if you wish to drive an external synth then set this up to your MIDI Output device, e.g. SB16 MIDI out.

MIDI Input Device

Select the device through which you want to input MIDI information. If this is not set correctly the SKME will not detect any incoming MIDI signals with which to harmonize.

Koan File Supplementary Search Path

Enter the path(s) here where you want SSEYO Koan Plus to look for any supplementary files used by your pieces. These could be for example SoundFonts from a CD ROM drive, Gravis patches off a network drive or WAV files from another directory to that used by your piece. The format is that of your normal DOS PATH command. Separate your paths with semicolons and leave no spaces between entries. Adding a \ after your directory is optional and not required.

Example:

C:\WAV;D:\SBK;E:\KOAN\PIECES;C:\KOANPRO\TEMPLATE

Define Web Browser (button)

If you have an Internet account with a Internet Service Provider and have a web browser setup on your system (e.g. Netscape or Mosaic) then you can automatically dial our [website](#) for the latest news, files and links. Press this button to call up the Select your browser application dialog, which is like a normal file open dialog. Find your browser and press OK to have it selected. Once you have done this you can select File, [Connect to the SSEYO Web Page](#) from the menu to automatically connect to our website. This will load up your browser (it should not be loaded already - if it is just put in our website URL <http://www.sseyo.com>) with our UR

Note 1: Changes to the Composer or Conductor values are implemented by the SKME as soon as it can accommodate them. You do not need to restart the piece for these changes to take effect.

Note 2: The values set here will be used by the SKME to play any piece you might load, so in some circumstances it may be necessary to alter them. You will be able to identify this if the piece sounds jumpy or seems to give you bursts of notes. In this case try to increase the reaction time first and then raise or lower the values for cycle/resolution. However, once set to your satisfaction they should not require frequent adjustment.

Running SSEYO Koan Plus Minimised

You may want to set up SSEYO Koan Plus so that it loads your last album automatically, starts it playing and then minimises to an icon. This means you never actually see SSEYO Koan Plus full screen (unless you maximise the application). You may wish to do this if all you want to do is listen to your favourite album with the minimum of effort. You could even then put the SSEYO Koan Plus icon in your Startup program group so that everytime you turn on your machine SSEYO Koan Plus kicks off playing behind the screens.

To setup SSEYO Koan Plus to run minimised do the following:

- 1 Select Setup Options and check the Autoplay box
- 2 From the Program Manager select the SSEYO Koan Plus icon and choose File Properties.
- 3 Make sure the Run Minimised box is checked and press OK.

See also

[Setup Options Command](#)

[Always on Top](#)

Always on Top (System Menu)

This feature allows you to force SSEYO Koan Plus to always display on the screen, no matter what other applications you are running. The option can be selected to toggle it on and off.

See also

[Running SSEYO Koan Plus Minimised](#)

Master Control Knobs/ Settings Command (Options menu)

These controls override, but do not alter any piece level settings that may be provided within the piece. They are additive in that they add a uniform amount to the value of this parameter for each instrument in the piece. Simply click on any knob (or slider if working off the menu option) with the mouse and drag the control setting to a new value, then release the mouse for the setting to take effect.

Volume Sets the master volume (actual value shown on Player LED display).
Pan Sets the master stereo/ pan position of the output (actual value shown on Player LED display).

Reverb Sets master reverb level (actual value shown on Player LED display).
Chorus Sets master chorus level (actual value shown on Player LED display).

Note 1: Reverb and chorus settings will only have any effect on soundcards/ synths that support them.

See also

[Restore Knob Settings](#)

[Save Knob Settings](#)

Font command (Options menu)

Allows you to determine the font you use for SSEYO Koan Plus. SSEYO Koan Plus comes with a default setting of Arial 10 point.



Mute All command (Options menu)

Mutes or resets back to normal the currently playing piece. As well as the Mute All button toggling between on and off states, the LED display will indicate whether mute is on or off as well.

If the Analyser module is open when the piece is muted and it is set to display MIDI channel information, then all the channels will be shown as being muted.

Note: How quickly this button acts to mute the piece depends on how far in advance you are composing.

Shortcuts

Player (mute on): 
Player (mute off): 
Keys: CTRL+M

Save Knob Settings command (Control menu)

Allows you to save your volume, pan and tempo settings (and reverb and chorus settings if your soundcard supports them). When saved you can then apply them as the default settings as you wish.

The user control settings work on the principle of adding/ subtracting your settings to the values provided in the playing piece. If you turn the knob to the left you will be reducing that value; if you turn it to the right you will be increasing that value. To hear the piece as it was intended it is best to only adjust the volume and pan settings to suit your system, and leave the other controls set at mid value.

Shortcuts

Player module:  

See also


[Restore Knob Settings](#)

Restore Knob Settings command (Control menu)

Will reset all volume, pan and tempo settings (and reverb and chorus settings if your soundcard supports them) back to the values saved previously.

The user control settings work on the principle of adding/ subtracting your settings to the values provided in the playing piece. If you turn the knob to the left you will be reducing that value; if you turn it to the right you will be increasing that value. To hear the piece as it was intended it is best to only adjust the volume and pan settings to suit your system, and leave the other controls set at mid value.

Shortcuts

Player module:  

See also

[Save Knob Settings](#)

Album Notes command (Option menu)

Pressing the Album Notes button calls up the Album notes window where you view notes provided about the album. Alternatively you can create your own album and add your notes here.

Note: Remember that the copyright on the Album notes belongs to the artist who compiled the album and wrote the notes. This may or may not be the same as the Copyright holder of the Piece who is detailed in the Piece, and who is shown in the Album contents window.

Shortcuts

Viewer module:



See also

[Piece Notes](#)

Piece Notes command (Options menu)

Pressing the Piece Notes button calls up the Piece notes window where you view notes provided about the piece. These notes are provided by the author and are not editable, however, you may copy the text to another file.

Recording Rights

Every piece you have in your possession will have been authored by someone. When they save the piece they have created they can choose two options. One is to choose whether or not they will allow you to be able to record the output to a MIDI file should you so desire, and the other is to decide whether or not they are prepared to relinquish all rights in and title to MIDI file or other recordings of their piece. If they do, then you can record it and you own the copyright on any recordings you may make. Please refer to [copyright](#) for further clarification.

Note: Remember that the copyright on the Piece notes belongs to the Copyright holder detailed in the Piece.

Shortcuts

Viewer module:



See also

[Album Notes](#)

Analysers MIDI Display command (Windows menu)

Toggles between one of 2 types of display: MIDI Channel / Frequency Spectrum



MIDI Channel display:

16 LED bars are shown, one for each MIDI channel. Each bar shows the relative volume of each note played on that channel and gives a good visual indication of the activity going on on that channel.



Frequency Spectrum Display:

16 LED bars are shown, spanning the range of around 10 octaves, indicated by the keyboard display below the LED bars. Middle C is indicated on the keyboard by a pink key, and each octave is separated by a green key. The bars show the relative volume of each note played within their related keyboard range and give a good visual indication of the frequency balance of the piece.

Note: It is possible that some notes played by your sound source may continue to play whilst the display shows them to have faded away. Each meter responds to note on information in the MIDI stream and it assumes that all notes played have a natural decay curve. This will be correct for most types of instrument but it is possible that some instruments in the piece may play very long notes which hold their volume. In this instance you would see the note fade away but still hear it. For instance, an artist might decree that one of the instruments in the piece plays a pad - a soft sound which on a normal synthesiser will play for as long as a key is depressed - for a period of 20 seconds. Even though you will see the note displayed in the LED bars for a short while it will continue to play on for around 20 seconds.

Shortcuts

Analysers module:



See also

[SSEYO Koan Plus Analyser Module](#)

Toolbar

The toolbar is displayed across the top of the application window, below the menu bar. The toolbar provides quick mouse access to many tools used in **SSEYO Koan Plus**,

To hide or display the Toolbar, choose Toolbar from the Window menu (ALT, W, T).

Status Bar

The status bar is displayed at the bottom of the **SSEYO Koan Plus** window. To display or hide the status bar, use the Status Bar command in the Window menu.

The left area of the status bar describes actions of menu items as you use the arrow keys to navigate through menus. This area similarly shows messages that describe the actions of toolbar buttons as you depress them, before releasing them. If after viewing the description of the toolbar button command you wish not to execute the command, then release the mouse button while the pointer is off the toolbar button.

Not yet determined*****

The illustrated areas of the status bar indicates various piece statistics:

Indicator	Description
1st box	Tempo of the piece in beats per minute.
2nd box	Time signature of the piece, i.e. 4/4.
3rd box	Time the piece has been playing in minutes:seconds.
4th box	Time the piece has left to play in minutes:seconds.

SSEYO Koan Plus Main Control module

This module is the control centre. It allows you to launch the various modules that are part of SSEYO Koan Plus. To close the Main Control module either press the power button or select File Exit from the menu.

There are two LED panels, the first displays the currently playing (or loaded) piece, and the second the currently loaded album.

The light on the Master Control Module will flash when a piece is playing.

When a module is open the appropriate module button will be grayed; conversely when the module is closed the button will be up and ready to be pressed.

Tip: To see the menus double click with the mouse on any of the modules.

Click	To
■	Close down the SSEYO Koan Plus application.
■	Context sensitive help.
■	Display/ Hide the SSEYO Koan Plus Player module
■	Display/ Hide SSEYO Koan Plus Viewer module
■	Display/ Hide SSEYO Koan Plus Analyser module

SSEYO Koan Plus Player module

The SSEYO Koan Plus Player module is the major module in the application. It allows you to play Koan pieces and has controls similar to a CD player.

Main LED panel

The LED panel which graphically displays information about the piece and its current status. The maximum combined volume of all the playing instruments is set with Volume knob. The Pan knob adjusts the stereo position. The Pan and Volume information is displayed in the Left and Right LED displays.

A moving piece played marker shows how long the piece has been playing for. Above this is shown the playing Track number, how long it has been playing and its total play length.

Below this is the trailing display showing the piece name. This scrolls across the screen and can be turned on and off by clicking on it.

The piece tempo is also displayed and is labelled BPM (beats per minute). Some pieces have tempos that change during the piece and this is reflected in the values shown.

There are also a number of controls you can click in this panel (see below).
Save/ Restore Knob settings

Knob controls

See the section on Master Controls Knobs for information about them.

Note: Adjusting the Volume knob when the Mute facility is selected will automatically turn it off.

Click	To
-------	----

- | | |
|---|---|
| ■ | Hide the Player window. |
| ■ | Open an existing album. |
| ■ | Play the previous piece. |
| ■ | Rewind the piece that is currently playing in 10% increments. |
| ■ | Play the currently selected piece. |
| ■ | Fast forward the currently playing piece in 10% increments. |
| ■ | Play the next piece. |
| ■ | Stop the currently playing piece. |



- | | |
|---|---|
| ■ | Call up the MIDI file record dialog. |
| ■ | Cause the pieces in the album to be played in track order. |
| ■ | Cause the pieces in the album to be played in random order. |
| ■ | Mute all the instruments playing in the current piece. |

- User knob settings are saved.
- Restore the knob settings to the values you have previously saved.

SSEYO Koan Plus Analyser module

The SSEYO Koan Plus Analyser module is designed to allow you to see more deeply into what is happening with the music, and provide a pleasant moving indicator coupled to the piece output.

It comprises a power button, a display toggle button and an LED display panel.

Click	To
--------------	-----------

- Hide the Analyser window.



Toggle you to the MIDI line display.

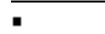


Toggle you to the Frequency display.

SSEYO Koan Plus Viewer module

The SSEYO Koan Plus Viewer is there to let you see what pieces are in your album or to create new albums into which you can place pieces. It includes a main window in which the relevant abbreviated piece information is displayed, namely the name of the piece, the author, its length and its filename together with various buttons for editing albums.

Click	To
-------	----








- | | |
|---|-------------------------|
|  | Hide the Viewer window. |
|---|-------------------------|



	View/ edit the album notes.
--	-----------------------------



	View the piece notes.
--	-----------------------

- | | |
|---|--|
|  | Open an existing album. |
|  | Create a new album. |
|  | Save the active album with its current name. If you have not named the album, SSEYO Koan Plus displays the Save As dialog box. |
|  | Add a piece to the currently open album. |
|  | Remove a selected piece from the album and stores it on the clipboard. |
|  | Copy the piece selected to the clipboard. |
|  | Insert the piece currently in the clipboard at the insertion point. |

Quick Tutorial

SSEYO Koan Plus is a very easy to use product as it is rather like a CD player. It is so easy to use you should not even need to look at this tutorial! However, before you do read the tutorial it is best to get a quick understanding of what SSEYO Koan Plus DOES, so we recommend you have a short browse of the [Introduction](#).

SSEYO Koan Plus will play back beautiful ever-changing mood music, and all you have to do to get this to happen is load an [album](#) and play it! First of all, though, it is necessary to familiarise yourself with the display [modules](#), what they look like and what they do.

- Clicking on any of the buttons in the tutorial will take you to a more in depth explanation of the item in question.
- We are assuming you have correctly installed your soundcard and have had no problems installing SSEYO Koan Plus.

1 The Modules

▪

Main Control Module

▪

Player Module

▪

Viewer Module

▪

Analyser Module

- **Showing and Hiding modules**

Press the above button in any module to hide it. Doing so will not stop an album playing. Note that you can also setup SSEYO Koan Plus to run [minimised](#).

2 Opening, playing and closing

- **Opening an Album**

SSEYO Koan Plus Demo comes with [1 albums](#) which contains a number of [pieces](#). This album and pieces are to be found in the KOANALB directory. It is possible when you first load SSEYO Koan Plus Demo that the demo album will already be loaded for you. If not, follow the normal File Open procedure from the [menu](#) or use the click the Open button (above) on the Player module (or the Viewer module).

Tip: To see the menus double click with the mouse on any of the modules.

Note: Only one album can be open at a time. Opening an album will close any other open album.

- **Playing an piece or album**

Press the Play button on the Player module or select Control Play from the menu. Either the first piece in the album or the piece that is highlighted in the Viewer or will then play, depending on whether or not you have opened the album earlier. You can double click on a piece to cause it to play, too.

- **Next piece in an album**

To go to the next piece and play it either press the Next piece button or select Control Next from the menu.

- **Previous piece in an album**

To go to the previous piece and play it either press the Previous piece button or select Control Previous from the menu.

- **Fast forwarding a piece**

Press the Fast Forward button to scroll through the currently playing piece or select Control Fast Forward from the menu.

- **Rewinding a piece**

Press the Rewind to scroll back through the currently playing piece or select Control Rewind from the menu.

- **Stopping a piece**

Press the Stop button or select Control Stop from the menu.



- **Recording a MIDI file**

SSEYO Koan Plus allows you to record its output as a type 1 MIDI file (see discussion on [copyright](#)). You get the best results by following the steps below:

- 1 Start the record process by pressing the Record button.
- 2 Start the piece playing which you want to record.
- 3 Stop the piece playing
- 4 Stop recording the piece and close the MIDI file record dialog.

3 Albums and Pieces

Press the Album button or the Piece button to view the Album or Piece notes respectively, or alternatively select Control Album or Control Piece from the menu.

- **Piece notes**

In the Piece notes window is displayed more information, as supplied by the author, about the piece itself. You can not edit any of this information. The playing piece is always identified by the green arrow in the Viewer display area.

- **Album notes**

Type your details into the edit album field and add your notes to where it says edit album notes and press OK. Remember to save your album.

- **Opening an album**

To open an album either select File Open from the menu or press the Open button.

- **Creating a new album**

To create a new album either select File New from the menu or press the New button.

- **Saving an album**

To save an album either select File Save or File Save As from the menu or press the Save button.

- **Adding pieces to an album**

To add a piece to an album either select Edit Add from the menu or press the Add button.

- **Cutting pieces from an album**

To remove a piece from an album select Edit Cut from the menu or press the cut button.

- **Copying pieces in an album**

To copy a piece from an album to the clipboard select Edit Copy from the menu or press the Copy button.

You can then Paste it back in to duplicate the piece.

- **Pasting pieces in an album**

To paste a piece from the clipboard select Edit Paste from the menu or press the Paste button.

4 Knobs (volume, pan, reverb and chorus) and other controls

Use a mouse to move the Player control knobs (by clicking on the place where you want the control to go or by dragging the position marker) to adjust your volume/ pan/ reverb/ chorus /tempo values in real-time. Changing these controls also affects the levels displayed in the Analyser and Left and Right level displays, as you would expect.

Note: Reverb and chorus are only supported by certain soundcards - check your soundcard manual.

-
- **Mute All**

Press the button in the Player LED panel to instantly mute the playing piece. When the piece is muted the button will display with a line through it.

-
- **Ordered/ Random piece play**

Press the button in the Player LED panel to toggle between random piece play (213), where any piece in the album can be chosen to play, or ordered piece play (123) when it will play each piece in turn.

- **Save Knob Settings**

Press the button in the Player LED panel to save your volume, pan, reverb and chorus settings to be the defaults.

Note: Reverb and chorus are only supported by certain soundcards - check your soundcard manual.

- **Restore Knob Settings**

Press the button in the Player LED panel to apply previously saved knob settings.

Note: Reverb and chorus are only supported by certain soundcards - check your soundcard manual.

SSEYO Koan Plus requirements

Requirements

SSEYO Koan Plus requires a 486 (or higher) based computer with a minimum 2Mb hard disk space and 4Mb RAM (some rhythmic pieces require a faster 486). You need to be running Windows 3.1 or Windows 95. There are no special display requirements. You may use any sound card or MPU401 MIDI interface that can connect to the [Windows MIDI mapper](#) (refer to your Windows manual for details on the MIDI Mapper). This noted, **SSEYO Koan Plus** will sound the best if you are using a high end sound card or external synth/sampler; this is because the quality of the sound scapes produced is generally only limited by the sound quality of your sound card/ synthesizer.

Note: We recommend you use the MIDI Mapper, but we will pick up any other Windows MIDI driver if the MIDI Mapper is not installed.

Minimum (for non-rhythmic pieces)

- 33MHz 486 DX PC
- 4Mb RAM
- DOS 3.0 or later
- Windows 3.1 or Windows 95
- Mouse
- 3.5" 1.44Mb floppy drive for installation
- 2Mb free hard disk space
- A PC sound card/MIDI interface with an installed Windows MIDI driver

Strongly Recommended (for all pieces)

- 66MHz 486 PC (or greater)
- 8Mb RAM
- DOS 5.0
- Windows 3.1 or Windows 95
- Mouse
- 3.5" 1.44Mb floppy drive for installation
- 3Mb free hard disk space
- PC soundcard/ MIDI interface with MIDI Mapper support and with a high quality sound synthesiser - Wavetable or LA (Creative Labs SoundFont or Gravis patch compatible preferred)

Note: **SSEYO Koan Plus** supports the [General MIDI standard](#), and all instructions assume your sound card or synth does, too.

Installing SSEYO Koan Plus

Note: Before installing the software we recommend you take a backup copy of the SSEYO Koan Plus disk, in case you lose or damage the originals.

1. Insert the SSEYO Koan Plus disk into your floppy disk drive
2. Select Run from the File Menu of the Program Manager
3. Enter the following:
drive:\SETUP.EXE
where drive is the drive letter of your floppy drive.
4. Choose your installation directory (we recommend you use the default \KOANPLUS) and press Continue. The installation will now take place and a program group will be made for you.

u If you have not already set up the Windows MIDI Mapper for your sound card, follow the instructions given in the manual that came with it or refer to the MIDI Mapper help topic.

Setting up the MIDI Mapper

Note: We recommend you use the MIDI Mapper, but we will pick up any other Windows MIDI driver if the MIDI Mapper is not installed. This section is only for the Window 3.1 MIDI Mapper.

General reference

The MIDI Mapper is a very useful Windows utility and it makes it easier for software to communicate with your sound card or MIDI interface card. It acts as an intermediary through which SSEYO Koan Plus talks to your sound card. It basically one big patch map (or post office) which allows you to match up your sound card with any software generating a MIDI output. SSEYO Koan Plus supports the General MIDI standard, so, if not already set-up in this mode, you will need to set up the MIDI Mapper to match this standard.

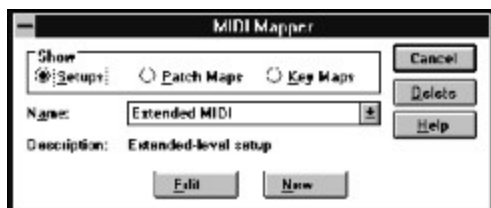
Incidentally, Windows 3.1 supports a number of sound cards/devices, and these are currently the Creative Labs Sound Blaster v1.0/ v1.5, Roland MPU401, Roland LAPC1, Ad Lib, Media Vision Thunder Board etc. If your card/interface is not apparently supported by Windows then the card/interface manufacturer should produce a 'driver' that allows it to talk to the MIDI Mapper. To see the list of drivers supported (and to make sure your sound card is configured properly) select the Drivers icon in the Program Manager Control Panel. If your card is not already set up, refer to the card/interface maker's instructions.

The MIDI Mapper comes with 4 patch maps as standard; MT32, MT32 perc, Prot/1 and Prot/1 perc. The MT32 perc is actually set up as the General MIDI patch map (quite obvious really), but for the example below we are going to assume that you have a Roland SCC1 card fitted, and you need to create a patch map for this card.

We have chosen this card to represent the case of those cards which do not have a preset setup in the MIDI Mapper. Although you may be able to follow the example, we do recommend that you have a quick read through the section on the MIDI Mapper in the Windows manual before proceeding.

Note: You should also follow the instructions provided by the supplier of your sound card/interface, because you may need a special set-up for some cards. SoundBlaster, MediaVision and similar cards do not always support the 128 General MIDI sounds.

Double click on the Control Panel icon in the Program Manager, and then double click on the MIDI Mapper (if there is no MIDI Mapper, then you have not properly set-up your sound card, or there is no sound card installed - refer to the Windows manual).



Windows 3.1 MIDI Mapper

Select Show Patch Maps and open the Name drop box. You will see there is no General MIDI set-up up so we are going to create one.

Select New and in the Name and Description boxes type General MIDI, then press OK.

You are presented with a table with the headings Src Patch, Src Patch Name, Dest Patch, Volume %, and

Key Map name. We want to set up a General MIDI patch map, and this entails matching the Src Patch to the Dest Patch.. Kindly, this is the default. Press the button at the top (which toggles between '1 based patches' and '0 base patches') so that the first Src patch is 1, which corresponds to acoustic grand piano. Make sure the Key Map name is 'none' and press OK.

Next, select Show Setup and open the Name drop box. You will see there is no General MIDI set-up (however, Extended MIDI really is General MIDI, without the Patch Map set up properly!) so we are going to create one.

Select New and in the Name and Description boxes type General MIDI, then press OK.

You are presented with a table with the headings Src Chan, Dest Chan, Port Name, Patch Map Name and Active. The Src and Dest Channel matchings are beyond the scope of this manual, but we are going to pair 1 with 1, and 2 with 2 etc. The Port Name is the driver you have set up to talk to your sound card.

Go through each of the 16 Src Channels and set Port Name to the driver your card is using (e.g. MIDI 401 for the SCC1), and Patch Map name to the General MIDI patch map we have just made. Make sure all of the Active boxes is ticked.

Note: SSEYO Koan Plus requires that channel 10 is reserved for drums/percussion

Your sound card should now be ready to work with SSEYO Koan Plus.

MIDI File Recording

■

MIDI File Recording functionality has been removed from the SSEYO Koan Plus Demo version, and the description below is for SSEYO Koan Plus, allowing you to see what you can do if you purchase the full product.

Either press this button or select MIDI file record from the Options menu. Use this command to record a Type 1 MIDI file of the currently playing piece. Once you have recorded the file you can edit it in your favourite sequencer package. Follow the steps in the order below:

Note: Recording Rights

Every piece you have in your possession will have been authored by someone. When they save the piece they have created they can choose two options. One is to choose whether or not they will allow you to be able to record the output to a MIDI file (if they have done this then the MIDI file record check box will not be checked and you will be unable to record the piece). The other is to decide whether or not they are prepared to relinquish all rights in and title to MIDI file or other recordings of their piece. If they do, then you can record it and you own the copyright on any recordings you may make. Please refer to copyright for further clarification.

General Recording

- 1 Select Options Midi File Record from the menu.
- 2 Enter a file name and press OK.
- 3 Press the Start button in the MIDI record dialog FIRST and then start the Koan piece playing that you want to record. This is to make sure you capture all the program change/ instrument selection information (see note 1).
- 4 To record the same piece again just press the Name File button and choose a new name.
- 5 Stop the piece playing BEFORE you stop the MIDI file recording, as you will get hanging notes in the MIDI file (because they were never told to stop playing! - see note 2)
- 6 Stop the MIDI file recorded by pressing the MIDI file Stop button in the MIDI File Record Dialog.

Advanced recording

Using Pause when recording one piece in one MIDI file

To Pause the recording during a take, press the Pause button. If your piece has loaded some new patches in the meantime they will not be loaded correctly when you play back your MIDI file because you have not recorded the Program change information.

Using Pause when recording multiple pieces in one MIDI file

Recording many pieces in one file is really neat because you can stitch together medleys of songs without even the use of a sequencer package. If you want to pause the recording of one piece and then load another to be recorded in THE SAME MIDI file make sure you follow the following procedure (assuming you are already recording a piece):

- 1 Press the Pause button in the MIDI File Record Dialog
- 2 Stop the currently playing piece.
- 3 Open the piece you want to record in the same MIDI file.
- 4 Start Recording again.
- 5 Start the new piece playing.
- 6 Repeat 1 to 5 for other pieces to be added to the file.
- 7 Stop your last piece playing

- 8 Press the Stop recording button
- 9 Close the MIDI File Record dialog

Note 1: It is always best to start recording before you play your piece to make sure you capture all the program change/ instrument selection information .

Note 2: If you do not stop **SSEYO Koan Plus** playing before you stop the midi file recorder, and you then load up the midi file into your sequencer you will hear/ see that the notes that were playing when you stopped recording, continue for ever. This is because pressing the midi file stop button does NOT stop **SSEYO Koan Plus** playing. If you want to force all notes to stop in your Midi file, just stop **SSEYO Koan Plus** before you stop the Midi File Record.

Note 3: SSEYO Koan Plus can create pieces that have very slow tempos (e.g. less than 40). Some sequencer packages may have trouble loading files with very slow tempos.

See also

[Piece Notes](#)

Albums

SSEYO Koan Plus Demo V1.1 comes with 1 album containing 7 Koan pieces. All of these demo pieces will cut out after 2 minutes.

SSEYO Koan Plus V1.1 comes with a number of pieces and albums. Each album has its own short notes and each piece contained in the album has its own Piece Notes in which the author has the opportunity to give a description of the piece or any other details they may want you to see.

