

# Otto's VolID32 - A Utility to Display Volume Names

## Description:

Otto's VolID32 helps identify which CDROM disk is loaded in a drive. Since most disks have a unique label, VolID uses this label to display a title you supply. It updates the information every 15 seconds or so.

## Prerequisites:

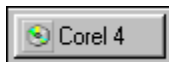
A Win32 platform. This application needs a system timer to update its display regularly. Only useful with disks that have a label.

## Installation:

Copy the program `VOLID32.EXE` to any directory and just run it. It has no special path requirements.

## Using VolID32

VolID32 only runs as an icon. It looks like this in the Windows 95 taskbar:



When VolID32 starts the first time, it looks at the C drive and displays its label. You will probably want to point it at another drive - the section on **Setting Drive Letter** has the details.

Since some disks may have obscure labels, such as "VOL5REV2", you can setup an **alias** for a given label that contains more helpful text. That is covered in the section on **Setting An Alias**. If VolID32 finds an alias, it displays it; if not, it displays the label; if the drive is empty or the disk has no label, it displays "empty" or "none".

In the example above, VolID32 is monitoring the F: drive which contains a CD-ROM disk that has the alias "Corel 4".

You can launch VolID32 with a drive parameter which will override the value in the configuration file. For example, to monitor the C drive, start the program as follows:

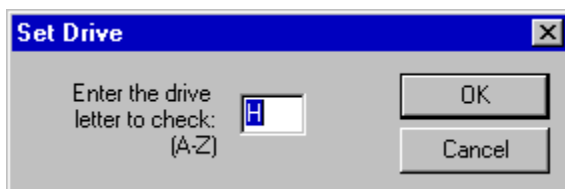
```
c:\windows\volid32.exe C
```

While VolID32 was designed with CD-ROM drives in mind, it can be used with any drive type that is assigned a drive letter.

To close VOLID32, right click on the icon and choose **Close** from the system menu.

## Setting Drive Letter

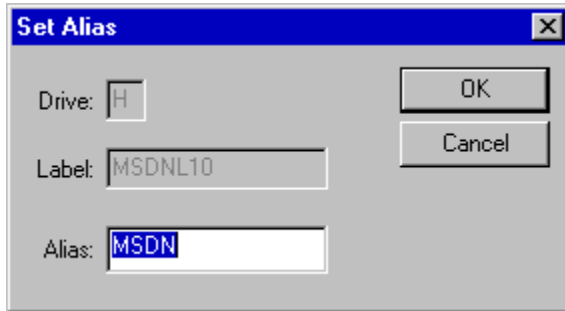
Click the icon to open the **System Menu** and choose **Set Drive Letter...** The one configurable option is the drive letter to monitor.



Enter a letter from 'A' to 'Z'.

### Setting An Alias

You can establish an alias for any disk or drive label. First use the **SetDrive Letter** so that VolID32 is looking at the right drive. Then choose **Setup Alias...** from the System Menu. A dialog box will appear displaying the current drive letter and label, along with an *Alias* field that you fill with any text you choose (up to 15 characters). The Win95 task bar rather encourages *short* aliases.



Click **Yes** and your *Alias* is saved to disk in the system registry under "HKEY\_CURRENT\_USER\Software\SPG\VolID32\Config".

### Peculiarities

None at this release.

### Acknowledgement:

Thanks to Peter Klimek for suggesting this program and testing it. Thanks also to Guenter Herbig for encouragement and suggestions.

### Disclaimer

You use Otto's VolID32 entirely at your own risk. It may or may not be suitable for your system.

### Copyright

Otto's VolID32 is a copyrighted work of Doug Overmyer. It may be used and distributed freely in any non-commercial setting. All distribution in connection with any commercial product must have the author's prior approval.

### Author

Doug Overmyer  
6/10/95

### Problems, Suggestions:

Contact me on CIS:71021,2535 or Internet: [overmyer@netcom.com](mailto:overmyer@netcom.com)

### History:

1.0 Win32 release - Use new system functions to get volume id