


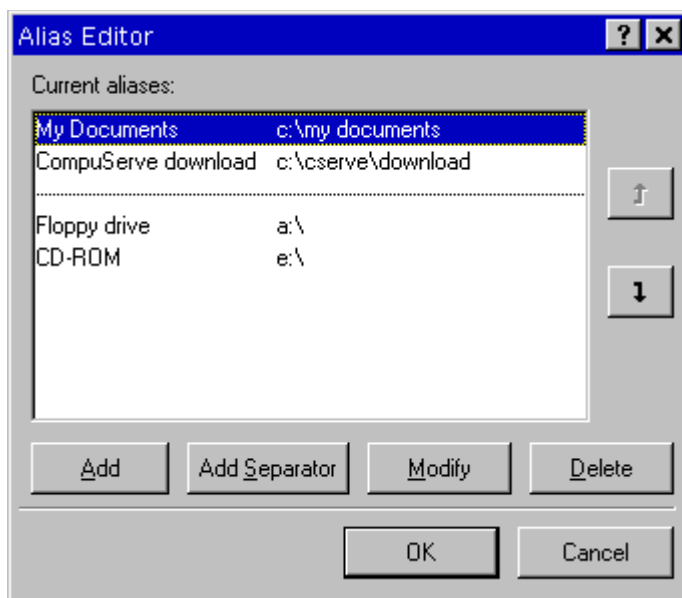
## WinGO Directory Alias

WinGO is a neat little utility that sits as an icon in the Windows95 system tray (next to the clock). Its main function is to provide a quick way of getting at your most commonly used directories without having to load Explorer and navigate to it.

When you left click on the WinGO icon  a popup menu appears. Initially this menu is empty, but you can easily add entries to it. Once you have your entries configured, clicking on one of the entries will open up an Explorer window on the associated directory. You can even configure individual entries to automatically open up as Open views or Explorer views (which include the tree on the left hand side).

### Configuring WinGO


To configure WinGO, right click on the icon and a menu appears. Select "Alias Editor..". The following dialog box appears:



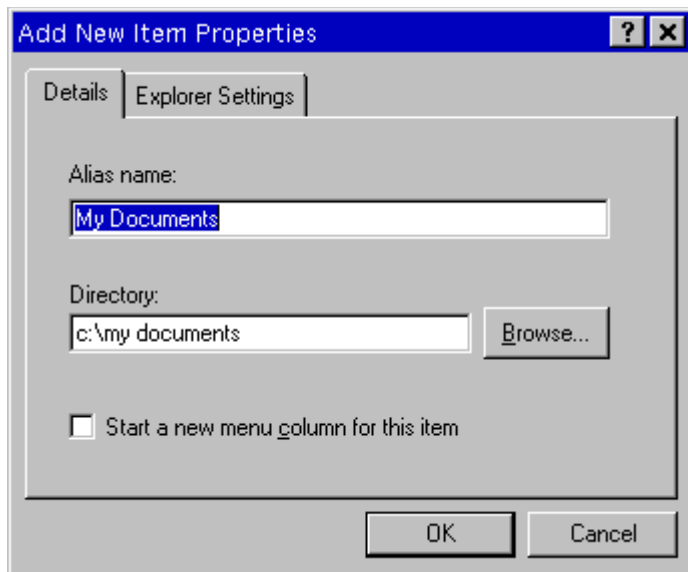
**Alias Editor dialog**

You can easily add, modify or delete entries, and also move a particular entry up or down in the list.

Separator items can also be added. These cause a line to be displayed at that position in the popup menu, and appear as a horizontal line in the list.

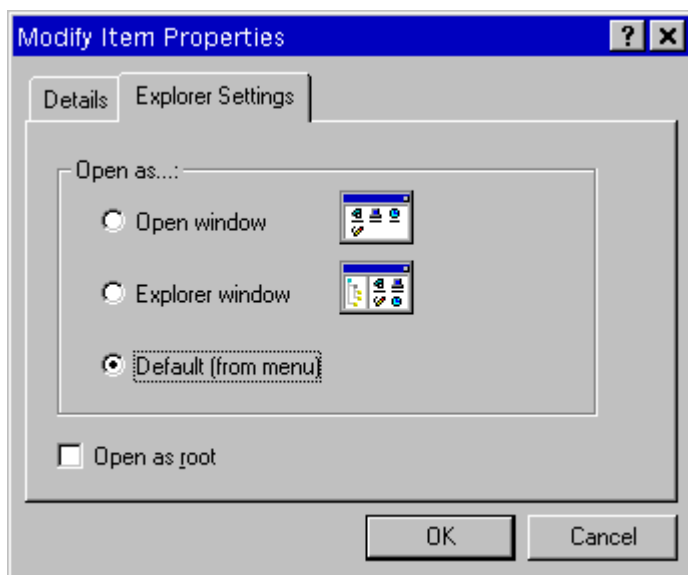
Full context help is provided on the right-hand mouse button. Just right click on an item to see the "What's this" menu. Edit fields pop up their own menus, but you can still access help on this items by first selecting the help icon  on the title bar of the dialog.

When Add or Modify is selected, another dialog box appears. Here the alias and its associated directory can be entered (a Browse button is provided to make it easy to find the directory you want).



**Modify Item Properties - Details dialog**

By clicking on the "Explorer Settings" tab you can specify whether this item should be opened in Explorer as a normal "Open" view, or as an "Explorer" view (with the tree window on the left). A default setting is provided, which can be configured to cause all windows to open the same way.



**Modify Item Properties - Explorer Settings dialog**

An "Open As Root" setting is also provided. This causes the window to open up as if it were the root directory, so you won't be able to go up a directory. On the other hand, this can be very useful with Explorer views as it means you can see the subdirectories without having to wait for the tree for your entire system to be loaded in.

## **Registration**

You are free to use WinGO for 30 days without paying. After that, if you wish to continue using it you are asked to register it. Registration fee is US\$20.

To register, please mail US\$20 (in cash please - the handling fee for overseas cheques is very high in the UK) to the author, being sure to supply your full name and Compuserve ID:

Steve Saxon, 47 Southwold, Bracknell, Berkshire RG12 8XY, England.