

About

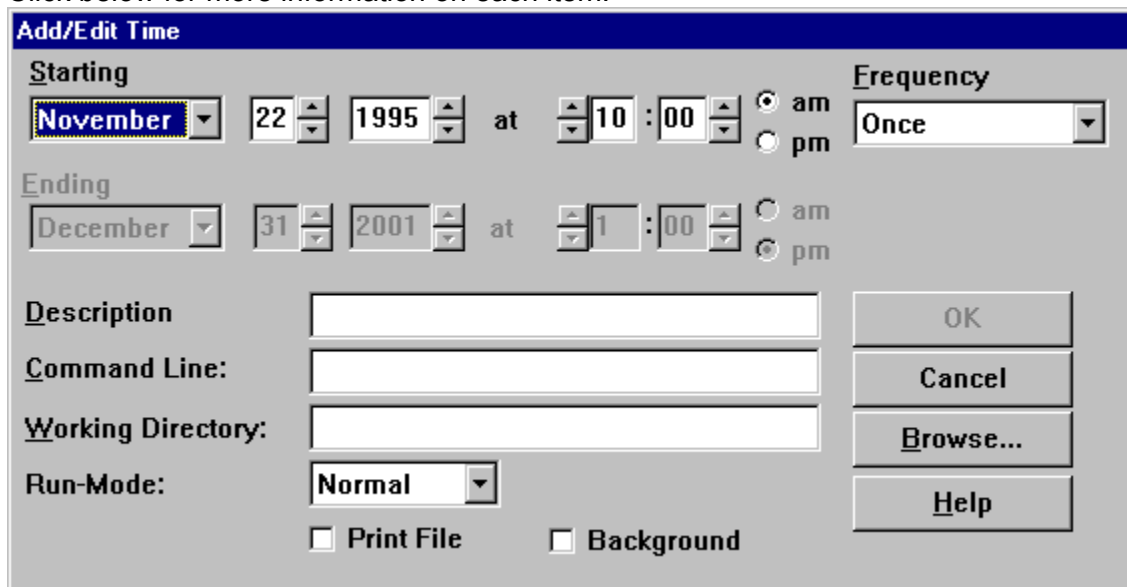
Shows the program name, version number, and copyright information.

Add...

Adds an entry to the list of entries. Enter the date and time that you would like the program to be launched. If you would like the program to be launched on regular intervals, choose one of the intervals, and then set an ending time.

For example: If you chose Daily interval, then the program will launch every day at the same time until it passes the Ending Time. You may specify an entire command line in the Run field. Be sure your system clock is correct because the SQUEDULE program compares the time against your system clock.

Click below for more information on each item.



The dialog box is titled "Add/Edit Time" and contains the following fields and controls:

- Starting:** A date and time selection area. It includes a month dropdown (currently "November"), a day spinner (currently "22"), a year spinner (currently "1995"), the word "at", an hour spinner (currently "10"), a minute spinner (currently "00"), and radio buttons for "am" (selected) and "pm".
- Frequency:** A dropdown menu currently set to "Once".
- Ending:** A date and time selection area. It includes a month dropdown (currently "December"), a day spinner (currently "31"), a year spinner (currently "2001"), the word "at", an hour spinner (currently "1"), a minute spinner (currently "00"), and radio buttons for "am" and "pm" (selected).
- Description:** A text input field.
- Command Line:** A text input field.
- Working Directory:** A text input field.
- Run-Mode:** A dropdown menu currently set to "Normal".
- Print File:** A checkbox.
- Background:** A checkbox.
- Buttons:** Four buttons are located on the right side: "OK", "Cancel", "Browse...", and "Help".

To edit an entry after you have added it you may open the Edit File Settings dialog box by double-clicking on the file whose settings you wish to edit, pressing the **ENTER** key when the file is selected, or clicking Edit from the Configure menu.

Association Warning

When this option is checked (default) SQUEDULE will warn you that the specified file is not associated with any application. You will get this warning when you add a file that has no association and when SQUEDULE attempts to run a command line that has no association.

To associate a file extension with a program, choose **Associate** from File Manager's **File** menu.

Background

When this option is enabled, the program that is executed will be executed in the background. The application you are currently using will remain the active window. Note, the Background option is not available if the Run Mode is set to MAXIMIZE.

Browse

The Browse option lets you select a program to execute from anywhere on any disk drive. Simply select the file, click OK and it will appear in the Command Line field.

Change a Program's Schedule

To change a program's schedule you must edit the appropriate entry in the SQD file. Follow these steps to do so:

1. Click **File**
2. Click **Open...**
3. Double-click the SQD file that contains the entry you wish to change.
4. Select the entry you wish to change
5. Click **Edit** from the **Configure** menu.

You may also double-click the entry you wish to change, or simply press Enter when it is selected.

Command Line

This field contains the program that you want to execute. This field may contain either an executable file or any other file that has an association.

For example, if you put README.TXT in this field it would execute notepad.exe and load up readme.txt.

Commands

File

Edit

Configure

Help

Configure

Add...

Edit...

Delete...

Test Entry

Settings...

Association Warning

Hide Icon

Contents

Overview

Requirements

How To...

Commands

Technical Support

Copy

The selected entry will be placed in a private clipboard, and can be pasted (duplicated). It cannot be pasted to another instance of SQUEDULE or into another Windows program.

Cut

Removes the selected entry from the list. It will be placed in a private clipboard, and can be pasted. It cannot be pasted to another instance of SQUEDULE or into other Windows applications.

Delete...

Deletes the entry that is selected.

Description

This field contains a short description of the program entry. This field is what will be displayed at the main window. If you leave this field blank it will default to the program name.

Edit

Cut

Copy

Paste

Edit...

The Edit dialog box enables you to change when and how you would like your application to run.

Click below for more information on each item.

Add/Edit Time

Starting
November 22 1995 at 10:00 am
pm

Ending
December 31 2001 at 1:00 am
pm

Frequency
Daily

Description
Open my journal

Command Line:
c:\mydocs\erik.txt

Working Directory:
c:\mydocs\

Run-Mode:
Maximized

☐ **Print File** ☐ **Background**

OK
Cancel
Browse...
Help

The Edit File Settings dialog box can also be activated by double-clicking on the file whose settings you wish to edit or by hitting the ENTER key when on the selected file.

Ending Time

The Ending Time fields allow you to specify when SQUEDULE will no longer execute the program on the specified schedule.

Note that if the application is running and the ending time goes by it will not terminate the program. This time field does not determine the length of the program's execution but rather the time period in which Application Timer will reschedule and execute the program.

Exit

Closes SQUEDULE. Programs will not be launched unless SQUEDULE is running.

File

New

Open...

Save

Save As...

Exit

Frequency

This option allows you to specify how frequently you wish to run the program. The options are:

Once - this will only execute the program once and then the entry will be deleted from the main list.

Every Minute

Every 15 Minutes

Hourly

Daily

Weekdays

Weekly

Monthly

Month End

Help

[Help Contents](#)

[Search for Help on...](#)

[How to Use Help](#)

[About](#)

Help Button

Click the Help button to get help.

Help Contents

Calls the help file for SQUEDULE, and sets it to the first page.

Hide Icon

If you select this option, SQUEDULE will "hide" itself 10 seconds after it is minimized.

Note: There is no way to shut down the program after it has been hidden.

How To...

Schedule a Program

Unschedule a Program

Change a Program's Schedule

Set the Frequency

Run DOS Programs

Launch Programs on Regular Intervals (Daily, Weekly, etc.)

How to Use Help

Shows you how to use this help program.

Launch Programs Daily or Weekly

If you plan to use SQUEDULE for Daily or Weekly program launching, you should have SQUEDULE automatically load when you run Windows.

To have SQUEDULE automatically launch when Windows 3.x or NT starts:

1. In File Manager associate the .SQD extension with the SQUEDULE.EXE program.
 2. Edit your WIN.INI file, putting your .SQD file on the load= line.
Example: load=C:\SQURL\RUNAUTO.SQD Where RUNAUTO.SQD is your SQUEDULE file and is located in the SQURL directory on the C: drive.
- The program does not have to be the foreground task to launch applications.

To have SQUEDULE automatically launch when Windows 95 starts:

1. Click the Start button.
2. Click Settings.
3. Click Taskbar.
4. Click the Start Menu Programs tab.
5. Click Add.
6. Click Browse.
7. Locate the program you want to start, and then double-click it.
8. Click Next, and then double-click the StartUp folder.
9. Type the name that you want to see on the StartUp menu, and then click Finish.
If Windows prompts you to choose an icon, click one, and then click Finish.

New

Clears all of the entries and readies the program for a new list of schedule entries.

OK

Click OK to signify that you are done and wish to save your changes.

Open...

Opens a SQD file. The extension for SQUEDULE is .SQD Entries that have already expired will not be loaded from the file.

Overview

The SQUEDULE program launches programs at a specified time, or on regular intervals. It can be used to automate backups, asynchronous communications, CPU intensive calculations, etc. It is an easy program to use. Just set the time, date and the program to be launched, and as long as the SQUEDULE program is running (normal, minimized or hidden), it will launch your program. It will launch DOS programs as well as Windows programs. SQUEDULE can Print files in addition to executing them.

If you plan to use SQUEDULE for Daily or Weekly, or regular program launching, you should load program automatically when you run Windows.

The program is designed to run under Windows 3.x, Windows 95, and Windows NT and use a minimal amount of CPU time. You may set the frequency for which the computer checks for a program to launch. The recommended time is 100 (1 second). With the default setting, you will probably not notice any slowdown on the system. If your computer experiences any slowdown, or your operations are not time critical operations, you may want to increase the number.

Paste

Will paste an entry which has been cut or copied from the private clipboard to the list of entries.

Print

When this option is selected SQUEDULE will print the file in the Command Line field instead of executing it.

Requirements

To use the SQUEDULE program you must have computer running Windows 3.x, Windows 95, or Windows NT. The program works best on a 386 or faster processor under Windows 95 or Windows 3.x in Enhanced Mode. If you have a 286, be aware that if you launch a DOS program, the DOS program will take control of the machine, and the Application Timer will not be able to launch other programs until the DOS program has been either iconized or exited. For those who have a 386 or faster computer, the same thing is true for those programs that run in exclusive mode.

Run DOS Programs

Under Windows 3.x and NT

Set up a .PIF (Program Information File) file that runs the DOS program. Use the PIF Editor supplied with Windows. When adding an entry in SQUEDULE, use the name of the .PIF file. See your Windows guide or PIFEDIT.HLP for more information on setting up a .PIF.

Under Windows 95

When adding an entry in SQUEDULE, use the name of the executable. Windows 95 will run it whether it is a DOS or Windows program.

Run Mode

The Run Mode option allows you to select the way in which the program to be execute will be run. The options are Normal, Minimized, Maximized.

Note: DOS programs will run in the mode set in the .PIF file for that executable regardless of the setting selected here.

Save

Saves a previously named .SQD file. This option will be disabled if a name has not been given to the file. Use Save As... the first time the file is saved.

Save As...

Use the Save As... command under the File menu to name and save a SQUEDULE file. The default extension is .SQD.

Schedule a Program

To schedule a program you must add an entry to a SQD file. Follow these steps to do so:

1. Choose **Add** from the **Configure** menu or simply drag the file you wish to execute into SQUEDULE.
2. Fill in the Starting Date and Time.
3. If you would like the program to be launched on regular intervals, choose one of the Frequency intervals and set and ending time.

For example: If you chose Daily interval, then the program will launch every day at the same time until it passes the Ending Time.

4. Unless you have dragged the file into SQUEDULE, you must also enter the command line to be run. You can click Browse to find the file and have the command line entered automatically.
5. You can also enter a description, a working directory, change the Run Mode, choose to print the file instead of executing it, or choose to have the program executed in the background.
6. Do not forget to save your entry(ies) in a SQD file.

Be sure your system clock is correct because the SQUEDULE program compares the time you specify against your system clock.

See Configure for more information.

Search for Help on...

Allows you to search for the topic of interest.

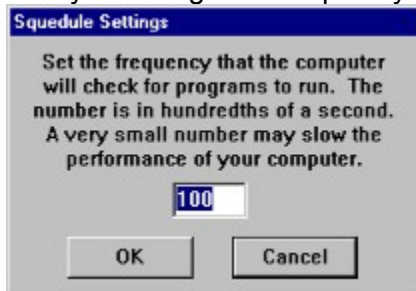
Set the Frequency

You may set the frequency for which the computer checks for a program to launch. The recommended time is 100 (1 second). With the default setting, you will probably not notice any slowdown on the system. If your computer experiences any slowdown, or your operations are not time critical operations, you may want to increase the number. To set the Frequency, follow these steps:

1. Click **Settings...** from the **Configure** menu.
2. Enter the new value
3. Click OK.

Settings...

Lets you change the frequency that SQUEDULE checks to see if something needs to be run.



The number is in hundredths of a second. It is initially set to one second. If it slows down your computer, you may move this number up. You may also want to move this number up if it is not important that your applications are run the very second that they are supposed to.

Starting Time

You can specify when the selected program will begin executing on the specified schedule using the Starting Time options. Once this time has passed SQUEDULE will begin executing the program based upon the Frequency setting.

Technical Support

Free Technical Support is available via E-mail. Send all Technical Support problems and questions to **support@bluesquirrel.com**. To purchase other forms of technical support visit our web page at **<http://www.bluesquirrel.com>** or call us.

Test Entry

This option allows you to test the entry. It will execute the program just as if the scheduled time had arrived. It will not affect the scheduled execution time in any way.

Unschedule a Program

To unschedule a program you must delete the appropriate entry in the SQD file. Follow these steps to do so:

1. Click **File**
2. Click **Open...**
3. Double-click the SQD file that contains the entry for the program you wish to unschedule.
4. Select the entry you wish to delete
5. Click **Delete...** from the **Configure** menu.

Note: You will not be asked for a confirmation.

Working Directory

This field lets you set the working directory for the program you are executing. SQUEDULE will go to this directory prior to executing the command line in the Command Line field.

Cancel

Click cancel to signify that you are done and wish to discard your changes.

