

Labelprint 2.5

The ultimate program to make labels for 3.5" disks

- You can print a maximum of 8 disklabels on one page.
- Each of the labels can contain 5 lines of text.
- The fonts for the textlines can be chosen from all the fonts you have installed in Windows.
- While you are editing a label you can see a preview of what the label will look like on paper.

for more information, choose one of the options below:

[Main Window](#)

[Label Window](#)

[Printing](#)

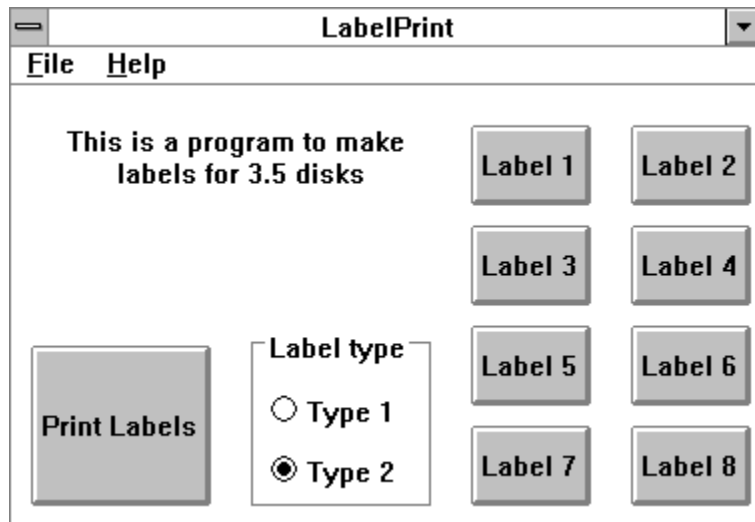
[Credits](#)

Main window

In this window you can:

- choose which label to edit
- print the labels
- choose the type of label
- load, save and delete all the labels
- get help

Pressing on any part of the window below will get you help about that subject.



Label Window

This is the window used for the editing of each label, here you can:

- edit the text for the different lines of the label
- set the font for the lines of text
- clear the label
- view a preview of the label
- copy contents from another label

Pressing on any part of the window below will get you help about that subject.

| Label 1 | | |
|--|--|-------------------------------------|
| | <input type="radio"/> left <input checked="" type="radio"/> middle <input type="radio"/> right | |
| Title | <input type="text"/> | <input type="button" value="Font"/> |
| | <input type="radio"/> left <input checked="" type="radio"/> middle <input type="radio"/> right | |
| 1st line | <input type="text"/> | <input type="button" value="Font"/> |
| | <input type="radio"/> left <input checked="" type="radio"/> middle <input type="radio"/> right | |
| 2nd line | <input type="text"/> | <input type="button" value="Font"/> |
| | <input type="radio"/> left <input checked="" type="radio"/> middle <input type="radio"/> right | |
| 3rd line | <input type="text"/> | <input type="button" value="Font"/> |
| | <input type="radio"/> left <input type="radio"/> middle <input checked="" type="radio"/> right | |
| Number | <input type="text"/> | <input type="button" value="Font"/> |
| <input type="button" value="Clear"/> <input type="button" value="Preview"/> <input type="button" value="Copy from"/> <input type="button" value="OK"/> <input type="button" value="Cancel"/> <input type="button" value="Help"/> | | |

Printing

PAPER:

- I print my dikslabels on self-sticking full-page labels that you can buy.

When you have printed your labels, you just cut the page into pieces and stick the labels on your disk.

- Using the printing offsets, it should be possible to use precut labels, if you can find labels that are 7cm high and wide.

NUMBER OF LABELS ON A PAGE:

This depends on two things

- the papersize you use:

If you use A4-size paper it is possible to put 8 labels on one page.

Using legal-size paper (America and Canada...) you probably will get only 6 labels on one page.

You should check this out before you use label 7 and 8.

- the printing offsets:

Using the *print Offset*-option from the file-menu you can determine where the labels will be printed on your paper.

If you use the label-offset it will probably be difficult to fit 8 labels on page.

PRINTER SETUP:

You can change your printer-setup using the *Printer setup*-option from the file-menu

Credits

this program is **POSTCARDWARE**.

this means that it is completely free for you to use.

I still own the copyright, but you can use and distribute it as much as you like.

If you like the program, I would like to receive a postcard from you, just to know how other people like my program.

Of course, I can't stop you from sending me lots of money...

All your gifts will be spent on a good cause.

If you use this program professionally, a donation would be appreciated. (think of all the time, money and work this program saves you)

-remarks and bugs you find are also welcome at:

Kurt Van den Branden

Schoofland 49

9120 Beveren

Belgium

(internet e-mail adress : **kvd2@bipsy.se.bel.alcatel.be**)

Other credits:

- the helpfile was constructed using

Help Pre-Compiler v3.0

by Antonio Cordero Balcazar

- list of beta-testers

Peter Lindgren <O.P.Lindgren@telub.se>

Ed Adams <adams@loretta.la.ca.us>

Peter T. Lyman <lyman@SpaceSoft.Com>

Mike Houwers <mwh5795@cs.rit.edu>

Sergio Sartor <SSARTOR@trentu.ca>

<msca006@eee.bham.ac.uk>

Sergi Maicas i Prieto <MAICAS@VM.CI.UV.ES>

<Miguel.Marin@uv.es>

<Chemi@uv.es>

Ron Gerald Landmann <landmann@csa.bu.edu>

Faisal Islam <ISLAM@CC1.UNT.EDU>

Richard DuBou <rdubou@iglou.com>

Renaud S. LeBlanc <leblanre@umoncton.ca>

<IsmaelV102@aol.com>

Vitor Faustino Pereira <VITOR@BRFUEL.BITNET>

- people who sent a postcard. (this list should be a lot longer)

Ned Chilmonik
Rebecca Prelutsky
Bill Fuchs
Andre Teig
Peter Barends

- Also thank you to all the other people who reacted

File menu

New

Clear all the labels and reset the fonts to the default-font.

Save labels

Save all the labels you have created in a file for later use (file-extension: *.lbl)

Load labels

Load labels from a file.

Overwrite all the labels that your are working on.

Printer setup

Change printer setup.

This is only for this application, these changes are not saved.

print Offset

This option will open a dialog.

In the dialog you can specify the exact place where your labels will be printed on paper.

The default-value for *Horizontal base-offset* and *Vertical base-offset* are determined from your printer.

You can't enter a lower value because your printer will not print it.

(This means that these values are probably different for every printer, and even for different printer-drivers for the same printer)

You can enter the offsets in *cm* or *inch*.

set Defaultfont

Set defaultfont used by labelprint.

this is the font used for *Write Protect* and *Write Enable*
and for the title on the side of the disk.

You can also choose this font for all the text in all the labels.

Exit

Leave Labelprint

Help menu

Help

Start the helpfile you are reading now

About

The usual dialog to satisfy the programmer's ego.

Print label

Press this button if you are sure you want to print your labels.

Label type

Use these radiobuttons to select the type of labels you want to make.
This setting can be changed at any moment.



Type 1



Type 2

These buttons correspond to the 8 labels you can print at the same time.
Pressing one of these will open the editwindow for the corresponding label.

Title line

Input window for the label title.

This is also the text that will be put on the side of the label.

If there is **nothing** in this label, then it won't get printed on paper.
(nothing means: not even spaces.)

1st line of the label

2nd line of the label

3rd line of the label

Number line

ideal to put a number on your labels.

You can use it for text to, but it will be right justified.

Clear

This button will clear the label you are working on and reset all the fonts to the default font. Cancel can still undo this.

Preview

Pressing this button will refresh the preview of the label.

Copy from

Copy the contents of one of the other 7 labels to this label.

You get a dialog allowing you to choose one of the other labels.

The contents of your current label are lost and get replaced (text and fonts) by the contents of the chosen label.

OK

Keep the changes you made to the current label and return to the main window.

Cancel

Discard the changes you have made to this label and return the main window.

Help

Help for editing a label

Font

This button allows you to choose a font for the text on your label.
You can use every truetype-font installed on your system.

