

# Layout

## A Desktop Arranger for Windows 3.0

Mark D. Grosen  
August 1990

### Introduction

*Layout* is a utility for automatically arranging your desktop under Windows 3.0. It allows you to arrange your application windows and then save their positions and sizes to a file. Later, *Layout* can read this file and restore your windows to their original arrangement. You can keep several *Layout* files for each of your different desktop configurations. You can have *Layout* run at startup, so that every time you start Windows, your desktop will start in the same configuration.

### Installation

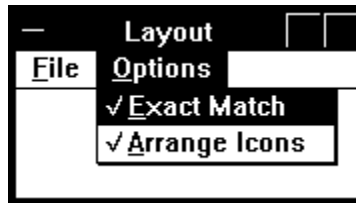
To install *Layout*, simply copy the file `layout.exe` to a directory in your path. A logical place is your Windows directory. *Layout* will look for files you have saved (with the default extension `.lay`) along your path when you run it later to restore your desktop.

### Saving Screen Layouts

*Layout* has two modes of operation: capturing the screen layout and restoring the layout. In the first mode, you run *Layout* with no arguments. You can do this from *Program Manager* or *File Manager*. After you have arranged your desktop to your liking, choose the File Save command. A message will prompt you to click on the window that will be made active when *Layout* is run later to restore your screen. (The active window is the top window that has the input focus). The cursor will change to a cross-hair while you are choosing a window. A dialog box will then prompt you for a filename in which to save the configuration.

There are two options that affect the way *Layout* will restore your desktop arrangement.

## - Layout -



The Exact Match option determines if a window must have the same window caption (the text in the bar above the menu) as the window caption in the Layout file. If Exact Match is checked, *Layout* will not adjust windows that are the same application, but have different captions.

For example, suppose you have several configurations for the Windows *Terminal* program. When you use *Terminal*, the name of the configuration file is listed in the caption. A typical caption might be **Terminal - UNIX.TRM**. If you save a Layout configuration with this caption and Exact Match checked, *Layout* will not adjust a *Terminal* window that has the caption **Terminal - BBS.TRM**. However, if you disable Exact Match, *Layout* will attempt to find any *Terminal* window and adjust its location and size to that in the saved *Layout* file.

The second option specifies if *Layout* will arrange the iconified windows after it arranges the open windows. This action is equivalent to bringing up the *Task List* utility and choosing the Arrange Icons command. Note that *Layout* does not save iconified windows positions (or its own position).

## Restoring Screen Layouts

After you have saved a desktop layout, you can retrieve it using the File Open command. A standard Windows file dialog box will allow you to select a file that will then be used to rearrange your screen to the layout specified in that file. (*Layout* will not adjust windows that it cannot match with descriptions in the *Layout* file.)

You can also have *Layout* run automatically when you double-click on a file with a `.lay` extension in *File Manager* by adding a line in the [Extensions] section of your `win.ini` file. The excerpt below shows an example. (Use *Notepad* or *Sysedit* to edit your `win.ini` file.)

```
[Extensions]
cal=calendar.exe ^.cal
crd=cardfile.exe ^.crd
```

## - Layout -

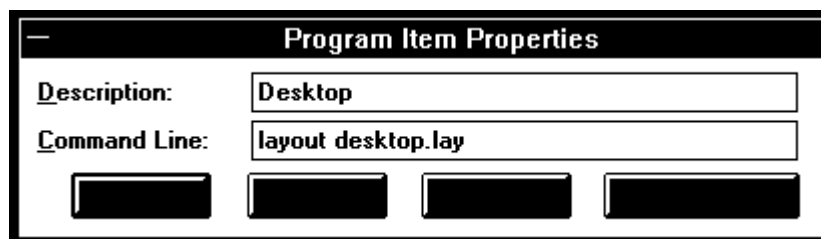
```
trm=terminal.exe ^.trm
txt=notepad.exe ^.txt
ini=notepad.exe ^.ini
pcx=pbrush.exe ^.pcx
bmp=pbrush.exe ^.bmp
wri=write.exe ^.wri
rec=recorder.exe ^.rec
lay=layout.exe ^.lay
```

You can also restore a screen arrangement by simply running *Layout* with the name of a *Layout* file saved earlier. There are two easy ways to do this: add a program item in *Program Manager* or add a *Layout* file to the `run` line in your `win.ini` file.

After you have saved a configuration in a *Layout* file, you can have it restored each time you start Windows by putting the name of the file as the last entry on the `run` line in your `win.ini` file. (Note this depends on having put the *Layout* extension in your `win.ini` file.) For example, if you have a layout in the file `desktop.lay`, you could use the following line to have it used each time Windows is started.

```
run=write clock unix.trm desktop.lay
```

Finally, you can use *Program Manager* to associate different screen configurations with the *Layout* program icon. Add a program item using an entry similar to the one below. (Note that you must specify the `.lay` extension.)



## Miscellaneous

*Layout* is Copyright © 1990 by Mark D. Grosen. This program may be freely distributed. The author will not be liable for damages caused by the use of this program.

**- Layout -**

Comments or suggestions may be sent via email to  
`grosen@amadeus.ucsb.edu`. or by mail to:

Mark D. Grosen  
416 Mills Way Apt. B  
Goleta, CA 93117