









# CONTENTS

## Installing the Driver

 [To Install the Driver](#)

## Configuring the Driver

-  [EM960 PCI Ethernet Adapter](#)
-  [EM964 PCI Quartet Ethernet Adapter](#)
-  [EM110 T4 PCI and EM110 T4 PCI Combo](#)
-  [Quartet/440 T4](#)
-  [EM100 TX PCI](#)
-  [EM110 TX PCI and EM110 TX PCI Combo](#)
-  [Quartet/400 TX](#)
-  [EM100 FX PCI Fiber](#)

## Quartet Adapters and PCI Bridge Chip Support

 [PCI Bridge Chip Support](#)

For Help on Help, Press F1

## EM960 PCI Ethernet Adapter

The EM960 PCI Windows NT 3.5x driver supports several connection type parameters which set the adapter's cable to the specified cable type. The following network connection parameters are available.

[AutoSense/Half Duplex](#)

[AutoSense/Full Duplex](#)

[10 Mbps UTP](#)

[10 Mbps UTP/Full Duplex](#)

[Thin](#)

[Thick](#)

## EM964 PCI Quartet Ethernet Adapter

The EM964 PCI Quartet Windows NT 3.5x driver supports several connection type parameters which set the adapter's cable to the specified cable type. The following network connection parameters are available.

### **Note**

Windows NT driver parameters must be the same for all channels on a single board.

[AutoSense/Half Duplex](#)

[AutoSense/Full Duplex](#)

[10 Mbps UTP](#)

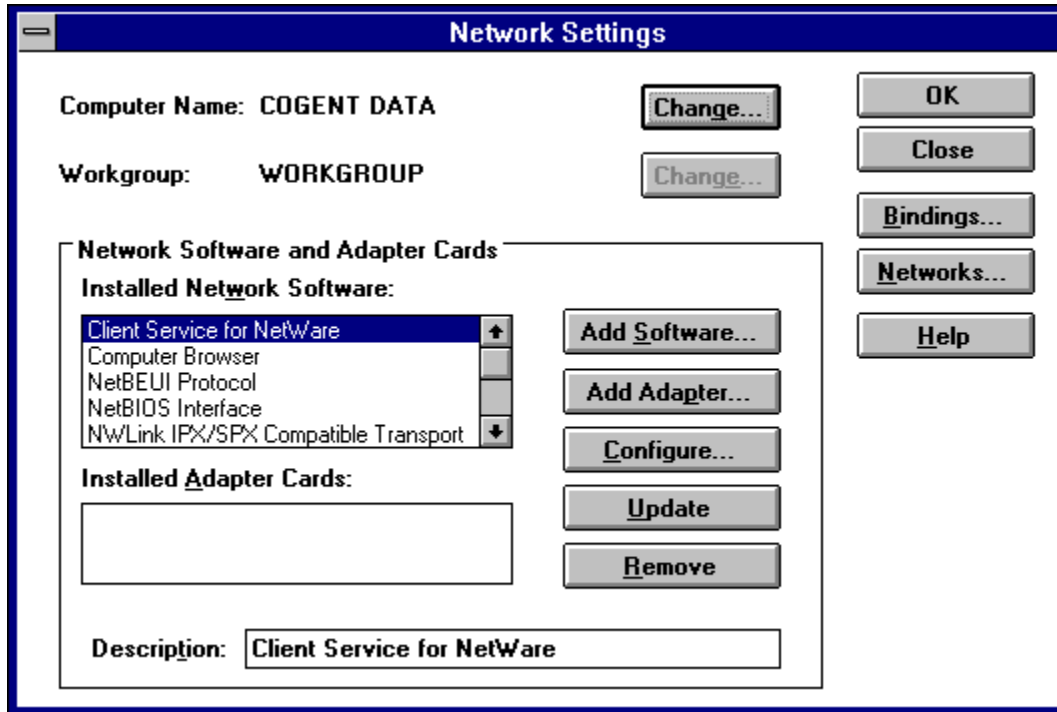
[10 Mbps UTP/Full Duplex](#)

[Thin](#)

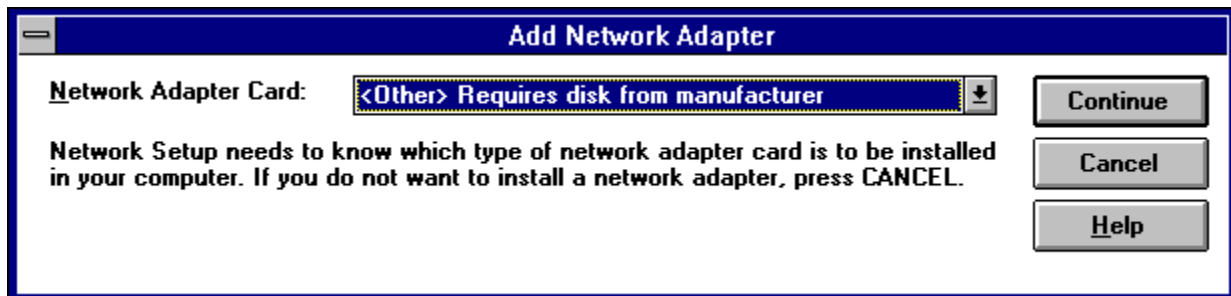
## To Install the Driver

The Windows NT driver supports both Windows NT 3.50 and 3.51. The following instructions describe installing the Windows NT driver for your Cogent Ethernet adapter.

1. In Control Panel, double-click the Network icon.
2. In the Network Settings dialog box, choose the Add Adapter button.

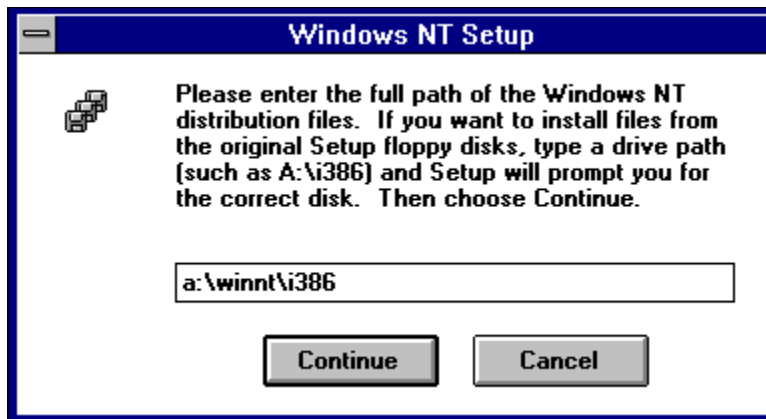


3. From the Add Network Adapter dialog box, choose the <Other> option, which is at the end of the list of displayed adapters.



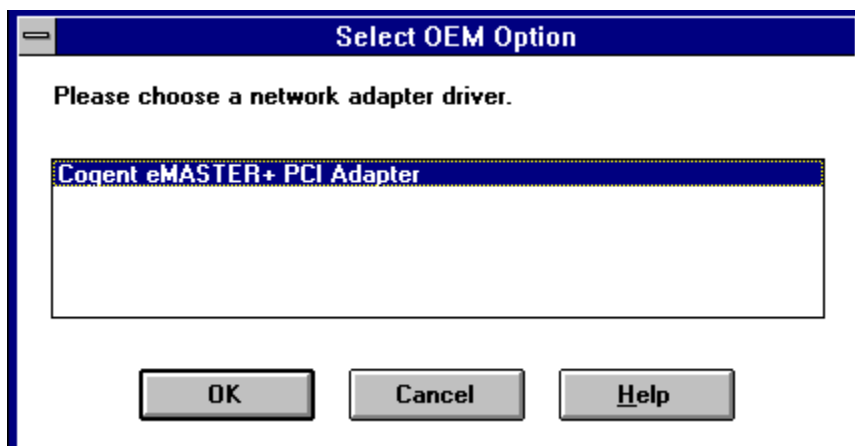
4. Insert the EMASTER+ setup diskette in drive A:.
5. Specify the path to your EMASTER+ adapter diskette.

The driver for Intel platforms is located in the \WINNT\ALPHA directory; the driver for Alpha platforms is located in the \WINNT\ALPHA directory.

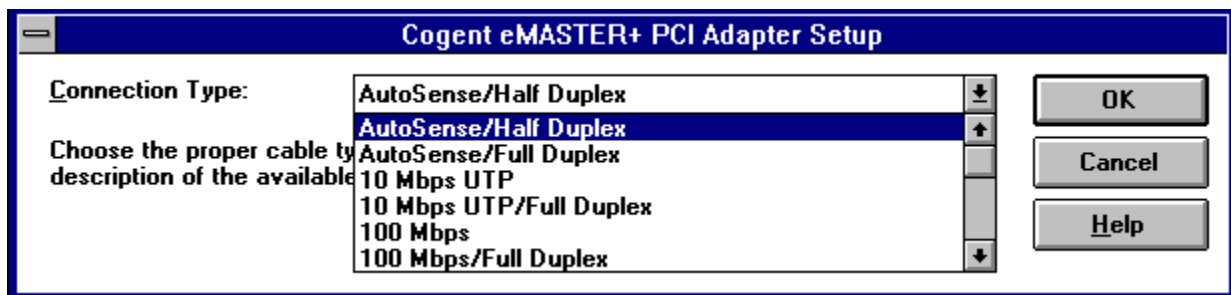


6. In the Select OEM Option dialog box, select your Cogent adapter and choose the OK button.

You will be offered the following list:



7. When prompted, choose your cable type from the displayed list.



8. Choose OK.
9. When prompted, restart your computer. After Windows NT restarts, you will be able to use your new eMASTER+ adapter.

**Note**

To install the Windows NT 3.5x driver for EM964 PCI Quartet, Quartet/400, or Quartet/440 adapter on an Intel-based machine, your computer must support [PCI bridges](#).

**Note**

When the Windows NT 3.5x driver is installed for Quartet adapters, the driver automatically creates four ports even if all four ports are not in use. In addition, support for all EMASTER+ PCI adapters present in the system is installed automatically.

## **AutoSense/Half Duplex**

Indicates that the adapter will automatically detect the cable type. For 10/100 adapters, the adapter will automatically detect the correct line speed. **AutoSense/Half Duplex** does not detect Full Duplex Ethernet (FDE).

## **AutoSense/Full Duplex**

Indicates that the adapter will automatically detect the cable type. For 10/100 adapters, the adapter will automatically detect the correct line speed. **AutoSense/Full Duplex** requires connection to a device supporting Full Duplex Ethernet (FDE).



## **Thick**

Sets the cable type to Thick (AUI) cabling.

## **10 Mbps/Full Duplex**

Enables Full Duplex Ethernet for 10 Mbps on twisted pair cabling. Requires use of an FDE switching hub.

## **100 Mbps**

Sets the adapter's cable type to twisted pair and 100 Mbits/sec. Fast Ethernet. This option does not enable Full Duplex.

## **100 Mbps/Full Duplex**

Enables Full Duplex Fast Ethernet. Requires use of a Full Duplex Fast Ethernet switching hub.

## **Thin**

Sets the cable type to Thin (BNC) and 10 Mbits/sec. Thin Ethernet does not support Full Duplex.

## **10 Mbps UTP**

Sets the adapter's cable type to twisted pair and 10 Mbits/sec. Fast Ethernet. This option does not enable Full Duplex

## **Add Adapter**

Click this button to install the driver for your eMASTER+ adapter.

## PCI Bridge Chip Support

A PCI Bridge Chip is a chip on the Quartet adapter that expands the number of logical slots available on a PCI bus. The PCI Bridge Chip is fully defined and supported in the PCI Specification version 2.0.

To use adapters with PCI Bridge chips, Windows NT requires that the computer's BIOS support the PCI Bridge chip. Some computer BIOS's do not support PCI Bridge chips.

You can run Quartet's EMSETUP program to find out if your computer's BIOS supports the PCI Bridge chip, as follows:

1. Boot your system to MS-DOS 3.3 or later
2. Insert the eMASTER+ setup diskette into a diskette drive. Make that drive the active drive by typing:  
a: [ENTER]
3. To start EMSETUP, type:  
EMSETUP [ENTER]
4. From the Main Menu of EMSETUP, choose 'PCI Device Information.' If you receive the following message, your system does NOT support the PCI Bridge chip:  
"Your system's BIOS does not directly support PCI bridges. EMSETUP has configured the system for you. Please note the resources it has assigned. You may need these values when configuring the network driver."  
  
To fix the problem, contact your computer manufacturer to obtain a BIOS upgrade that does support the PCI Bridge chip.



## Choose Cable

Choose the cable type from this pull-down list that you will use with your eMASTER+ adapter.

If you want to enable Full Duplex, be sure to pick one of the Full Duplex selections.

## **Driver Location**

Enter the diskette location of the driver you wish to use with your adapter.

### **For Intel Platforms**

\\WINNT\\i386

### **For Alpha Platforms**

\\WINNT\\ALPHA

### **For MIPS and PowerPC Platforms**

Windows NT drivers for these platforms are available for some adapters. Contact Cogent Technical Support for details.

## **Select <Other>**

Select the <Other> option from the end of this pull-down list. Afterwards, you will be required to insert the eMASTER+ diskette into your diskette drive.

## Select OEM Option

All of Cogent's PCI adapters use the same Windows NT driver. So, you are only given one adapter driver to choose from in this list. Simply accept the displayed adapter in this box.

## EM100 TX PCI

The EM100 TX PCI adapter supports 100 Mbps Fast Ethernet and 200 Mbps Full Duplex Fast Ethernet on CAT 5 UTP cable.

The driver supports several connection type parameters which set the adapter's cable to the specified cable type. The following network connection parameters are supported.

[AutoSense/Half Duplex](#)

[AutoSense/Full Duplex](#)

[100 Mbps](#) (CAT 5 UTP)

[100 Mbps Full Duplex](#) (CAT 5 UTP)

## EM110 TX PCI and EM110 TX PCI Combo

The EM110 TX PCI and Combo adapters support 10 Mbps Ethernet and 20 Mbps Full Duplex Ethernet on CAT 3, 4, or 5 UTP cable. They also support 100 Mbps Fast Ethernet and 200 Mbps Full Duplex Fast Ethernet on CAT 5 UTP cable. In addition, the Combo model includes a BNC connector for 10 Mbps Ethernet over Thinnnet cable.

The driver supports several connection type parameters which set the adapter's cable to the specified cable type. The following network connection parameters are supported.

[AutoSense/Half Duplex](#)

[AutoSense/Full Duplex](#)

[10 Mbps UTP](#) (CAT 3, 4, or 5 UTP)

[10 Mbps UTP/Full Duplex](#) (CAT 3, 4 or 5 UTP)

[100 Mbps](#) (CAT 5 UTP)

[100 Mbps Full Duplex](#) (CAT 5 UTP)

[Thin](#) (for Combo model)

## EM110 T4 PCI and EM110 T4 PCI Combo

The EM110 T4 PCI and Combo adapters support 10 Mbps Ethernet and 20 Mbps Full Duplex Ethernet on CAT 3, 4 or 5 UTP cable. They also support 100 Mbps Fast Ethernet on CAT 5 UTP cable. In addition, the Combo model includes a BNC connector for 10 Mbps Ethernet over Thinnet cable.

The driver supports several connection type parameters which set the adapter's cable to the specified cable type. The following network connection parameters are supported.

[AutoSense/Half Duplex](#)

[AutoSense/Full Duplex](#)

[10 Mbps UTP](#) (CAT 3, 4, or 5 UTP)

[10 Mbps UTP/Full Duplex](#) (CAT 3, 4, or 5 UTP)

[100 Mbps](#) (CAT 5 UTP)

[Thin](#) (Combo Model)

## Quartet/400 TX

The EM400 TX PCI Quartet/400 adapter supports 100 Mbps Fast Ethernet and 200 Mbps Full Duplex Fast Ethernet on CAT 5 UTP cable.

The driver supports several connection type parameters which set the adapter's cable to the specified cable type. The following network connection parameters are supported.

### **Note**

Windows NT driver parameters must be the same for all channels on a single board.

[AutoSense/Half Duplex](#)

[AutoSense/Full Duplex](#)

[100 Mbps](#) (CAT 5 UTP)

[100 Mbps/Full Duplex](#) (CAT 5 UTP)



## Quartet/440 T4

The EM440 T4 PCI Quartet/440 adapter supports 10 Mbps Ethernet and 100 Mbps Fast Ethernet on CAT 3, 4, and 5 UTP cable.

The driver supports several connection type parameters which set the adapter's cable to the specified cable type. The following network connection parameters are supported.

### **Note**

Windows NT driver parameters must be the same for all channels on a single board.

[AutoSense/Half Duplex](#)

[AutoSense/Full Duplex](#)

[10 Mbps UTP](#) (CAT 3, 4, or 5 UTP)

[10 Mbps UTP/Full Duplex](#) (CAT 3, 4, or 5 UTP)

[100 Mbps](#) (CAT 3, 4, or 5 UTP)

## **EM100 FX Fiber Fast Ethernet Adapter**

The EM100 FX PCI Fiber Fast Ethernet adapter supports 100 Mbps Fiber Fast Ethernet and 200 Mbps Full Duplex Fast Ethernet on 62.5/125 micron multimode fiber optic cable. This adapter can be cabled across distances of up to 400 meters in half-duplex mode, and up to 2 kilometers in Full Duplex mode.

The driver supports several connection type parameters which set the adapter's cable to the specified cable type. The following network connection parameters are supported.

[AutoSense/Half Duplex](#)

[AutoSense/Full Duplex](#)

[100 Mbps](#)

[100 Mbps/Full Duplex](#)

