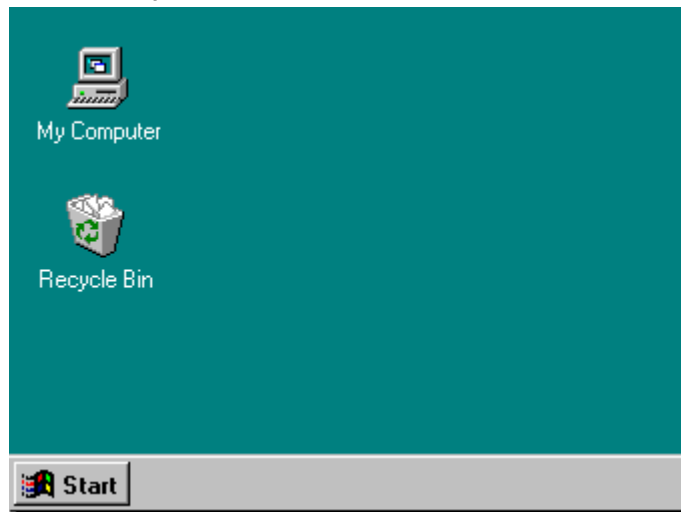


If you've used Windows before: answers to common questions

To find out how Windows has changed, click one of the buttons below.

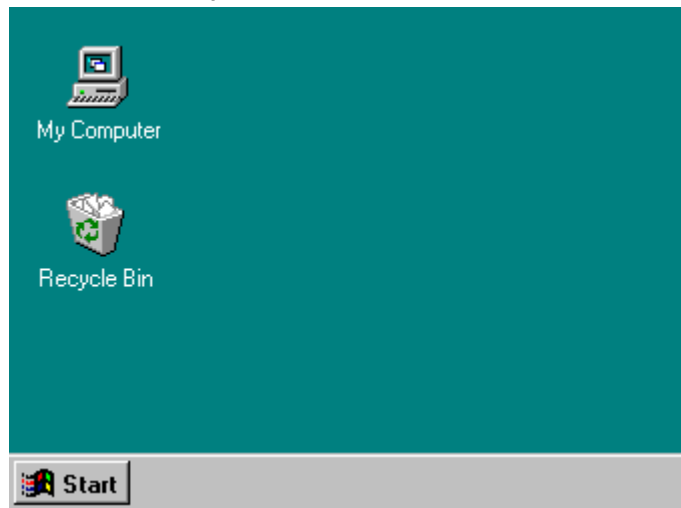
- ☐ [How do I start programs?](#)
- ☐ [What happened to my Program Manager groups?](#)
- ☐ [What happened to File Manager?](#)
- ☐ [What happened to Control Panel?](#)
- ☐ [More questions and answers](#)



If you've used Windows before: more answers to common questions

To find out more about how Windows has changed, click one of the buttons below:

- ☐ [Where did the MS-DOS prompt go?](#)
- ☐ [What happened to the Run command?](#)
- ☐ [How do I copy files?](#)
- ☐ [How do I switch between tasks?](#)
- ☐ [Back](#)

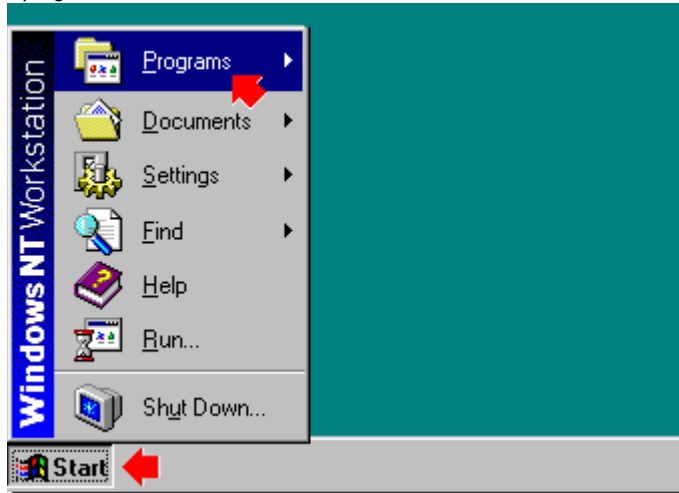


If you've used Windows before: answers to common questions

To find out how Windows has changed, click one of the buttons below:

- ☐ [How do I start programs?](#)
- ☐ [What happened to my Program Manager groups?](#)
- ☐ [What happened to File Manager?](#)
- ☐ [What happened to Control Panel?](#)
- ☐ [More questions and answers](#)

Your programs are in groups just like in earlier versions of Windows. To start a program, click **Start**, point to **Programs**, point to the folder that contains the program you want, and then click the program name.



If you've used Windows before: answers to common questions

To find out how Windows has changed, click one of the buttons below:

- ☐ [How do I start programs?](#)
- ☐ [What happened to my Program Manager groups?](#)
- ☐ [What happened to File Manager?](#)
- ☐ [What happened to Control Panel?](#)
- ☐ [More questions and answers](#)

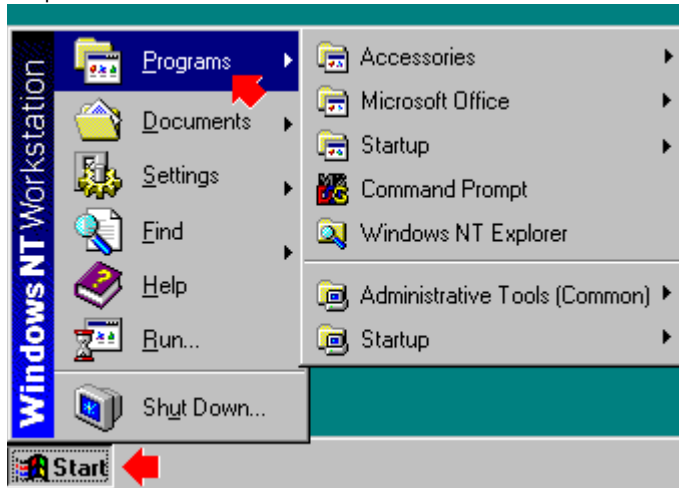
You can find your program groups by clicking the **Start** button, and then pointing to **Programs**. There are two types of program groups:



Indicates Personal program groups that appear above the separator line.



Indicates Common program groups that appear below the separator line.



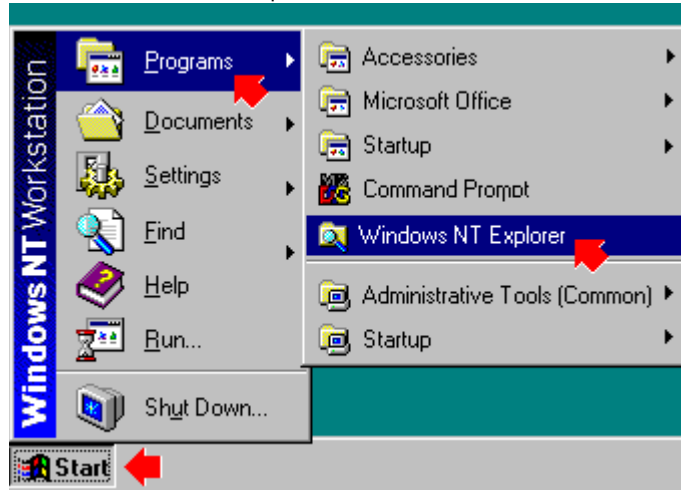
If you've used Windows before: answers to common questions

To find out how Windows has changed, click one of the buttons below:

- ☐ [How do I start programs?](#)
- ☐ [What happened to my Program Manager groups?](#)
- ☐ [What happened to File Manager?](#)
- ☐ [What happened to Control Panel?](#)
- ☐ [More questions and answers](#)

Windows NT Explorer works a lot like File Manager but has the added benefit of displaying all of your drive connections in one window.

To open Windows NT Explorer, click **Start**, point to **Programs**, and then click Windows NT Explorer.

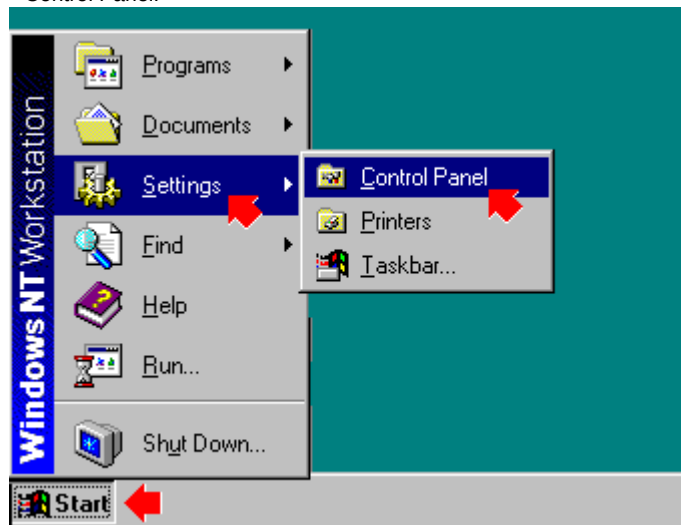


If you've used Windows before: answers to common questions

To find out how Windows has changed, click one of the buttons below:

- ☐ [How do I start programs?](#)
- ☐ [What happened to my Program Manager groups?](#)
- ☐ [What happened to File Manager?](#)
- ☐ [What happened to Control Panel?](#)
- ☐ [More questions and answers](#)

To open Control Panel, click **Start**, point to **Settings**, and then click Control Panel.



If you've used Windows before: more answers to common questions

To find out more about how Windows has changed, click one of the buttons below:

☐ [Where did the MS-DOS prompt go?](#)

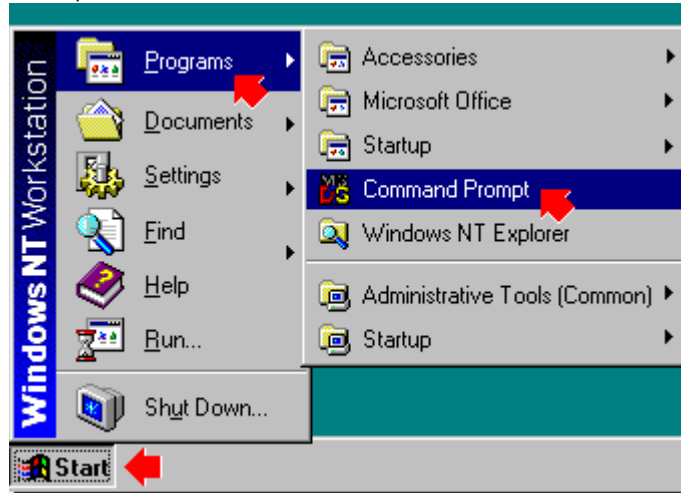
☐ [What happened to the Run command?](#)

☐ [How do I copy files?](#)

☐ [How do I switch between windows?](#)

☐ [Back](#)

The MS-DOS prompt is now called Command Prompt and is located in the Programs folder. To open a Command Prompt window, click **Start**, point to **Programs**, and then click Command Prompt.



If you've used Windows before: more answers to common questions

To find out more about how Windows has changed, click one of the buttons below:

☐ [Where did the MS-DOS prompt go?](#)

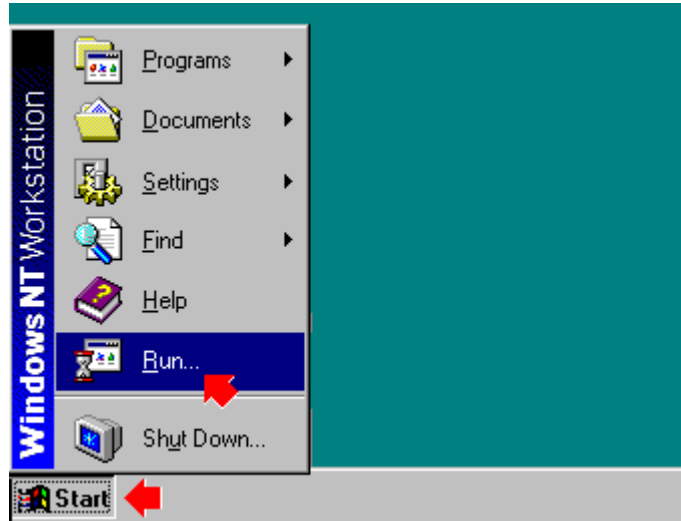
☐ [What happened to the Run command?](#)

☐ [How do I copy files?](#)

☐ [How do I switch between windows?](#)

☐ [Back](#)

To use the **Run** command, click **Start**, and then click **Run**.

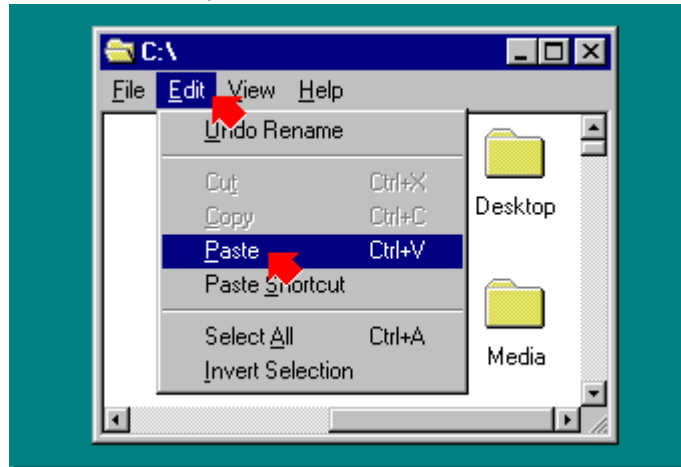


If you've used Windows before: more answers to common questions

To find out more about how Windows has changed, click one of the buttons below:

- ☐ [Where did the MS-DOS prompt go?](#)
- ☐ [What happened to the Run command?](#)
- ☐ [How do I copy files?](#)
- ☐ [How do I switch between windows?](#)
- ☐ [Back](#)

You can copy files the same way you copy and paste text. First, select a file in My Computer or Windows NT Explorer. Click the **Edit** menu, and then click **Copy**. (A dialog box no longer appears.) Open the folder in which you want to put the file you are copying, click the **Edit** menu, and then click **Paste**.



If you've used Windows before: more answers to common questions

To find out more about how Windows has changed, click one of the buttons below:

- ☐ [Where did the MS-DOS prompt go?](#)
- ☐ [What happened to the Run command?](#)
- ☐ [How do I copy files?](#)
- ☐ [How do I switch between windows?](#)
- ☐ [Back](#)

To switch between windows, click the button on the taskbar that represents the window you want to switch to.



This is just an illustration. Click one of the buttons on the left to learn about Windows NT.

You cannot practice here. If you want to try opening Windows NT Explorer, click **Start**.

You cannot practice here. If you want to try opening a program, click **Start** in the lower-left corner of the screen.

You cannot practice here. If you want to view your program groups, click **Start**, and then click **Programs**.

You cannot practice here. If you want to open Control Panel, click **Start**, and then click **Settings**.

You cannot practice here. If you want to use the Command prompt, click **Start**, click **Programs**, and then click Command Prompt.

You cannot practice here. If you want to enter a command by using the **Run** dialog, click **Start**, and then click **Run**.

You cannot practice here. If you want to copy and paste, you must open a document first. If you need more help, click **Start**, and then click **Help**.

You cannot practice here.

Click **Help Topics** to return to the list of topics.

