

WebApp™ Auto-Install Help Contents {ewc HLP256, HLP256_TILE, paper.bmp}

WebApp™ Auto-Install is a utility program designed to let you automate the process of installing Microsoft Windows applications that you retrieve from the Internet via a World Wide Web browser.

Click on any of the topics below to get more information.

WebApp Auto-Install documentation

[WebApp™ Overview](#)

[Initial Setup](#)

[Using WebApp Auto-Install to install applications](#)

[Creating archives to be installed by WebApp Auto-Install](#)

[Troubleshooting](#)

Other useful information

[About WebApp Auto-Install](#) (Technical Information)

[License, Registration, and Distribution Information](#)

[Related Programs](#)

[Glossary](#)

Initial Setup of WebApp™{ewc HLP256, HLP256_TILE, paper.bmp}

Now that you have WebApp™, what are you supposed to do with it?

Your primary task is to configure your web browser so that when it comes across a WAI (WebApp file), the browser will know what to do with it.

Click on either of the topics below to learn more about them.

[Web Browser Configuration](#)

[Using Virus Protection Software](#)

Web Browser Configuration {ewc HLP256, HLP256_TILE, paper.bmp}

When you install WebApp on your system, WebApp is ready to install applications archived with the WebApp Auto-Install protocol (marked with a WAI extension).

Depending on your web browser, however, you may need to set up your browser to recognize applications in the WebApp Auto-Install format (*.WAI) and to find the WebApp Auto-Install executable (WEBAPP.EXE).

Configuring NCSA Mosaic

If you use the NCSA Mosaic browser, then you can easily configure it with the [Mosaic Browser Configuration Dialog](#).

You get to the Mosaic Browser Configuration Dialog through the WebApp [Main Configuration Dialog](#).

Configuring Other Browsers (like Netscape)

If you are not using NCSA Mosaic, the easiest way to tell if your browser already knows about WebApp is to download an application. Sample applications that use the WebApp protocol can be found at the following URL:

<http://ike.engr.washington.edu/iat/doc/webapp.html>

If your browser does not recognize the WebApp Auto-Install archive, it will prompt you with a dialog asking you to specify the full pathname of the WebApp Auto-Install executable. The executable is named WEBAPP.EXE and the default installation directory is C:\WEBAPP.

If your browser doesn't recognize WebApp archive and doesn't prompt you to enter the location of the executable, then you may have to read the browsers documentation to find out how to install a new MIME type and associate it with an executable.

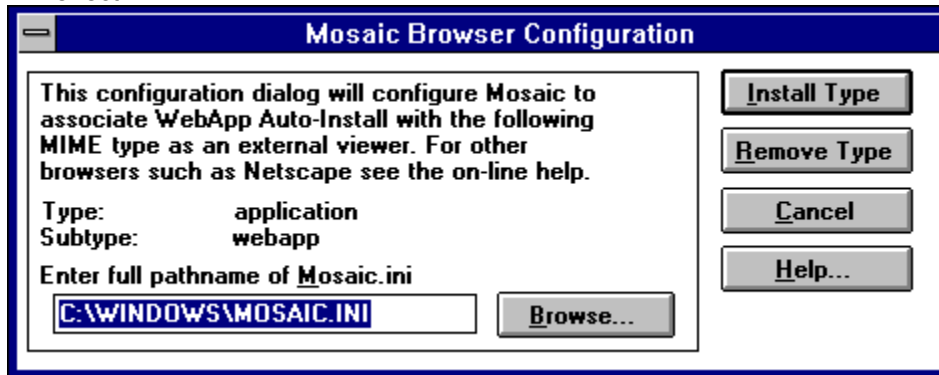
NOTE: The executable is sometimes referred to as an external viewer or helper application.

The MIME type for WebApp is **application/webapp** (technically the type is application and the subtype is webapp).

Mosaic Browser Configuration Dialog {ewc HLP256, HLP256_TILE, paper.bmp}

You get to this Configuration Dialog by clicking on the Web Browser Button in the Main Configuration Dialog of WebApp. Through this dialog, you set up NCSA Mosaic to use WebApp and to recognize the WebApp Protocol (*.WAI).

This dialog adds or removes the MIME type for WebApp Auto-Install to the NCSA Mosaic WWW Browser configuration file. Note: You must restart the Mosaic browser for these changes to take effect.



Note: This dialog can only be used to configure the NCSA Mosaic web browser; you can't use it to configure other browsers. (See [Web Browser Configuration](#).)

Enter full pathname of MOSAIC.INI

You use the Browse button to find the location of your MOSAIC.INI file with a common dialog.

Install Type

You click on this button to add an association to NCSA Mosaic so it recognizes the MIME type (application/WebApp) and links it to the WebApp Auto-Install executable (WEBAPP.EXE).

Remove Type

You click on this button to remove the association you added to NCSA Mosaic between the MIME type and the WebApp Auto-Install executable.

Creating WebApp Auto-Install archives {ewc HLP256, HLP256_TILE, paper.bmp}

Note: You need the following help only if you have an application you wish to archive and distribute using the WebApp Auto-Install protocol.

To create an archive using the [WebApp Auto-Install protocol](#), you follow four basic steps:

1. Edit the [installation configuration file](#) with a text editor.
2. Create the archive with your application's files and the file WEBAPP. (See [MKWAI.BAT](#).)
3. Run WebApp Auto-Install with the archive to test the installation.
4. Place the archive on a server that has been [configured](#) to support WebApp

Because you may have build and test the archive several times due to changes in the installation configuration, we recommend creating a program item for each step.

Creating WebApp archives- Configure Server {ewc HLP256, HLP256_TILE, paper.bmp}

In order to distribute an archive for WebApp Auto-Install, you need to configure the Web Server to identify the archive with the correct MIME type. The MIME type for WebApp Auto-Install is as follows:

Type: application

Subtype: webapp

Extension: wai

To configure the server, you may need to add a line to the special server configuration file named MIME.TYPES, and then reboot the server.

Add the following line to MIME.TYPES to have the server associate the file extension .WAI with the MIME type "application/webapp":

application/webapp wai

You will probably need to contact the site administrator in order to make this change since access to the server configuration is usually restricted.

Authoring Tools - MKWAI.BAT {ewc HLP256, HLP256_TILE, paper.bmp}

WebApp Auto-Install includes a short batch file--MKWAI.BAT--that assists you in [creating an archive](#) with the [WebApp Auto-Install protocol](#).

The batch file works in these steps:

- You need to run the batch file from the parent directory of the directory where your application is located.
- The batchfile takes a single parameter--the name of the application directory (do not include the path).
- The batch file then runs the archiver program--LHA--with the appropriate parameters to create a self-extracting archive.
- Finally, the batchfile changes the archive extension from .EXE to .WAI.

You need to make sure LHA.EXE is in a directory in the path. However, you can edit the MKWAI.BAT with a text editor to run LHA from a specified directory or to run a different archiver program. In the batch file %1 represents the name of the application directory which is given when you run MKWAI.BAT.

WebApp Protocol {ewc HLP256, HLP256_TILE, paper.bmp}

The WebApp Auto-Install protocol requires an archive to have the following three attributes:

1. The archive includes [the installation configuration file, WEBAPP](#) along with the other files in the archive.
2. The archive is a self-extracting archive (to remove from the user the burden of finding, installing and licensing the de-archive program).
3. The archive has the extension .WAI.

See Also: [Creating WebApp Auto-Install archives](#)

Creating WebApp archives - Configure Installation {ewc HLP256, HLP256_TILE, paper.bmp}

WebApp allows you to do many of the standard procedures necessary to install an application. You control which of these features WebApp uses by setting entries in the [installation configuration file, WEBAPP](#), which you include with the other files in the self-extracting archive that you will distribute.

The following list summarizes the installation feature and its associated entries in the WEBAPP file:

- Adding program items -- [\[ProgramItemN\]](#) -- sections
- Associating file extensions -- [\[Registration\]](#) -- section
- Set directory pathnames in INI files -- [INIFilesToFixup](#) -- entry
- View a readme file -- [ReadmeFile](#) -- entry
- Run the program -- [CommandLine](#) --entry

WebApp Protocol - The installation configuration file, WEBAPP {ewc HLP256, HLP256_TILE, paper.bmp}

The installation configuration file is included in an application archive to control the installation procedure and provide WebApp Auto-Install with information about the program.

Click an entry or section in the following list for information on its use:

[WebAppAutoInstall]

- [CommandLine](#)
- [ReadmeFile](#)
- [CustomSetup](#)
- [BlockAutomaticAddItem](#)
- [InstallGroup](#)
- [INIFilesToFixup](#)

[\[ProgramItemN\]](#)

[\[Registration\]](#)

[WebAppAutoInstall] - CommandLine

Command line to run the program after installation. Also used for default program item if no program item sections are specified.

[WebAppAutoInstall] - ReadmeFile

Name of Readme file if any.

[WebAppAutoInstall] - CustomSetup

Command line of custom setup program. If specified, this program is run just before program items are added.

[WebAppAutoInstall] - BlockAutomaticAddItem

Set to N allows WebApp Auto-Install to add program items. You will want to set this to Y if you have a custom setup program that adds items.

[WebAppAutoInstall] - InstallGroup

This is a suggested program group name. It will be used as the default group for the program items but WebApp Auto-Install allows the user to choose the group. Small applications with few program items should generally leave this entry empty.

[WebAppAutoInstall] - INIFilesToFixup

This feature allows you to supply a list of INI files for your application which need the pathname of the install directory in certain places. Use the keyword WEBAPP_INSTALLDIR in the INI files. It will be replaced by the full path of the install directory.

The list may contain up to 10 files separated by semi-colons.

WEBAPP file section - [ProgramItemN]

Note: [ProgramItemN] represents one of up to 20 sections titled [ProgramItem1], [ProgramItem2], etc.

Description Descriptive title for icon.

CommandLine Command Line of item.

Directory Working directory (specify only when it is a sub-directory of the installation directory).

IconFile Optional name of icon (.ICO) file or executable to get icon from. If not specified the executable for the command line will be used.

IconIndex Icon index in the executable (not used if an icon file is specified).

WEBAPP file section - [Registration]

This section supplies information to be registered in the Registration database. See help for REGEDIT.EXE for more information on the Registration database. WebApp Auto-Install always makes the association. If the file type or extensions have previously existing associations, they will be overwritten.

FileType Descriptive name for files with the listed extensions (e.g. Picture Files)
CommandLine Command Line of program to associate with a file of this type (be sure to include path relative to install directory if program is in a sub-directory)
Extensions Comma-separated list of extensions (e.g. bmp, pcx, gif)

Using WebApp Auto-Install to install applications {ewc HLP256, HLP256_TILE, paper.bmp}

The real beauty of WebApp is in the time and hassle it saves you. With WebApp you can pull an application off a World Wide Web page and let WebApp install it onto your system without you having to mess with creating program groups, icons, opening DOS windows, etc., etc.

WebApp Auto-Install has configuration options that let you decide which directory you want an application installed and how to proceed after installation. The following outline charts the procedure of installing the application.

1. Get the install directory. (2 methods)

[Use auto-install directory](#)

[User selects install directory](#)

2. *Scan archive for viruses (if enabled)
3. Run the self-extracting archive
4. *Scan extracted files for viruses (if enabled)
5. Run an application-supplied custom setup program if there is one
6. Post-installation setup and execution (2 options)

[Choose program group](#)

[Run program immediately](#) (items added to default program group)

* virus protection software not included - see [Using Virus Protection Software](#)

See Also: [Configuration Dialog](#)

Get Install Directory Method - Use auto-install directory {ewc HLP256, HLP256_TILE, paper.bmp}

You select this option by turning **on** the "**Always install in Auto-Install directory**" check box in the [Configuration Dialog](#).

WebApp Auto-Install automatically creates a directory under the auto-install directory. If the application has already been installed before, you may get an [Overwrite Prompt Dialog](#).

See Also: [Using WebApp Auto-Install](#)

Get Install Directory Method - User selects install directory {ewc HLP256, HLP256_TILE, paper.bmp}

You select this option by turning **off** the "Always install in Auto-Install directory" check box in the [Configuration Dialog](#).

When you use this method, you'll have to enter the install directory in the [Select Install Directory Dialog](#) each time WebApp Auto-Install installs an application.

See Also: [Using WebApp Auto-Install](#)

Post-Installation Option - Choose program group {ewc HLP256, HLP256_TILE, paper.bmp}

You select this option by turning **off** the "Run program immediately after installation" check box in the [Configuration Dialog](#).

When this option is **on**, WebApp Auto-Install gives you the [Installation Confirmation Dialog](#) after the application has been successfully installed. This dialog lets you set the program group where the items supplied by the application will be added.

If you have not set "**Always add item to default program group**" in the Configuration Dialog, then the group name defaults to the group name supplied by the application if there is one; otherwise, the default group name you supplied in the Configuration Dialog is used. You can select an existing group from the drop-down list or enter a new group to be created.

See Also: [Using WebApp Auto-Install](#)

Post-Installation Option - Run program immediately {ewc HLP256, HLP256_TILE, paper.bmp}

You select this option by turning **on** the "Run program immediately after installation" check box in the [Configuration Dialog](#).

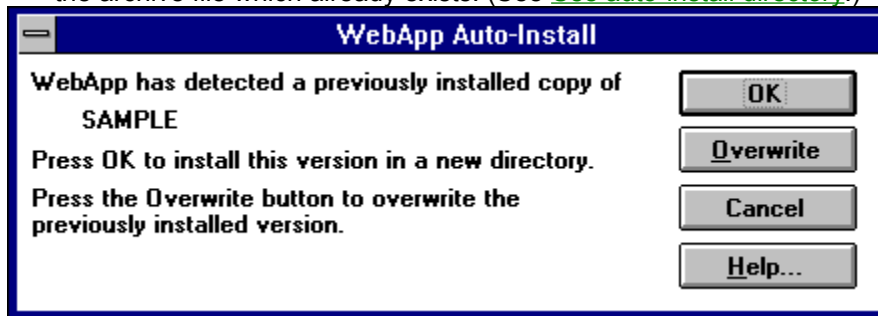
When this option is **on**, WebApp Auto-Install automatically adds any program items supplied by the application to a default program group.

If you have set "**Always add item to default program group**" in the Configuration Dialog, then WebApp Auto-Install always uses your default program group. Otherwise, the application may supply a program group name which will be used instead.

See Also: [Using WebApp Auto-Install](#)

Overwrite Prompt Dialog {ewc HLP256, HLP256_TILE, paper.bmp}

This dialog appears when WebApp tries to automatically create an install directory named after the archive file which already exists. (See [Use auto-install directory.](#))



Note: The OK button directs WebApp to create a new directory name by appending a number to the archive name. Cancel aborts the installation.

See Also: [Using WebApp Auto-Install](#)

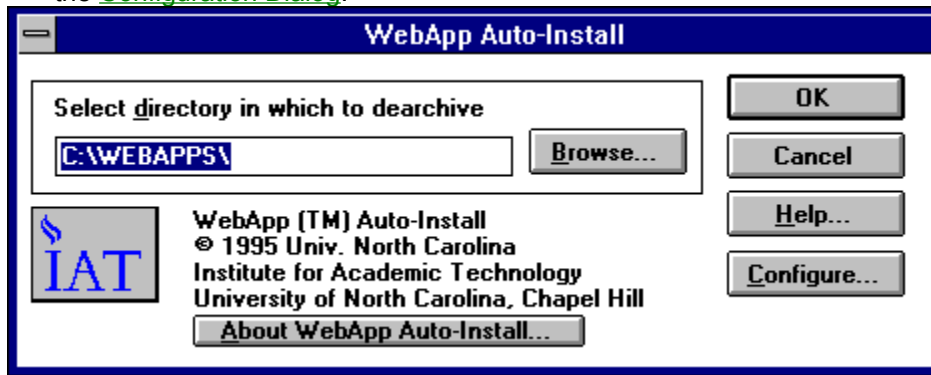
Overwrite

Click this button to install the application in the directory named after the archive file.

Select Install Directory Dialog {ewc HLP256, HLP256_TILE, paper.bmp}

You use this dialog to select the install directory.

This dialog appears when you have turned **off** the "Always install in Auto-Install directory" in the [Configuration Dialog](#).



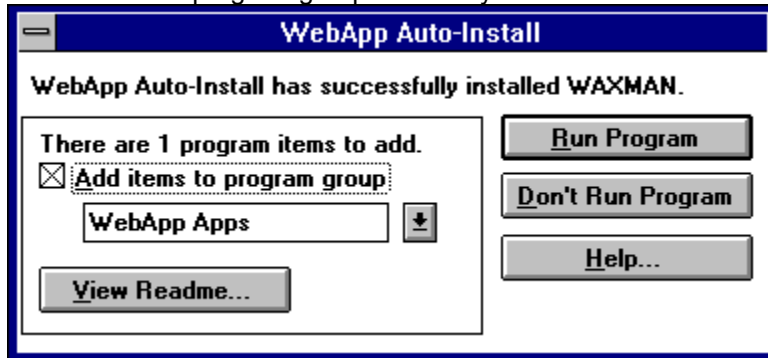
See Also: Using WebApp Auto-Install

Select directory in which to de-archive

Enter the pathname for the install directory. This field is initialized with the parent directory of the last install directory.

Installation Confirmation Dialog {ewc HLP256, HLP256_TILE, paper.bmp}

This dialog informs you that the application has been successfully installed. It allows you to choose the program group to which you would like the items if any to be added.



See Also: [Using WebApp Auto-Install](#)

Add items to program group

When this option is checked, program items will be added to the specified group after you close this dialog.

Enter a group name in the edit field or choose an existing group from the drop-down list.

View Readme

If the application has a Readme file, you can open it easily with this button before you run the program. This button does not close the dialog.

Run Program

Click this button to closes the dialog and run the application. The application will run after adding any program items.

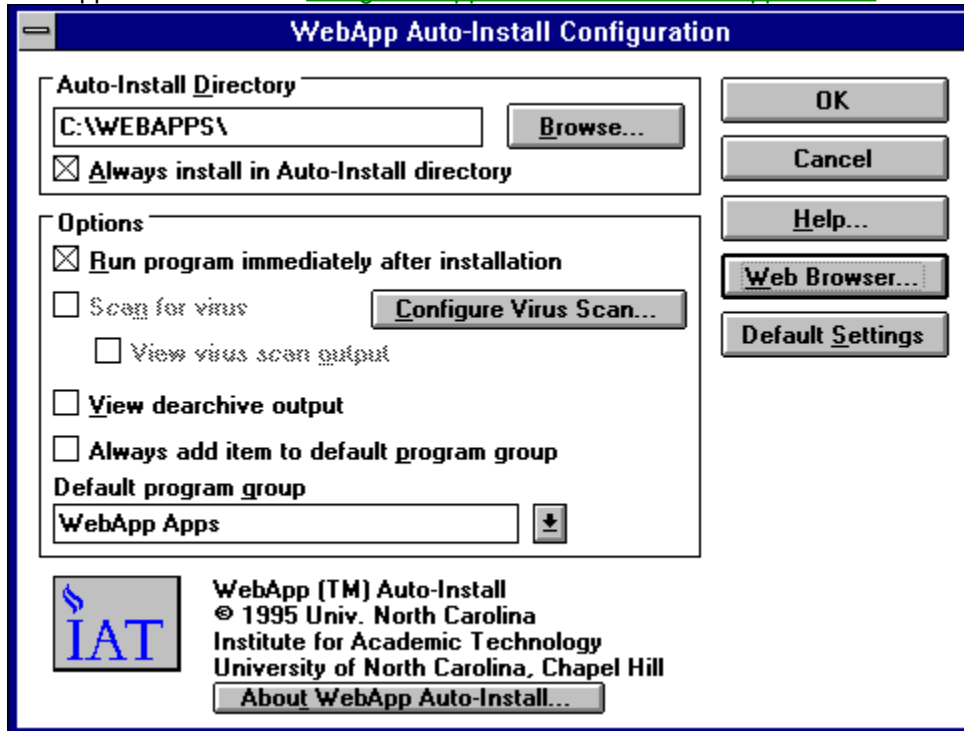
Don't Run Program

Click this button to close the dialog without running the application.

NOTE: Program items will be added if specified.

Configuration Dialog {ewc HLP256, HLP256_TILE, paper.bmp}

The configuration dialog contains options that allow you to control certain aspects of the installation procedure. Click on an item to find out more about what it does. If you are not familiar with the use of WebApp Auto-Install see [Using WebApp Auto-Install to install applications](#).



The image shows a Windows-style configuration dialog box titled "WebApp Auto-Install Configuration". It has a blue title bar and a white main area. The dialog is organized into several sections:

- Auto-Install Directory:** A text box containing "C:\WEBAPPS\" with a "Browse..." button to its right.
- Options:** A group box containing several checkboxes and buttons:
 - ☒ **Always install in Auto-Install directory**
 - ☒ **Run program immediately after installation**
 - ☐ **Scan for virus** (with a "Configure Virus Scan..." button to its right)
 - ☐ **View virus scan output**
 - ☐ **View dearchive output**
 - ☐ **Always add item to default program group**
 - Default program group:** A text box containing "WebApp Apps" with a small downward arrow button to its right.
- Buttons:** On the right side of the dialog, there are five buttons stacked vertically: "OK", "Cancel", "Help...", "Web Browser...", and "Default Settings".
- Footer:** At the bottom left is a logo for "IAT" (Institute for Academic Technology) featuring a stylized flame. To the right of the logo is the text: "WebApp (TM) Auto-Install", "© 1995 Univ. North Carolina", "Institute for Academic Technology", "University of North Carolina, Chapel Hill", and a button labeled "About WebApp Auto-Install..."

See Also: [Using WebApp Auto-Install](#)

Default Settings

Press this button to restore all controls except the Auto-Install Directory to their default installation settings.

Auto-Install Directory

Enter the directory where you would like WebApp Auto-Install to automatically install applications.

Always Use Auto-Install Directory

Turn on this option to avoid being prompted for the install directory.

See Also: [Using WebApp Auto-Install](#)

Run program immediately after installation

Turn on this option to run the program immediately after installation and to avoid seeing the [Installation Confirmation Dialog](#).

See Also: [Using WebApp Auto-Install](#)

Scan for virus

WebApp Auto-Install lets you protect your computer from viruses in downloaded software by automatically scanning the files for viruses.

To enable the "**Scan for virus**" check box, WebApp Auto-Install must be properly [configured](#) with the information necessary to run the virus scanning program.

See Also: [Using Virus Protection Software](#)

View virus scan output

Use this option to check the output of the virus protection software. This option causes WebApp Auto-Install to pause in the DOS shell that executes the virus-scanning program. You will be prompted to press a key to continue. If your virus protection software is a Windows program, then this option only causes it to run in an open window rather than minimized.

View de-archive output

Use this option to check the output of the self-extracting archive. This is especially useful if an error occurs while de-archiving so you can see any messages that may be output. This option causes WebApp Auto-Install to pause in the DOS shell that executes the self-extracting archive after the files have been extracted. You will be prompted to press a key to continue.

See Also: [Troubleshooting](#)

Always add item to default program group

Turn on this option to prevent an application from creating a new group for its icons.

Default program group

Enter the name of the program group where you would like program items to be installed. If the application supplies a program group name, then it will be used unless you turn on the "**Always add item to default program group**" check box.

Using Virus Protection Software {ewc HLP256, HLP256_TILE, paper.bmp}

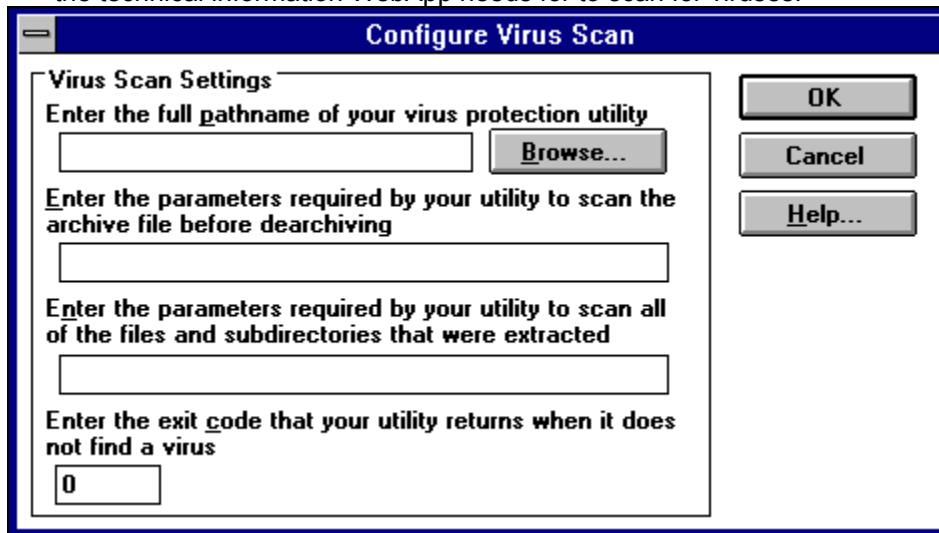
If you have a virus protection program installed on your computer or a local network drive, you can configure WebApp Auto-Install to automatically scan the files for viruses before you install or run the application.

To use this feature you must supply some technical information in the [Configure Virus Scan Dialog](#) so that WebApp Auto-Install can scan the files and determine that no viruses were found.

Once you have set it up, you can turn the option **on** or **off** at any time with "**Scan for virus**" check box in the [Configuration Dialog](#).

Configure Virus Scan Dialog {ewc HLP256, HLP256_TILE, paper.bmp}

You access the Configure Virus Scan Dialog from the [Configuration Dialog](#) and use it to supply the technical information WebApp needs for to scan for viruses.



Configure Virus Scan

Virus Scan Settings

Enter the full pathname of your virus protection utility

Browse...

Enter the parameters required by your utility to scan the archive file before dearchiving

Enter the parameters required by your utility to scan all of the files and subdirectories that were extracted

Enter the exit code that your utility returns when it does not find a virus

OK

Cancel

Help...

See Also: [Using Virus Protection Software](#)

Pathname of utility

Enter the full pathname of the virus scanning utility. We recommend that you use the Browse button to find the executable name to avoid typing errors.

Pre-extraction parameters

Enter any required or optional parameters to scan a single file with your virus scanning utility. The command to scan the self-extracting archive will be composed of the [utility's pathname](#) followed by the pre-extraction parameters followed by the pathname of the archive file.

If your virus scanner needs the name of the archive file in a position other than at the end of the parameter list, use the keyword <name> as a place holder in the parameter list.

If you don't know what parameters to use you will have to either find the documentation for the command line options for your virus protection software or contact the manufacturer of the software.

Post-extraction parameters

Enter any required or optional parameters to scan all the files in a directory with your virus scanning utility. The command to scan the de-archived files will be composed of the [utility's pathname](#) followed by the post-extraction parameters followed by the name of the install directory.

If your virus scanner needs the name of the directory in a position other than at the end of the parameter list, use the keyword <name> as a place holder in the parameter list.

If you leave this field empty WebApp Auto-Install will use the same parameters as specified for the [pre-extraction parameters](#).

Safe exit code

Enter the integer exit code that your virus scanning utility returns when it exits successfully without finding a virus.

Most virus protection programs will return an integer exit code that indicates whether or not the program found a virus and possibly other informative codes. Because WebApp does not know the meaning of the different codes that might be returned, you must tell it which code indicates that no virus was found so that it will know that it is safe to continue.

If you don't know what the safe exit code is you should either find it in the documentation for your virus protection software or contact the manufacturer of the software.

Troubleshooting {ewc HLP256, HLP256_TILE, paper.bmp}

Occasionally you may encounter problems during de-archiving and launching an application that uses the WebApp protocol. This topic does not attempt to list all of the errors that may occur but should give you pointers on how you can diagnose some of the more common problems you may encounter.

Problem: Application does not launch or produces some error message after de-archiving.

This problem can occur because there was an error in de-archiving that resulted in some or all of the files not being extracted. You may have run out of disk space or there might have been an error in the archive.

Try setting the [view de-archive output](#) option in the [configuration dialog](#) when you reload the application in order to view the output from the self-extracting archive.

Related Programs {ewc HLP256, HLP256_TILE, paper.bmp}

The following list of programs supplies information necessary to retrieve the programs on the Internet using either ftp, gopher or WWW protocols. Note these archive files do not use the WebApp Auto-Install protocol. This is not a complete list of locations. Generally these files may be found on many different servers. The specific locations given for these files are accurate as of January 1995, but may change as system administrators rearrange and update their archives.

WebApp Auto-Install executable - **wbap10.exe** (self-extracting archive)

FTP: [ecsel.engr.washington.edu](ftp://ecsel.engr.washington.edu) (Directory: /pub/webapp)

WWW: <http://ike.engr.washington.edu/iat/software/webapp>

Archivers:

LHA (with English language manual) - **lha213.exe** 44,416 (self-extracting archive)

FTP: [oak.oakland.edu](ftp://oak.oakland.edu) (Directory: /simtel/msdos/archiver)

WWW: <ftp://oak.oakland.edu/simtel/msdos/archiver>

PKZip - **pkz204g.exe** 202,574 (self-extracting archive)

Gopher: [wilcox.umd.edu](gopher://wilcox.umd.edu) (Port: 70 -- Directory: /misc/software/local/msdos/pkware)

WWW: <gopher://wilcox.umd.edu:70/11/Misc/software/local/msdos/pkware>

Virus protection:

F-Prot - **fp-215.exe** 529,677 (self-extracting archive)

Gopher: [wilcox.umd.edu](gopher://wilcox.umd.edu) (Port: 70 -- Directory: /Misc/software/local/msdos/fprot)

WWW: <gopher://wilcox.umd.edu:70/11/Misc/software/local/msdos/fprot>

WWW: <gopher://nss1.CC.Lehigh.EDU:70/1/ANTIVIR>

Glossary {ewc HLP256, HLP256_TILE, paper.bmp}

- archive** - a file containing a collection of files and/or subdirectories that may or may not be compressed depending on what program created it
- archiver program** - any program that creates archive files and extracts files from archive files; some examples with their associated extensions are PKZip (.zip), LHA (.lzh), tar (.tar)
- command line** - the text you type in at the DOS or UNIX shell prompt or in the Windows Program Manager File Run dialog box
- executable** - a program that can be run on a computer
- execute** - to run a program on a computer
- extension** - this is the part of the filename that appears at the end after a period - it is generally used to indicate the type of a file; in DOS filenames there can be at most 1 extension and it has at most 3 characters
- external viewer** - a separate application that a Web browser launches to display a specific type of file which the browser cannot display itself
- ftp (File Transfer Protocol)** - protocol for transferring files between systems connected via the Internet; ftp is also used to name the application that implements the protocol
- gopher** - protocol and application for finding and retrieving materials on the Internet
- hyper-text** - a generic term for any document that contains "hotwords", or links, to other documents
- multimedia application** - any document or application which contains different types of data
- NCSA Mosaic** - the first widely distributed WWW server and browser
- self-extracting archive** - an archive file that is also an executable which when run extracts the files in the archive
- WWW (World Wide Web)** - a loose term for all the interconnected hyper-text material available on Web servers throughout the world's networks
- WWW browser (or just Web browser)** - the client program that connects to a Web server, displays the retrieved file and provides interface and functionality to follow links to other files
- WWW server (or just Web server)** - server program that allows clients to connect to it and retrieve a hyper-text document

About WebApp Auto-Install {ewc HLP256, HLP256_TILE, paper.bmp}

WebApp Auto-Install, © 1995 University of North Carolina

WebApp Auto-Install was developed at the Institute for Academic Technology by Steve Griffin and Jeff Schang. For more information on this program or the IAT itself, please contact us by telephone, Email, or surface mail. You can also browse our WWW page.

Locations of the Shareware Version of WebApp

WWW: <http://ike.engr.washington.edu/iat/software/webapp/>

anonymous FTP: [ecsel.engr.washington.edu](http://ecsel.engr.washington.edu/pub/webapp) pub/webapp directory

List of Software Publishers using WebApp format

<http://ike.engr.washington.edu/iat/software/webapp/archives.html>

Technical Support

Email: webapp@unc.edu
phone: 919 405-1927
fax: 919 405-3377

ListServ

webapp@gibbs.oit.unc.edu

WebApp Distributor

Contact the distributor for obtaining registered copies of WebApp. Cost is \$25/copy plus shipping and handling. Prices are subject to change.

Research Triangle Media Conversions
919 286-2425
800 282-2425
286-6626 fax

907 Broad St.
Durham, NC 27705-4141

Visa, Mastercard, Discover, American Express, PO, Check accepted.

Site Licenses and Other Licenses

Institute for Academic Technology
2525 Meridian Parkway, Suite 400
Durham, NC 27713
919 405-1927

License, Registration, and Distribution Information{ewc HLP256, HLP256_TILE, paper.bmp}

WebApp, copyright 1995 by University of North Carolina at Chapel Hill (UNC), is a SHAREWARE product. This help topic contains binding information about licensing, registration and distribution of WebApp. If you do not agree with the conditions and rules stated in this text, please remove this copy of WebApp from your computer.

Specific Information

[Licensing](#)

[Non-exclusive Distribution License Agreement](#)

[Registration](#)

[Distribution](#)

[Contacting Distributor and UNC](#)

[Complete Text of Licensing, Registration, and Distribution Agreement](#)

In this help topic:

- The term "WebApp" identifies release version of WebApp Application Auto-Installer.
- The term "SHAREWARE version" refers to the complete package containing the version of WebApp that runs under Microsoft Windows 3.1. By complete package we mean: WebApp's executable file, associated help file, readme file and registration form files. For a complete list of these files, and their filenames, refer to the Package Contents help topic. The term "SHAREWARE copy" means an instance of the SHAREWARE version on your computer.
- The term "REGISTERED version" refers to all other versions of WebApp. The term "REGISTERED copy" means an instance of the REGISTERED version on your computer.

No component part of WebApp may be distributed separately from the software, nor may the software be disassembled, copied, reverse engineered, or altered in any form. This includes all elements in the WebApp package, the look and feel, menus and dialogs, in both REGISTERED and SHAREWARE versions of the software.

WebApp Distribution{ewc HLP256, HLP256_TILE, paper.bmp}

6. Distribution

a. SHAREWARE copies may be freely distributed by individual users for trial and leisure utilization.

b. SHAREWARE copies may be uploaded to Bulletin Board Systems, FTP sites, Usenet newsgroups and any network sites providing its users with access to download it for trial and leisure purposes. Bulletin Board Systems should restrict downloading charges for the SHAREWARE version to flat rate connection fees.

c. SHAREWARE copies may NOT be distributed in CD-ROM disks, diskettes or any other media, without express written authorization of UNC. Authorization for distribution may be obtained in the form of a written "[Non-exclusive Distribution License Agreement](#)", signed by the parties.

d. SHAREWARE copies may NOT be distributed with any software package, or be systematically recommended to users of any software system or service, without express authorization of UNC. Authorization for distribution may be obtained in the form of a written "[Non-exclusive Distribution License Agreement](#)", signed by the parties.

e. REGISTERED versions may only be distributed by UNC, or by distributors who have obtained a written "[Non-exclusive Distribution License Agreement](#)", signed by the parties.

WebApp Registration{ewc HLP256, HLP256_TILE, paper.bmp}

7. Registration

a. Individual or home users may utilize SHAREWARE copies for a 30 day trial period. After the trial period, registration is required. To obtain a REGISTERED copy, individual or home users must contact the Distributor of WebApp listed above.

b. SHAREWARE copies may NOT be utilized at office computers or employee home computers for work related tasks. In both cases registration is required. REGISTERED copies must be obtained either through contacting the Distributor of WebApp listed above or, for a site license, contact UNC at the address above.

WebApp non-exclusive Distribution License Agreement{ewc HLP256, HLP256_TILE, paper.bmp}

A Non-exclusive Distribution License Agreement must be signed by both parties BEFORE:

1. Including WebApp in a software product package,
2. Distributing WebApp to clients and/or users of a software package or service,
3. Including WebApp in CD-ROMs, diskettes, or any other media.
4. Distributing WebApp in any form other than the ones mentioned in the Distribution section of the UNC SOFTWARE LICENSE below.

There is no standard Non-exclusive Distribution License Agreement form. Specific agreements will be developed between UNC and interested parties. Agreements may, at discretion of UNC, include customization of program interface and/or execution, partial or total disclosure of source code, maintenance and/or upgrade clauses. For more information, contact UNC at the address below.

Contacting the Distributor of WebApp

Research Triangle Media
907 Broad Street
Durham, NC 27705-4141
919 286-2425 or 800 282-2425
919 286-6626 fax

(Single copies of WebApp cost \$25 plus shipping and handling. Volume discounts are available. Prices are subject to change without notice.) Contact the Distributor of WebApp listed above for more information.

Contacting UNC

Institute for Academic Technology
2525 Meridian Pkwy, Suite 400
Durham, NC 27713
Attn: WebApp
919 405-1927
919 560-3377 fax
webapp@unc.edu

Limited Use Software License Agreement{ewc HLP256, HLP256_TILE, paper.bmp}

This Limited Use Software License Agreement (the "Agreement") is a legal agreement between you, the end-user, and The University of North Carolina at Chapel Hill (UNC). By continuing the installation of this program, by loading or running the program, or by placing or copying the program onto your computer hard drive, you are agreeing to be bound by the terms of this Agreement.

UNC SOFTWARE LICENSE

1. Grant of License. UNC grants to you the right to use the WebApp (the "Software"). For purposes of this section, "use" means loading the Software into RAM, as well as installation on a hard disk or other storage device. You agree that the Software will not be shipped, transferred or exported into any country in violation of the U.S. Export Administration Act and that you will not utilize, in any other manner, the Software in violation of any applicable law.

2. Copyright. The Software is owned by UNC and is protected by United States copyright laws and international treaty provisions. You must treat the Software like any other copyrighted material, except that you may make copies of the Software to give to other persons subject to the restrictions contained in this agreement. You may not charge or receive any consideration from any other person for the receipt or use of the Software without receiving UNC's prior written consent. You agree to provide a copy of the software license with any copy of the software you give to another person.

3. NO OTHER WARRANTIES. UNC DISCLAIMS ALL WARRANTIES, EITHER EXPRESS OR IMPLIED, INCLUDING BUT NOT LIMITED TO, IMPLIED WARRANTIES OF MERCHANTABILITY OR FITNESS FOR A PARTICULAR PURPOSE WITH RESPECT TO THE SOFTWARE AND THE ACCOMPANYING WRITTEN MATERIALS. YOU MAY HAVE OTHER RIGHTS WHICH VARY FROM JURISDICTION TO JURISDICTION. UNC DOES NOT WARRANT THAT THE OPERATION OF THE SOFTWARE WILL BE UNINTERRUPTED, ERROR FREE OR MEET YOUR SPECIFIC REQUIREMENTS. THE AGENTS, EMPLOYEES, DISTRIBUTORS, AND DEALERS OF UNC ARE NOT AUTHORIZED TO MAKE MODIFICATIONS TO THIS WARRANTY, OR ADDITIONAL WARRANTIES ON BEHALF OF UNC. ADDITIONAL STATEMENTS SUCH AS DEALER ADVERTISING OR PRESENTATIONS, WHETHER ORAL OR WRITTEN, DO NOT CONSTITUTE WARRANTIES BY UNC AND SHOULD NOT BE RELIED UPON.

4. Exclusive Remedies. If you are the user of a REGISTERED copy of the Software, you agree that your exclusive remedy against UNC, its affiliates, contractors, suppliers, and agents for loss or damage caused by any defect or failure in the Software regardless of the form of action, whether in contract, tort, including negligence, strict liability or otherwise, shall be the replacement of the Software. If you are the user of a SHAREWARE copy of the Software, you agree that there will be no replacement of the Software. This Agreement shall be construed in accordance with and governed by the laws of the State of North Carolina. Copyright and other proprietary matters will be governed by United States laws and international treaties. In any case, UNC shall not be liable for loss of data, loss of profits, lost savings, special, incidental, consequential, indirect or other similar damages arising from breach of warranty, breach of contract, negligence, or other legal theory even if UNC or its agent has been advised of the possibility of such damages, or for any claim by any other party. Some jurisdictions do not allow the exclusion or limitation of incidental or consequential damages, so the above limitation or exclusion may not apply to you.

5. General Provisions. Neither this Agreement nor any part or portion hereof shall be assigned or sublicensed, except as described herein. Should any provision of this Agreement be held to be void, invalid, unenforceable or illegal by a court, the validity and enforceability of the other provisions shall not be affected thereby. If any provision is determined to be unenforceable, you agree to a modification of such provision to provide for enforcement of the

provision's intent, to the extent permitted by applicable law. Failure of a party to enforce any provision of the Agreement shall not constitute or be construed as a waiver of such provision or of the right to enforce such provision. If you fail to comply with any terms of this Agreement, your license is automatically terminated.

8. You acknowledge that you have read this agreement, you understand this agreement, and understand that by continuing the installation of the software, by loading or running the software, or by placing or copying the software onto your computer hard drive, you agree to be bound by this agreement's terms and conditions. You further agree that, except for any subsequent written agreement between UNC and you, this agreement is a complete and exclusive statement of the rights and liabilities of the parties. This agreement supersedes all prior oral agreements, proposals or understandings, and any other communications between UNC and you relating to the subject matter of this agreement.

Standard Buttons

The OK, Cancel, and Help buttons work in WebApp like they do in other Windows applications.

WebApp™ Overview {ewc HLP256, HLP256_TILE, paper.bmp}

WebApp™ dramatically simplifies installation and execution of software distributed by World Wide Web servers on the Internet.

Retrieving an application referenced in a WWW page is normally only the first step in a lengthy process that includes de-archiving files, creating directories, running a setup program, modifying initialization files. With WebApp installed on a machine, only a single click of a mouse on a WWW page is required to install and run the application.

WebApp works in conjunction with WWW browsers and includes configuration options to support Virus Scanning software so that the chances of executing a virus-infected program are reduced.

WebApp saves sophisticated Internet users time and enables more trouble-free distribution of software to less technically sophisticated users. "The beauty of WebApp is that it makes sophisticated educational resources available to people who do not have extensive computer knowledge or access to technical support.", says W.O. Crain, Jr. of Seattle Central Community College. Crain recently converted a collection of interactive mathematics workbooks on the Internet called the Mathwright Library into WebApp format.

Creating applications that can be installed by WebApp is simple and requires no programming changes and no royalties. Online help, tools, and samples are provided to support the creation of "WebApp Ready" applications.

WebApp compliments secure Internet transaction and proprietary software authorization technologies by handling the installation and execution of the distributed application.

A MS Windows shareware version of WebApp is available on the Internet for downloading on the WWW at <http://ike.engr.washington.edu/iat/software/webapp/> or via anonymous FTP at [ecsel.engr.washington.edu](ftp://ecsel.engr.washington.edu/pub/webapp) in the pub/webapp directory. A Macintosh version of WebApp will be available early in Summer 1995.

Contacting the Distributor of WebApp and UNC{ewc HLP256, HLP256_TILE, paper.bmp}

Research Triangle Media

907 Broad Street

Durham, NC 27705-4141

919 286-2425 or 800 282-2425

919 286-6626 fax

(Single copies of WebApp cost \$25 plus shipping and handling. Volume discounts are available. Prices are subject to change without notice.) Contact the Distributor of WebApp listed above for more information.

Contacting UNC

Institute for Academic Technology

2525 Meridian Pkwy, Suite 400

Durham, NC 27713

Attn: WebApp

919 405-1927

919 560-3377 fax

webapp@unc.edu

Complete Text of Licensing, Registration, and Distribution Agreement{ewc HLP256, HLP256_TILE, paper.bmp}

WebApp, copyright 1995 by University of North Carolina at Chapel Hill (UNC), is a SHAREWARE product. This help topic contains binding information about licensing, registration and distribution of WebApp. If you do not agree with the conditions and rules stated in this text, please remove this copy of WebApp from your computer.

In this help topic:

The term "WebApp" refers to the release version of WebApp Application Auto-Installer.

The term "SHAREWARE version" refers to the complete package containing the version of WebApp that runs under Microsoft Windows 3.1. By complete package we mean: WebApp's executable file, associated help file, readme file and registration form files. For a complete list of these files, and their filenames, refer to the Package Contents help topic. The term "SHAREWARE copy" means an instance of the SHAREWARE version on your computer.

The term "REGISTERED version" refers to all other versions of WebApp. The term "REGISTERED copy" means an instance of the REGISTERED version on your computer.

No component part of WebApp may be distributed separately from the software, nor may the software be disassembled, copied, reverse engineered, or altered in any form. This includes all elements in the WebApp package, the look and feel, menus and dialogs, in both REGISTERED and SHAREWARE versions of the software.

Limited Use Software License Agreement

This Limited Use Software License Agreement (the "Agreement") is a legal agreement between you, the end-user, and The University of North Carolina at Chapel Hill (UNC). By continuing the installation of this program, by loading or running the program, or by placing or copying the program onto your computer hard drive, you are agreeing to be bound by the terms of this Agreement.

WebApp non-exclusive Distribution License Agreement

A Non-exclusive Distribution License Agreement must be signed by both parties BEFORE:

1. Including WebApp in a software product package,
2. Distributing WebApp to clients and/or users of a software package or service,
3. Including WebApp in CD-ROMs, diskettes, or any other media,
4. Distributing WebApp in any form other than the ones mentioned in the Distribution section of the UNC SOFTWARE LICENSE below.

There is no standard Non-exclusive Distribution License Agreement form. Specific agreements will be developed between UNC and interested parties. Agreements may, at discretion of UNC, include customization of program interface and/or execution, partial or total disclosure of source code, maintenance and/or upgrade clauses. For more information, contact UNC at the address below.

Contacting the Distributor of WebApp

Research Triangle Media
907 Broad Street
Durham, NC 27705-4141
919 286-2425 or 800 282-2425
919 286-6626 fax

(Single copies of WebApp cost \$25 plus shipping and handling. Volume discounts are available. Prices are subject to change without notice.) Contact the Distributor of WebApp listed above for more information.

Contacting UNC

Institute for Academic Technology

2525 Meridian Pkwy, Suite 400

Durham, NC 27713

Attn: WebApp

919 405-1927

919 560-3377 fax

webapp@unc.edu

UNC SOFTWARE LICENSE

1. Grant of License. UNC grants to you the right to use the WebApp (the "Software"). For purposes of this section, "use" means loading the Software into RAM, as well as installation on a hard disk or other storage device. You agree that the Software will not be shipped, transferred or exported into any country in violation of the U.S. Export Administration Act and that you will not utilize, in any other manner, the Software in violation of any applicable law.

2. Copyright. The Software is owned by UNC and is protected by United States copyright laws and international treaty provisions. You must treat the Software like any other copyrighted material, except that you may make copies of the Software to give to other persons subject to the restrictions contained in this agreement. You may not charge or receive any consideration from any other person for the receipt or use of the Software without receiving UNC's prior written consent. You agree to provide a copy of the software license with any copy of the software you give to another person.

3. NO OTHER WARRANTIES. UNC DISCLAIMS ALL WARRANTIES, EITHER EXPRESS OR IMPLIED, INCLUDING BUT NOT LIMITED TO, IMPLIED WARRANTIES OF MERCHANTABILITY OR FITNESS FOR A PARTICULAR PURPOSE WITH RESPECT TO THE SOFTWARE AND THE ACCOMPANYING WRITTEN MATERIALS. YOU MAY HAVE OTHER RIGHTS WHICH VARY FROM JURISDICTION TO JURISDICTION. UNC DOES NOT WARRANT THAT THE OPERATION OF THE SOFTWARE WILL BE UNINTERRUPTED, ERROR FREE OR MEET YOUR SPECIFIC REQUIREMENTS. THE AGENTS, EMPLOYEES, DISTRIBUTORS, AND DEALERS OF UNC ARE NOT AUTHORIZED TO MAKE MODIFICATIONS TO THIS WARRANTY, OR ADDITIONAL WARRANTIES ON BEHALF OF UNC. ADDITIONAL STATEMENTS SUCH AS DEALER ADVERTISING OR PRESENTATIONS, WHETHER ORAL OR WRITTEN, DO NOT CONSTITUTE WARRANTIES BY UNC AND SHOULD NOT BE RELIED UPON.

4. Exclusive Remedies. If you are the user of a REGISTERED copy of the Software, you agree that your exclusive remedy against UNC, its affiliates, contractors, suppliers, and agents for loss or damage caused by any defect or failure in the Software regardless of the form of action, whether in contract, tort, including negligence, strict liability or otherwise, shall be the replacement of the Software. If you are the user of a SHAREWARE copy of the Software, you agree that there will be no replacement of the Software. This Agreement shall be construed in accordance with and governed by the laws of the State of North Carolina. Copyright and other proprietary matters will be governed by United States laws and international treaties. In any case, UNC shall not be liable for loss of data, loss of profits, lost savings, special, incidental, consequential, indirect or other similar damages arising from breach of warranty, breach of contract, negligence, or other legal theory even if UNC or its agent has been advised of the possibility of such damages, or for any claim by any other party. Some jurisdictions do not allow the exclusion or limitation of incidental or consequential damages, so the above limitation or exclusion may not

apply to you.

5. General Provisions. Neither this Agreement nor any part or portion hereof shall be assigned or sublicensed, except as described herein. Should any provision of this Agreement be held to be void, invalid, unenforceable or illegal by a court, the validity and enforceability of the other provisions shall not be affected thereby. If any provision is determined to be unenforceable, you agree to a modification of such provision to provide for enforcement of the provision's intent, to the extent permitted by applicable law. Failure of a party to enforce any provision of the Agreement shall not constitute or be construed as a waiver of such provision or of the right to enforce such provision. If you fail to comply with any terms of this Agreement, your license is automatically terminated.

6. Distribution

a. SHAREWARE copies may be freely distributed by individual users for trial and leisure utilization.

b. SHAREWARE copies may be uploaded to Bulletin Board Systems, FTP sites, Usenet newsgroups and any network sites providing its users with access to download it for trial and leisure purposes. Bulletin Board Systems should restrict downloading charges for the SHAREWARE version to flat rate connection fees.

c. SHAREWARE copies may NOT be distributed in CD-ROM disks, diskettes or any other media, without express written authorization of UNC. Authorization for distribution may be obtained in the form of a written "Non-exclusive Distribution License Agreement", signed by the parties.

d. SHAREWARE copies may NOT be distributed with any software package, or be systematically recommended to users of any software system or service, without express authorization of UNC. Authorization for distribution may be obtained in the form of a written "Non-exclusive Distribution License Agreement", signed by the parties.

e. REGISTERED versions may only be distributed by UNC, or by distributors who have obtained a written "Non-exclusive Distribution License Agreement", signed by the parties.

7. Registration

a. Individual or home users may utilize SHAREWARE copies for a 30 day trial period. After the trial period, registration is required. To obtain a REGISTERED copy, individual or home users must contact the Distributor of WebApp listed above.

b. SHAREWARE copies may NOT be utilized at office computers or employee home computers for work related tasks. In both cases registration is required. REGISTERED copies must be obtained either through contacting the Distributor of WebApp listed above or, for a site license, contact UNC at the address above.

8. You acknowledge that you have read this agreement, you understand this agreement, and understand that by continuing the installation of the software, by loading or running the software, or by placing or copying the software onto your computer hard drive, you agree to be bound by this agreement's terms and conditions. You further agree that, except for any subsequent written agreement between UNC and you, this agreement is a complete and exclusive statement of the rights and liabilities of the parties. This agreement supersedes all prior oral agreements, proposals or understandings, and any other communications between UNC and you relating to the subject matter of this agreement.

